

POLICE EQUIPMENT SECTION CITY OF NEW YORK POLICE DEPARTMENT

PATROL TACTICAL TROUSER SPECIFICATIONS

SPEC # 623 & 625

Revised March 2007

- Fabric:** 65% Polyester 35% Rayon 15-15.5 oz. per linear yard. Rayon style# 415 color# 2900, Jitai Mills USA style# 42652 color# 2150 or Pre approved equal.
- Shade:** NYPD navy shade that is on file with the department.
- Pocketing:** All pocketing and fly lining shall be 70% polyester 30% cotton, with a minimum thread count of 90 x 56. Pocketing must have a durable press finish and the color of the pocketing must be black.
- Design:** Trouser shall be manufactured from an up-to-date full cut men's uniform trouser pattern. The trouser styling shall feature: two (2) quarter top pockets, two (2) non-functional hip pockets with flaps, two (2) front utility pockets, and two side cargo pockets.
- Thread:** 40 W spun polyester
- Fly:** Trouser shall have a YKK or Talon brass metal zipper with memory lock brass slider secured by metal stopper at base. There shall be a French Fly tab closure on the inside of the right fly. The tab shall be double ply made of the basic trouser fabric. The right fly shall be lined with the same material and color as the pocketing. The fly lining shall be sewn to the left fly continuing below the zipper into the crotch area in a neat and durable manner. A button shall be located on the left fly corresponding with the French Fly tab to provide a clean and comfortable closure. Topstitching of fly to be "J" stitch eliminating puckering and providing a clean finish. There shall be a firm straight bar tack at the bottom of the fly going through the zipper tape for maximum strength.
- WAISTBAND:** The waistband shall be constructed using the "closed method" and shall measure a minimum of 1-7/8" wide when finished. The waistband curtain shall finish a minimum 2-1/4" wide and is to be made of the same fabric and color as the pocketing material and must be attached to the top of the trouser with a Rocap machine (zigzag stitch). The use of single needle stitching for this operation shall be cause for rejection. The waistband must contain 3/4-inch Ban-Roll to prevent roll over and have three-row, three strand row Snugtex to keep shirts tucked in. The waistband closure shall be accomplished with a single *Elite* crush proof hook and eye centered on the waistband for wearer comfort. The hook and eye shall be reinforced with 7/8-inch non-woven stay tape that is anchored with topstitching through and through to the top of the waistband. In addition to the stitching of the waistband when it is set onto the trouser, the waistband must also be topstitched below the waistband seam through the waistband curtain for added strength. The back center

seam of the trouser to be finished to allow for alterations (with ample basic fabric and waistband curtain material to allow trouser size to be increased at least one size). The outlet in the seat is to be in proportion to waist outlet so seat may also be let out. Seat seam must be sewn with a tandem needle machine (double-needle stitch) for maximum strength.

Belt Loops: There shall be a minimum of five (5) belt loops on waist sizes 24, 26, 28, and 30 and a minimum of seven on all sizes over 30. Each loop shall measure $\frac{3}{4}$ " wide, of double thickness and stitched on the face with a double needle machine. All loops (except back center) must be sewn into the top and bottom of the waistband. The top of the belt loops (except back center) shall be sewn into the waistband curtain seam (zigzag stitching). The bottom of the center back loop shall be tacked to the trouser and the top of the loop tacked to the outside of the waistband to allow for easier waist alteration.

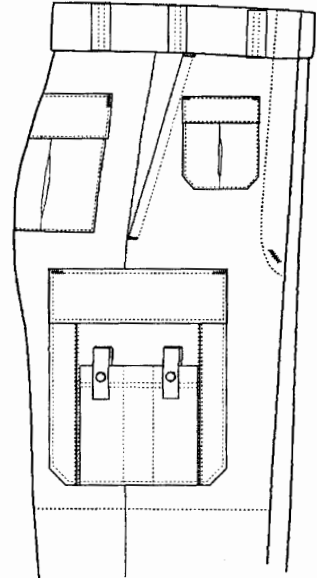
Seat: Seat must be sewn with a Tandem Needle Machine (double-needle stitch) for maximum durability.

Hook & Loop: 5/8 inch black hook and loop.

Stitching: All seams must be sewn with at least 10 stitches per inch.

Quarter top pockets: The two side quarter top pockets will have a minimum opening of 7" and a minimum depth of approximately 6" measured from the bottom of the opening. Side pockets to have straight bar tacks at the top and bottom of pocket openings. Pockets shall be constructed using the stitch, turn, and top stitch method. Front pocket facings and barrier to be made of the basic trouser fabric. Facing shall be a minimum of 1-1/2".

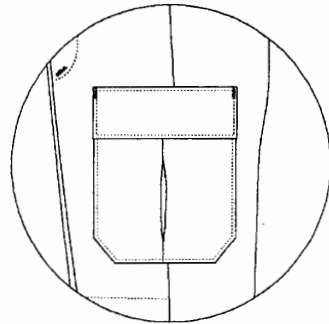
Front cargo/glove pockets: One on each side, shall be 4-1/2" x 4-1/2" with mitered corners and inverted center pleat. Flaps shall measure 1-5/8" x 4-1/2" and secured to the pocket with two 5/8" x 1" hook and loop closures. The hook and loop shall be sew on all four sides $\frac{1}{4}$ " inside of the finished edge of the pocket and flap. Loop on pockets and hook on flaps. All pockets and flaps shall be topstitched $\frac{1}{4}$ inch and reinforced with $\frac{1}{2}$ " straight tacks at upper corners of pockets and flaps. This pocket shall be located approximately 2-1/2" from the bottom of the waistband to the top of the flap and 2-1/4" from the side seam.



Right Side cargo pocket: Shall be centered on the side seam measuring 8" wide x 9" long with mitered corners and two inverted pleats centered 5-1/2" apart on the pocket. Flaps shall measure 2-1/2" long x 8-1/4" wide and secured to the pocket with two 5/8" x 1" hook and loop closures. Loop on pockets and hook on flaps. All pockets and flaps shall be topstitched 1/4 inch and reinforced with 1/2" straight tacks at upper corners of pockets and flaps. This pocket shall be located approximately 4" from the bottom of the side pocket to the top of the flap. There shall be a utility pocket between the two pleats and shall measure 5-1/2" wide and 5-3/4" long. This pocket shall be divided into 3 separate scissor/equipment compartments. The two outer compartments shall have 7" x 3/4" double thickness straps with 1/4" double needle topstitching sewn and bartacked 1/2" above the compartment. The straps must have 2 female snaps placed 1/2" and 2" on center from the finished bottom of the strap. The male part of the snap shall be placed 1" from the top of the compartment. The snaps must be black DOT brand or equal. The utility pocket shall also include a 5-1/2" wide x 3-1/2" deep flap sewn down on 3 sides to hide excess strap material. The bottom of the flap (open end) must meet the top of the utility pocket.

Back hip pockets: Shall be 7" x 7" with mitered corners and inverted center pleat. Flaps shall measure 2" long x 7" wide. These pockets shall be non-functional with the flaps 1/4" topstitched to the pockets (closed). At the top of the flap there shall be a 6" opening into a hidden interior welt type pocket. This pocket shall be 7" deep measured from the top of the flap to accommodate the NYPD memo book. Hip pocket facing and barrier are to be made of basic trouser fabric. Facing shall be a minimum of 3/4" and the barrier shall be a minimum of 1-1/4". All pockets and flaps shall be topstitched 1/4 inch and reinforced with 1/4" straight tacks at upper corners of flaps. This pocket shall be located approximately 2-1/2" from the bottom of the waistband to the top of the flap.

Left Side cargo pocket: Shall be centered on the side seam measuring 8" wide x 9" long with mitered corners and inverted pleat in the center of the pocket. Flaps shall measure 2-1/2" long x 8-1/4" wide and secured to the pocket with two 5/8" x 1" hook and loop closures. Loop on pockets and hook on flaps. All pockets and flaps shall be topstitched 1/4 inch and reinforced with 1/2" straight tacks at upper corners of pockets and flaps. This pocket shall be located approximately 4" from the bottom of the side pocket to the top of the flap.



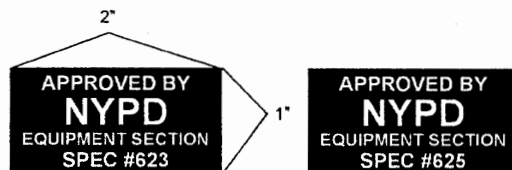
Creasing: The front of the trouser legs shall have a 1/16" topstitch (sewn in crease). Sewing must be 10 stitches per inch and start at the bottom of the front utility pockets and end at the unfinished bottom of the trouser legs.

Knee Reinforcement: The knee area shall have pocketing material sewn from side seam to side seam starting at 1/4" below the finished bottom of the side utility pockets and extend down 12". This reinforcement shall be clean finished at the top and bottom with no raw edges showing.

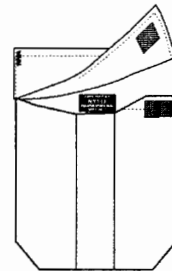
Pressing & Finishing: Trouser must be stitched with matching thread. Trouser must be neatly pressed on Hothead Presses and properly shaped. Outseams (1/4" welt) and inseams are edge serged on automatic equipment for uniformity of quality and shall be pressed open for a smooth pucker-free finish with repeated cleaning and pressing. Trouser must be cleaned and finished to eliminate loose threads.

Labels: Trouser must have a permanent label providing care instructions and label indicating waist size. A removable paper ticket showing the size, fabric content, cut number, and WPL or RN number must be on the outside of the waistband. Ticket to be matchbook style for easy removal without damaging trouser material and showing size when trousers are stacked.

Authorization Tag: Manufacturer will sew an authorization tag on the inside left opening of the left side cargo pocket, directly below the flap stitching. This tag shall incorporate the following information. "APPROVED NY NYPD EQUIPMENT SECTION, SPEC # 623" or "625". Tag shall be navy blue with white lettering and shall measure 2" wide and 1" long.



LABEL PLACEMENT



Warranty: The manufacturer shall guarantee the trousers against workmanship or defects for one year.

Standard sample: Unless specified all samples shall be equal to the sample on file at the Police Equipment Section.

NYPD REGULAR CUT TROUSER GRADE SPECIFICATIONS

[illegible]

NYPD FULL CUT TROUSER GRADE SPECIFICATIONS

[illegible]

POLICE DEPARTMENT
CITY OF NEW YORK

BID PROPOSAL

To be opened at **11:00 A.M., May 19, 2010.** Bids received after time specified will not be considered.

<u>QUANTITY</u>	<u>UNIT</u>	<u>SUPPLY OF SERVICE</u>	<u>UNIT PRICE</u>
10,000/15,000	Ea.	NYPD Patrol Tactical Trousers (male & female)	\$ _____

TOTAL: \$ _____

Supplying the above quantity of **NYPD Patrol Tactical Trousers (male & female)** manufactured in accordance with NYPD spec. #623/625 revised 03/2007 under conditions specified in NYCPD general bid requirements during the period from **June 1, 2010 to May 31, 2012.**

The estimated amount stated on this bid proposal form shall not be construed as the minimum amount, which the Equipment Section shall be obligated to order. A minimum of **10,000** NYPD Patrol Tactical Trousers will be purchased from this contract.

Deliveries to begin on **October 15, 2010** F.O.B. Police Equipment Section, 1 Police Plaza, New York, N.Y. 10038 in such quantities and at such times, as ordered by the Commanding Officer, Equipment Section. **The subsequent deliveries are to be received at the Equipment Section from (6 to 8 weeks) of purchase order.**

Contractor shall also supply "female" trousers Patrol Tactical Trousers at the same unit price as required by the NYPD Equipment Section.

Any additional NYPD Patrol Tactical Trousers (male & female) which may be required by this department during the period of the contract must be furnished by the winning bidders firm at the contract bid price.

All potential bidders who may wish to make a bid must enclose one (1) sample of each of the Patrol Tactical Trousers, (male & female) made according to NYPD specifications attached, along with their bid at the time of the bid opening. Failure to make delivery by date stated will be grounds for removal of contract. Failure to submit the required samples with your bid will result in a rejection of bid. Any sample by a bidder may be subject to such test or tests by any laboratory as Commanding Officer, NYPD Equipment Section may select. The lowest apparent responsive and responsible bidder will be required to pay for any expense requested by the NYPD Equipment Section, which will be at the vendor's expense.

Each bidder must attach a **Certified Check along with their bid in the amount of \$1,000.00, made payable to the Police Commissioner, City of New York** as bid security.

It is to be understood that the initial order will be delivered within six to eight (6 to 8) weeks of receipt of Purchase Order from the Commanding Officer of the E.S. Failure to do so could result in termination of this contract, and preclude consideration in future contracts by this department.

**Attachments: Invitation to Bid – 1 Page
NYPD Spec. #623/625 - rev., 03/07 5 pages, Blue Envelope**

FIRM NAME: _____ AUTHORIZED SIGNATURE: _____

**TAX IDENTIFICATION# _____ ADDRESS: _____

_____**

NYPD PATROL TACTICAL TROUSERS, (MALE & FEMALE).....MAY 19, 2010

This bid is made without any previous understanding, agreement, or connection with any other third person, firm or corporation making a bid for the same purpose, and that the bid is in all respects fair and without collusion of fraud.

To the Deputy Commissioner in Charge of Management & Budget:

The undersigned, hereinafter called bidder hereby agrees to deliver the above at the prices named, and if awarded the contract to make delivery in accordance with our requirements, within six to eight (6 to 8) weeks from receipt of purchase order.

This bid is submitted with the understanding that the Invitation to Bid and the requirements for Police Equipment Section Bids, Contract Awards and Contract Conditions, are part and parcel hereof, and that this bid shall bind the bidder and bidder's personnel and legal representatives, and the bidder hereby agrees to abide by your regulations governing this bid, and if so required, to furnish bond, in the event that the bidder is awarded said contract, for the faithful performance thereof.

FIRM NAME _____

PRINT

E-MAIL ADDRESS _____

AUTHORIZED SIGNATURE _____

FAX # _____

TELEPHONE # _____

TAX IDENTIFICATION # _____

CONTACT PERSON _____

PRINT

CONDITIONS

- Bids must be submitted, sealed, in the envelope furnished for that purpose. In the event of error, the unit price will govern, and tie bids will be decided by the Police Commissioner.
- No bid will be received for a quantity greater or less than that specified. The Bidder agrees to accept order for any or all items at price quoted for each.
- Completion of delivery will be required within the number of days stated, time being expressly understood to be of the essence of the contract. Bidders shall be responsible for allowing sufficient time to make deliveries within the time limit
- The time of delivery shall be stated in weeks. Such indefinite terms as "Immediately", "Without Delay", "At Once", etc., will not be accepted.
- No charge shall be allowed for cartage, freight or delivery.
- The bidder agrees to abide by the regulations, and any failure on his part to fulfill this agreement shall make him ineligible to submit bids again for any material, services, articles or supplies which may thereafter be purchased.
- The right is reserved to reject any of all bids, or parts or items thereof.
- No person shall be interested in more than one (1) bid for the same supply of service.
- Equipment Section facilities are not capable of accommodating pallets any larger than 40 inches in width and 48 inches in length. Pallets exceeding such dimensions cannot be accommodated by the facilities and **will not be accepted and the vendor may be held non-responsive for the contract.**
- The bid when accepted is not assignable or transferable without consent of the Commissioner, nor can performance be sublet.
- All persons bidding are permitted to be present at the opening of bids.
- The successful bidder will be required to complete the NYPD General Bid Requirements before contract award.