



LEARN & CREATE

with Baby Lock



Venture 2 Embroidered Dog Sweatshirt



Use the Baby Lock Venture 2 to take something blank to bountiful! Showcase your favorite artwork by turning it into a design all using the built in IQ Designer program. This project showcases an outline artwork created for Sully the Golden. Scanning or importing artwork, assign your line and fill properties and create your own unique embroidery creations!

Skill Level: Beginner

Created by: Patty Marty, Baby Lock Training, Education and Events Manager

Supplies:

- [Baby Lock Venture 2 10-needle Embroidery Machine](#)
- Included 8" X 14" hoop
- Optional Versatile Magnetic Hoop 5" X 7" (based on design size)
- Scan Frame or image artwork on a USB to import
- Madeira® Rayon or Poly-neon thread for embroidery
- Baby Lock Tear-Away Stabilizer BLT103 or Baby Lock Stick Tear Stabilizer BLT102
- Optional- Baby Lock Fabric Fuse Interfacing or Pellon SF101 Interfacing



LEARN & CREATE

with Baby Lock



- Sweatshirt or blank garment easy to embroider
- Marking Pen

Instructions:

Hoop the sweatshirt with a layer of tear-away firm stabilizer under the center top of the garment. If needed, fuse a piece of fusible interfacing as well to the sweatshirt. Mark the center middle of the sweatshirt to help with placement. Set aside.

For importing the artwork, use the Scan Frame included with the Venture 2. Place the artwork on the frame and secure with the included magnets. Note that the scan area on the Venture 2 is restricted to 8" tall, so when attaching a printed page to the frame, watch the margins.

Remove any frame holder from the machine and attach the scan frame.





LEARN & CREATE

with Baby Lock



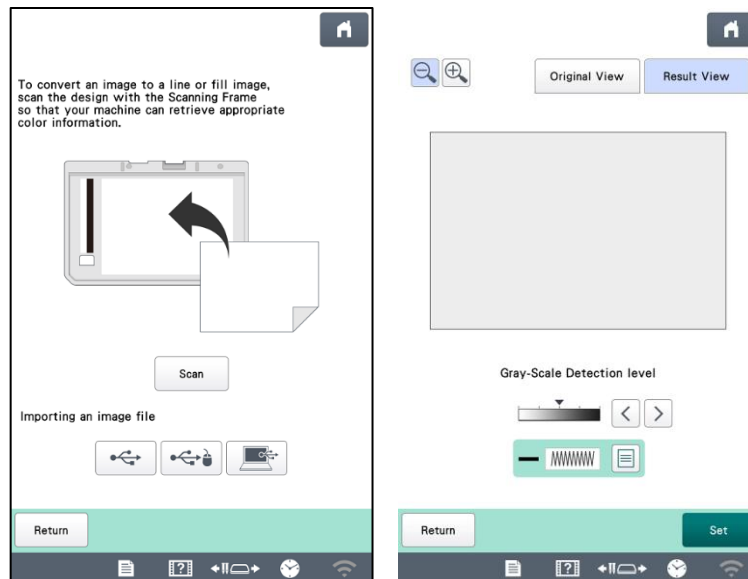
On the machine,



1. Choose IQ Designer.
2. On the screen, select the Line Image option.



3. Scan the artwork.



4. Once the image is on the screen, crop the image.
5. The Black satin stitch will be the default. If you prefer a different line type, select that type.
6. Touch Set.

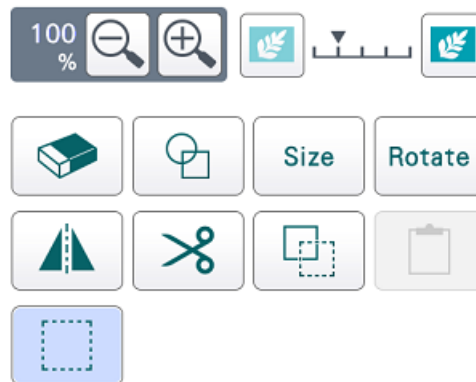


LEARN & CREATE

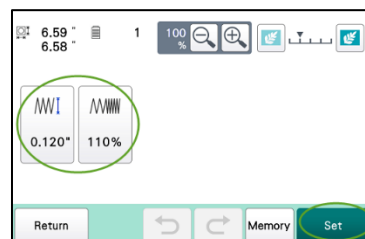
with Baby Lock



7. With the artwork selected, make any adjustments to the size or rotation of the designs.



8. Once editing is done, touch Memory to save the design. Once saved, touch Next.



9. Adjust the satin line settings to increase the size to .120" and 110% Density.
10. Save to Memory with the new settings. This will also save the design as and embroidery design. Touch Set.
11. IQ Designer will be exited and the design brought to Embroidery Edit.
12. Remove the Scan frame. Reattach the Frame Holder A and attach the 8" X 14" Hoop with the sweatshirt.
13. Assign the thread colors and stitch out the design.



LEARN & CREATE

with Baby Lock



14. Make any additional adjustments, like rotating the design.

Edit End

15. Touch Embroidery Edit.

16. Place the designs using any of the camera techniques or the move keys.

17. Touch Embroidery.

18. Assign the color to the appropriate needles. Once ready, stitch out the design.

19. If you need to step away from the machine, utilize the IQ Monitoring App.



20. Once completed, remove the hoop from the machine.



LEARN & CREATE

with Baby Lock



21. As you complete each stitch out, remove any Tear-Away stabilizer.
22. Enjoy your fun new customized sweatshirt!!!

For other exciting projects like this one, visit our website at www.babylock.com.

©2025 Baby Lock USA. This project may be freely used by individuals for non-commercial purposes. Project instructions may not be sold or distributed without approval from Baby Lock. Baby Lock must be acknowledged as the source of the project instructions through copyright or online link.