

Kahere Poultry Farming School

Koliagbe, Guinea

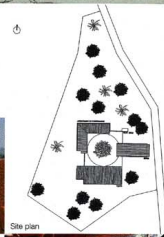
Design	1997 - 1998
Construction	1998 - 1999
Occupancy	2000
Site	3800 m ²
Ground Floor	340 m ²
Total Floor	340 m ²
Costs	104000 USD
- Global	15373000
Rate	USD = 1475
Currency	Guinean Francs

Programme A training centre for poultry farmers, divided into three buildings made of stabilised earth bricks. A classroom for twelve students and a teacher's office, student's dormitory and a teacher's house are grouped around a square courtyard to create an educational community.

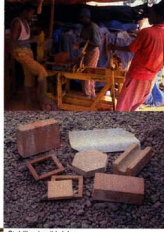
Building Type 719
2001 Award Cycle 2328.GIN



Model



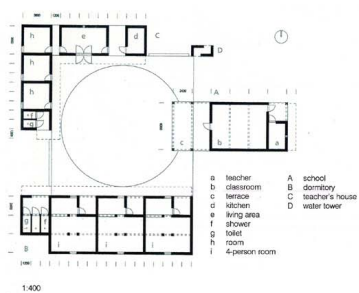
Site plan



Stabilised soil bricks

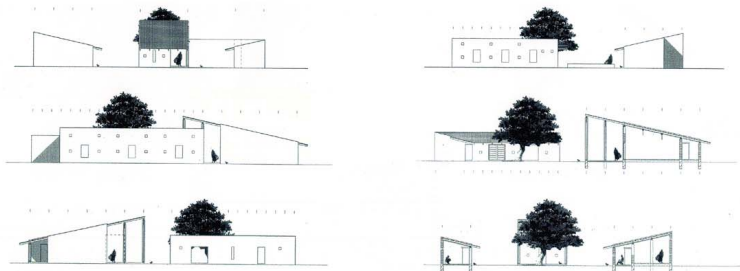


Classroom



- a teacher
- b classroom
- c terrace
- d kitchen
- e living area
- f shower
- g toilet
- h room
- i 4-person room
- A school
- B dormitory
- C teacher's house
- D water tower

1:400



KAHERE POULTRY FARMING SCHOOL GUINEA HEIKKINEN-KOMONEN ARCHITECTS FINLAND