



*Above: The main entrance into the complex; the scale of the village is related to the scale of the children themselves in a contained urban setting.*

*Below: The project objective is to integrate the village with the rest of the community. This is achieved by creating areas of public and social interaction such as a pharmacy and supermarket.*







*Above: The buildings were constructed using natural stone available in the mountains surrounding the city of Aqaba. The stone was not mechanically cut or dressed but left completely rough.*

*Below: Paved communal patios with trees serve as shaded play grounds for children that ensure a measure of calm and safety with privacy.*







*Above: Attached generous outdoor spaces, courts and gardens, both open and enclosed, surround the childrens family houses.*



*Right: Concrete lintels and wooden screens frame a window opening.*

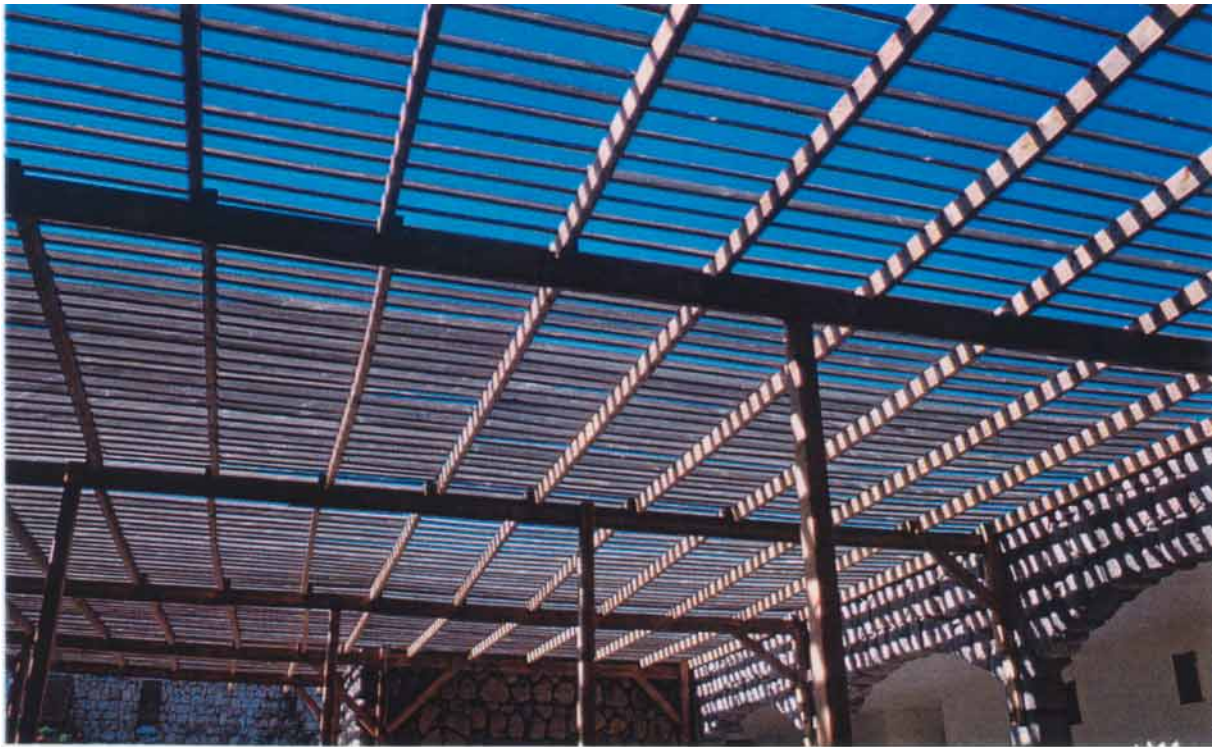


*Above: Children play on the shaded patio in front of a family house.*



*Right: Vaulted archways lead to shaded courts and a village square around which the two storey family houses are planned.*





*Above: Wooden trellises shade the courtyard of the kindergarten.*

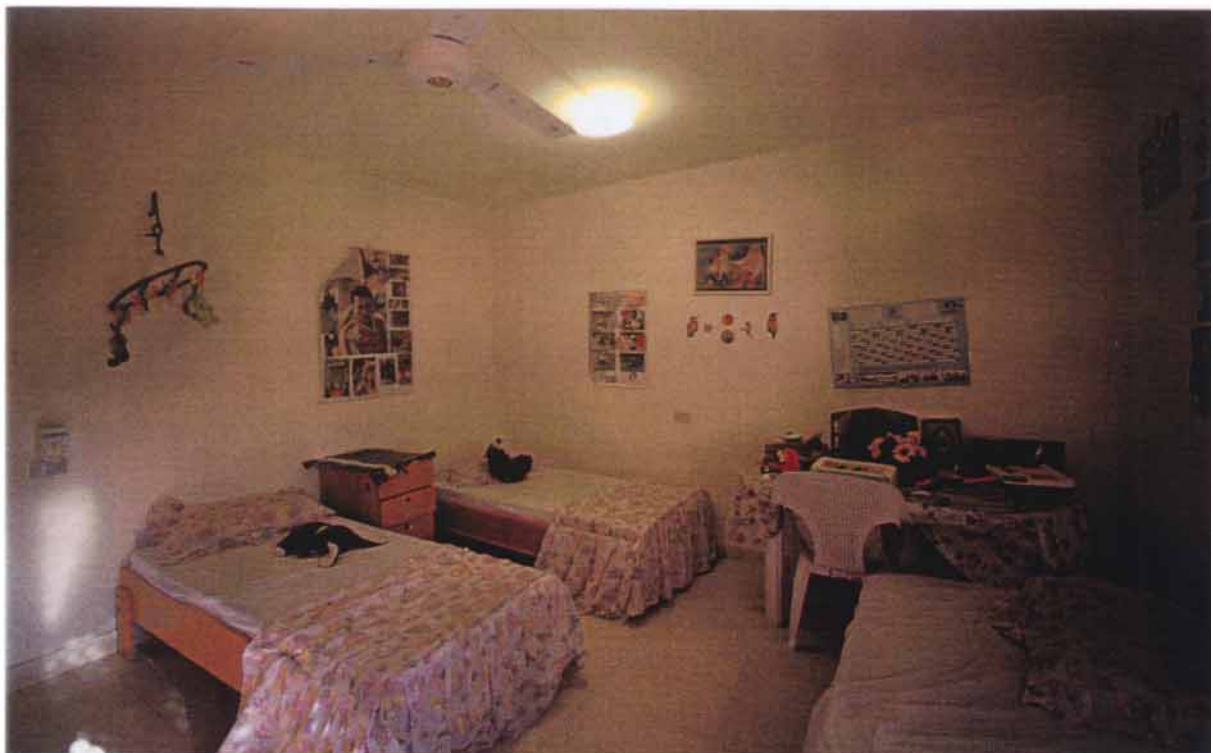


*Right: A concrete wind tower; these elements proved inefficient and are no longer in use.*



*Above: Communal living area in a family house.*

*Below: A typical bedroom for three children.*







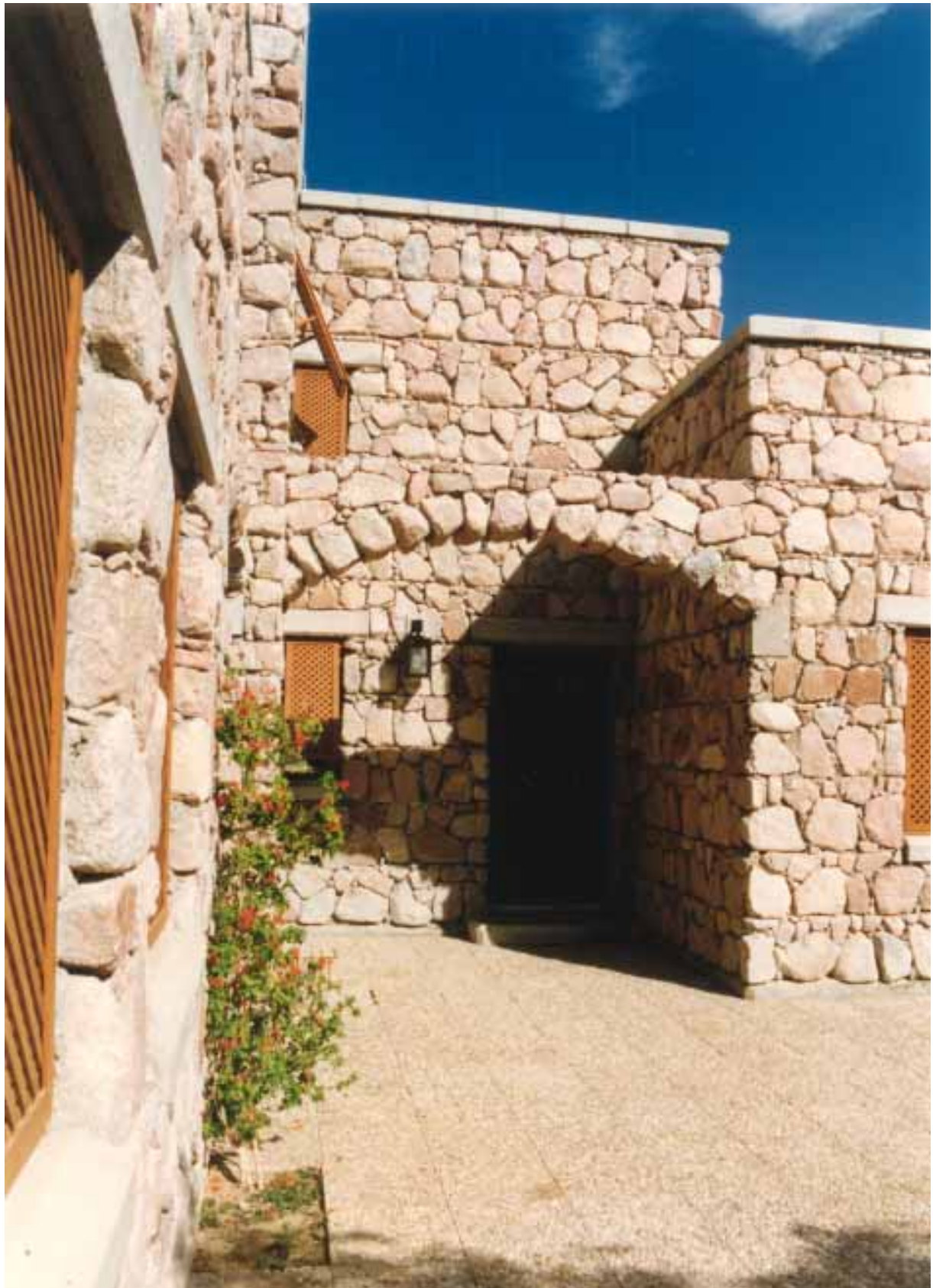
S.O.S Children's Village, Ajlun, Jordan





S.O.S Children's Village, Ajlun, Jordan





S.O.S Children's Village, Ajlun, Jordan





S.O.S Children's Village, Ajlun, Jordan





S.O.S Children's Village, Ajlun, Jordan





S.O.S Children's Village, Ajlun, Jordan



S.O.S Children's Village, Ajlun, Jordan