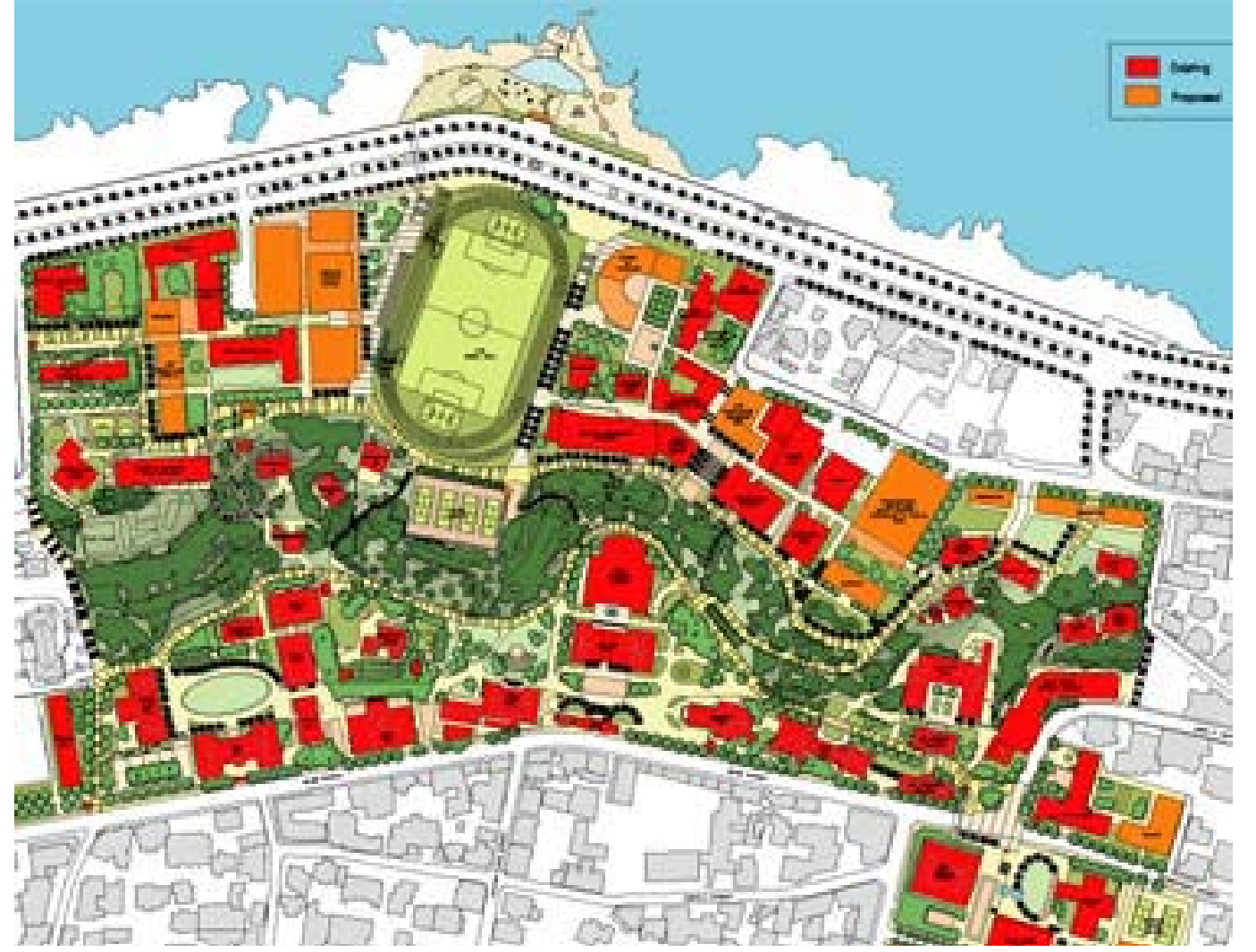


# American University Campus, Beirut, Lebanon





# American University Campus, Beirut, Lebanon

The campus master plan for the American University of Beirut defines a two-decade vision for the physical development of its 24-hectare site on the Mediterranean. The master plan addresses matching the existing condition of the campus with the future needs of the campus community in an inspiring plan that will guide this world-class institution into the future and help advance the academic mission.

The following are the key recommendations contained in the master plan:

Provide appropriately sized, state-of-the-art facilities by renovating 120,000 square meters of existing buildings.

Preserve the function of the Upper Campus as the historic center of the campus by developing a new University Overlook and creating a pedestrian promenade.

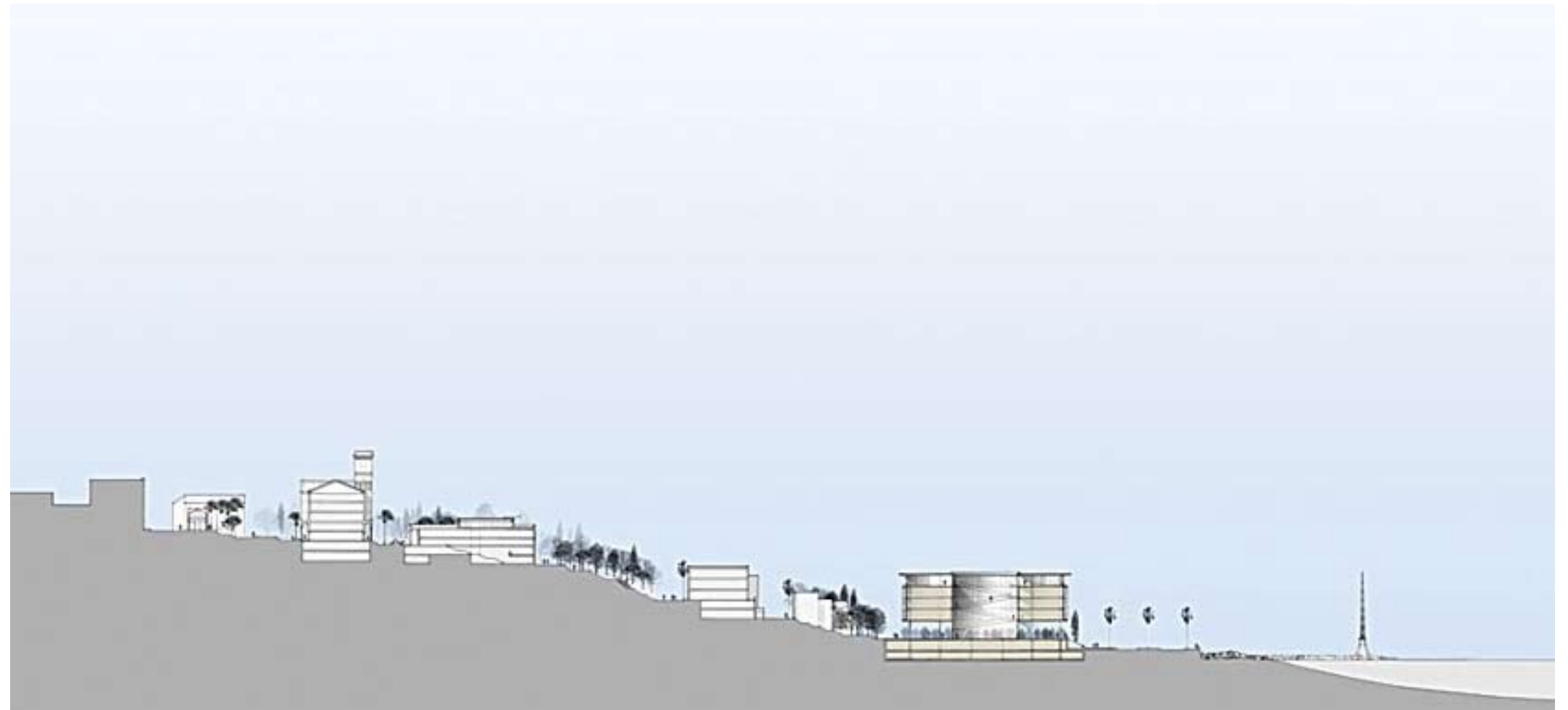
Embrace the Medical Center as part of Upper Campus through site improvements and building renovation. Continue to renovate and develop the Medical Center to ensure that it remains a leader in the delivery of medical care.

Ensure the quality of the Middle Campus through active landscape management, amplifying its importance on the campus with an active improvement program.

Transform the Lower Campus with the construction of the Hostler Center and the Business School, totaling 30,100 square meters, and include site improvements of plazas and pedestrian promenades, creating multiple well-connected, distinct centers.

Create pedestrian links among the academic, administrative, student quality of life and support facilities by locating parking on the perimeter and building well designed pedestrian links.

The plan was prepared in collaboration with Machado and Silvetti Associates, Inc. and in association with Dar Al-Handasah Consultants (Shair + Partners) and MGT of America.



The master plan for the American University of Beirut involves shaping future growth across the 70-acre site in West Beirut, Lebanon. Situated on a hill overlooking the Mediterranean, the century-old campus includes more than 80 academic, residential, and administrative buildings primarily of neo-Moorish and modern design.

The master plan provides architectural, landscape, and urban design guidelines for development in several areas: a new school of business, a sports center, and an expanded medical campus. It also includes improvements to the campus infrastructure and landscape, as well as proposing new facilities such as classroom buildings and parking structures. The plan seeks to enhance the lush environment and the dramatic views towards the water from the steep hillside site.

Subtle use of topographic conditions and urban situations. Successful urban design intervention into a very rich campus layout.

## References

Elsheshtawy, Yasser, *The Evolving Arab City: Tradition, Modernity and Urban Development*, (Routledge, London 2008).

Elsheshtawy, Yasser, *Planning Middle Eastern Cities: An Urban Kaleidoscope in a Globalizing World*, (Routledge, London 2004).

