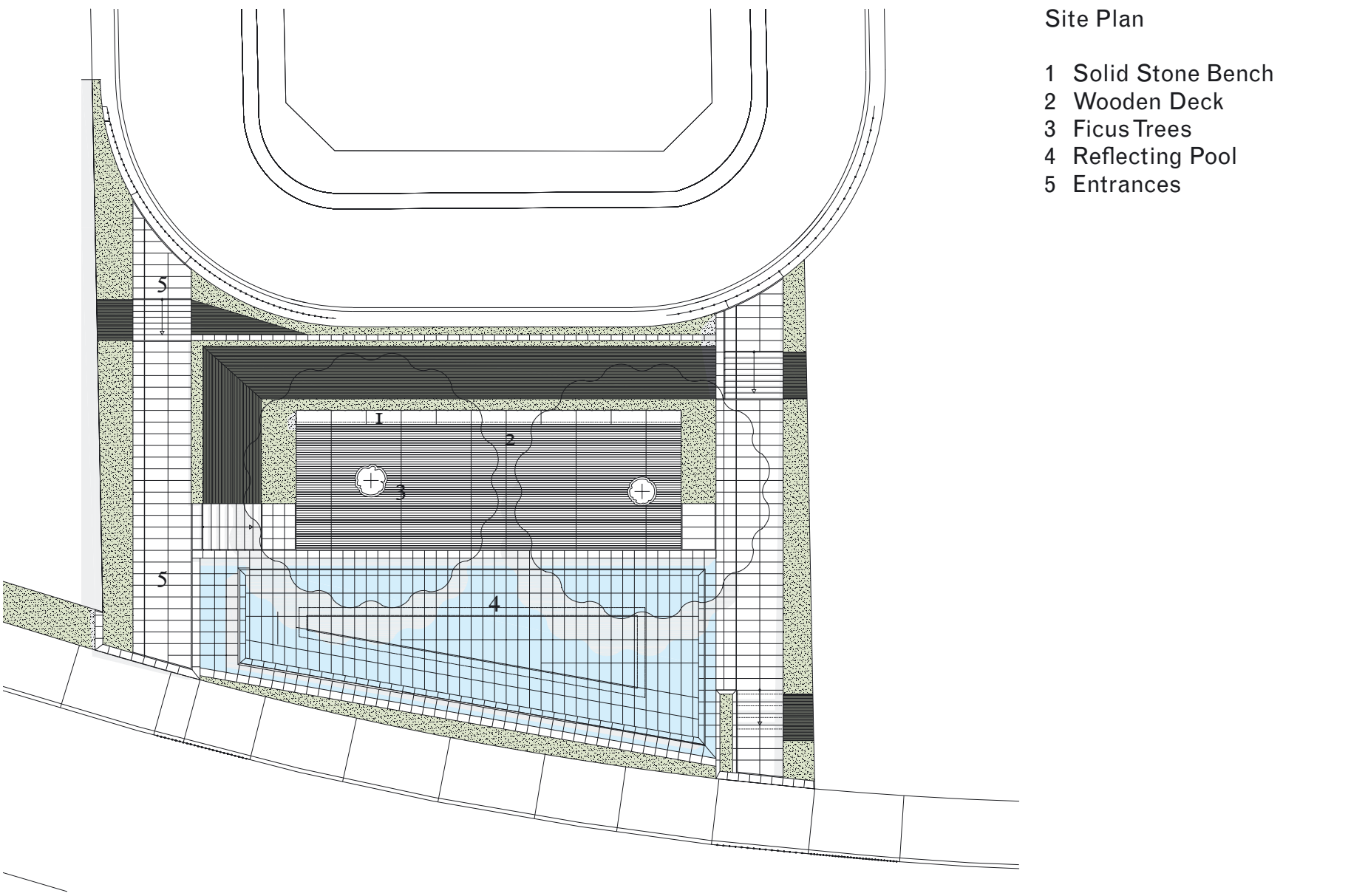
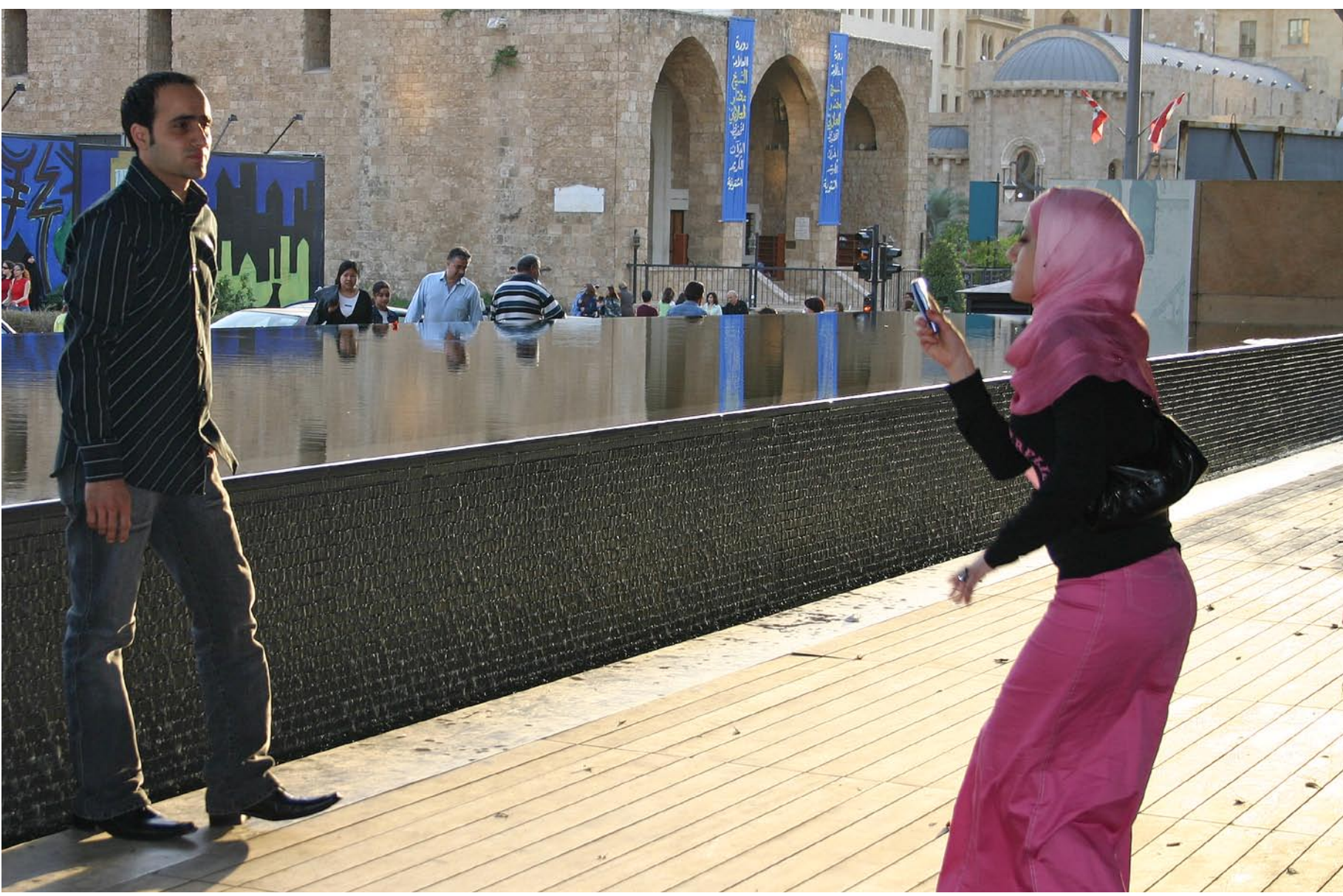


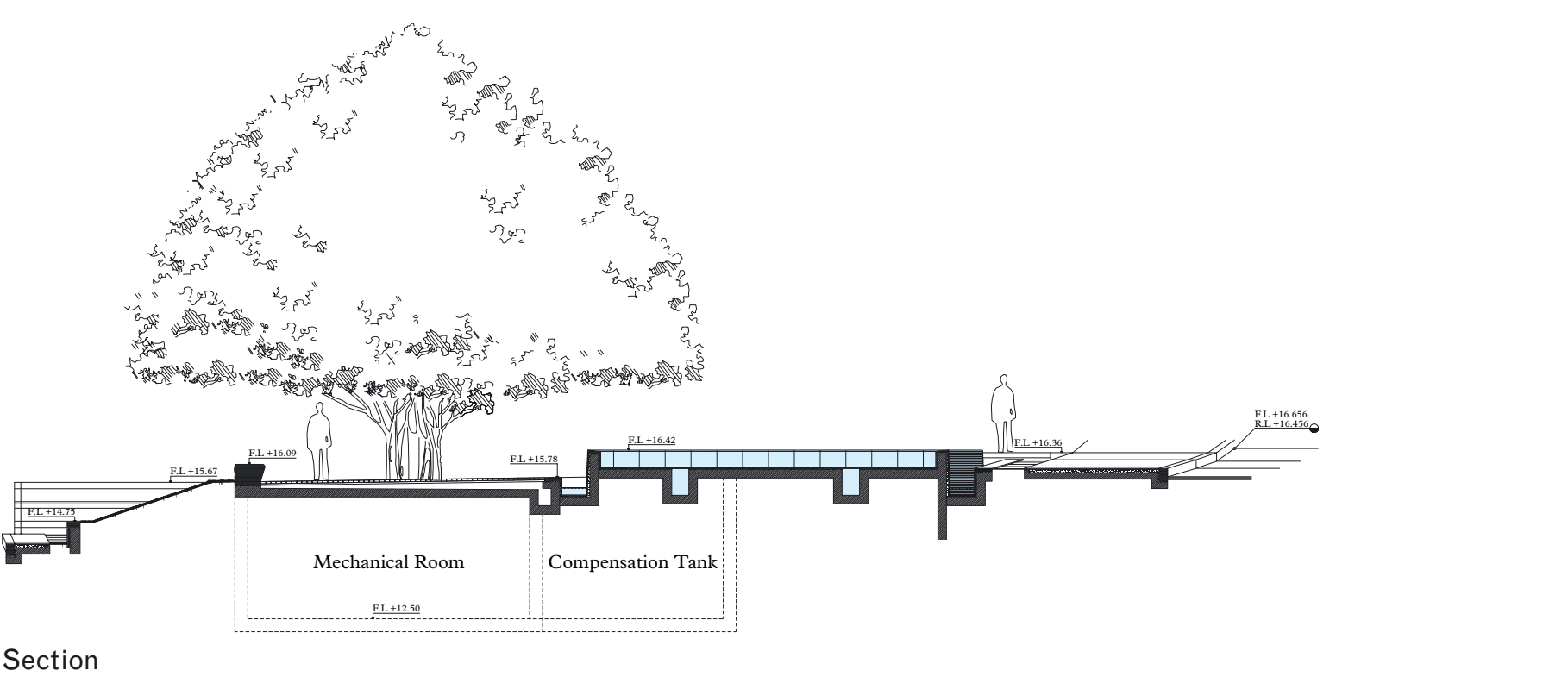
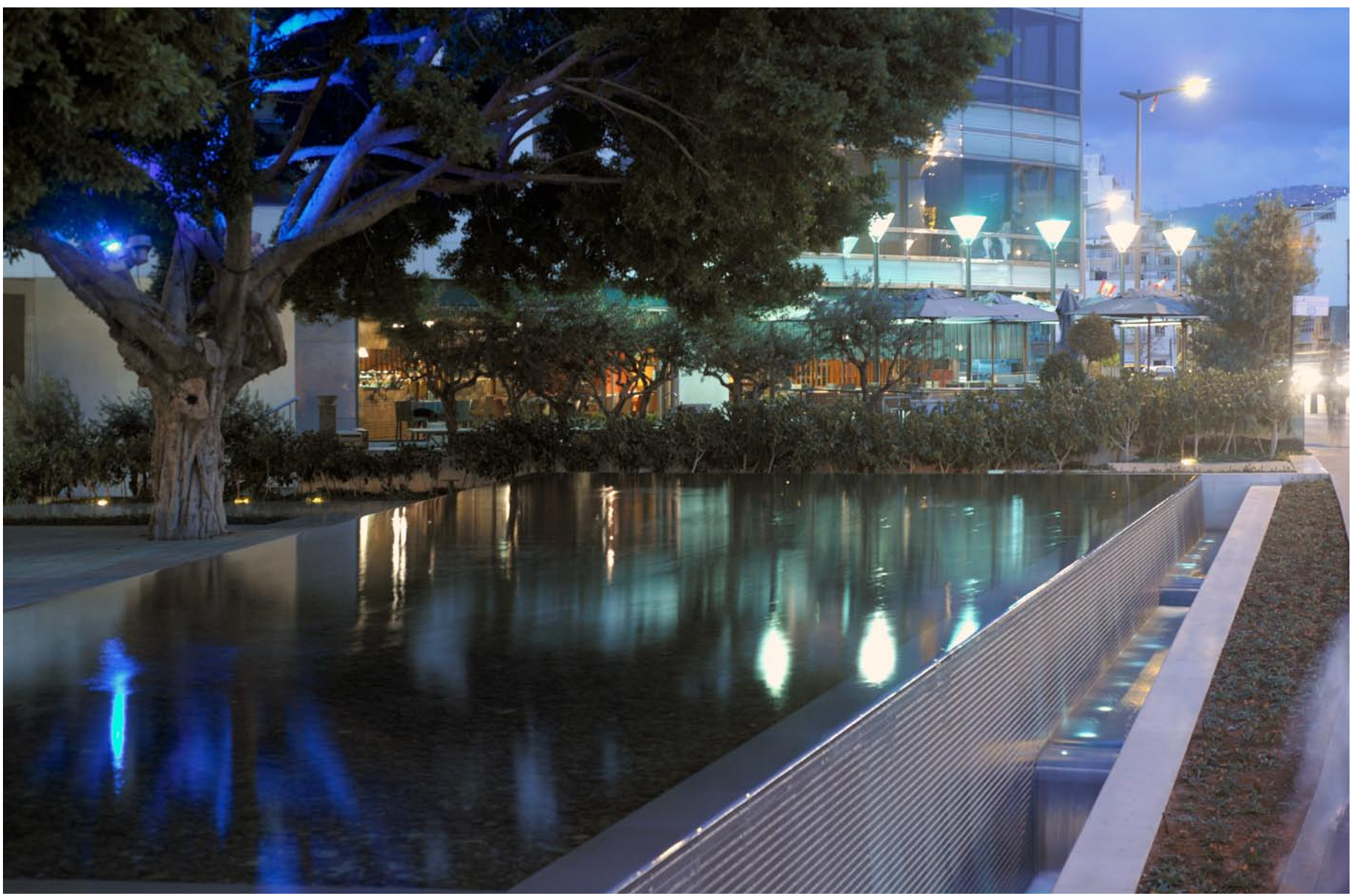
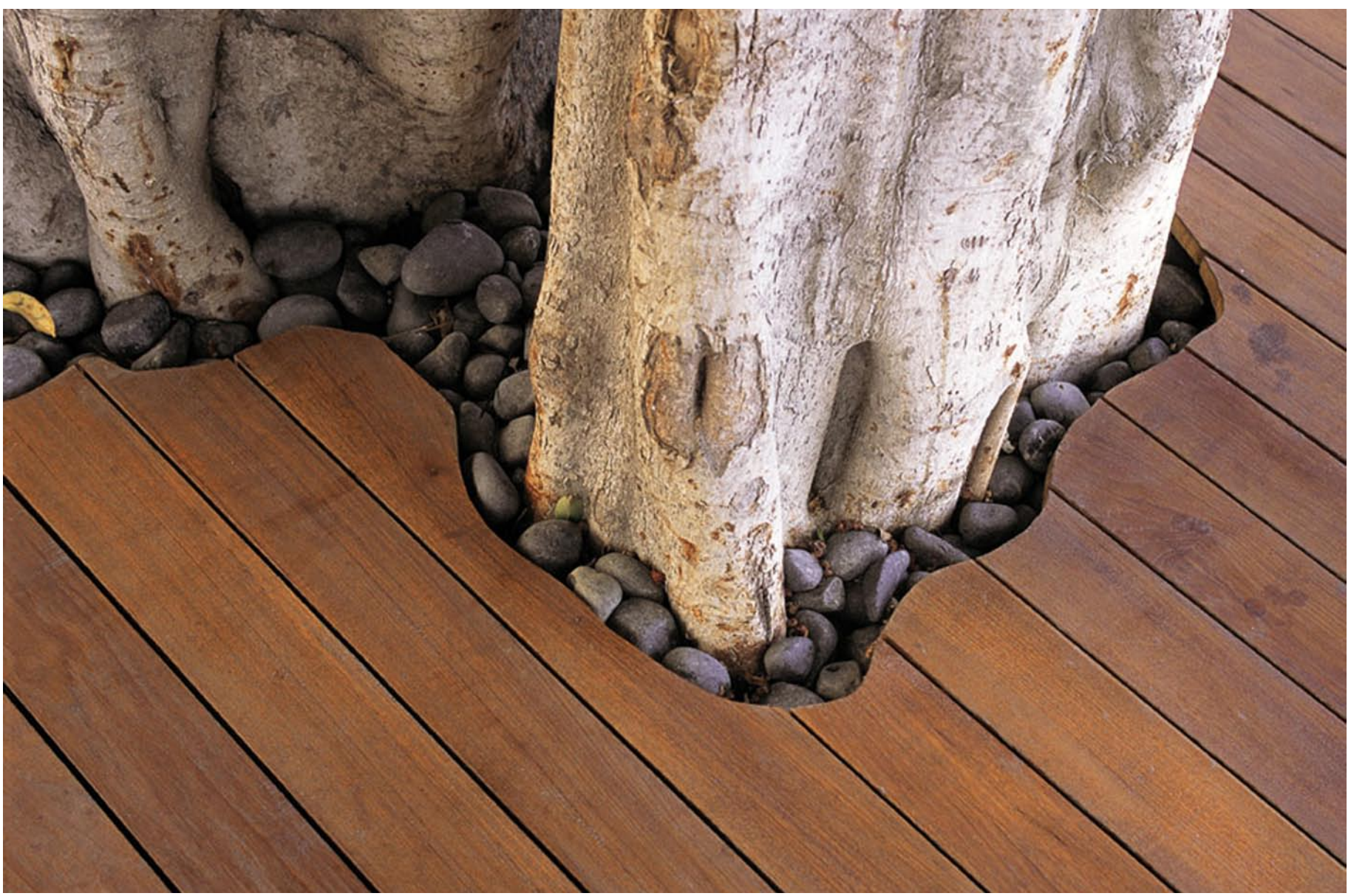
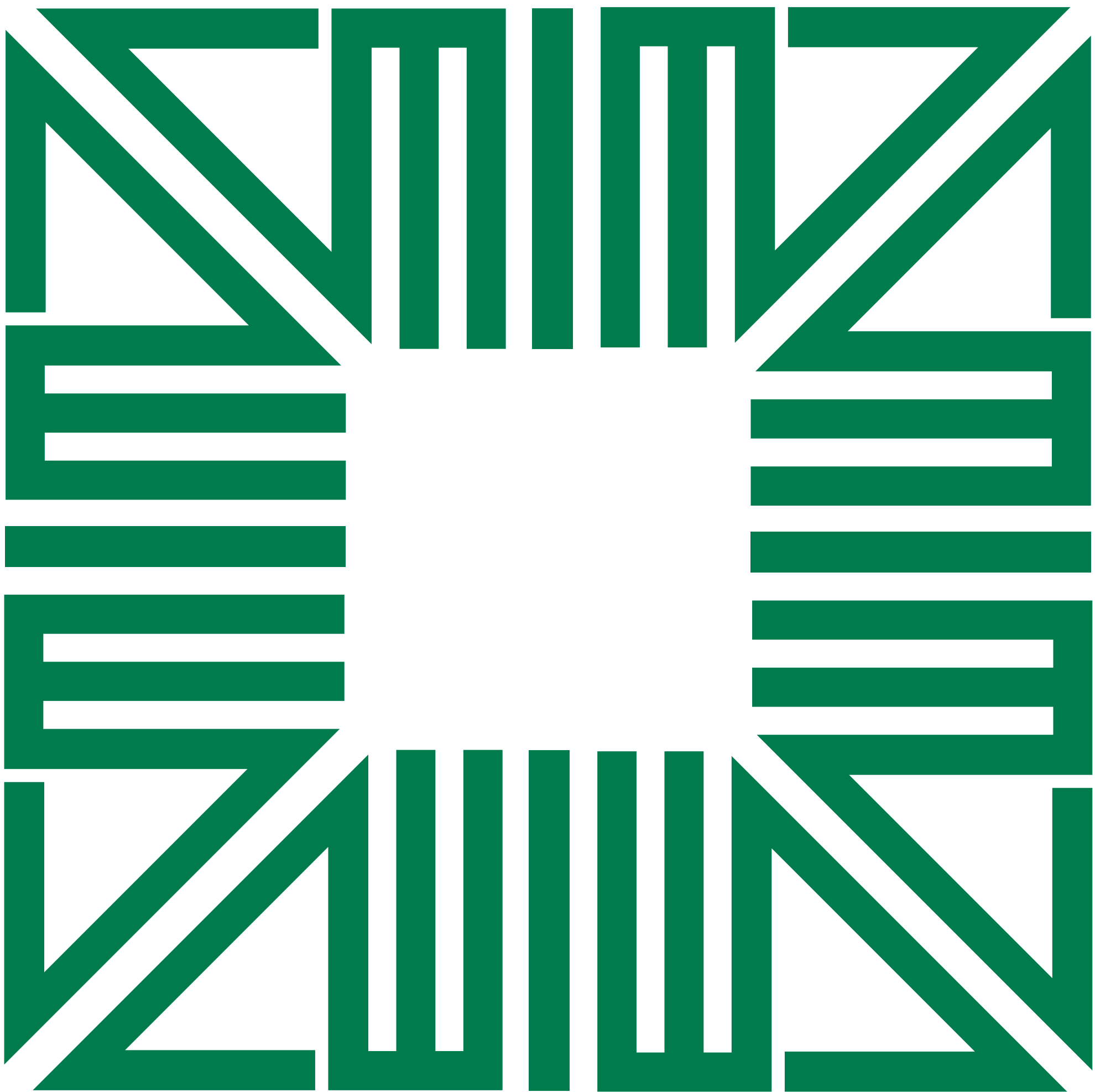


**Samir Kassir Square**  
Beirut, Lebanon

Samir Kassir Square lies in the midst of Beirut's Central Business District. It is bordered by buildings on three sides and by a street on the fourth. Despite its frenetic setting, it is a place of calm and peace. At its heart are two old ficus trees, large enough to shade most of the space. A reflecting pool with water cascading over its edges marks the border between the square and the street. The pool is flanked by a raised timber deck that encircles the trees and supports a long bench of solid stone. The western side of the square is a bermed area that accommodates the downward slope of the site. The berm has a ground cover of dwarf Natal plum (*carissa macrocarpa*), a water-conserving plant known for its dark evergreen leaves and its white star-shaped flowers and red berries that grow throughout the year.



2007



**Client**  
Solidere (Société Libanaise de Développement et Reconstruction)

**Architect**  
Vladimir Djurovic Landscape Architecture, Lebanon

**Project Data**  
Site area: 815 m<sup>2</sup>  
Cost: US\$ 322,000  
Commission: July 2002  
Design: July 2002 – October 2002  
Construction: November 2002 – May 2004  
Occupancy: May 2004

**Websites**  
[www.solidere.com/solidere.html](http://www.solidere.com/solidere.html)  
[www.vladimirdjurovic.com](http://www.vladimirdjurovic.com)