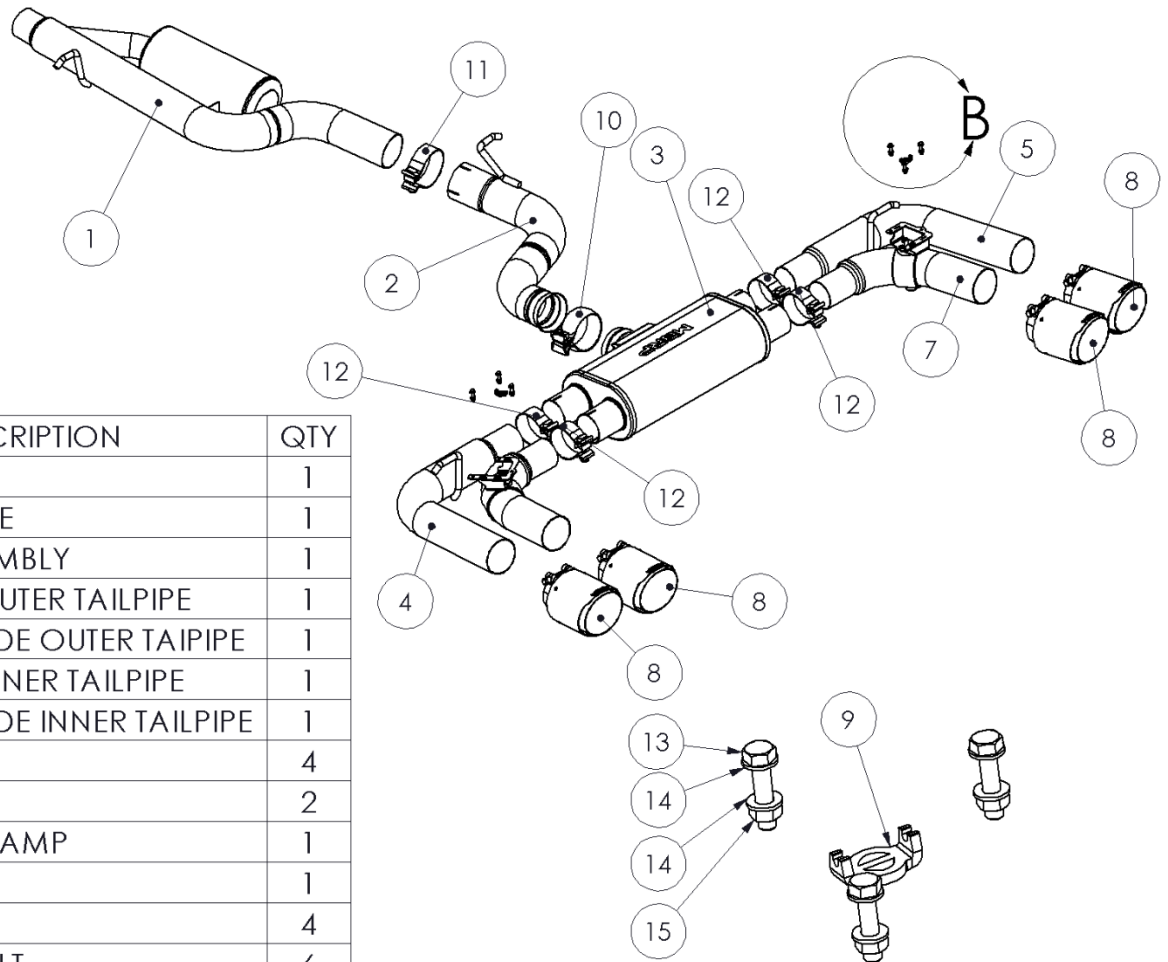


S4613

2022-UP VW GOLF R MK8 CAT BACK
- ACTIVE

MBRP®



ITEM	DESCRIPTION	QTY
1	FRONT PIPE	1
2	EXTENSION PIPE	1
3	MUFFLER ASSEMBLY	1
4	DRIVER-SIDE OUTER TAILPIPE	1
5	PASSENGER-SIDE OUTER TAILPIPE	1
6	DRIVER-SIDE INNER TAILPIPE	1
7	PASSENGER-SIDE INNER TAILPIPE	1
8	TIP	4
9	SPRING HUB	2
10	3.0" SWIVEL CLAMP	1
11	3.0" CLAMP	1
12	2.5" CLAMP	4
13	M5x22 HEX BOLT	6
14	M5 FLAT WASHER	12
15	M5 LOCK NUT	6

DETAIL B
SCALE 1 : 2

PLEASE READ BEFORE STARTING INSTALLATION

While MBRP has made every effort to ensure that all components of this system are of superior quality and properly packaged, it is the installer's responsibility to ensure the following before removal of the factory exhaust:

- that ALL components shown above are present.
- that ALL mating components fit together.
- that there are no damaged components.
- that the system you have purchased is appropriate for your vehicle year, model and configuration.
- that the system will not interfere with any modifications previously installed or planned.
- that you have read and understand these instructions.

If you have any questions or are uncertain about any aspect of the installation of this system to your vehicle please contact your dealer before commencing installation.

MBRP



Figure 1



Figure 2



Figure 3



Figure 4



Figure 5

Removal of Stock System

1. Apply penetrating lubricant liberally to all exhaust fasteners, hangers and rubber insulators.
2. Disconnect the wiring harness from both exhaust valve actuators.
Refer to Figure 1.
3. Loosen the band clamp at the inlet of the OEM catback.
Refer to Figure 2.
4. Remove the front and mid hangers from their rubber isolators.
5. Unbolt both rear muffler hangers from the vehicle and remove the complete catback exhaust from the vehicle. Remove the OEM bandclamp, both rear muffler hangers, and both exhaust valve actuators including their springs from the OEM exhaust as these will be reused during the installation of your **MBRP** performance exhaust.
Refer to Figure 3.

Installation of MBRP Performance Exhaust

1. Using the factory band clamp, install the **Front Pipe**. Do not fully tighten until all parts are installed. Install the hanger into the rubber isolator.
Refer to Figure 4.
2. Using the 3" **Clamp**, install the **Extension Pipe** onto the outlet of the **Front Pipe** and insert the hanger into the OEM isolator.
Refer to Figure 5.
3. Using a 3" **Swivel Clamp**, install the **Muffler Assembly** onto the outlet of the **Extension Pipe**.
Refer to Figure 6.
4. Install a **Spring Hub** onto the exhaust valve shaft of the **Driver-Side Inner Tail-Pipe**. Install the previously removed exhaust valve actuator and spring onto the **Driver-Side Inner Tail-Pipe** using the supplied M5 hardware. Ensure the spring engages both notches on the **Spring Hub**.
Refer to Figures 7 and 8.

MBRP



Figure 6

5. Repeat Step 4 for the **Passenger-Side Inner Tail-Pipe**.

6. Install one of the OEM rear muffler hangers onto the **Driver-Side Outer Tail-Pipe** before installing it into the forward muffler outlet using a **2.5” Clamp**.

Refer to Figure 9.

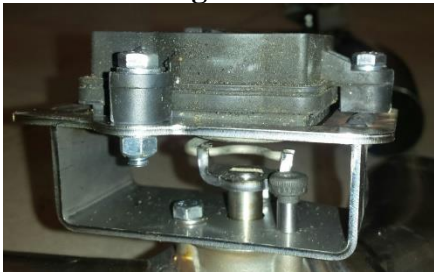


Figure 7

7. Repeat Step 6 for the **Passenger-Side Outer Tail-Pipe**.

8. Reconnect the wiring harness to the exhaust valve actuators.

Refer to Figure 10.

9. Install the **Tips** and align to your preference.

10. Tighten all hardware and clamps, starting at the front and working rearward to secure the system. Check along the full length of the exhaust system to ensure there is adequate clearance for fuel lines, vent lines, brake lines, frame, bodywork, suspension and any wiring, etc. If there is any interference detected, relocate or adjust to provide adequate clearance.



Figure 8



Figure 9



Figure 10

Congratulations! You are ready to begin experiencing the improved power, sound and driving experience of your **MBRP** Performance Exhaust. We know you will enjoy your purchase!