

COARSE MATERIAL SCREW WASHER SPARE PARTS

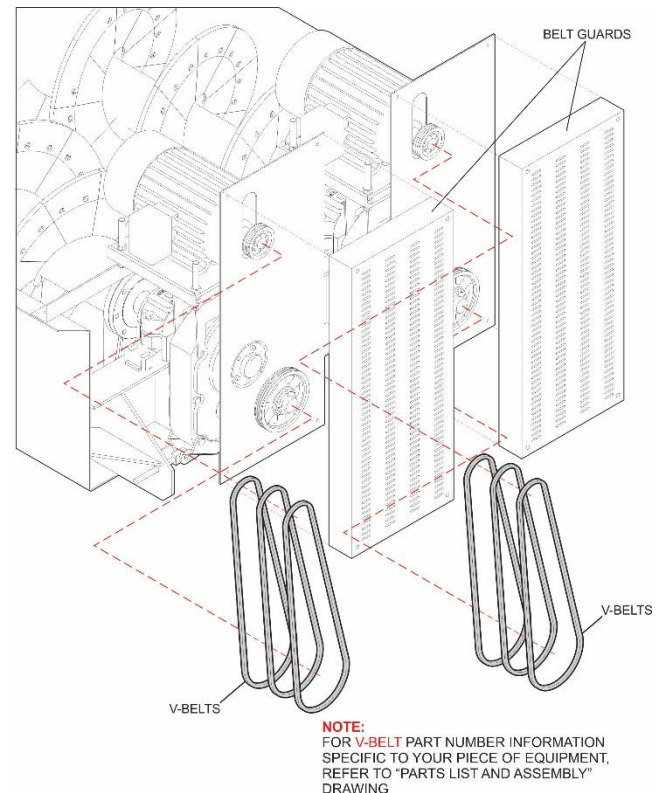
IMPORTANT INFORMATION:

It is recommended that you keep certain replacement parts at your facility. These parts will be available in the event of a breakdown and will also be available to perform any repairs that must be made as a result of regularly scheduled maintenance checks. **McLanahan Corporation** stocks a wide variety of commonly used components; however, storing these parts at your facility, will eliminate the expense of air-freighting critical parts that may be required during a breakdown situation. Refer to the "PARTS LIST AND ASSEMBLY" drawing(s) to assist with parts identification, part numbers and quantities. Contact the Parts Department at **McLanahan Corporation** for price and availability of all parts for your **McLanahan** equipment.

RECOMMENDED STANDARD SPARE PARTS:

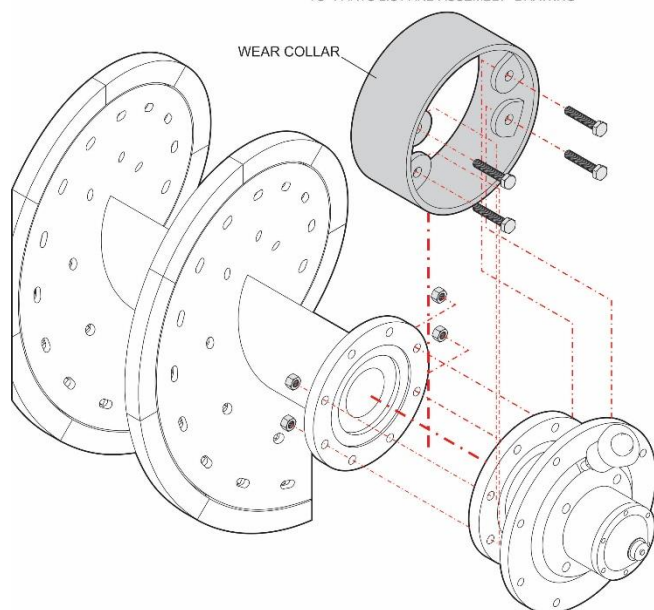
QUANTITY	DESCRIPTION
1	Pillow Block Bearing Housing
1	Pillow Block Bearing
1	Pillow Block Bearing Adapter
1	Lower Bearing Assembly
1	Lower Bearing Rebuild Kit
1	Seal Installation Tool
1	Wear Collar
1-Set	V-Belts (Highly Recommended)
1-Set	Wear Shoes & Fasteners (optional)
1-Set	Paddles & Fasteners (optional)

V-BELTS:

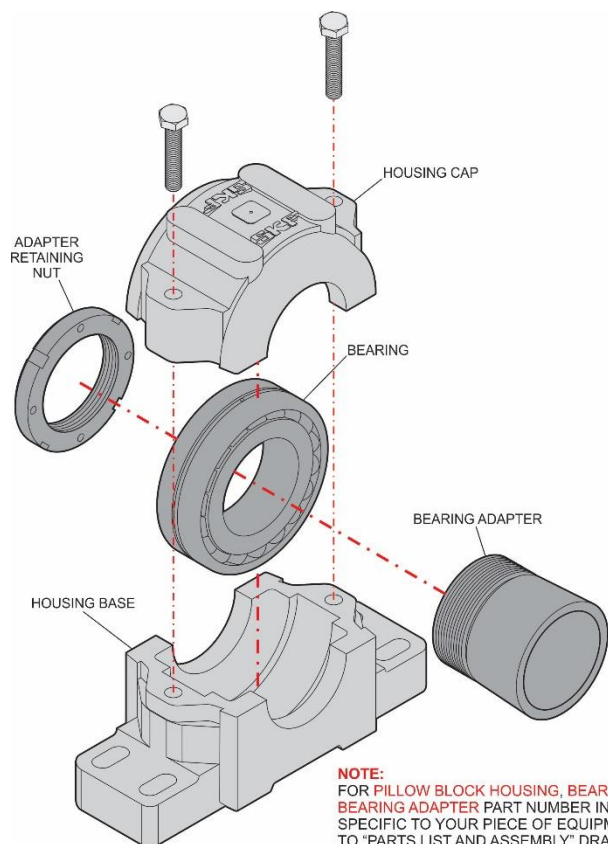


WEAR COLLAR:

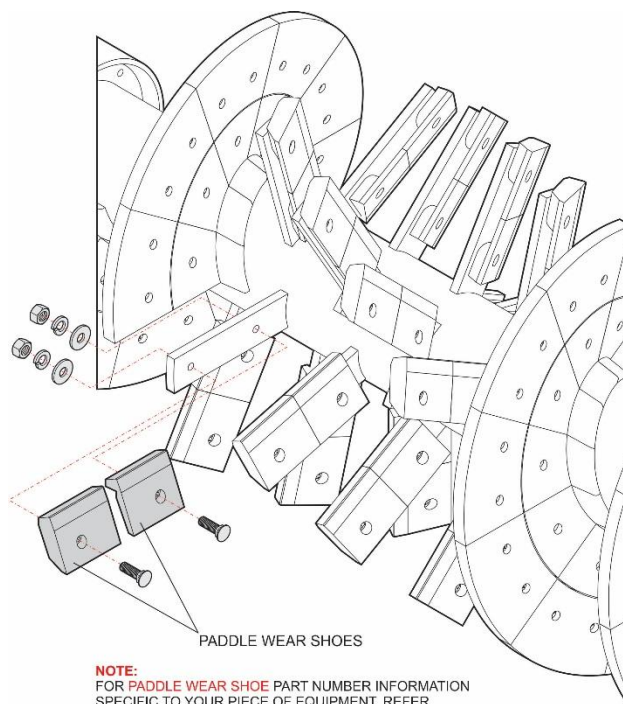
NOTE:
 FOR **WEAR COLLAR** PART NUMBER INFORMATION
 SPECIFIC TO YOUR PIECE OF EQUIPMENT, REFER
 TO "PARTS LIST AND ASSEMBLY" DRAWING



PILLOW BLOCK BEARING:

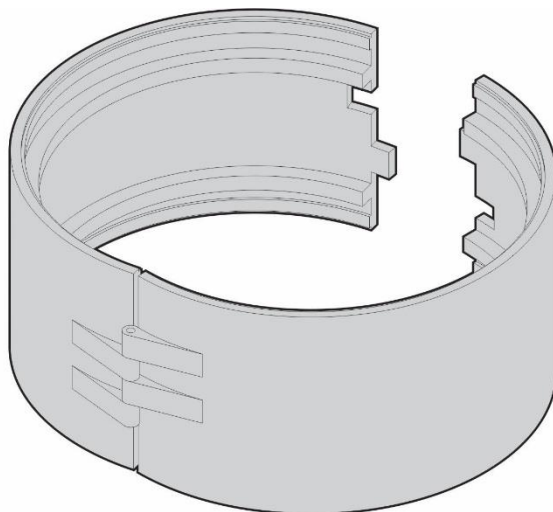


PADDLES AND WEAR SHOES:



NOTE:
 FOR **PADDLE WEAR SHOE** PART NUMBER INFORMATION
 SPECIFIC TO YOUR PIECE OF EQUIPMENT, REFER
 TO "PARTS LIST AND ASSEMBLY" DRAWING

SEAL INSTALLATION TOOL FOR LOWER BEARING ASSEMBLY:



PART NUMBER	WHERE USED
2-992-00138	XXXXXXXXXXXXXXXXXXXX
2-992-00139	3-992-14603 (20"-36" SCREW WASHER)
2-992-00140	3-992-16009 (44" SCREW WASHER) 3-922-16010 (36" LOG WASHER)
2-992-00141	3-922-17800 (46" MUDMASTER) 3-992-17803 (54" SCREW WASHER & 38" LOG WASHER) 3-992-17804 (66" SCREW WASHER)

Please contact our Parts & Service Department for current Pricing and Lead Times.