



AIA
Orange County

AIA California Firm Award Jury

On behalf of the Orange County Chapter of the American Institute of Architects, I am honored to nominate LPA for consideration for the 2021 AIA California Firm Award. Within the body of this portfolio, you will find the accomplishments of an architectural firm that has consistently been a model for diversity, inclusion and design excellence.

LPA has developed a firm culture that elevates young talent and emphasizes an informed designed process. As a result, LPA creates places that are more efficient, enjoyable, and healthier for the people who use them. Their work since 1997, when the firm was reorganized with a new name and leadership, has been recognized for design excellence a remarkable 266 times by national, state, and chapter AIA components, including 10 AIA California awards.

Over the years, LPA has been a tireless advocate for education, mentoring and sustainable practices, not only with their own work, but through their involvement and leadership with AIAOC, AIACA, and AIA. LPA leaders have served on the AIAOC Board of Directors, chaired local design award committees and student design competitions; presented at AIA conferences; and served on the AIACA Executive Committee and Board of Directors.

As a firm leader and now Executive Director, I have witnessed firsthand the culture of leadership that LPA has created, which looks to promote within and encourage professional growth. LPA CEO Wendy Rogers, FAIA, started as an intern with the firm almost 30 years ago.

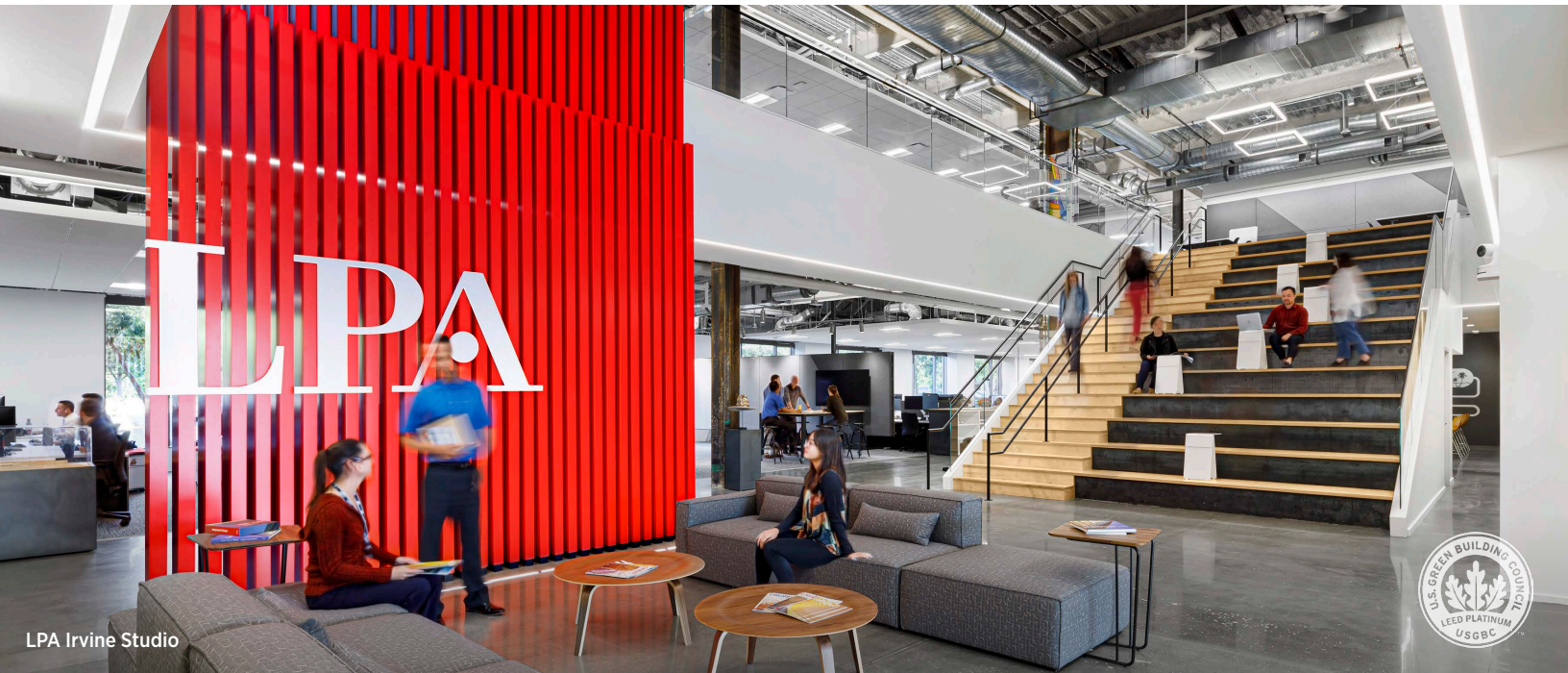
What I find most important about LPA's work is their commitment to the connection between sustainability and design excellence. They have created a practice that instills that spirit across many sectors including education, workplace, and civic space. The firm practices a design ethos that is resistant to fashion and looks to develop innovative designs to address issues of energy, conservation, and healthy communities.

LPA's contributions to the industry, our communities, and the profession, and the link they have forged between sustainability, healthy environments and design excellence deserve recognition. I trust the jury will find the information presented here compelling. LPA will be a worthy addition to the list of AIA California Firm Award winners.

Sincerely,

Jeffrey Gill, FAIA
Executive Director
AIA Orange County

STATEMENT OF CONTRIBUTION



Changing Lives by Design

Over the last 20 years, LPA has built a multi-discipline firm focused on collaboration, inclusion and an integrated design process that connects building performance and design excellence. The firm's success and influence on the industry reflects a culture that emphasizes diversity, education and promoting young talent, including CEO Wendy Rogers, who took over the role in 2017 after 30 years with the firm, starting as an intern.

Throughout its history, LPA has taken a leadership role in promoting energy efficiency and sustainability, setting new benchmarks for what defines a great project.

- For two consecutive years, LPA has been the largest firm in the country to meet the AIA 2030 Commitment target of a 70 percent reduction in energy use in new buildings.
- The firm has earned 266 national, state and local AIA design awards since 1997.
- The education practice has earned 40 Coalition for Adequate School Housing (CASH/AIA California) awards — more than any other firm.
- In 2020, the firm was honored with a national AIA COTE Top 10 Plus award for the Environmental Nature Center and Preschool in Newport Beach, California.

Working with AIA chapters from Eureka to San Ysidro, LPA has been a tireless advocate for the benefits of a research-driven design process and the larger role of an architect in working with communities to create better performing buildings. Its architects have served in top leadership roles in chapters around the state, sharing best practices and innovations. The firm has a special passion for education and working with students, preparing the next generation of architects to address the most pressing issues of our time.

266

AIA Awards
Since 1997

1st

LEED NC
Project in the U.S.

73.5%

Reduction in
Energy Use (2019)

14

AIA Chapters
COTE Awards

140

Education
AIA Awards

BIOGRAPHY OF FIRM



LPA San Jose Studio



Who We Are

At LPA, we've created a firm that breaks down the barriers between disciplines, drawing upon the expertise of the different teams to find the best answers for our clients. At every level, we've eliminated the traditional hierarchy to encourage collaboration and the flow of ideas. Every voice is heard. All input is valued. The focus is on the "we" not the "me" as we work with communities to develop projects that work better for people.

In every way, it is a much different firm than the studio founded in Leason Pomeroy's garage in 1965, which was replaced with new ownership, new leadership and a new name in 1997. Today, LPA is an integrated, multi-discipline firm working out of six studios in California and Texas, including studios in Sacramento, San Jose, Irvine and San Diego. The modern LPA has developed as a prototype for a diverse, inclusive firm that supports the growth of young talent. Forty-six percent of the staff are women; 41 percent are racially or ethnically diverse. Fifty percent of the staff have been at LPA for more than 10 years; many more than 25 years.

The firm's culture focuses on education and personal growth. Firmwide sessions are held monthly with a focus on sustainability. TechTalks share the lessons learned from projects; quarterly master's courses offer deeper understanding of specialized topics. More than \$800,000 in professional development grants has been issued to staff since 2010. In 2020, this on-going commitment culminated in the creation of the LPA Interdisciplinary Diversity Scholarship Program, a renewable scholarship to encourage and inspire future architects.

6

Regional
Studios

9

Market
Segments

400

Current
Employees

9

Integrated
Disciplines

46%

Women
Employees

41%

Racially &
Ethnically Diverse

MEETING THE 2030 COMMITMENT

Every day... On every project... LPA illustrates that a large firm can meet the 2030 Commitment by making energy performance and the AIA COTE Top 10 criteria the foundation of every design.

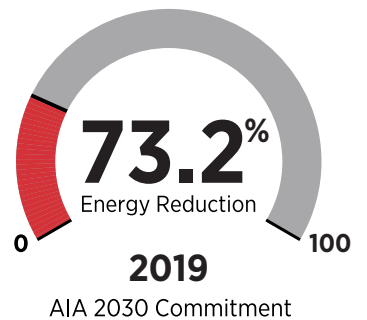
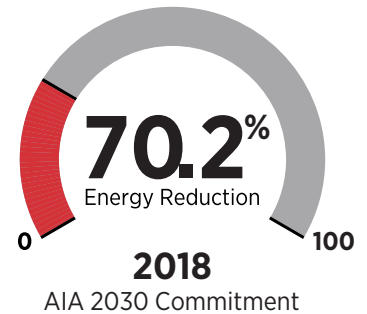
From 2012 to 2018, LPA buildings reported to the AIA 2030 Commitment averaged a 63.7% energy reduction; the industry average in 2018 was 43.6%. In 2018 and 2019, the firm surpassed the 70 percent target across more than 5 million square feet of projects, including schools, civic, healthcare and traditional workplace environments. With a focus on simple, cost-effective design strategies, LPA accomplished the result across a wide variety of typologies and settings, proving that energy efficiency goals can be achieved on a large scale.

LPA was the largest firm in the U.S. to reach the **AIA 2030 Commitment** in **2018** and **2019**

LPA embraced energy performance and sustainability as a core value of the firm. In 2004, the firm committed to an internal goal of making projects perform 25% better than California's Title 24 energy code. In 2007, the firm began hiring engineers to better address building performance. A research team, LPared, was added in 2016 to improve the evaluation of performance and develop actionable research.

At LPA, there is no "Sustainability Director"; today, 83 percent of the staff is LEED accredited with project teams having ownership of the design performance. LPA may be the only firm in the state with a LEED-AP CFO and HR Manager.

We also believe in practicing what we preach. The firm's Irvine headquarters, opened in 2019, is LEED Platinum (and two-star Fitwel certified). All of LPA's offices are certified LEED Gold or Platinum CI.



In 2019, the firm began publishing the EUI on all projects.

163

LEED Projects
Completed

150

In Construction
& Design Phases

5M SF

Reported Since 2012
42% LPD

20M SF

Reported Since 2012
61% Energy Efficiency



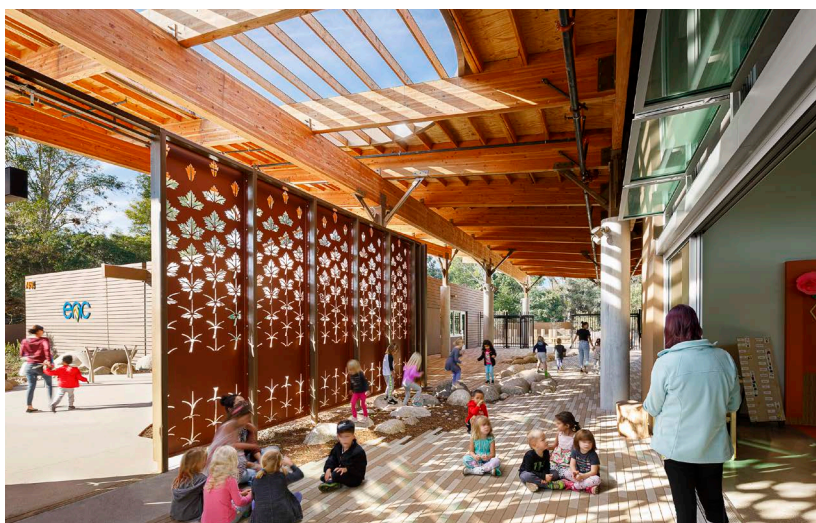
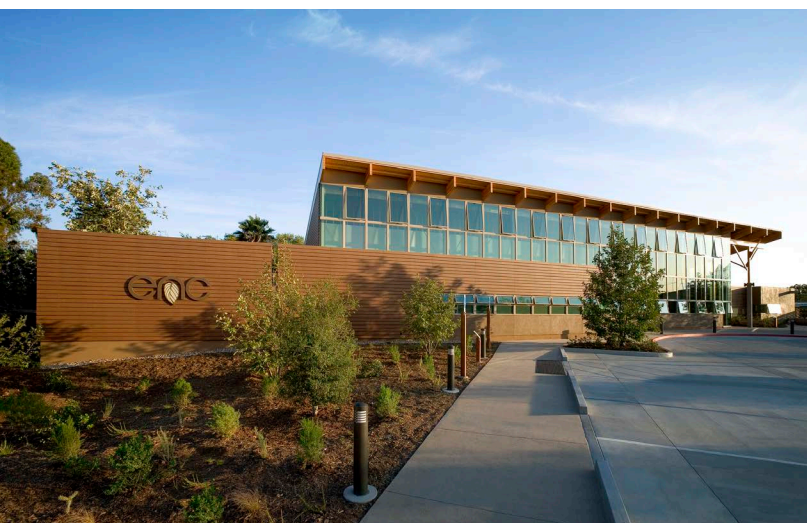
Premier Auto Group, North American HQ | 1998
First LEED NC Building in the U.S.



CSU Northridge, Student Recreation Center | 2012
2013 CAE Educational Facility Design Award of Excellence



Coastline Community College, Learning Center | 2012
2014 CAE Educational Facility Design Award of Merit



Environmental Nature Center & Preschool

NEWPORT BEACH, CALIFORNIA | 2007, 2019

A Net-Zero 'Living Laboratory' for Sustainable Design

The Environmental Nature Center & Preschool buildings, located on a 4.7-acre campus, are LEED Platinum, net-zero and do not use fossil fuels. Through simple and cost-effective integrated design strategies, the center is a living laboratory and educational tool for smart green design and conservation for the entire region. The preschool is pursuing certification through the Living Building Challenge's Petal Certification, one of the first projects in the region to achieve this level of sustainability and healthy environments.

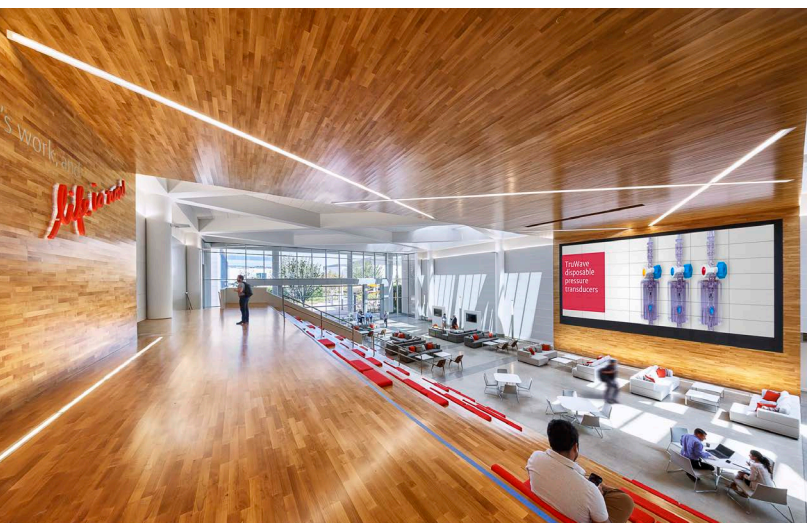
RECOGNITION

AIA C.O.T.E. Top Ten Plus
AIAOC Honor Award: ENC
AIAOC Honor Award: ENC Preschool
ASLA Honor Award

INTEGRATED SERVICES

Architecture
Landscape Architecture
Interior Design
Engineering





Edwards Lifesciences Starr Atrium

IRVINE, CALIFORNIA | 2018

A LEED Platinum, net-zero centerpiece for a medical device maker

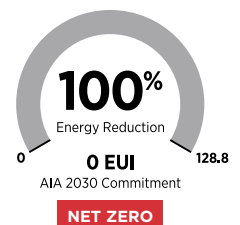
The heart of the campus renovation for Edwards Lifesciences in Irvine, California, is the LEED Platinum, 22,000-square-foot Starr Atrium, which serves as a bridge between two existing office buildings and provides a dramatic new entry to the corporate headquarters. The net-zero atrium is a model for sustainable spaces, with a rooftop photovoltaic array, a displacement ventilation system and LED lighting with controls designed to minimize the project's energy use. An innovative box truss structural system designed by LPA engineers spans the space and maximizes the clear height, while supporting the skylight that runs the length of the atrium.

RECOGNITION

AIACA Merit Award
AIAOC Honor Award
AIAOC COTE Award
ASLASC Merit Award

INTEGRATED SERVICES

Architecture
Landscape Architecture
Interior Design
Engineering



RESHAPING EDUCATION

LPA has developed deep relationships with educators, administrators and families around the country, exploring the challenges and opportunities in their communities. Our research-driven approach positions the architect as a facilitator, working with all the stakeholders to develop flexible, responsive campuses that address the mind, body and spirit of learners.

At every step, our design process is focused on the students, and the core belief that learning happens everywhere, inclusive of the outdoors. This student-centric, research-driven approach incorporates our in-house research department, LPAred, which works to ensure we are always using data and analysis to make the connections between environments and pedagogy.

The firm's lengthy list of awards at every level of education recognizes the effect LPA's process has had on outcomes and achievement, developing facilities that will inspire and motivate students and educators for generations.

5

National
CAE Awards

100,000+

Stakeholders and
Community Engaged
in 30+ years

500,000

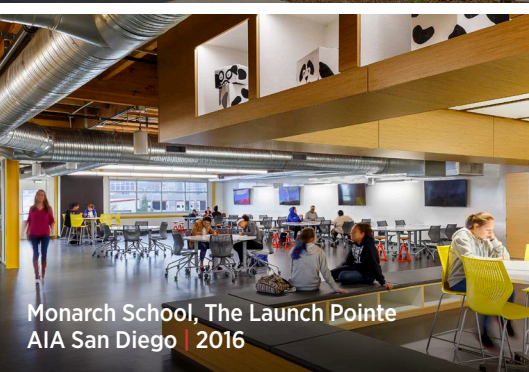
Students Attend LPA
Designed Schools Daily

100+

K-12 Districts
Impacted

550+

Education
Projects



LPA has won **40 Coalition for Adequate School Housing (C.A.S.H./AIA California)** awards and **25 Community College Facility Coalition (CCFC)** awards, more than any other firm in California.





Tarbut V'Torah Community Day School

IRVINE, CALIFORNIA | 1995-2020

A student-centric design embraces 'learning happens everywhere'

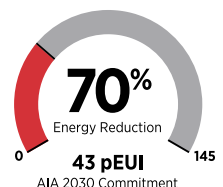
An extensive re-imagining of an existing 21.5-acre K-12 community day school created a campus dedicated to 21st century learning, with indoor and outdoor learning environments, makerspaces and STEAM Labs, reflecting the school's focus on student-directed, hands-on learning. A 400-square-foot green roof, stormwater retention and bio-infiltration units, and drought-resistant landscaping turn sustainability into a teaching tool. LPA's integrated team on Tarbut V'Torah Community Day School earned awards for architecture, landscaping, engineering and lighting design.

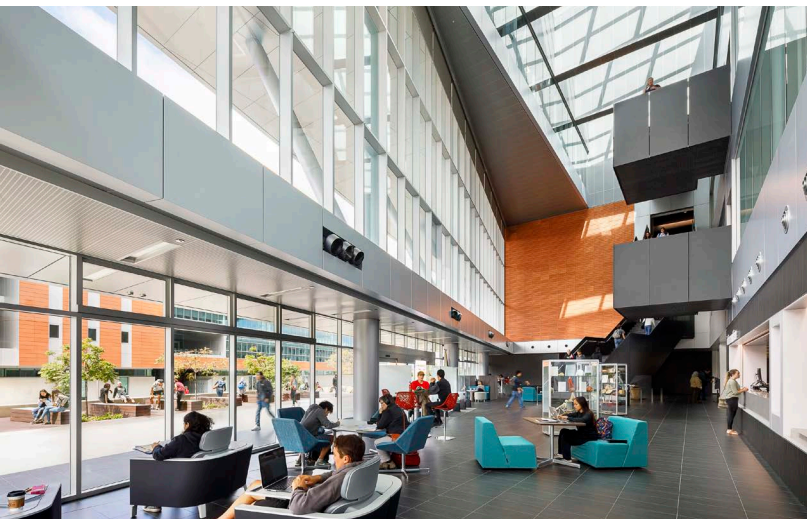
RECOGNITION

AIA Education Facility Design Award of Excellence
AIAOC Honor Award
ASLASC Honor Award
ASLASC Excellence Award

INTEGRATED SERVICES

Architecture
Landscape Architecture
Interior Design
Engineering





Palomar College Learning Resource Center

SAN MARCOS, CALIFORNIA | 2019

A modern reinterpretation of a library

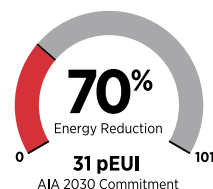
The design for Palomar College's new 85,000-square-foot, four-story Learning Resource Center (LRC) re-imagines the traditional concept of a library, creating an open, bright facility which will serve multiple purposes now and into the future. LPA's integrated team was involved in every aspect of the LEED Gold design, including structural, mechanical, plumbing, interiors and landscape. A 70-percent energy reduction was achieved with the help of the "floating" upper floor, which shades the lower floors and harvests abundant natural light. The LRC is part of a cluster of four buildings designed by LPA, each fitting together to create connected open spaces that unite the different programs within the campus core.

RECOGNITION

AIAOC Merit Award
AIASD Merit Award
AIAOC Unbuilt Honor
CCFC Award of Excellence

INTEGRATED SERVICES

Architecture
Landscape Architecture
Interior Design
Engineering



MAKING A DIFFERENCE

We believe diversity and inclusion are essential to innovation, belonging, and representation.

As a firm, we are most successful when we can be our best selves. Our aim is to foster a culture where every employee believes that anything is possible, regardless of their starting point, and the spaces and places we design celebrate the variety of human experience. LPA's culture seeks to inspire young designers and remove the traditional practice hierarchy, creating an environment that supports equity, education and personal growth.

Equity, Diversity & Inclusion

Our collaborative culture embraces “we” over “me.” As an integrated firm, all disciplines must participate, be present, and promote inclusiveness to realize the best solutions.

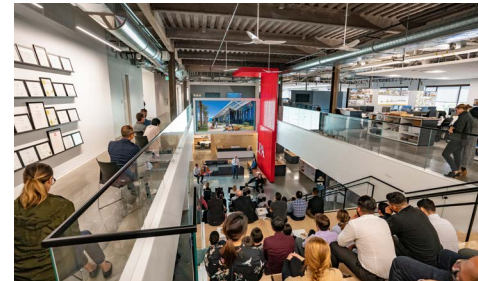
- LPA Interdisciplinary Diversity Scholarship Program supports designers in underrepresented communities
- Equity, Diversity & Inclusion Advisory Committee reports to CEO
- Engagement survey with more than 90% employee engagement
- Annual gender pay equity audit by job title
- Commitment to an inclusive, community-based design approach



Training + Education

The firm's culture focuses on education, personal growth and the value of informed design with an integrated team.

- LPA+U provides monthly all-hands education sessions with focus on sustainability
- Regular TechTalks for interactive mentoring on design quality
- Quarterly Master Classes for in-depth training
- More than \$800k in professional developments grants since 2010 that include:
 - Participation in AIA National Leadership Academy
 - Innovative research on mass timber, circadian rhythm, and glazing systems



Community Stewardship

The LPA Foundation was established in 2015 to strengthen communities through increased engagement and contributions supporting education, research and resiliency. In five years we have provided more than 2,450 employee volunteer hours, and more than \$507,000 in financial support.

- Work with elementary school children in underserved districts to encourage architecture and design through BEEP and ACE
- On-going research on key community topics, such as seismic design and improved health and wellness
- University scholarships and donations to local non-profit organizations
- K-12 COVID Pandemic Planning
- Mentor students at Cal Poly San Luis Obispo and Cal Poly Pomona



Team Health

The LPA Balance program focuses on team well-being through resources, events and activities that can be applied in everyday life.

- Work-life balance with flexible work schedules
- Bi-weekly Firm Workouts
- Creative Fitness Challenges
- Biometric Health Screenings
- Nutrition, breathing & mindfulness sessions
- Free mental/behavioral health resources (EAP)

