



Volume XXV, Summer 2018

2018 ANNUAL MEETING

Place:

Vermilion Community College Auditorium

Date: Saturday, August 4, 2018

Time: 8:30 am refreshments and social time

9:30 am Meeting Begins

From the President by Ward T. Nelson

A few dedicated Burntside Lake property owners were visionary in forming a lake association in May 1976 (42 years ago). They could only imagine some of the issues that might impact this magnificent creation of nature. As stated in our Articles of Incorporation and our By-Laws, the purpose of our association is to enhance, promote and protect the interests of property owners on Burntside Lake and the immediate watershed thereof; to protect the environment thereof; and to contribute to the recreational, social and civic welfare of the community. We have no political agenda.

Since we have an organized association we are recognized and respected by government organizations who have the responsibility for issues that impact our lake. We are consulted and encouraged to speak with one voice on issues that government has responsibility for enforcing. We have dealt with issues concerning zoning, sewage treatment, pollution, safety, licensing, rules involving docks, floating platforms, boating, and aquatic invasive species. We are often asked the size of our membership. Frankly, we have had a rather low key approach to membership but we want to put more emphasis on membership now that issues have become more complex and we have become stewards of significant funds as we take an active role in the fight against aquatic invasive species.

Beginning this year, we are taking a more direct approach to membership by sending out a letter and a Membership Form instead of relying on a tear off-sheet on the back page of our newsletter or attendance at our annual meeting. Please consider it an absolute privilege to become a member of the Burntside Lake Association for an annual amount of only \$20.00. Also encourage family members who have a stake in the lake to become members.

Fourteen years ago we obtained the web site domain name of www.burntside.org – a visionary act. Recently we have made a significant investment in our web site with the intent that it should be our primary channel for information about our lake. Please explore the information available on the site. Also, we have implemented an email news capability which you can subscribe to at no cost. On the home page there is a light grey box on the right side with a button that reads “Get News By E-mail.” Click on that button and it will lead you through the process. We limit our news alerts to one subject per email, keep the alerts to a minimum and archive them for future reference.

As the world becomes increasingly conscious of issues involving the care of our planet, I believe we can share a sense of pride knowing that our efforts have resulted in placing us in a position to pass on a well cared-for treasure, Burntside Lake, to our children and grandchildren.

Enjoy Burntside Lake and all its wonder!



The Burntside Lake Association Board of Directors met on June 2, 2018. From left to right: Pam Freeman, Jeff Rome, Diane Hofstede, Reynold Mack, Celia Domich, Ward Nelson, Rod Nyenhuis, Paul Gustad, Carrie Ohly-Cusack, Eric Webster, Scott Olson, Dave Oliver, and Jim Bastian. Absent was Diedre Plude.

Burntside Lake Association Board of Directors 6/4/2018

President	Ward Nelson ward.t.nelson@gmail.com
Vice President	Reynold Mack reynold.mack@comcast.net
Secretary	Diane Hofstede dianehofstede@bitstream.net
Treasurer	Rod Nyenhuis rodnyenhuis@msn.com
North Arm	Scott Olson Scott.Olson@ymcamn.org
	Jim Bastian Jim.Bastian3390@gmail.com
West End	Celia Domich celiadomich@frontier.com

	Carrie Ohly-Cusack cohlycusack@gmail.com
Island	Eric Webster mayoreric@gmail.com
	Paul Gustad pgustad3992@charter.net
Central	Jeff Rome rome.jeffrey@mayo.edu
	Diedre Plude dwplude@gmail.com
East Arm	David Oliver deoliver@cedar-rapids.net
	Pam Freeman jffreeman@frontiernet.net

Buoys on Burntside Lake

The Sheriff of St. Louis County has the responsibility for buoys on Burntside Lake and we all agree they are critical to boating safety. The Sheriff's Office contracts with a service provider to perform the work of placing the buoys in the Spring and removing them in the Fall. The service provider with the current contract is Timbuktu Marina on Lake Vermilion.

Unfortunately, this Spring buoy placement was delayed. The Burntside Lake Association with primary focus from Reynold Mack lead the effort to resolve the situation. Without his perseverance and the help of our County Commissioner, Tom Rukavina, buoys might still be in piles at various places on the shore. Buoys get damaged and normally 20% of them are scheduled to be replaced each year.

We learned from Undersheriff, David Phillips, that a delay in the rollout of the 2017 Federal Boating equipment grant as administered by the MN DNR led to the delay getting buoys from our supplier. The decision was finally made to place all buoys (damaged or not) and funding from the Sheriff's Office will pay Timbuktu to replace the damaged ones later this summer when the new ones arrive. All buoys were in place by end of day May 31, 2018.

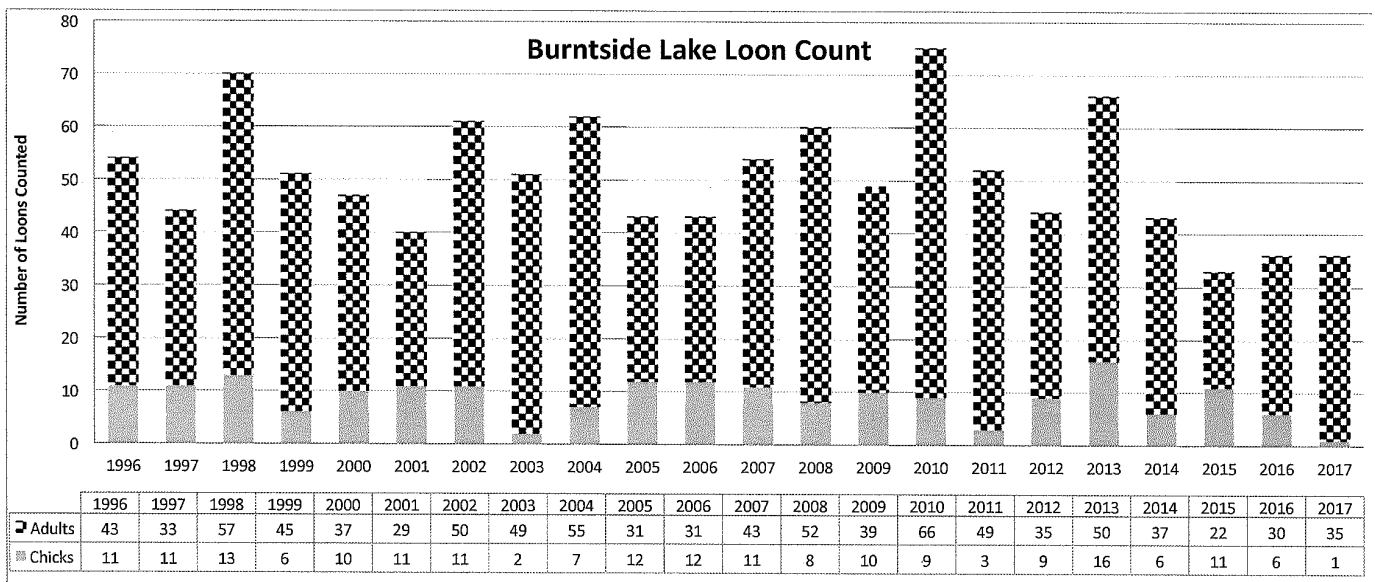
TAKE IMMEDIATE ACTION

If you become aware that a buoy has broken loose or a known hazard needs to be replaced please notify Timbuktu immediately.

Contact: Timbuktu Marina
Dawn Bogdan, Marina Manager
or Matt Cline
Phone: 218-666-2434
<http://www.timbuktumarina.com>

You may also contact Reynold Mack at (651) 295-9877 or contact your area representative on the Burntside Lake Association's Board. We have maps on our computers that can help pin-point the location(s) you are talking about.





During the 1996 annual meeting of the Burntside Property Owners’ Association a new member asked if the number of loons on the lake were increasing or decreasing. After a number of conflicting opinions were rendered, it was suggested that we should count the loons on the lake. The idea met with unanimous enthusiasm and we organized quickly by segmenting the lake into sections. Volunteers were assigned an area of the lake and the teams agreed to rendezvous late in the afternoon to record their results. Since then, we have conducted our annual loon count the afternoon of our annual meeting (the first Saturday in August) under the able leadership of Tim Riley. We now have 22 years of loon count data presented in chart form for your interest.

We also participate in the LoonWatch program sponsored by Northland College in Wisconsin. Google LoonWatch and you will be introduced to an amazing amount of information about the common loon.



Mechanical Brushing

Mat Roderick - CEO
mat@elyconstruction.com

2070 Highway 169
Ely, MN 55731

OFFICE: 218.365.2575
CELL: 218-235.030

www.ElyConstruction.com



1325 E. Sheridan St. Ely, MN
218-365-3665

REAL ESTATE SALES

#4308 - Private Acreage - This 160 acres is one of only a handful of private properties still located within the B.W.C.A. and has been in the family since 1891. **\$275,000**

#4223 - Burnside Lake Lot - +-13 acres of towering pine on the North Arm of Burnside Lake. Spectacular western sunset views overlook +-677' of sandy shoreline. **\$695,000**

www.elywildwoods.com



KLUN LAW FIRM
Direction. Guidance. Results.

- BOUNDARY CONCERNS
- ROAD ACCESS
- EASEMENTS
- LAND USE
- ESTATE & CABIN SUCCESSION PLANNING



1 E. CHAPMAN ST.
ELY, MN 55731
218.365.3221
WWW.KLUNLAW.COM



MOBILE.
COMPUTERS.
SOLUTIONS.

Voltz TECHNOLOGIES

JIM ROBBINS
OWNER/OPERATOR

verizon

Authorized Wireless Retailer

218.365.7783

jim@voltz.com

www.voltz.com



BOAT & EQUIPMENT CENTER
RENTAL • SALES • SERVICE

Highway 169
(1 mi. West of Ely)
Ely, MN 55731

218-365-2700

BOAT SHRINK WRAP, WINTERIZATION, SALES & SERVICE
HONDA MARINE

Did you really come to Ely to do laundry?



A Laundry Room Inc.
Ely, Minnesota

Daily 5am - 10pm • 428 E Sheridan • 218-2358672
Drop off Carharts to Cashmere • Pick Up & Delivery • Seasonal Billing Available • Cabin Linens We clean & store linens for next guest to pick up



North Arm Timber Harvest Update

Logging rights for a popular tract of state forest near the North Arm of Burntside Lake were put up for auction on January 18, 2018 – and nobody bid on them.

The rights for cutting down about a third of the trees on the 57-acre parcel will now get listed at a fixed price of \$14,600.00 said Amy Kerber, a staffer at the Minnesota Department of Natural Resources.

Scott Olson, a member of the Burntside Lake Association Board of Directors and employee of YMCA Camp DuNord, was invited by the DNR to participate on the North Arm Harvest Input Group. News of the auction drew criticism from locals who say the cherished pine trees in Burntside State Forest form the backdrop for popular recreation trails.

State officials ultimately agreed to reduce the size of the parcel they would open up for logging but went ahead with the auction because it's considered to be routine forest management that improves the forest's long-term vitality.

Jimmy Z's Sales



Free estimates
Free Installations
Toll Free (866) NEW DOCK
Office (218) 827-8400
Home: (218) 827-2478
Cell: (218) 343-4278
Fax: (218) 827-2148
Email: zup@frontiernet.net

www.jimmysales.com

• Snowmobile/RTV Trailer • Docks • Boat Lifts



Spirit of the Wilderness

Outfitting Your Needs

Canoe Rentals - Outfitting - Bait & Tackle
Outdoor Gear & Apparel

800-950-2709

2030 East Sheridan St., Ely MN 55731

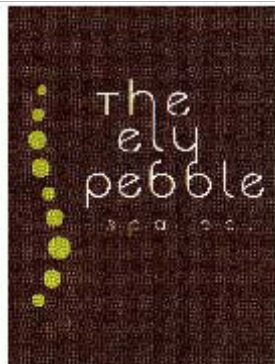
www.elycanoetrips.com



Celebrating over 100 years!

Burntside Lodge

218-365-3894
unique gifts
• fine wines
lakeside dining
• outstanding
cuisine
• large selection of
burntside apparel



ELY | 299 e sheridan ely mn
p | 218 365 0809
VIRGINIA | 105 5th ave. n virginia mn
p | 218 741 5610
e | pebblespaco@gmail.com
w | www.pebblespaco.com

Burntside Lake Ice Out (1940-2018) and Ice On (1987-2017) Dates

Year	Ice Out Date
1940	May 11
1941	April 10
1943	May 2
1944	May 11
1945	April 12
1946	April 24
1947	May 13
1948	April 28
1949	April 28
1950	May 22
1951	May 5
1952	April 29
1953	May 5
1954	May 12
1955	April 21
1956	May 10
1957	May 1
1958	April 21
1960	May 1
1961	May 1
1962	May 6
1963	April 30
1964	April 18
1970	May 5
1971	May 3
1972	May 7
1973	April 27
1974	May 2
1975	April 30
1976	April 19
1977	April 24
1978	May 4
1979	May 12
1980	April 28
1981	April 12
1982	May 4
1983	April 23
1984	April 26
1985	April 26
1986	April 19

Year	Ice Out Date	Ice on Date	Days of Open Water
1987	April 16	December 17	245
1988	April 30	November 20	204
1989	May 6	December 3	211
1990	April 26	December 2	220
1991	April 24	November 26	216
1992	May 6	November 29	207
1993	April 30	November 28	212
1994	May 2	December 10	222
1995	April 30	November 25	209
1996	May 17	November 27	194
1997	May 1	December 8	221
1998	April 17	December 22	249
1999	April 28	December 17	233
2000	April 29	December 9	224
2001	May 1	December 28	241
2002	May 3	November 27	208
2003	May 2	December 3	215
2004	April 30	December 17	231
2005	April 18	December 17	243
2006	April 16	December 7	235
2007	April 28	December 1	217
2008	May 12	December 9	211
2009	May 1	December 14	227
2010	April 3	December 9	250
2011	May 1	December 17	230
2012	March 28	December 10	257
2013	May 19	December 19	214
2014	May 13	November 28	199
2015	April 21	December 25	248
2016	April 24	December 18	238
2017	April 19	December 9	234
2018	May 12		

Earliest Ice Out March 28, 2012

Latest Ice Out May 22, 1950

Median Ice Out April 30

Earliest Ice On November 20, 1988

Latest Ice On December 28, 2001

Median Ice On December 9

Fewest Open Water Days 194

Median Open Water Days 222

Most Open Water Days 257



2017 Inspection and Decontamination Report Summary

During 2017 a total of 2,145 watercraft inspections were performed at public access points on Burntside Lake by inspectors under the management of our partner, North St. Louis Soil and Water Conservation District. In addition, 274 watercraft were decontaminated. These efforts were paid for by a grant from St. Louis County Aquatic Invasive Species prevention funds.

As part of the inspection program boaters are asked where their watercraft had been. 228 watercraft entering Burntside Lake came from lakes known to be infested by Aquatic Invasive Species.

VOLUNTEERS NEEDED TO HELP IN AIS PREVENTION EFFORTS

by Carrie Ohly-Cusack, Chair, BLA AIS Task Force

2018 is the third year of our Aquatic Invasive Species (AIS) Prevention Program on Burntside Lake. St. Louis County has again provided funding to the Burntside Lake Association (BLA) and our partner, North St. Louis Soil and Water Conservation District (NSLSW), to inspect and clean boats entering and leaving Burntside and to raise awareness of AIS issues throughout the Ely area. Our inspectors must pass boat inspection and boat cleaning training certification classes provided by the DNR. In addition, the BLA, in partnership with faculty at Vermilion Community College, provides an extra day of training in communicating with and educating boaters about AIS since they are the front line of our education program. While we are confident our efforts are helping prevent the spread of AIS, we know that we can't check everyone entering or leaving the lake. However, if all of us take the time to pay attention to what is happening in our part of the lake, we may be able to identify new AIS in the lake early and take steps to control or eliminate the outbreak. This is where we need your help.

Our focus in 2018 is to train and develop more volunteer "Sentries" to help monitor AIS across our lake. By each of us keeping our eyes on the condition of our little corners of the lake, we can have a big impact on the prevention of the spread of AIS.

As part of our AIS Prevention Program in 2016, we hired RMB Environmental to survey the littoral areas of the lake (from the shore to areas about 20-25 feet in depth where aquatic plants can grow) to see if they could identify any invasive plants in Burntside and to give us an idea of what native plants are growing here. In 2017, we asked RMB to re-survey a number of potential "hot spots," areas around the boat land-



VOLUNTEERS NEEDED TO HELP IN AIS PREVENTION EFFORTS

Continued from Page 8

ings where AIS are most likely to be introduced. The good news is that no aquatic invasive plant species were found. This summer, we have hired and will train two VCC Water Resource students to inspect these “hot spots” throughout the summer.

We can cover even more of the lake by each of us as homeowners keeping an eye on the parts of the lake we know best: around each of our properties. We are offering half-day training sessions to all interested people on Burntside to learn how to be a lake “Sentry.” The Sentry program was developed by the St. Louis River Alliance and Sea Grant and is designed to train people in identifying AIS that may appear in the areas of the lake they know best: around their properties. If you see something unusual, we have a process for confirming your finding and reporting it to the DNR for immediate action. The faster we identify an infestation, the quicker we can respond to keep it localized or to eliminate it. By becoming a volunteer Aquatic Invasive Species Sentry, participants will learn:

- how to identify AIS along with native species
- the impact of AIS
- how they spread
- early detection, survey and reporting methods

There was a training session on Burntside at Camp Du Nord on June 14th and there will be another on July 7 from 9:30 am to noon at 3173 Van Vac Road.

Mike's Liquor Store

The most complete wine selection in northern Minnesota

Beer, Microbrews, Liquors, Premium Cigars

8:00 AM - 10:00 PM Monday - Saturday 365-5087

Mark & Dottie Zojonc

PLEASE SUPPORT OUR ADVERTISERS

NORSHOR AGENCY INC.
 DEB CAMPBELL
 AGENT
YOUR INSURANCE STORE
 628 E. Sheridan St.
 Ely MN 55731
 Phone: 218-365-4665
 Fax: 218-365-2688
 debcamp63@msn.com • License No. 20014480



zUP NORTH REALTY
 Andrea Zupancich
 Broker/REALTOR®

218.749.0159 Ce
 andrea@zupnorth.com

21 Commerce Road • Babbitt, MN 55706
 218.827.3773 Fx • 877-967-2288 Tf

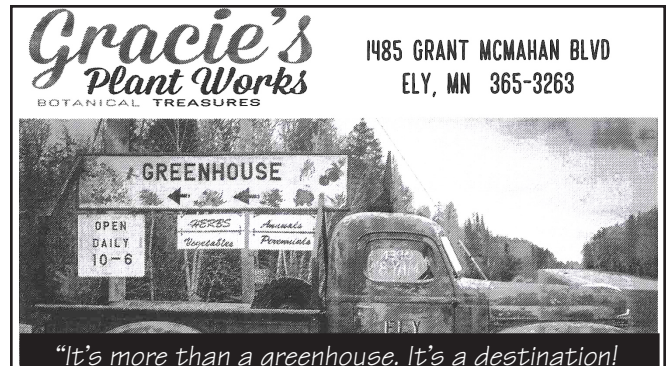
zUpNorth.com



THE ELY ECHO
The Voice of the North Country
 Locally Owned, Legal Weekly Newspaper
 Caring about Ely and its environs since 1972
New subscribers welcomed, all subscribers cherished
 Office at 15 East Chapman • 218-365-3141
 Printing • Design • Fax • Copies

Gracie's Plant Works
 BOTANICAL TREASURES

1485 GRANT MCMAHAN BLVD
 ELY, MN 365-3263



"It's more than a greenhouse. It's a destination!"

the YMCA

FEST DU NORD
 3-7 each day
 September 1 & 2, 2018



Join us for two afternoons of music at YMCA Camp du Nord on beautiful Burntside Lake in Ely, MN. Bring a lawn chair or blanket for seating, and a picnic. Concessions, beer and merchandise for sale. This year's lineup includes Jeremy Messerschmidt, HALEY, Okee Dokee Brothers, John Munson, Matt Wilson, Lucy Michelle, Roe Family Singers, Ben Weaver and more.

Visit dunord.org for performance details. Tickets are available at brownpapertickets.com or at the door.

CAMP VAN VAC
 A LAKESIDE RESORT
Sauna * Fishing * Campfire * Canoe
 Romantic log and stone housekeeping cabins on Burntside Lake. Summer rates from \$550 - \$1650 a week. Spring and fall discounts.
Fun * Boats * Blueberries * Serenity
 218-365-3782 www.campvanvac.com

Steven Renneberg
Kris Winkelman
 Owners

1810 E. Sheridan Street
 Ely, MN 55731
 218-365-5358
 ArrowheadOutdoorsElyMN@gmail.com

ARROWHEAD OUTDOORS
 BAIT TACKLE HUNT CAMP
 Ely, Minn.

 ArrowheadOutdoorsElyMN.com

What are we doing to protect Burntside Lake from Aquatic Invasive Species. The AIS Detector Program

by Reynold Mack

As you know our lake association has been busy protecting Burntside Lake from new Aquatic Invasive Species. You have seen the inspectors on the landings and the decontamination units to help clean your watercraft prior to launching it or moving to another water body after leaving Burntside Lake. This is an important part of our program but it isn't 100% effective, because we can't be everywhere all the time. We are training people to be part of our Sentry Program and along with that program we have AIS Detectors. These people have taken additional courses to be more knowledgeable in evaluating plants and animals to see if they are an invasive species or something that is natural to the area. The AIS Detectors have an App on their phones so if there is a question as to if a species is an invasive, the detectors can enter EDDMapS and fill out the report which goes directly to the MNDNR and the Minnesota Aquatic Invasive Species Research Center {MAISRC}. The AIS Detectors are not allowed to make a confirmation of an AIS finding in the field, that is left up to following the procedure in the evaluation process. The Detectors can tell you if it is a known native species {if we know}. The best part of this program is that you will be able to interact with the Detectors and maybe we will all learn something new.

This is the write up of the Detector Program, from MAISRC. As the threat of AIS continues to grow across Minnesota, there is a need for an organized statewide surveillance network of trained volunteers eager to make a difference. In partnership with University of Minnesota Extension, that need is being filled with the AIS Detectors program. This program provides participants with high-quality training, developed and reviewed by AIS experts. Participants learn principles of basic aquatic ecology, AIS identification, impacts, and biology, Minnesota rules and regulations, preventing the spread of AIS, and reporting. Upon completing the training, participants are equipped to volunteer around the state and make a difference in the areas of citizen science, outreach and education, stewardship, and support of AIS programs.

To become an AIS Detector, participants first take an online course that consists of six units including species identification, the steps you'll take if you find a new AIS infestation, and more. These units can be done on your own time from home, at a public library, or anywhere else with access to the internet. The online course takes a total of about 6 to 8 hours to complete; and can be broken up as your schedule allows as the full online course does not need to be completed in one sitting.

The next step is to complete an in-person, full day workshop led by Extension staff where you'll apply the knowledge and skills that you learned in the online course. There are in-person workshops held throughout the state -- you'll choose which one you want to attend when you register for the program.

Both the online course and the in-person workshop include open book exams, on which you must score 70% or higher to be certified as an AIS Detector and be eligible to participate as a volunteer.

Once certified, Detectors must complete 25 hours of volunteer service and 8 hours of advanced or refresher training each year to maintain their certification.

For reference this is MAISRC web site: <https://www.maisrc.umn.edu/ais-detector>

Reynold Mack (651) 295-9877 or cabin phone (218) 365-3331, e-mail address: reynold.mack@comcast.net is our Trained AIS Detector for Burntside Lake, the backup AIS Detector is Emily Nelson from North St. Louis Soil and Water Conservation District. Her number is (218) 471-7285, e-mail: emily@nslswcd.org. Emily is our supervisor and coordinator of on AIS Inspectors for both Burntside Lake and Lake Vermilion. We are hoping that you will get involved with our Sentry Program that is a preliminary training

Continued on Page 12

What are we doing to protect Burntside Lake from Aquatic Invasive Species. The AIS Detector Program

Continued from Page 11

into AIS and an early detector system to alert our AIS Task Force that you may have seen something that you do not recognize as a native plant, or just have a question if you are unsure. With the AIS Detector Program you should get a fairly quick response to your concern rather than wait on someone from the Department of Natural Resources to provide you with information. Remember we are all in this together, so get your feet or arms wet and see what you can find.

Burntside Lake Association Donations

The Board of Directors of the Burntside Lake Association voted at their Fall 2017 Board Meeting to contribute \$1,400.00 to organizations who positively contribute to the quality of life on Burntside Lake and the community at large. The following organizations received \$200.00 each: Minnesota Lakes and Rivers Advocates, Ely Igloo Club, St. Louis County Rescue Squad, Morse, Fall Lake 1st Responders, Ely Bloomenson Community Hospital, Ely Public Library and the ISD 696 School District.

BURNTSIDE Water Level Data

Period of record: 09/13/1939 to 10/11/2017

of readings: 864

Ordinary High Water Level elevation: 1371.9 ft

Highest recorded: 1374.83 ft (09/29/1948)

Lowest recorded: 1370.07 ft (10/26/1997)

Recorded range: 4.76 ft

Last reading: 1371.35 ft (10/11/2017)



**STEGER MUKLUKS
& MOCCASINS**
MADE IN ELY, MN

33 East Sheridan Street, Ely
Open Daily 9 a.m. www.mukluks.com
Have a great summer! - Patti

Landscaping Sand & Gravel Rooter Service

Walsh Sewer & Septic Systems Co.
Installation, Insulation, Septic Tank Pumping
Road Repair Service • Back Hoe & Dozer Work

Free Estimates
Sewer Line Video Camera
Jetter Service

218-365-4041 • 218-343-1231 **JIM WALSH**
Licensed • Bonded • Insured P.O. Box 68
Lic # 1586 13964 Lauder Blvd
Plumbing Needs Winton, MN 55796



**Gerzin's
WOOD WIZARDS**
Custom Builders

www.elywoodwizardsllc.com **365-5311** Lic#20270430

**HEARTH SIDE
CORNER**



Mark & Donna Blanchfield
218-365-5013
Fax 365-5028

www.hearthsidecorner.com
hearthsidecorner@citlink.net
1203 E. Sheridan St., Ely

Showroom Hours:
Mon - Fri 10 am - 5 pm
Sat 10-2 pm

Your Full Service Fireplace Shop
• Free Estimates • Friendly Service



from here to there...

218.349.1383
elyshuttle@gmail.com

SERVICES:

Airport pick up & drop off
(Ely, Hibbing, Duluth)
BWCA Entry Points
Shuttle Service
COMMERCIALY INSURED

WARREN JOHNSON EXCAVATING

1003 South 2nd Avenue East
Ely, Minnesota 55731

Home & Fax: (218) 365-6360

Cell: (218) 343-6397

Email: wdjsolutions@frontiernet.net



• For All Your Gravel Needs

- Licensed Septic Design & Installation
- Complete Site & Building Preparation
- Complete Septic System Maintenance

From Start to Finish

MN Lic. #2407

Hang with your friends at

Kess Gallery

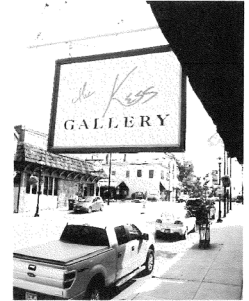
Great Jewelry

Original Art

Fine Craft

Custom Framing

130 E Sheridan St Ely, MN
Open Daily 365-5066



Joe's Marine & Repair, Inc.

EVINRUDE • LUND * STIHL

25 West Chapman St., Ely MN 55731
(218)365-6264

1230 E Sheridan St, Ely



365-3216

Groceries

- Meats • Deli
- Bakery
- Homemade Sausage
- Broasted Chicken

Commercial

Residential

Industrial

Call us for all

your electrical needs!

Tim & Monica Cunningham - Master Electricians

13445 Villa Rd., Ely, MN 55731

(218) 365-6301

Licensed • Bonded • Insured

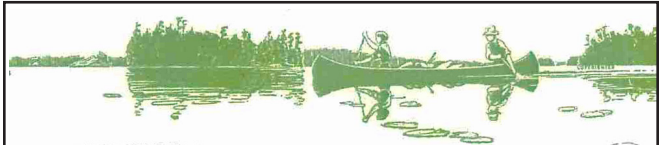


Sunrise

Cabin Care & Construction

- New Construction • Renovations and Remodels
 - Custom Woodworking • Finish Carpentry
- Specializing in remote access sites
Drew Shock (218) 365-2147 Ely MN
Experienced • Licensed • Insured

License # BC497400



BOB OLSON

Canoe Country Outfitters, Inc.

629 E. SHERIDAN STREET • BOX 30 • ELY, MINNESOTA 55731
www.canoeconomyoutfitters.com • e-mail: cco@frontiernet.net
• Phone: (218) 365-4046 • 800-752-2306 • Fax: (218) 365-4046

CANOE TRIPS INTO THE QUETICO - BWCA WILDERNESS

The HiLo Project Area

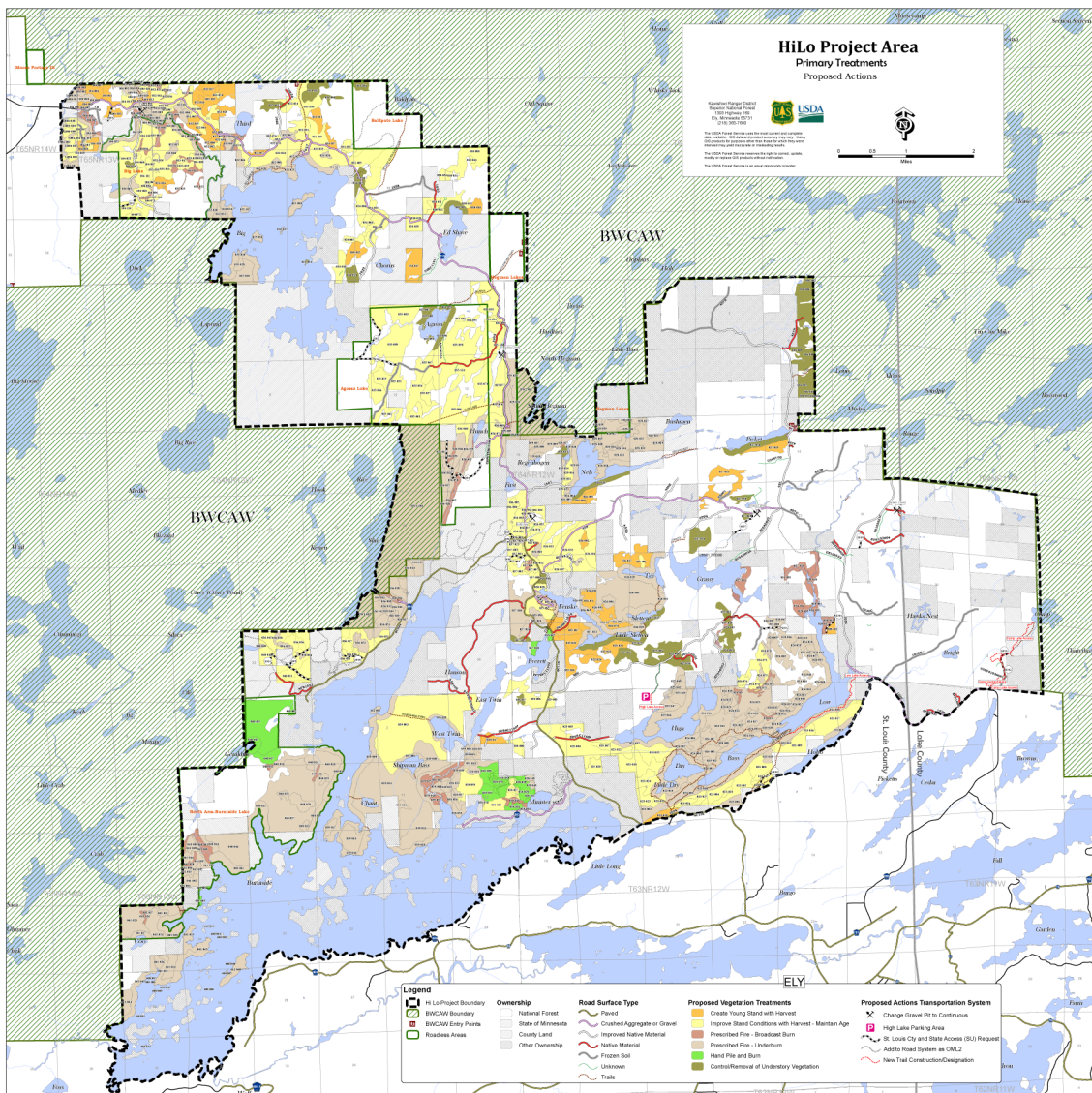
The watershed of Burntside Lake is a forested area with numerous property owners, the biggest of which is the USA. The USFS is asked to provide stewardship over the timber, mineral, and other resources in the Superior National Forest on USA lands, along with maintaining the recreational, wildlife, and other values and resources. The MN DNR has a similar mission for state lands and waters, including the Burntside State Forest.

We as private landowners are also called to stewardship to our property which in turn impacts the lake. The Forest Service has designated an area that begins from the south shore of Burntside Lake and Hobo Lake then extends north up both sides of the Echo Trail past Big Lake to the edges of the BWCAW. This area is called the HiLo Project Area and includes all of Burntside Lake and much of its watershed.

See map of designated area: https://www.fs.usda.gov/nfs/11558/www/nepa/101921_FSPLT3_3866537.pdf

The HiLo Project is a management plan for this area of the SNF that is already in action and will continue taking place over the next 10-15 years. It involves timber management which includes timber harvesting, prescribed burning, road building, and trail construction.

To learn more, please go to the following website: <https://www.fs.usda.gov/project/?project=47208>





LAKE SHORE LIQUOR

438 E Sheridan Street • Ely • 218-235-4011

NATE'S BARGING SERVICE

Remote site / Island Barging

DELIVERY

REMOVAL OF LARGE ITEMS

**SEPTIC PUMPING & MAINTENANCE
OUTHOUSE PUMPING & MAINTENANCE**

**NATE BJORK
218.404.6296**



303 E Sheridan St., Ely

365-3188

www.zups.com

FOOD MARKETS

**MEATS, GROCERIES,
HOT & COLD DELI &
HOMEMADE SAUSAGES**



*Fresh Baked
Bread, Buns,*

Scones &

Pastries

(218)365-2802

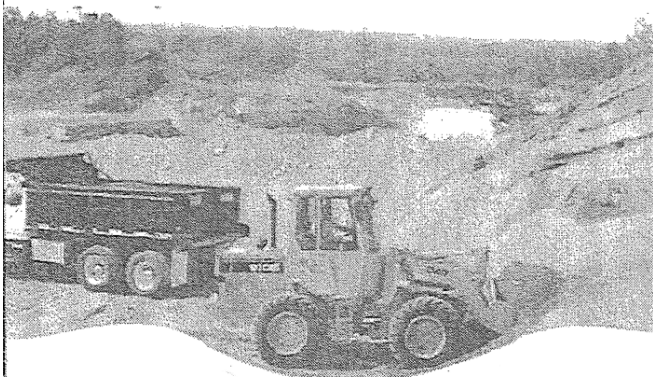
*Call to reserve your
cake orders!*

402 E. Sheridan St.
Ely MN 55731

The Earth Moves with

TISOVICH EXCAVATING

Serving the Ely, Babbitt, Tower and Lake Vermilion area



*Quality Workmanship
Residential & Commercial
Complete Site Development*

*Free Estimates
No Job Too Small*

Contact Us For 2nd Quotes

*Digging • Dozing • Trucking • Rock Drilling & Blasting • Landscaping
• Septic Systems • Demolitions • Block Retaining Walls • Sand & Gravel*

1004 East Harvey Street • PO Box 276 * Ely MN 55731

Phone & Fax 218-365-6620 email: info@tisovich.com

Visit our large website www.tisovich.com



**Property Management
Lakeshore Vacation Rentals
Cabin Repairs & Maintenance**

www.elylodging.com

(218) 365-4956

1323 E. Sheridan Street

Ely, MN 55731

John Swenson, Broker

Please Plan to attend the Burntside Lake Association

2018 ANNUAL MEETING

Saturday, August 1, 2018

Vermilion Community College Auditorium

8:30 am Refreshments and social time

9:30 am Meeting begins

TOPIC: What is happening with Aquatic Invasive Species?

Featured Speakers:

Jeff Luvgren - AIS Program Coordinator, Vermilion Lake Association

Emily Nelson - North St Louis Soil & water Conservation District

