



2019 ANNUAL MEEETING
<p>Saturday, August 3, 2019 Vermillion Community College Auditorium 8:30 am Refreshments and Social Time 9:30 am Meeting Begins Featured Speaker: Douglas “Gus” Smith District Ranger Superior National Forest Topic: HiLo Project – Overview & Update</p>

From the President by Ward T. Nelson

This 2019 Newsletter is being printed and mailed to everyone on our inclusive mailing list. It will also be available on our web site: www.burntside.org. Most everyone on our list is a “property owner” on Burntside Lake. Just who is a property owner on our lake is becoming complicated. While St. Louis County sends a tax bill to just one person per parcel we know that many properties on the lake have been placed into some form of trust, partnership, or limited corporation involving extended family members. Therefore, the “owner” of the property can often be an extended list of folks who have a vested interest and love of Burntside Lake. We want all who consider themselves “owners” to receive this Newsletter and become members of the Burntside Lake Association. I am delighted to report that our improved Spring Membership mailing almost doubled our paying membership. It is an absolute privilege to become a member of the Burntside Lake Association for an annual amount of only \$20.00.

We are all bound together by a very special shared resource – property owners around this lake are in a unique relationship, privileged to be stewards of this magnificent creation of nature. While we are all connected, we respect privacy and realize that anybody can ruin the experience for the rest of us. By becoming a member you support a group of dedicated volunteers who are focused on our purpose with no hidden political agenda. **Our purpose is to enhance, promote and protect the interest of property owners on Burntside Lake and the immediate watershed thereof; to pro-**

tect the environment thereof; and to contribute to the recreational, social and civic welfare of the community.

Because we are an organized Lake Association in Minnesota we have been able to be influential in:

- Aquatic Invasive Species – Task Force obtained over \$250,000 for awareness, inspections, decontamination, education, and monitoring
- Pollution control – monitor water clarity – educate on sewage treatment rules
- Safety – ensure buoy placement, convey swim platform rules
- Measurements – loon count, water level, ice on – ice out dates
- Irritant awareness – noise, bright lights, jet ski laws
- Communication – mailing list, newsletter, internet web site, email alerts
- Firewise – education and awareness

Please plan to attend our Annual Meeting on August 3, 2019 at the Vermillion Community College Auditorium. Refreshments are at 8:30 am, meeting at 9:30 am. Our featured speaker will be Douglas “Gus” Smith, District Ranger, Superior National Forest who will discuss the comprehensive HiLo Project which will be implemented around our lake and beyond over the next 5 to 10 years.

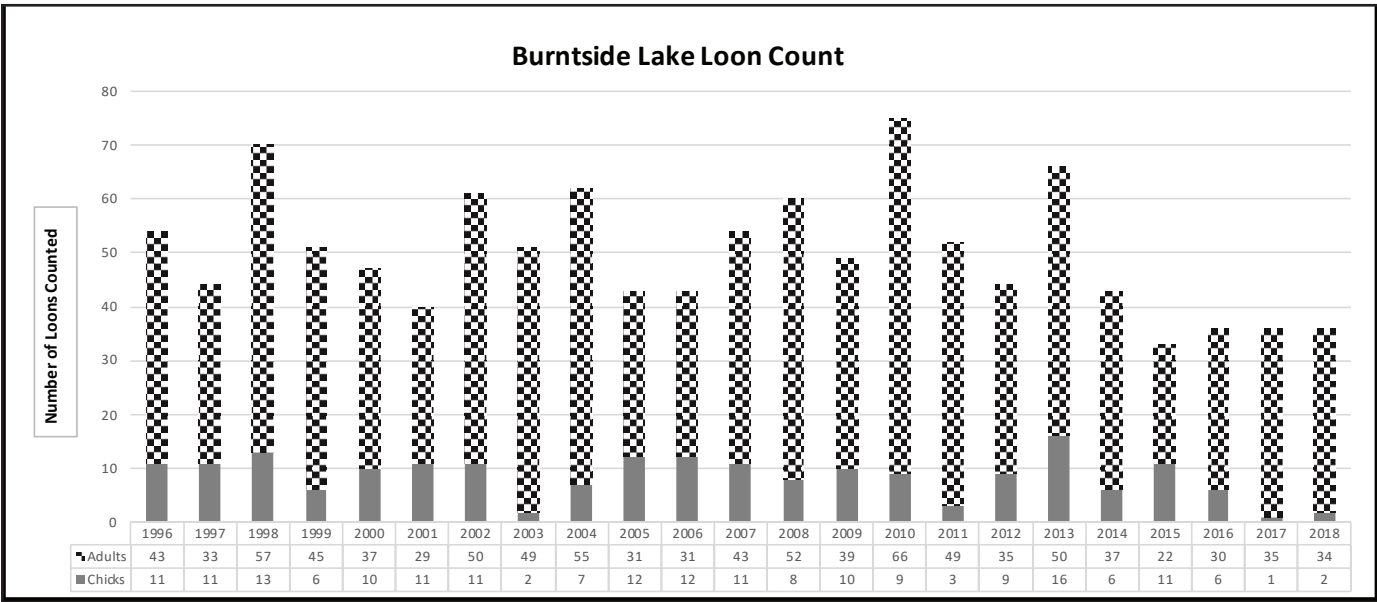
Hopefully, you find the information in this Newsletter interesting. Please patronize our advertisers who help defray the cost of this publication.

Enjoy Burntside Lake and all its wonder!



Loon Count on Burntside Lake

BOB
CARY



During the 1996 Annual Meeting of the Burntside Property Owners' Association a new member asked if the number of loons on the lake was increasing or decreasing. After a number of conflicting opinions were rendered, it was suggested that we should count the loons on the lake. The idea met with unanimous enthusiasm and we organized quickly by segmenting the lake into sections. Volunteers were assigned an area of the lake and the teams agreed to rendezvous late in the afternoon to record their results. Since then, we have conducted our annual loon count the afternoon of our annual meeting (the first Saturday in August). We now have 23 years of loon count data presented in chart form for your interest.

We also participate in the LoonWatch program sponsored by Northland College in Wisconsin. Google 'LoonWatch' and you will be introduced to an amazing amount of information about the common loon.

Lure of the Loon

By Sherry Abts

Reprinted from the 2019 Ely Summer Times

Permission granted by Raven Words Press

As I paddled in the misty early morning on a glass-smooth lake, I should have been more peaceful. Instead I felt frustration with the over-abundance of boats, docks, and cabins on this tiny lake. I know there was little undisturbed habitat here and only one small back bay where loons had nested in recent years. My heart grew heavy with the thought that in my ten years of visiting this lake, this might be the first year in which no loon chicks were successfully raised. When I'd paddled about half of the shoreline the mist began to dissipate. Then I heard it. Yes, the tremolo call of a loon. Two adults were flying just above my kayak. The second loon was calling while the first loon was...what? It had a fish in its bill! That could only mean one thing – these loons had to be the territorial pair for this spot. And a loon would never carry a fish in its bill unless it had a chick to feed. The two landed near a dock. An eight-week old gray-colored healthy looking chick came out from under the dock to get the fish. The good news is that some loons are amazing in their ability to adapt. This pair of loons had learned to hide their chick under a dock while they were fishing

at a nearby lake. The bad news – it takes way too much energy to raise and protect a chick on one lake while having to fly to other lakes to find food.

The lake was obviously depleted of a healthy fish population. Loons are a bio-indicator, or sentinel species, of a healthy lake system. For a loon family to survive, the water must be clear because they hunt by sight. Also the lake must have a healthy food web with plenty of macro-invertebrates and a diversity of fish species of all sizes. If you see adults or chicks always eating minnow-size fish or crayfish, they are not receiving the nutrients they require. But if you see loons successfully raising chicks year after year, you know the lake is a healthy ecosystem.

The loons return to Ely area lakes as the ice begins to come off. They stage on open waterways south of us awaiting ice-out. The most experienced and strongest males come first and get the best territory, staking their claim to a lake even before the ice is completely gone. Young loons don't return to their birthplace until their third year. In summer they travel up the Atlantic coast and return to the Gulf in winter. They are not skilled enough or strong enough to defend a territory and raise chicks until almost six years of age.

It's likely you'll hear loons even before you see them. In early spring, loons use four distinct vocalizations as they return to claim their territory and court their mates. Only the male does the wild yodel, which informs neighbors of his big body size, his identity, and his willingness to take on all competitors. The first part of the yodel is that individual male's signature. This may sound alike to human ears, but loons recognize the identity of the yodeler.

Continued on page 4

**NATE'S
BARGING SERVICE**

Remote site / Island Barging

DELIVERY

REMOVAL OF LARGE ITEMS

SEPTIC PUMPING & MAINTENANCE

OUTHOUSE PUMPING & MAINTENANCE

NATE BJORK

218.404.6296



Joe's Marine & Repair, Inc.

EVINRUDE • LUND * STIHL

25 West Chapman St., Ely MN 55731

(218)365-6264

Lure of the Loon

Continued from page 3

Researchers can also identify the differences when they record the call and slow it down. The yodeling part of the call that rises in pitch, then lowers and rises again and again between three and seven times, indicates just how possessive that male regards the lake he is calling from. More yodels indicate a stronger territorial commitment and an increased willingness to fight off any other loon that might be hopeful of mating and nesting there.

The other vocalizations are made by both genders. The tremolo, which sounds like a rapid trill, can be a flight call – “Can I land here?” or a warning call – “There’s danger!” Often when you hear the tremolo you will see an eagle nearby or perhaps an intruding loon or boat. The wail is a contact call of one to three notes, long and smooth and occasionally mistaken for a wolf howl by those unfamiliar with north woods critters. It is used to contact other loons – “I am here: where are you?” When a loon is incubating an egg and is ready to trade places with its mate the wail might mean “Your turn with the kid. I’m hungry.” On a calm night if there is no wind or rain you can hear yodels, tremolos, and wails up to 19 miles away. The fourth vocalization is a soft hoot used between partners, parents and chicks, or between member of a social group. The hoot is a comforting, friendly short call to stay in touch.

Early each spring, May in the Ely area, males fight males for territory and females fight females. The winner of each fight accepts the winner of the other fight. Males may fight to the death, whereas the female loser may just swim off and take up with a younger or less desirable male in another territory. Researchers studying these patterns believe loons are more married to their lake than to a specific mate.

Once territories are settled, the male and female, now as partners, will rest, refuel from the long migration, and renew their bond. There is no mating dance like some birds. (What may look like a dance is probably a fight.) Only soft hoots and mews, synchronized bill dipping, circle swimming, and foraging close together for a couple weeks marks the couple’s courtship. Next a decision about the nesting site ensues. It must be inches from the shoreline, because loons cannot walk on land. Unfortunately, this can create a problem with flooded nests due to storms, boat wakes, and water level changes. After quick copulation on the nesting site, the pair will build a sloppy nest using vegetation from the bottom of the lake. The female will lay the egg and a second egg might be laid twenty-four hours later. By June 1st, both parents share equally in the job of incubating eggs. Researchers found that females tend to sit on the nest more during nighttime hours. The adults guard and incubate the eggs for 27-30 days. This is the only time loons are on land.

By early July, if nesting is successful, the first chick hatches. If there was a second egg it will hatch 24 hours later. The adults know if an egg is fertile and about to hatch or if it is not. If any eggs are not fertile, the parents will abandon the nest and eggs. Parents often bring the newly-hatched chicks to a “nursery area” of the lake – one with plentiful, small fish. Chicks ride on either parents’ back for three reasons: safety from predators, warmth, and conservation of energy. Chicks stop riding on the adults’ backs when they are three weeks old. To gain enough weight and strength to be independent by the time they are two to three months old, chicks need to eat often. Can you imagine feeding a chick more than 100 times in four hours? This is not uncommon. As the chicks become more independent, adults will hide the

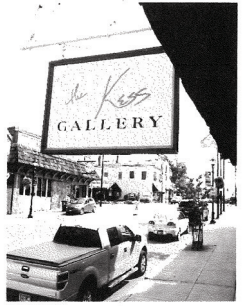
Continued on page 5

1230 E Sheridan St, Ely



365-3216
Groceries
• Meats • Deli
• Bakery
• Homemade Sausage
• Broasted Chicken

Hang with your friends at
Kess Gallery
Great Jewelry
Original Art
Fine Craft
Custom Framing



130 E Sheridan St Ely, MN
Open Daily 365-5066

Lure of the Loon

Continued from page 4

chicks near lily pads or fallen trees along the shore so that the adults can socialize. Chicks grow fast, doubling their weight often. If there is not enough food, then only one chick might survive. Adults feed whichever chick is most aggressive.

Once on Boot Lake in late July, I observed a loon family with two juveniles. One was already very independent and foraging on its own. The other, perhaps only one day younger, was staying close to a parent and begging for food. The adult dove and caught a fish and presented it to the begging juvenile, but the fish got away. This happened several times as the adult kept diving to retrieve the fish. Finally, both the juvenile and the adult dove under the water. Hooray! The chick returned to the surface with a fish in its bill. Success after all!

During September, juveniles become more and more independent, with adults leaving them unattended more often. During this time, juveniles practice more fishing and foraging on their own and also attempt their first flights, facing into the wind for take-off. Adult loons leave for migration by the first week of October or sooner, with the males once again in the lead. Juveniles stay another month or two feeding without competition from the adults, then find other juveniles to migrate with. They will migrate in small groups before ice is on the lakes, although occasionally a young loon waits too long and gets trapped by ice. Juveniles have to migrate without the assistance of GPS or map and compass. How they find their way to the Gulf of Mexico is one of many loon mysteries. We need more research.

You may see large rafts of loons during spring and fall migration months. These groups are usually a loosely organized social or migrating flock. Are those loons friends or related family member? Are they all males, females, mixed? Are

they young, old, or mixed ages? More research is needed for an answer. Rafts of loons during the breeding months are usually birds age three to six that have not yet acquired a breeding lake as their territory, or older birds age fifteen and up that have been kicked off their breeding territory by a younger stronger loon.

Loons have solid, heavy bones unlike the hollow bones of most birds. This contributes to their low wing load, meaning the surface area and size of their wings barely supports their heavy weight. They need a quarter-mile of runway to successfully take off. Flying is a challenge. The longest migration ever recorded for a loon was 650 miles at 73 mph for 8 hours non-stop with a tail wind. They have to constantly flap, even during long migrations, unable to rest by gliding or soaring.

Loons can walk on water but not on land. Their body structure is an ancient design, perfect for swimming and diving with accuracy and agility. They don't use their wings to propel them underwater, only their three-toed feet, which collapse to a streamlined shape. Their legs are near their tail area, not in the middle of their body, which also helps with swim speed. Researchers have found that loons can dive 200 feet deep, move through the water up to six miles an hour and stay under for five minutes.

There are many threats to loon survival including boat collisions, flooded nests, fishing line, lead tackle, botulism (due to invasive species), mercury poisoning, oil spills, and shoreline destruction. If a chick is hit by a boat, the adult loons will abandon the chick, and its only chance is to be rescued and brought to a wildlife rehab facility. Nests can be flooded by a boat wake then abandoned by the adults. Loons often get tangled in fishing line, then starve to death. One ingested lead jig or sinker will kill a loon in a few days. As a top predator, loons' bodies accumulate mercury from air and water pollution, which diminishes their reproduc-

Continued on page 6



LAKESHORE LIQUOR

438 E Sheridan Street • Ely • 218-235-4011

Continued from page 5

tive success and general health. The loons in the Ely area have been impacted by the Deepwater Horizon oil spill in the Gulf of Mexico nine years ago. Can you make a difference? Yes! Change to non-lead fishing tack and be careful to dispose of all used fishing line properly. Stay 200 feet or more away from loons, especially when they are nesting or have chicks. When humans disturb loons, they might abandon their nests and chicks. Remember that you might be on vacation, but loons are not. They have to work hard to forage for food, feed and protect their chicks, defend their territory from other loons, preen their feathers, and sleep on the water. If they change their behavior in response to your presence, then you have interfered with their daily routine, which is critical to their survival. You can help the local “Loon Rangers” by being a good observer. Take notice and report any unusual loon behavior, like the cabin owner on the north side of Shagawa who noticed an injured adult loon hiding under docks and making a “mew” sound. It had fishing line wrapped around its bill and could not eat. The DNR sent out a capture team that untangled the loon, and its mate immediately joined the freed bird. They vocalized and began foraging together.

Help with local surveys or collect data on your favorite lake. Members of Ely Field Naturalists collected data on more than 38 lakes during the summer of 2018. 25 of those lakes had at least one chick survive for eight weeks. 13 lakes had an unsuccessful reproductive year. The Minnesota DNR ended their Loon Watcher surveys in early 2019, due to lack of funding. But local Elyites are continuing to provide observation data. If you wish to participate in an informal local survey or report unusual loon behavior contact Sherry Abts at birdingabts@gmail.com.

Learn More About Loons:

The Common Loon, MacIntyre
Journey with the Loon, Dr. David Evers and Kate Taylor
Fascinating Loons, Tekala
www.briloon.org
www.northland.edu/loonwatch

Burntside Lake Association Board of Directors - June 2019

President	Ward Nelson ward.t.nelson@gmail.com
Vice President	Rod Nyenhuis rodnyenhuis@msn.com
Secretary	Diane Hofstede dianehofstede@bitstream.net
Treasurer	Reynold Mack reynold.mack@comcast.net
North Arm	Scott Olson Scott.Olson@ymcamn.org
	Jim Bastian Jim.Bastian3390@gmail.com
West End	Celia Domich celiadomich@frontier.com

West End	Carrie Ohly-Cusack cohlycusack@gmail.com
Island	Eric Webster mayoreric@gmail.com
	Paul Gustad pgustad3992@charter.net
Central	Jeff Rome rome.jeffrey@mayo.edu
	Diedre Plude dwplude@gmail.com
East Arm	David Oliver deoliver@cedar-rapids.net
	Pam Freeman iffreeman@frontiernet.net

Buoys on Burntside Lake

The Sheriff of St. Louis County has the responsibility for buoys on Burntside Lake and we all agree they are critical to boating safety. The Sheriff's Office contracts with a service provider to perform the work of placing the buoys in the Spring and removing them in the Fall. The service provider with the current contract is Timbuktu Marina on Lake Vermilion.

We thank Timbuktu Marina for placing the buoys in 2019 very quickly after ice out.

TAKE IMMEDIATE ACTION

If you become aware that a buoy has broken loose or a known hazard needs to be replaced please notify Timbuktu immediately.

Contact: Timbuktu Marina
Dawn Bogdan, Marina Manager
or Matt Cline
Phone: 218-666-2434
<http://www.timbuktumarina.com>

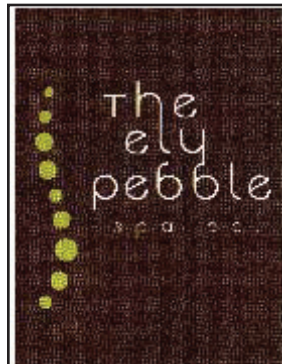
You may also contact Reynold Mack at (651) 295-9877 or contact your area representative on the Burntside Lake Association.



Burntside Lodge
Est. 1913

(218) 365-3894

- Unique gifts
- Fine wines
- Outstanding cuisine
- Large selection of Burntside apparel



ELY | 299 e sheridan ely mn
p | 218 365 0809
VIRGINIA | 105 5th ave. n virginia mn
p | 218 741 5610
e | pebblespaco@gmail.com
w | www.pebblespaco.com



2018 Inspection and Decontamination Report Summary

During 2018 a total of 2,402 watercraft inspections were performed at public access points on Burntside Lake by inspectors under the management of our partner, North St. Louis Soil and Water Conservation District. This was an increase of 257 from 2017. In addition, 127 watercraft were decontaminated, a decrease of 147 from 2017. These efforts were paid for by a grant from St. Louis County Aquatic Invasive Species prevention funds.

As part of the inspection program boaters are asked where their watercraft had been. 104 watercraft entering Burntside Lake came from lakes known to be infested by Aquatic Invasive Species.

VOLUNTEERS NEEDED TO HELP IN AIS PREVENTION EFFORTS

by Carrie Ohly-Cusack, Chair, BLA AIS Task Force

2019 is the fourth year of our Aquatic Invasive Species (AIS) Prevention Program on Burntside Lake. St. Louis County has again provided funding to the Burntside Lake Association (BLA) and our partner, North St. Louis Soil and Water Conservation District (NSLSW). NSLSW is responsible for the management of boat inspections and decontamination of boats entering and leaving Burntside Lake. The Burntside Lake Association (BLA) continues to raise AIS awareness throughout the Ely area, monitors Burntside Lake for existing and new invasive species through a paid/volunteer Sentry Program and partners with neighboring lake associations and counties to continue to build a cost effective AIS program. Our inspectors must pass boat inspection and boat decontamination training certification classes provided by the DNR. In addition, the BLA, in partnership with faculty at Vermilion Community College, provides an extra day of training in communicating with and educating boaters about AIS since they are the front line of our education program. While we are confident our efforts are helping prevent the spread of AIS, we know that we can't check everyone entering or leaving the lake. However, if all of us take the time to pay attention to what is happen-

ing in our part of the lake, we may be able to identify new AIS in the lake early and take steps to control or eliminate the outbreak. **This is where we need your help.**

In 2019 we again will focus on training and developing more volunteer "Sentries" to help monitor AIS across our lake. By each of us keeping our eyes on the condition of our little corners of the lake, we can have a big impact on the prevention of the spread of AIS.

As part of our AIS Prevention Program in 2016, we hired RMB Environmental to survey the littoral areas of the lake (from the shore to areas about 20-25 feet in depth where aquatic plants can grow) to see if they could identify any invasive plants in Burntside and to give us an idea of what native plants are growing here. In 2017/2018, we asked RMB to re-survey a number of potential "hot spots," areas around the boat landings where AIS are most likely to be introduced. The good news is that no aquatic invasive plant species were found. For the second year, we have hired and trained two VCC Water Resource students (paid sentries) to inspect these "hot spots" throughout the summer.

Continued on page 9



VOLUNTEERS NEEDED TO HELP IN AIS PREVENTION EFFORTS

Continued from Page 8

We can cover even more of the lake by each of us as homeowners keeping an eye on the parts of the lake we know best: around each of our properties. We are offering half-day training sessions to all interested people on Burntside to learn how to be a lake "Sentry." The Sentry Program was developed by the St. Louis River Alliance and Sea Grant and is designed to train people in identifying AIS that may appear in the areas of the lake they know best: around their properties. If you see something unusual, we have a process in place for confirming your finding through our AIS Detector, Reynold Mack (651-295-9877). If Reynold identifies a finding as an invasive species, he will report the findings to the DNR for immediate action. The faster we identify an infestation, the quicker we can respond to keep it localized or to eliminate it. By becoming a

volunteer Aquatic Invasive Species Sentry, participants will learn:

- how to identify AIS along with native species
- the impact of AIS
- how they spread
- early detection, survey and reporting methods

Please join us at one of these sessions and help us keep Burntside free from any more aquatic invasive species. In addition, if you would like to be part of the AIS Task Force and help plan and execute next year's program, we are always looking for fresh new ideas. To register for a class and/or join the Task Force, please call me at 805-698-2578.

Hope to see you out on our beautiful Burntside Lake this summer!

Did you really come to Ely to do laundry?



Laundry Room Inc.
Ely, Minnesota

Daily 5am -10pm • 428 E Sheridan • 218-235-8672
Drop off Carharts to Cashmere • **Pick Up & Delivery** • Seasonal Billing Available • **Cabin Linens** We clean & store linens for next guest to pick up



ZUP'S
FOOD MARKETS

303 E Sheridan St., Ely
365-3188
www.zups.com

**MEATS, GROCERIES,
HOT & COLD DELI &
HOMEMADE SAUSAGES**

Mike's Liquor Store
The most complete wine selection in northern Minnesota
Beer, Microbrews, Liquors, Premium Cigars

8:00 AM - 10:00 PM Monday - Saturday 365-5087 Mark & Dottie Zojonc

PLEASE SUPPORT OUR ADVERTISERS

NORSHOR AGENCY INC.
 DEB CAMPBELL
 AGENT
YOUR INSURANCE STORE
 628 E. Sheridan St.
 Ely MN 55731
 Phone: 218-365-4665
 Fax: 218-365-2688
 debcamp63@msn.com • License No. 20014480



zUP NORTH REALTY
 Andrea Zupancich
 Broker/REALTOR®

218.749.0159 Ce
 andrea@zupnorth.com

21 Commerce Road • Babbitt, MN 55706
 218.827.3773 Fx • 877-967-2288 Tf

zUpNorth.com



THE ELY ECHO
The Voice of the North Country
 Locally Owned, Legal Weekly Newspaper
 Caring about Ely and its environs since 1972
New subscribers welcomed, all subscribers cherished
 Office at 15 East Chapman • 218-365-3141
 Printing • Design • Fax • Copies

- Annuals • Vegetables • Perennials • Seeds • Herbs
- Fertilizer • Soil • Wood Duck Nesting Boxes
- MN Native Perennials • Yard Art • Pots • AND MORE!

Old Truck Greenhouse

**OPEN DAILY:
 10AM-6PM**
 1485 Grant McMahan Blvd
 Ely
 365-3263
 Gift Certificates Available!



the Y YMCA **FEST DU NORD** 

August 31 - September 1, 2019

Join us for two afternoons of music at YMCA Camp du Nord on beautiful Burntside Lake in Ely, MN. Bring a lawn chair or blanket for seating, and a picnic. Concessions, beer and merchandise for sale.

This year's lineup includes the Grammy Award winning Okee Dokee Brothers, Mason Jennings, Jeremy Messersmith, Roe Family Singers, Ben Weaver, Lucy Michelle, Heatbox, Humbird, and Ely's own Van and the Free Candies. Visit dunord.org for performance details. Tickets are available at brownpapertickets.com or at the door.

CAMP VAN VAC
 A LAKESIDE RESORT
Sauna * Fishing * Campfire * Canoe
 Romantic log and stone housekeeping cabins on Burntside Lake. Summer rates from \$550 - \$1650 a week. Spring and fall discounts.
Fun * Boats * Blueberries * Serenity
 218-365-3782 www.campvanvac.com

**Steven Renneberg
 Kris Winkelman**
 Owners

1810 E. Sheridan Street
 Ely, MN 55731
 218-365-5358
 ArrowheadOutdoorsElyMN@gmail.com

ARROWHEAD OUTDOORS
 BAIT TACKLE HUNT CAMP
 Ely, Minn.

 ArrowheadOutdoorsElyMN.com



Burntside Lake Ice Out (1940-2019) and Ice On (1987-2018) Dates

Year	Ice Out Date
1940	May 11
1941	April 10
1943	May 2
1944	May 11
1945	April 12
1946	April 24
1947	May 13
1948	April 28
1949	April 28
1950	May 22
1951	May 5
1952	April 29
1953	May 5
1954	May 12
1955	April 21
1956	May 10
1957	May 1
1958	April 21
1960	May 1
1961	May 1
1962	May 6
1963	April 30
1964	April 18
1970	May 5
1971	May 3
1972	May 7
1973	April 27
1974	May 2
1975	April 30
1976	April 19
1977	April 24
1978	May 4
1979	May 12
1980	April 28
1981	April 12
1982	May 4
1983	April 23
1984	April 26
1985	April 26
1986	April 19

Year	Ice Out Date	Ice on Date	Days of Open Water
1987	April 16	December 17	245
1988	April 30	November 20	204
1989	May 6	December 3	211
1990	April 26	December 2	220
1991	April 24	November 26	216
1992	May 6	November 29	207
1993	April 30	November 28	212
1994	May 2	December 10	222
1995	April 30	November 25	209
1996	May 17	November 27	194
1997	May 1	December 8	221
1998	April 17	December 22	249
1999	April 28	December 17	233
2000	April 29	December 9	224
2001	May 1	December 28	241
2002	May 3	November 27	208
2003	May 2	December 3	215
2004	April 30	December 17	231
2005	April 18	December 17	243
2006	April 16	December 7	235
2007	April 28	December 1	217
2008	May 12	December 9	211
2009	May 1	December 14	227
2010	April 3	December 9	250
2011	May 1	December 17	230
2012	March 28	December 10	257
2013	May 19	December 19	214
2014	May 13	November 28	199
2015	April 21	December 25	248
2016	April 24	December 18	238
2017	April 19	December 9	234
2018	May 12	November 29	201
2019	May 5		

Earliest Ice Out March 28, 2012
Latest Ice Out May 22, 1950
Median Ice Out April 30

Earliest Ice On November 20, 1988
Latest Ice On December 28, 2001
Median Ice On December 9

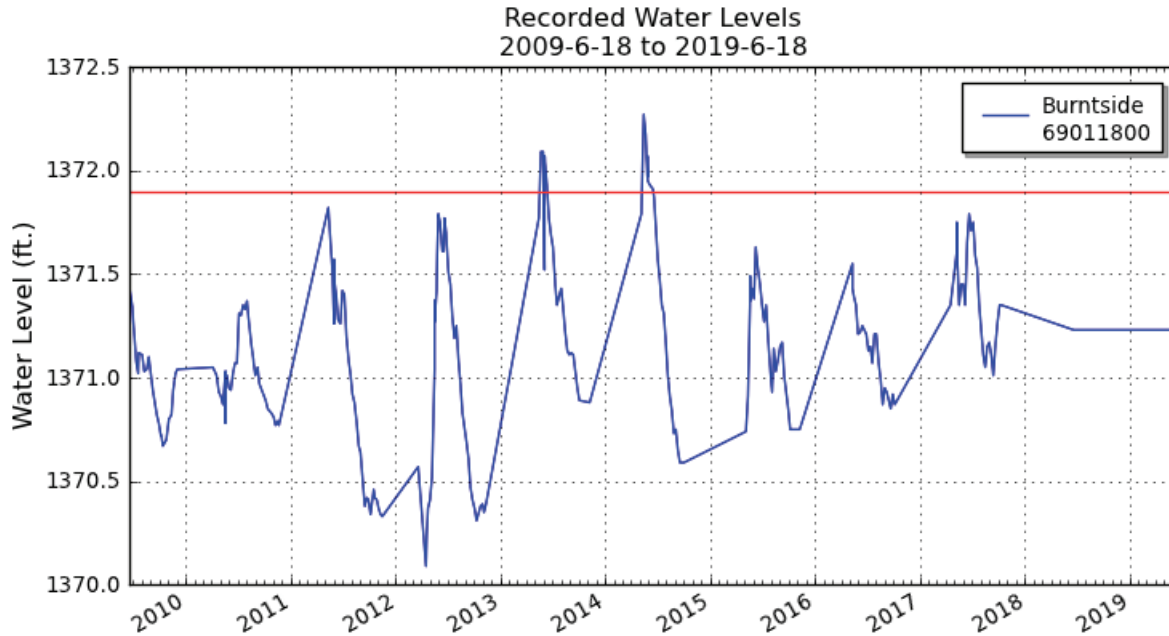
Fewest Open Water Days 194
Median Open Water Days 222
Most Open Water Days 257

Burntside Lake Water Levels

Lake name: Burntside
County: St. Louis

Water Level Data

Period of record: 09/13/1939 to 06/10/2019
 # of readings: 867
 Highest recorded: 1374.83 ft (09/29/1948)
 Lowest recorded: 1370.07 ft (10/26/1997)
 Recorded range: 4.76 ft
 Last reading: 1371.43 ft (06/10/2019)
[Ordinary High Water Level \(OHW\)](#) elevation: 1371.9 ft
 Datum: NGVD 29 (ft)




**STEGER MUKLUKS
& MOCCASINS**
MADE IN ELY, MN

33 East Sheridan Street, Ely
 Open Daily 9 a.m. www.mukluks.com
 Have a great summer! - Patti

Landscaping Sand & Gravel Rooter Service

Walsh Sewer & Septic Systems Co.
 Installation, Insulation
 Road Repair Service • Back Hoe & Dozer Work

Free Estimates
 Sewer Line Video Camera
 Jetter Service

218-365-4041 • 218-343-1231 **JIM WALSH**
 Licensed • Bonded • Insured P.O. Box 68
 Lic # 1586 13964 Lauder Blvd
 Plumbing Needs Winton, MN 55796



**Gerzin's
WOOD WIZARDS**
Custom Builders

www.elywoodwizardsllc.com **365-5311** Lic#20270430

**HEARTHSIDE
CORNER**



Mark & Donna Blanchfield
218-365-5013
Fax 365-5028

www.hearthsidecorner.com
hearthsidecorner@citlink.net
 1203 E. Sheridan St., Ely

Showroom Hours:
 Mon - Fri 10 am - 5 pm
 Sat 10-2 pm

Your Full Service Fireplace Shop
 • Free Estimates • Friendly Service

Minnesota AIS Detector Program

by Reynold Mack

As you may know the Burntside Lake Association is hard at work trying to control the spread of Aquatic Invasive Species into Burntside Lake and the surrounding lakes in the Arrowhead Region of Minnesota. This includes trained inspectors on our landings, decontamination units, Sentry helpers, our AIS Task Force Group, and the AIS Trained Detectors.

All of these groups, citizens living on the lake and/or users of the lake, are working together with the Sentry Program to keep an eye out for any unusual change on the lake that they may not understand. Previously we had to call the Minnesota DNR to have them come out and evaluate the sighting. That could take days in some cases, which is why the Minnesota AIS Detector Program was put into place. The Detector Program was developed by the Minnesota Aquatic Invasive Species Research Center {MAISRC} out of the University of Minnesota. (<https://www.maisrc.umn.edu/ais-detector>)

The AIS Detector Program is a volunteer program to provide for a statewide surveillance network working with our Lake Sentries and citizens to help evaluate a possible new infestation of an Aquatic Invasive Species that we haven't noticed before. The Detectors receive thorough high-quality training developed and reviewed by AIS experts. The training includes basic aquatic ecology, AIS identification, impacts, biology, plus Minnesota rules and regulations used to help prevent the spread of AIS. The

Burntside Lake Association Donates \$1,400.00

The Board of Directors of the Burntside Lake Association voted at their Fall 2018 Board Meeting to contribute \$1,400.00 to organizations who positively contribute to the quality of life on Burntside Lake and the community at large.

The following organizations received \$200.00 each: Ely Igloo Club, Ely Public Library, Ely Bloomenson Community Hospital Foundation, Independent School District 696, Morse-Fall Lake First Responders, St. Louis County Rescue Squad, and Minnesota Lakes & Rivers.

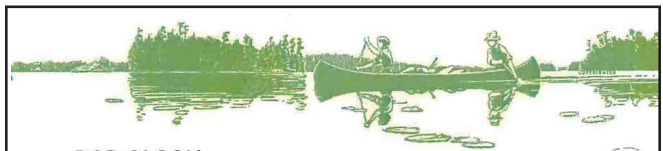
Detectors are trained in the reporting procedure to assure that the species finding is an invasive species, and is pin-pointed as to location, so it is entered into the statewide system of infested waters. The training involves an introductory on-line course consisting of six training modules reviewing the various invasive plants, invertebrates, fish, and regulations, reporting through the use of EDDMapS, plus interaction with the public, educational opportunities {never pass up an opportunity to provide education}, plus continue with the learning experience. After you pass the online training there is a 2 day class on reviewing the online material plus identification of specimens. The final is identifying additional samples the instructors bring that we haven't seen.

So, if you are out on the lake or looking over your shoreline and notice something that looks different don't hesitate to call or text Reynold Mack {651-295-9877}. We also have two other detectors available, one that works out of the North St. Louis Soil and Water Conservation District and covers Burntside Lake, Shagawa, Lake Vermilion, and the surrounding area and a detector is available from Lake County. If you can't contact Reynold call your area lake representative and they can direct your call to the correct person. We need all the help we can get in our efforts to control the spread of AIS. Think about doing some Sentry training.

Commercial
Residential
Industrial
Call us for all
your electrical needs!



Tim & Monica Cunningham - Master Electricians
13445 Villa Rd., Ely, MN 55731
(218) 365-6301
Licensed • Bonded • Insured



BOB OLSON

Canoe Country Outfitters, Inc.

629 E. SHERIDAN STREET • BOX 30 • ELY, MINNESOTA 55731
www.canoeconomyoutfitters.com • e-mail: cco@frontiernet.net
• Phone: (218) 365-4046 • 800-752-2306 • Fax: (218) 365-4046

CANOE TRIPS INTO THE QUETICO - BWCA WILDERNESS

Burntside Lake Membership Lists

By Reynold Mack

We have been trying for some time to develop a membership list of people who own or use property on Burntside Lake. In the past we used St. Louis County property tax records {<http://apps.stlouis-countymn.gov/parceltaxlookup/>}, and that seemed to work but it only provided parcel numbers along with names and addresses. We have been improving on these listings, and we have made some advances.

This past summer we put together the St. Louis County listings with our information that we use for keeping track of members and their location on the lake. We specify whether they are located on the east arm (EA), central part of the lake (Ctr), west end (West), north arm (NA) and water access properties (Is/WA). We are working on making e-mail listings for each area of the lake so we can notify people via e-mail if something unusual is happening in their area of the lake that they need to know about, like the prescribed burns.

Please note that if you share your e-mail address we won't share it with anyone. When we only had 70-100 e-mail addresses we could do that and send info out with everyone on a blind copy list. Now we have a little over 200 e-mail addresses and we have to use our web site {<https://www.burntside.org>} run by ten80north in Ely and they use a mailing system

called "Mail Chimp" which even provides more protection of your e-mail address.

It is a continual challenge to be certain we have the correct information on our membership list. There are many address and e-mail changes each year. Our Spring dues reminder cards (Ward's idea) were a great help in updating our lists. The actual membership list (on Excel) lists the following in order:


- Location on the lake: {EA, Ctr, West, NA, and Is/WA},
- Parcel ID Number,
- Last Name, First Name, Second Name,
- Address 1 {where we snail mail you},
- Address 2 {address on the lake}, could be the same as your snail mail address,
- e-mail addresses,
- Miscellaneous items {Board members, phone numbers, dues payments, etc.}

We hope you appreciate the work that goes into our membership listings, and want to have your e-mail address if you have one so we can reach you quickly. Again, we may send out an e-mail to a short list of people if we are trying to notify you of something of importance in your area of the lake. Again, thanks for your help.

At the Ely Echo...

We Print Photos.

We print memories.



4x6, 5x7, 8x10, Buttons, Magnets and Cards for Every Occasion!
See our kiosk at: 15 E. Chapman St., Ely or upload and order your photos at:
elyecho.photofinale.com

Jimmy Z's Sales

Free estimates
Free Installations



Toll Free (866) NEW DOCK
Office (218) 827-8400
Home: (218) 827-2478
Cell: (218) 343-4278
Fax: (218) 827-2148
Email: zup@frontiernet.net
www.jimmysales.com

• Snowmobile/RTV Trailer • Docks • Boat Lifts



Spirit of the Wilderness

Outfitting Your Needs

Canoe Rentals - Outfitting - Bait & Tackle
Outdoor Gear & Apparel

800-950-2709

2030 East Sheridan St., Ely MN 55731
www.elycanoetrips.com



KLUN LAW FIRM
Direction. Guidance. Results.

- BOUNDARY CONCERNS
- ROAD ACCESS
- EASEMENTS
- LAND USE
- ESTATE & CABIN SUCCESSION PLANNING



1 E. CHAPMAN ST.
ELY, MN 55731
218.365.3221
WWW.KLUNLAW.COM



from here to there...

218.349.1383
elyshuttle@gmail.com

SERVICES:

Airport pick up & drop off
(Ely, Hibbing, Duluth)
BWCA Entry Points

Shuttle Service

COMMERCIALLY INSURED



1325 E. Sheridan St. Ely, MN
218-365-3665

REAL ESTATE SALES

#4295 - Beautiful Lake Home - Fine crafted, log sided 4,320 square foot home with 3 bedrooms and 3 baths, 3 car detached garage with studio area above. \$1,380,000

#4395 - Expansive Lake View - 3 bedroom, 3 bath home with an exceptional gourmet kitchen. Phenomenal view with +-155' of sand beach on +-3.4 acres. \$695,000

www.elywildwoods.com

Dinner's by Deb LLC

Your personal cook for family, friends,
& any occasion in your home.

Deb Campbell
218.235.0155
debcamp63@msn.com

The Earth Moves with
**TISOVICH
EXCAVATING**

Serving the Ely, Babbitt, Tower and Lake Vermilion area



Quality Workmanship
Residential & Commercial
Complete Site Development

Free Estimates
No Job Too Small
Contact Us For 2nd Quotes

- Digging • Dozing • Trucking • Rock Drilling & Blasting • Landscaping
- Septic Systems • Demolitions • Block Retaining Walls • Sand & Gravel

1004 East Harvey Street • PO Box 276 • Ely MN 55731

Phone & Fax 218-365-6620

Email: info@tisovich.com

Visit our large website www.tisovich.com

Voltz TECHNOLOGIES

JIM ROBBINS
OWNER/OPERATOR

218.365.7783

jim@voltz.com

www.voltz.com

verizon

Authorized Wireless Retailer

Please Plan to attend the Burntside Lake Association

2019 ANNUAL MEETING

Saturday, August 3, 2019

Vermilion Community College Auditorium

- 8:30 am Refreshments and social time
- 9:30 am Meeting begins

Featured Speaker:

Douglas “Gus” Smith

District Ranger

Superior National Forest

TOPIC: HiLo Project – Overview and Update

