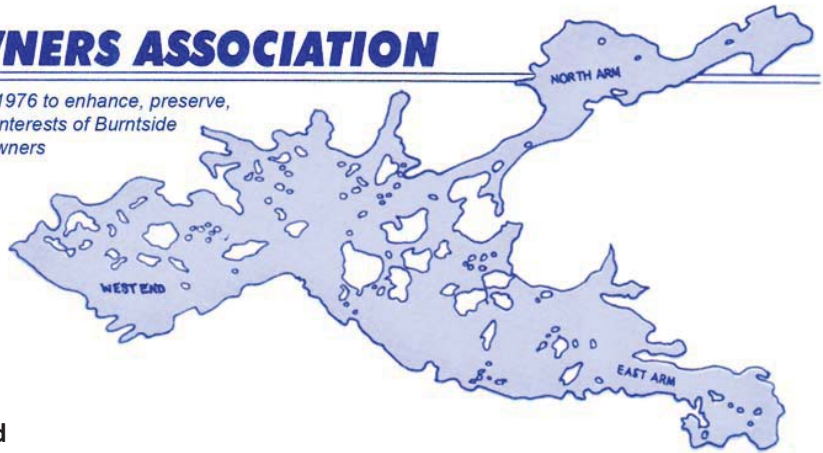


BURNTSIDE PROPERTY OWNERS ASSOCIATION

P.O. BOX 81 ELY, MINNESOTA 55731

*Incorporated in 1976 to enhance, preserve,
and protect the interests of Burntside
Lake property owners*



From the President .. by Phil Voxland

Volume XIX, Summer 2012

President

Philip Voxland
(612) 724-2200
(218) 365-5563

Vice President

Reynold Mack
(651) 295-9877
(218) 365-3331

Secretary

Tim Riley
(218) 525-6931
(218) 349-7788

Treasurer

Diedre Plude
(218) 349-3482

East Arm Reps:

Ward Nelson
(218) 365-6101
Pam Freeman
(218) 365-7659

North Arm Reps:

(2 to be elected)

West Arm Reps:

Tim Sundquist
(218) 365-4632
(218) 724-4143
Lee Lilya
(218) 365-6896

Central Reps:

Judith Welling
218-365-6284
(1 to be elected)

Island Reps:

Bob Leininger
(651) 484-2553
David Bahnemann
(651) 451-3845

In this annual newsletter there are a variety of articles including one with a few pictures from the Sundholm cabin photo albums. In 1921 my mother's brother Arvid Sundholm purchased the land on which he and Aunt Ellen built their cabin that began my family's commitment to Burntside. As I look at the old photos from the first days and later, there are people I do not recognize. But those pictures can still be meaningful for what they show in the background, or tell us about how in those early days Burntside lake was enjoyed and experienced. I am sharing these photos as a reminder of the history of this place where lasting memories are created and stories retold.

Board of Directors Vacancies

There are now three vacant positions for area representatives on the BPOA Board of Directors, two are for the North Arm and one is for the Central section. The Board ordinarily meets twice each year, on the Saturdays of the weekend following Memorial Day, and on the weekend following Labor Day. The term of a director is for two years. Board meetings are interesting with time for sharing stories of recent events, discussion of issues and their possible solutions, and carrying out the mission of the association.

Take this opportunity to participate by contributing your abilities, life experience, and viewpoints that will be valuable to our community! Please contact Phil Voxland or Reynold Mack if you are interested in being a candidate.

Annual Meeting Speaker

Bill Teft will be the speaker at our annual meeting. Bill is well known to readers of the Ely Echo, where he frequently writes on fascinating aspects of the natural life in the Ely and Arrowhead region. WELY has featured "Birding with Bill" with his observations of the seasonal migratory and permanent winged residents of Northeastern Minnesota. I recently participated in a superb

Please plan to attend the Burntside Property Owners' Association 2012 Annual Meeting

Place: Theater at the Vermilion Community College
1933 East Camp Street • Ely, MN 55731-1918 • (218) 365-6309

Date: **Saturday, August 4, 2012**

Time: Coffee, etc. 8:30 AM • **Meeting 9:30 AM**

Our speaker will be Bill Teft, of Ely Field Naturalists "The Nature of Burntside and the Ely Area"

“Master Naturalist” course taught by Bill, attended also by Burntsiders Tim Sundquist and Nancy Snyder. The Ely Field Naturalist group, shepherded by Bill, promotes awareness, knowledge, understanding and enjoyment of the world of Nature in the vicinity of Ely, Minnesota. Bill is an outstanding resource for our community, having served also on the faculty of the Vermillion Community College. Bring your questions about the “Nature of Burntside” to the meeting!

We Could Use Your E-Mail

This annual newsletter is mailed or distributed to over four hundred contacts. From time to time, email is used to send updates to our members that are more immediate and timely. However, we do not have e-mail addresses for many members. The BPOA has web site (www.burntside.org) and a Yahoo Groups blog (http://groups.yahoo.com/group/burntside_poa/). However e-mail is a very good way to contact people, at far less expense than postal mailings. The BPOA has a standing policy of not distributing its contact lists to other organizations or individuals. Please check at the Annual meeting to see that we do have your e-mail address if you would like to receive email from the BPOA.

Water Levels, Ice On and Ice Out, Rain and Wind

The water level was exceptionally low throughout the fall of 2011 when on December 17th, 2011 the lake was finally covered with ice. There was relatively little snowfall through the winter. 2012 has provided an unusually warm late winter and spring. In fact, the February Ely Winter festival weekend was (for some) shirtsleeve weather to view the snow sculpture displays in Whiteside Park. March daily high temperatures continued to be exceptionally high. The result was for Burntside a record early date for the ice to go out: March 28th! This newsletter contains a condensed spreadsheet of unofficial ice out and ice on dates. The data is based on volunteer records dating from the early 1940's.

While the lake began this year with very low water levels, steady rainfalls into early June have restored the lake nearly to ordinary high water levels. This rewarded hikers on the popular trail to the Kawishiwi falls east of Ely and Winton with spectacular waterfall viewing. The unprecedented rain which fell along the north shore of Lake Superior late in June caused much damage but did not hit the Burntside and Ely area. However, in the afternoon of July 4th, nature caught up to us when a wind and thunderstorm struck Burntside with a force that toppled many trees across the lake. Power outages were widespread as well. For some of us, recovering from the damage will be difficult and take a long time.

Ins and Outs of Buoys

The buoys that were removed last October are, as of April 27th, now back in place to provide warnings for safety hazards. The St. Louis County Sheriff's office has responsibility for placing and maintaining the buoys and has a contract with Lauren and Sheri Sawatzky of Vermillion Barging, Inc. for managing our hazard markers. This is a difficult job, and they have provided us timely and responsive service!

Last fall, as the buoys were being taken out, it appeared that around 10 would need to be replaced from normal wear and tear. Ordinarily this is an operating expense and responsibility of the County Sheriff's office. However this year the BPOA was initially asked to cover these replacement costs due to tight budgets in the county. Burntside has 147 buoys, far than any other lake in the county. Nonetheless, safety requires each and every one we do have throughout the lake. Your Board felt caught literally between a rock and a hard place, but reluctantly agreed to cover the approximately \$100 per buoy price. Fortunately just before a meeting to discuss this with County Commissioner Forsman was to be held, the request was withdrawn and the full complement of buoys has been provided. Board Members are being provided with a buoy map for the lake to help identify missing or out of place buoys.

Lake Service Provider Permits

There are new state regulations in effect in Minnesota relating to controlling aquatic invasive species. These new rules require individuals who are hired as “Lake Service Providers” to attend training and obtain permits to install or remove water-related equipment or structures from waters of the state. For more information here is a DNR website: <http://www.dnr.state.mn.us/lsp/index.html>

If you do make use of a lake service provider for installing or removing any of your “water-related equipment” (such as boats, boat lifts, trailers, docks, bait containers and live wells) your provider may be adjusting their scheduling or fees for their services. For example, trailers used to transport boats to and from Burntside need to be cleaned after removal from the lake. That will take more time and work on the part of the service provider.



Property Management
Lakeshore Vacation Rentals
Cabin Repairs & Maintenance

www.elylodging.com
(218) 365-4956
1323 E Sheridan St
Ely, MN 55731
John Swenson - Broker



Mat Roderick - CEO
mat@elyconstruction.com OFFICE: 218.365.2575
955 E Sheridan St. FAX: 218.365.6575
Ely, MN 55731 CELL: 218.235.1030

WWW.ELYCONSTRUCTION.COM

Buoy Placement on Burntside

Our contractor placing the Buoys on the lake is shown below. They are very responsive and interested in



correctly doing the placements.
Vermilion Barging Inc
Lauren & Sheri Sawatzky
2750 W. Wakemup Village Road
Cook, MN 55723
218-666-5512
Bubba@accessmn.com

Or call Sheriff's Office if Buoys are missing.
Sheriff of St. Louis County
In Duluth - Dave Phillips 0 218-726-2339
In Virginia - Bernie Mettler - 218-726-4351

BOREAL WOODWORKING



Fine homes, cabinetry & furniture

Michael Dietzman, Owner
MN LICENSE #20382066

BOREALWOODWORKING.COM
CELL 218.343.9411 / PHONE & FAX 218.365.5009
P.O. BOX 465, ELY, MINNESOTA 55731

"Always By Your Side"

Klun Law

Serving Burntside Lake since 1979
Real Estate: Buying, Selling & Developing • Cabin Succession Planning
Attorneys Kelly Klun, Rae Bentz, Amber Pederson
1 E. Chapman St. 218.365.3221
P.O. Box 240 Fax: 218.365.5866
Ely, MN 55731 Toll Free: 1.877.365.3221
www.klunlaw.com



Famous for Quality
MEATS,
GROCERIES,
HOT & COLD DELI,
& HOME MADE
SAUSAGES

www.zups.com

303 E. Sheridan St. • Ely • 365-3188


ATTN: BURNTSIDE LAKE PROPERTY OWNERS:

If your water access only property is in need if septic or outhouse pumping, we are working with a local septic contractor to have his barge on the lake this fall. We now have a list of water access people to remind you of the operations. If you are interested please contact Reynold Mack, Vice-President, Burntside Property Owners Assoc. 651-429-0174, 218-365-3331

Information of Interest to Burntside Property Owners


There have been several recent issues that may be of interest to our membership. They range from changes in names and organization that the BPOA joined late last year, to information on lake buoys for Burntside Lake to help our boating public.

- This year the BPOA joined both the Minnesota Seasonal and Recreational Property Owners Coalition {MS-RPO} and Minnesota Waters Organization. We were disappointed that Minnesota Waters ceased operations as of May 19, 2012. They have been very active in training programs {Aquatic Invasive Species}, connections and an information resource for lake associations. However, not all is lost, Minnesota Waters is now combined with forces with Conservation Minnesota Organization {www.conservationminnesota.org} to protect the “Lakes, rivers and Streams” of Minnesota that we all cherish. Hopefully this combined program will continue the good work being preformed by Minnesota Waters.
- Another change is that MSRPO {www.MSRPO.org} is undergoing a name change to “Minnesota Lakes and Rivers Advocates”.
- Both Phil Voxland and Reynold Mack attended a meeting of the surrounding lake association here in the arrowhead region of Minnesota. The symposium was called “Who Speaks for the Lakes” { <http://kawishiwiwatershed.com/symposium>}. It was sponsored by WICOLA, Kawishiwi Watershed Protection Project and the Ely Field Naturalists. The symposium covered a lot of territory but it was good to meet with the other lake associations surrounding us {WICOLA, Vermilion Sportsman Club and BPOA}. We had a meet and greet before the meetings and our BPOA had a booth to discuss issues and information about Burntside Lake. The other Lake Associations and the DNR, Forest Service, Minnesota Sea Grant, St. Louis Soil and Conservation District, Rainy River Basin plus other booths as well. Hopefully these symposiums will be on a regular schedule so we all can share and learn best practices for our lake.
- Hopefully you have noticed the water levels on Burntside are higher than normal, which has been causing some problems with boating. Rock outcroppings that are normally visible may be slightly submerged which could cause damage to unsuspecting boaters. These areas do not have buoys marking them because they are so visible under normal water levels. We have been in contact with our buoy placement contractor, Vermilion Barging. They have sent us a map of Burntside with the buoy locations shown on the map. We have 147 buoys on the lake to help protect our boaters on the lake. If you feel that a buoy is missing or out of place contact one of our board members so we can help identify and pin-point which buoy and notify our contractor. We have made copies of the buoy mappings and are supplying them to our board as well as Mike Loisel, so call us and we can help.



all Day
BUILDERS

Josh Day
 ☎ 218 365 3500
 📠 218 365 3503
 alldayllc@gmail.com
 205 North Central Avenue
 Ely, Minnesota 55731



DAY BROTHERS BARGING
COMPLETE PORTABLE BARGING SERVICES
"Floating Above The Soil."

Phone: 218.365.3500
Fax: 218.365.6495

P.O. BOX 341
Ely, MN 55731



1325 E. Sheridan St. Ely, MN
218-365-3665

REAL ESTATE SALES

#3367 - **Burntside Log Home** - Hand scribed 2 bedroom, 2 bath log home with stone fireplace. Spectacular views with almost 5 acres and +-225' of shoreline. **\$650,000**

#3447 - **Burntside Lake Lot** - Over 1/4 mile of frontage on the North Arm with 29.6 acres of large pine and exposed ledge rock that Burntside Lake is famous for. **\$599,000**

www.elywildwoods.com



1230 E. Sheridan St.
Ely

365-3216

- Groceries • Meats
- Homemade Sausage • Broasted Chicken
- Bakery • Deli

HEARTH SIDE CORNER



Mark & Donna Blanchfield

(218) 365-5013
Fax 365-5028

hearthsidecorner@citlink.net
www.hearthsidecorner.com

1203 E. Sheridan St.
Ely, MN 55731

Your Full Service Fireplace Shop

- Free Estimates • Friendly Service

Showroom Hours:
Mon-Sat 10am-5pm



Spirit of the Wilderness

Outfitting Your Needs

Canoe Rentals - Outfitting - Bait & Tackle
Outdoor Gear & Apparel

800-950-2709

2030 E Sheridan St Ely, MN 55731

www.elycanoetrips.com

Custom handcrafted,
handcarved wood doors,
and furnishings.



Huisman Concepts, Inc.

2027 Haapala Road
Ely, Minnesota
218-365-4699



www.huismanconcepts.com

*A complete design
and construction company*

John Huisman
2027 Haapala Road
Ely, MN 55731
218-365-4699



Huisman Concepts, Inc.

www.huismanconcepts.com



Jimmy Z's Sales



**Authorized
Dealer**

Email: zup@frontiernet.net
www.jimmyzsales.com

**Free Estimates
Free Installations**

Toll Free: (866) NEW DOCK
Office: (218) 827-8400
Home: (218) 827-2478
Cell: (218) 343-4278
Fax: (218) 827-2148

- Snowmobile/ATV Trailers ▪ Docks ▪ Boat Lifts



BURNTSIDE BARGE SERVICE
LOADS TOO LARGE OR MESSY FOR
YOUR PERSONAL WATERCRAFT

MIKE LOISEL

BURNTSIDE LAKE

218-365-6171 SUMMERS
952-933-4275 WINTERS

MIKELOISEL@GMAIL.COM

Burntside Lodge



365-3894

unique gifts • fine wines
lakeside dining • outstanding cuisine
large selection of burntside apparel

Burntside Lake Ice Out (1940-2012) and Ice On (1987-2012) Dates

Year	Ice Out Date	Year	Ice Out Date	Ice on Date	Days of Open Water
1940	May 11	1987	April 16	December 17	245
1941	April 10	1988	April 30	November 20	204
1943	May 2	1989	May 6	December 3	211
1944	May 11	1990	April 26	December 2	220
1945	April 12	1991	April 24	November 26	216
1946	April 24	1992	May 6	November 29	207
1947	May 13	1993	April 30	November 28	212
1948	April 28	1994	May 2	December 10	222
1949	April 28	1995	April 30	November 25	209
1950	May 22	1996	May 17	November 27	194
1951	May 5	1997	May 1	December 8	221
1952	April 29	1998	April 17	December 22	249
1953	May 5	1999	April 28	December 17	233
1954	May 12	2000	April 29	December 9	224
1955	April 21	2001	May 1	December 28	241
1956	May 10	2002	May 3	November 27	208
1957	May 1	2003	May 2	December 3	215
1958	April 21	2004	April 30	December 17	231
1960	May 1	2005	April 18	December 17	243
1961	May 1	2006	April 16	December 7	235
1962	May 6	2007	April 28	December 1	217
1963	April 30	2008	May 12	December 9	211
1964	April 18	2009	May 1	December 14	227
1970	May 5	2010	April 3	December 9	250
1971	May 3	2011	May 1	December 17	230
1972	May 7	2012	March 28		
1973	April 27				
1974	May 2		Earliest Ice Out	March 28, 2012	
1975	April 30		Latest Ice Out	May 22, 1950	
1976	April 19		Median Ice Out	April 29	
1977	April 24				
1978	May 4		Earliest Ice On	November 20, 1988	
1979	May 12		Latest Ice On	December 28, 2001	
1980	April 28		Median Ice On	December 7	
1981	April 12				
1982	May 4		Fewest Open Water Days	194	
1983	April 23		Median Open Water Days	221	
1984	April 26		Most Open Water Days	250	
1985	April 26				
1986	April 19				

These unofficial dates have been gathered by Reynold Mack from a number of sources including the wall of an unnamed boathouse and observations by various residents over a period of nearly 70 years. Many are from Jay Mackie, on the West end of Burntside and data from Dick Maki via his father's cabin log book, East Arm, Minister Bay. Waino Maki, Dan Lindberg, Mark Cherne and Lonnie La Montagne of Burntside Lodge also provided dates. (1942, 1959, and 1965-69 are missing, if you have data let us know!)

Conservation and Preservation of Islands on Burntside

The Nature Conservancy, The Trust for Public Lands, and the Minnesota Land Trust have enabled future generations of Burntside stakeholders to experience and appreciate the scenic and natural assets this lake. Two more recent acquisitions are described here:

Trust for Public Land Preserves Gaul Island

Phil Voxland, BPOA President, earlier this spring noticed in St. Louis County records that an Island in the west end of the lake was owned by the Trust for Public Land. On old lake maps this island was identified as “The Isle of Gaul”. The island actually consists of three separate areas, joined together by narrow outcroppings. Quite likely this unusual name originated from a student who in a Latin language class translated Caesar’s Gallic Wars Commentaries. The first of Caesar’s books begins with the phrase “All Gaul is divided into three parts ...”

Shaun Hamilton, of the Trust for Public Land, provides this background on the Gaul Island:

“When the opportunity came to our attention to acquire Gaul Island (known as Hayes Island in the plat book) from the Harri family, The Trust for Public Land elected to pursue it because of its position between Burntside Islands SNA [Scientific and Natural Area] and Long Island (which we had worked with the Superior National Forest to get into US Forest Service ownership) and proximity to Listening Point. The landowners were three siblings who now live out of state and decided to sell the islands (3 total) for development if a conservation sale was not a short-term possibility.

The Trust for Public Land stepped up and purchased Gaul Island in December of 2010 (as an interim landowner, as we do not permanently own and manage land) because of the areas ecological, cultural and historical significance.

The Trust for Public Land is currently in discussions with the State about the possibility of adding Gaul Island to the Burntside Islands SNA. I would welcome the opportunity to visit with you regarding some thoughts that I am formulating on how to help the public collaboratively protect, celebrate, and enjoy these islands and this landscape/waterscape.” (email to Phil Voxland, BPOA President)

Legacy Amendment funds protect Burntside Lake island forever

September 2011 -- The Minnesota Land Trust has just protected the highly visible 14-acre Miller Island in Burntside Lake. The project was made possible by combining a donated conservation easement from the island’s owner, along with funding from the Outdoor Heritage Fund -- created when Minnesota voters passed the Clean Water, Land and Legacy Amendment in 2008.

“I want people to be able to enjoy the lake as I have”, said landowner Dr. Carl Smith, who has owned the island since 1978. “I grew up in New York City but had many great outdoor experiences in the Adirondacks and in Maine. After settling in St. Louis where my wife and I raised our family, we wanted to find a summer place where we could have similar experiences to the ones I had in Maine – and northern Minnesota was a lot closer to Missouri than Maine”.

Anglers have been casting their lures along the rocky shoreline of Miller Island for generations. A local boat tour stops at one end of the island to let visitors admire a pair of eagles that return each year to nest in a tall pine. “I think the island should be named ‘Eagle Island’” says Smith, adding “Most people know this as the island with the eagles”. The conservation easement guarantees that the rocky shoreline will remain healthy for fish and the island’s forested interior will remain wild.

The Land Trust has been active in the Burntside Lake area for several years and has protected seven other properties on the lake including Listening Point, the historic and inspirational home of wilderness advocate Sigurd F. Olson. Burntside is one of the great gems of Minnesota lakes, serving as an entry point to the Boundary Waters as well as a source of drinking water for the City of Ely.

From the Old Photo Albums

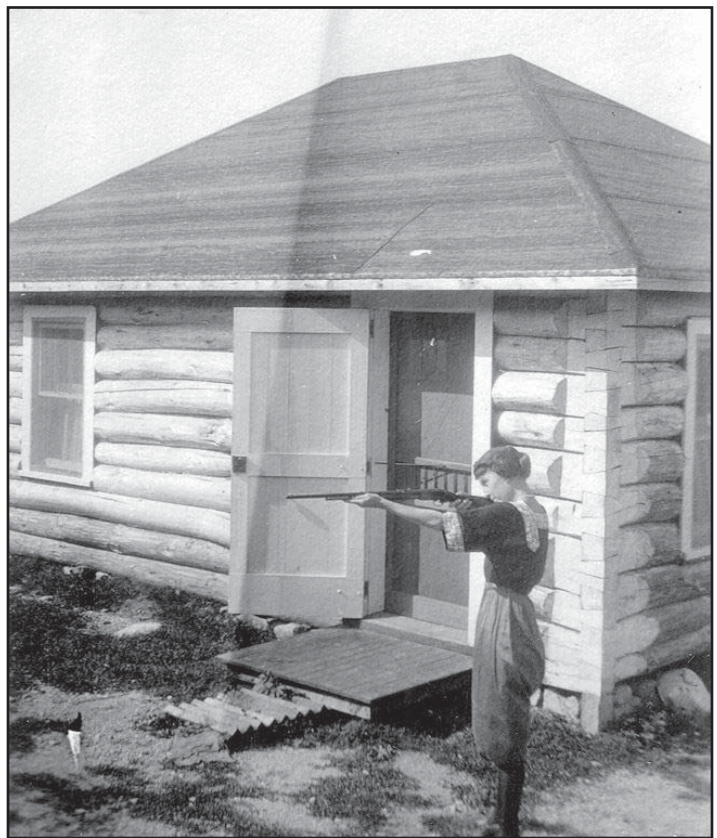
Some families have held properties on Burntside for many years, and still treasure photographs from those early times. Nowadays those old pictures can be more historically interesting for what can be seen in the background. So, to show our lake history here are some pictures beginning from a time when lots were sold along the south shore of the lake after they had been logged. In 1921 Arvid and Ellen Sundholm purchased cabin sites west of where now there is the Van Vac Public Landing. The lots were barren from logging, with mainly saplings, rocks, gravel, and weeds to be seen. Notice the pole tent, the style of log cabin construction, and the outdoors outfit Ellen Sundholm wore in those days.



1920 - Arvid Sundholm has pitched a tent on the Burntside shoreline near Sandemar.



1921 - Two identical cabins were built on recently logged over lots. Here a screen porch roof has just been added.



1921 - Ellen Sundholm steps out the back door, and takes aim

Sunrise

Cabin Care & Construction

- New Construction • Renovations and Remodels
 - Custom Woodworking • Finish Carpentry
 - Cabin Caretaking & Maintenance
- Drew Shock (218) 365-2147 Ely, MN**
 Experienced • Licensed • Insured
 License # 20497400 www.efysunrise.com

Good Dog Island and the Peat Moss Solution

One of the few, if not the only, Burntside property to be sold in 2011 was a small island very close to the Crab Lake Portage into the BWCA. Though county records have the area as 1.25 acres, it is closer to half that size. The previous owner had approvals to construct a new cabin, replacing on the same footprint an earlier cabin. An old small shack also provided bunks and camping while the new 600 square foot cabin was under construction. A primitive outhouse sat atop the high point on the island.

Eric Webster and Jill McElmurry had canoed the BWCA while living in the Twin Cities and continued after they relocated to Albuquerque New Mexico. Eric’s mother Pam Webster and stepfather Peter Davis established a year round home on White Iron Lake not long after Eric introduced them to Ely in 2005. Eric and Jill had always shopped the available listings of real estate, and found last year that there were more and better properties on the market in their price range. Ely realtor Gordon Sheddy (Sky-Blue Property) took them out to several water-access cabins and with Gordon’s encouragement they settled on this little gem of a Burntside island. The island, though small and needing substantial work to complete the construction, was a wonderful opportunity, and so the sale was agreed to and closed in September 2011.

A satisfactory way to deal with septic requirements of St. Louis zoning and public health regulations had to be found and approved by the County before the cabin could be occupied for any length of time. Eric and Jill demanded an installation which would meet or surpass minimal septic standards and yet conform to the island’s small footprint. With those constraints in mind, only a few choices could be considered. Holding tanks, grey water systems, and a traditional septic mound installation were evaluated; in the end they decided that a peat moss system would be the best solution.

A peat filter pretreats septic tank effluent by filtering it through a two-foot-thick layer of sphagnum peat before sending it to the soil treatment system. Peat is partially decomposed organic material with a high water-holding capacity, large surface area, and chemical properties that make it very effective in treating wastewater. Unsterilized peat is also home to a number of different microorganisms, including bacteria, fungi, and tiny plants. All of these char-

acteristics make peat a reactive and effective filter. (<http://www.extension.umn.edu/distribution/natural-resources/DD7669.html>)

Although nearby Islands and inlets consist of enormous solid rock outcroppings, this property consists of “rubble”, that is a mass of rocks, small boulders, gravel and sand, all satisfactory for excavating and installing the tanks for peat moss filters. The same company that maintains Burntside’s buoys , Vermilion Barging (<http://www.lakevermilion.com/bargerservices/>), prepared a design for peat moss treatment. Their proposal to install a system superior to minimum requirements was agreed to by St. Louis County authorities in November 2011.

This spring, construction resumed on “Good Dog Island”, as Eric and Jill fondly have named their new retreat. Carpentry, interior plumbing, electrical rewiring, and septic installation by Ely area firms are all underway with an eye towards finishing major work by the end of August 2012.

In addition to an initial septic tank, a final series of peat moss filter containers are required. In this case, the designer specified one tank plus one more for the single bedroom of the cabin. The filter tanks took the revered position of the previous outhouse (at the height of the island), and were surrounded by cleaned sand carried onto the island by barge. The tops of the filters are accessible for the required occasional cleaning, maintenance, and replacement of the peat moss. Under normal usage conditions, the peat moss may last 10 or more years before it becomes ineffective. As with all septic systems, the peat moss system requires periodic checking to indicate whether maintenance is necessary.

Peat Moss containers surrounded by cleaned sand



BBC Broadcasts from Burntside



Beginning in early May the British Broadcasting Corporation, set up live broadcast location at Sigurd Olson's Listening Point near Outlet Bay on the West end of Burntside. The BBC multi-part series documentary "Planet Earth Live" features live by satellite broadcasts from remote locations. The shows from Ely covered black bears being studied by the North American Bear Center and Wildlife Institute coupled with coverage from Kenya of the Meerkats in the Kalahari Desert.

National Geographic also teamed with BBC in presenting USA broadcasts of the wild animal documentaries. The BBC transmissions reached 140 countries worldwide. Listening Point was selected as the base station, giving great publicity for Ely, the Listening Point Foundation, and Burntside lake.

Although from the lake almost no evidence of the elaborate technical setup could be seen, portable generators, satellite uplink production trailers, were placed on private drives near neighboring cabins and to Listening Point. Board member Tim Sundquist generously loaned his garage for the broadcast crews to setup and store equipment. Chuck Wick's nearby yurt served as a snack and break lounge for the staff, Tim and Carol Sundquist hosted visitors and after broadcast get-togethers.

On a day before the first transmissions, a helicopter and float plane were scooting around the west end getting scenery and action footage.

On her blog, Julia Bradbury BBC's popular presenter for Planet Earth. live had these memories:

"Life has been a surprising mix of live show adrenalin fuelled days, wild bear walking deep in the woods, karaoke nights in the Steak House, and long late nights spent in the edit trying to get films ready. We've made the local news, got caught in a forest fire, and eaten enough french fries to wear jeans with an elastic waist."
(<http://www.juliabradburynews.com/>)

Landscaping Sand & Gravel Rooter Service

Walsh Sewer & Septic Systems Co.

Installation Septic Tank Pumping
Road Repair Service
Back Hoe & Dozer Work
Free Estimates
Sewer Line Video Camera

218-365-4041 • 218-343-1231
Licensed • Bonded • Insured
Lic #1586
Plumbing Needs

JIM WALSH
P.O. Box 68
13964 Lauder Blvd.
Winton, MN 55796



Joe's Marine & Repair, Inc.

JOHNSON • LUND • STIHL • ARIENS

25 W. CHAPMAN ST. • ELY, MN 55731
(218) 365-6264

Winter Fishing Encampment by Van Vac Public Access

Depending upon the location, the time of day, the month, and the weather, Burntside lake “belongs” to different people. Early February 2012 was unseasonably warm, ice houses had already been set up a new community just offshore from the Van Vac road public landing. A voice from inside one of the shelters said, “Yah, same guys every year, we’re retired, you know”.



Recommended Minimum Ice Thickness
(Rough Guidelines for New Clear Ice Only)


2" or less
STAY OFF!!

4 Inches
Ice Fishing

5 Inches
Snowmobile or ATV

8 - 12 Inches
Car or Small Pickup

12 - 15 Inches
Medium Truck

 **Department of Natural Resources** 



"The Bull of Burntside"

9" x 13" image size

The latest limited edition print by Ed Labernik.

Available at: Kess Gallery, Ely Chiropractic Office & Burntside Lodge. (Summer only)

Purchase online at: www.greatlakesart.org

 **STEGER MUKLUKS™**
& MOCCASINS

33 East Sheridan Street • Ely, MN
Open Daily 9 a.m.. • www.mukluks.com
Have a great summer! ~ Patti

MPCA Returns to Burntside for Water Quality Assessment

In 1994 a comprehensive Lake Assessment of Burntside's water quality was conducted by the Minnesota Pollution Control Agency. The results of that assessment were essentially favorable. This MPCA has returned now to repeat the assessment and make updated recommendations from those results. Levels of calcium in the water also to be measured. Low levels of calcium inhibit the growth of the invasive zebra mussels which are spreading alarmingly in some Minnesota Lakes.

On May 23rd, Mike Loisel, Ward Nelson and Reynold Mack met Jesse Anderson from the Minnesota Pollution Control Agency (MPCA) and a student intern from UMD at the Van Vac public landing to head out for the water sampling. The lake looked pretty good that day, and the location of the three 1994 sampling spots were reached easily. There were two surprising items noted during the testing. First the Secchi Disk Readings were only 14 to 15 feet, but there was some wind. The other item was good news, oxygen levels at depth {100 to 120 feet depending on location} were 10 parts per million (ppm). They were checking on oxygen levels for lake trout evaluations. At least 7 ppms are needed to have a thriving lake trout population. So 10 ppms is great, since that is close to the saturation level for oxygen in water.

(More recent BPOA volunteer Secchi disk readings have registered over 20 feet in depth. These water clarity readings are a good approximation of overall water quality. The Secchi disk is a white painted metal disk which is gradually lowered deeper and deeper in lake water until the disk is no longer visible. Burntside volunteers for the MPCA have been making readings across the summer and annually reporting their results to the MPCA.)

Sampling includes taking water from just beneath the lake surface, and also at extreme depths of the lake. In 1994, the MPCA drew samples at from three widely separated deep water locations at several times across that summer and this year the testing will take place at approximately the same sites.

Jesse will be out testing in June, July, August and September of this year, and May, June, July, August and September of next year. They took samples in the North Arm {the hole at the narrows}, in front of Outlet Bay {there is a hole there, we didn't quite hit that but were close enough} and then by Waters Island where the deepest spot is 124 feet. Jesse's three GPS units were showing 140 feet but his hand held meter read 124 feet, and his drop line carrying the probes {oxygen, depth, and temperature} measured 38.1 meters or 125 feet. Temperature at depth was 6 degrees C, or 42.8 degrees F.

The MPCA will also be testing Crab Lake, which is in the BWCA. They will do that one in June at a Crab Creek site. Samples were taken for calcium as well. They will do those in May then August. Calcium levels remain relatively constant over time. No evidence of the Spiny Water Flea was seen, but the did take a water was sampled at a depth 1 meter off the bottom at the Waters Island location.

Jesse Anderson (MPCA) and Mike Loisel checking a deep water sampling container.



Commercial
Residential
Industrial

Call us for all your electrical needs!
Tim and Monica Cunningham - Master Electricians
13445 Villa Rd. Ely, MN 55731
(218) 365-6301
Licensed - Bonded - Insured

OUR BAIT IS GUARANTEED TO CATCH FISH OR DIE TRYING



Phone: 218-365-5358
Fax: 218-365-8900
1810 E. Sheridan St.
Ely, MN 55731

NATE'S REMOTE SITE SERVICE

BURNTSIDE LAKE

OUTHOUSE PUMPING AND MAINTENANCE
REMOTE BARGING SERVICE
SEPTIC PUMPING AND MAINTENANCE
CONTACT

NATE BJORK • 218-404-6296
P.O. BOX 247 • BABBITT, MN 55706



MARINE & SMALL ENGINE REPAIR

2068 HIGHWAY 169 ELY, MN 55731

218-365-2555

HONDA
ENGINES

BOB MATSON/OWNER

Pick Up & Delivery

Snapper Lawn & Garden - Jonsered Chain Saws

Rental Equipment

Mike's Liquor Store

The most complete wine selection in northern Minnesota

Beer, Microbrews, Liquors
8:30 am - 10 pm Monday - Saturday

email: djdusich@frontiernet.net

Dan & Jayne Dusich

365-5087



501 E. Sheridan St. • 365-2100

- Full Service Salon • Gift Certificates Available
- Tanning • Acrylic Nail Service

WELLS
FARGO

Timothy P. Riley, CFP®

Wealth Management Specialist
Investment Management & Trust

Private Client Services

222 W Superior St, Ste 200

MAC N9539-020

Duluth, MN 55802

218 723-2762

218 723-2660 Fax

800 777-8534 Toll Free

Defenbaugh Law Office

WILLIAM E. DEFENBAUGH, JR.

Attorney at Law

Certified Real Estate Specialist

107 East Camp St.

P.O. Box 630

Ely, MN 55731

Phone: (218) 365-4977

Fax: (218) 365-6164

bill@defenbaughlaw.com

The
pebble
space

ELY | 229 e sheridan . ely mn

p | 218 365 0809

VIRGINIA | 105 5th avenue n . virginia mn

p | 218 741 5610

e | pebblespaco@gmail.com

w | www.pebblespaco.com

z'UP
NORTH
REALTY

Andrea Zupancich

Broker/REALTOR®

218.827.2288

andrea@zupnorth.com

15 Commerce Road • Babbitt, MN 55706

218.827.2478 Hm • 218.749.0159 Ce

218.827.3773 Fx • 877-967-2288 Tf

zUpNorth.com



NORSHOR AGENCY INC.
YOUR INSURANCE STORE

DEB CAMPBELL
AGENT

628 E. SHERIDAN ST
ELY, MN 55731

Phone - 218-365-4665

Fax - 218-365-2688

debcamp63@msn.com

License No. 20014480

Gerzi's
WOOD WIZARDS
Custom Builders

365-5311

www.elywoodwizardsllc.com

Lic# 20270430

CAMP VAN VAC
A LAKESIDE RESORT

Sauna Fishing Campfire Canoes
Romantic log and stone housekeeping cabins
on Burntside Lake. Summer rates from
\$440-\$1400 a week. Spring and fall discounts.

Fun Boats Blueberries Serenity
218-365-3782 www.campvanvac.com

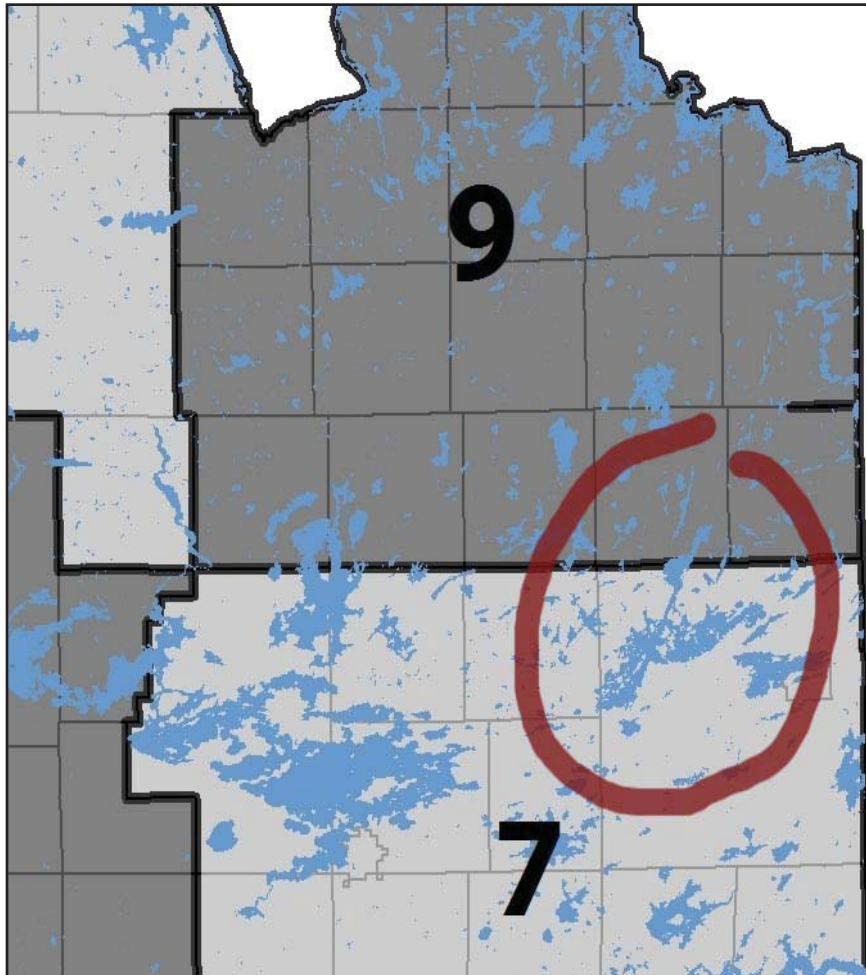
Viewing Burntside Data in County Google Maps

St. Louis County publishes county land records data viewable in Google Earth to provide businesses and residents the ability to explore and view county data. Property boundary lines should not be used as a substitute for an official survey, consult a registered surveyor. Google Earth is required to view these files. Download Google Earth for free from: <http://www.google.com/earth/index.html>.

This brief overview shows how to download the public data files from St. Louis County to view property boundaries ownership and valuation data. If you are unfamiliar with using Google Earth, after installing it, spend some time learning how to search for locations and how to move your position and viewpoint.

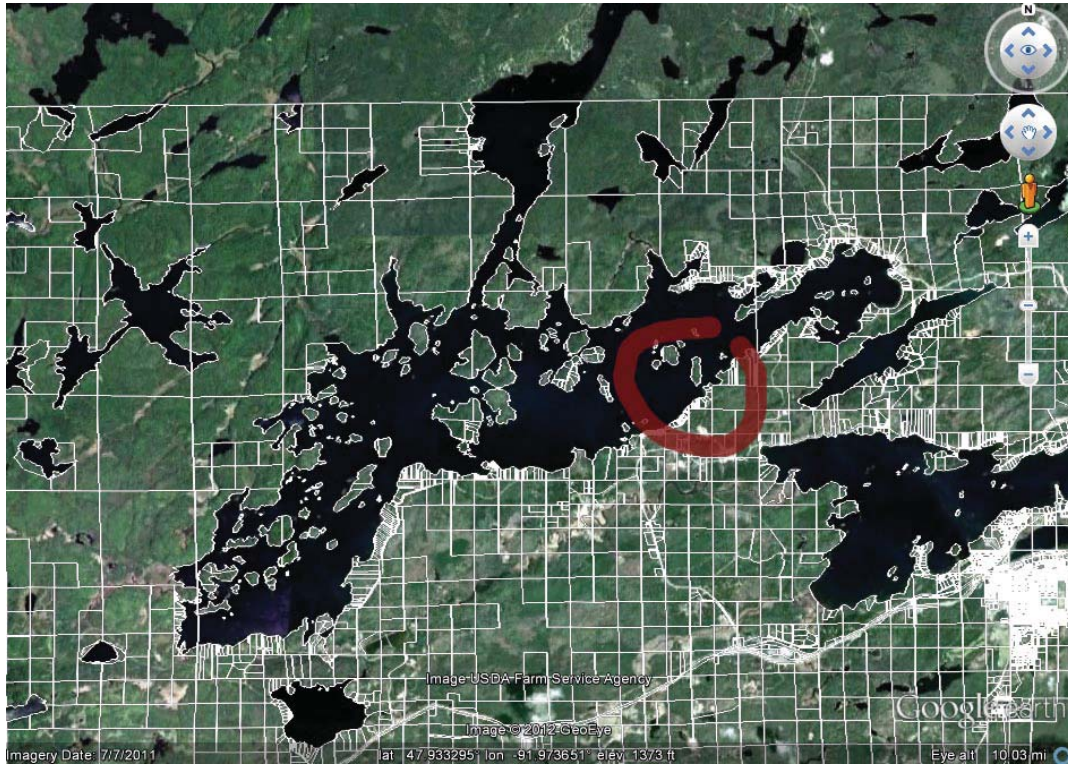
First access the County web site: <http://www.stlouiscountymn.gov/> Select the “Property Map Search” option. This will bring you to the web page for downloading the data files (in “KMZ” format) needed by Google Earth. Due to the large size of the county, the data is presented in smaller regions. Currently most of Burntside Lake is in Region 7, but the northernmost portion of the North Arm is in Region 9.

Click on the selection map or a link below the map to download the KMZ file corresponding to a map region. When prompted, choose Open With in Firefox or Open in Internet Explorer to open the KMZ file in Google Earth.

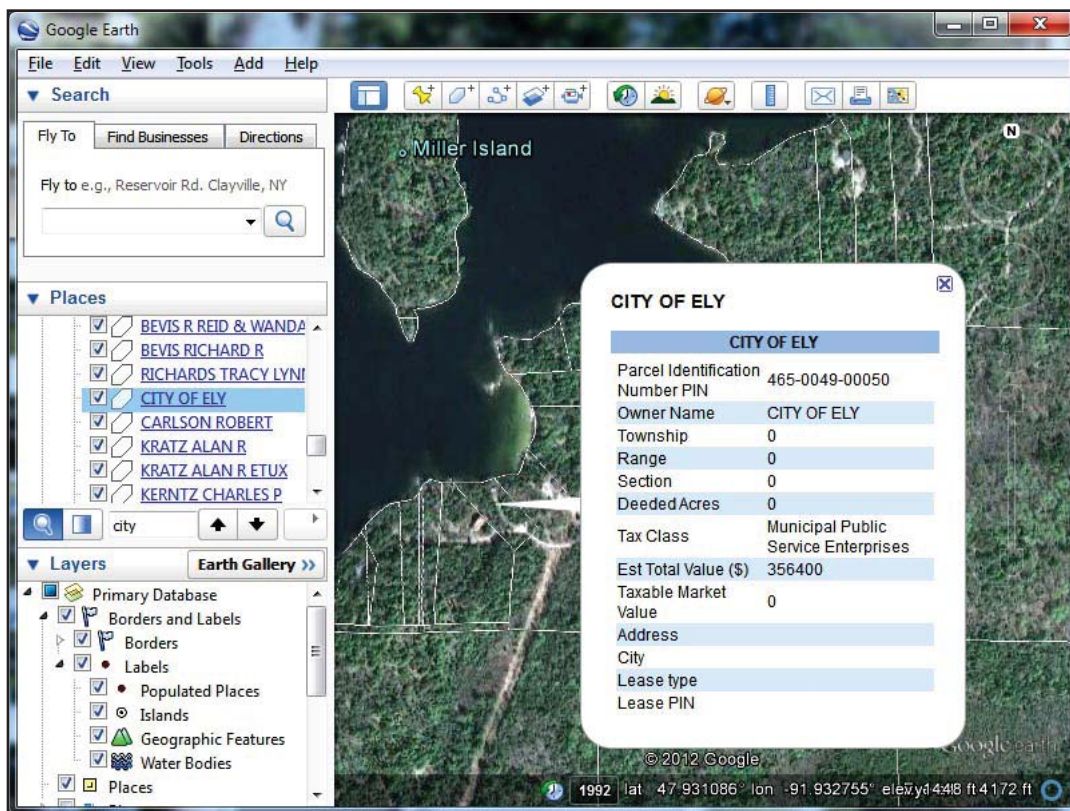


Burntside Lake data is contained in two regions
(Portion of Map from the St. Louis County Parcel and Boundary Web Site)

The entire data region of the county is shown when the data is first loaded into Google Earth. This is a closer view of Burntside Lake with property parcel boundaries are shown in white.



Once you have zoomed into an area of the lake that interests you, it is possible to find specific parcel information by clicking a pointer within the parcel’s boundary. This example is of the City of Ely’s pumping station, in “Pump House Bay”, near Miller Island.



From the Treasurer's Desk...

From the BY-LAWS dated 9/10/76, the purpose of the **BURNTSIDE PROPERTY OWNERS' ASSOCIATION** is to "enhance, promote and protect the interest of property owners on Burntside Lake and the immediate watershed thereof." As a property owner, that's your interest! There is no political agenda. Wouldn't you like to join?

We send the newsletter to all property owners, members of the BPOA or not, with the hope that many more property owners will send in the \$12.00 dues. We are able to keep dues low because of the advertising in the newsletter. We encourage you to patronize the businesses that advertise here.

Please clip the form printed below. Please send your \$12.00 for 2012 dues along with the form below to: BPOA, P.O. Box 81, Ely, MN 55731. Or use the enclosed envelope
Thank You



(Clip and Send) Send to: BPOA, P.O. Box 81, Ely, MN 55731

2012 Property Owner Dues and/or Address Change Notification

Name (Please Print): _____

Mailing Address (include only if changed): _____

E-Mail Address: _____

- Enclosed are 2012 Dues of \$12.00
- Please note my change of address.
Or my e-mail address
- Please remove me from your mailing list.

