



## BURNTSIDE PROPERTY OWNERS' ASSOCIATION

P.O. BOX 81 ELY, MINNESOTA 55731

Volume XVII, Summer 2011

### BPOA BOARD President

Reynold Mack  
(651) 295-9877  
(218) 365-3331

### Vice President

Philip Voxland  
(612) 724-2200  
(218) 365-5563

### Secretary

Tim Riley  
(218) 525-6931  
(218) 349-7788

### Treasurer

Diedre Plude  
(218) 349-3482

### East Arm Reps:

Ward Nelson  
(218) 365-6101  
Pam Freeman  
(218) 365-7659

### North Arm Reps:

Martha Gamble  
(218) 365-7158  
Corky Johnson  
(612) 554-2990

### West Arm Reps:

Tim Sundquist  
(218) 365-4632  
(218) 724-4143  
Lee Lilya  
(218) 365-6896

### Central Reps:

Mike Loisel  
(952) 933-4275  
(218) 365- 6171

### Island Reps:

Bob Leininger  
(651) 484-2553  
David Bahnemann  
(651) 451-3845  
Melissa Buss  
(952)-925-9190

### Member at Large:

Bryan Stenlund  
(218) 327-8937

## From the President ...by Reynold Mack

How long was our winter this year? It just lasted forever; boy were we spoiled last year. By the time you get this newsletter we should be well into summer and hopefully it will be warmer. Real Estate Taxes were an issue again this year, lets hope we are done with the sharp increases. We know there will be an increase next year because of the replacement of the school heating plant, which was an approved bond issue in March but was too late to make our 2011 tax bills.

Aquatic Invasive Species {AIS} are a new threat that could have a real impact on Burntside. As of now we are an infested lake with the finding of the Spiny Water flea last year. We need to work on educating the public along with doing inspections at our landings. Several people in our membership have volunteered to do inspections at our access points, but **we need more members to help out plus get an organizer that will schedule the inspections and relay the information to the DNR.** The DNR is offering courses on inspection procedures and hopefully more will want to become involved.

The Minnesota DNR is not actively working on the Shoreline and Dock rules that were in the proposal stages for the last few years at the direction of the Minnesota Legislature. Those mandates from the legislature expired at the end of 2010, and there seems to be little movement to proceed with new evaluations of these rules at this time. We will keep you posted on those issues.

We have been able to piece together the Ice Out dates for Burntside Lake dating back to 1940, with a generous response from a variety of members. We are only missing 7 years now, {1942, 59, 65, 66, 67, 68 and 69}, after starting with 19 years missing.

Hopefully our guest speakers at our annual meeting will be of interest to you. They are going to talk about what is happening to our moose population here in Minnesota, more specifically our Arrowhead Region. They have been in Ely earlier this year to talk but attendance was low; we are hoping for a good turn out for them on August 6<sup>th</sup>.

We are also working on our membership list to note which areas of the lake our members are located, such as "west arm", "east arm", "island/water access" etc. If you want you may contact us via e-mail with your general location. We did get a listing from the 911 offices for island and water access people.

Our previous leaders developed the Burntside Land Use Plan, to assure the codes are understood and respected. Owners and their guests should concern themselves with how noise, bright lights, and anchored platforms might affect others. Please practice the Golden Rule while you enjoy your summer on Burntside Lake.

**Web Site:** <http://burntside.org/>

**Blog site address:** [http://groups.yahoo.com/group/burntside\\_poa/](http://groups.yahoo.com/group/burntside_poa/)

**See instructions in Newsletter**

**Please plan to attend the Burntside Property Owners' Association**

2011 Annual Meeting

Place: Theater at the Vermilion Community College

1933 East Camp Street

Ely, MN 55731-1918

(218) 365-6309

Date: **Saturday, August 6, 2011**

Time: Coffee, etc. 8:30 AM

**Meeting 9:30 AM**

Special Subject: What is going on with our Moose? plus information on Aquatic Invasive Species



**Property Management**

**Lakeshore Vacation Rentals**

**Cabin Repairs & Maintenance**

**Consulting Services**

**Sales & Development**

1323 East Sheridan St. Ely, MN 55731

[www.elylodging.com](http://www.elylodging.com)

888-365-4956

John Swenson - Broker

**BOREAL WOODWORKING**



*Fine homes, cabinetry & furniture*

*Michael Dietzman, Owner*

MN LICENSE #20382066

**BOREALWOODWORKING.COM**

CELL 218.343.9411 / PHONE & FAX 218.365.5009

P.O. BOX 465, ELY, MINNESOTA 55731

*"Always By Your Side"*

**Klun Law**

Serving Burntside Lake since 1979

Real Estate: Buying, Selling & Developing • Cabin Succession Planning

Attorneys Kelly Klun, Rae Bentz, Amber Pederson



1 E. Chapman St.

P.O. Box 240

Ely, MN 55731

218.365.3221

Fax: 218.365.5866

Toll Free: 1.877.365.3221

[www.klunlaw.com](http://www.klunlaw.com)

**Buoy Placement on Burntside**

We have a new contractor placing the Buoys on the lake. They are very responsive and interested in correctly doing the placements.

Vermilion Barging Inc

Lauren & Sheri Sawatzky

2750 W. Wakemup Village Road

Cook, MN 55723

218-666-5512

[Bubba@accessmn.com](mailto:Bubba@accessmn.com)

Assisting Lauren and Sherri;

Bud and Irene Van Deusen

Van Air

PO Box 357

Tower, MN 55790

218-753-2331

[vanair@rangenet.com](mailto:vanair@rangenet.com)

Or call Sheriff's Office if Buoys are missing.

Sheriff of St. Louis County

- Dave Phillips 218-726-2339

- Dirk Davis, Sergeant. in Virginia 218-749-7172



**ATTN: BURNTSIDE LAKE  
PROPERTY OWNERS:**

If your water access only property is in need if septic or outhouse pumping, we are working with a local septic contractor to have his barge on the lake this fall.

We now have a list of water access people to remind you of these operations.

If you are interested please contact  
Reynold Mack, President,  
Burntside Property Owners Assoc.

651-429-0174, 218-365-3331

## Information on Waste Disposal and Recycling in the Ely Area

Information on Waste Disposal and Recycling in the Ely Area

Are you like me, always wondering what the hours of operation are when you want to dispose of trash or recyclables? You load up the truck or car only to find they are closed or will be closed in a few minutes. Here is something that might be of help when you are out at the lake. Remember you can also buy garbage tags in town, so you can put garbage out for pick-up at your location. They have various levels, but typically we get tags for 15 pound bags {rural} that you stick on the individual garbage bags that weigh approximately 15 pounds. Please try to place your bags or cans with the bags in them out the morning of your pick-up day to avoid animal raids.

Trash and Garbage - Northwoods Solid Waste Transfer Station  
9384 CR-21, Babbitt, MN. {9.6 miles south of Ely} (218) 365-3895  
M, Th, F, Sa: 8am—3pm

Tu: 9:30 am—3pm

Wed: Noon—6pm (April 15 – Sept 30) during summer

Wed: 11am—5pm (Oct 1 – April 14) during winter

They will accept these waste items for free:

antifreeze, appliances 2/trip, auto batteries, brush, fluorescent light tubes {up to 4 foot} or Compact Fluorescent Lights {CFL} 4 per trip, motor oil, drained oil filters {6/trip}, scrap metals, used tires up to 24" {4/trip}, mixed paper, mixed cans and bottles, cardboard, yard waste.

The following waste items are accepted for a fee: demolition materials, garbage, mattress/box springs, TVs and computer monitors. Items not accepted at this site are Household Hazardous Wastes. Here are the summary web sites for St. Louis County:

<http://www.stlouiscountymn.gov/LANDPROPERTY/GarbageRecycling.aspx>

Hazardous waste sites are listed under another heading: <http://www.stlouiscountymn.gov/LANDPROPERTY/GarbageRecycling/HazardousWaste.aspx>

Ely Area Recycle Center <http://www.ely.mn.us/>  
446 W. Sheridan, Ely {Approximately}

Hours of Operation

Sunday and Tuesday - Closed

Monday and Friday 7 am to 3 pm

Wednesday and Thursday 10 am to 6 pm

Saturday 7 am to 12 noon

Area will be closed when bins are full

Brush and mulch accepted from City of Ely residents only.

Check out the City of Ely Web Site.

We found one site in Ely that recycles plastic bags, Zups Grocery store while Piragis Northwoods Co. is always looking for clean packing materials {i.e., peanuts, bubble wrap, or any other packing they can use}.

For more information about recycling and waste disposal in St. Louis County go to: [www.stlouiscounty.org/recycle](http://www.stlouiscounty.org/recycle) or call 1-800-450-9278



Famous for Quality  
**MEATS,  
GROCERIES,  
HOT & COLD DELI,  
& HOME MADE  
SAUSAGES**

[www.zups.com](http://www.zups.com)

303 E. Sheridan St. • Ely • 365-3188



1325 E. Sheridan St. Ely, MN  
**218-365-3665**

**REAL ESTATE SALES**

#3314 - **Burntside Home** - 5 level home with 4 bedrooms, 3 baths and 2,800' of living space. Almost 3 acres with +-320' of shoreline and a lakeside sauna. **\$995,000**

#3255 - **Burntside Cabin** - Cabin sits at the waters edge with 160' of shoreline. Northwoods lot covered with ledgerrock and enormous White Pine trees. **\$355,000**

**[www.elywildwoods.com](http://www.elywildwoods.com)**



**Mat Roderick - CEO**  
[mat@elyconstruction.com](mailto:mat@elyconstruction.com) OFFICE: 218.365.2575  
955 E Sheridan St. FAX: 218.365.6575  
Ely, MN 55731 CELL: 218.235.1030

**WWW.ELYCONSTRUCTION.COM**

**all Day BUILDERS**

**Josh Day**  
☎ 218 365 3500  
☎ 218 365 3503  
[alldayllc@gmail.com](mailto:alldayllc@gmail.com)  
205 North Central Avenue  
Ely, Minnesota 55731

**DAY BROTHERS BARGING**  
COMPLETE PORTABLE BARGING SERVICES  
"Floating Above The Soil."

Phone: 218.365.5474 P.O. BOX 341  
Fax: 218.365.6495 Ely, MN 55731

## Charitable Contributions

Most years we have a small amount of funds left over at the end of the year that we typically donate to the local community. So this past year we donated \$800 to various programs or groups that are of assistance to the Burntside Lake Property Owners. We are happy to report that we donated \$200 to the Ely Public Schools to help with their wish list. Our East Arm representative, Pam Freeman, was instrumental in finding out the most pending needs of the school. We also donated \$200 to the First Responders who are always there when we need them, but hopefully we don't need them very often; \$200 to the Ely Public Library who is there as a resource to our members, and \$200 to the Igloo Snowmobile Club, who marks the trails on Burntside so everyone can travel on the ice in a safe manner. Thanks to all for these great services, hopefully our small contribution will be of assistance to them. We are open to suggestions as to other organizations. Please let us know via US mail or e-mail if you have any suggestions, which is how we came up with the Ely Public Library. Another suggestion is that we drop off our unopened non-perishable food items at the food shelf in Ely when we are closing up for the summer. Most of the time we don't have enough room to haul it back home and usually have to find someplace store it until we can come back for the summer, just an idea to consider.



1230 E. Sheridan St.  
Ely

**365-3216**

- Groceries • Meats
- Homemade Sausage • Broasted Chicken
- Bakery • Deli

HEARTH  
SIDE  
CORNER



**Your Full Service Fireplace Shop**

*-Free Estimates -Friendly Service*

1203 East Sheridan St.  
Ely, MN 55731  
(218) 365 5013

Fax : 365-5028  
hearthsidecorner@citlink.net  
www.hearthsidecorner.com

**Showroom Hours: Mon.-Sat. 10a.m.-5p.m.**  
Owners: Mark & Donna Blanchfield



**Spirit of the Wilderness**  
*Outfitting Your Needs*

**Canoe Rentals - Outfitting - Bait & Tackle  
Outdoor Gear & Apparel**

800-950-2709  
2030 E Sheridan St Ely, MN 55731  
www.elycanoetrips.com

Custom handcrafted,  
handcarved wood doors,  
and furnishings.

**Huisman Concepts, Inc.**

2027 Haapala Road  
Ely, Minnesota  
218-365-4699

[www.huismanconcepts.com](http://www.huismanconcepts.com)

*A complete design  
and construction company*

John Huisman  
2027 Haapala Road  
Ely, MN 55731  
218-365-4699



**Huisman Concepts, Inc.**

[www.huismanconcepts.com](http://www.huismanconcepts.com)

**Jimmy Z's Sales**



**Authorized  
Dealer**

Email: [zup@frontiernet.net](mailto:zup@frontiernet.net)  
[www.jimmyzsales.com](http://www.jimmyzsales.com)

**Free Estimates  
Free Installations**

Toll Free: (866) NEW DOCK  
Office: (218) 827-8400  
Home: (218) 827-2478  
Cell: (218) 343-4278  
Fax: (218) 827-2148

▪ Snowmobile/ATV Trailers ▪ Docks ▪ Boat Lifts



**BURNTSIDE BARGE SERVICE**  
LOADS TOO LARGE OR MESSY FOR  
YOUR PERSONAL WATERCRAFT

MIKE LOISEL

BURNTSIDE LAKE

218-365-6171 SUMMERS  
952-933-4275 WINTERS

[MIKELOISEL@GMAIL.COM](mailto:MIKELOISEL@GMAIL.COM)

*Burntside Lodge*



365-3894

unique gifts • fine wines  
lakeside dining • outstanding cuisine  
large selection of burntside apparel

# Information on Burntside Lake for 2010

## Annual Lake Level Report

**Lake: Burntside**  
**St. Louis County**  
**ID No. 69011800**

### Water Level Data

Period of record: 09/13/1939 to 11/22/2010

# of readings: 673

Highest recorded: 1374.83 ft (09/29/1948)

Lowest recorded: 1370.07 ft (10/26/1997)

Recorded range: 4.76 ft

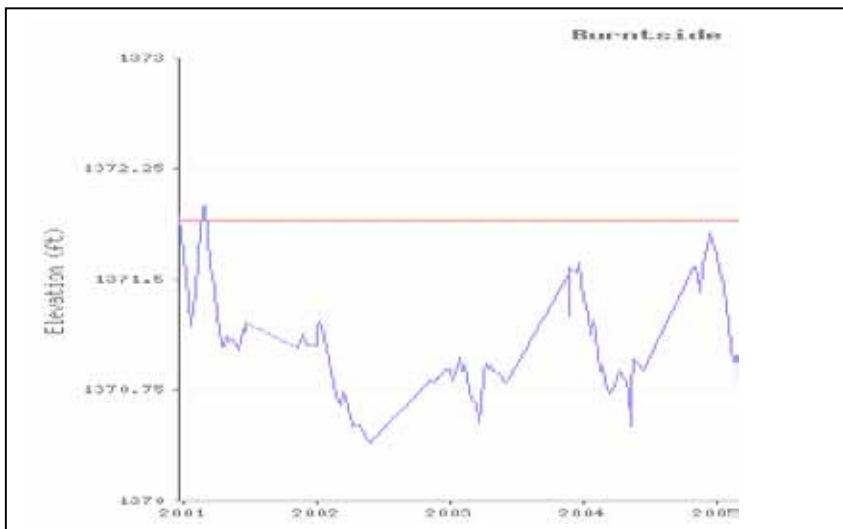
Last reading: 1370.77 ft (11/22/2010)

Ordinary High Water Level (OHW)

elevation: 1371.9 ft

Datum: NGVD 29 (ft)

We were about 0.7 inch from our all time low, at the end of last year

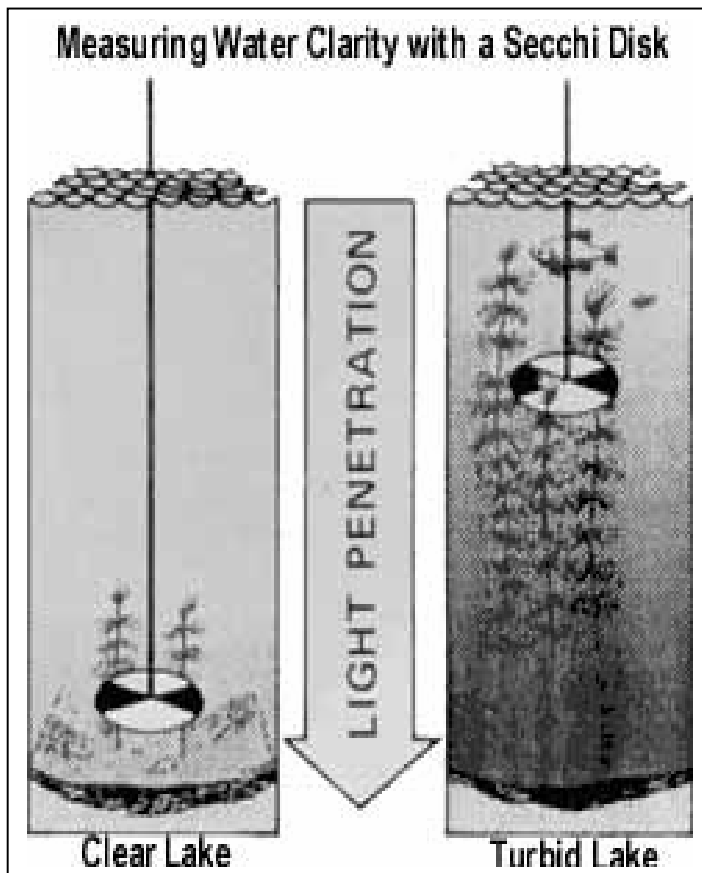


### The Savvy Secchi

#### History

For all its simplicity, the Secchi Disk is the most economical, quickest, easiest and most widely used tool to measure water quality. It may even be the oldest monitoring tool still being used. It dates back to 1865 when Fr. Pietro Angelo Secchi was asked by Commander Cialdi, head of the Papal Navy, to measure transparency in the Mediterranean Sea. Fr. Secchi was an astrophysicist and scientific advisor to the Pope. Since 1865 various sizes and colors have been used. The two most commonly used variations are an all-white metal disk and a disk painted in black and white quadrants. The Minnesota Pollution Control Agency (MPCA) uses an all-white, 8-inch diameter notched metal disk. The notched sides are for rope storage when the disk is not in use. The attached waterproof rope is marked in meters or feet for easier reading

Year	Feet	Year	Feet	Year	Feet	Year	Feet
1987	20.6	1993	20.3	1999	19.1	2005	23.0
1988	21.4	1994	17.8	2000	20.1	2006	25.0
1989	20.1	1995	19.8	2001	18.7	2007	21.0
1990	21.4	1996	19.3	2002	20.0	2008	21.0
1991	21.4	1997	19.7	2003	25.5	2009	19.7
1992	23.6	1998	21.1	2004	23.0	2010	20.3



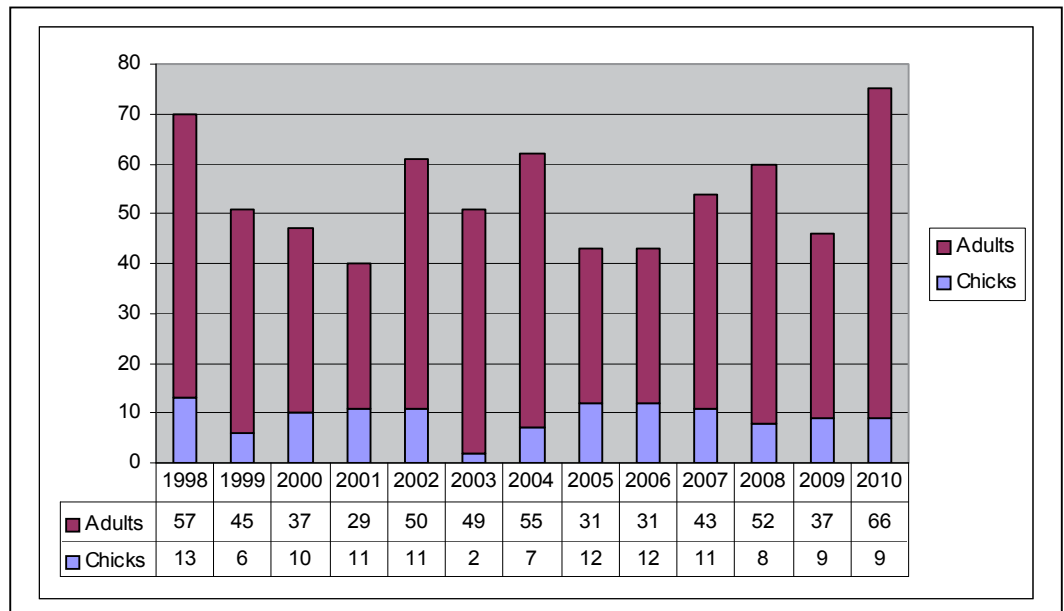
We checked with the MPCA this year since Burntside Lake was scheduled for detailed testing but it is past due {they test every 10 years). They now have us scheduled for testing in 2014.

## 2010 Loon Count

During the 1996 annual meeting of the Burntside Property Owners' Assoc. a new member asked if the number of loons on the lake were increasing or decreasing. After a number of conflicting opinions were rendered, it was suggested that we should count the loons on the lake. The idea met with unanimous enthusiasm and we organized quickly by segmenting the lake into sections. Volunteers were

assigned an area of the lake and the teams agreed to rendezvous at Burntside Lodge late in the afternoon to record their results. Since then, we have conducted our annual loon count the afternoon of the annual meeting under the able leadership of "Head Loon Counter" Tim Riley. We now have 14 years of loon count data with the last 12 years presented in chart above for your interest. The count for 2010 was 66 adult loons and 9 chicks. At the conclusion of this year's annual meeting Tim Riley will ask for volunteers to assemble and each team will be assigned a section of the lake. The 15th Burntside Lake Loon Count will be conducted the afternoon of August 6<sup>th</sup> after our annual meeting.

## Burntside Lake Loon Counts



## Ice Out Dates

We have been busy collecting Ice Out Dates for Burntside Lake since last year when the ice went out so early, and everyone was saying that was a record for Burntside. Unfortunately no one person had a complete record of the data. So last year we asked if anyone had a listing of Ice Out Dates, and we were able to find data that was listed in cabin log books and boat houses and resorts records. We are now left with just 7 years that are missing between 1940 and the present. The years missing are 1942, 1959, 1965, 1966, 1967, 1968 and 1969. We know the Ice Out Dates for Shagawa and Vermilion for these years so we have a fairly narrow time period to use. 1942 S= 4/23, V= 4/24; 1959 V=5/1; 1965 S&V=5/5; 1966, S=5/14, V=5/15, 1967 S=4/18, V=4/20; 1968 S=4/29, V=5/2; 1969 S=4/25, V=4/25. Unless we hear something else we'll put in an estimated number based on Shagawa and Vermilion Lakes. The data will be posted on our web site and our blog site in the form of an Excel Spreadsheet for your reference. Thanks to all that provided information to us.



**Sunrise**  
**Cabin Care & Construction**

- New Construction • Renovations and Remodels
- Custom Woodworking • Finish Carpentry
- Cabin Caretaking & Maintenance

**Drew Shock (218) 365-2147 Ely, MN**  
Experienced • Licensed • Insured  
License # 20497400 [www.efysunrise.com](http://www.efysunrise.com)



**Joe's Marine & Repair, Inc.**

JOHNSON • LUND • STIHL • ARIENS

25 W. CHAPMAN ST. • ELY, MN 55731  
(218) 365-6264

## What is going on with our Moose?

We have had many questions concerning one of our local icons of the northwoods. What is happening to the Moose in our area? We used to see them every once in a while during the year but it seems that these sightings are becoming less and less common. There is work being done by the Natural Resources Research Institute Center for Water and Environment at the University of Minnesota Duluth and the Minnesota Department of Natural Resources. At present the largest moose research project ever conducted in Minnesota has begun. Moose have been fitted with radio collars across the Arrowhead of northeast Minnesota and into Ontario. UMD biologist Dr. Ron Moen at NRRI is playing a key role in the project.

As you might recall moose in the northwestern half of the state had all but disappeared in the 1990s, and there was a concern about a similar population decline in northeastern Minnesota. Although aerial surveys of moose in the northeast seemed to indicate a stable population, other signs were troubling.

A study by Mark Lenarz, Minnesota Department of Natural Resources, found mortality rates much higher than expected in adult moose. Some of these moose died in the summer even though they were in good physical condition. The cause of death could not be explained for many of these moose mortalities.

Dr. Moen said “We needed a way to keep track of moose to understand why this might be happening, and it just wasn’t possible to fly over radio collared moose for several hours every day.” The solution was to deploy GPS satellite collars on moose that record locations every 20 minutes, store activity and temperature data, and have a mortality sensor to indicate if an animal has died. Most importantly, the collars send location information by satellite daily.

In January, 63 moose were tranquilized from a helicopter. A GPS satellite collar was fitted on each moose, blood was collected, pellet and hair samples taken, and winter ticks were collected, if present. Body fat was measured on some moose with an ultrasound machine. After about 30 minutes the tranquilizer was reversed and the moose wandered off.

The collared moose are on public and private land, in protected areas and managed forests, and in warm and cold parts of Minnesota. Moose in Voyageurs National Park or Quetico Provincial Park have different forage available to them, compared to moose in county, state, and federal forests. Moose in Grand Portage and along the Gunflint Trail have cooler

summer temperatures than moose near International Falls. “Each collar collects GPS location, activity, and temperature data at the same time,” Moen explained. “By synthesizing data, we will identify common characteristics of moose home ranges. We’ll know what habitats they need to survive, the availability of food, cover, and water, and how they respond to very hot and very cold temperatures. And when moose die, we’ll try to get to the carcass within 24 hours for our DNR cooperators.”

The overall project consists of four separate projects with a common research methodology (see map). The Voyageurs National Park project is funded by the National Park Service and the U.S. Geological Survey. The Grand Portage project is funded by the Fish and Wildlife Service. The Environment and Natural Resources Trust Fund supports the project from Whyte to Grand Marais, and the Ontario Ministry of Natural Resources supports the project in Quetico Provincial Park.

Research cooperators working with UMD include the Minnesota Department of Natural Resources, U.S. Geological Survey, National Park Service, U.S. Fish and Wildlife Service, Ontario Ministry of Natural Resources, 1854 Treaty Authority, Grand Portage Indian Reservation, and the Fond du Lac Band Resource Management Division. For more information visit [www.nrri.umn.edu/moose](http://www.nrri.umn.edu/moose).

Written by Ron Moen, NRRI.

We are planning on a presentation of information on the status of Moose in the Arrowhead region by Dr. Ron Moen and Dr. Erika Butler at our annual meeting. It should be interesting and they hopefully can provide us with more details. These presentations occurred in Ely earlier in the year but attendance was low, so hopefully we can have a larger crowd at our annual meeting this August 6th at the VCC Theater.

Hardwood Laminate		Tile Vinyl
<p>Hunter Douglas Window Treatments Allan Eckman - President Brenda Eckman - Vice President</p>		
114 E. Chapman Street Ely, MN 55731		(218) 365-6433 FAX: (218) 365-2495

## The latest on rules from the Minnesota Department of Natural Resources.

The first and most important new law:

### **Aquatic Invasive Species Prevention Legislation Summary**

Laws of Minnesota 2011, Chapter 107

**Prepared by: Minnesota Department of Natural Resources**

**May 31<sup>st</sup>, 2011**

**Effective 5-28-2011, unless otherwise noted**

(Service Provider Permit, AIS Watercraft Rules Decal Effective 7-1-2011)

This is a summary of how the new laws related to prevention and management of aquatic invasive species (AIS) will apply to boaters, property owners, service providers, bait dealers and others involved with the transportation of water-related equipment.

**Water-related equipment** – means a motor vehicle, boat, watercraft, dock, boat lift, raft, vessel, trailer, tool, implement, device, or any other associated equipment or container, including but not limited to portable bait containers, live wells, ballast tanks (except those with a MPCA permit), bilge areas, and water-hauling equipment that is capable of containing or transporting AIS, aquatic macrophytes (plants), or water. This definition replaces and expands previous references to watercraft, trailers, plant harvesting equipment, and portable bait containers.

### **Inspections**

- Compliance with AIS inspection requirements is an express condition of operating or transporting water-related equipment.
- Conservation Officers or Licensed Peace Officers may set up check stations at or near water access sites.
- Authorized inspectors can visually and tactilely inspect water related equipment.
- Inspections include the removal, drainage, decontamination, or treatment to prevent the transportation and spread of AIS, aquatic macrophytes, and water.
- Protocols for decontamination of water-related equipment will be developed utilizing recommendations outlined in the legislation.
- Authorized inspectors may prohibit the launching or operation of water-related equipment if a person refuses to allow an inspection or does not remove and dispose of AIS, aquatic macrophytes (plants), and water.
- Refusing to allow an inspection or follow a removal order may result in a civil citation and a one year suspension of the watercraft license.

### **Boating**

- All water-related equipment must be drained before leaving any waterbody. This includes portable bait containers.
- Transportation of aquatic macrophytes (plants) on all roads is prohibited unless specifically exempted. Current law only prohibits transportation on public roads.
- The changes allow for a criminal citation option for violations involving the transportation of aquatic macrophytes (plants), water and non-compliance with drain plug removal.
- Emergency response vehicles and equipment may be transported on a public road with the drain plug or other similar device replaced only after all water has been drained from the equipment upon leaving the water body.
- Watercraft owners or operators must obtain an AIS decal issued by the DNR and display the decal on the watercraft prior to launching, on, entering into, or operating on any waters of the state. After August 1, 2014, failure to display the required rules decal may result in a citation for a petty misdemeanor.

### **Property Owners**

- Docks, boat lifts, and other water-related equipment that are removed from infested waters and placed on the riparian property on a seasonal basis or for short-term maintenance purposes can be returned to the same waters.

### **Service Providers**

- Service providers are individuals or businesses hired to install or remove water-related equipment or structures from waters of the state.
- Service providers must obtain a permit from DNR before providing any services and must have a valid permit in possession while providing services.
- Service providers must complete invasive species training and pass an examination in order to qualify for a permit. Permits are valid for 3 years.
- Persons working for service providers that have a permit are required to complete DNR aquatic invasive species training.

### **Bait Harvesting**

- Annual AIS training is required from DNR before receiving a bait harvest permit for working in infested waters or working for a permittee.
- Equipment authorized for minnow harvest in a designated infested water may not be transported to or used in any other waters unless specifically authorized by a permit.
- Anyone, including the DNR, that harvests aquatic life from waters of the state for the purpose of transporting and stocking is required to bring the aquatic life to a holding facility for a minimum of ten hours and to examine for the presence of invasive species.

### **For More Information Contact:**

Luke Skinner, Supervisor Major Rodmen Smith, Operations Manager  
 Invasive Species Program MNDNR, Division of Enforcement  
 MNDNR, Ecological and Water Resources Division 500 Lafayette Road, St. Paul, MN 55155  
 500 Lafayette Road, St. Paul, MN 55155 651-259-5054  
 651-259-5140 rodmen.smith@state.mn.us  
[Luke.skinner@state.mn.us](mailto:Luke.skinner@state.mn.us)

Check out the Aquatic Invasive Species Video and summary information on the Minnesota Department of Natural Resource site: <http://www.dnr.state.mn.us/index.html>

Go to the first box in the center of the page and look at New Aquatic Invasive Species Laws, and watch the video plus review at the new laws.

### **Update on Dock and Shoreline Rules**

As you may remember, last year we were waiting on new and updated rules concerning docks, and a separate rule for Shoreline Rules and requirements. If you remember:

At the direction of the 2008 MN Legislature, the DNR initiated a public process to draft revisions to the rules that regulate structures in public waters {**mostly docks**}, which include most of Minnesota's lakes, rivers, and many wetlands. In August 2010 Governor Pawlenty returned the draft rules to the DNR without approval and recommended that the 2011 Legislature and the DNR work together in reconsidering this matter. At this time the legislature has not acted on this matter.

Similarly the, "Draft Shoreland Rules", did not receive approval by the Governor. On August 11th Governor Tim Pawlenty returned the draft shoreland conservation rules to the DNR for further engagement and discussion, especially with the 2011 Legislature. As with the structures in public waters, the 2011 legislature has not acted and there is no indication as to when these rules will be updated. Stay tuned for updates, but if you are interested you can go on line to see the progress and request updates. The web sites are as follows: **For the structure rules {docks}**:

[http://www.dnr.state.mn.us/waters/watermgmt\\_section/pwpermits/structures\\_rules.html](http://www.dnr.state.mn.us/waters/watermgmt_section/pwpermits/structures_rules.html)

and then for the **Shoreline Rules**:

[http://www.dnr.state.mn.us/waters/watermgmt\\_section/shoreland/shoreland\\_rules\\_update\\_project.html](http://www.dnr.state.mn.us/waters/watermgmt_section/shoreland/shoreland_rules_update_project.html)

### **The DNR has a new Mobile App for your Smart Phones.**

Just search for Minnesota DNR in the your APP Market Place and download MN DNR Lake Finder and you can get lake information on the go. They have thousands of lake surveys, depth maps, and vegetation reports, plus water quality and clarity data literally in the palm of your hand. It will also give you information if the lake is AIS infested. You can look up your lake on the computer also at

<http://www.dnr.state.mn.us/lakefind/index.html>, enter Burntside when it asks for your lake.

## BPOA Blog Site Instructions

This will keep it simple for all of us –

1.) For those who want only to take part in email, send a blank email to [burntside\\_poa-subscribe@yahoo.com](mailto:burntside_poa-subscribe@yahoo.com)

Once you're subscribed and have been approved, you can send messages to the group by emailing them to [burntside\\_poa@yahoo.com](mailto:burntside_poa@yahoo.com)

That is pretty much it.

2.) If you would like to do more than be on the mailing list, like share pictures and files, go to [http://groups.yahoo.com/group/burntside\\_poa/](http://groups.yahoo.com/group/burntside_poa/) and click "Join Group". Create an account, or if you already have a Yahoo account, log in and use that. And once you're approved you're all set.

The approval happens after you have taken either of the above actions, I {Bryan} will go into the site and put the approval through. The approval process is only meant to keep the blog site exclusive to BPOA.

3.) Exploring the options as a member is actually fun and interesting. Use as much or as little as you wish. It has been a learning process for me too. All pertinent information that board members have to communicate with BPOA will be posted there, for everyone to use. The board isn't responsible for monitoring questions nor should they be expected to know everything. With this forum, all forum members will be able to feed off of each other and hopefully get various questions answered. Board meeting notes and annual meeting notes can be posted here as well. Documents could be kept on the site for extended periods of time, and can be posted in the "Files" section. Water quality, maps, articles on regulations for lakeshore and building permits, etc. are possibilities. Explore it and see how to make it work for you.

Bryan Stenlund M.S./L.P.



**Tim's Truck and Auto, Inc.**  
*Import & Domestic Auto and Truck Repair*  
 Fuel Injection & Computer Diagnostics

- Tune-Ups • Brakes • Clutch Work • Electrical •
- Air Conditioning • Tire Sales & Repair •



46 West Camp Street  
 Ely, Minnesota 55731  
 (218) 365-3291 • Cell: 218-235-8465

Landscaping      Sand & Gravel      Rooter Service

**Walsh Sewer & Septic Systems Co.**

Installation Septic Tank Pumping  
 Road Repair Service  
 Back Hoe & Dozer Work  
 Free Estimates  
 Sewer Line Video Camera

218-365-4041 • 218-343-1231  
 Licensed • Bonded • Insured  
 Lic #1586  
 Plumbing Needs

**JIM WALSH**  
 P.O. Box 68  
 13964 Lauder Blvd.  
 Winton, MN 55796

## Volunteers can help protect the future of Minnesota's loon population

(Released June 2, 2011)

A statewide study is being conducted by the Minnesota Department of Natural Resources (DNR) to help ensure the continued health of Minnesota's state bird, the common loon. Boaters, anglers and lakeshore owners are being asked to pick up dead loons for testing to help biologists discover the major causes of death.

Minnesota's loon population is about 12,000 birds, and the numbers appear stable, according to Pam Perry, DNR nongame wildlife specialist and the loon watcher coordinator.

"Past studies on the common loon were limited to looking for mercury contamination," said Perry. "This effort will help answer questions about why loons die. Is it trauma, mercury, lead, disease or effects from the Gulf oil spill?"

If some of these causes are preventable, the DNR can develop strategies to reduce loon mortality.

The DNR is asking for help in collecting recently dead loons without signs of decomposition. Obviously, rotten loons should not be collected.

To collect a specimen for testing, people should use disposable gloves to put the dead loon in a plastic bag. Try to avoid barehanded contact when handling dead animals. If gloves are not available, turn a plastic shopping bag inside out and scoop up the specimen with the bag. Place the specimen in a freezer as soon as possible. If a freezer is not available, place the specimen in a cooler, surrounded by ice.

It is important to deliver the specimen as soon as possible to a local DNR office, because it is otherwise unlawful to possess loons. All loons need to be labeled with the date, name of the county, lake and nearest town where it was found, along with name, address and telephone number of the person who found the loons.

More information about general guidelines for safe handling of wild birds is available online.

For more information or to locate the DNR office, call the DNR Information Center at 651-296-6157 or toll-free at 888-646-6367.

Some history about Burntside

Mayor Pattison's Outing

Duluth News Tribune, Thursday, July 23, 1896  
Provided by Connie Ahola Loisel

Mayor Pattison of Superior will go to Burntside Lake today on his annual summer outing at that place, where he owns a commodious and splendidly furnished lodge. He will be accompanied by his family, and they will have many guests during the next few weeks, among whom will be E. E. Barton and family, Frank A. Flower of Superior; President Greatsinger, and Captain Sellwood and family, and William Craig, of Duluth. Mayor Patison has just sent two new electric launches to the lake, in addition to several boats which are already there. Frank A. Flower went to Burntside Lake yesterday, first providing himself with ammunition and fishing tackle and other accessories of an outing experience.



Commercial  
Residential  
Industrial

Call us for all your electrical needs!  
**Tim and Monica Cunningham - Master Electricians**  
13445 Villa Rd. Ely, MN 55731  
**(218) 365-6301**  
Licensed - Bonded - Insured

OUR BAIT IS GUARANTEED TO CATCH FISH OR DIE TRYING



Phone: 218-365-5358  
Fax: 218-365-8900  
1810 E. Sheridan St.  
Ely, MN 55731



1550 E. Washington St.  
(218) 365-2493  
studionorthelymn.com

24-Hour Weight Room  
Daily • Weekly • Monthly Memberships  
Single, Family & Corporate Memberships  
Fitness Classes Now In Session.  
Walk-ins Welcome!  
Insurance Discounts

VISITORS AND  
RESIDENTS  
WELCOME

• free weights • cable machines •  
cardio machines • indoor track •  
locker room & showers • sauna •  
tanning salon • personal training  
• 30-minute circuit • birthday  
parties • fitness & dance classes

## Update on Long Island

We talked with John Pierce at the Forest Service Office here in Ely about the status of Long Island. If you recall from last year, Long Island was sold to the Forest Service by the Trust for Public Land in 2010 to become part of the Superior National Forest. As we understand the Forest Service is planning on going out and evaluating existing camp sites that have been used in the past on Long Island to see if these could be designated as camp sites with fire-grates, and latrines with the possible option of a picnic table and a level area for a tent area. Once they determine these areas, the Forest Service will proceed with further evaluations and notifications per the requirements of the National Environmental Policy Act {NEPA}. As you may know the NEPA process consists of an evaluation of the environmental effects of a federal undertaking including its alternatives. There are three levels of analysis: categorical exclusion determination; preparation of an environmental assessment/finding of no significant impact (EA/FONSI); and preparation of an environmental impact statement (EIS). It's likely that the level of analysis for the addition of designated campsites would be the categorical exclusion (CE), which still requires public input. If there are no significant issues brought forward by the public and there would be no impact to resources such as heritage resources and threatened and endangered species (TES), a decision memo available to the public would record what activities are implemented. This process involves a biologist, plant ecologist, recreation specialist, and heritage resources personnel. It also requires consultation and concurrence from the U.S. Fish and Wildlife Service regarding TES species, and as I mentioned earlier, they routinely consult with Bois Forte, the 1854 Treaty Authority, and the MN Dept. Of Natural Resources. Anyone that is familiar with Long Island would be of help to the Forest Service in their evaluations. You may contact John Pierce at (218) 365-7606.

### VERMILION TIMBER FURNITURE, LLC

[www.vermiliontimberfurniture.com](http://www.vermiliontimberfurniture.com)



Bill Lillibridge  
Redundant

5855 Echo Point Road  
Tower MN 55790  
USA

218-753-5070  
218-780-7900  
New Zealand 021-076-5684  
billilibrige@yahoo.com

### NORSHOR AGENCY INC.

YOUR INSURANCE STORE

DEB CAMPBELL  
AGENT

628 E. SHERIDAN ST  
ELY, MN 55731

Phone - 218-365-4665  
Fax - 218-365-2688  
debcamp63@msn.com  
License No. 20014480



[www.elywoodwizardsllc.com](http://www.elywoodwizardsllc.com)

**365-5311**  
Lic# 20270430

## CAMP VAN VAC

A LAKESIDE RESORT

**Sauna Fishing Campfire Canoes**  
Romantic log and stone housekeeping cabins  
on Burntside Lake. Summer rates from  
\$440-\$1400 a week. Spring and fall discounts.

**Fun Boats Blueberries Serenity**  
218-365-3782 [www.campvanvac.com](http://www.campvanvac.com)

## Burntside Property Owners Association Info. Web Site links of Interest

Our Web Site: <http://burntside.org/>

Blog Site: [http://groups.yahoo.com/group/burntside\\_poa/](http://groups.yahoo.com/group/burntside_poa/)

Minnesota Seasonal and Recreational Property Owners  
<http://www.msppo.org/>

Minnesota Waters  
<http://www.minnesotawaters.org/>

Listening Point Foundation:  
<http://www.listeningpointfoundation.org/>

Loon Watch Program  
<http://www.northland.edu/sigurd-olson-environmental-institute-loon-watch.htm>

North St. Louis County Soil & Water Conservation District  
{You can order trees for spring planting}  
<http://www.nslswcd.org/>

City of Ely  
<http://www.ely.mn.us/>  
Find hours for the Ely Recycling Center

St. Louis County for Waste Transfer Station  
<http://www.co-st-louis.mn.us/slcportal/LinkClick.aspx?fileticket=rgKy0TZe1j8%3d&tabid=160>  
{To get the hours for the Transfer Station}

DNR Proposed Rules web sites:

Shoreline Rules Web sites:

<http://mndnr.gov/waters/shoreland.html>

<http://www.dnr.state.mn.us/volunteer/mayjun10/shorelands.html>

Status of Proposed Dock Rules Web Site:

[http://www.dnr.state.mn.us/waters/watermgmt\\_section/pwpermits/structures\\_rules.html](http://www.dnr.state.mn.us/waters/watermgmt_section/pwpermits/structures_rules.html)

{See article in Newsletter on both rules}

DNR Public Waters Work Permit Program  
<http://www.dnr.state.mn.us/waters/index.html>

DNR Lake Finder Information on Burntside Lake  
<http://www.dnr.state.mn.us/index.html>  
{Go to Lake Finder and type in Burntside}

St. Louis County Property Records  
{You can search by Lake}  
<http://www.co-st-louis.mn.us/auditor/parcelinfo2005/default.aspx>

Open Burning Permit System from the DNR  
<http://www.dnr.state.mn.us/forestry/fire/questions.html>  
{See information on our web site and blog}

US Forest Service web site:  
<http://www.fs.fed.us/r9/forests/superior/>



501 E. Sheridan St. • 365-2100

• Full Service Salon • Gift Certificates Available  
• Tanning • Acrylic Nail Service



Timothy P. Riley, CFP®  
Certified Financial Planner

222 W Superior St. Ste 200  
Duluth, MN 55802  
218.723.2762  
218.723.2660 Fax  
800.777.8534 Toll Free  
[timothy.p.riley@wellsfargo.com](mailto:timothy.p.riley@wellsfargo.com)

THE PRIVATE BANK

## Defenbaugh Law Office WILLIAM E. DEFENBAUGH, JR.

Attorney at Law  
Certified Real Estate Specialist

107 East Camp St.  
P.O. Box 630  
Ely, MN 55731

Phone: (218) 365-4977  
Fax: (218) 365-6164  
[bill@defenbaughlaw.com](mailto:bill@defenbaughlaw.com)



ELY | 229 e sheridan . ely mn  
p | 218 365 0809  
VIRGINIA | 105 5th avenue n . virginia mn  
p | 218 741 5610  
e | [pebblespaco@gmail.com](mailto:pebblespaco@gmail.com)  
w | [www.pebblespaco.com](http://www.pebblespaco.com)

## Yearly Open Burning Permit that you can activate online or by phone

For your information you can get burning permits on line and avoid going into town to get a paper copy of a burning permit that you might not be able to use. The online permits cost \$5 for the entire year {*You can spend \$5 just driving to town once to get a burning permit*}, but they can cover more than one site if you do them all at the same time. You just have to call to activate the permit by its number. It is a recorded prompt.

All you need to do is go to <http://www.dnr.state.mn.us/permits/index.html> or just type in <http://www.dnr.state.mn.us/permits>, Pick burning permits and you get <http://www.dnr.state.mn.us/forestry/fire/questions.html>.

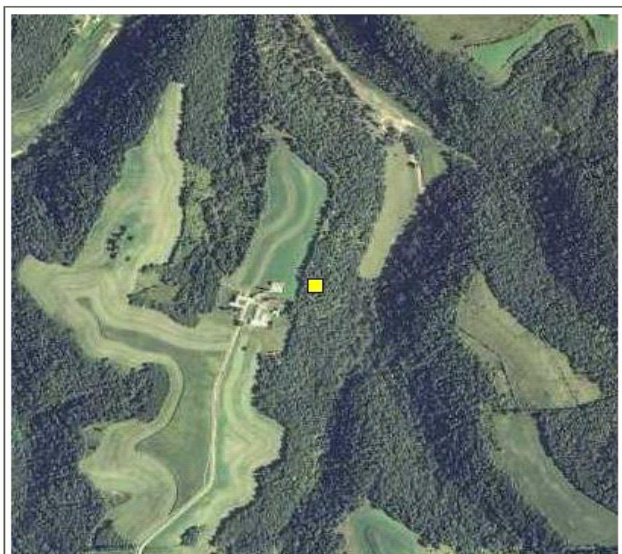
Click on "Apply for Burning Permit online" You get; "**Burn Permit Application**" with the following: **Determine if your burn site is covered by this process;**

To obtain a burning permit, we must know the location where you will be burning. {You should have this on one of your old burning permits.} To do this, please enter either the address {this doesn't seem to work as yet} where you want to burn or the legal description (township, section, range from your property tax statement) and click the appropriate search button.

*The system will then attempt to find the location on the map. The burn location will be marked by a yellow square. {See picture below} Zoom in on the yellow square to see if the location is correct. If the square is not where you will be burning, reposition your burn site by moving the point to the correct location. Do this by clicking the "move point" feature at the bottom of the map.*

**Note:** Once you see the map {like the one below} you'll need to zoom in to find the default location, which is the center of your section. You'll have to move the point by clicking on move location. {Warning, if you are not zoomed in far enough you will get an error message "Too far away to accurately relocate point. Please zoom in closer"} I think they added, "Please zoom in closer" because the first part didn't make sense as a stand-alone statement. .

Once you locate your burning location, you can add another burning location {i.e., Two separate pieces of property or one large piece of property that can have several burning locations.} under the same \$5 fee, but they will have a different permit number. All you have to do, once you register and get a permit, is to call in to activate the permit for that day. They reset every night {I think early morning} so when you want to activate again the slate will be clean. You can also activate on line if you have internet access at your site.



help full zoom in pan zoom out  
state

**move point**

**Burning Permits and Municipalities:** **Please note** that these open burning permits are valid for unincorporated areas of the state and within certain municipalities. You must determine if additional permissions or permits are required for your location, and if necessary, secure those permits or permissions

**Burntside Property Owners Association  
2010 Annual Membership Meeting  
Saturday August 6th, 2010 at Grand Ely Lodge, Ely MN**

Meeting called to order at 9:30 by President Reynold Mack  
Minutes from 2009 Annual Meeting approved as submitted by Tim Riley, Secretary.  
BPOA Annual Loon Count will take place this afternoon, weather permitting.  
Treasurer's Report was presented by Diedre Plude and approved with a \$4,526 balance. Diedre thanked businesses that placed BPOA newsletter advertisements and encouraged members to patronize these firms.

**Speakers**

Frances "Fitz" Fitzgerald representing Minnesota Land Trust, Shawn Hamilton representing Northwoods Initiative and Tom Evers employed by Trust for Public Lands discussed their respective private or public organizations and multi-departmental cooperation toward conserving public lands for future generations.

Jeff Forrester, MN Seasonal Property Owners Association, gave an overview of his organization's professional lobbying efforts funded by 501(c)4 contributions from members including BPOA.

**Old Business**

President Mack discussed state legislature having granted approval for Vermilion State Park near Tower MN and lack of financial resources to develop the property at this time.

**New Business**

Spiny Waterfleas are an invasive species that has found its way into Burntside Lake.

Ice Out records are being collected and data will be maintained by BPOA going forward. There are 20 years since 1940 where records are incomplete and ice out date information is still needed.

Independent School District 696 Ely MN discussed at their November/December meeting to submit a \$15.4mm bond issue to replace the school's heating system and to demolish Kennedy School building.

**BPOA Nominating Committee**

Reynold Mack, Tim Riley, Mike Loisel, and Ward Nelson comprise the current Nominating Committee charged with finding interested parties to serve on the BPOA Board.

Judy Rudman accepted a nomination as Central Representative and was elected by voice vote.

Reynold extended an invitation to anyone in the audience with an interest in serving as a board member to identify themselves or to come forward following the meeting.

**Newsletter**

Newsletter content was reviewed by President Mack. Reynold pleaded for newsletter articles and content contributions from all members.

**Financial Support and Contributions**

A discussion regarding intent for contributions from BPOA was presented to the membership. Candidate organizations included Ely Public Schools, First Responder's, and Igloo Snowmobile Club. Member Jeannie Tome suggested that Ely Public Library also be considered for a contribution.

**Door Prizes**

Hats, shirts, and a video cassette were given as door prizes to lucky individuals in the audience.

Meeting adjourned at 11:25 a.m. Minutes submitted by Tim Riley, Secretary.



**MATSON  
MOTORS**  
MARINE & SMALL ENGINE REPAIR  
2068 HIGHWAY 169 ELY, MN 55731  
**218-365-2555**  
**HONDA**  
E N G I N E S BOB MATSON/OWNER  
*Pick Up & Delivery*  
Snapper Lawn & Garden - Jonsered Chain Saws  
Rental Equipment

**Mike's Liquor Store**  
*The most complete wine selection in northern Minnesota*  
Beer, Microbrews, Liquors  
8:30 am - 10 pm Monday - Saturday  
email: [djdusich@frontiernet.net](mailto:djdusich@frontiernet.net)  
Dan & Jayne Dusich 365-5087

