



## BURNTSIDE PROPERTY OWNERS' ASSOCIATION

P.O. BOX 81 ELY, MINNESOTA 55731

Volume XVII, Summer 2010

### **BPOA BOARD**

#### **President**

Reynold Mack  
(651) 295-9877  
(218) 365-3331

#### **Vice President**

Philip Voxland  
(612) 724-2200  
(218) 365-5563

#### **Secretary**

Tim Riley  
(218) 525-6931  
(218) 349-7788

#### **Treasurer**

Diedre Plude  
(218) 349-3482

#### **East Arm Reps:**

Ward Nelson  
(218) 365-0556  
Pam Freeman  
(218) 365-7659

#### **North Arm Reps:**

Martha Gamble  
(218) 365-7158  
Corky Johnson  
(612) 554-2990

#### **West Arm Reps:**

Tim Sundquist  
(218) 365-4632  
(218) 724-4143  
Lee Lilya  
(218) 365-6896

#### **Central Reps:**

Mike Loisel  
(952) 933-4275  
(218) 365- 6171

#### **Island Reps:**

Bob Leininger  
(651) 484-2553  
David Bahnemann  
(651) 451-3845  
Melissa Buss  
(952)-925-9190  
Member at Large:  
Bryan Stenlund  
(218) 327-8937

### **From the President ...by Reynold Mack**

Well we made it through another winter and hopefully everyone is looking forward to enjoying the lake for another summer. We kind of got cheated out of summer most of last year.

As you well know our big issues last year were the tax situation on Burntside. One was the increase in evaluations on lake properties that ranged from 20 to over 100% in some cases. We did have a presentation from St. Louis County and the State of Minnesota at our annual meeting last year, so hopefully that explained how the evaluations were made. This year we are seeing numbers actually go down or stay close to the same for most of the lake. The other tax issue was the school bonding issue to pay for retiree medical benefits. The Ely School Board did listen to the public and found a way to reduce these costs while maintaining the Medical Insurance for the retirees.

We were also able to make arrangements with a contractor to have septic systems pumped at remote locations {water access properties}, this service will be available again this year if you didn't make arrangements to be pumped last year. Contact information is provided in the newsletter.

The upcoming issues for this year were the new dock and shoreline regulations from the Minnesota Department of Natural Resources. The new shoreline rules should be out when you receive this but the new dock rules have been delayed until next year. More information on these DNR items can be found in our newsletter.

Lastly, our annual meeting on August 7th, will be moving to the Grand Ely Lodge, due to construction activities at Vermilion Community College. Our speakers this year will be from "The Trust for Public Land" and "The Minnesota Land Trust". I believe this will be of interest to our lake residents as well as others. We have some articles on what we can actually do on these properties {Long Island} plus the Scientific and Natural Areas on the lake. Both of our presenters will be versed on these subjects and talk about them at our meeting. Again I have information in the newsletter on these items. We have also included an article on the Listening Point Foundation, which matches well with these types of land protection opportunities.

We are also asking for some help in our newsletter, the first item is any information on historical ice out dates for Burntside Lake. We have some data going back to 1940, which I have listed in the newsletter, and hopefully someone may have additional data. The second item is what type of recreational opportunities would you like to see on Long Island now that most of it is public land in the Superior National Forest. {See article in newsletter}. We are also requesting help on how we can help keep our lake clean.

Our previous leaders put into place the Burntside Land Use Plan, and codes are understood and respected. Owners and their guests should concern themselves with how noise, bright lights, and anchored platforms might affect others. The Golden Rule should be practiced. All is well on Burntside Lake.

Enjoy Burntside Lake and all its wonders!

**Web Site: <http://burntside.org/>**

**Blog site address: [http://groups.yahoo.com/group/burntside\\_poa/](http://groups.yahoo.com/group/burntside_poa/)**

**Please plan to attend the Burntside Property Owners' Association**

2010 Annual Meeting

Place: Grand Ely Lodge

400 N Pioneer Rd, Ely, Minnesota

Date: **Saturday, August 7, 2010**

Time: Coffee, etc. 8:30 AM

**Meeting 9:30 AM**

Special Subject: Public Trust Lands presented by "The Land for Public Trust" and "The Minnesota Land Trust", What's it all mean to us?

**BOREAL WOODWORKING**



*Fine homes, cabinetry & furniture*

*Michael Dietzman, Owner*

MN LICENSE #20382066

**BOREALWOODWORKING.COM**

CELL 218.343.9411 / PHONE & FAX 218.365.5009

P.O. BOX 465, ELY, MINNESOTA 55731

**KLUN LAW FIRM, P.A.**  
*A PROFESSIONAL ASSOCIATION*

**Kelly M. Klun**  
*Attorney at Law*

*kelly.klun@klunlaw.com*  
[www.KlunLaw.com](http://www.KlunLaw.com)



1 East Chapman Street  
Post Office Box 240  
Ely, MN 55731-0240  
(218) 365-3221 ext. 11  
Fax (218) 365-5866

**Toll Free 877-365-3221**

**ATTN: BURNTSIDE LAKE  
PROPERTY OWNERS:**

If your water access only property is in need of septic or outhouse pumping, we are working with a local septic contractor to have his truck on a barge this spring.

If you are interested please contact  
Reynold Mack, President,  
Burntside Property Owners Assoc.  
651-429-0174, 218-365-3331



**Property Management**  
**Lakeshore Vacation Rentals**  
**Cabin Repairs & Maintenance**  
**Consulting Services**  
**Sales & Development**

1323 East Sheridan St. Ely, MN 55731

[www.elylodging.com](http://www.elylodging.com)

888-365-4956

John Swenson - Broker



[www.zups.com](http://www.zups.com)

Famous for Quality

**MEATS,  
GROCERIES,  
HOT & COLD DELI,  
& HOME MADE  
SAUSAGES**

303 E. Sheridan St. • Ely • 365-3188



**Mat Roderick - CEO**

[mat@elyconstruction.com](mailto:mat@elyconstruction.com)

955 E Sheridan St.

Ely, MN 55731

OFFICE: 218.365.2575

FAX: 218.365.6575

CELL: 218.235.1030

[WWW.ELYCONSTRUCTION.COM](http://WWW.ELYCONSTRUCTION.COM)

## Information on Waste Disposal and Recycling in the Ely Area

Are you like me, always wondering what are the hours of operation if you have trash or recyclables? Load up the truck or car only to find they are closed or will be closed in a few minutes. Here is something that might be of help when you are out at the lake. Remember also you can buy garbage tags in town for your garbage, that you can put out for pick-up. They have various levels, but typically we get ones for 15 pound bags that you stick on a garbage bag that weighs approximately 15 pounds.

### Northwoods Solid Waste Transfer Station

9384 Hwy 21 N, Ely  
365-3895 M, Th, F, Sa: 8am—3pm  
Tu: 9:30 am—3pm  
W: Noon—6pm  
They accept these waste items for free; Antifreeze, Appliances 2/trip. Auto Batteries, Brush, up to 4 foot florescent light tubes or Compact Florescent Lights {CFL} 4 per trip, Motor oil, drained oil filters {6/trip}, scrap metals, used tires up to 24" {4/trip}, mixed paper, mixed cans and bottles, cardboard, yard waste. These waste items are accepted for a fee; Demolition materials, Garbage, Mattress/Box Springs, TVs and computer monitors.  
Household Hazardous Wastes not accepted at this site. Here is the summary web site for St. Louis County; <http://www.co.st-louis.mn.us/slcportal/LinkClick.aspx?fileticket=rgKy0TZe1j8%3d&tabid=160>  
Hazardous waste sites are listed under another heading; <http://www.co.st-louis.mn.us/slcportal/SiteMap/HomePage/Departments/SolidWaste/Hazardous-Waste/tabid/204/Default.aspx>

### Ely Area Recycle Center.

446 W. Sheridan, Ely {Approximately}  
Hours of Operation  
Sunday and Tuesday - Closed  
Monday and Friday 7 am to 3 pm  
Wednesday and Thursday 10 am to 6 pm  
Saturday 7 am to 12 noon  
Area will be closed when bins are full  
Brush and Mulch accepted from City of Ely Residence only.



The Turtle  
Joe Geshick

## Kess Gallery

and frameshop

*Jewelry, Original Art,  
and Expert custom framing*

130 E. Sheridan St Ely, MN  
800-777-7652



## Wild Woods LAND COMPANY

1325 E. Sheridan St. Ely, MN  
218-365-3665

### REAL ESTATE SALES

#3231 - North Arm Cabin- 450' of level sandy shoreline, mature norway, wood-burning fireplace & sauna. **\$645,000**

#3194 - East Arm Cabin- 3 acres & 370' of level shoreline. Cabin is 50' from the waters edge with sauna. **\$749,000**

#3146 - Burntside Island- Two cabins and sauna on 3.2 acres with 396' of shoreline. Power and septic. **\$699,000**

[www.elywildwoods.com](http://www.elywildwoods.com)

## **WILDFIRE PROTECTION!**

**MATSON MOTORS IS YOUR CONNECTION TO  
WILDFIRE PROTECTION SYSTEMS.**

**CALL US TODAY BEFORE IT'S TOO LATE!**  
**365-2555**



**Josh Day**  
☎ 218 365 3500  
☎ 218 365 3503  
alldayllc@gmail.com  
205 North Central Avenue  
Ely, Minnesota 55731

## DAY BROTHERS BARGING

COMPLETE PORTABLE BARGING SERVICES  
"Floating Above The Soil."

Phone: 218.365.5474  
Fax: 218.365.6495

P.O. BOX 341  
Ely, MN 55731

Custom handcrafted,  
handcarved wood doors,  
and furnishings.

## Huisman Concepts, Inc.

2027 Haapala Road  
Ely, Minnesota  
218-365-4699



[www.huismanconcepts.com](http://www.huismanconcepts.com)

*A complete design  
and construction company*

John Huisman  
2027 Haapala Road  
Ely, MN 55731  
218-365-4699



## Huisman Concepts, Inc.

[www.huismanconcepts.com](http://www.huismanconcepts.com)



HEARTH  
SIDE  
CORNER



### Your Full Service Fireplace Shop

-Free Estimates -Friendly Service

1203 East Sheridan St.  
Ely, MN 55731  
(218) 365 5013

Fax : 365-5028  
hearthsidcorner@citlink.net  
www.hearthsidcorner.com

Showroom Hours: Mon.-Sat. 10a.m.-5p.in.  
Owners: Mark & Donna Blanchfield

z'UP  
NORTH  
REALTY



## Andrea Zupancich Broker/REALTOR

218-365-8822  
218.749.0159 cell  
andrea@zupnorthrealty.com

15 Commerce Road • Babbitt, MN 55706  
218.827.2288 Office • 218-827.3773 Fax  
218.827.2478 Residence  
zUPNorthRealty.com



1230 E. Sheridan St.  
Ely

365-3216

- Groceries • Meats
- Homemade Sausage • Broasted Chicken
- Bakery • Deli

## Burntside Cabin Care

Mark Riikola 218-365-3436  
Licensed Contractor - #20160135  
Lake Resident

- \*Construction
- \*Maintenance
- \*Painting
- \*Snow plowing/shoveling
- \*Open/close



**Spirit of the Wilderness**  
*Outfitting Your Needs*

Canoe Rentals - Outfitting - Bait & Tackle  
Outdoor Gear & Apparel

800-950-2709  
2030 E Sheridan St Ely, MN 55731  
[www.elycanoetrips.com](http://www.elycanoetrips.com)

## Jimmy Z's Sales



**Authorized  
Dealer**

Email: zup@frontiernet.net  
[www.jimmyzsales.com](http://www.jimmyzsales.com)

▪ Snowmobile/ATV Trailers ▪ Docks ▪ Boat Lifts

**Free Estimates  
Free Installations**

Toll Free: (866) NEW DOCK  
Office: (218) 827-8400  
Home: (218) 827-2478  
Cell: (218) 343-4278  
Fax: (218) 827-2148

## Burntside Barge Service

A small, safe, easy to access barge service  
designed for loads too large or messy for your  
personal watercraft.

Mike Loisel 218-365-6171

## Burntside Lodge



365-3894

unique gifts • fine wines  
lakeside dining • outstanding cuisine  
large selection of burntside apparel

## The Loon Watch Program

Imagine a northern lake without the haunting calls and awe-inspiring presence of the Common Loon. It's a disturbing thought, but in some places, it's happening. Air and water pollution, loss of habitat, and increasing recreational activities on lakes all pose serious threats to loons across North America, and in some cases are responsible for loons and loon music disappearing from traditional nesting lakes.

LoonWatch, a program of the Sigurd Olson Environmental Institute, protects common loons and their aquatic habitats through education, monitoring, and research. Though our primary focus is Wisconsin, our education and research activities extend to Upper Great Lakes region, such as Michigan and Minnesota. We also lend support to North American conservation efforts by working with loon conservation organizations across the United States and Canada.

LoonWatch, its Advisory Council, and volunteers are all working toward common goals of loon conservation and protection. For more information about the program, contact the Sigurd Olson Environmental Institute at Northland College, (715) 682-1220, or email [loonwatch@northland.edu](mailto:loonwatch@northland.edu).

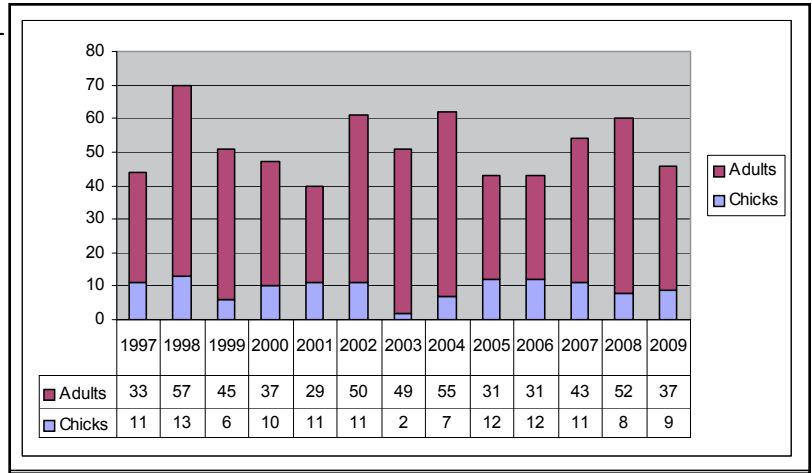
Loons are considered one of the most primitive birds on earth. They have not changed from their current form for the last one million years. The first loon relative appeared about 25 million years ago and measured about six feet from beak to tail. There are five species of loons in the world: Common Loon (*Gavia immer*), Yellow-billed Loon (*Gavia adamsii*), Pacific Loon (*Gavia pacifica*), Arctic Loon (*Gavia arctica*), and the Red-throated Loon (*Gavia stellata*). Only the Common Loon breeds in the lower 48 states and usually nests on inland lakes.

- Loon Watch focuses on the protection of common loons and their aquatic habitats through education, monitoring, and research.
- Loon Identification—What does a common loon look like?
- Loon Behavior & Vocalizations—Learn how to identify the diverse behaviors of loons and what they mean.
- Loon Ecology—Learn about the life cycle of a loon and loon habitat.
- Frequently Asked Common Loon Questions—Do loons mate for life? Are loons protected? How many eggs do loons lay? Look here for the answers to these and other frequently asked loon questions.
- Other Loon Groups & Resources—Visit these websites for information and news about loons across North America.
- Loon Artificial Nesting Platforms—Determine if your lake is a good candidate for a nesting platform and find out what you need to do to acquire a permit or notify the Wisconsin DNR about your platform project.

Check out their web site at:

<http://www.northland.edu/sigurd-olson-environmental-institute-loon-watch.htm>

## Burntside Lake Loon Count



1610 E. Washington St. • Ely, MN • (218) 365-6234

Jon Prijatel

Licensed Bonded Insured

Hardwood  
Laminate



Tile  
Vinyl

Hunter Douglas Window Treatments

Allan Eckman - President

Brenda Eckman - Vice President

114 E. Chapman Street  
Ely, MN 55731

(218) 365-6433  
FAX: (218) 365-2495

## Sunrise Cabin Care & Construction

License 20497400

Professional Building Services

Renovations Remodels Additions

Energy Efficiency Upgrades Decks Caretaking

and much more ...just ask us!

\*References from you neighbors available upon request\*

Drew Shock (218) 365-2147 Ely, MN

Experienced • Licensed • Insured



## Joe's Marine & Repair, Inc.

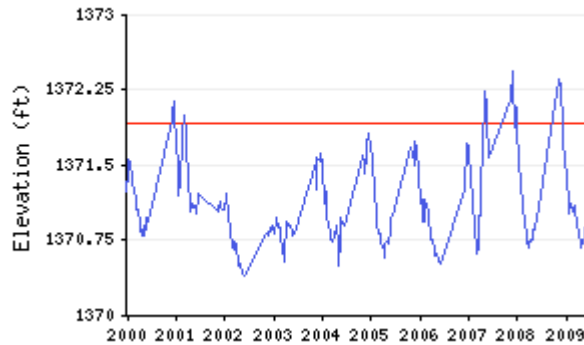
JOHNSON • LUND • STIHL • ARIENS

25 W. CHAPMAN ST. • ELY, MN 55731  
(218) 365-6264

# Lake Level Report

Lake Name: Burntside

County: St. Louis **Burntside - 69011800**



Period of record: 09/13/1939 to 12/03/2009

# of readings: 637

Highest recorded: 1374.83 ft (09/29/1948)

Lowest recorded: 1370.07 ft (10/26/1997)

Recorded range: 4.76 ft

Last reading: 1371.04 ft (12/03/2009)

Ordinary High Water Level (OHW) elevation:

1371.9 ft Datum: NGVD 29 (ft)

## Benchmarks

Elevation: 1375.27 ft

Datum: NGVD 29 (ft) Date Set: 05/24/2005

Benchmark Location

Township: 63 Range: 12 Section: 8

Description: Found 2009. Top SW corner of block wall for gas tank near lake, 14' northerly of ramp, approx. 2.0' above grd, at Anderson's Resort (temp gage site), 3133 Fireside Dr, Ely.

Elevation: 1374.83 ft

Datum: NGVD 29 (ft) Date Set: 11/07/1990

Benchmark Location

Township: 63 Range: 13 Section: 23

Description: USGS "TT29 S"; Chiseled square, (approx. 3") on top of a large rock ledge, 30'SW of the SE corner of boathouse, on N. side of a small rocky point. At Burntside Lodge on south side of lake.

## What is up with the Scientific and Natural Area {SNA} on Burntside Lake?

When the second call in as many weeks came in asking about "those islands with the yellow signs" on Burntside Lake, I figured it was time to get the word out about Burntside Islands Scientific and Natural Area (SNA). These SNA Areas were established in 1991 after The Nature Conservancy donated Pine and Snellman Islands to the state. Two nearby islets were later added through donation of a conservation easement by Barb and Dan Schmiechen. Like state parks and wildlife management areas, scientific and natural areas are owned by the state for the people of Minnesota. They differ, though, in why they're protected and how they're managed.

There are 149 SNAs scattered across Minnesota, and all are intended to be used for scientific research, nature observation, and/or education. They protect features ranging from native prairies, to rare species and their habitat, to significant geological features, to exceptional or undisturbed native plant communities. Burntside Islands SNA falls into the latter category. Like other islands on the lake, they support examples of Great Lakes pine forest. Unlike most of the other islands, they remain little-disturbed and open to the public. The oldest pine are 300 years old. Others date from fires in 1862 and 1910. Because of the age of the forest, pine snags are fairly common, including one that held a nest of the diminutive northern saw-whet owl. Snags, or diseased, dying and dead trees, are favored nesting sites for primary cavity excavators like woodpeckers, nuthatches and chickadees. A host of other species that aren't able to excavate their own cavity (secondary cavity users), including species of owls, swallows, mammals, and even frogs, can later take advantage of the primary cavity nesters' industriousness.

Scientific and natural areas ultimately benefit humans. Besides their recreational, aesthetic, and educational appeal, future dividends may be realized from research conducted on these areas. For example, a University of Minnesota study is comparing the islands' natural forests with forests managed for commercial products. This type of research may provide insight into how we can better manage our commercial forests to provide the products and services we all need and use.

The public is welcome to hike, snowshoe, or ski Burntside Islands SNA. Because of the undisturbed nature of these islands, and their shallow soils supporting fragile mosses and lichens, visitors are asked to tread softly. Please refrain from camping, campfires, berry-picking, or otherwise damaging or cutting vegetation. Respecting the rules will ensure these "hidden" gems will remain as they are now, and continue to serve as a valuable resource for the public and scientists alike.

For more information on scientific and natural areas, including Burntside Islands, visit <http://www.dnr.state.mn.us/snas/index.html>.

Steve Wilson MN DNR Regional Scientific and Natural Area Specialist  
650 Highway 169 • Tower, MN 55790

# Proposed Rule Changes by the Department of Natural Resources

At last year’s annual meeting we heard from Amy Loiselle that there would be new rules coming out shortly for docks as well as shoreline. Unfortunately the progress has been slow. The Proposed Shoreline Rules are awaiting the governor’s signature to proceed, but nothing has happened at this writing. Any thought of new Dock Rules is far behind. There isn’t a proposed rule change put together anywhere near the governor’s desk. I have pulled information from the Internet on both of the rules that gives you an update plus some web site addresses that you can follow.

Below is the latest on the new Shoreline rules that are coming out from the Department of Natural Resources. This is a news release from the DNR. It appears the rules are not completed at this time.

### May 2010 Newsletter

#### Public Hearings on Proposed Rules

Once the draft rules are ready to proceed to public hearings, DNR will initiate the hearing process with the Office of Administrative Hearings (the assignment of an administrative law judge, hearing locations, dates, formal posting). The time frame for this process is uncertain, so we cannot yet estimate when the hearings will be. There will be a series of perhaps eight public hearings in four locations across the state (afternoon and evening sessions). For those who cannot attend a hearing, we will be providing the same information on our Web page as well as information on the hearings and how to submit comments into the record during the hearing period.

#### Minnesota Conservation Volunteer

The May-June 2010 issue of the Minnesota Conservation Volunteer features an article entitled “Minding our Shores” that includes comments from a number of people who participated on the development of the draft shoreland rules. For an electronic copy: <http://mndnr.gov/magazine> .

#### Shoreland Conservation in Urban Areas

The Government Training Services is offering three half-day classes for local governments, their staff and citizen committees that explain how the draft rules can successfully be put to work in urban areas. Cost for the class is \$60. Peder Otterson, Shoreland Update Project Manager, (651) 259-5697

Paul Radomski, Science Advisor, (218) 833-8643  
Felicia Barnes, Planner, (651) 259-5716  
Web site: <http://mndnr.gov/waters/shoreland.html>  
You can subscribe to the e-mail updates.

As I said the new dock rules are far behind, here is what I received from Tom Hovey of the DNR who is working on the updated rules. I have talked with Jeff Forester of the Minnesota Seasonal and Recreational Property Owners Coalition, who is also following these rules.

### Listserv Update for Structures in Public Waters Rule Revision – March 2010

There is not much new to tell you, but it has been a long time since my last update and I wanted to let you know that the process of rule-revision continues. We have been using a thorough and transparent process in revising the rules for structures in public waters. Currently the draft rule revisions are in the ‘Governor’s office review’ phase of the process.

When we receive comments from this latest part of the process, we will establish our rule-making authority and pick up the process again. Please be assured that we will do what we can to move this process forward for the best possible results in balancing the use and protection of Minnesota’s public waters. The existing rules have been in-place for a long time and need updating. It is our intention to do it well.

When the public hearing part of our process arrives, we’ll be sure to publicize it well. We hope to hold them in three or four locations around the state to give people as much chance as possible to attend. You may be interested to know that with the required rule-making schedule, including requirements for hearing notification, comment periods, review by the administrative law judge, and publication in the State Register, the revised rules will not be in effect before this boating season. The existing rules and general permit for dock platforms (No. 2008-0401) will be in place as summer begins. Recall that you can review the general permit for dock platforms at:

[http://files.dnr.state.mn.us/waters/watermgmt\\_section/pwpermits/general\\_permit\\_2008-0401\\_platform.pdf](http://files.dnr.state.mn.us/waters/watermgmt_section/pwpermits/general_permit_2008-0401_platform.pdf)  
General information about the rule-revision process for structures in public waters is found at:

[http://www.dnr.state.mn.us/waters/watermgmt\\_section/pwpermits/structures\\_rules.html](http://www.dnr.state.mn.us/waters/watermgmt_section/pwpermits/structures_rules.html)

Please note that we have a new email address for questions and comments related to the revision of the rules for structures in public waters: [structures.dnr@state.mn.us](mailto:structures.dnr@state.mn.us).

Of course, please feel free to call me if you have questions, need clarification or would like to comment. My contact information is below.

Thank you for your interest in this process and in the protection of our public waters.

Tom Hovey  
Public Waters Hydrologist  
MN DNR Waters  
500 Lafayette Road  
St. Paul, Minnesota 55155  
Phone: 651.259.5654 • Fax: 651.296.0445  
[tom.hovey@state.mn.us](mailto:tom.hovey@state.mn.us)

Visit our website at: <http://mndnr.gov/waters> plus [http://www.dnr.state.mn.us/waters/watermgmt\\_section/pwpermits/structures\\_rules.html](http://www.dnr.state.mn.us/waters/watermgmt_section/pwpermits/structures_rules.html)

## Land Conservation on Burntside Lake

Ever wonder what is up with Long Island on Burntside Lake? Hopefully we can bring you some answers as to what it means to you as a lake owner. The majority of the island now belongs to the public for recreational enjoyment. Below is an article by The Trust for Public Land, concerning the conservation of lands on Burntside Lake and other northwoods sites. Other places in our newsletter are articles from both the Forest Service and the Minnesota DNR. Please review those also, because we have an opportunity to suggest recreational needs for Long Island.

Close review of a plat map of the shorelands and islands of Burntside Lake conveys a complicated patchwork of private, public, and mixed-use lands. Yet when you look at the sum, you find a beautiful gem of a lake, situated on the edge the wilderness, loved and cared for by the people who know her best – homeowners, campers, foresters, naturalists, conservations, and visitors alike.

Yet when a particular property is sold, questions often arise about the future of that parcel and the new owner, whether that owner is a private citizen, a land conservation organization or the public. Too many times the answers are hard to ascertain and the outcome uncertain.

For example, the acquisition of Long Island, a gem of an undeveloped island in the middle of Burntside, has been the topic of discussion by many in the community for several years, ever since the Trust for Public Land began working with community leaders, the former landowners and the Forest Service to devise a long-term plan for its protection. Today that land is owned by the public as part of the Superior National Forest and is available for the public to enjoy and care for as a natural resource. The reasons and method by which it became protected is almost as important as the fact that it was accomplished.

Other property owners have made different choices related to conservation – establishing conservation easements that will protect the land in perpetuity. For each landowner, there are various options that lead to a long-term conservation solution. But understanding what exactly those options are and who to turn to for advice is important to know.

This August 7th, The Trust for Public Land and the Minnesota Land Trust will be leading a conversation at the Burntside Property Owners Association's annual meeting about our work on Burntside Lake and the Northwoods and describing some of the land conservation options available to families and individuals, and discuss this work in the context of the broader northwoods landscape.

To learn a little more about the Trust for Public Land and our work in the Northwoods, there's an excellent feature article online: [http://www.tpl.org/tier3\\_cd.cfm?content\\_item\\_id=21411&folder\\_id=3368](http://www.tpl.org/tier3_cd.cfm?content_item_id=21411&folder_id=3368)

Please also visit The Trust for Public Land web site; [www.tpl.org](http://www.tpl.org)

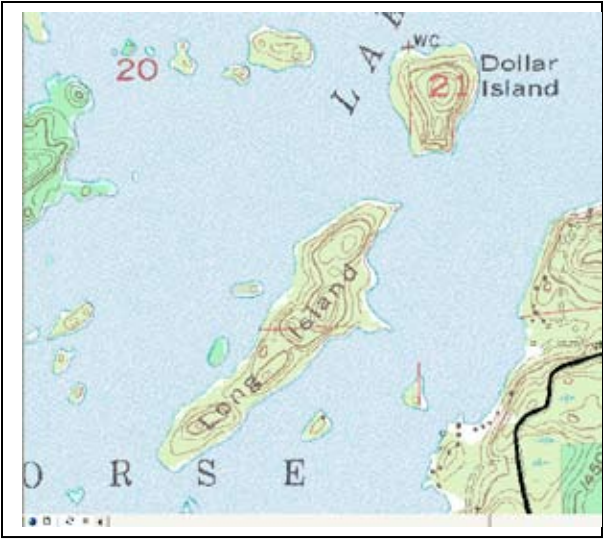
We look forward to the opportunity to reconnect with many of those we've already spoken with, meet those we haven't, and share with the Association stories of the land surrounding Burntside. Landowners questions can be addressed to Jenna Fletcher at The Trust for Public Land: [Jenna.Fletcher@TPL.org](mailto:Jenna.Fletcher@TPL.org) 651-917-2240.

Information on the Minnesota Land Trust can be found at:

<http://www.mnland.org/index.html> and the local contact in Ely, MN is Fitz Fitzgerald, [ffitzgerald@mnland.org](mailto:ffitzgerald@mnland.org), 218- 365-8663.

**Information on Long Island plus existing campsites on Burntside Lake**

You may not be aware that Long Island has been put into the public domain as part of the Superior National Forest. The Trust for Public Land has finally completed the transfer to the US Forest Service. The Forest Service is now evaluating the Island for its recreational potential. The US Forest Service is looking for our input on what we, on the lake, would like to suggest for the recreational opportunities on this island. If the USFS chooses to develop a new site or sites on Long Island, there would be a process that would include ample opportunities for public involvement - after all, the lands in question belong to the US public.

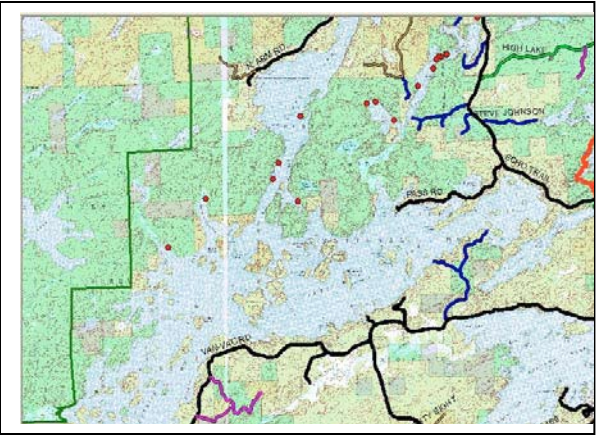


**Long Island on Burntside Lake**

The USFS would develop a proposal, such as to create and designate new campsites which would include tent pads, firegrates, latrines and picnic tables at certain locations. The proposal would then go out to a Forest-wide mailing list, adjacent landowners, and anyone else we know of who may be interested. If they begin this process within the next year, it would be helpful to let them know who the interested public might be. The USFS could mail the proposal to everyone on the Burntside Lake Association mailing list, or they could mail it to our association's contact. We could discuss that at our upcoming annual meeting. Since some people are seasonal cabin/home owners, it might be best to e-mail information to everyone because the public process may occur in winter when many of us are in warmer climates. Please also note that the original donors of the island still occupy a small portion of Long Island and they have a lifetime easement, be mindful of this as you use the island.

**Here is information on existing campsites on or near Burntside Lake:**

**From the Forest Service:** Rules for occupancy on federal lands that would apply include: people can occupy a site for up to 14 days and are then required to move. Also, a person cannot leave a site unattended with their gear or camping equipment set up for more than 24 hours without forfeiting the site - in fact a Forest Service Officer can confiscate the gear if they know a party has been away for more than 24 hours. Of course the site would only be "policed" in a situation like this where leaving gear set up for more than 24 hours with the intention of "reserving" the site had a high likelihood of occurring.



**Existing Campsites on Burntside Lake**

## Boating with Buoys & Safety

As you know we have new Buoy placement contractors as of last year. Here is a note from Vermilion Barging that explains the purpose and placement of our buoys. I also have a procedure that can pin-point the missing buoy locations fairly easily for them rather than verbally explaining where it is missing. It seems to work for them and I'll explain it later in the newsletter. It involves Google Maps and Mapquest.

Don't rely entirely on buoys or channel markers. They can move off station due to wind, waves, current or other reasons.

Channel markers are the red & green buoys – always go between them.

White buoys with the orange diamond are hazard buoys meaning stay away, hazardous area. These buoys mark rocks, reefs and shallow water. They do not always sit right in the middle of the hazard area or directly on top of the rocks. Some hazardous areas are 100 to 200 ft in diameter and have only one buoy marking the whole area.

The buoys are placed in front of or alongside the hazard area because with the anchor weight, cable and buoy it all sets down about 4 to 5 ft in the water. This also allows for the movement of the buoy and cable due to wave action so it does not rub on the edge of the rock and break the cable or damage bottom of the buoy.

Generally the buoys are set to the heavier traffic side of the hazard area.

**REMINDER:** All of your GPS navigation units state the warning but do not rely on this product as your primary source of navigation. The coordinates off the GPS maps are not always exactly on the rock pile or buoy markings.

Remember that not every rock or reef piles are marked and when lake levels are lower these reefs are closer to the water surface.

When approaching a hazard buoy a good rule of thumb is a no wave speed of 4 to 5 mph or slower and trim up lower unit or motor approximately 10 boat lengths away (160 to 200 ft away)

When accelerating you have to remember that your back end of the boat is auguring down in the water until sufficient speed is reached to set the boat to plane out. The larger the boat, the deeper the auguring down and may be several feet.

Fisherman should not tie their boats to buoys unless for emergency- this can cause buoys to move from their position and is violation of statute.

## Buoy Placement on Burntside

We have a new contractor placing the Buoys on the lake.

They are very responsive and interested in correctly doing the placements.



### Vermilion Barging Inc

Lauren & Sheri Sawatzky

2750 W. Wakemup Village Road

Cook, MN 55723

218-666-5512 • Bubba@accessmn.com

Assisting Lauren and Sherri; Bud and Irene Van Deusen

### Van Air

PO Box 357 • Tower, MN 55790

218-753-2331 • vanair@rangenet.com

Or call Sheriff's Office if Buoys are missing.

### Sheriff of St. Louis County

- Dave Phillips 218-726-2339

- Dirk Davis, Sergeant in Virginia 749-7172

Landscaping

Sand & Gravel

Rooter Service

## Walsh Sewer & Septic Systems Co.

Installation Septic Tank Pumping

Road Repair Service

Back Hoe & Dozer Work

Free Estimates

Sewer Line Video Camera

218-365-4041 • 218-343-1231

Licensed • Bonded • Insured

Lic #1586

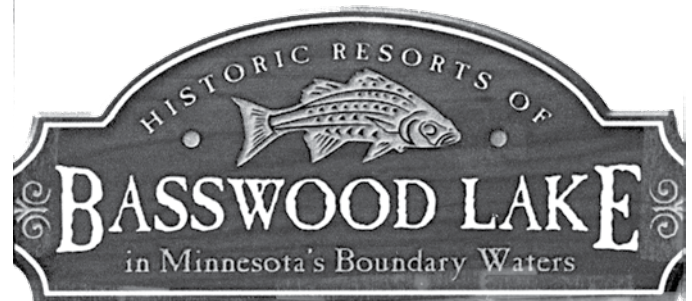
Plumbing Needs

JIM WALSH

P.O. Box 68

13964 Lauder Blvd.

Winton, MN 55796



www.aholaink.com connie@aholaink.com 952-913-2559 / 218-365-6171

## Listening Point

I was lucky enough to be invited to Twelfth Annual Sigurd F. Olsen Birthday Anniversary Luncheon this year. It was a truly amazing event with the Keynote Speaker being Don Shelby the new anchor for WCCO-TV here in the twin cities. Don spoke on "What Sig Knew before it was Known". It was a pretty moving talk, almost a prayer to nature. How when you get away into nature everything gets calmer and you really feel at peace. Don finished his talk with this statement that chloroplast {organism that conducts photosynthesis} and human blood have the same molecular structure except chloroplast has a magnesium atom surrounded by 136 atoms of Oxygen, Carbon and Hydrogen, and human blood has same make-up of 136 atoms of Oxygen, Carbon and Hydrogen but they are surrounding an iron atom. So the catch phrase that Don left us with is, "When you are out in the woods say hello to your brothers".

It is also amazing that we have a piece of this history right on our lake with Listening Point. It is located on the south arm of Burntside Lake, and was Sigurd and Elizabeth Olson's retreat in the woods. Most important, however, was the westward-facing point itself: glaciated greenstone rock fringed with weathered pines and partly covered with a patch of bearberry and juniper. Sitting on the end of Listening Point, Sigurd could look out over the wide-open spaces of Burntside Lake, listen to the birds, watch the sunset, and regain some balance in a life that had become more and more hectic at a time when most people begin to think about retirement. In 2007 it was added to the National Register of Historic Places.

The Listening Point Foundation, Inc., a nonprofit charitable organization, was established in 1998 and is dedicated to furthering Sigurd Olson's legacy of wilderness education, and preserving Listening Point, the rugged northern Minnesota lakeshore property. The Listening Point Foundation owns and cares for Listening Point, conducts visits for the interested public, publishes wilderness education materials, and sponsors wilderness educational programs.

If you are interested in visiting Listening Point while at the lake please e-mail or call them to arrange a visit;

The Listening Point Foundation, Inc.

Executive Director: Alanna Dore

P.O. Box 180

Ely, Minnesota 55731

218-365-7890 • [listeningpoint@cpinternet.com](mailto:listeningpoint@cpinternet.com)

Their web site is: <http://www.listeningpointfoundation.org/>

## Charitable Contributions

Most years we have a small amount of funds left over at the end of the year that we typically donate to the local community. Last year being my first year as president I neglected to bring up this need. So this year we donated \$500 to various programs or groups that are of assistance to the Burntside Lake Property Owners. We are happy to report that we donated \$200 to the Ely Public Schools to help with their wish list. Our East Arm representative, Pam Freeman, was instrumental in finding out the most pending needs of the school. We also donated to the First Responders who are always there when we need them, hopefully not too often, \$100 to the Northwoods Hospice Respite Partners, and \$100 to the Igloo Snowmobile Club, who does the trail markings on Burntside so everyone can travel on the ice in safe manner. Thanks to all these great services, hopefully or small contribution will be of assistance to them. We are open to suggestions as to other organizations that would be of interest to you. Please let us know via US Mail or e-mail.

## We need your help!!

Since the ice on Burntside went out so early this year everyone has been talking about being a record for the earliest ice out ever. When we tried to look up the records there doesn't seem to be any. So we would like to locate recorded ice out dates for Burntside Lake. We have some dates but it isn't a complete record. Please contact me, Reynold Mack at [reynold.mack@comcast.net](mailto:reynold.mack@comcast.net) with what information you may have. We will have ice-out dates posted at our annual meeting. Bring your dates and help fill-in the blanks. Thanks for your help.

We are also looking for your input on what you would like to see as far as recreational opportunities on Long Island so that we might pass that information on to the Forest Service for their evaluation. Send your ideas to; [reynold.mack@comcast.net](mailto:reynold.mack@comcast.net).

We have had some complaints about soap in the lake. Please make sure you rinse off in the sauna/shower after soaping up and before diving in the lake. It doesn't seem like one person would affect much, but with others doing the same it soon becomes an additive effect. Please also check to see that you don't have any direct discharges to the lake from your facilities. At a minimum your sauna should be going to some on shore system so the water may at least have time to pass through soils before entering the lake. Also check to see that your other wastewaters are going to the proper type of treatment system whether it is old or new. This should be a self-evaluation that you can in good conscience live with. Further questions check with John Lindquist, in Ely, his direct line is (218) 365-8222, Cell: (218) 750-6614 The web site is; <http://www.co.st-louis.mn.us/sleportal/SiteMap/HomePage/Departments/PublicHealthandHumanServices/EnvironmentalHealth/EHIndividualSepticSystemInformationForms/tabid/446/Default.aspx>

## Recipe Corner

**Finnish Pannukakku** From: Connie Ahola Loisel  
 4 ounces butter 4 eggs  
 2 ½ T. sugar dash of salt  
 1 C. flour 2 cups milk

Melt butter in 9 x 13 pan. Beat 4 eggs in a large bowl and mix in dry ingredients. Slowly add milk, beating after each addition. Pour mixture into melted butter in pan and bake at 350 degrees for 45 minutes Let set a few minutes. Serve warm with maple syrup or powdered sugar.

**Rudy's Hot Dog Sauce** (A secret sauce from Ohio) R. Mack  
 1 lb ground beef {lean or extra lean}  
 1 tsp paprika  
 1 tsp ground cumin  
 1½ tsp Chili Powder  
 1 tsp salt or add according to taste

Barely cover ground beef with water in saucepan, bring to boil, mashing while coming to boil to avoid lumps. {I mix with electric eggbeater}. Add spices and simmer for 30 minutes. {I find if you let it sit overnight refrigerated it tastes even better}. I add extra water so it makes extra gravy to soak into bun. Cook hotdogs as you would normally, put in bun, add mustard, finely chopped onions, and top with the sauce. Put extra gravy on to make the bun a slightly soggy.

PS: I usually double the spices except for the salt.

## The Savvy Secchi

What does a Secchi Disk Measure?

Simply put, a Secchi disk measures how far down into the water a person can see, or how much light passes through the water. This is called water transparency. It provides an indirect measure of the suspended particles in the water. In many cases this is an indication of the amount of algae in the water. The three environmental factors causing decreasing Secchi disk measurements are quantity and type of algae, quantity and type of other suspended materials such as soil particles and color of the water. Algae abundance is related to the amount of nutrients present, especially phosphorus and nitrogen.

Nutrients may reach the lake from sources such as sewage treatment plants, septic tanks and lawn and agricultural fertilizer. Suspended particles may come from sources such as re-suspension from the lake bottom, construction sites, agricultural fields, and urban storm runoff. Transparency serves as an early warning that activities on the land are affecting the lake. Below is a list of recent readings, on Burntside Lake.

### Average Secchi Reading

Year	Feet	Year	Feet	Year	Feet	Year	Feet	Year	Feet	Year	Feet
1987	20.6	1991	21.4	1995	19.8	1999	19.1	2003	25.5	2007	21.0
1988	21.4	1992	23.6	1996	19.3	2000	20.1	2004	23.0	2008	21.0
1989	20.1	1993	20.3	1997	19.7	2001	18.7	2005	23.0	2009	19.7
1990	21.4	1994	17.8	1998	21.1	2002	20.0	2006	25.0		

URL for Secchi Disk Reading on Burntside Lake

<http://www.pca.state.mn.us/water/clmp/clmpSearchResult.cfm?lakeID=69-0118>

### Access to Crab Lake

Do you like to walk the Crab Lake Portage? Do you enjoy paddling the Crab Lake area for the day? If you do, remember to fill out a required self-issued permit that covers you for day use hiking or paddling at Crab Lake or any other area of the Boundary Waters Canoe Area Wilderness (BWCAW). The Forest Service provides self-issued permits in permit boxes at the boat landings on the Passi Road and County Road 404/Van Vac Rd. You can also visit the Kawishiwi Ranger District office and get a supply of permits to keep at your cabin/house. When you are ready to go for the day, fill out the permit and take the white copy with you. The yellow copy can then be put in the mail (postage paid), dropped off at the Forest Service office, or put in one of the permit boxes.

If you are planning an overnight stay, a permit is required using the BWCAW Reservation System at [www.recreation.gov](http://www.recreation.gov) - click on 'permits' or visit a Forest Service office.

The Forest Service Kawishiwi Ranger District office is open everyday during the summer including weekends and holidays and is located at 1393 Highway 169, Ely, across from the International Wolf Center. If you have questions, please call 218-365-7600.

Tracy Richards

USDA Forest Service

Visitor Information Specialist

### Open Burning Permit

For your information you can get burning permits on line and avoid going into town to get a paper copy of a burning permit that you might not be able to use. The online permits cost \$5 for the year, but can cover more than one site if you apply for them all at the same time. All you need to do is go to; <http://www.dnr.state.mn.us/permits/index.html> or just type in; <http://www.dnr.state.mn.us/permits> Then pick burning, Click on "Apply for Burning Permit online"

Because space is limited in the newsletter we have much more on this procedure on our web site and our blog.

**CAMP VAN VAC**  
A LAKESIDE RESORT

**Sauna Fishing Campfire Canoes**

Romantic log and stone housekeeping cabins on Burntside Lake. Summer rates from \$440-\$1400 a week. Spring and fall discounts.

**Fun Boats Blueberries Serenity**

218-365-3782

[www.campvanvac.com](http://www.campvanvac.com)

## Burntside Property Owners Association Info. Web Site links of Interest

Our Web Site: <http://burntside.org/>

Blog Site: [http://groups.yahoo.com/group/burntside\\_poa/](http://groups.yahoo.com/group/burntside_poa/)

Minnesota Seasonal and Recreational Property Owners  
<http://www.msppo.org/>

Minnesota Waters  
<http://www.minnesotawaters.org/>

Listening Point Foundation:  
<http://www.listeningpointfoundation.org/>

Loon Watch Program  
<http://www.northland.edu/sigurd-olson-environmental-institute-loon-watch.htm>

North St. Louis County Soil & Water Conservation District  
{You can order trees for spring planting}  
<http://www.nslswcd.org/>

City of Ely  
<http://www.ely.mn.us/>  
Find hours for the Ely Recycling Center

St. Louis County for Waste Transfer Station  
<http://www.co-st-louis.mn.us/slcportal/LinkClick.aspx?fileticket=rgKy0TZe1j8%3d&tabid=160>  
{To get the hours for the Transfer Station}

DNR Proposed Rules web sites:

Shoreline Rules Web sites:

<http://mndnr.gov/waters/shoreland.html>

<http://www.dnr.state.mn.us/volunteer/mayjun10/shorelands.html>

Status of Proposed Dock Rules Web Site:

[http://www.dnr.state.mn.us/waters/watermgmt\\_section/pwpermits/structures\\_rules.html](http://www.dnr.state.mn.us/waters/watermgmt_section/pwpermits/structures_rules.html)

{See article in Newsletter on both rules}

DNR Public Waters Work Permit Program  
<http://www.dnr.state.mn.us/waters/index.html>

DNR Lake Finder Information on Burntside Lake  
<http://www.dnr.state.mn.us/index.html>  
{Go to Lake Finder and type in Burntside}

St. Louis County Property Records  
{You can search by Lake}  
<http://www.co-st-louis.mn.us/auditor/parcelinfo2005/default.aspx>

Open Burning Permit System from the DNR  
<http://www.dnr.state.mn.us/forestry/fire/questions.html>  
{See information on our web site and blog}

US Forest Service web site:  
<http://www.fs.fed.us/r9/forests/superior/>



Rugged. Natural. Refined.

**JJ Day**

*Owner, Designer*

p 218.365.5474 | f 218.365.6495

P.O. Box 341 | Ely, MN 55731

[jj@daystonelandscaping.com](mailto:jj@daystonelandscaping.com)

[www.daystonelandscaping.com](http://www.daystonelandscaping.com)



222 W Superior St. Ste 200  
Duluth, MN 55802  
218.723.2762  
218.723.2660 Fax  
800.777.8534 Toll Free  
[timothy.p.riley@wellsfargo.com](mailto:timothy.p.riley@wellsfargo.com)

**Timothy P. Riley, CFP®**  
Certified Financial Planner

THE PRIVATE BANK

### Defenbaugh Law Office WILLIAM E. DEFENBAUGH, JR. Attorney at Law

107 East Camp St.  
Ely, MN 55731

Phone: (218) 365-4977  
Fax: (218) 365-6164  
[billdef@frontiernet.net](mailto:billdef@frontiernet.net)



ELY | 232 w sheridan . ely mn  
p | 218 365 0809  
VIRGINIA | 105 5th avenue n . virginia mn  
p | 218 741 5610  
e | [pebblespaco@gmail.com](mailto:pebblespaco@gmail.com)  
w | [www.pebblespaco.com](http://www.pebblespaco.com)

## Passing on Your Private Hideaway— It Takes Communication and Planning

Kelly Klun

Klun Law Firm, Ely, Minnesota.

Burntside Lake is truly a magical place. For years or perhaps decades, family, friends and loved ones have gathered at the family cabin to build and share memories that span generations. The fun-filled campfire conversations are priceless. Of equal importance, are the conversations spent discussing the future of the family cabin.

If your goal is to pass on the family cabin to the next generation, planning ahead is crucial. Together you can determine how the cabin will best fit into the family's future. For example, perhaps not all family members are interested in continuing to own the cabin or perhaps

not all family members have the financial resources to maintain the cabin. Inevitably, part of the communication process involves the preparation of an estate plan. The plan must be tailored to fit your family's needs. A cabin trust is just one estate planning tool that can be utilized to help maintain and pass on the family hideaway. For example, specific trust provisions could provide future instruction to your family on important issues such as taxes, maintenance, insurance, ownership and a potential sale.

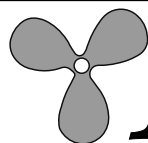
Through open, honest communication and with the right planning, you and your family can ensure the family cabin remains a source of joy and respite for your family. The preparation of an estate plan should be thought of as a priceless preventative tool. Talk with your family today and take that next step of developing an estate plan that protects both your family and your private hideaway.

*Here is a thank you note we received after hosting some of our relatives at the cabin a few summers ago. It is a very thoughtful essay from someone that was only sixteen at the time.*

### A Minnesota Jewel

by Rachel Sobke, Glenwood Springs, Colorado

Picture a cabin peeking from behind spindly evergreen trees. Beside the dock, canoes rest upside down, and water laps the shore as if trying to reach the vessels. This would be a cabin on Burntside Lake in Ely, Minnesota. The whole experience makes it a feast for the senses and an oasis for the soul. Instantly, there is a warm greeting from the residents to compliment the frigid air. It is only morning, and the sweltering heat of the afternoon seems forever away. A canoe or boat ride will take guests across the clear, glassy lake to the island where the cabin waits patiently to excite new visitors. Upon arriving at the cabin, there is a flurry of activity. Kayaks beg to traipse around the beaver lodge through the horsetails and flowering lily pads. Fish bite bare hooks. By far, the highlight of the cabin is the authentic Finnish sauna. The smell of cedar is potent enough to taste. Water sizzles on the wood-burning stove to create a heat wave that burns the ears and opens all of the pores on the body. When the 140 degree plus heat becomes too much, the Finnish custom is to run outside and jump into the cool moonlit lake. The most peaceful time is floating on the dark water soaking in the magic of the infinite stars. Contemplating the stars strewn across the clear sky, one realizes the insignificance of the day's troubles. At that moment, the lake's enchantment takes over and all realize what a special place Burntside Lake is. The great company, natural beauty, sauna and exciting activities prove for an unforgettable encounter with paradise.



# MATSON MOTORS

**MARINE & SMALL ENGINE REPAIR**

2068 HIGHWAY 169 ELY, MN 55731

**HONDA  
ENGINES**

**218-365-2555**

BOB MATSON/OWNER

*Pick Up & Delivery*

Snapper Lawn & Garden - Jonsered Chain Saws

Rental Equipment



**VERMILION PAINTING LLC**

**NICK LEVENS/OWNER**

**218.780.8847**

PO Box 321

TOWER, MN 55790

## Greetings from Tower Area Fisheries

Rainbow smelt were first observed in Burntside Lake in 1970. Since the unintentional introduction of smelt we have observed a nearly total failure of natural recruitment of walleye, lake whitefish, and cisco in Burntside Lake. Lake trout natural reproduction was also poor and has only recently shown signs of rebounding. These are all cold water spawning species that do not nest or otherwise protect their young following spawning. The scientific literature has many examples of similar recruitment failures for cold water spawning fish in lakes stocked with smelt. The mechanisms by which smelt affect recruitment of other species may be direct (by preying on eggs or young fish) or indirect (by competing with these species for forage, particularly invertebrate forage).

After smelt became abundant in Burntside Lake cisco numbers gradually declined, and no cisco have been captured in the last six deepwater assessments on Burntside Lake. Lake whitefish numbers also gradually declined after about 1980 and the average size of whitefish increased, reflecting the lack of recruitment of young whitefish. Only one small whitefish has been captured in deepwater assessments since 1988. Examination of whitefish otoliths collected in 2007 estimated the whitefish, which ranged in size from 22-27 inches, were 20-40 years old. Ageing of walleye scales indicates almost all of the walleye captured in recent assessment are from fingerling stocked years.

Lake trout were stocked in Burntside Lake prior to the initial lake survey in 1950, but it is likely lake trout were present in Burntside Lake prior to stocking. From 1942 to 1986 fry, fingerlings or yearlings of various strains of lake trout (many were Lake Superior strains of lake trout) were stocked. Only Gillis Lake strain lake trout have been stocked in Burntside Lake since 1988. Gillis Lake is a 570 acre remote lake in the BWCAW in the northwestern part of Cook County that has a native lake trout population (lake trout have never been stocked in Gillis Lake). A Fisheries Research project was initiated in the early 1980's to compare the performance of Gillis lake trout with lake trout from Lake Superior, when stocked in inland lakes. This research project found that lake trout reared from lake trout eggs taken at Gillis Lake (now referred to as the GIL strain) survived better than lake trout reared from eggs taken from a couple different locations on Lake Superior, when stocked in inland lakes. Until recently, only the GIL strain has been used to stock inland lake trout lakes. However, after having the GIL strain brood stock line in our hatchery system for some years, the hatch rate of eggs declined significantly, requiring the hatchery to maintain considerably more brood fish to provide enough eggs to meet fingerling and yearling production quotas for stocking. Various procedures were attempted in the hatchery to try to increase the egg hatch rate, but none worked. After a lot of discussion, evaluation, and some initial testing with brood line development and egg hatch rates, a decision was made to eliminate the GIL strain from our hatchery system and switch to the Mountain Lake strain (MTN strain) for stocking inland lakes. Mountain Lake is on the Minnesota-Ontario border in Cook County.

Genetic testing of GIL strain, MTN strain, and Lake Superior strains of lake trout shows the MTN strain is genetically different from the GIL strain of lake trout and the Lake Superior strains, but is more similar to Lake Superior lake trout than the GIL strain. The GIL strain has been performed well in Burntside Lake and

in recent years we have observed an increase in natural reproduction of lake trout in Burntside Lake, which we think is attributed to the GIL strain of lake trout. All lake trout stocked in Burntside Lake after 1984 have been fin-clipped to identify the stocked fish. The fin that is clipped at the hatchery is either the right pelvic fin, the left pelvic fin, the adipose fin (a small fleshy fin on the back between the dorsal fin and the tail fin), or a combination of one of the pelvic fins plus the adipose fin. In recent investigations the proportion of lake trout of all sizes with no clips has steadily increased from 11 percent (3 of 27) in 2001, to 23 percent (6 of 26) in 2003, 33 percent (9 of 27) in 2005, 54 percent (14 of 26) in 2007, but then inexplicably declined in 2009 to 14 percent (3 of 21). During this same time period we have received reports from anglers that they are catching increased numbers of unclipped lake trout. With the steady increase in natural reproduction of lake trout (increasing number of lake trout with no clips), which we attribute to the GIL strain of lake trout, and the elimination of the GIL strain from our hatchery system, we made a decision to discontinue lake trout stocking in Burntside Lake to see if natural reproduction of lake trout will be able to maintain the lake trout population. We did not want to start stocking the MTN strain of lake trout because it is more genetically similar to the Lake Superior strains of lake trout. We conduct deepwater assessments on Burntside Lake every two years and the next planned deepwater assessment is scheduled for 2011. We will use these evaluations to determine future lake trout management on Burntside Lake.

It should be noted that lake trout stocking of Snowbank Lake (east of Winton out the Fernberg Road) was discontinued after 1995. The lake trout population in Snowbank Lake is now maintained by natural reproduction. The last stocking of GIL strain yearlings was completed in April 2010 (about 71,000 yearlings). After a decision was made to eliminate the GIL strain from our hatchery system, we were able to obtain some of the GIL strain brood stock from the hatchery. These brook stock were stocked in Burntside Lake in the fall of 2009 to increase the lake trout spawning stock.

We have been conducting shallow water assessments on Burntside Lake every four years. Ageing of walleye captured in shallow gillnet sets in Burntside Lake indicates almost all of the walleye are from fingerling stocked years. We plan to continue stocking walleye fingerlings in Burntside Lake every other year. The next stocking of walleye fingerlings is scheduled for fall 2010. The next shallow water assessment on Burntside Lake is scheduled for 2011.

Joe Geis, Supervisor • Tower Area Fisheries  
650 Hwy. 169 • Tower, MN 55790

## Mike's Liquor Store

*The most complete wine selection in northern Minnesota*

Beer, Microbrews, Liquors  
8:30 am - 10 pm Monday - Saturday

email:djdusich@frontiernet.net  
Dan & Jayne Dusich 365-5087

## From the Treasurer's Desk...

From the BY-LAWS dated 9/10/76, the purpose of the **BURNTSIDE PROPERTY OWNERS' ASSOCIATION** is to "enhance, promote and protect the interest of property owners on Burntside Lake and the immediate watershed thereof." As a property owner, that's your interest! There is no political agenda. Wouldn't you like to join?

We send the newsletter to all property owners, members of the BPOA or not, with the hope that many more property owners will send in the \$12.00 dues. We are able to keep dues low because of the advertising in the newsletter. We encourage you to patronize the businesses that advertise here.

An envelope has been provided to make your life easier or you can use the form below. Please send your \$12.00 for 2010 dues along with the form below to: BPOA, P.O. Box 81, Ely, MN 55731.

Thank You

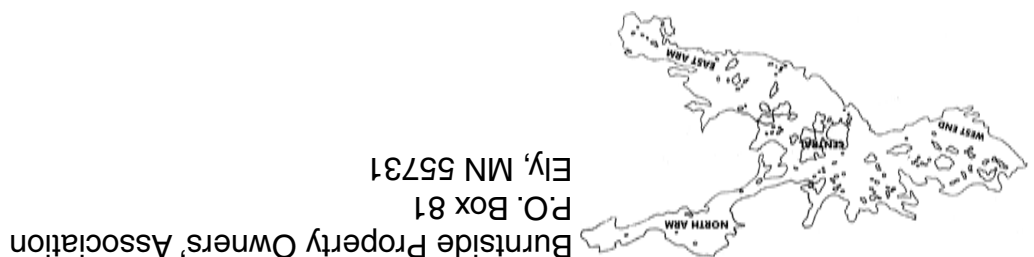
(Clip and Send)                      Send to: BPOA, P.O. Box 81, Ely, MN 55731  
2010 Property Owner Dues and/or Address Change Notification

Name (Please Print): \_\_\_\_\_

Mailing Address (include only if changed): \_\_\_\_\_  
\_\_\_\_\_

Enclosed are 2010 Dues of \$12.00                       Please note my change of address.

Please remove me from the mailing list.



# The Savvy Secchi

## History

For all its simplicity, the Secchi Disk is the most economical, quickest, easiest and most widely used tool to measure water quality. It may even be the oldest monitoring tool still being used. It dates back to 1865 when Fr. Pietro Angelo Secchi was asked by Commander Cialdi, head of the Papal Navy, to measure transparency in the Mediterranean Sea. Fr. Secchi was an astrophysicist and scientific advisor to the Pope. Since 1865 various sizes and colors have been used. The two most commonly used variations are an all-white metal disk and a disk painted in black and white quadrants. The Minnesota Pollution Control Agency (MPCA) uses an all-white, 8-inch diameter notched metal disk. The notched sides are for rope storage when the disk is not in use. The attached waterproof rope is marked in meters or feet for easier reading.

## What does a Secchi Disk Measure?

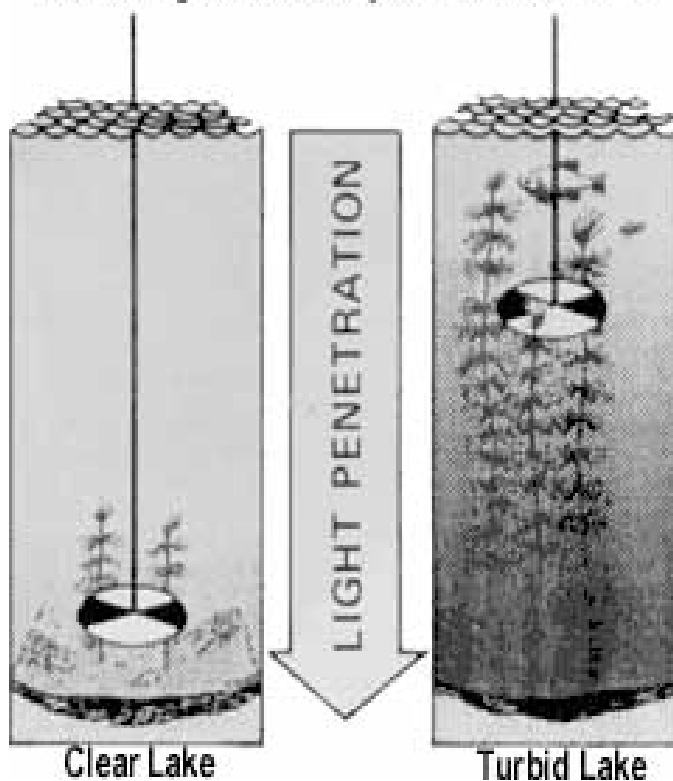
Simply put, a Secchi disk measures how far down into the water a person can see, or how much light passes through the water. This is called water transparency. It provides an indirect measure of the suspended particles in the water. In many cases this is an indication of the amount of algae in the water. The three environmental factors causing decreasing Secchi disk measurements are quantity and type of algae, quantity and type of other suspended materials such as soil particles and color of the water. Algae abundance is related to the amount of nutrients present, especially phosphorus and nitrogen. Nutrients may reach the lake from sources such as sewage treatment plants, septic tanks and lawn and agricultural fertilizer. Suspended particles may come from sources such as re-suspension from the lake bottom, construction sites, agricultural fields, and urban storm runoff. Transparency serves as an early warning that activities on the land are affecting the lake.

Year	Feet	Year	Feet	Year	Feet	Year	Feet
1987	20.6	1993	20.3	1999	19.1	2005	23.0
1988	21.4	1994	17.8	2000	20.1	2006	25.0
1989	20.1	1995	19.8	2001	18.7	2007	21.0
1990	21.4	1996	19.3	2002	20.0	2008	21.0
1991	21.4	1997	19.7	2003	25.5	2009	19.7
1992	23.6	1998	21.1	2004	23.0		

## Getting the Best Secchi Disk Measurements

Despite its long use, there is no universally accepted protocol for taking measurements. In some cases Secchi depth is where the disk is just visible, while in others it is the depth where it disappears. The most commonly recommended Secchi reading is the average of the depth at which the disk disappears and then reappears. We appreciate the dedication of volunteers on Burntside Lake who have taken Secchi Disk Readings for many years. Heading the list is George Nyman who has been monitoring the east part of the lake for over 22 years. The central part of the lake is now being monitored by Milt Stenland's son, Bryan Stenlund and son-in-law, Walt Plude. Special thanks also go to, Gordon Reabe, Lee Lilya, and Dave Bahnemann for their efforts.

## Measuring Water Clarity with a Secchi Disk



URL for Secchi Disk Reading on Burntside Lake

<http://www.pca.state.mn.us/water/clmp/clmpSearchResult.cfm?lakeID=69-0118>

## **What is up with the Scientific and Natural Area {SNA} on Burntside Lake?**

When the second call in as many weeks came in asking about “those islands with the yellow signs” on Burntside Lake, I figured it was time to get the word out about Burntside Islands Scientific and Natural Area (SNA). The SNA was established in 1991 after The Nature Conservancy donated Pine and Snellman Islands to the state. Barb and Dan Schmiechen later added two nearby islets through donation of a conservation easement. Like state parks and wildlife management areas, scientific and natural areas are owned by the state for the people of Minnesota. They differ, though, in why they’re protected and how they’re managed.

There are 149 SNAs scattered across Minnesota, and all are intended to be used for scientific research, nature observation, and/or education. They protect features ranging from native prairies, to rare species and their habitat, to significant geological features, to exceptional or undisturbed native plant communities. Burntside Islands SNA falls into the latter category. Like other islands on the lake, they support examples of Great Lakes pine forest. Unlike most of the other islands, they remain little-disturbed and open to the public. The oldest pine are 300 years old. Others date from fires in 1862 and 1910. Because of the age of the forest, pine snags are fairly common, including one that held a nest of the diminutive northern saw-whet owl. Snags, or diseased, dying and dead trees, are favored nesting sites for primary cavity excavators like woodpeckers, nuthatches and chickadees. A host of other species that aren’t able to excavate their own cavity (secondary cavity users), including species of owls, swallows, mammals, and even frogs, can later take advantage of the primary cavity nesters’ industriousness.

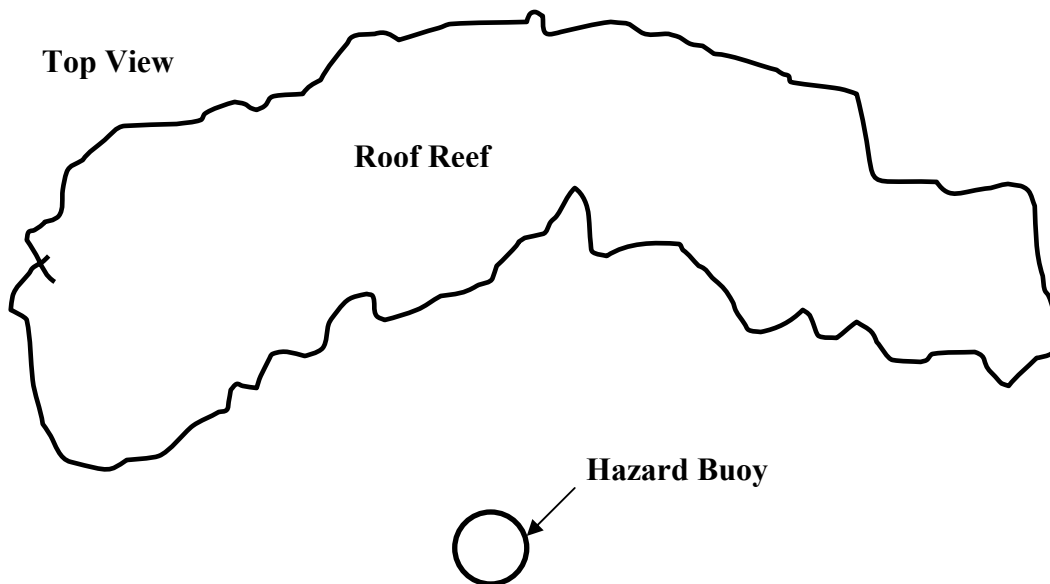
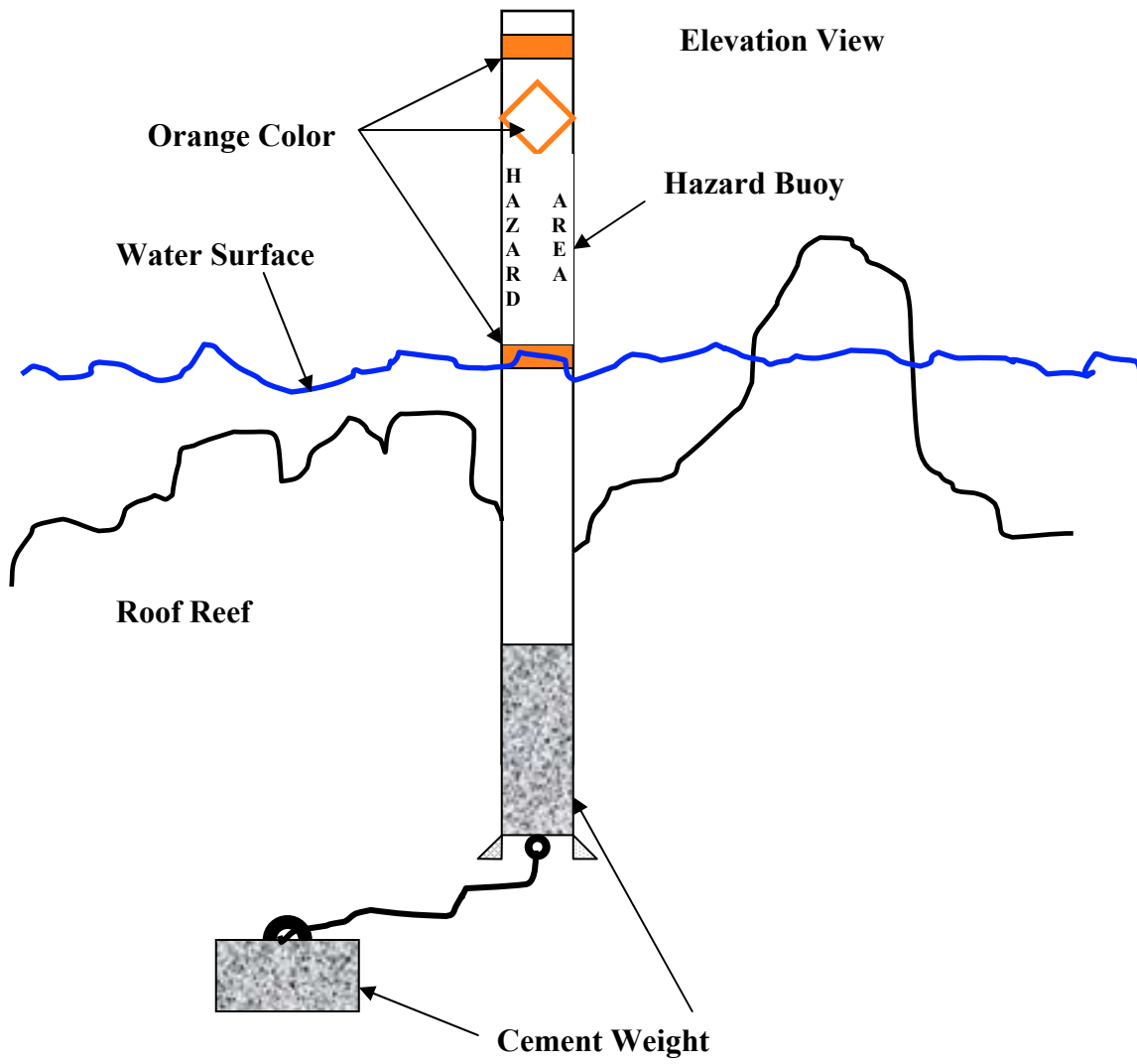
Scientific and natural areas ultimately benefit humans. Besides their recreational, aesthetic, and educational appeal, future dividends may be realized from research conducted on these areas. For example, a University of Minnesota study is comparing the islands’ natural forests with forests managed for commercial products. This type of research may provide insight into how we can better manage our commercial forests to provide the products and services we all need and use

The public is welcome to hike, snowshoe, or ski Burntside Islands SNA. Because of the undisturbed nature of these islands, and their shallow soils supporting fragile mosses and lichens, visitors are asked to tread softly. Please refrain from camping, campfires, berry-picking, or otherwise damaging or cutting vegetation. Respecting the rules will ensure these “hidden” gems will remain as they are now, and continue to serve as a valuable resource for the public and scientists alike.

For more information on scientific and natural areas, including Burntside Islands, visit <http://www.dnr.state.mn.us/snas/index.html>.

Steve Wilson  
MN DNR Regional Scientific and Natural Area Specialist  
650 Highway 169  
Tower, MN 55790

# Drawing of Buoy Placement



**Ice-Out and Ice-on Data for Burntside Lake, Ely, Minnesota; Lake No. 69011800**

Year	Ice Out Date	Time	Data from	Contact Info	Other Date	Contact Info	Ice on Date	Data from	Contact Info
1940	May 11, 1940		Jay Mackie						
1941	April 10, 1941		Jay Mackie						
1942	missing		Jay Mackie						
1943	May 2, 1943		Jay Mackie						
1944	May 11, 1944		Jay Mackie						
1945	April 12, 1945		Jay Mackie						
1946	April 24, 1946		Jay Mackie						
1947	May 13, 1947		Jay Mackie						
1948	April 28, 1948		Jay Mackie						
1949	April 28, 1949		Jay Mackie						
1950	May 22, 1950		Jay Mackie						
1951	May 5, 1951		Jay Mackie						
1952	April 29, 1952		Jay Mackie						
1953	May 5, 1953	Ice was in main part 4/26	Jay Mackie and Dick Maki						
1954	May 12, 1954								
1955	4/20-21/1955		Waino Maki via Dick Maki plus Jay Makie	Dick Maki and Jay Mackie					
1956	May 10, 1956		Jay Mackie						
1957	May 1, 1957		Jay Mackie						
1958	April 21, 1958		Jay Mackie						
1959	missing								
1960	May 1, 1960		Waino Maki via Dick Maki	Dick Maki					
1961	May 1, 1961		Waino Maki via Dick Maki	Dick Maki					
1962	May 6, 1962		Waino Maki via Dick Maki plus Jay Makie	Dick Maki and Jay Mackie					
1963	April 30, 1963	Bay was clear on 4/27	Waino Maki via Dick Maki	Dick Maki					
1964	April 18, 1964		Waino Maki via Dick Maki	Dick Maki					
1965	later than 4/29/65		Waino Maki via Dick Maki	Dick Maki					
1966	missing								
1967	missing								
1968	missing								
1969	missing								
1970	missing								
1971	missing								
1972	missing								
1973	missing								
1974	missing								
1975	missing								
1976	April 19, 1976		Waino Maki via Dick Maki	Dick Maki					
1977	missing		Waino Maki via Dick Maki	Dick Maki					
1978	May 4, 1978		Waino Maki via Dick Maki	Dick Maki					
1979	May 12, 1979		Waino Maki via Dick Maki	Dick Maki					
1980	missing		Waino Maki via Dick Maki	Dick Maki					
1981	black ice 4/12		Waino Maki via Dick Maki	Dick Maki					

## Ice-Out and Ice-on Data for Burntside Lake, Ely, Minnesota; Lake No. 69011800

Year	Ice Out Date	Time	Data from	Contact Info	Other Date	Contact Info	Ice on Date	Data from	Contact Info
1982	ice on main lake 5/2		Waino Maki via Dick Maki	Dick Maki					
1983	April 23, 1983		Waino Maki via Dick Maki	Dick Maki					
1984	missing								
1985	missing								
1986	April 19, 1986		Jay Mackie	Jay Mackie			December 17, 1987	Jay Mackie	
1987	April 16, 1987		Jay Mackie	Jay Mackie			November 20, 1988	Jay Mackie	
1988	April 30, 1988		Jay Mackie	Jay Mackie			December 3, 1989	Jay Mackie	
1989	April 29, 1989		Waino Maki via Dick Maki	Dick Maki			December 2, 1990	Jay Mackie	
1990	April 26, 1990		Jay Mackie	Jay Mackie			November 26, 1991	Jay Mackie	
1991	April 23, 1991		Jay Mackie	Jay Mackie			November 29, 1992	Jay Mackie	
1992	May 6, 1992		Jay Mackie	Jay Mackie			November 28, 1993	Jay Mackie	
1993	April 30, 1993		Jay Mackie	Jay Mackie			December 10, 1994	Jay Mackie	
1994	May 2, 1994		Jay Mackie	Jay Mackie			November 25, 1995	Jay Mackie	
1995	April 30, 1995		Jay Mackie	Jay Mackie			November 27, 1996	Jay Mackie	
1996	May 17, 1996		Jay Mackie	Jay Mackie			December 8, 1997	Jay Mackie	
1997	May 1, 1997		Jay Mackie	Jay Mackie			December 22, 1998	Jay Mackie	
1998	April 17, 1998		Jay Mackie	Jay Mackie			December 17, 1999	Jay Mackie	
1999	April 28, 1999		Jay Mackie	Jay Mackie			December 9, 2000	Jay Mackie	
2000	April 29, 2000		Burntside Lodge	Lonnie	April 29, 2000	Jay Mackie			
2001	May 1, 2001		Burntside Lodge and Jay Mackie	Lonnie and Jay Mackie			December 28, 2001	Jay Mackie	
2002	May 3, 2002		Burntside Lodge	Lonnie	April 28, 2002	Jay Mackie	November 27, 2002	Jay Mackie	
2003	May 2, 2003		Jay Mackie	Jay Mackie			December 3, 2003	Jay Mackie	
2004	April 30, 2004		Burntside Lodge and Jay Mackie	Lonnie and Jay Mackie			December 17, 2004	Jay Mackie	
2005	April 12, 2005		Burntside Lodge	Lonnie	April 18, 2005	Jay Mackie	December 17, 2005	Jay Mackie	
2006	April 15, 2006		MN DNR	Amy Loiselle	April 16, 2006	Jay Mackie	December 7, 2006	Jay Mackie	
2007	April 25, 2007		MN DNR	Amy Loiselle			December 1, 2007	Jay Mackie	
2007	April 27, 2007		Jay Mackie	Jay Mackie			December 1, 2007	Jay Mackie	
2007	April 28, 2007		Burntside Lodge	Lonnie	April 27, 2007	Jay Mackie	December 1, 2007	Jay Mackie	
2008	May 9, 2008		MN DNR	Amy Loiselle	May 12, 2008	Jay Mackie	December 9, 2008	Jay Mackie	
2009	May 1, 2009		MN DNR and Jay Mackie	Amy Loiselle & Jay Mackie			December 14, 2009	Jay Mackie	
2010	April 3, 2010		MN DNR and Jay Mackie	Amy Loiselle & Jay Mackie				Jay Mackie	
2011									

Received from Jay Mackie who lives on the West End of Burntside Lake, and Dick Maki.

Jay Mackie writes: "The following list of dates has been assembled from a number of sources which include the wall of unnamed boathouse and observations from various residents over a period of nearly 70 years.

Plus some fill-in data from Dick Maki via his father's cabin log book, East Arm, Minister Bay

## **BPOA Blog Site Instructions**

This will keep it simple for all of us –

1.) For those who want only to take part in email, send blank email to [burntside\\_poa-subscribe@yahoogroups.com](mailto:burntside_poa-subscribe@yahoogroups.com)

Once you're subscribed and have been approved, you can send messages to the group by emailing them to: [burntside\\_poa@yahoogroups.com](mailto:burntside_poa@yahoogroups.com)

That's pretty much it.

2.) If you would like to do more than be on the mailing list, like share pictures and files, go to [http://groups.yahoo.com/group/burntside\\_poa/](http://groups.yahoo.com/group/burntside_poa/) and click "Join Group". Create an account, or if you already have a Yahoo account, log in and use that. And once you're approved you're all set.

The approval happens after they have taken either of the above actions, I go into the site and put the approval through. The approval process is only meant to keep the blog site exclusive to BPOA.

3.) Exploring the options as a member is actually fun and interesting. Use as much or as little as you wish. It has been a learning process for me too. All pertinent information that Board members have to communicate with BPOA will be posted there, for everyone to use. The board isn't responsible for monitoring questions nor should they be expected to know everything. With this forum, all forum members will be able to feed each other and get many questions answered. Board meeting notes and annual meeting notes can be posted there as well. Documents as in things that could be kept there for extended periods of time, can be posted in the "Files" section. Water quality, maps, articles on regulations for lakeshore and building permits, etc. are possibilities. Explore it and see how to make it work for you.

Bryan Stenlund M.S./L.P.

## Open Burning Permit

For your information you can get burning permits on line and avoid going into town to get a paper copy of a burning permit that you might not be able to use. The online permits cost \$5 for the year, but cover more than one site if you do them all at the same time.

All you need to do is go to;

<http://www.dnr.state.mn.us/permits/index.html>  
or just type in; <http://www.dnr.state.mn.us/permits>

Then pick burning permits and you get;  
<http://www.dnr.state.mn.us/forestry/fire/questions.html>

Click on "Apply for Burning Permit online"

You get; "**Burn Permit Application**" with the following

Determine if your burn site is covered by this process

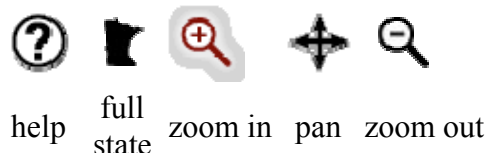
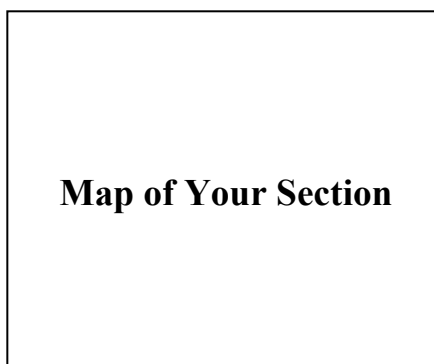
To obtain a burning permit, we must know the location where you will be burning. {You should have this on one of your old burning permits.} To do this, please enter either the address where you want to burn or the legal description (township, section, range from your property tax statement) and click the appropriate search button.

*The system will then attempt to find the location on the map. The burn location will be marked by a yellow square. Zoom in on the yellow square to see if the location is correct. If the square is not where you will be burning, reposition your burn site by moving the point to the correct location. Do this by clicking the "move point" feature at the bottom of the map.*

**Burning Permits and Municipalities:** Please note that this open burning permit is valid for unincorporated areas of the state and within certain municipalities. You must determine if additional permissions or permits are required for your location, and if necessary, secure those permits or permissions.

Plus a map that you need to zoom into to find the location, and only if you are in the center of your section you'll have to move the point by clicking on move location. {Warning, if you are not zoomed in far enough you will get an error message "Too far away to accurately relocate point. Please zoom in closer."} I think they added "Please move in closer." because the first part didn't make sense at first.

Once you locate your burning location, you can add another burning location {i.e., Two separate pieces of property or one large piece of property that can have several burning locations.} under the same \$5 fee, but they will have a different permit number. It works fine for me. I figure that I save that much in gas or time. All you have to do is call in to activate the permit for that day. They reset every night {I think morning} so when you want to activate again the slate will be clean. You can also activate on line if you have Internet access at your site.



**Move Point**