



BURNTSIDE PROPERTY OWNERS' ASSOCIATION

P.O. BOX 81 ELY, MINNESOTA 55731

Volume XVI, Summer 2009

BPOA BOARD

President

Reynold Mack
(651) 295-9877
(218) 365-3331

Vice President

Philip Voxland
(612) 724-2200
(218) 365-5563

Secretary

Tim Riley
(218) 525-6931
(218) 349-7788

Treasurer

Diedre Plude
(218) 349-3482

East Arm Reps:

Ward Nelson
(218) 365-0556
Pam Freeman
(218) 365-7659

North Arm Reps:

Martha Gamble
(218) 365-7158
Corky Johnson
(612) 554-2990

West Arm Reps:

Tim Sundquist
(218) 365-4632
(218) 724-4143
Lee Lilya
(218) 365-6896

Central Reps:

Bryan Stenlund
(218) 327-8937
Mike Loisel
(952) 933-4275
(218) 365- 6171

Island Reps:

Bob Leininger
(651) 484-2553
David Bahnemann
(651) 451-3845
Melissa Buss
952-925-9190

From the President ...by Reynold Mack

As the newly elected president of the Burntside Property Owners Association I hope I will be able to fulfill the legacy left by my predecessors. The interest and love for this magnificent pristine lake, its surrounding environment, and the wonderful people who have been and continue to be exemplary stewards of our shared resource make this area a wonderful place to be and live.

With the spring melt and the rains the lake level is up, and the water is as usual clear, which is one of the characteristics of this beautiful lake.

Various issues have arisen during the past year that you may or may not know about. As you remember from 2008, we were working on the issues involved with the Vermilion State Park and selling School Section Properties on Burntside Lake to maintain a tax base for land lost to the tax rolls when it becomes a public park. The sale of lands around Burntside was removed from the park bill last year, and now it appears the overall purchase plans for the park expansion have been dropped. We need to follow this legislation just to make sure the issued doesn't come up again

Our new issues for this year have been the proposed sale of mining leases near Burntside Lake on the south west end, a new buoy contractor for buoy placement on the lake, the newly assessed evaluations on properties around Burntside Lake, docks and boathouses, and our new fire and emergency services via Fall Lake-Morse Township. We have put information in the newsletter about the Mining Leases that were up for sale in January 2009 and which areas were actually sold. Some good news nothing was sold that was adjacent to Burntside Lake. We also have added information about the new buoy placement contractor with numbers to call if you see that a buoy is missing. The property evaluation issue is ongoing and the association has sent letters to both Morse Township and St. Louis County to verify the procedures used. It is still an individual taxpayer issue that we hope you were able to make your appeal. Many questions have also been asked about boathouse and dock issues on the lake, so we have visited with the DNR office and will have someone coming to explain the rule changes made in 2002. These rules are still being revised at this time. We also look forward to working with the new emergency services providers for our lake.

Other items of interest are: information we received from Lake County Power concerning safety around power lines with downed trees {Don't be a hero and cut trees touching power lines, let the experts do it}, a note from DNR Trails and Waterways concerning public access ramps, information on membership development, and our effort to combine water access properties for maintaining their waste treatment facilities in an economical manner.

Our previous leaders put into place the Burntside Land Use Plan, and codes are understood and respected, Owners and their guests should concern themselves with how noise, bright lights, and anchored platforms might affect others. The Golden Rule is practiced. All is well on Burntside Lake. Enjoy Burntside Lake and all its wonder!

Web Site: <http://burntside.org/>

Blog site address: http://groups.yahoo.com/group/burntside_poa/

See instructions in Newsletter

Please plan to attend the Burntside Property Owners' Association

2009 Annual Meeting

Place: Vermilion Community College Auditorium

Date: **Saturday, August 1, 2009**

Time: Coffee, etc. 8:30 AM

Meeting 9:30 AM

Special Subject: Burntside Lake Assessments – St. Louis County Assessors, Morse Township Supervisor, County Commissioner, Minnesota Department of Revenue, and Rep. David Dill.

Speaker Topic: Update on new rules for docks and boathouses on the lake.

Annual Loon Count will be organized by Tim Riley after the meeting.

Wildfire Protection!

**Matson Motors is your
connection to Wildfire
Protection Systems.**

**Call us today before
it's to late!
365-2555**



*Property Management
Lakeshore Vacation Rentals
Cabin Repairs & Maintenance
Consulting Services
Sales & Development*

1323 East Sheridan St. Ely, MN 55731

www.elylodging.com

888-365-4956

John Swenson - Broker

Buoy Placement on Burntside

We have a new contractor placing the Buoys on the lake. They are very responsive and interested in correctly doing the placements.

Vermilion Barging Inc
Lauren & Sheri Sawatzky
2750 W. Wakemup Village Road
Cook, MN 55723
218-666-5512
Bubba@accessmn.com



Or call Sheriff's Office if Buoys are missing.

Sheriff of St. Louis County
- Dave Phillips 218-726-2339

First Lieutenant, - Dirk Versterg 218-666-2190

ATTN: BURNTSIDE LAKE PROPERTY OWNERS:

If your water access only property is in need if septic or outhouse pumping, we are working with a local septic contractor to have his truck on a barge this spring.

If you are interested please contact
Reynold Mack, President,
Burntside Property Owners Assoc.
651-429-0174, 218-365-3331

“ WORDS OF WARNING”

Trees touching “POWER LINES” may not appear to be energized, however electricity is deadly and like water in a fast moving river will appear still, clam and quiet, until you touch it!!! The river can take you away and pull you under, but electricity can burn you instantly. The sugars in the liquid sap of the tree make a great conductor of electricity. Chainsaws have exploded when touching energized trees, even those of trained professionals.

Even if power lines are dead (POWER IS TURNED OFF) a tree can still spring back and crush a person trying to free the tree from the power lines. Be wise, be patient, leave this job to Lake Country Power. Call {1-800-421-9959} and ask for Mike Meyers.

Lake Country Power invests to clear trees from lines For the most part, the impact that serious weather has on reliable electric service is beyond our control. Outages are inconvenient for members and very costly for Lake Country Power. In 2007, 67.5 percent of the reported outages were caused by trees. But, weather aside, there are ways to control issues related to reliability. That means investing in programs to limit trees, limbs and branches near power lines. In 2007, crews cleared 727 miles of line north of Virginia to south of Cotton at an average cost of \$3,100 per mile.

The cooperative’s board of directors has authorized a \$3.6 million investment in the right of way program this year, supporting an aggressive plan for 2008 to help improve electric service reliability.

Lake Country Power’s special reminder for residents on Burntside Lake

It is very important to avoid planting trees that will grow into power lines. The small tree you get at the nursery can grow rapidly to engulf the power lines on your property. During storms, falling limbs or trees can bring down power lines, creating dangerous situations for residents and line crews. Situations like this can also add to the overall cost of electric service.

When planting, always choose a location away from power lines and electrical equipment. It is important to consider the height and spread of the tree 20 to 50 years from the time of planting. Tall trees and brush should be planted more than 50 feet from power lines. It’s important that line crews have a clear and safe pathway to electric equipment so they can restore power more efficiently and perform regular maintenance when needed.

More information about trees and proper planting can be found at www.arborday.org. Visit www.treetrust.org to learn about a special community service program available to homeowners.

Remember to look up and watch for power lines before cutting trees yourself. One wrong move and it could be deadly. It’s wise to hire a professional to cut and trim trees on your property, especially if they’re near power lines. Please call 800-421-9959. Lake Country Power will write a work order and schedule a time when tree crews will be available to do work. Please keep in mind that tree crews are busiest during the spring, summer and fall so scheduling may be backed up by six to eight weeks.



Kess Gallery
and frameshop

*Jewelry, Original Art,
and Expert custom framing*

130 E. Sheridan St Ely, MN
800-777-7652

The Turtle
Joe Geshick

Help With Book? by Bob Matson

Here is a note from Bob Matson about his interest in boathouse stories, for a book he is writing. His interest started out with his search for the 1958 Crestliner he notes below.

I am writing a book about incredible boathouse “finds”, am and am wondering if anyone might have an interesting story to tell. It doesn’t have to be about a boat, but I’m especially interested in stories that are supported by pictures. For example, the first chapter in my book will be about my own story of how I found my 1958 Crestliner and the many coincidences surrounding it’s restoration.

If you have, or know someone that has a great story, I would love to hear from you. I can be reached at rcmely@frontiernet.net, or by calling my shop at 365-2555.

Thank you for any help you can be! Bob Matson, Ely

Custom handcrafted,
handcarved wood doors,
and furnishings.

Huisman Concepts, Inc.

2027 Haapala Road
Ely, Minnesota
218-365-4699



www.huismanconcepts.com

*A complete design
and construction company*

John Huisman
2027 Haapala Road
Ely, MN 55731
218-365-4699



Huisman Concepts, Inc.

www.huismanconcepts.com



HEARTH
SIDE
CORNER



Your Full Service Fireplace Shop

-Free Estimates -Friendly Service

1203 East Sheridan St.
Ely, MN 55731
(218) 365 5013

Fax : 365-5028
hearthsidecorner@citlink.net
www.hearthsidecorner.com

Showroom Hours: Mon.-Sat. 10a.m.-5p.in.
Owners: Mark & Donna Blanchfield

zUP
NORTH
REALTY



Andrea Zupancich Owner/Broker

218.749.0159 cell
andrea@zupnorthrealty.com

15 Commerce Road • Babbitt, MN 55706
218.827.2288 Office • 218-827.3773 Fax
218.827.2478 Residence

zUPNorthRealty.com



1230 E. Sheridan St.
Ely

365-3216

- Groceries • Meats
- Homemade Sausage • Broasted Chicken
- Bakery • Deli

Burntside Cabin Care

Mark Riikola 218-365-3436
Licensed Contractor - #20160135
Lake Resident

- *Construction
- *Maintenance
- *Painting
- *Snow plowing/shoveling
- *Open/close



Spirit of the Wilderness
Outfitting Your Needs

Canoe Rentals - Outfitting - Bait & Tackle
Outdoor Gear & Apparel

800-950-2709

2030 E Sheridan St Ely, MN 55731
www.elycanoetrips.com

Jimmy Z's Sales



**Authorized
Dealer**

Email: zup@frontiernet.net
www.jimmyzsales.com

▪ Snowmobile/ATV Trailers ▪ Docks ▪ Boat Lifts

**Free Estimates
Free Installations**

Toll Free: (866) NEW DOCK
Office: (218) 827-8400
Home: (218) 827-2478
Cell: (218) 343-4278
Fax: (218) 827-2148

Burntside Barge Service

A small, safe, easy to access barge service
designed for loads too large or messy for your
personal watercraft.

Mike Loisel 218-365-6171

Burntside Lodge



365-3894

unique gifts • fine wines
lakeside dining • outstanding cuisine
large selection of burntside apparel

BPOA Blog Site Instructions

You also may not know that our association has a blog site that you can use for communication or comment and concerns. Bryan Stenland has set up this site and is asking people to use it and let us know how you like it. Here are the instructions for the getting on the blog site:

BPOA Blog Site Instructions

This will keep it simple for all of us –

1.) For those who want only to take part in email, send a blank email to

burntside_poa-subscribe@yahoogroups.com

Once you're subscribed and have been approved, you can send messages to the group by emailing them to: burntside_poa@yahoogroups.com That's pretty much it.

2.) If you would like to do more than be on the mailing list, like share pictures and files, go to http://groups.yahoo.com/group/burntside_poa/ and click "Join Group". Create an account, or if you already have a Yahoo account, log in and use that. And once you're approved you're all set.

The approval happens after they have taken either of the above actions, We go into the site and put the approval through. The approval process is only meant to keep the blog site exclusive to BPOA.

3.) Exploring the options as a member is actually fun and interesting. Use as much or as little as you wish. It has been a learning process for us too. All pertinent information that Board members have to communicate with BPOA will be posted there, for everyone to use. The board isn't responsible for monitoring questions nor should they be expected to know everything. With this forum, all forum members will be able to feed each other and get many questions answered. Board meeting notes and annual meeting notes can be posted there as well. Documents as in things that could be kept there for extended periods of time, can be posted in the "Files" section. Water quality, maps, articles on regulations for lakeshore and building permits, etc. are possibilities. Explore it and see how to make it work for you.

Bryan Stenlund M.S./L.P.

Please note we also have a web site for the Burntside Property Owners Association which is: <http://burntside.org/>



**Residential Lakeshore Homes
Recreational Lakeshore Property
Unimproved Lakeshore
Vacation Property Sales
Commercial Real Estate & Development**

1325 East Sheridan St. Ely, MN 55731
www.elywildwoods.com
888-365-3665
John Swenson - Broker

"When Service and Integrity Matter Most"



Famous for Quality

**MEATS,
GROCERIES,
HOT & COLD DELI,
& HOME MADE
SAUSAGES**

www.zups.com

303 E. Sheridan St. • Ely • 365-3188

Mike's Liquor Store

The most complete wine selection in northern Minnesota

Beer, Microbrews, Liquors
8:30 am - 10 pm Monday - Saturday

email: djdusich@frontiernet.net
Dan & Jayne Dusich 365-5087



HARDWARE • ACE PAINTS • ELECTRICAL SUPPLIES
PLUMBING • GOULD PUMPS SALES & SERVICE

CHRIS MERHAR

E-mail: merharsace@frontiernet.net

Phone 218-365-3129
Fax 218-365-5820

48 East Chapman Street
Ely, Minnesota 55731

Lake Level Report

Lake name: Burntside
St. Louis County

Water Level Data

Period of record: 09/13/1939 to 11/22/2008

of readings: 602

Highest recorded: 1374.83 ft (09/29/1948)

Lowest recorded: 1370.07 ft (10/26/1997)

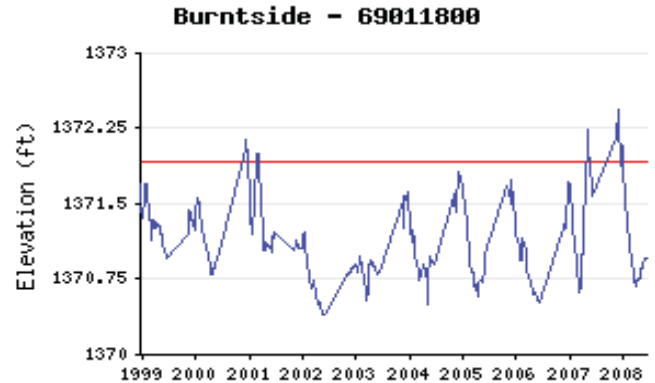
Recorded range: 4.76 ft

Last reading: 1370.95 ft (11/22/2008)

Ordinary High Water Level (OHW) elevation:

1371.9 ft {*Straight Line on chart*}

Datum: NGVD 29 (ft)



Download lake level data as: [[dBase](#)] [[ASCII](#)] (If you have trouble try right clicking on the appropriate link and choosing the "Save ... As" option.)

Greetings from DNR Trails and Waterways

The Tower DNR Trails and Waterways crew made some site improvements this season to the Van Vac Road Public Water Access. The floating dock had begun to show its age and was beginning to list due to a leaky float. It also had decks boards that were rotting. That dock was replaced with a newer version. A wooden staircase was also added from the upper parking lot to address an erosion issue.

The boat ramp was also replaced in early September due to age, wear and tear and, in part, to the use of barges transporting construction materials.

In recent years, development and improvements to roadless lake properties have become more of an issue at public water access sites. Contractors and developers use the access sites to transport construction materials and equipment by barge. If they are not careful, barge operators can cause significant damage to boat ramps. Contractors also off-load gravel and building materials onto public access parking lots and driving lanes, causing damage to the driving surface and delays and inconvenience for boaters.

Water access sites are not designed or intended to accommodate commercial vehicles or barges. While we recognize the convenience and utility of public water access sites as a conduit for transporting construction materials, that use should not be at the expense of the boating public.

We will be closely monitoring the Van Vac Road and other local water access sites for damage incurred from barge and commercial vehicle use, and intend to hold responsible parties accountable.

We also fielded a request a few years back to replace some of the pine trees that had died along the shoreline at the VanVac road site due to excessive sand and salt run off from the driving lanes. First, we requested the local snowplow operator stop sanding and salting the area. Then we planted some four-dozen red pines along the toe of the slope between the roadway and shore. Those trees have taken hold and should be large enough to help screen the access traffic from the lake view in coming years.

We also had a request for a dock at the Passi Road access and have added that to our dock priority list. If you have comments or ideas for how we can do a better job at your public water accesses, please let us know.

Scott J. Kelling, Supervisor
 Tower Area Trails and Waterways
 650 Highway 169 • Tower, MN 55790 • 218 753-2580 x252

HOW TO OBTAIN AN ADDRESS FOR PROPERTY ON BURNTSIDE LAKE

Our Board has had questions as to how to obtain an address for property on Burntside Lake. Here is a partial copy of a brochure I downloaded from the internet. The web address can be found at:

<http://www.co.st-louis.mn.us/slcportal/>

Go to departments, go to Sheriff, go to 9-1-1, go to brochures, then open "Obtaining an Address brochure".

Where do I obtain my address number and sign? The assignment of addresses is handled differently in rural St. Louis County than it is in municipalities. In rural St. Louis County:


Addresses are assigned to primary structures by the St. Louis County 9-1-1 Communications Department. You can reach the addressing division at (218) 726-2920. When requesting an address be prepared to provide the following information:

- > Legal description
- > Parcel Code Number
- > Name of road from which structure is accessed
- > Owner Name/Taxpayer Name
- > Possible neighbors name(s) & each of their respective 9-1-1 address numbers.

Addresses will be assigned to raw land only if an application for a building or septic permit has been initiated. A copy of the permit should be sent to the addressing unit in the Duluth Communications Center (see address on the back of this brochure).

St. Louis County 9-1-1 Communications Department
2030 N. Arlington Avenue
Duluth, MN 55811
Phone: 218-726-2920 Fax: 218-726-2923
E-mail: addressing@co.st-louis.mn.us

BOREAL WOODWORKING



Fine homes, cabinetry & furniture

Michael Dietzman, Owner
MN LICENSE #20382066

BOREALWOODWORKING.COM
CELL 218.343.9411 / PHONE & FAX 218.365.5009
P.O. BOX 465, ELY, MINNESOTA 55731

In rural St. Louis County:

St. Louis County has rules for posting assigned rural addresses in a uniform manner, as outlined in Ordinance #41, so emergency vehicles can easily locate the property. Some of the rules include:

- All new signs installed after March, 2003 must be installed perpendicular to the roadway surface.
- It is your responsibility to maintain the address sign so that it is visible year round and free from snow, foliage and damage.
- Placement regulations are defined in the "Rural Address Sign Placement Guide".

A copy of both the Ordinance #41 and the placement guidelines may be obtained at www.co-st-louis.mn.us/departments/sheriff/911 Communications.



DAY STONE
LANDSCAPING

Rugged. Natural. Refined.

JJ Day
Owner, Designer

p 218.365.5474 | f 218.365.6495
P.O. Box 341 | Ely, MN 55731
jj@daystonelandscaping.com
www.daystonelandscaping.com

Russ Rider
Lic. #20288229

Rider
Home Improvement

• Family Owned and Operated Since 1975 •

790 Wentworth Avenue West
Mendota Heights, MN 55118

O: 651.647.5075
C: 651.246.7729
F: 651.994.8292

DAY BROTHERS BARGING

COMPLETE PORTABLE BARGING SERVICES

"Floating Above The Soil."

Phone: 218.365.5474
Fax: 218.365.6495

P.O. BOX 341
Ely, MN 55731

Docks, Boathouses and Shoreline Alterations

Many people on the lake have been asking about docks and boathouses. What is allowed and what can I do? Do I need a permit, and where do I apply? The important thing to note is that some of the rules were changed in 2006 for boathouses. In addition we provide information on Shoreland Decks and Platforms and Shoreline Alterations that also has been of interest for people using or living on the lake.

Docks

The DNR {Department of Natural Resources} has issued new regulations concerning docks and platforms and also has issued a General Permit for Docks.

Here is a starting point for the web site: http://www.dnr.state.mn.us/waters/watermgmt_section/pwpermits/index.html

If you go to the Docks under the permit programs, you will note the dock rules are still undergoing changes. Hopefully we can get an update to this work at our annual meeting.

Boat Houses

Boat storage structures that are located below the ordinary high-water level (OHWL) of a surface water body have been prohibited in Minnesota since the 1970s. The goal is to limit their private occupation of public waters and encourage the removal of existing structures that do not serve the public interest. However, Minnesota Statutes Chapter 103G.245, Subdivision 4, was amended by the 2006 legislature to address the need for repairs and replacement of boat storage structures that have been in place since 1979. Go to the DNR site "Do I need a Permit" which can be found at the following address. <http://www.dnr.state.mn.us/permits/water/needpermit.html>

You will find information on both boathouses adjacent to the water and those located below the ordinary high water mark. Those adjacent to the water require a permit from your Local Township or County. Repair or reconstruction of an existing wet boathouse is allowed since the 2006 change in rules as noted above, but a permit is required from the DNR. Sorry to say construction of a new wet boathouse is not allowed if there was not an existing one there.

St. Louis County Planning and Development has a Land Use Guide and Standards for Property Owners on line at: <http://www.co.st-louis.mn.us/slcportal/SiteMap/HomePage/Departments/Planning/PhysicalPlanning/PermitApplicationFormsStandards/Guides/tabid/318/Default.aspx>, which we also list under web links of interest elsewhere in this newsletter. These guidelines have information on Shoreline Boat Houses as close as 10 feet from the ordinary high water level. Burntside is more than 5000 acres, thus there are some benefits over smaller lakes.

In association with this St. Louis County information you can find under Shoreland, Decks and Platforms which explains "Shoreland Decks and Platform" requirements and rules.

Shoreline Alterations

There is also information on line for shoreline alterations from the Minnesota DNR. The web page is: http://www.dnr.state.mn.us/publications/waters/shoreline_alteration.html.

You can download their publication on Shoreline Alterations: Natural Buffers and Landscaping, which can be found under Lakescaping. You may also want to look at "A guide to Buying and Managing Shoreland" which can be found on the above web site under Shoreland Management {Header} titled "Shoreland Management Guide."



VERMILION PAINTING LLC

NICK LEVENS / OWNER

218.780.8847
PO Box 321
TOWER, MN 55790

Tonka Bay Builders

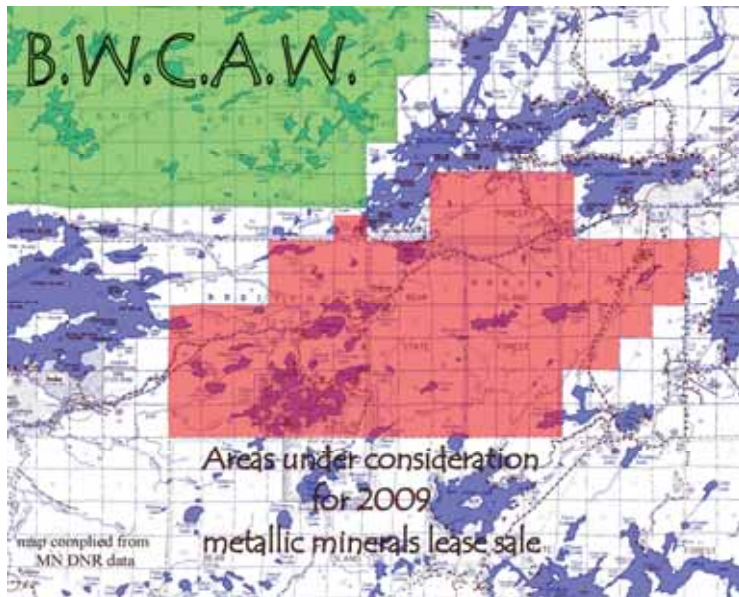
Josh Day
General Contractor
License # 20596215

PO BOX 902
ELY, 55731

P | 612-325-2221
F | 952-446-1396
tonkabaybuilders@yahoo.com

Mining Activities and Mine Lease Sales

This is another hot button topic for our lake and the surrounding area. The people in the White Iron Chain of Lakes Area have been following this process for some time, and we have been in contact with them for more than two years, and hopefully sharing our ideas. The Burntside Lake Area was not directly affected by the proposed mining activities until late last year when proposed mining lease areas near Burntside Lake were up for sale. The map below shows that these leases went right up to Burntside Lake on the south west end of the lake. Luckily there wasn't much interest in most of the area, but some leases were sold in the Mud Lake area. That watershed drains towards Lake Vermilion. We just need to be aware of the activities going on around us and become part of the process {Stakeholders} in the sighting and permitting if and when these operations go forward.

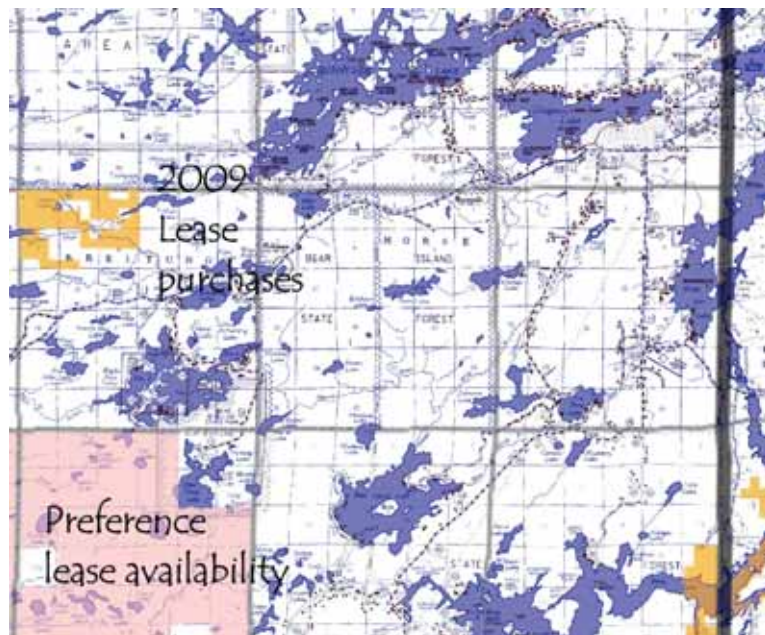


Above was the proposed area for Metallic Mineral Lease Sale in January 2009.

These maps were prepared by;
Todd Ronning
130 South Avenue
Two Harbors MN 55616
218-834-5160
218-590-6081
todd@lakecarvings.com
www.lakecarvings.com

Because the Minnesota DNR only presents it as a dot in the middle of Northeastern Minnesota.

The only area sold >>>>



The actual leases sold during January 2009.

2008 Loon Count

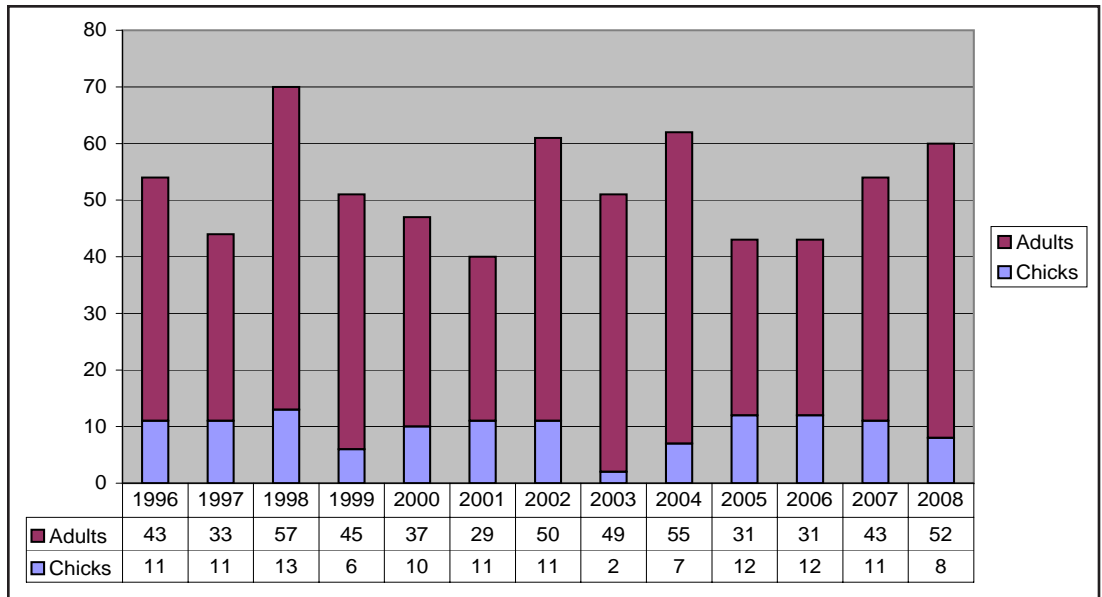
During the 1996 annual meeting of the Burntside Property Owners' Association a new member asked if the number of loons on the lake were increasing or decreasing. After a number of conflicting opinions were rendered, it was suggested that we should count the loons on the lake.

The idea met with unanimous enthusiasm and we organized quickly by segmenting the lake into

sections. Volunteers were assigned an area of the lake and the teams agreed to rendezvous at Burntside Lodge late in the afternoon to record their results. Since then, we have conducted our annual loon count the afternoon of the annual meeting under the able leadership of "Head Loon Counter," Tim Riley. We now have 12 years of loon count data presented in chart form for your interest. The count for 2008 was 52 adult loons and 8 chicks loons.

At the conclusion of this year's annual meeting Tim will ask for volunteers to assemble and each team will be assigned a section of the lake. The 13th Burntside Lake Loon Count will be conducted the afternoon of August 1, 2009.

Burntside Lake Loon Count



Burntside Property Owners Association Info. Web Site links of Interest.

Web Site: <http://burntside.org/>

Blog Site: http://groups.yahoo.com/group/burntside_poa/

North St. Louis County Soil & Water Conservation District
{You can order trees for spring planting}
<http://www.nslswcd.org/>

DNR Public Waters Work Permit Program
Permits for Boathouses and/or Docks
http://www.dnr.state.mn.us/waters/watermgmt_section/pwpermits/index.html

Answers on Boathouses:
<http://www.dnr.state.mn.us/permits/water/answers.html#boathouse>

DNR Shoreline Management Guide
{A Guide to Buying and Managing Shoreland}
<http://www.dnr.state.mn.us/shorelandmgmt/guide/water-quality.html>

DNR Lake Finder Information on Burntside Lake
<http://www.dnr.state.mn.us/lakefind/results.html>

St. Louis County Property Records
{You can search by Lake}
<http://www.co.st-louis.mn.us/auditor/parcelinfo2005//default.aspx>

St, Louis Cty Land Used Guide and Standards for Property Owners
<http://www.co.st-louis.mn.us/slcpportal/SiteMap/HomePage/Departments/Planning/PhysicalPlanning/PermitApplication-FormsStandards/Guides/tabid/318/Default.aspx>

The Savvy Secchi

History

For all its simplicity, the Secchi Disk is the most economical, quickest, easiest and most widely used tool to measure water quality. It may even be the oldest monitoring tool still being used. It dates back to 1865 when Fr. Pietro Angelo Secchi was asked by Commander Cialdi, head of the Papal Navy, to measure transparency in the Mediterranean Sea. Fr. Secchi was an astrophysicist and scientific advisor to the Pope. Since 1865 various sizes and colors have been used. The two most commonly used variations are an all-white metal disk and a disk painted in black and white quadrants. The Minnesota Pollution Control Agency (MPCA) uses an all-white, 8-inch diameter notched metal disk. The notched sides are for rope storage when the disk is not in use. The attached waterproof rope is marked in meters or feet for easier reading.

What does a Secchi Disk Measure?

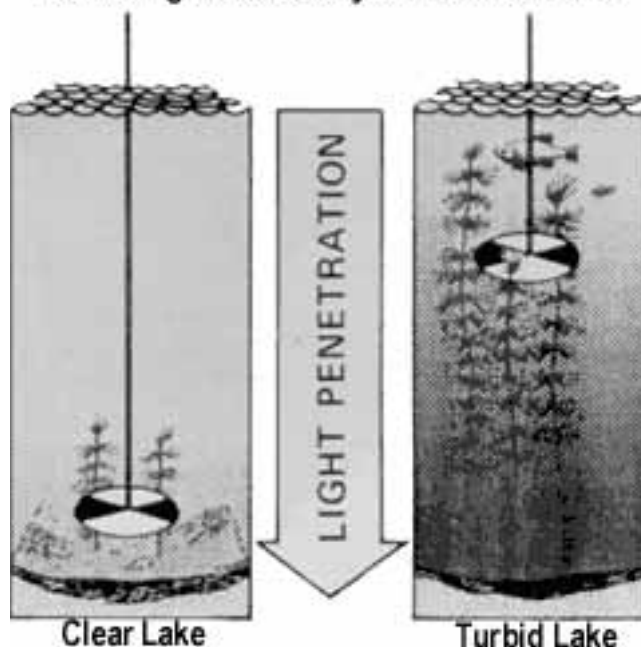
Simply put, a Secchi disk measures how far down into the water a person can see, or how much light passes through the water. This is called water transparency. It provides an indirect measure of the suspended particles in the water. In many cases this is an indication of the amount of algae in the water. The three environmental factors causing decreasing Secchi disk measurements are quantity and type of algae, quantity and type of other suspended materials such as soil particles and color of the water. Algae abundance is related to the amount of nutrients present, especially phosphorus and nitrogen. Nutrients may reach the lake from sources such as sewage treatment plants, septic tanks and lawn and agricultural fertilizer. Suspended particles may come from sources such as resuspension from the lake bottom, construction sites, agricultural fields, and urban storm runoff. Transparency serves as an early warning that activities on the land are affecting the lake.

Getting the Best Secchi Disk Measurements

Despite its long use, there is no universally accepted protocol for taking measurements. In some cases Secchi depth is where the disk is just visible, while in others it is the depth where it disappears. The most commonly recommended Secchi reading is the average of the depth at which the disk disappears and then reappears. We appreciate the dedication of volunteers on

Burntside Lake who have taken Secchi Disk Readings for many years. Heading the list is George Nyman who has been monitoring the east part of the lake for over 22 years. The central part of the lake is now being monitored by Milt Stenlund's son, Bryan Stenlund and son-in-law, Walt Plude. Special thanks also go to, Gordon Reabe, Lee Lilya, and Dave Bahnemann for their efforts.

Measuring Water Clarity with a Secchi Disk



Average Secchi Reading

Year	Feet	Year	Feet	Year	Feet	Year	Feet
1987	20.6	1993	20.3	1999	19.1	2005	23.0
1988	21.4	1994	17.8	2000	20.1	2006	25.0
1989	20.1	1995	19.8	2001	18.7	2007	21.0
1990	21.4	1996	19.3	2002	20.0	2008	21.0
1991	21.4	1997	19.7	2003	25.5		
1992	23.6	1998	21.1	2004	23.0		

URL for Secchi Disk Reading on Burntside Lake

<http://www.pca.state.mn.us/water/clmp/clmpSearchResult.cfm?lakeID=69-0118>

From the Treasurer's Desk...

From the BY-LAWS dated 9/10/76, the purpose of the BURNTSIDE PROPERTY OWNERS' ASSOCIATION is to "enhance, promote and protect the interest of property owners on Burntside Lake and the immediate watershed thereof." As a property owner, that's your interest! There is no political agenda. Wouldn't you like to join?

We send the newsletter to all property owners, members of the BPOA or not, with the hope that many more property owners will send in the \$12.00 dues. We are able to keep dues low because of the advertising in the newsletter. We encourage you to patronize the businesses that advertise here.

An envelope has been provided to make life easier or you can use the form printed below. Please send your \$12.00 for 2009 dues along with the form below to: BPOA, P.O. Box 81, Ely, MN 55731.

Thank You

(Clip and Send)

Send to: BPOA, P.O. Box 81, Ely, MN 55731

2009 Property Owner Dues and/or Address Change Notification

Name (Please Print): _____

Mailing Address (include only if changed): _____

Enclosed are 2009 Dues of \$12.00

Please note my change of address.

Please remove me from the mailing list.

