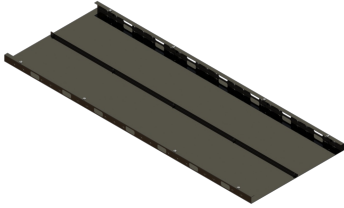




Ortronics

**MM20 Narrow End Panel - for MM20836ADJ 4-Post racks behind a MM20VMD810 or wider manager - Black**  
Part No. MM20EPN836-B

The end panel is used to finish the end of a row of Mighty Mo racks when a vertical manager is mounted at the end of the row. It mounts directly behind the manager concealing cables in the rack frame. The narrow end panel requires the use of an end panel support bracket to stabilize the rear of the end panel.



## Features & Benefits

Used to finish the end of a row of Mighty Mo 20 racks: Gives your installation a clean and professional look while concealing cables in rack channel.

Mounts flush with the surface of 10", 12" and 16" vertical cable management cages: Gives additional support to vertical management cages.

Mounting hardware included: The use of an end panel support kit is required to stabilize the rear of the panel

## Specifications

### General Info

Product Line	Ortronics	Color	Black
UPC Number	662875215875	Country Of Origin	United States
Application Sector	Commercial	Type	Rack

### Additional Information

RoHS Conformant	Yes
-----------------	-----