



# NAPCO iBridgeVideo ISV2-DOME-WIFI HD Indoor / Outdoor Wired / Wireless Dome Camera with Active Deterrence



WI2461CLF 1/22

333 Bayview Avenue, Amityville, New York 11701  
For Sales and Repairs, (800) 645-9445  
For Technical Service, (800) 645-9440 or visit us at  
<http://tech.napcosecurity.com/>  
(Note: Technical Service is for security professionals only)  
Publicly traded on NASDAQ Symbol: NSSC

## Installation Guide

© NAPCO 2022

### Description

The NAPCO **ISV2-DOME-WIFI** is an HD 1080P indoor / outdoor, network wired / wireless dome video camera that allows the viewing of live and recorded video clips through the **iBridgeVideo App** (Android or iOS). The **ISV2-DOME-WIFI** also allows for motion-triggered video clip push notifications. The camera is equipped with **Active Deterrence**, namely an integral spotlight and 110dB siren. The selective **Smart Detection** option helps to reduce false alerts. In addition, the **Two-way Talk** feature includes integral speaker and microphone with echo cancellation technology to allow the homeowner to clearly interact with pets and family, or dissuade unwelcome guests.

To activate the camera, an active NAPCO ComNet Dealer account at [www.NapcoComNet.com](http://www.NapcoComNet.com) is required.

- Supports 802.11 b/g/n Wi-Fi Connection @ 2.4GHz
- Dual Internal Antenna 2x2 MIMO
- Wired Ethernet Connections Supported
- Maximum 30fps@ 2.0MP (1920 x 1080)
- True Day/Night Vision
- 2.8mm Fixed Lens
- Smart IR 30m (98ft.)
- Outdoor Rated IP67
- **Active Deterrence**: Integral Spotlight and 110dB Siren
- Smart Motion Detection
- Two-way talk: Integral speaker and microphone

### Included Components

- **ISV2-DOME-WIFI** Camera
- Mounting Plate and Template
- 12V Power Adapter
- Waterproof Connector
- Mounting Screws and Expansion Bolts
- Installation Guide (these instructions)

### Compatible Accessories

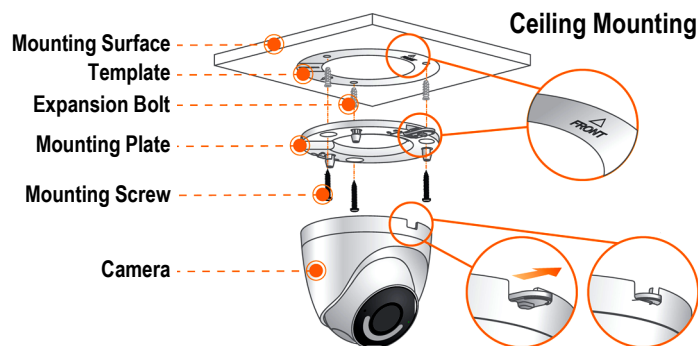
- ISV2-WIFI-BOX..... Round Back Box for ISV2-DOME-WIFI
- ISV2-DOME-BKT ..... Wall Mounting Bracket for ISV2-DOME-WIFI

### Quick Install Summary:

- Activate camera at [www.NapcoComNet.com](http://www.NapcoComNet.com).
- Install the iBridgeVideo app on the mobile device.
- Power camera.
- Connect the mobile device to a 2.4MHz Wi-Fi network.
- Launch the iBridgeVideo app and log in.
- Add camera to the app via the wireless method (Wi-Fi connection) or wired (hardwired) options in the app.
- Mount camera at desired location.

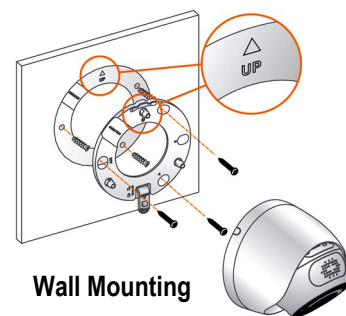
### Camera Mounting

The mounting surface must support a minimum of 3lbs.



1. Match the Template to the Mounting Plate holes to locate the correct mounting holes for proper camera position.

2. Affix the Template to ceiling or wall. For wall mounting, position the **UP** arrow at the top. Mark the 3 mounting holes.



3. Using a drill bit slightly smaller than the diameter of the Expansion Bolts, drill 3 holes into the mounting surface. Fully insert the 3 Expansion Bolts.

4. Secure the Mounting Plate using the 3 Mounting Screws inserted into the three Expansion Bolts.

5. Route the Power and Ethernet Cable: Connect the Waterproof Connector to the Ethernet plug. Snake both cables through the center of the Mounting Plate (drill a 3/4" hole) or run the cable through the notch in the Mounting Plate and along the mounting surface.



6. Align the notch in the Camera base with the front of the Mounting Plate. Push the Camera base into the Mounting Plate and slide away from the tab until it snaps securely in place.

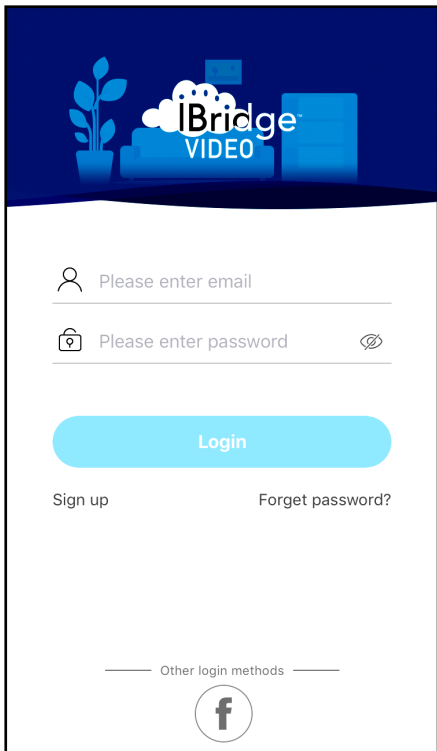
7. Manually adjust the Tilt, Pan angle and lens Rotation.



## Camera Wi-Fi Enrollment Using the App

First activate the camera(s) at [www.NapcoComNet.com](http://www.NapcoComNet.com), then perform the steps below. The camera must be powered and its green LED must be flashing continuously. Proceed as follows:

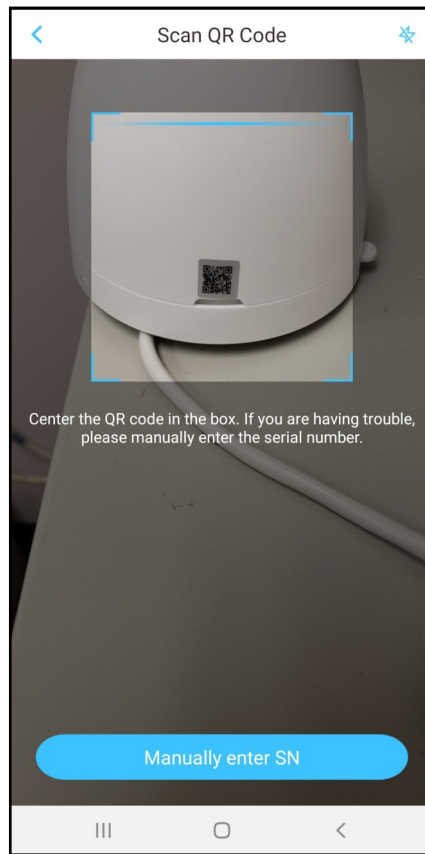
1. Connect the smart device to the local Wi-Fi network.
2. Open the iBridgeVideo app. Type a Username (full email address) and Password and tap **Login**.



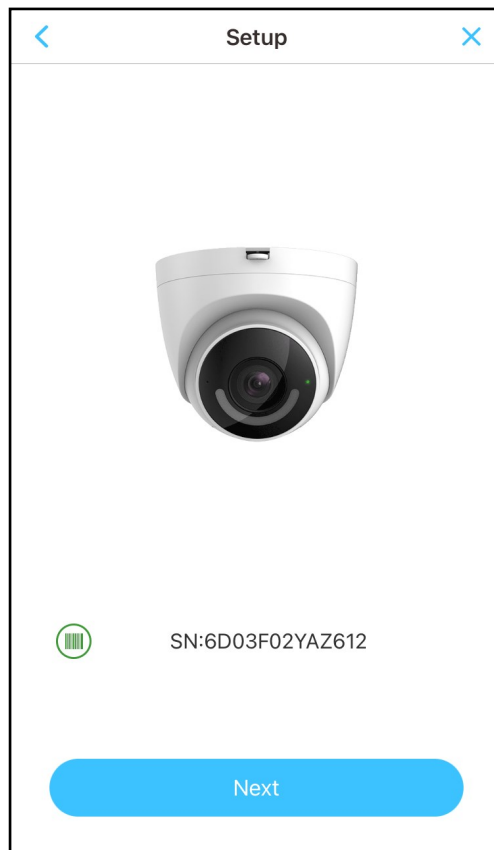
3. Tap "+" to add the camera.



4. Scan the QR code located on the base of the camera, then tap **OK**. If you have trouble scanning the code, tap **Manually enter SN** and type the serial number.

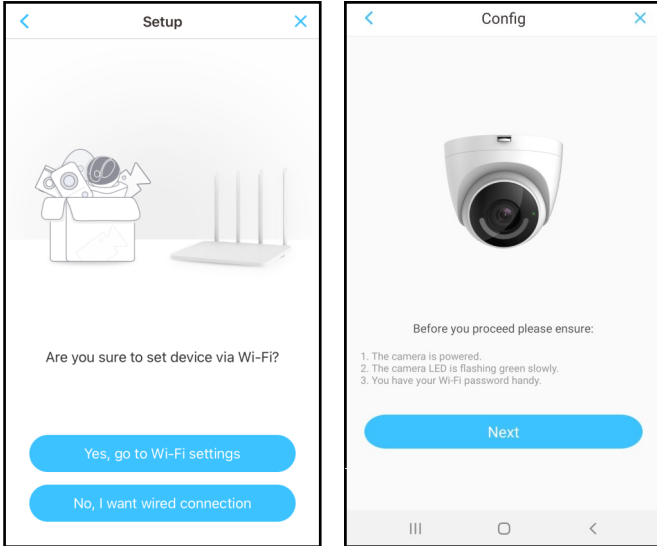


5. Tap **Next** to connect the camera to a network.

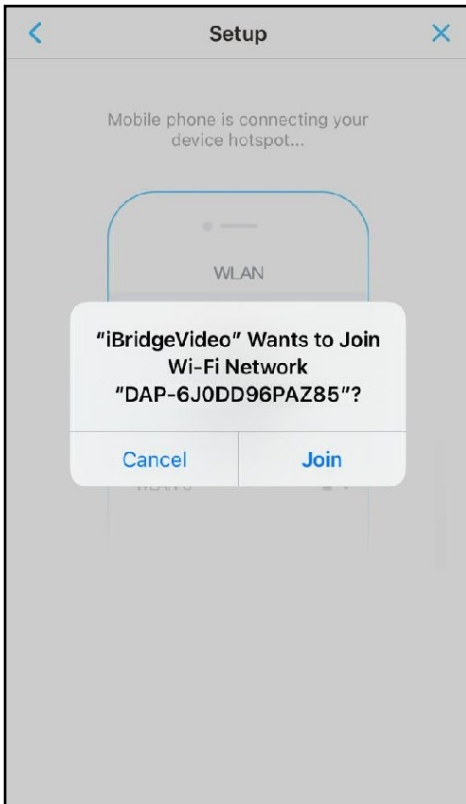


- The camera's green LED will be flashing, indicating it is not connected to a network.
  - If using a hardwired connection without Wi-Fi, tap **No, I want wired connection** (skip steps 7-10).
  - If using a Wi-Fi connection, in the screen below (left) tap **Yes, go to Wi-Fi settings**, then tap **Next**.

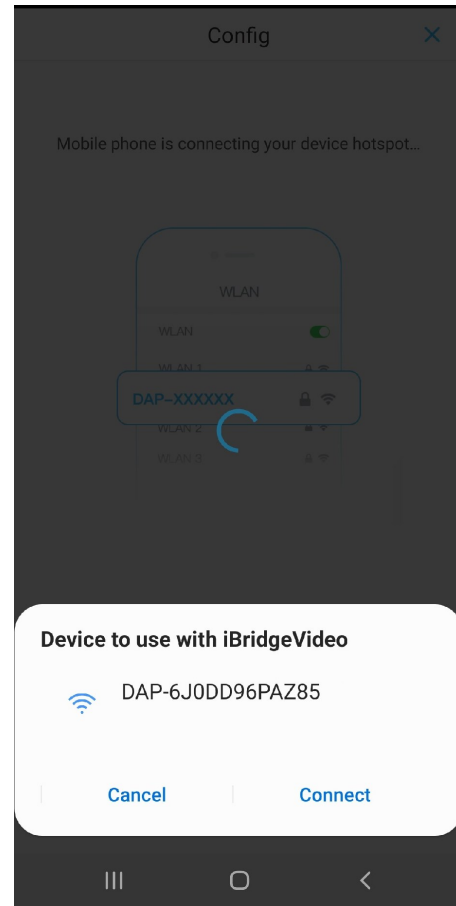
**Helpful hint:** Have the password ready for the Wi-Fi network that you want the camera to use.



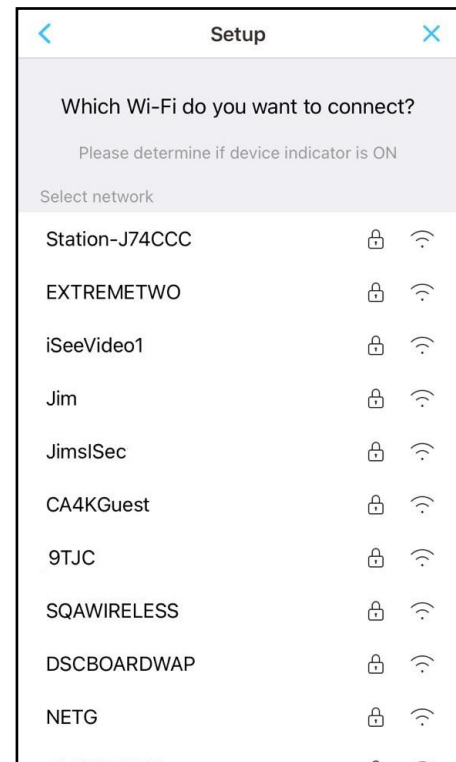
- The app will now prompt you to connect to the camera's hotspot. With iOS devices, the screen below will appear. Tap **Join** to continue.



With Android devices, the screen below will appear. Tap **Connect** to continue.

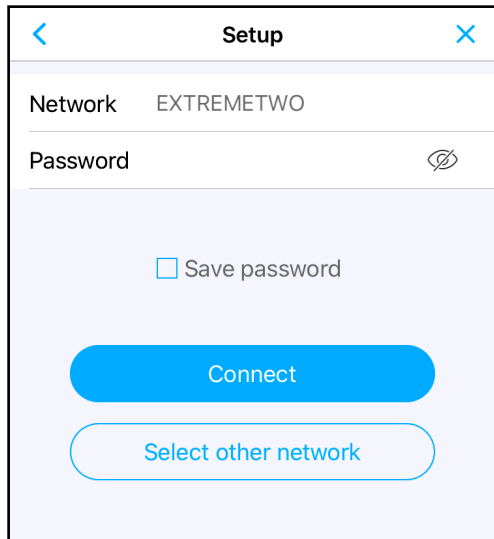


- Select the 2.4GHz Wi-Fi network that you want the camera to use. **Note:** 5GHz Wi-Fi is not supported.

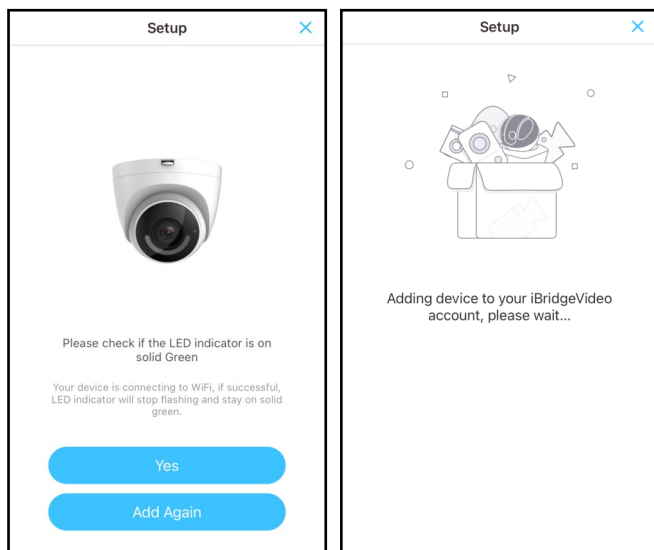


- Type the SSID password of the Wi-Fi network (tap the "eye" icon to the right of the **Password** field to display the characters). The app will remember this password if **Save password** is checked. When finished, tap **Connect** (the camera's LED will start to flash).

The password must be typed correctly or the camera will not connect to the wireless network. To select another network, tap **Select other network**.



- Wait for the Wi-Fi connection process to complete. If successful, the LED on the camera front will stop flashing and will turn on solid green. Tap **Yes** in the screen below (left) to continue. If unsuccessful, try again by tapping **Add Again** (it may take up to a minute to connect).

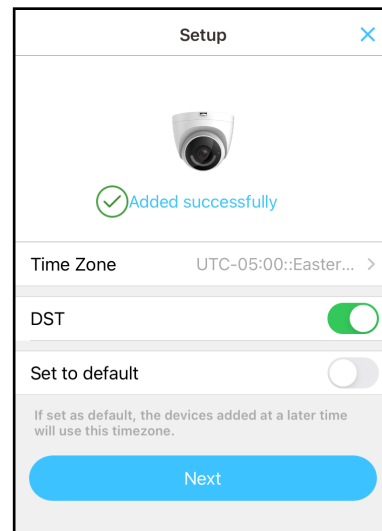


**If Camera Does Not Connect (LED keeps Flashing)**

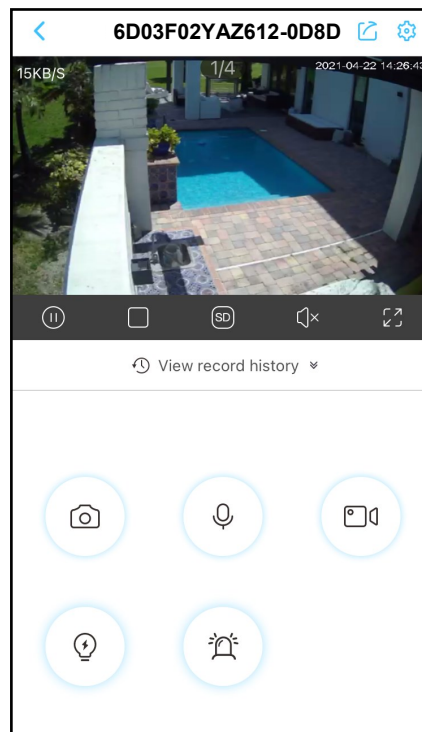
Check the Wi-Fi signal strength at the camera location using the smart device to ensure there is sufficient signal strength (3 bars or more is recommended). Also verify the Wi-Fi network password. If needed, tap the **Add Again** button to repeat steps 6-11.

- A successful connection will display the confirmation

screen (below). Confirm your Time Zone (tap the arrow to the right and select the from the pull-down list). You can also enable Daylight Saving Time (**DST**). To save these time settings in the app when connecting to future cameras, enable **Set to default** and tap **Next**.



- Live video feed will appear.



The circular buttons in the above image are:

**Top row, left to right:**

- Snapshot** - Saves a snapshot to your device.
- Microphone** - Enables 2-way communication.
- Recording** - Records live video to your device.

**Bottom row, left to right:**

- Spot light** - Enables camera spotlight for 30 seconds.
- Siren** - Triggers camera siren for 30 seconds.

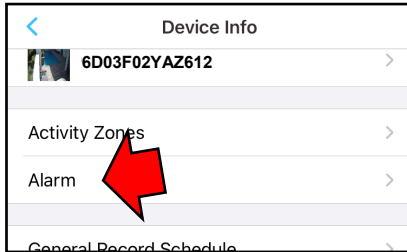
## Set Up Motion Detection

By analyzing and detecting changes in pixel properties, selecting Activity Zones allows the app to send push notifications and video clips when movement is sensed in a selected area.

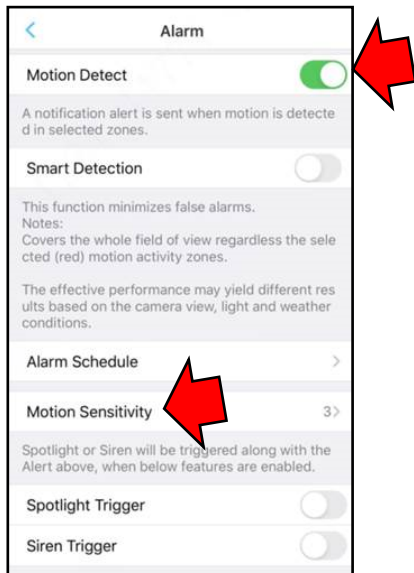
1. While viewing the camera live, open the **Camera Settings** screen (tap the "gear" icon).



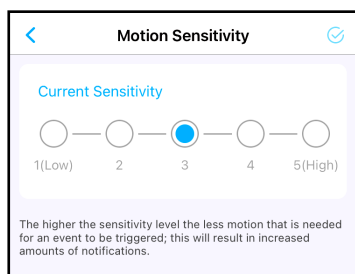
2. In the **Device Info** screen, tap **Alarm**.



3. Ensure **Motion Detect** is enabled, then tap **Motion Sensitivity**:

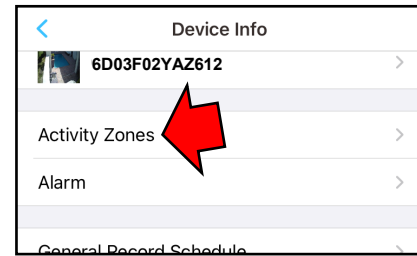


4. Use the screen below to adjust the **Motion Sensitivity** of the **Activity Zones** to be selected in step 6 (**Motion Sensitivity** can be adjusted at any time). The higher the sensitivity, the less motion needed to trigger an event. **Note:** Higher sensitivity may increase the number of notifications. Enable **Smart Detection** to help reduce false alarms caused by moving bushes, tree branches falling leaves, etc.

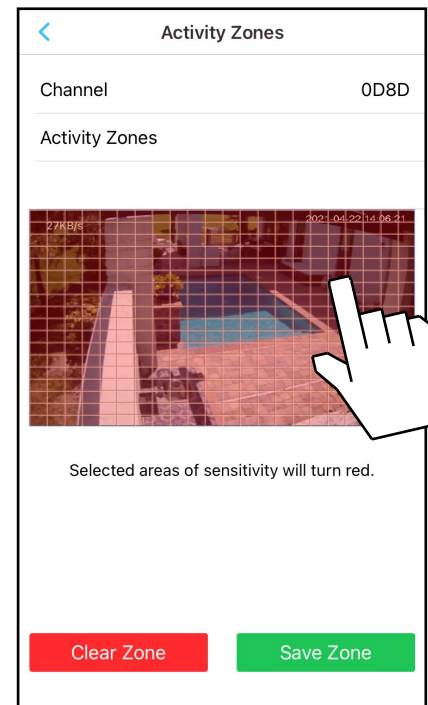


At the top, tap the check mark to save. Tap the "<" arrow to return to the **Device Info** screen.

5. In the **Device Info** screen, tap **Activity Zones**.



6. In the video image (see example image below) "tap and hold" to select the matrix boxes where you want the camera to detect changes. *The areas that will detect motion activity will turn red.*



To clear ALL red boxes, tap **Clear Zone** and start again.

7. When finished, tap **Create Zone** to save.

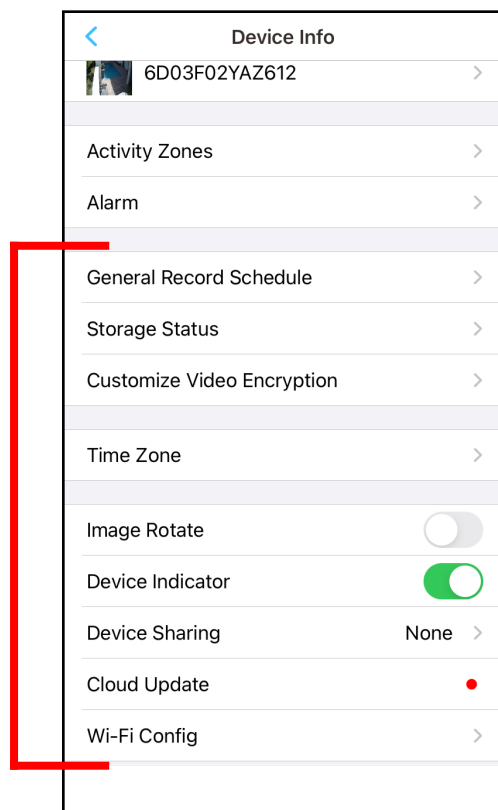
**Helpful Tip:** To avoid nuisance triggers, the selected red detection areas must be limited to areas of anticipated activity. Changes in pixels may be caused by blowing tree branches, falling leaves, motion floodlights, sun and shade changes caused by cloud cover, etc. Be sure to exclude (clear) these areas from the selected (red) detection areas.

### Smart Detection Notes:

1. Covers the whole field of view regardless the selected (red) motion activity zones.
2. The effective performance may yield different results based on the camera view light and weather conditions.

## Device Info Screen Features

The **Device Info** screen includes the following additional features:



**General Record Schedule:** Set a schedule for the internal SD card to continuously record video. When the SD card is full, the video overwrites the old recorded video to ensure continuous recording.

**Storage Status:** Check the status and remaining storage space of the internal SD card and in the Cloud.

**Customize Video Encryption:** Customize the video recording encryption settings.

**Device Indicator:** Turn on or turn off the camera status LED.

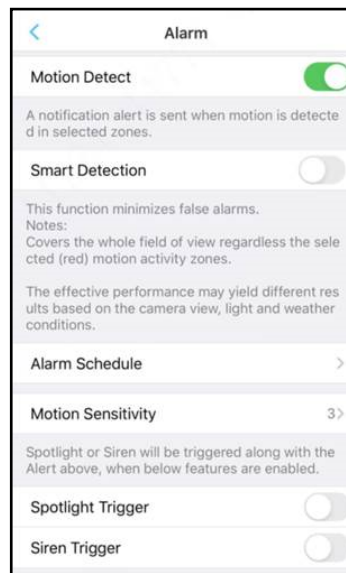
**Device Sharing:** View / change users authorized to share camera video.

**Cloud Update:** Allow software updates when available.

**Wi-Fi Config:** View / select a new Wi-Fi network.

## Alarm Screen Features

The **Alarm** screen includes the following additional features:



**Smart Detection:** Enable the smart motion detection feature to help reduce false alerts.

**Alarm Schedule:** Set a schedule to select when to allow motion detection events (default setting is enabled 24/7)

**Spotlight Trigger:** Enable / disable camera spotlight triggered upon a motion event (component of *Active Deterrence* feature).

**Siren Trigger:** Enable / disable 30-second 110dB siren triggered upon a motion event (component of *Active Deterrence* feature).

## Format the SD Card

The SD card is used to store local video recordings. To format the card:

1. In the Device "Home" screen, tap the ">" icon to open the **Device Info** screen.  
**Note:** You can tap the ">" icon or anywhere on the title bar to open this screen.
2. Tap **Storage Status**.
3. Tap the blue **Format Storage Device** button.  
The SD card will be formatted within a few seconds.

**Note:** If the message "SD card not found" or "Device storage is 'OFF'", ensure the Micro SD card is installed properly and the ISV-DOME-WIFI is running the latest firmware.

## Reset to Factory Default Settings

The camera MUST be powered before proceeding. Press and hold the **Reset** button for 12 seconds or until you hear a beep, then release button.

## LED Status Indications

When the camera is powered and operating normally, the green LED remains on solid. Other LED indications are:

- Off ..... Camera powered off or reboot (after reset) in progress
- Red On ..... Boot in progress or camera error
- Green Flashing ..... Waiting for network connection
- Red Flashing ..... Network connection failed
- Green/Red
- Alternate Flashing ..... Firmware update in progress
- Green Solid ..... Normal operation

## Specifications

- Video Compression ..... H.265/H.264
- Image Sensor ..... 1/2.7" 2 Megapixel Progressive CMOS
- Lens ..... 2.8mm
- Field of View ..... Field of View : 114°(H), 59°(V), 135°(D)
- Night Vision ..... 30m (98ft) Distance

- Audio Compression ..... G.711
- Audio Input ..... Omnidirectional Mic
- Audio Output ..... Built-in Speaker
- Bidirectional Talk ..... Supports 2-way Bi-directional talk

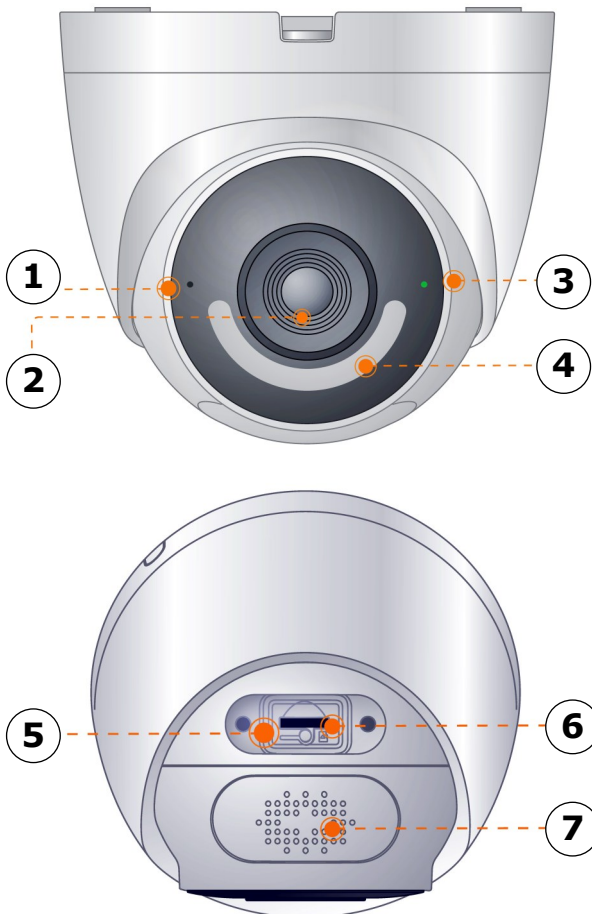
## Network








- Wi-Fi ..... IEEE802.11b/g/n, 2.4GHz
- Ethernet Port ..... 1x100 Mbps

## General

- Ingress Protection ..... IP67
- Memory Slot ..... Micro SD SDHC 32GB included; maximum size 256GB
- Installation ..... Surface
- Material ..... Metal + Plastic
- Power Supply ..... 12VDC / 1A
- Power Consumption ..... Standby<3W, Work <7W
- Working Environment ..... -30°C ~ + 60°C (-22°F ~ 140°F)
- Dimensions ..... 109.9 x 109.9 x 102.2mm (4.3 x 4.3 x 4 inches)
- Weight ..... 352g (0.78lb.)
- Working Humidity ..... 10% ~ 95%RH

## ISV-DOME-WIFI Parts



-  **1. Microphone**
-  **2. Camera Lens**
-  **3. LED Indicator**
-  **4. Spotlight**
-  **5. Reset Button**
-  **6. Micro SD Card Slot\***
-  **7. Speaker**

\*SD card included.

# NAPCO LIMITED WARRANTY

NAPCO SECURITY TECHNOLOGIES, INC. (NAPCO) warrants its products to be free from manufacturing defects in materials and workmanship for *twelve months* following the date of manufacture. NAPCO will, within said period, at its option, repair or replace any product failing to operate correctly without charge to the original purchaser or user.

This warranty shall not apply to any equipment, or any part thereof, which has been repaired by others, improperly installed, improperly used, abused, altered, damaged, subjected to acts of God, or on which any serial numbers have been altered, defaced or removed. Seller will not be responsible for any dismantling or reinstallation charges.

THERE ARE NO WARRANTIES, EXPRESS OR IMPLIED, WHICH EXTEND BEYOND THE DESCRIPTION ON THE FACE HEREOF. THERE IS NO EXPRESS OR IMPLIED WARRANTY OF MERCHANTABILITY OR A WARRANTY OF FITNESS FOR A PARTICULAR PURPOSE. ADDITIONALLY, THIS WARRANTY IS IN LIEU OF ALL OTHER OBLIGATIONS OR LIABILITIES ON THE PART OF NAPCO.

Any action for breach of warranty, including but not limited to any implied warranty of merchantability, must be brought within the six months following the end of the warranty period. IN NO CASE SHALL NAPCO BE LIABLE TO ANYONE FOR ANY CONSEQUENTIAL OR INCIDENTAL DAMAGES FOR BREACH OF THIS OR ANY OTHER WARRANTY, EXPRESS OR IMPLIED, EVEN IF THE LOSS OR DAMAGE IS CAUSED BY THE SELLER'S OWN NEGLIGENCE OR FAULT.

In case of defect, contact the security professional who installed and maintains your security system. In order to exercise the warranty, the product must be returned by the security professional, shipping costs prepaid and insured to NAPCO. After repair or replacement, NAPCO assumes the cost of returning products under warranty. NAPCO shall have no obligation under this warranty, or otherwise, if the product has been repaired by others, improperly installed, improperly used, abused, altered, damaged, subjected to accident, nuisance, flood, fire or acts of God, or on which any serial numbers have been altered, defaced or removed. NAPCO will not be responsible for any dismantling, reassembly or reinstallation charges.

This warranty contains the entire warranty. It is the sole warranty and any prior agreements or representations, whether oral or written, are either merged herein or are expressly cancelled. NAPCO neither assumes, nor authorizes any other person purporting to act on its

behalf to modify, to change, or to assume for it, any other warranty or liability concerning its products.

In no event shall NAPCO be liable for an amount in excess of NAPCO's original selling price of the product, for any loss or damage, whether direct, indirect, incidental, consequential, or otherwise arising out of any failure of the product. Seller's warranty, as hereinabove set forth, shall not be enlarged, diminished or affected by and no obligation or liability shall arise or grow out of Seller's rendering of technical advice or service in connection with Buyer's order of the goods furnished hereunder.

NAPCO RECOMMENDS THAT THE ENTIRE SYSTEM BE COMPLETELY TESTED WEEKLY.

**Warning:** Despite frequent testing, and due to, but not limited to, any or all of the following; criminal tampering, electrical or communications disruption, it is possible for the system to fail to perform as expected. NAPCO does not represent that the product/system may not be compromised or circumvented; or that the product or system will prevent any personal injury or property loss by burglary, robbery, fire or otherwise; nor that the product or system will in all cases provide adequate warning or protection. A properly installed and maintained alarm may only reduce risk of burglary, robbery, fire or otherwise but it is not insurance or a guarantee that these events will not occur. CONSEQUENTLY, SELLER SHALL HAVE NO LIABILITY FOR ANY PERSONAL INJURY, PROPERTY DAMAGE, OR OTHER LOSS BASED ON A CLAIM THE PRODUCT FAILED TO GIVE WARNING. Therefore, the installer should in turn advise the consumer to take any and all precautions for his or her safety including, but not limited to, fleeing the premises and calling police or fire department, in order to mitigate the possibilities of harm and/or damage.

NAPCO is not an insurer of either the property or safety of the user's family or employees, and limits its liability for any loss or damage including incidental or consequential damages to NAPCO's original selling price of the product regardless of the cause of such loss or damage.

Some states do not allow limitations on how long an implied warranty lasts or do not allow the exclusion or limitation of incidental or consequential damages, or differentiate in their treatment of limitations of liability for ordinary or gross negligence, so the above limitations or exclusions may not apply to you. This Warranty gives you specific legal rights and you may also have other rights which vary from state to state.

## FCC Statement

1. This device complies with Part 15 Of the FCC Rules. Operation is subject to the following two conditions: (1) this device may not cause harmful interference, and (2) this device must accept any interference received, including interference that may cause undesired operation.
2. The user's manual or instruction manual for an intentional or unintentional radiator shall caution the user that changes, or modifications not expressly approved the party responsible for compliance could void the users authority to the equipment. In cases where the manual is provided only in a form other than paper, such as on a computer disk or over the Internet, the information required by this section may be included in the manual in that alternative form, provided the user can reasonably be expected to have the capability to access information in that form.
3. (b) For a Class B digital device or peripheral, the instructions furnished the user shall include the following or similar statement, placed in a prominent location in the text of the manual: **NOTE:** This has been tested and found to comply with the limits for a Class B digital device, pursuant to Part 15 of the FCC Rules. These limits are designed to provide reasonable protection against harmful interference in a residential installation. This equipment generates, uses and can radiate radio frequency energy and, if not installed and used in accordance with the instructions, may cause harmful interference to radio communications. However, there is no guarantee that interference will not occur in a particular installation. If this equipment does cause harmful interference to radio or television reception, which can be determined by turning the equipment off and on, the user is encouraged to try to correct the interference by one or more of the following measures:
  - Reorient or relocate the receiving antenna.
  - Increase the separation between the equipment and receiver.
  - Connect the equipment into an outlet on a circuit different from that to which the receiver is connected.
  - Consult the dealer or an experienced radio/TV technician help.
4. RF exposure warning  
This equipment must be installed and operated in accordance with provided instructions and the antenna(s) used for this transmitter must be installed to provide a separation distance of at least 20cm from all persons and must not be co-located or operating in conjunction with any other antenna or transmitter. End-users and installers must be provided with antenna installation instructions and transmitter operating conditions for satisfying RF exposure compliance.