

## [TX3 Series]



TX3-T10-S Silver



## Description

Mircom's TX3-T10 Touch Access System is a cutting-edge solution designed to provide a modern, visually stunning, and intuitive user experience. With a vandal and weather-resistant enclosure and innovative features, this system is fully customizable for occupant and visitor access control in various settings.

The system introduces several innovative features to deliver a comprehensive solution for occupant and visitor access control in condominiums, apartment buildings, office buildings, gated communities, and industrial buildings.

The 10" full color touch display provides wide viewing angles, which is sure to impress visitors & occupants alike.

TX3-T10's built in controller manages access for two doors via two relays and supports two readers: there is one built in proximity card reader with provision for an external card reader.

**Residents:** Enter the building using an access card or entry code, receive video calls via the MiEntry app, and remotely unlock doors and gates. Generate QR codes through the MiEntry app for temporary access for visitors and delivery personnel.

**Visitors:** Call residents or reception, scroll through a list of names and groups, search for a specific name to call, and utilize QR codes for quick dialing or temporary access.

**Property Managers:** Review event logs, issue or restrict access and have a peace of mind with vandal and weather-resistant design.

**Installers:** Quick easy installation, configuration, and updates.

## Features

### Visual Excellence

- Full-color 10" touch display for an impressive visual experience.
- Dark and light themes automatically adjust to ambient light levels, ensuring optimal readability day and night.
- Super bright LCD (1000 nits); easy to view in outdoor daylight.
- 4mm Front glass for durability.

### Intuitive Interface

- Call button, scrolling name directory and name grouping for an easy and intuitive call interface.
- Two built-in keyboard layouts (Full QWERTY, or QWERTY (English & French) + Numpad)

### Advanced Communication

- Enables communication through traditional phone lines (PSTN) or the Mircom MiVoIP cloud service for seamless VoIP connectivity.
- Compatible with the Mircom MiEntry app, providing one-way video and two-way audio directly to mobile devices.
- Speaker and dual microphones with noise reduction and beam-forming technology for clear two-way audio call.
- VGA video camera for video calls.
- Quick dial via QR code.

### Security

- Built-in proximity card reader and interface for an external card reader.
- QR code scanner enables temporary visitor access by scanning QR codes generated through the MiEntry app.
- Built in controller supports two doors via two relays
- Tamper switch alarm detects any unauthorized opening of the intercom panel.
- Elevator restriction capability is available for buildings requiring a higher level of security.
- Vandal and weather-resistant enclosure for reliable indoor and outdoor use.

### Customization and Media

- Programmable through the TX3 local configurator via an Ethernet connection.
- Conveniently load media content in JPEG, PNG, GIF, and MP4 formats using our intuitive TX3-Configurator. This content can be displayed as an eye-catching screensaver or used for advertising.
- Group residents in residential or mixed-use buildings, or employees in office buildings.

### Connectivity and Power

- Programmable 4 supervised inputs and 2 outputs.
- Powered by PoE+ (IEEE802.3at/Type2) or an external power supply (24-48 VDC / 30 W).

### Mounting and color options

- Two colors to choose from: silver or space gray.
- Suitable for both surface and flush mounting options.

### Comprehensive Warranty

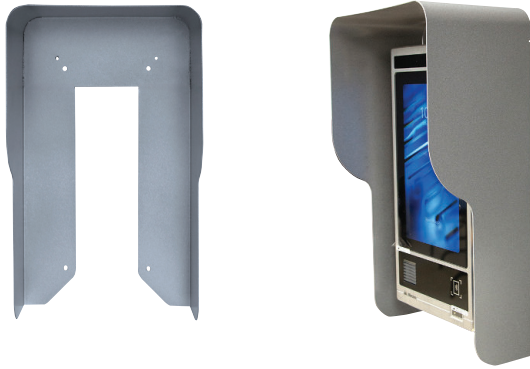
- Up to a 3-year out of the box warranty

### Compliance

- FCC Certified
- IP65 Weatherproof

## Accessories

### Rain Hood



#### TX3-T10RH Rain Hood

Although TX3-T10 is weather-resistant and IP65 rated, adding rain hood can provide extra protection. It is highly recommended for outdoor applications.

Dimensions	17.5" H x 10.2" W x 6" D (44.45 x 25.9 x 15.24 cm)
Weight	7.15 lbs (3.24 kg)
Material	Galvanized steel
Color	Silver

### Trim Rings



#### TX3-T10TR

A trim ring is a finishing accessory used when installing TX3-T10 wall-mounted device.

Dimensions	19" H x 13" W x 0.063" D (48.26 x 33 x 0.16 cm)
Weight	2.95 lbs (1.3 kg)
Material	Galvanized steel
Color	Silver

### Pedestal Stand



#### TX3-T10PS Pedestal Stand

T10 pedestal stand is a sturdy, free-standing mount—made of steel that lets you install a station at the correct location when you don't have a wall or gatepost to attach it to. It can also host the rain hood for outdoor applications (rain hood need to be ordered separately).

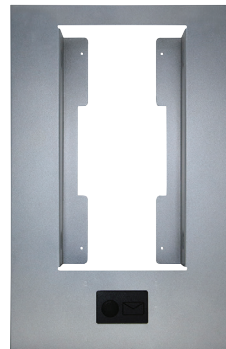
Dimensions	63.12" H x 4" W x 4" D (160.3 x 10.16 x 10.16 cm)
Weight	60.63 lbs (27.5 kg)
Material	Galvanized steel
Color	Black



#### TX3-T10TRS

Surface mount trim ring with provision for installing a postal lock or external reader.

Dimensions	22.8" H x 12" W x 2.7" D (57.9 x 30.4 x 7 cm)
Weight	6.8 lbs (3 kg)
Material	Galvanized steel
Color	Silver

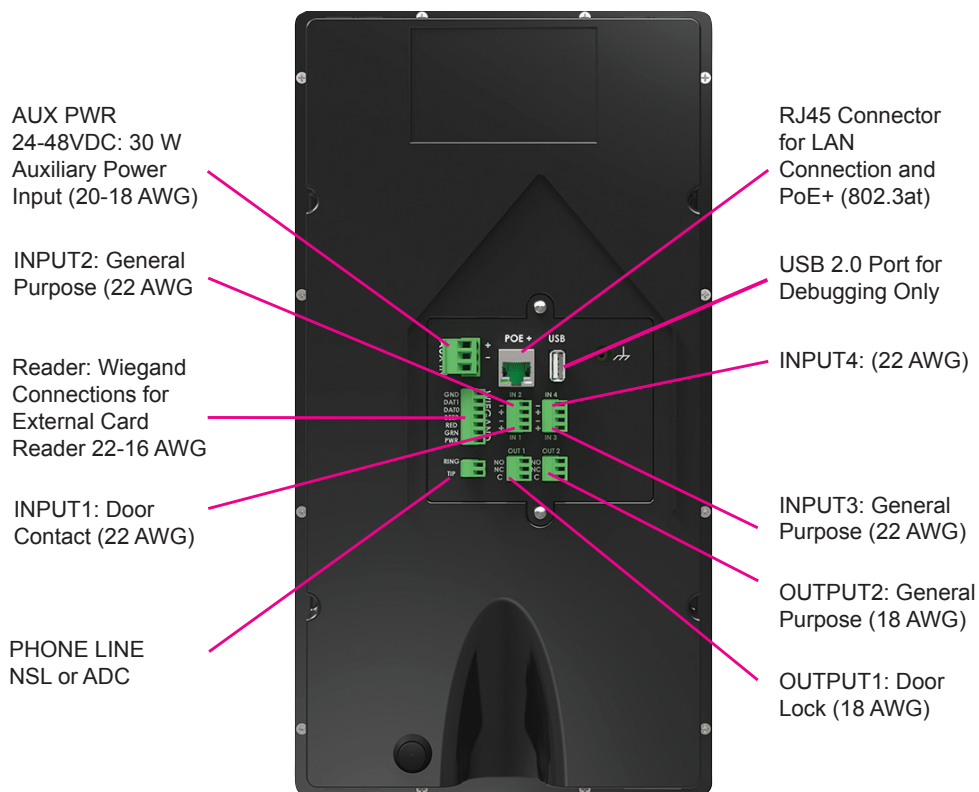
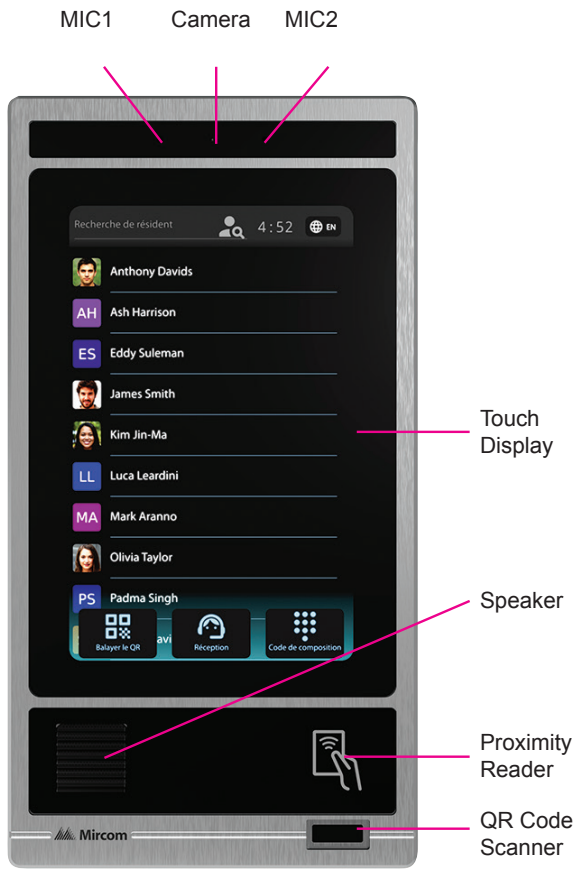


#### TX3-T10TRF

Flush mount trim ring with provision for installing a postal lock or external reader.

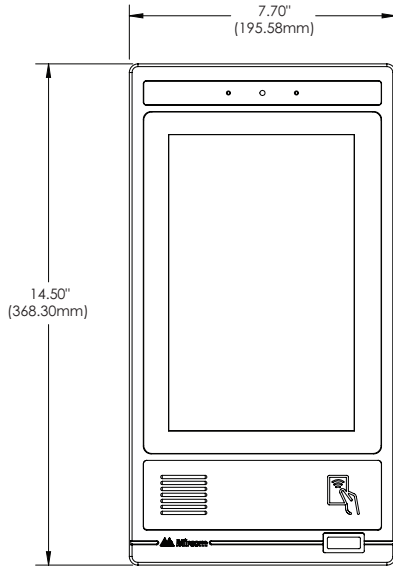
Dimensions	20.3" H x 13.1" W x 2.15" D (51.5 x 33.2 x 5.4 cm)
Weight	4.4 lbs (2 kg)
Material	Galvanized steel
Color	Silver

# Specifications

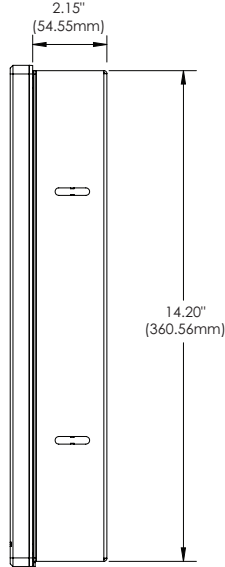


## Dimensions

### TX3-T10

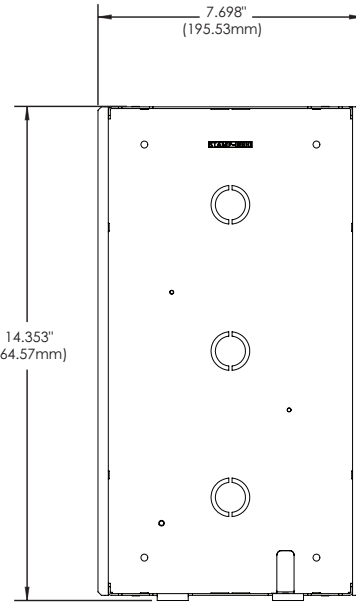


Front View

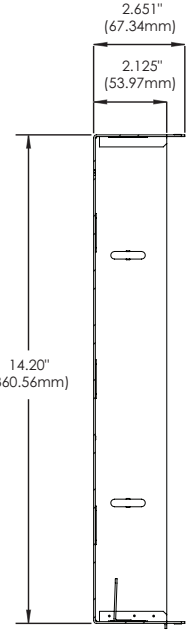


Side View

### Backbox



Front View



Side View

## Technical Specifications

<b>Dimensions</b>	<b>Weight</b>
14.5" H x 7.7" W x 2.2" D (36.8 cm x 19.6 cm x 5.6 cm)	5.6 lb (2.5 kg)
<b>System</b>	<b>Connections</b>
Quadcore multimedia microprocessor	Programmable 4 supervised inputs and 2 outputs
2 GB RAM	1 phone line connection
10/100/1000 Ethernet	1 auxiliary power input
1.5GB of storage	1 Ethernet 10/100/1000 PoE+ port
H.264 Video Codec	1 USB 2.0 port
G.711 $\mu$ -law audio codec	1 Wiegand connection for optional reader
<b>Display</b>	<b>Power</b>
10.1" touch screen with Vandal-resistant 4mm glass	Powered by PoE+ (IEEE802.3at/Type2)
Brightness: 1000 nits	Auxiliary Power: 24-48 VDC / 30 W
<b>Proximity Reader</b>	<b>Backbox</b>
Built-in 125 kHz proximity reader	18Ga Steel, Painted, black
Widely supported 26-bit Wiegand format	Dimensions: 14.5" H x 7.7" W x 1.93" D (36.8 cm x 19.6 cm x 5 cm)
<b>QR Code Scanner</b>	<b>Capacity</b>
For quick and temporary credential	2000 names
<b>Speaker</b>	<b>Audio</b>
2 W nominal, 4 W maximum	Audio system with Analog Microphones, 3.1W AB-class Amplifier
<b>Operating Temperature</b>	<b>Camera</b>
-30° C to 50° C	5 MP camera with autofocus and MIPI Interface
<b>Controller</b>	<b>Compliance</b>
Built in controller manages access for two doors via two relays and supports two readers: one built in proximity card reader and has a port for an external card reader, additional doors will require additional TX3 controllers.	FCC Certified IP65 Weatherproof

## Ordering Information

Model	Description
TX3-T10-S	Silver 10" Touch screen video intercom system
TX3-T10-G	Space Gray 10" Touch screen video intercom system
<b>Essential Accessories</b>	
<b>Power Supply (Required if PoE+ power is not available, Separate Order)</b>	
TX3-PS24-5AF	Switching power supply with filter for FCC compliance and chassis, 24VDC, 156 Watt, 5A
<b>Rain Hood (Highly recommended for out door application)</b>	
TX3-T10RH	T10 Rain Hood for rain and sun protection
<b>Pedestal Stand (optional)</b>	
TX3-T10PS	T10 Pedestal stand with mounting provision for a rain hood
<b>Trim Rings (optional)</b>	
TX3-T10TR	T10 Trim Ring frame to cover any existing larger opening, 19" x 13"
TX3-T10TR15	T10 Trim Ring frame to cover Touch 15" panel larger opening
TX3-T10TRS	T10 Trim ring with postal lock provision - surface mount
TX3-T10TRF	T10 Trim ring with postal lock provision - flush mount
<b>Postal Lock (optional)</b>	
TX3-PL-ENCL	Postal Lock Enclosure, Surface Mount
<b>Essential Cloud Services</b>	
<b>Subscription Services (optional)</b>	
MiEntry	Mobile App to verify guest identities with live video and audio call, grant access to the building securely and generate a QR code to enable temporary visitor or Courier access
MiVISION	Cloud based configuration and monitoring solution to monitor and control site's TX3 System Devices
MiVoIP	VoIP solution, designed to replace traditional phone lines, providing a more economical and efficient communication solution.
<b>Optional Accessories</b>	
<b>Add-on Access Control Components</b>	
TX3-CX-1	Single Door Controller, PoE, single gang mount.
TX3-CX-2-A	Two Door Controller in a grey metal lockable cabinet
TX3-CX-4-A	Four Door Controller Panel with IP module
TX3-PCR-35	Mobile-Ready 2.4-GHz frequency/Contactless Reader 125-kHz frequency (single gang mount and mullion mount)
TX3-PCR-620	Mullion-Mount Mobile-Ready Proximity Reader and Keypad
TX3-PCR-640	Single-Gang Wall Switch Box Mount Mobile-Ready Proximity Reader and Keypad
TX3-CSR-35	Mobile-Ready 2.4-GHz frequency/Contactless Smartcard Reader 13.56-MHz frequency (single gang mount and mullion mount)
TX3-CSR-6.2	Mullion-Mount Mobile-Ready Contactless Smartcard Reader and Keypad
TX3-CSR-6.4	Single-Gang Wall Switch Box Mount Mobile-Ready Contactless Smartcard Reader and Keypad
TX3-CMC-2	Mobile Smartphone Credential, 2.4-GHz frequency
CS-MIR-0-0	Clam Shell Proximity Card 125 kHz, must be ordered in package of 25
KT-MIR-0-0	Key Tag (Fob) 125 kHz proximity, must be ordered in package of 10
TX3-DM1-3	Card MIFARE 13.56 MHz, must be ordered in package of 25
TX3-DK1-3	Key Tag (Fob) MIFARE 13.56 MHz, must be ordered in package of 10
TX3-CSK-2	High-Security Key Fob-Style Tag, 13.56-MHz frequency (packaged in groups of 10 pieces)
TX3-CSM-2P	High-Security ISO-Style Composite Card, 13.56-MHz frequency (packaged in groups of 10 pieces)



### Canada

25 Interchange Way Vaughan, ON L4K 5W3  
Telephone: (905) 660-4655 | Fax: (905) 660-4113

### U.S.A.

4575 Witmer Industrial Estates Niagara Falls, NY 14305  
Toll Free: (888) 660-4655 | Fax Toll Free: (888) 660-4113

www.mircom.com

This document is provided by Mircom Technologies Ltd., MGC Systems Corp., or their affiliates, subsidiaries and brands, for convenience or marketing only and does not describe products or services technically. For technical information refer to technical manuals. We do not make representations or warranties regarding this information, including as to completeness or accuracy. We may change these contents at any time and reserve all rights in the contents, including copyrights, trademarks and other intellectual property.

CAT. 6595

Page 5 of 5

Rev. 5