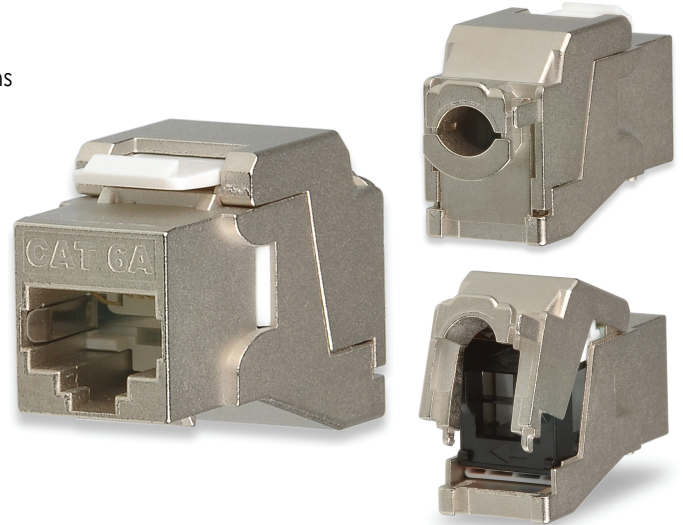


Category 6A Screened Toolless Keystone Jacks

KEY FEATURES

- Exceeds ANSI/TIA-568-C.2 component performance specifications
- Meets IEEE 802.3an 10 Gigabit Ethernet transmission requirements
- Overall solid-metal shielding design for 360° screen coverage
- Integrated toolless termination cap eliminates the need of any special tools
- Improved wire retention and ease of termination with rear 110 type contacts
- Easy-to-read T568A/B wiring scheme color-coded label
- Compatible with Signamax screened snap-in patch panels and work area faceplates



The Signamax Category 6A Screened Toolless Keystone Jacks have been designed to meet the need for today's high-bandwidth applications. These connectors are slim in profile for the highest density applications and terminate with the integrated termination cap of the connector.

The contact design provides enhanced plug-to-jack connection integrity and protects against damage caused by insertion of 4- or 6-position plugs. This screened toolless jack is also rated for a minimum of 750 plug insertions providing for the highest level of system reliability.

Category 6A Screened Toolless Keystone Jacks

PART NUMBER	DESCRIPTION
KJS458TL-C6AC	Category 6A Screened Toolless Keystone Jack, T568A/B Wiring

SPECIFICATIONS

TRANSMISSION PERFORMANCE

ANSI/TIA-568-C.2: exceeds category 6A (1-500 MHz) component specifications

TRANSMISSION MEDIA

Unscreened twisted pair (U/UTP) or screened (U/STP, F/UTP, F/STP, S/UTP, S/STP, SF/UTP, SF/STP) twisted pair

Cable Diameter:

Min: 0.20" (5 mm)
Max: 0.35" (9 mm)

JACK TYPE

8p8c (8-position, 8-contact) "RJ45" style

WIRING SCHEME (See Figure 1)

ANSI/TIA-568-C.2: T568A & T568B
ISO/IEC 11801 2nd Ed.: 8-position pin/pair assignment (1-2/3-6/4-5/7-8)

WIRE GAUGE

22 to 24 AWG (0.644 to 0.511 mm)

ELECTRICAL

Insulation Resistance: Min 500 MOhm @ 100 Vdc

Dielectric Withstanding Voltage:

1,000 Vdc/ac peak contact-to-contact @ 60 Hz for 1 min
1,500 Vdc/ac peak contact-to-panel @ 60 Hz for 1 min

Spring Wire Contact Resistance: Max 20 mOhm

IDC Contact Resistance: Max 2.5 mOhm

Current Rating: See Figure 2

FOOTPRINT

Standard keystone footprint

CONSTRUCTION

Housing: Zinc-alloy (fully shielded)

Grounding post for 2.5 x 0.5 mm (0.110 x 0.020 in) female disconnect.

Jack Spring Wire: Phosphor bronze alloy plated with 50 µin of gold over 70 to 100 µin of nickel

IDC: 110 type, phosphor bronze alloy with 100 µin 100% tin alloy

MECHANICAL

Total Contact Force: Min 800 g for 8 wire leads

Retention: 50 N (11 lbf) for 60±5 s

Mating Cycle Life: Min 750 cycles

MOUNTING DIMENSIONS:

1.67" D x 0.58" W x 1.02" H (42.4 mm x 14.6 mm x 25.8 mm)

ENVIRONMENTAL CONDITIONS

Operating Temperature: 14 °F to 140 °F (-10 °C to 60 °C)

Storage Temperature: -40 °F to 158 °F (-40 °C to 70 °C)

Operating RH: 93% Max (non-condensing)

COMPLIANCE

ANSI/TIA-568-C.2, IEC 60603-7, FCC Part 68 Subpart F, UL 94V-0

APPLICATIONS

X.21, V.11, S0, ISDN, CSMA/CD 10BASE-T, 100BASE-TX, 100BASE-T4, 100BASE-T2, 1000BASE-T, 10GBASE-T, TR 4/16/100, 100BASE-VG, ATM LAN 25/51/155, TP-PMD

WARRANTY

5 - Year Limited Component

Figure 1: Wiring Schemes

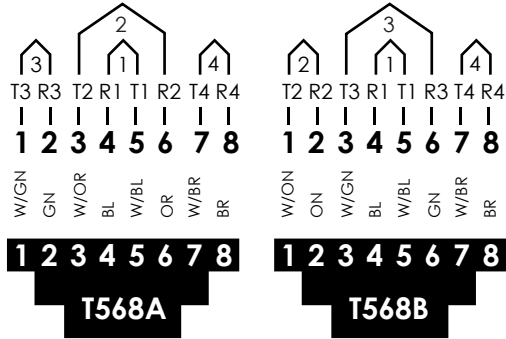


Figure 2: Current Rating

