



HURST

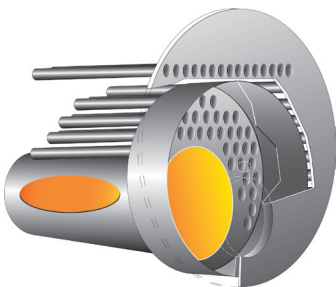
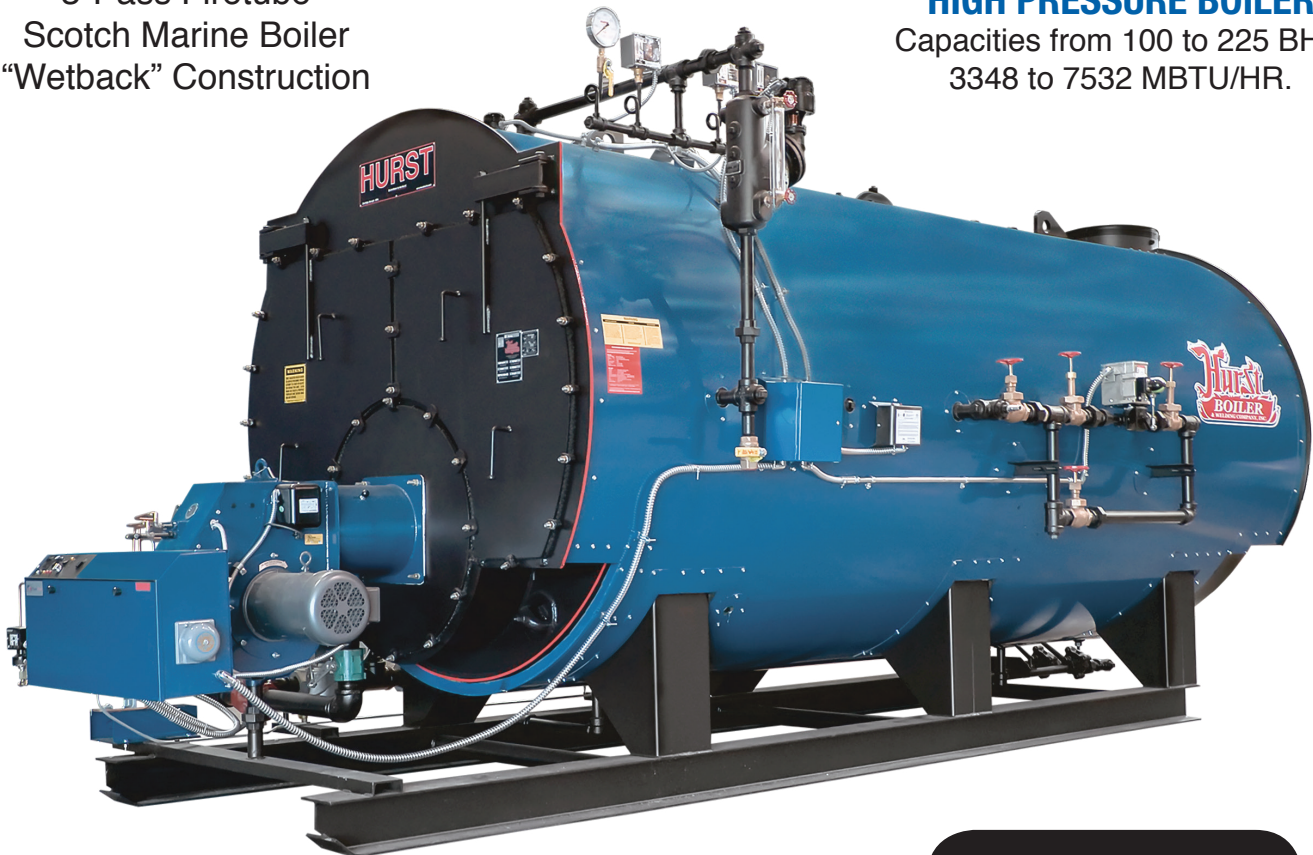
BOILER & WELDING CO., INC.

AVAILABLE WITH LOW NOX

HURST SERIES OHIO SPECIAL

3-Pass Firetube
Scotch Marine Boiler
"Wetback" Construction

HIGH PRESSURE BOILER
Capacities from 100 to 225 BHP.
3348 to 7532 MBTU/HR.



Large Wet-Back combustion
chamber with low heat release for
complete combustion

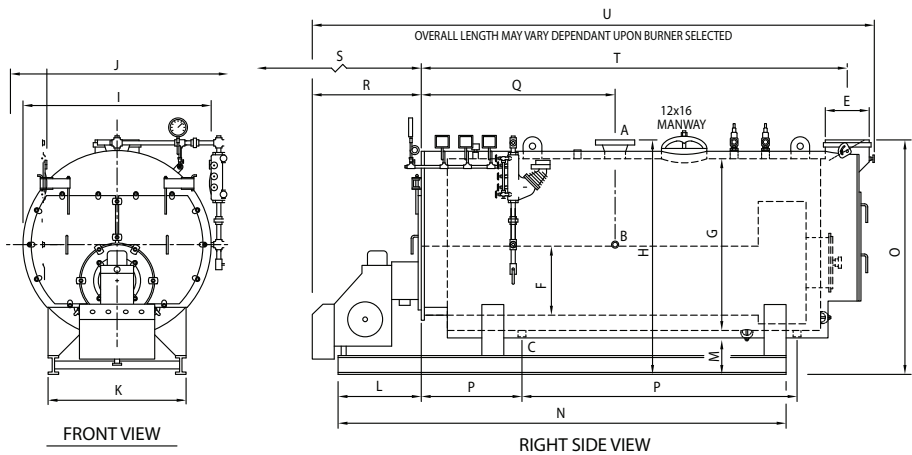
STEAM
Pressures to 300 PSI.

**SKID MOUNTED
MODULAR PACKAGED**

HURST PERFORMANCE SERIES BOILERS

Capacities from 100 to 225 H.P. 3347 to 7532 MBTU/HR.

- Efficient 3-Pass Wet Back Design.
- Easy Service.
- Low Furnace Heat Release.
- Large Furnace Volume For Ultimate Combustion Efficiency.
- U.L. Listed Controls & Trim.
- Flame Observation Ports - Front & Rear.
- Easy Access To Fireside Surfaces Ample Water Side Cleanout Openings.
- Fully Automatic Operation.
- U.L. Listed, Forced Draft Burners.
- Fuel Flexibility – Gas, Oil or Combination Gas/Oil.



WET BACK DESIGN

Eliminates Refractory Rear Door & Baffles Between Flue Gas Passes

BOILER SPECIFICATIONS

BOILER HORSEPOWER			100	125	150	175	200	225
HEATING SURFACE	FIRESIDE	SQ. FT.	358	358	358	358	358	358
STEAM OUTPUT	FROM & @ 212° F	LBS./HR.	3450	4313	5175	6037	6900	7762
GROSS OUTPUT		MBH	3348	4184	5021	5858	6695	7532
FIRING RATE GAS	1000 BTU/FT	CFH	4200	5250	6300	7350	8400	9450
FIRING RATE LP GAS	91,500 BTU	GPH	46	57	69	80.5	92	103
FIRING RATE #2 OIL	140,000 BTU	GPH	29.9	37.4	45	52.5	60	67.3
FIRING RATE #5 & #6 OIL	150,000 BTU	GPH	28	35	42	49	56	63
*NOTE: 1 OUTLET SIZE	150 PSI	IN	4	4	4	4	4	4
*NOTE: 2 OUTLET SIZE	15 PSI	IN	8	8	8	8	8	8
FEEDWATER CONNECTION SIZE		IN	1 1/4	1 1/4	1 1/4	1 1/4	1 1/4	1 1/4
BOTTOM BLOWDOWN SIZE	HIGH PRESS.	IN	1 1/2	1 1/2	1 1/2	1 1/2	1 1/2	1 1/2
BOTTOM BLOWDOWN SIZE	LOW PRESS. STM.	IN	2	2	2	2	2	2
STACK OUTLET SIZE	O.D.	IN	16	16	16	16	16	16
FURNACE	O.D.	IN	32	32	32	32	32	32
SHELL	I.D.	IN	60	60	60	66	66	66
SUPPLY HEIGHT		IN	81 3/4	81 3/4	81 3/4	88 3/4	88 3/4	88 3/4
WIDTH WITHOUT TRIM		IN	66 1/2	66 1/2	66 1/2	72 1/2	72 1/2	72 1/2
WIDTH WITH TRIM		IN	79	79	79	85	85	85
SKID WIDTH		IN	48	48	48	51	51	51
END OF SKID TO FRONT PLATE		IN	26 1/4	26 1/4	26 1/4	26 1/4	26 1/4	26 1/4
SHELL TO FLOOR		IN	15	15	15	16	16	16
SKID LENGTH		IN	144	144	144	144	144	144
STACK OUTLET HEIGHT		IN	82	82	82	89	89	89
BLOWDOWN LOCATIONS		IN	27 13/16 - 78	27 13/16 - 78	27 13/16 - 78	27 13/16 - 78	27 13/16 - 78	27 13/16 - 78
STEAM OUTLET LOCATION	15 PSI & UP	IN	62 5/16	62 5/16	62 5/16	62 5/16	62 5/16	62 5/16
BURNER PROJECTION	FROM FRONT PLATE	IN	44	45	45	45	45	45
TUBE REMOVAL, FRONT		IN	121	121	121	121	121	121
STACK OUTLET LOCATION		IN	136 13/16	136 13/16	136 13/16	136 13/16	136 13/16	136 13/16
APPROX. OVERALL LENGTH	STD. BURNER	IN	192	193	193	193	193	193
APPROX. SHIPPING WEIGHT	150 PSI	LBS	10050	10050	10150	10850	10850	10850
APPROX. SHIPPING WEIGHT	15 & 30 PSI	LBS	9250	9250	9350	10050	10050	10050
WATER CAPACITY	@NWL	GAL	685	685	685	893	893	893
WATER CAPACITY	FLOODED	GAL	885	885	885	1187	1187	1187
BOILER HORSEPOWER			100	125	150	175	200	225

NOTE 1: 300# ANSI FLANGE
NOTE 2: 150# ANSI FLANGE

ALL SIZES HAVE A 12" X 16" MANWAY, DIM. "R" & "U" DEPENDENT ON SPECIFIC BURNER MODEL USED

STANDARD FEATURES

All units are factory packaged with operating controls, relief valves, burner and fuel train. Installation is made simple in that only service connections are needed to place in operation. Flexible burner systems are available for firing natural gas, LP gas, #2-6 oil or combinations. High density mineral wool insulation assures lower radiant heat loss. In addition to meeting UL requirements, burner systems are optionally available to meet the requirements of FM, IRI, CSD-1 and others.

STEAM TRIM

Steam pressure gauge with syphon and test cock; combination low water cutoff and pump control (or feeder); water column gauge glass set and drain valve; probe-type Aux. L.W.C.O.; ASME safety relief valve(s); operating, high limit and modulating pressure controls.

 hurstboiler.com

HBC-09513
03/2018



 **HURSTBOILER**

100 Boilermaker Lane • Coolidge, GA 31738-0530
Tel: (229) 346-3545 • Fax: (229) 346-3874
email: info@hurstboiler.com