



HURST

BOILER & WELDING CO., INC.

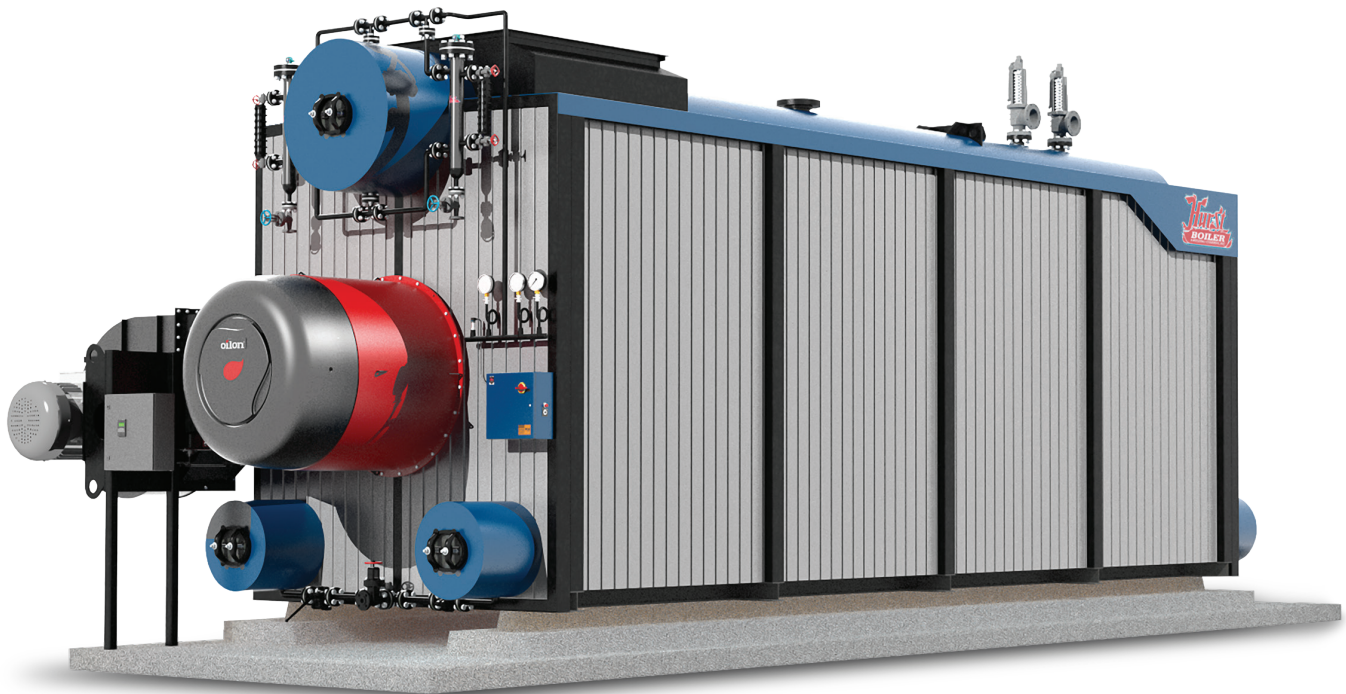
HURST SERIES 600-A

HIGH PRESSURE WATERTUBE BOILER

*Sealed Welded Furnace Design,
Exceptional Internal Steam Baffling System*

HIGH PRESSURE BOILER

Capacity Range
6900 - 150,000 PPH



*Fuel Flexibility
Gas, Oil, or Combination*

STEAM

Pressures to 250-1200 PSIG

HOT WATER

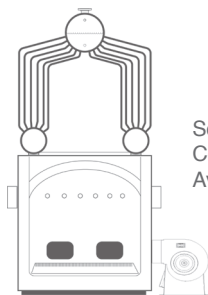
Pressures to 30-160 PSIG
Section I and Section IV

HURST PERFORMANCE SERIES BOILERS

HIGH PRESSURE BOILER

Capacity Range
6900 - 150,000 PPH

Larger Sizes Available Upon Request



Solid Fuel
Combustion
Available

Furnace Model

- All-Welded Membrane Construction
- UL Listed Burner
- Steam Superheater and Air Pre-heater Available
- Internal and External Economizers Available
- Industrial Grade Insulation and Lagging
- Rear Mounted Design Feedwater Manifolds



- Solid Fuel Fired Furnace Model Available
- UL Listed Controls and Trim
- Steam Pressure Design 250-1200 PSIG
- OSHA Factory Platforms / Ladders Available
- Mobile Trailer Mounted Packages Available
- Flexibility-Gas, Oil, Heavy Oil or Combination
- Large Furnace Volume for Ultimate Combustion Efficiency

FIREMASTER INTEGRATED CONTROL SYSTEM

Hurst FireMaster is a burner / boiler management system, which can be incorporated into an expandable supervisory system.



HBC-09546
09/2019



hurstboiler.com

HURST BOILER

100 Boilermaker Lane • Coolidge, GA 31738-3765
Tel: (229) 346-3545 • Fax (229) 346-3874
email: info@hurstboiler.com

