



HURST

BOILER & WELDING CO., INC.

HURST SERIES 400

3-PASS SCOTCH MARINE DESIGN
with Wetback Construction

AVAILABLE WITH LOW NOX

HIGH PRESSURE BOILER

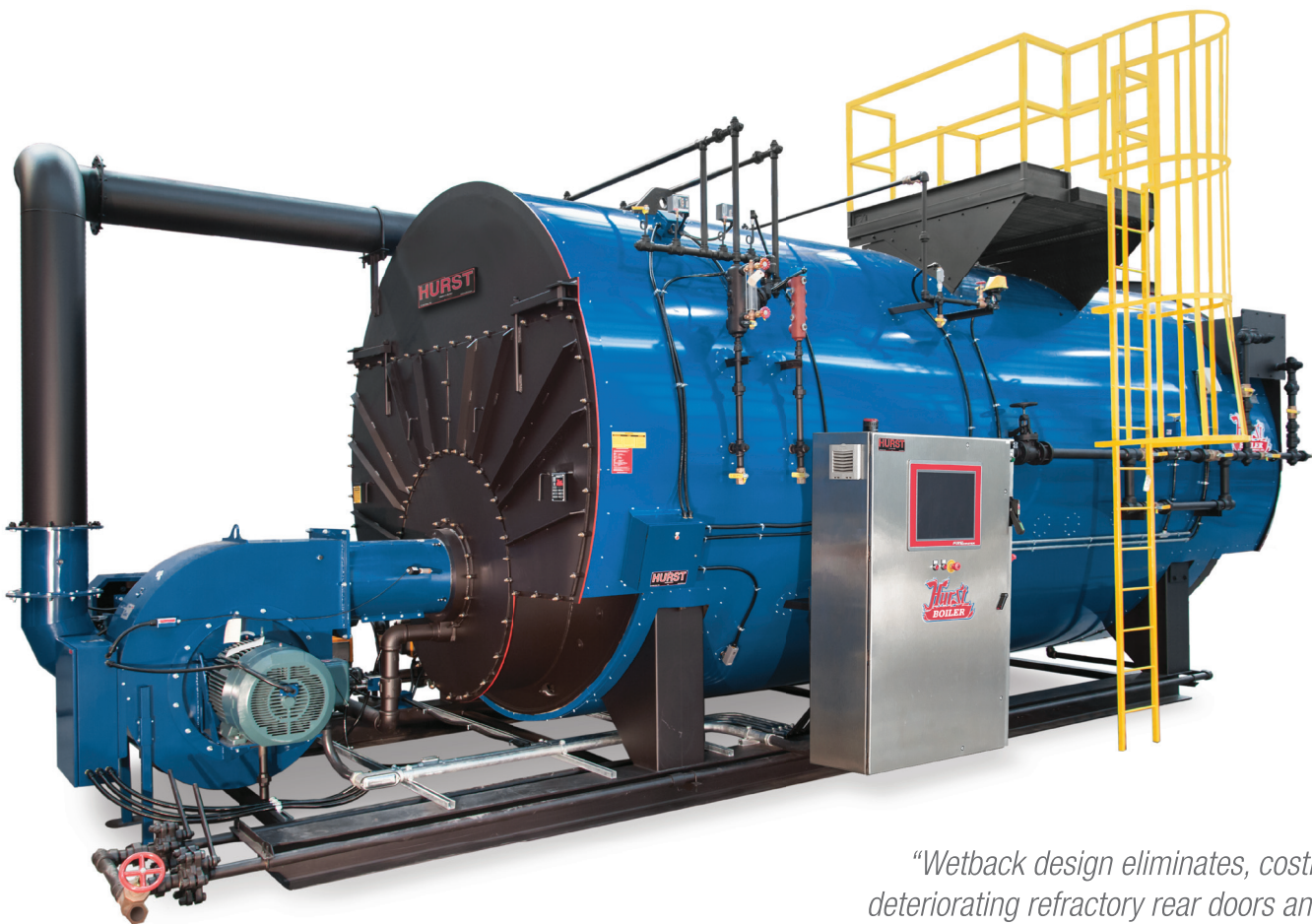
Capacities from 30 to 1,500 BHP.
1,004 to 50,213 MBTU/HR.

STEAM

Pressures to 15-300 PSI.
Higher Pressures Upon Request

HOT WATER

Section I and Section IV

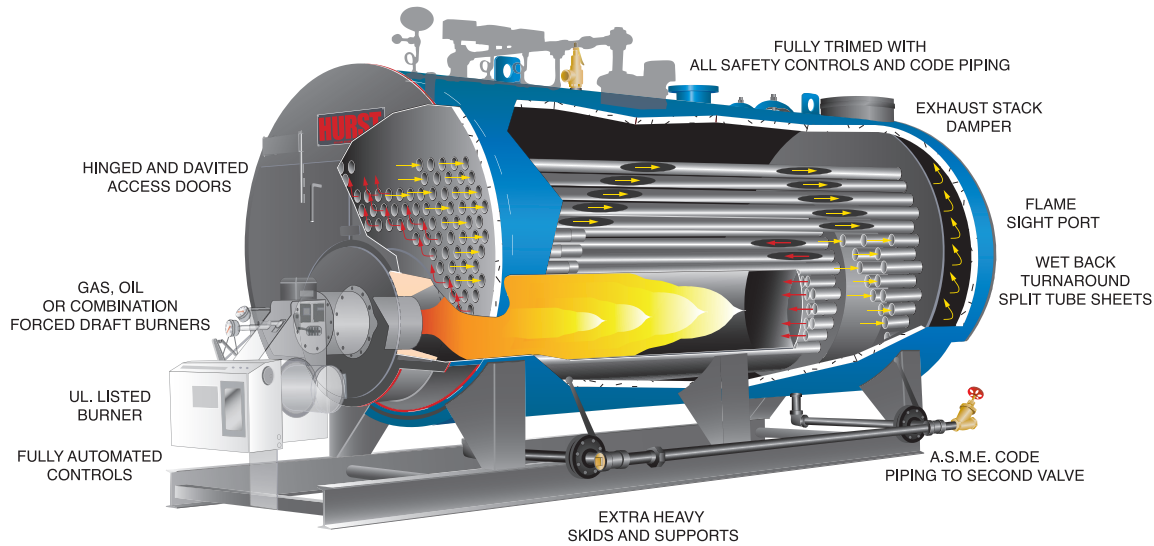


SKID MOUNTED
MODULAR PACKAGED

"Wetback design eliminates, costly deteriorating refractory rear doors and baffles between flue gas passes."

HURST PERFORMANCE SERIES BOILERS

SERIES 400



SEMI WET BACK

BOILER SPECIFICATIONS

BOILER HORSEPOWER			30	40	50	60	70	80	100	125	150	200	250
HEATING SURFACE	FIRESIDE	SQ. FT.	150	200	250	300	350	400	500	625	750	1000	1250
STEAM OUTPUT	FROM & @ 212°	LBS/HR	1035	1380	1725	2070	2415	2760	3450	4313	5175	6900	8625
GROSS OUTPUT	BTU X 1,000/HR	MBH	1004	1339	1674	2009	2343	2678	3348	4184	5021	6695	8369
FIRING RATE GAS	1,000 BTU/CF	CFH	1260	1680	2100	2520	2940	3360	4200	5250	6300	8400	10500
FIRING RATE LP GAS	91,500 BTU/GAL	GPH	13.79	18.39	23	27.50	32	36.69	46	57	69	92	115
FIRING RATE OIL #2	140,000 BTU/GAL	GPH	9	12	15	18	21	24	29.89	37.39	45	60	75
FIRING RATE OIL #5 & #6	150,000 BTU/GAL	GPH	8.39	11.18	14	16.79	19.59	22.39	28	35	42	56	70
A	*NOTE: 1 STEAM OUTLET SIZE	150 PSI	IN	1.50	2	2.50	2.50	3	3	4	4	4	6
A	*NOTE: 2 STEAM OUTLET SIZE	15 PSI	IN	4	4	4	6	6	6	8	8	8	10
B	*NOTE: 2 WATER SUPPLY SIZE	30 PSI	IN	4	4	4	6	6	6	8	8	8	10
C	*NOTE: 2 WATER RETURN SIZE	30 PSI	IN	4	4	4	4	4	4	6	6	6	8
D	FEEDWATER CONNECTION SIZE		IN	0.75	0.75	0.75	1	1	1.25	1.25	1.25	1.25	1.50
E	BLOWDOWN CONNECTION (BTM)	HIGH PRESS.	IN	1	1.25	1.25	1.25	1.25	1.25	1.25	1.25	1.25	1.25
E	BLOWDOWN CONNECTION (BTM)	LOW PRESS. & HW	IN	1.25	1.25	1.25	1.50	1.50	1.50	1.50	1.50	2	2
F	STACK OUTLET SIZE O.D.		IN	10	10	10	12	12	12	14	14	16	18
G	FURNACE O.D.		IN	14	14	16	18	18	18	22	26	26	30
H	SHELL I.D.		IN	40	40	44	48	48	48	54	60	60	66
I	SUPPLY HEIGHT		IN	55.25	55.38	59.75	63.75	66.63	66.63	74.63	81.75	81.75	90.75
J	WIDTH WITHOUT TRIM		IN	46	46	50	54.63	54.63	54.63	60	66.50	66.50	78.50
K	WIDTH WITH TRIM		IN	58	58	60	66	66	66	72	79	79	84
L	SKID WIDTH		IN	34	34	36	40	40	40	44	48	48	51
M	END OF SKID FROM FRT. PLATE		IN	13.50	14.25	15.25	15.25	15.25	15.25	21.75	25.13	25.13	28.63
N	SHELL TO FLOOR		IN	12	12	12	12	12	12	14	15	15	15
O	SKID LENGTH		IN	81	99	102	102	102	114	114	132	156	180
P	STACK OUTLET HEIGHT		IN	58.63	58.63	62.63	66.63	66.63	66.63	74.63	81.75	81.75	90.75
Q	BLOWDOWN LOCATION		IN	35.75	41	31.75	29.75	29.75	29.75	29.75	32.88	32.88	31.88
R	STEAM OUTLET LOCATION	15 PSI & UP	IN	38.38	41.75	40.25	49.75	49.75	58.75	55.75	55.88	73.88	78.88
S	SUPPLY LOCATION		IN	20.25	20.25	33.25	37.75	37.75	43.75	32.75	32	44.38	49.88
T	RETURN LOCATION		IN	59.25	74.25	78.25	85.75	85.75	97.75	90.75	102	114	128.38
U	BURNER PROJECTION	STND. BURNER	IN	32	36	36	36	36	40.50	40.50	45	45	45
V	TUBE REMOVAL	FRONT	IN	68	85	88	91	91	102	96	108	132	150
W	STACK OUTLET LOCATION		IN	78.50	95.75	98.75	104.75	104.75	116.75	111.75	123.88	148.88	166.81
X	APPROX. OVERALL LENGTH	STND. BURNER	IN	118	139	142	149	149	167	163	179	205	223
Y	CENTER LINE OF FURNACE	TO FLOOR	IN	27.31	27.31	28.81	31.31	31.31	31.31	29.81	33.75	33.75	38.38
Z	2ND BLOWDOWN LOCATION		IN	N/A	N/A	N/A	N/A	N/A	N/A	50	56	80	98
	WATER CAPACITY - STEAM	@NWL	GALS	215	272	324	389	371	429	482	681	848	1126
	WATER CAPACITY - WATER	FLOODED	GALS	252	320	382	445	427	492	564	793	985	1350
	APPROX. SHIPPING WEIGHT.	150 PSI	LBS	3500	4100	4700	6450	6700	7150	8200	10400	11800	16600
	APPROX. SHIPPING WEIGHT.	15 & 30 PSI	LBS	3400	4000	4500	6200	6400	6850	7200	9400	10800	13700
	BOILER HORSEPOWER			30	40	50	60	70	80	100	125	150	200

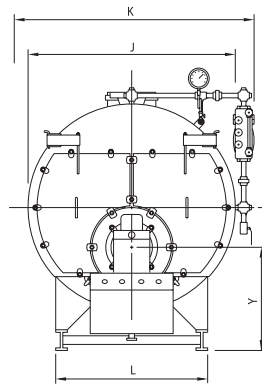
NOTE:1 3" & ABOVE ARE 300# ANSI FLANGE.
 NOTE:2 4" & ABOVE ARE 150# ANSI FLANGE.
 NOTE: 100 BHP & LARGER HAS 12" X 16" MANWAY

ALL DIMENSIONS ARE IN INCHES
 CERTIFIED DRAWING AVAILABLE UPON REQUEST.
 DIMENSIONS SUBJECT TO CHANGE WITHOUT NOTICE.

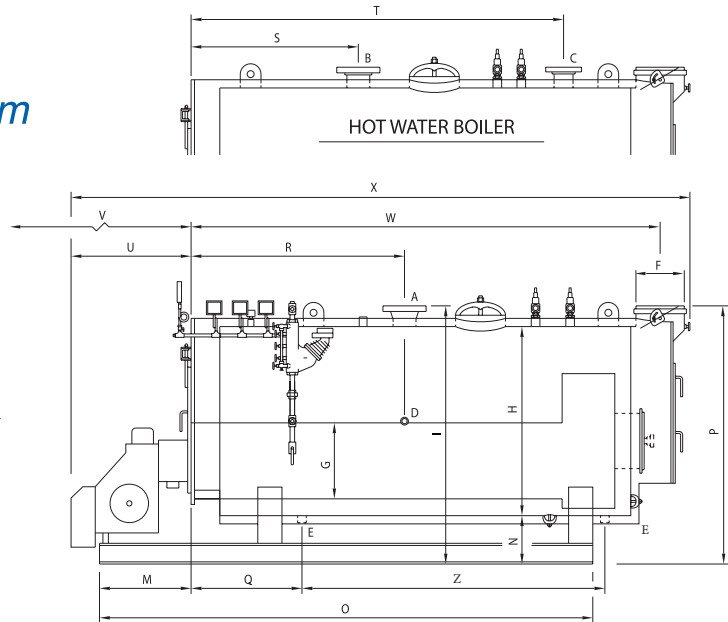
Inspected and registered with the National Board of Boiler & Pressure Vessel Inspectors.



Designed, constructed and stamped in accordance with the requirements of the ASME Boiler Codes.



FRONT VIEW



STEAM BOILER

	300	350	400	500	600	700	750	800	900	1000	1200	1500
	1500	1750	2000	2500	3000	3500	3750	4000	4500	5000	6000	7500
	10350	12075	13800	17250	20700	24150	25875	27600	31050	34500	41400	51750
	10043	11716	13390	16738	20085	23432	25106	26780	30128	33475	40170	50213
	12600	14700	16800	21000	25200	29400	31500	33600	37800	42000	50400	63000
	138	160	184	230	275	320	344	368	413	460	550	688
	90	105	120	150	180	210	225	240	270	300	360	450
	84	98	112	140	168	196	210	224	252	280	336	420
A	6	6	6	6	8	8	8	8	8	8	10	10
A	10	10	10	10	12	12	12	12	14	14	14	14
B	10	10	10	10	12	12	12	12	12	12	14	14
C	8	8	8	8	8	10	10	10	12	12	14	14
D	2	2	2	2	2.50	2.50	2.50	2.50	2.50	2.50	2.50	2.50
E	1.50	1.50	1.50	1.50	1.50	2	2	2	2	2	2	2
E	2	2	2	2	2	2	2	2	2	2	2	2
F	20	20	24	24	28	28	28	30	30	30	32	32
G	34	34	38	38	44	52	52	52	52	52	56	56
H	84	84	90	96	102	112	112	112	112	112	126	136
I	108.75	108.75	115	121	127	137.25	137.25	137.25	137.25	137.25	152.25	162.50
J	90.75	90.75	96.25	102.7	108.75	119	119	119	119	119	133.50	144
K	103	103	109	115	121	136	136	136	136	136	153	165
L	64	64	70	76	78	92	92	92	92	92	108	114
M	30.63	35.63	32.63	32.63	52.63	35.13	34.63	36.63	49.63	49.63	55.63	59.50
N	18	18	18	18	18	18	18	18	18	18	18	18
O	180	204	198	212	240	207	218	228	264	288	294	320
P	108.75	108.75	115	122	128	138.25	138.25	138.25	138.25	138.25	152.25	162.50
Q	33.88	39.88	45.88	47.88	46.88	51.38	49.88	49.88	50.38	49.88	53.88	52.88
R	69.38	82.88	91.38	96.88	96.38	90.38	90.38	101.38	122	115.88	122.38	135.88
S	50.38	53.88	55.88	58.88	60	51.38	51.38	51.38	78	78	74.88	65.88
T	140.38	148.88	139.88	160.88	160	140.38	140.38	153.38	180	200	205.88	245.88
U	46	48	54	57	62	62	62	62	68	68	84	84
V	150	168	168	184	191	173	184	195	217	239	239	264
W	170.88	188.88	190.88	208.88	217.63	202.38	213.88	225.88	247.88	269.88	270.88	298.88
X	230	250	260	281	297	282	293	311	311	355	373	401
Y	41	41	43.50	44.25	47.50	50.25	50.25	50.25	50.25	50.25	52.63	53
Z	98	110	98	137	146	124	138	148	170	193	189	214
	1773	2009	2230	2918	3193	3121	3347	3562	3996	4425	5459	6927
	2176	2461	2790	3627	4058	4043	4330	4605	5157	5706	7568	10205
	27100	30200	32200	37900	46400	48100	54100	57200	61300	66400	82000	103000
	25800	28200	29500	34400	37400	40100	42500	44900	49700	54600	74000	93000
	300	350	400	500	600	700	750	800	900	1000	1200	1500

BOILER DESIGN: Three-Pass "Scotch Marine" Firetube design with stress relieving "Wetback" construction. Pressure designs for steam are:

- 30-150 HP. up to 450 PSI max.
- 200-300 HP. up to 400 PSI max.
- 400-500 HP. up to 350 PSI max.
- 500-600 HP. up to 325 PSI max.
- 700-1000 HP. up to 300 PSI max.
- 1200-1500 HP. up to 250 PSI max.

Section IV Hot Water pressures models are from 30-160 psig max; 250F max. Higher pressure, higher temperature Section I hot water boilers available upon request. Factory assembled with trim, tested, ASME code, UL, and CSD-1 standards.

STEAM MODEL TRIM: Safety relief valve(s), operating pressure control, high limit pressure control with manual reset, steam pressure gauge with syphon, combination pump control and low water cut-off with gauge glass assembly and drain valve, auxiliary low water cut-off with manual reset.

HOT WATER MODEL TRIM: Safety relief valve(s), operating temperature control, high limit temperature control with manual reset, combination pressure & temperature gauge, low water cut-off control with manual reset.

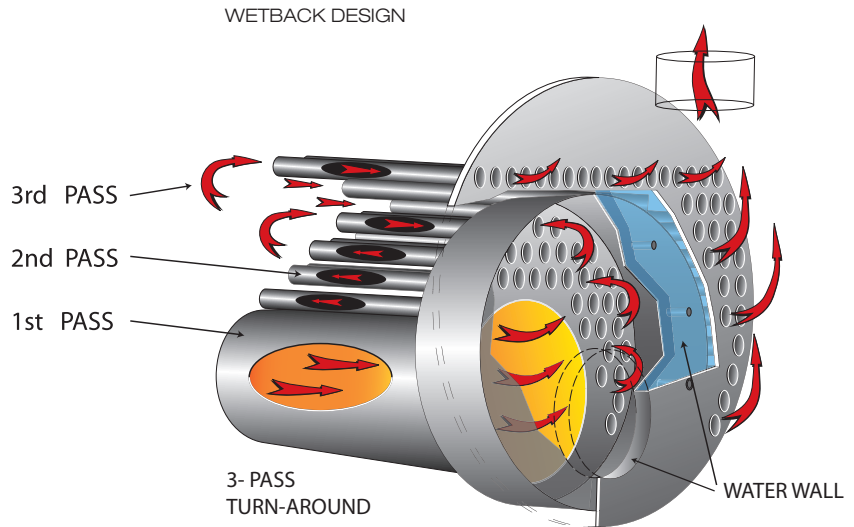
BURNER: UL listed burner/boiler packages are factory pre-piped, wired and tested. Available fuel configurations: natural gas, propane, No. 2 oil, or combination.

HURST PERFORMANCE SERIES BOILERS

WETBACK ADVANTAGE

Dryback boilers are subject to deteriorating rear refractory, leaking baffles, leaking door seals, and often found with a heat-stressed rear tube sheet. Fragile refractory baffling and door seals will require continuous monitoring, maintenance, and replacement, costing thousands of dollars in materials and specialized labor costs over the life of the boiler. In addition, broken baffles and leaking seals will short-circuit the boiler's gas flow, causing high stack temperatures and lowering efficiency until repairs can be made. This can bring your production process to a costly halt.

All of those frustrating problems have been designed out of the Hurst Series 400 Wetback. It has a full wet back radiant heat transfer area that promotes superior internal water circulation and rapid heat absorption. Separate rear tube sheets allow each pass of tubes to expand and contract at its own rate without tube-to-sheet stress. Tubes are mechanically rolled, flared and beaded, making any tube service a simple matter. A removable manway plug allows access to the furnace for inspection.



Stress Relieving “Wetback” Construction for Extended Life

STANDARD STEAM TRIM

- Operating & high limit pressure control
- Modulating pressure control (when appl.)
- Water column with gauge glass, drain valve, combination low water cut-off & pump control
- Probe Aux, low water cut-off w/ manual reset, steam pressure gauge, syphon & test cock
- Stack thermometer
- Safety relief valve(s) per ASME Code

STANDARD WATER TRIM

- Operating & high limit temperature control
- Modulating temperature control (when appl.)
- Probe type low water cut-off control w/ manual reset
- Combination pressure & temperature gauge
- Hot water return baffle for shock resistance
- Stack thermometer
- Safety relief valve(s) per ASME Code

HBC-09507
09/2022



hurstboiler.com

HURST BOILER & Welding Co., Inc.

100 Boilermaker Lane • Coolidge, GA 31738-0530
Tel: (229) 346-3545 • Fax: (229) 346-3874
email: info@hurstboiler.com