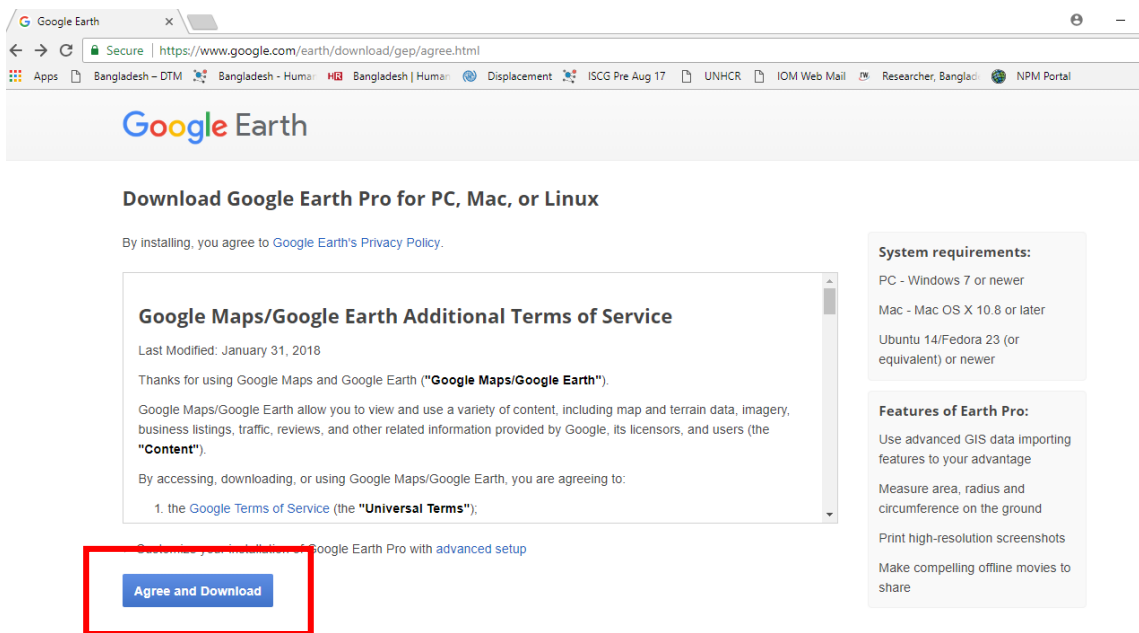




Google Earth user manual

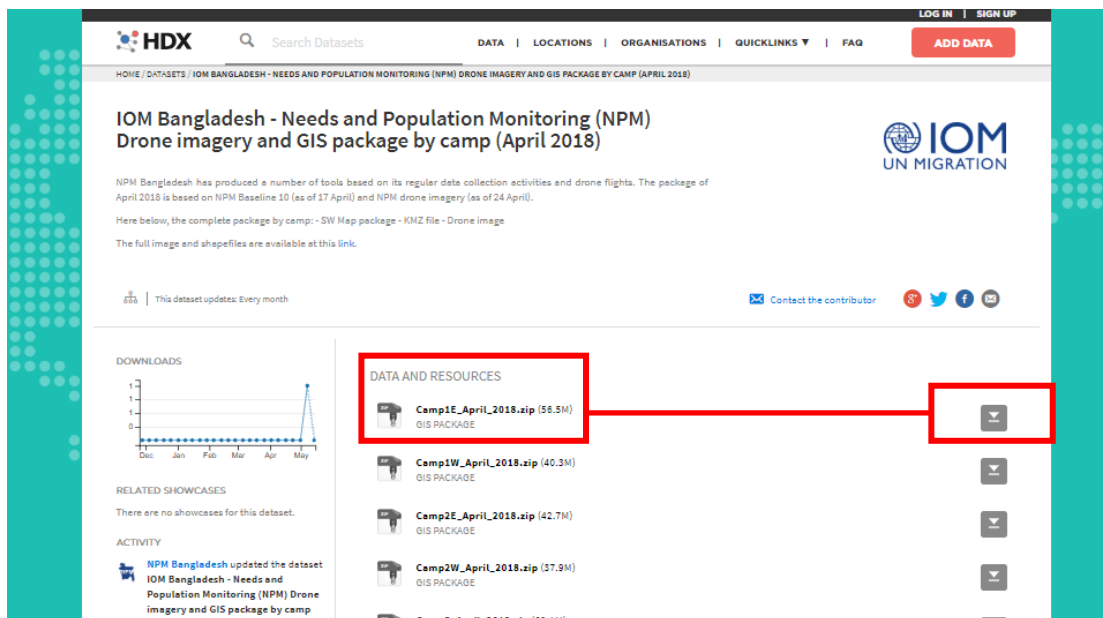
Google Earth

Download and install Google Earth



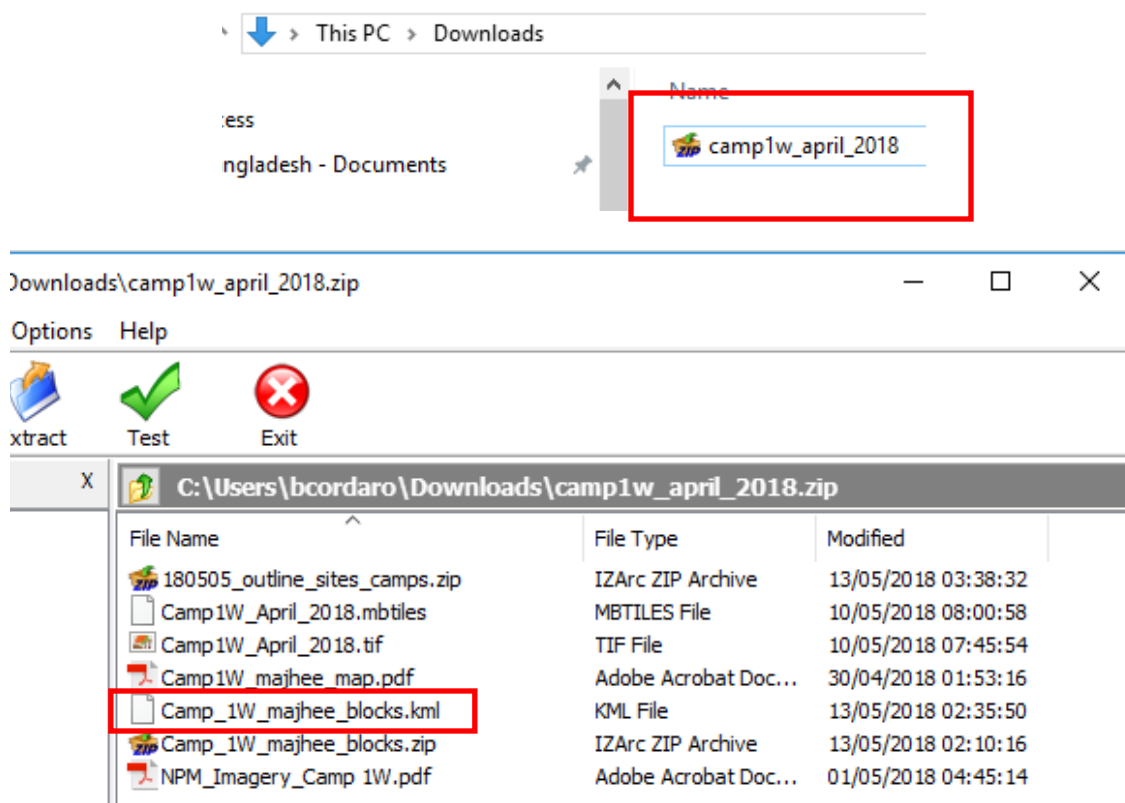
How to download data from HDX

Please, follow the link <https://data.humdata.org/dataset/iom-npm-cox-bazar-uav-imagery> . Tailored packages by camp are available as well at the link <https://data.humdata.org/dataset/data-and-resources-by-camps> and will be updated after every NPM assessment.

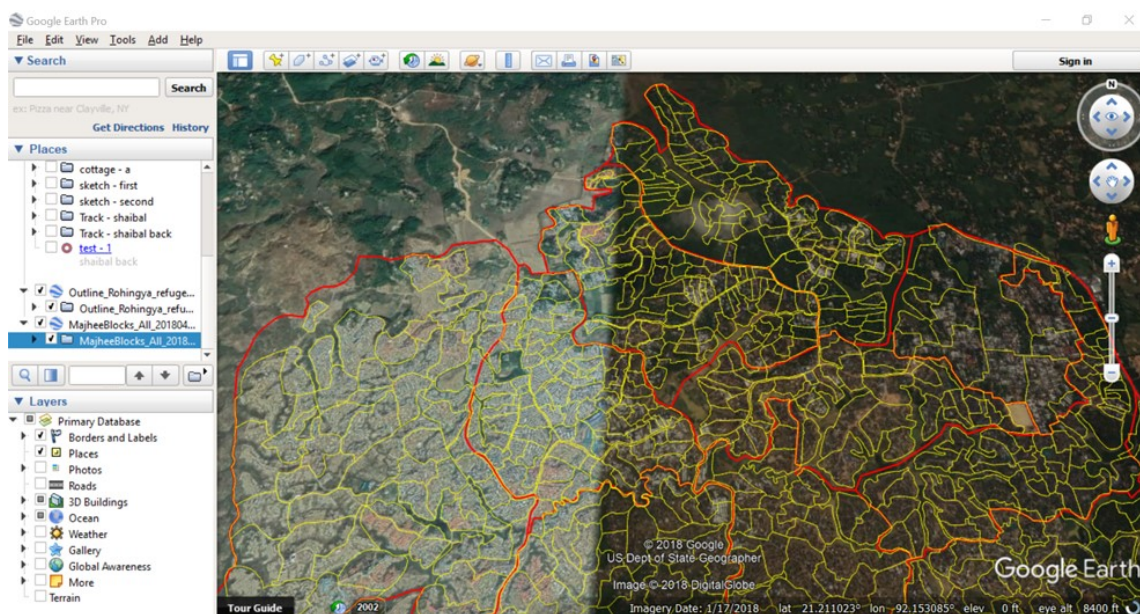


How to open KML/KMZ?

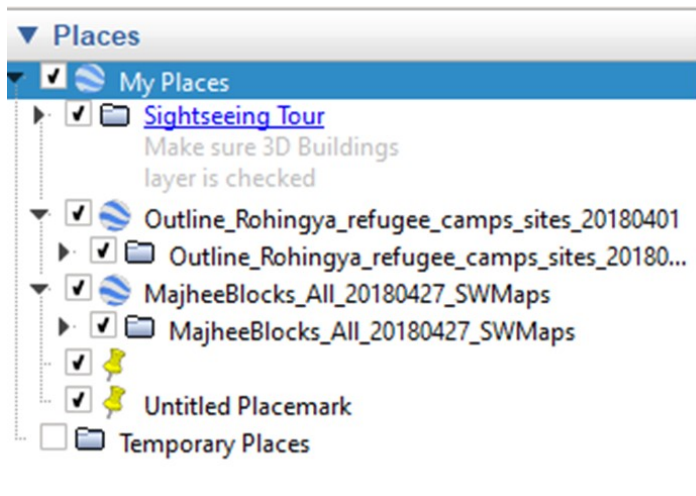
After downloading the file, click on it.



Double click on the saved KMZ/KML file to open the map in Google Earth. Open Google Earth, go to File at the top menu, select Open and navigate to where you saved the KMZ files on your computer.



Creating a new folder



If you want to add your own location records, you can either add them to the relevant built in Google Earth map folder or you create your own folder.

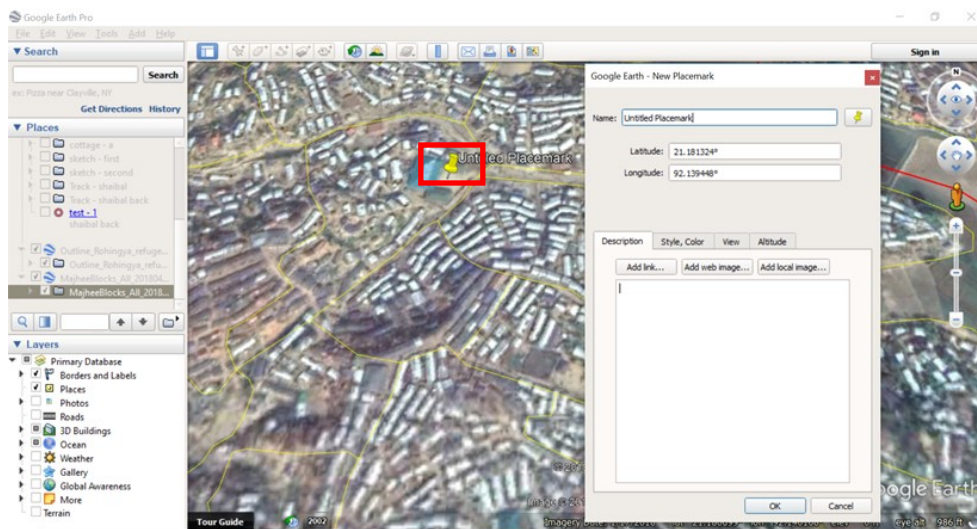
To create a new folder – inside the Places window, at the left side of the screen, right click on My Places select Add and Folder. Set the name of the folder (e.g. 'Incident point records').

To save the new folder – go to the File tab at the top left menu and select Save and Save My Places.

To delete a folder – right click on the folder name in the Places window and select Delete.

Adding new location records

To take a point click icon from the top menu. Move the icon that appears on the screen to the correct location by clicking on it with the mouse and dragging. Then place the icon in the desire location of the map. You can fill in the name of the record and description (e.g. species recorded, date of recording) in the pop-up box.



Prefer to use decimal degree format for collecting point. So before taking a point change the setting in decimal degrees from tool to Show Lat/Long in Decimal Degree.

