

The background of the entire image is a vintage-style map of the Americas, rendered in a warm, golden-brown color palette. The map shows the outlines of North and South America with some internal borders. In the top left corner, there is a detailed illustration of a vintage brass compass with a wooden handle and a glass cover. The compass face shows cardinal and intercardinal directions.

The Leader's Compass

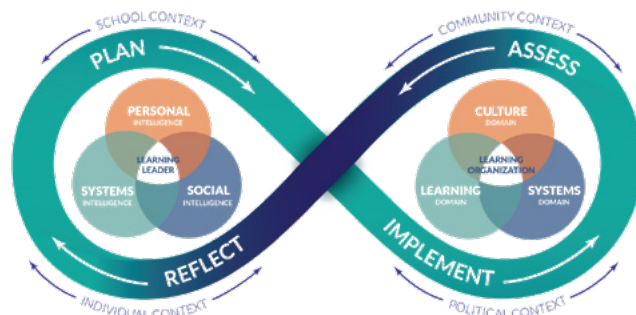
Find the True North in YOUR Leadership



Find YOUR True North

Designed through a nationwide collaborative, this immersive eight-part series will help New Jersey school leaders like you...

- Identify your core values and personal mission.
- Strengthen your leadership capacity.
- Learn and share best practices with a cohort of your colleagues.
- Anticipate roadblocks and develop problem-solving skills.
- Inspire your staff with renewed energy and passion.



What You'll Experience:

- 8 powerful sessions delivered across 5 dynamic days
- A mix of in-person and virtual learning
- Access to the best practices developed by an 11-state educational leadership collaborative with fresh ideas and new perspectives
- Meaningful connections with peers who are in the field with you and understand your journey
- Tools and strategies to reignite your purpose and lead through self-reflective practice



Join the First Cohort!

The journey for the inaugural cohort begins this November at a discounted rate of just \$499 for the entire experience.

Limited seats available — reserve your spot today.



Register at www.tinyurl.com/LdrsCompass



Schedule:

Session 1 (AM): Context and the Domains of the Learning Organization	Nov. 18 (FEA Conference Center)
Session 2 (PM): The Learning Leader in the Learning Organization	9 am - 3 pm, Breakfast & Lunch
Session 3: The School Leader Paradigm Inquiry Process	Jan. 26 (Zoom) 9 am - Noon
Session 4 (AM): Maximizing the Power of Relationships	Mar. 27 (FEA Conference Center)
Session 5 (PM): Creating Hope Through Student-Centered Systems	9 am - 3 pm, Breakfast & Lunch
Session 6: Fostering a Culture of Reflection and Growth	Apr. 16 (Zoom) 9 am - Noon
Session 7 (AM): Assessing the Evidence of Your Leadership Impact	May 19 (FEA Conference Center)
Session 8 (PM): Final Evaluation to Future	9 am - 3 pm, Breakfast & Lunch



For information, contact Heather Moran at hmoran@njpsa.org.

