

METAL FETISHIST FIRMWARE V2

Pre-release documentation

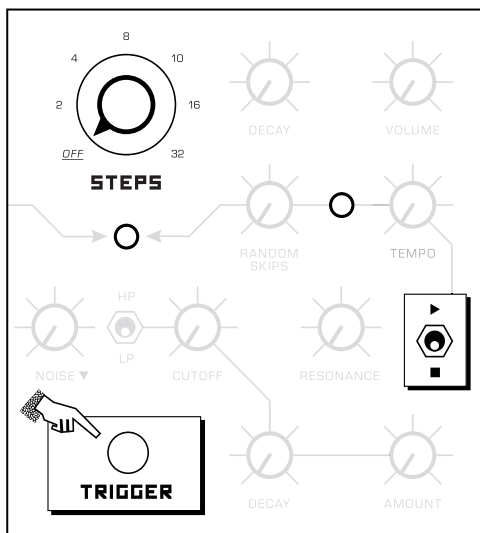
This document accompanies the pre-release firmware version 2.0 for the Metal Fetishist and outlines a set of new features available for public testing ahead of official release. Key additions include MIDI playability and a new Settings Menu that lets users choose optional Effects and Step Modulation destinations.

If you'd like to provide feedback or have questions please send an email to xavi@bodysynths.com

MIDI

The Metal Fetishist now listens to incoming MIDI Note and CC commands. When the sequencer is in STOP mode, send a NoteOn from an external MIDI controller, the instrument will trigger on the MIDI note and will ignore the PITCH Knob on the panel for as long as the Volume Envelope is running. MIDI CC 1 controls the Noise/Ext level. MIDI CC 74 controls Cut-Off.

MENU NAVIGATION



How to enter the menu, navigate and select options:

1. With the Sequencer stopped, Press and Hold the TRIGGER button.
2. While holding the TRIGGER button, flip the PLAY/STOP switch up and then down. Do this as many times as the number of the menu you want to enter, then release the TRIGGER button.
3. The Right LED will do a sequence of blinks confirming which menu has been selected.
4. The STEPS Knob allows the user to navigate the menu's options. Inside each menu, the Left LED shows which options are enabled.
5. Use the trigger button as a way to select options within a menu. The Right LED shows if changes have been saved.
6. To exit the Settings Menu, switch the sequencer to PLAY.

FACTORY RESET

In order to reset the instrument to its factory settings, enter any of the menus and push the trigger button for about 5 seconds. The LEDs will blink as a confirmation.

MENU 1: Effects

On the first menu you can choose the effect managed at the RUST/CORROSION section. The default Distortion can be replaced by alternative modes. A new **Dry/Wet mixer control** is available when you turn the RUST/CORROSION Knob while holding down the TRIGGER button. It defaults to fully Wet.

POSITION	SELECTION	DESCRIPTION
↙ OFF	Distortion	Default option. Distortion with incremental downsampling when on RUST mode.
← 2	2nd Osc	Extra oscillator mixed at 50%. CORROSION sets the range from -1 oct to unison. RUST sets the range from unison to +1 oct.
↶ 4	Phaser	Phaser with two presets: CORROSION is subtle. RUST is intense. The Knob controls the LFO speed.
↑ 8	Flanger	Flanger with two presets: CORROSION is subtle. RUST is intense. The Knob controls the LFO speed.
↗ 10	Chorus	Chorus with two presets: CORROSION is subtle. RUST is intense. The Knob controls the LFO speed.
→ 16	—	Option unused
↘ 32	—	Option unused

MENU 2: Mod Assign

The second menu transforms the CUTOFF Random Step Mod (3-way switch pointing down), together with the CUTOFF CV Input, into an “assignable” modulation destination. This allows for the default Cut-Off modulation to be replaced by other instrument controls.

POSITION	SELECTION	DESCRIPTION
↙ OFF	CutOff	Default option. Step-modulation for Filter CutOff.
← 2	Volume Decay Time	When selected, VOLUME DECAY Knob sets the minimum decay time while modulation sets the maximum.
↶ 4	Pitch Decay Amount	When selected, PITCH DECAY AMOUNT Knob sets the minimum amount while modulation sets the maximum.
↑ 8	CutOff Decay Amount	When selected, CUTOFF DECAY AMOUNT Knob sets the minimum amount while modulation sets the maximum.
↗ 10	Volume	When selected, VOLUME Knob sets the maximum volume while modulation sets the minimum.
→ 16	Effect Param	When selected, RUST/CORROSION Knob sets the lowest effect setting while modulation sets the highest.
↘ 32	—	Option unused

MENU 3: MIDI Channel

On the third menu you can choose the channel for the MIDI Input. By default, the instrument listens on all channels.

POSITION	SELECTION	DESCRIPTION
↙ OFF	All (OMNI)	Default option, listen on all channels
← 2	1	MIDI Channel 1
↖ 4	2	MIDI Channel 2
↑ 8	3	MIDI Channel 3
↗ 10	4	MIDI Channel 4
→ 16	5	MIDI Channel 5
↘ 32	6	MIDI Channel 6

MENU 4: Options

On the fourth menu you can enable or disable a set of alternative global options. This is the only menu where multiple options can be selected simultaneously.

POSITION	SELECTION	DESCRIPTION
↙ OFF	Load defaults	Action: Load option defaults.
← 2	Alternative Steps Len	Replaces STEPS selection with: OFF, 3, 5, 7, 12, 18, 24. Disabled by default.
↖ 4	Re-start Sequence on Play	Always re-start the Sequence when switching to PLAY mode. Disabled by default.
↑ 8	Disable Auto-Start	Do not auto-start the internal sequencer if the external clock is disengaged. Disabled by default.
↗ 10	—	Option unused
→ 16	—	Option unused
↘ 32	—	Option unused