

2025 ANNUAL REPORT



CONTENTS

- ② From the President and Council Chair
- ③ Defending and Uplifting Our Field
- ④ Professional Development
- ⑥ Annual Conference and Awards
- ⑨ Membership and Committees
- ⑬ Making History Matter and Annual Fund
- ⑱ Statement of Financial Position





From the President and CEO

While preparing for the arrival of the nation's 250th anniversary, we faced several challenges in 2025 from the White House that sought to diminish our field. AASLH rapidly expanded its efforts to resist federal funding and staffing cuts, grant cancellations, and attempts to narrow historical practice and whitewash history. We continued to call for a 250th that would be honest and inclusive, experienced by most Americans at the grassroots level. At the same time, AASLH conducted a history workforce survey, expanded its professional trainings, saw its membership grow, and held a record-setting conference in Cincinnati. It was a whirl of a year in which our members came through every time we asked them to.

John R. Dichtl
President & CEO, AASLH



From the Council Chair

In study after study, the public relies on history organizations to share our past with scholarship and innovation which engenders deep trust. For over 100 years, AASLH has advocated for the field ensuring creative and academic independence our communities rely upon. In these challenging times, we remain committed to these ideals. Thank you for being on the journey.

Christy S. Coleman
Executive Director
Jamestown-Yorktown Foundation

National Survey of History Practitioners

A groundbreaking survey conducted by AASLH in 2025 collected data on who works in the history field, how they are compensated, and how they feel about their work.

We were hoping for 1,000 responses. We received almost 4,000.



The findings reveal significant challenges related to equity, sustainability, and career advancement, but also highlight opportunities to strengthen the profession and better support those who dedicate their lives to history.

It's time for our field to have discussions about these issues that lead to change. Join AASLH programs and conversations throughout 2026 and beyond to build a stronger and more sustainable field.

Defending and Uplifting Our Field

Through speciously worded presidential and agency orders, incendiary rhetoric, mass layoffs and funding cuts at federal cultural agencies, and more, in 2025 the new presidential administration launched a steady campaign to break down our nation’s historical infrastructure and remake it in service of an exclusive, inaccurate vision of America’s past and present. The White House particularly targeted some of the field’s leading models, including the Smithsonian Institution and National Park Service, as well as crucial federal agencies such as the National Endowment for the Humanities and Institute of Museum and Library Services (IMLS). Together, these attacks on historical expertise, best practices, and resources have put an immense strain on the history community.

AASLH responded to defend our members, the field, and the public they serve.

On September 3, AASLH and a coalition of partners [jointly filed an amicus brief](#) at the federal appellate level in *Rhode Island v. Trump*, a lawsuit brought to stop White House efforts to dismantle IMLS. In November, the federal district judge in the case issued a permanent injunction blocking the administration from further harm to IMLS and ordering the restoration of grants. The administration is appealing that decision.

In August, AASLH and the Organization of American Historians, Association for the Study of African American Life and History, Association of African American Museums, and National Council on Public History [issued a statement](#) to defend a full understanding of the past and its relevance to today at National Park Service sites.

Throughout the year, AASLH collected stories of how state and federal actions are impacting the field. We considered additional legal options. AASLH also spoke up for history in the news media and relied on our extensive [Reframing History research](#) and related studies to show how most Americans support complete and accurate tellings of history.

What Can You Do?

Become a member or renew your membership with AASLH

Membership revenue directly supports our advocacy.

Sign Up for Advocacy Alerts

AASLH will contact you when you can advocate for federal support of the field.

Use AASLH Training

The Reframing History report and toolkit can help you effectively communicate about the value of history. AASLH regularly offers **online training** to improve your communication and advocacy skills.

Make a donation to AASLH’s Annual Fund

We’ll use the funds to develop research and training that powers our advocacy.

Professional Development and Trainings

From volunteers to paid staff, AASLH provides comprehensive training in all areas of running a history organization. See and register for our training programs at learn.aaslh.org.

Online Learning

Our **Instructor-Led Online Courses** consistently sell out. **565** people took these courses in 2025, including *Basics of Archives*, which returned due to popular demand.

Webinars are the most attended form of training AASLH offers, with almost **4,000** attendees in 2025. Our webinars about the Native American Graves Protection and Repatriation Act and historic cemeteries were so well attended that we are offering additional programs in these areas. The most popular webinar of 2025, Digital Archiving Grants with Permanent.org, had 357 registrants.



Interpreting Historic House Museums Today

Sponsored by the Richard Hampton Jenrette Foundation

In April, leaders in the field of historic house museums gathered to discuss how these museums communicate the stories and meanings of their collections, buildings, and landscapes as well as what the future holds for engaging audiences with these historic places. The summit was held at the Ford House in Grosse Pointe Shores, Michigan.



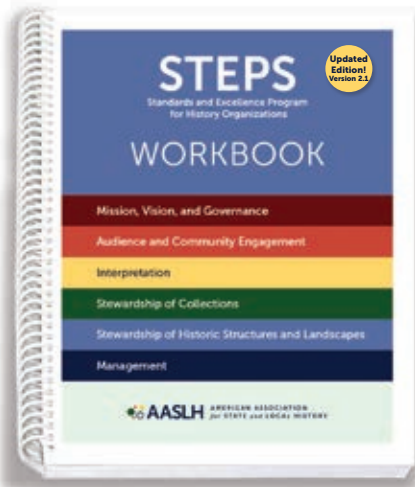
Small Museums, Important Collections

Sponsored by PastPerfect Museum Software

Small museums face a unique set of collections challenges, often related to limited resources, staff capacity, and infrastructure. This summit provided crucial guidance and identified challenges and opportunities for small museum collections care in the future.



Andrea Jones gave the opening keynote at the Interpreting Historic House Museums Today summit.



Standards and Excellence Program (STEPS) for History Organizations

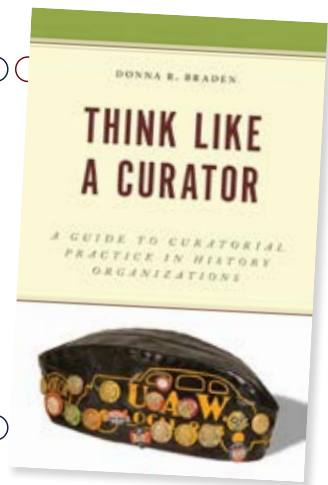
Congratulations to the history organizations that invested in improving their operations to meet national museum standards with AASLH's STEPS. Congratulations to the **77** organizations that earned certificates in 2025.

**Can STEPS Help Your Organization?
Learn more and enroll at aash.org.**



Book Series

The new addition to the AASLH Book Series in 2025 was *Think Like a Curator: A Guide to Curatorial Practice in History Organizations* by Donna Braden. AASLH members receive 20% off books year-round.



History Leadership Institute



The Minnesota Historical Society hosted our 2025 History Leadership Institute Seminar, which took place in Minneapolis in June. Twenty-five fellows representing seventeen states and Canada enjoyed two weeks of discussion, presentations, and tours.

2005 Annual Conference



Sept. 10–13 in the “Queen City”

At 1,063 registrants, this was AASLH’s fourth largest annual conference, behind only Baltimore (1,400 people in 1999), Philadelphia (1,288 people in 2019), and New Orleans (1,100 people in 2000). The weather was pristine, the city and local host sites were inviting, and the buzz was positive.



The Exhibit Hall was full of vendors with products and services to help museums and historic sites.

Don't miss
the 2026
joint conference
with the
National Council
on Public History!

Registration opens in May.

The logo for the 2026 Joint Conference features a stylized blue hand holding a quill pen. To the right of the hand, the text "2026 JOINT CONFERENCE" is stacked in red, with "September 16-19" and "Providence, RI" in smaller blue text below it. Below this, the phrase "The Work of REVOLUTION" is written in large, bold letters, with "The Work of" in red and "REVOLUTION" in blue. At the bottom, "American Association for State and Local History" and "National Council on Public History" are listed in blue.

2026
JOINT
CONFERENCE
September 16-19
Providence, RI

**The Work of
REVOLUTION**

American Association for State and Local History
National Council on Public History

2005 Annual Conference



Above & Right: The Cincinnati Museum Center, located in Union Terminal, impressed attendees with its distinctive architecture and its museums.

Top Right: Don Wildman, host of *Mysteries at the Museum* and other programs, spoke about how museums and historic sites can collaborate with media, educators, and other civic institutions to recenter history in American life.



Above: Some conference sessions offered participants opportunities for hands-on learning.

Right: An evening event at the National Underground Railroad Freedom Center.

Bottom Right: A highlight of each conference is the Leadership in History Awards Presentation.





2025 Leadership In History Awards

AWARD OF DISTINCTION



Larry Yerdon received the Award of Distinction for transforming Hancock Shaker Village and Strawberry Banke Museum into models of innovation, sustainability, and community engagement.

ALBERT B. COREY AWARD

The Albert B. Corey Award recognizes primarily volunteer-operated historical organizations and projects that best display the qualities of vigor, scholarship, and imagination in their work. It is AASLH's most prestigious award for all-volunteer institutions and initiatives.



United Lynn Pride of Lynn, Massachusetts, was recognized for the project

Through a Rainbow Lens: A Reflection on Lynn's LGBTQ+ History. This project documented, shared, and preserved the city's LGBTQ+ stories and places.

HISTORY IN PROGRESS (HIP) AWARDS

The History in Progress Award is a special recognition for winners that are particularly inspiring and creative and is only given to 5 percent or fewer of the total awardees per year.

Louisville Story Program (Louisville, Kentucky), for ***I'm Glad About It: The Legacy of Gospel Music in Louisville, 1958-1981.*** This rich and multifaceted



project preserved the legacy of Black gospel music in Louisville through deep community engagement and cultural reclamation of recordings and photos.



Detroit Historical Society (Detroit, Michigan) for ***The Hustle: Celebrating Detroit's Unsung Entrepreneurs.*** The Detroit Historical Society launched *The Hustle* in 2022 to celebrate Detroit's unsung Black entrepreneurs.

Membership

Members are the national history community that support each other and AASLH. Your membership dues are the largest single source of revenue for AASLH, powering everything the association does for the field. Thank you for keeping our field and community strong by investing in AASLH!

Membership Committee Returns

AASLH wants to expand our community and serve all of the nation's 21,000 history organizations. As part of our efforts to increase membership, we've revived the Membership Committee. Two subcommittees are working to increase Institutional Membership and help AASLH connect with history practitioners under the age of 40. Thank you to Laurie Egan-Hedley and Jina Lee for serving as chairs of these subcommittees, and all the committee members for their work to grow membership.

Committees

Thank you to all the members who serve on committees, which help AASLH conduct its business or support the field by developing training and resources.

2025 Annual Conference Host

Rebekah Beaulieu and Whitney Owens, Co-Chairs

2025 Annual Conference Program

Aaron Noble, Chair

Audit

Mindi Love Pendergraft, Chair

Awards

Jason Crabill, Chair

Climate and Sustainability

Kathy Garrett-Cox, Chair

Diversity and Inclusion

Veronica Gallardo, Chair

Editorial Advisory

Rebekah Beaulieu, Chair

Educators and Interpreters

Bethany Hrachovec, Chair

Field Services Alliance

Erik London, Chair

Finance

Christie Weinger, Treasurer

Gender Discrimination / Sexual Harassment Task Force

Governance

Kim Fortney and Jim Pepper Henry, Co-Chairs

Historic House

Rena Lawrence and Lisa E. Worley, Co-Chairs

History Leadership Institute Advisory

Investment

Jeff Matsuoka, Chair

2026 Joint Conference Host

Morgan Grefe and Karin Wulf, Co-Chairs

2026 Joint Conference Program

Jennifer Saunders and Kacie Lucchini Butcher, Co-Chairs

Leadership Nominating Committee

Erin Carlson Mast and Norman Burns, Co-Chairs

Making History Matter Campaign

Erin Carlson Mast, Chair

Military History

Myers Brown, Chair

National Historical Publications and Records Commission Representative

Darin Waters

National History Day Advisory Board Representative

Allison Wickens

Nomenclature

John Hart, Chair

Small Museums

Sean Blinn, Chair

Standards and Ethics

Jennifer Huebschner, Chair

Women's History

Kim Robinson, Chair



AASLH appreciates the extraordinary support of our Institutional Partners!

Learn more about our institutional membership levels and partner benefits at aaslh.org/membership.

PLATINUM PARTNERS



Colonial Williamsburg
Colonial Williamsburg Foundation
Williamsburg, VA




CONNER PRAIRIE
STEP INTO THE STORY
Conner Prairie
Fishers, IN



MINNESOTA HISTORICAL SOCIETY
Minnesota Historical Society
St. Paul, MN



MISSOURI HISTORICAL SOCIETY
Missouri Historical Society
St. Louis, MO




VIRGINIA MUSEUM OF HISTORY & CULTURE
Virginia Museum of History & Culture
Richmond, VA

PREMIER PARTNERS



Alabama
DEPARTMENT OF ARCHIVES & HISTORY
Alabama Department of Archives and History
Montgomery, AL



Cincinnati Museum Center
Cincinnati Museum Center
Cincinnati, OH



CONNECTICUT MUSEUM OF CULTURE AND HISTORY
Connecticut Museum of Culture and History
Hartford, CT



HISTORY Colorado
History Colorado
Denver, CO



IDAHO STATE HISTORICAL SOCIETY
Idaho State Historical Society
Boise, ID



INDIANA STATE MUSEUM AND HISTORIC SITES
Indiana State Museum & Historic Sites Corporation
Indianapolis, IN



Jamestown SETTLEMENT
American Revolution MUSEUM OF YORKTOWN
Jamestown-Yorktown Foundation
Williamsburg, VA



Kentucky
HISTORICAL SOCIETY
Kentucky Historical Society
Frankfort, KY



Utah Historical Society
Utah Historical Society
Salt Lake City, UT

INSTITUTIONAL PARTNERS


(continued on page 19)



ALABAMA HISTORICAL COMMISSION
Alabama Historical Commission
Montgomery, AL



ATLANTA HISTORY CENTER
Atlanta History Center
Atlanta, GA



AUTRY MUSEUM
Autry Museum
Los Angeles, CA




BELLE MEADE HISTORIC SITE & WINERY
Belle Meade Historic Site & Winery
Nashville, TN



BILLINGS FARM & MUSEUM
Billings Farm & Museum
Woodstock, VT



BULLOCK TEXAS STATE HISTORY MUSEUM
Bullock Texas State History Museum
Austin, TX



HISTORIC VIRGINIA KEY BEACH PARK
City of Miami: Historic Virginia Key Beach Park
Key Biscayne, FL



HCA DELAWARE HISTORICAL & CULTURAL AFFAIRS
Delaware Division of Historical and Cultural Affairs
Dover, DE



Dr Pepper MUSEUM
Dr Pepper Museum
Waco, TX



NIDDERSEX
East Jersey Old Town Village
Piscataway, NJ



FEDERATION OF STATE HUMANITIES COUNCILS
Federation of State Humanities Councils
Arlington, VA




filoli
Filoli
Redwood City, CA



FORD HOUSE
EDSEL & ELEANOR
Ford House
Grosse Pointe Shores, MI



GEORGE MASON'S GUNSTON HALL
HOME OF American Rights
George Mason's Gunston Hall
Mason Neck, VA



GREAT AMERICAN SONGBOOK FOUNDATION
Great American Songbook Foundation
Carmel, IN



HEINZ HISTORY CENTER
Heinz History Center
Pittsburgh, PA



HISTORIC NEW ENGLAND
Defining the past. Shaping the future.
Historic New England
Haverhill, MA



The Historic New Orleans Collection
MUSEUM • RESEARCH CENTER • PUBLISHER
The Historic New Orleans Collection
New Orleans, LA



WE DO HISTORY.
INDIANA HISTORICAL SOCIETY
Indiana Historical Society
Indianapolis, IN

INSTITUTIONAL PARTNERS

(continued from page 18)

Thank you for your support as we continue to grow!



The Library of Virginia
Richmond, VA



Mackinac State Historic Parks
Mackinac Island, MI



Massachusetts Historical Society
Boston, MA



Michigan History Center
Lansing, MI



Mississippi Armed Forces Museum
Camp Shelby, MS



Missouri State Museum
Jefferson City, MO



Monadnock Media, Inc.
Hatfield, MA



Monticello
Charlottesville, VA



Museum of African American History
Boston, MA



Museum of History and Industry
Seattle, WA



National Civil Rights Museum
Memphis, TN



National Museum of American History
Washington, DC



National Park Service: State, Tribal and Local Plans Grants Division
Washington, D.C.



National Public Housing Museum
Chicago, IL



National Trust for Historic Preservation
Washington, DC



National World War I Museum and Memorial
Kansas City, MO



Nebraska State Historical Society
Lincoln, NE



Nemours Estate
Wilmington, DE



The New York Historical
New York, NY



New York State Museum
Albany, NY



North Carolina Department of Natural and Cultural Resources
Raleigh, NC



Ohio History Connection
Columbus, OH



Passaic County Department of Cultural and Historic Affairs
Paterson, NJ



Permanent Legacy Foundation
Austin, TX



Rancho Los Cerritos
Long Beach, CA



Richard Hampton Jenrette Foundation
Hillsborough, NC



San Augustine Public Library
San Augustine, TX



The Sixth Floor Museum at Dealey Plaza
Dallas, TX



Scottish Rite Masonic Museum & Library
Lexington, MA



State Historical Society of Missouri
Columbia, MO



State Historical Society of North Dakota
Bismarck, ND



Strawbery Banke Museum
Portsmouth, NH



The Strong
Rochester, NY



Tampa Bay History Center
Tampa, FL



Tennessee State Museum
Nashville, TN



Texas State Preservation Board
Austin, TX



Washington State Historical Society
Tacoma, WA



Wisconsin Historical Society
Madison, WI

2025 Individual Partners

These members receive additional benefits to help better their practice of history. Their additional support of AASLH increases our capacity to provide resources and support to the field.

Individual Patron

Kristin Ahlberg • Clay Bauske • Christy Coleman • John Dichtl • Cheryl Hargrove • Tamara L. Hemmerlein
Trevor Jones • Katherine D. Kane • Janice B. Klein • Thomas K. Krasean • Barbara Little • Katherine H. Maas
Thomas A. Mason • Kyle Mathers • David Novy • Bill Peterson • Erin Richardson • Tobi M. Voigt
Catherine Whalen • Kent Whitworth • Larry J. Yerdon • •

Individual Sustaining

Dorothy C. Africa • Paul "Trip" N. Anderson • Tera DuVernay • D. Stephen Elliott • Susan Ferentinos
Barbara A. Franco • Brent D. Glass • Susan Goff • Paul Growald • Nicholas J. Hoffman • Mary F. Jenkins
Paul E. Kahan • Margaret Koch • Andrea Lowery • Bruce Mendenhall • Ginger Moodie-Woodward
Gale E. Peterson • George O. Petty • Bart Roselli • Angela J. Smith • Charles M. Sullivan • Jay D. Vogt
Larry Wagenaar • Stephanie Walsh • Karin Wulf

Individual Supporting

Elizabeth W. Adams • Jacqui Ainlay-Conley • Scott Alvey • Erin Augenstein • Mary J. Autry • Sara Baer
Redmond J. Barnett • Justina C. Barrett • Rachel Baum • Tamara Biggs • Robert F. Bluthardt • Jane E. Boyd
George C. Bradley • Bill S. Bryans • Kristen M. Butler • Samonia Byford • Allison Campbell • David S. Carment
Sam H. Childers • Julie J. Coco • Rebecca Conard • Richard C. Cooper, Ed.D. • Brian T. Cory • Liz Covart
Lisa Craig Brisson • David Crosson • Bob Damon • John W. Durel • Beverly J. Elliott • Tiffani Emig
Ann Engelman • Steve Feldman • Dennis A. Fiori • Tiffany Fisk • John E. Fleming • Rosemary P. Flynn
Kim A. Fortney • Edwin P. Garretson • Tom Gibbons • Mary Ellen Goddard • Emily Greenwald • Stuart Grigg
Meredith Handakas • Susan E. Hanna • Keith Hardison • Nancy Harm • Deirdre Harris • Betsy Hedler
Lenora M. Henson • Nancy Holt • Stephen C. Iverson • Claire Jerry • Edna Johnston • Jean Jolly
Cynthia Jones • Kyrie T. Kellett • Todd Kleismit • Modupe Labode • Leo E. Landis • Jennifer S. Landry
Michelle Lavelle • Joan M. Lawson • Allyson Lazar • Chuck Lennox • Tedd Long • Michele C. Longo
Matt Mayberry • Lorraine McConaghy • George H. McDaniel • Gage McKinney • George C. Michalek
Martin V. Minner • Ben Nance • Aimee E. Newell • Matthew Patulski • Sarah B. Pharaon • Dan Pomeroy
Michael Potaski • Melissa Prycer • Lynn Rainville • Alexandra Rasic • A.J. Rhodes • Martin A. Risteen
Ruby Rogers • Julia Rose • Melanie Roth • Gary Sandling • Evelyn J. Santos • Philip V. Scarpino
Sally Anne Schmidt • Louise Schubert • David Schutz • Patricia Lyn Scott • Marsha L. Semmel • Sherri Sewall
Hope Shannon • Ronald L. Siebler • Larissa Smith • Carol Summerfield • Stacey A. Swigart • Susan Tissot
Robert B. Townsend • Deborah L. Trupin • Louis L. Tucker • Martin Tuohy • Megan van Frank • Carroll Van West
Elizabeth Wallis • Taylor Watson • Judith A. Wehn • Rose Marie Weisz • Susie Wilkening • Megan Wood
Lisa E. Worley • William Worthen • Michelle Zacks

Making History Matter Campaign

In 2025, AASLH concluded year four of a five-year, \$1-million comprehensive campaign to better help history organizations and the people who work in them to thrive as we approach the nation's 250th anniversary.

The campaign raised more than \$850,000 by the end of 2025.

Supporting the campaign enables AASLH to help small history organizations and to promote inclusive, whole history. These important goals are the basis of our efforts, growing out of the Semiquincentennial, to amplify the vital role history organizations play in democracy and civic life. We are grateful to the 140 individuals who contributed in 2025! Special thanks to these 2025 major donors:

Virginia Museum of History and Culture

\$100,000 pledge

Jenrette Foundation

\$25,000 contribution



Please donate today to help AASLH continue Making History Matter.

AASLH LEGACY SOCIETY MEMBERS

The Legacy Society members listed below have generously decided to include AASLH in their estate planning. If you would like to know more about the AASLH Legacy Society or if you are interested in joining, please contact John Dichtl at dichtl@aaaslh.org.

- | | |
|--------------------------------------|----------------------------------|
| Ms. Sylvia Alderson* | Ms. Katherine Kane |
| Mr. Bob & Ms. Candy Beatty | Mr. Dennis A. O'Toole |
| Ms. Melissa Bingmann | Ms. Ruby Rogers |
| Mr. Robert M. & Ms. Claudia H. Brown | Mr. David J. Russo |
| Ms. Mary Case & Mr. Will Lowe | Mr. Will Ticknor |
| Mr. Stephen & Ms. Diane Elliott | Mr. Max and Ms. Mary van Balgooy |
| Mr. John Frisbee* | Mr. Jim* and Ms. Janet Vaughan |
| Mr. J. Kevin Graffagnino | Mr. George L. Vogt |
| Mr. John A. Herbst | Anonymous |
| Mr. H.G. Jones* | |

*Deceased

THANK YOU DONORS

Annual Fund

Over \$5,000	\$1,000–\$1,999	\$500–\$999	\$250–\$499
Sandra Clark	Alfred E. Mann Charities, Inc. Erin A. Carlson Mast Christy Coleman John Dichtl Sarah Jencks Katherine D. Kane and John Kelsey Vicky L. Kruckeberg and Carl R. Nold Dennis A. O'Toole Jean M. Svadlenak	Steve Boyd-Smith Kim A. Fortney W. Todd Groce Mary F. Jenkins Burt Logan Nicola Longford Susan E. Miner Ruby Rogers Pattie Smith Sarah W. Sutton George L. Vogt	Paul "Trip" N. Anderson Chuck Arning Melissa R. Bingmann Charan Devereaux Barbara Moore James Pepper Henry Jennifer Saunders Scott L. Wands
\$2,500–\$4,999			
Lisa Y. Lee			

\$100–\$249			
Anne W. Ackerson Timothy J. Chester Dante M. Centuori Stephen S. Elliott Lisa Eriksen Benjamin Filene Susan Finkel James B. Gardner Linnea M. Grim	Bethany Hawkins Tamara L. Hemmerlein Barbara J. Howe John C. Holtzapple Mark Hofer Terry Jackson Margaret Koch Kimberly Kronwall Janice B. Klein	Alice Knierim Jennifer S. Landry Thomas Lewis Larry Landis John G. Marks Robert B. McEwen Virginia Paganelli Caruso Gale E. Peterson Bill Peterson	Melissa Prycer Rey Regenstreif-Harms Stanley A. Ransom Kathie A. Schey Ryan J. Spencer Samuel Stephens Deborah L. Trupin J. Eric Taylor Amy Vandegrift

Up to \$99			
Elizabeth W. Adams Dorothy C. Africa African American Museum of Southern Arizona Alexandria Historical and Genealogical Library and Museum Scott Alvey Tracy Baetz Tamara Biggs Blacks of the Chesapeake Foundation, Inc. Minnette Boesel Laura Botts Andrew Bowen Linda Brownlee Pearson Bill S. Bryans Nathan Buchanan Alan Burley Samonia Byford George W. Bain Dan Barron Stephen Bartkus Bear Wallow Books Beaufort History Museum Nancy Bell John Benge Janna Bennett J. Kent Calder	City of Centerville: Whitaker Museum Madeline Cole Rebecca Conard Mary Condon Laura Cone Jonathan Coopersmith Sandra Campbell David S. Carment Carolina Museum of the Marine Mari Carpenter Paul Carr Ricardo Chavez Gail Christiancy Churchill County Museum Mark Davidson Michael Duchemin Terry L. Davis David De Leon Alphonse DeSena Glenn Dives William Dore Jessica Dorman Raymond Doswell Timothy Draper East Hillsborough Historical Society Eisterhold Associates, Inc.	Elizabethtown Preservation Associates: Winters Heritage House Museum Curtis Ellison Deborah Emmons-Andarawis Karen Fisk Cheryl Fox Barbara A. Franco Damon Freeman Theresa Gamble George Garner Christopher Godbold Dean Goldfein Allan B. Goodrich Stuart Grigg Charlotte Gwin Donna Halper Historic Washington Foundation Benjamin J. Hruska Debra K. Hughes Maryl Kacir Huntington Cheryl Hargrove Nicole Harvey Havre de Grace Decoy Museum, Inc. Cynthia Hedrick Day Kara Heitz Emily Hermans	Nina Herzog Lisa Hirschfield Indiana University: Eskenazi School of Art- Sage Collection Tramia Jackson Ivan Jurin Christopher Kemmerer Todd Kleismit Thomas K. Krasean Nancy Krueger Anne Lackey Lake Erie Islands Historical Society Joan M. Lawson Maria Q. Leiby Lemay Community Historical Society Barbara Little Kat Lloyd Amy Loch Veronica Makowsky Pamela McGuire Susan M. McLeod Kate Merrick Betsy Millard Randall Miller Martin V. Minner Brenda Monahan Alison Moore

Annual Fund

continued

Up to \$99			
<p>Cecelia Moore Verlyn Mueller Andrea Malcomb Museum of Madeiran Heritage Kaye Myers Dennis Mar Thomas A. Mason Leslie Masson Anne C. McCudden George H. McDaniel Jean McGavin Thomas C. McGowan Cindy Nagel New Jersey Fire Museum Aaron Noble Norfolk Historical Society Aurora A. Northgraves Northport Historical Society Nova Scotia Museum Oregon Area Historical Society & Museum</p>	<p>Paul Orselli Pan Am Museum Foundation: Cradle of Aviation Museum Lori Parker Marilyn Parrish Pigeon-Tech Plainfield Township Historical Commission Heather Quist Rancho Los Alamitos Martin A. Risteen Debra Roussopoulos Elizabeth Russell John Russick Susan Redman-Rengstorf Robert Reeder Tom Reger Debra A. Reid Rex Martin NIBCO Interactive Museum A.J. Rhodes Erin Richardson</p>	<p>Richland County Historical Society: Oak Hill Cottage Karen Sawyer Thomas A. Scott Susan P. Schrieber Patricia Lyn Scott Phil Sexton Beverly K. Sheppard Patricia Shymanski Shiloh Museum of Ozark History Kelli Shapiro Christine Simek Barbara Skryja Angela J. Smith Somerville Museum Sons of the Revolution in the State of New York: Fraunces Tavern Museum Megan Spainhour Rodger E. Stroup</p>	<p>St. Marys Submarine Museum Hayes Strader James Sturgill Kathleen Swann Telluride Historical Museum Tovrea Carraro Society Trempealeau Community Heritage Society Inc. Joanna Torow Tile Heritage Foundation Kurt Updegraff Christie Weinger Susan West Montgomery Wabash County Historical Museum Camille Williams Reginald White Stephanie Walsh Waterville Valley Historical Society Bryan Whitledge</p>

History Leadership Institute Scholarship Fund	Small Museums Scholarship Fund		Donations Given in Honor or in Memory of
<p>Up to \$250 Barbara J. Howe Martha M. Shannon</p>	<p>\$500 Janice B. Klein</p>	<p>Up to \$499 Pierce Dyne Brian Failing</p>	<p>Cinnamon Catlin-Legutko Memorial Fund Brian Crockett Dr. John Dichtl Barbara and John Fero Dr. John Fleming Dorethea "Charlie" Gholson Mary Kronwall Jean Mangum James Vaughan</p>



Making History Matter

Up to \$99

<p>Doug Alves Elizabeth W. Adams Paul "Trip" N. Anderson Scott Alvey Terry C. Abrams Angie Albright Andrew Bowen Bill S. Bryans Blacks of the Chesapeake Foundation, Inc. Buffalo Soldiers Museum George W. Bain Laura Botts Samonia Byford Sean Blinn Janna Bennett Alicia C. Batko Becky Cornett Carolyn Crouch City of Centerville: Whitaker Museum Claire Cocciole David S. Carment Debra Couture Gail Christiancy</p>	<p>Kristen Chambers Nolan M. Cool Laura Cone Madeline Cole Paul Carr Michael DiMaggio Alexandra Deselms Curtis Ellison East Hillsborough Historical Society Conny C. Graft Dean Goldfein Emily Greenwald Grady County Historical Society James B. Gardner Janet Gallimore Alan Hoff Cynthia Hedrick Day Mark Howell Maryl Kacir Huntington Margaret Koch Barbara Little Frank Leone Joan M. Lawson</p>	<p>Lemay Community Historical Society Rena Lawrence Anne Miller Betsy Millard Deborah K. Morgan Douglass W. McDonald Gusta McMorrow Leslie Masson Museum Muse LLC Cindy Nagel Susan R. Near Aurora A. Northgraves Marilyn Parrish Pan Am Museum Foundation: Cradle of Aviation Museum Michele Phillips Heather Quist Susan Redman-Rengstorf Debra A. Reid Debra Roussopoulos Mark Rice A.J. Rhodes Rey Regenstreif-Harms Angela J. Smith Christine Senese</p>	<p>Leishawn Spotted Bear Ryan J. Spencer Smith's Castle Somerville Museum Sons of the Revolution in the State of New York: Fraunces Tavern Museum Susan P. Schrieber St. Marys Submarine Museum Phil Sexton Siena College's McCormick Center for the Study of the American Revolution Kelli Shapiro Karen Sawyer Telluride Historical Museum Tovrea Carraro Society Gina Vergara-Bautista Bryan Whitledge Robert T. Williams Scott L. Wands Suzanne Whallon Wabash County Historical Museum Lisa E. Worley Lindsey Weaver</p>
--	--	---	---

\$100–\$50,000

<p>\$50,000 Virginia Museum of History & Culture</p> <p>\$25,000–\$49,999 Richard Hampton Jenrette Foundation</p> <p>\$10,000–\$24,999 Vicky L. Kruckeberg and Carl R. Nold</p> <p>\$5,000–\$9,999 Sandra S. Clark Katherine D. Kane and John Kelsey Andrea Lowery Michael H. Staenberg</p>	<p>\$2,500–\$4,999 Barbara A. Franco Richard M. Josey Tom Pfannenstiel Donna K. Sack</p> <p>\$1,500–\$2,499 Norman and Sandra Burns Douglas E. Evelyn Mary & Max van Balgooy P. Nina Zannieri</p> <p>\$1,000–\$1,499 M. Susan Barger Michelle Banks Christy Coleman John Dichtl John W. Durel Ben Garcia Lisa Y. Lee Ruby Rogers Kenneth C. Turino</p>	<p>\$500–\$999 Steve Boyd-Smith Creigh Family Foundation Lawrence Catlin-Legutko Rowena and Kevin Dasch Daniel Feller Karen M. Goering Stuart Grigg Marsha L. Semmel Tobi M. Voigt</p> <p>\$250–\$499 Alison Bruesehoff Minnette Boesel Karen Daly Thomas and Lynn Dotson Stephen Elliott Maria Q. Leiby Shae A. Nawoj</p>	<p>\$100–\$249 Frederick J. Augustyn Jacqui Ainlay-Conley Patricia Cullinan Kim A. Fortney Jennifer Huebscher Tamara L. Hemmerlein Anne Lackey Gale E. Peterson Nathan Richie Alexandra Rasic Judith Robins Martha M. Shannon Deborah L. Trupin Christie Weininger Susan B. Wageman</p>
---	---	--	--

Thank you for your continued support!

Council Officers

As of December 2025



Christy Coleman*
Chair
Jamestown-Yorktown
Foundation
Williamsburg, VA



Erin Carlson Mast*
Vice Chair
Lincoln Presidential
Foundation
Springfield, IL



Burt Logan*
Immediate Past Chair
Carmichael, CA



Scott Wands*
Secretary
Connecticut Humanities
Hartford, CT



Christie Weininger*
Treasurer
Hayes Presidential Library
and Museums
Fremont, OH

* AASLH Executive Committee

Council Members

As of December 2025

Lisa Anderson
Class of 2026
National Baseball Hall of
Fame and Museum
Cooperstown, NY

JerriAnne Boggis
Class of 2026
Black Heritage Trail of New
Hampshire
Portsmouth, NH

Alison Bruesehoff
Class of 2026
Rancho Los Cerritos
Long Beach, CA

Lisa Yun Lee
Class of 2026
National Public Housing
Museum

Kim Fortney*
Class of 2027
National History Day
College Park, MD

Veronica Gallardo
Class of 2027
Surratt House Museum
Clinton, MD

Margaret Koch
Class of 2027
Bullock Texas State History
Museum
Austin, TX

Andrea Lowery*
Class of 2027
Pennsylvania Historical
and Museum Commission
Harrisburg, PA

Jamie Bosket
Class of 2028
Virginia Museum of History
and Culture
Richmond, VA

James Pepper Henry*
Class of 2028
Kaw Nation / Kanza
Heritage Society
Kaw City, OK

Ashley Jordan
Class of 2028
African American Museum
of Philadelphia
Philadelphia, PA

Chieko Phillips
Class of 2028
4Culture
Seattle, WA

Scott Alvey
Class of 2028
Kentucky Historical Society
Frankfort, KY

Karen Fisk
Class of 2029
Stowe Center for Literary
Activism
Hartford, CT

Ben Garcia
Class of 2029
The American LGBTQ+
Museum
New York, NY

Tamara Hemmerlein
Class of 2029
Indiana Historical Society
Indianapolis, IN



AASLH Has a New Home

In September, AASLH relocated its headquarters in Nashville, Tennessee. After nine years at Convent Place, near Vanderbilt University, we moved to new offices at the BNA Corporate Center, 404 BNA Drive, just west of the Nashville International Airport. Almost half of our staff members now work remotely from other states: Connecticut, Iowa, Maryland, New Jersey, and Virginia. Come visit us if you're ever in Nashville!

AASLH | 404 BNA Drive, Suite 105 | Nashville, TN 37217

AASLH Staff

Matt Arthur
Professional Development Manager

Aja Bain
Director, Professional Development and
Publications

John Dichtl
President and CEO

Bethany Hawkins
Executive Vice President and Chief
Operating Officer

John Garrison Marks
Vice President, Research and Engagement

Rebecca Mendez
Professional Development Manager

Eric Morse
Director, Marketing and Membership

Rey Regenstreif-Harms
Senior Manager, Membership Data and
Development

Madeleine Rosenberg
Director, Research and Strategic Initiatives
*This position is made possible with support
from the William G. Pomeroy Foundation*

Becky Schoenbachler
Professional Development Coordinator

Megan Spainhour
Office and Membership Coordinator

Felicia Sudmeier
Development and Marketing Coordinator

Statement of Financial Position

FY 2024 Audited Statements Year Ending June 30, 2025

CURRENT ASSETS

	2025	2024
Cash and cash equivalents	\$739,022	\$647,607
Restricted cash	\$127,977	\$18,264
Accounts receivable	\$2,200	\$94,653
Other assets	\$128,743	\$118,708
Total current assets	\$997,942	\$879,232
Property and equipment	\$4,036	\$3,905
Right-of-Use assets	\$13,350	\$62,895
Investments, substantially restricted	\$2,674,391	\$2,560,957
Total assets	\$3,689,719	\$3,506,989

LIABILITIES AND NET ASSETS

Current liabilities	2025	2024
Accounts payable	\$224,319	\$218,025
Unearned membership dues	\$401,130	\$395,516
Unearned revenue	\$290,555	\$223,987
Current portion of operating lease liability	\$13,350	\$49,545
Total current liabilities	\$929,354	\$887,073
Long-term operating lease liability	\$0	\$13,350
Total liabilities	\$929,354	\$900,423
Net assets		
Without donor restrictions	(\$76,994)	(\$107,054)
With donor restrictions	\$2,837,359	\$2,713,620
Total net assets	\$2,270,365	\$2,606,566
Total liabilities and net assets	\$3,689,719	\$3,506,989

STATEMENT OF ACTIVITIES

Revenues, gains, and other support	Without Donor Restrictions	With Donor Restrictions	Total
Total revenues, gains, and other support	\$2,100,886	\$123,739	\$2,224,625
Operating expenses	\$598,118	\$0	\$598,118
Supporting services	\$1,472,708	\$0	\$1,472,708
Total operating expenses	\$2,070,826		\$2,070,826
Change in net assets from operations	\$30,060	\$123,739	\$153,799
Net assets, beginning of year	(\$107,054)	\$2,713,620	\$2,606,566
Net assets, year-end	(\$76,994)	\$2,837,359	\$2,760,365
Statement of cash flow	FY2025	FY2024	
Net increase (decrease) in cash and cash equivalents	\$201,128	\$48,909	
Cash and cash equivalents, beginning of year	\$665,871	\$776,786	
Total	\$866,999	\$825,695	