

# 2025 ANNUAL REPORT



## CONTENTS

- ② From the President and Council Chair
- ③ Defending and Uplifting Our Field
- ④ Professional Development
- ⑥ Annual Conference and Awards
- ⑨ Membership and Committees
- ⑬ Making History Matter and Annual Fund
- ⑱ Statement of Financial Position





## From the President and CEO

While preparing for the arrival of the nation's 250th anniversary, we faced several challenges in 2025 from the White House that sought to diminish our field. AASLH rapidly expanded its efforts to resist federal funding and staffing cuts, grant cancellations, and attempts to narrow historical practice and whitewash history. We continued to call for a 250th that would be honest and inclusive, experienced by most Americans at the grassroots level. At the same time, AASLH conducted a history workforce survey, expanded its professional trainings, saw its membership grow, and held a record-setting conference in Cincinnati. It was a whirl of a year in which our members came through every time we asked them to.

John R. Dichtl  
President & CEO, AASLH



## From the Council Chair

In study after study, the public relies on history organizations to share our past with scholarship and innovation which engenders deep trust. For over 100 years, AASLH has advocated for the field ensuring creative and academic independence our communities rely upon. In these challenging times, we remain committed to these ideals. Thank you for being on the journey.

Christy S. Coleman  
Executive Director  
Jamestown-Yorctown Foundation

## National Survey of History Practitioners

A groundbreaking survey conducted by AASLH in 2025 collected data on who works in the history field, how they are compensated, and how they feel about their work.

We were hoping for 1,000 responses. We received almost 4,000.



The findings reveal significant challenges related to equity, sustainability, and career advancement, but also highlight opportunities to strengthen the profession and better support those who dedicate their lives to history.

It's time for our field to have discussions about these issues that lead to change. Join AASLH programs and conversations throughout 2026 and beyond to build a stronger and more sustainable field.

# Defending and Uplifting Our Field

Through speciously worded presidential and agency orders, incendiary rhetoric, mass layoffs and funding cuts at federal cultural agencies, and more, in 2025 the new presidential administration launched a steady campaign to break down our nation’s historical infrastructure and remake it in service of an exclusive, inaccurate vision of America’s past and present. The White House particularly targeted some of the field’s leading models, including the Smithsonian Institution and National Park Service, as well as crucial federal agencies such as the National Endowment for the Humanities and Institute of Museum and Library Services (IMLS). Together, these attacks on historical expertise, best practices, and resources have put an immense strain on the history community.

AASLH responded to defend our members, the field, and the public they serve.

On September 3, AASLH and a coalition of partners [jointly filed an amicus brief](#) at the federal appellate level in *Rhode Island v. Trump*, a lawsuit brought to stop White House efforts to dismantle IMLS. In November, the federal district judge in the case issued a permanent injunction blocking the administration from further harm to IMLS and ordering the restoration of grants. The administration is appealing that decision.

In August, AASLH and the Organization of American Historians, Association for the Study of African American Life and History, Association of African American Museums, and National Council on Public History [issued a statement](#) to defend a full understanding of the past and its relevance to today at National Park Service sites.

Throughout the year, AASLH collected stories of how state and federal actions are impacting the field. We considered additional legal options. AASLH also spoke up for history in the news media and relied on our extensive [Reframing History research](#) and related studies to show how most Americans support complete and accurate tellings of history.

## What Can You Do?

### Become a member or renew your membership with AASLH

Membership revenue directly supports our advocacy.

### Sign Up for Advocacy Alerts

AASLH will contact you when you can advocate for federal support of the field.

### Use AASLH Training

The Reframing History report and toolkit can help you effectively communicate about the value of history. AASLH regularly offers **online training** to improve your communication and advocacy skills.

### Make a donation to AASLH’s Annual Fund

We’ll use the funds to develop research and training that powers our advocacy.

## Professional Development and Trainings

From volunteers to paid staff, AASLH provides comprehensive training in all areas of running a history organization. See and register for our training programs at [learn.aaslh.org](https://learn.aaslh.org).

### Online Learning

Our **Instructor-Led Online Courses** consistently sell out. **565** people took these courses in 2025, including *Basics of Archives*, which returned due to popular demand.

**Webinars** are the most attended form of training AASLH offers, with almost **4,000** attendees in 2025. Our webinars about the Native American Graves Protection and Repatriation Act and historic cemeteries were so well attended that we are offering additional programs in these areas. The most popular webinar of 2025, Digital Archiving Grants with Permanent.org, had 357 registrants.



### Interpreting Historic House Museums Today

Sponsored by the Richard Hampton Jenrette Foundation

In April, leaders in the field of historic house museums gathered to discuss how these museums communicate the stories and meanings of their collections, buildings, and landscapes as well as what the future holds for engaging audiences with these historic places. The summit was held at the Ford House in Grosse Pointe Shores, Michigan.



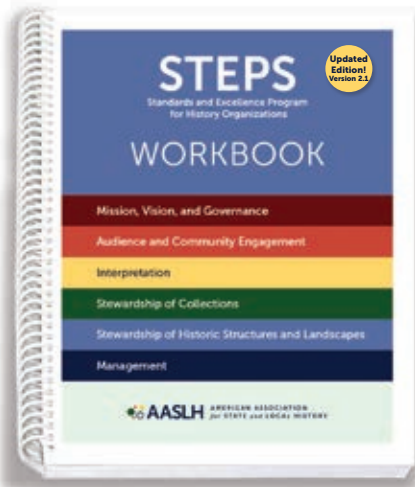
### Small Museums, Important Collections

Sponsored by PastPerfect Museum Software

Small museums face a unique set of collections challenges, often related to limited resources, staff capacity, and infrastructure. This summit provided crucial guidance and identified challenges and opportunities for small museum collections care in the future.



Andrea Jones gave the opening keynote at the Interpreting Historic House Museums Today summit.



## Standards and Excellence Program (STEPS) for History Organizations

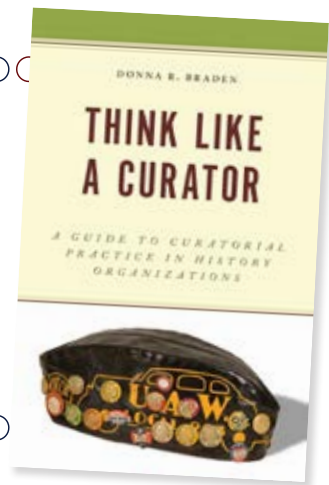
Congratulations to the history organizations that invested in improving their operations to meet national museum standards with AASLH's STEPS. Congratulations to the **77** organizations that earned certificates in 2025.

**Can STEPS Help Your Organization? Learn more and enroll at [aash.org](https://aash.org).**



## Book Series

The new addition to the AASLH Book Series in 2025 was *Think Like a Curator: A Guide to Curatorial Practice in History Organizations* by Donna Braden. AASLH members receive 20% off books year-round.



## History Leadership Institute



The Minnesota Historical Society hosted our 2025 History Leadership Institute Seminar, which took place in Minneapolis in June. Twenty-five fellows representing seventeen states and Canada enjoyed two weeks of discussion, presentations, and tours.

# 2005 Annual Conference



## Sept. 10–13 in the “Queen City”

At 1,063 registrants, this was AASLH’s fourth largest annual conference, behind only Baltimore (1,400 people in 1999), Philadelphia (1,288 people in 2019), and New Orleans (1,100 people in 2000). The weather was pristine, the city and local host sites were inviting, and the buzz was positive.



The Exhibit Hall was full of vendors with products and services to help museums and historic sites.

Don't miss  
the 2026  
joint conference  
with the  
National Council  
on Public History!

Registration opens in May.

The logo for the 2026 Joint Conference features a stylized blue hand holding a quill pen. To the right of the hand, the text "2026 JOINT CONFERENCE" is stacked in red, with "September 16-19" and "Providence, RI" in smaller blue text below it. Below this, the phrase "The Work of" is in red, and "REVOLUTION" is in large, bold, blue letters. At the bottom, the full names of the organizing bodies are listed in blue: "American Association for State and Local History" and "National Council on Public History".

# 2005 Annual Conference



*Above & Right:* The Cincinnati Museum Center, located in Union Terminal, impressed attendees with its distinctive architecture and its museums.

*Top Right:* Don Wildman, host of *Mysteries at the Museum* and other programs, spoke about how museums and historic sites can collaborate with media, educators, and other civic institutions to recenter history in American life.



*Above:* Some conference sessions offered participants opportunities for hands-on learning.

*Right:* An evening event at the National Underground Railroad Freedom Center.

*Bottom Right:* A highlight of each conference is the Leadership in History Awards Presentation.





# 2025 Leadership In History Awards

## AWARD OF DISTINCTION



**Larry Yerdon** received the Award of Distinction for transforming Hancock Shaker Village and Strawberry Banke Museum into models of innovation, sustainability, and community engagement.

## ALBERT B. COREY AWARD

The Albert B. Corey Award recognizes primarily volunteer-operated historical organizations and projects that best display the qualities of vigor, scholarship, and imagination in their work. It is AASLH's most prestigious award for all-volunteer institutions and initiatives.



**United Lynn Pride** of Lynn, Massachusetts, was recognized for the project

***Through a Rainbow Lens: A Reflection on Lynn's LGBTQ+ History.*** This project documented, shared, and preserved the city's LGBTQ+ stories and places.

## HISTORY IN PROGRESS (HIP) AWARDS

The History in Progress Award is a special recognition for winners that are particularly inspiring and creative and is only given to 5 percent or fewer of the total awardees per year.

**Louisville Story Program** (Louisville, Kentucky), for ***I'm Glad About It: The Legacy of Gospel Music in Louisville, 1958-1981.*** This rich and multifaceted



project preserved the legacy of Black gospel music in Louisville through deep community engagement and cultural reclamation of recordings and photos.



**Detroit Historical Society** (Detroit, Michigan) for ***The Hustle: Celebrating Detroit's Unsung Entrepreneurs.*** The Detroit Historical Society launched *The Hustle* in 2022 to celebrate Detroit's unsung Black entrepreneurs.

# Membership

Members are the national history community that support each other and AASLH. Your membership dues are the largest single source of revenue for AASLH, powering everything the association does for the field. Thank you for keeping our field and community strong by investing in AASLH!

## Membership Committee Returns

AASLH wants to expand our community and serve all of the nation's 21,000 history organizations. As part of our efforts to increase membership, we've revived the Membership Committee. Two subcommittees are working to increase Institutional Membership and help AASLH connect with history practitioners under the age of 40. Thank you to Laurie Egan-Hedley and Jina Lee for serving as chairs of these subcommittees, and all the committee members for their work to grow membership.

## Committees

Thank you to all the members who serve on committees, which help AASLH conduct its business or support the field by developing training and resources.

### 2025 Annual Conference Host

Rebekah Beaulieu and Whitney Owens, Co-Chairs

### 2025 Annual Conference Program

Aaron Noble, Chair

### Audit

Mindi Love Pendergraft, Chair

### Awards

Jason Crabill, Chair

### Climate and Sustainability

Kathy Garrett-Cox, Chair

### Diversity and Inclusion

Veronica Gallardo, Chair

### Editorial Advisory

Rebekah Beaulieu, Chair

### Educators and Interpreters

Bethany Hrachovec, Chair

### Field Services Alliance

Erik London, Chair

### Finance

Christie Weinger, Treasurer

### Gender Discrimination / Sexual Harassment Task Force

### Governance

Kim Fortney and Jim Pepper Henry, Co-Chairs

### Historic House

Rena Lawrence and Lisa E. Worley, Co-Chairs

### History Leadership Institute Advisory

### Investment

Jeff Matsuoka, Chair

### 2026 Joint Conference Host

Morgan Grefe and Karin Wulf, Co-Chairs

### 2026 Joint Conference Program

Jennifer Saunders and Kacie Lucchini Butcher, Co-Chairs

### Leadership Nominating Committee

Erin Carlson Mast and Norman Burns, Co-Chairs

### Making History Matter Campaign

Erin Carlson Mast, Chair

### Military History

Myers Brown, Chair

### National Historical Publications and Records Commission Representative

Darin Waters

### National History Day Advisory Board Representative

Allison Wickens

### Nomenclature

John Hart, Chair

### Small Museums

Sean Blinn, Chair

### Standards and Ethics

Jennifer Huebschner, Chair

### Women's History

Kim Robinson, Chair



**AASLH** appreciates the extraordinary support of our Institutional Partners!

Learn more about our institutional membership levels and partner benefits at [aaslh.org/membership](http://aaslh.org/membership).

## PLATINUM PARTNERS



*Colonial Williamsburg*  
Colonial Williamsburg Foundation  
Williamsburg, VA




**CONNER PRAIRIE**  
STEP INTO THE STORY  
Conner Prairie  
Fishers, IN



**MINNESOTA HISTORICAL SOCIETY**  
Minnesota Historical Society  
St. Paul, MN



**MISSOURI HISTORICAL SOCIETY**  
Missouri Historical Society  
St. Louis, MO



**VIRGINIA MUSEUM OF HISTORY & CULTURE**  
Virginia Museum of History & Culture  
Richmond, VA

## PREMIER PARTNERS



*Alabama*  
DEPARTMENT OF ARCHIVES & HISTORY  
Alabama Department of Archives and History  
Montgomery, AL



**Cincinnati Museum Center**  
Cincinnati Museum Center  
Cincinnati, OH




**HISTORY Colorado**  
History Colorado  
Denver, CO



**IDAHO STATE HISTORICAL SOCIETY**  
Idaho State Historical Society  
Boise, ID



**INDIANA STATE MUSEUM AND HISTORIC SITES**  
Indiana State Museum & Historic Sites Corporation  
Indianapolis, IN



*Jamestown SETTLEMENT*  
*American Revolution MUSEUM OF YORKTOWN*  
Jamestown-Yorktown Foundation  
Williamsburg, VA



*Kentucky*  
HISTORICAL SOCIETY  
Kentucky Historical Society  
Frankfort, KY



**Utah Historical Society**  
Utah Historical Society  
Salt Lake City, UT

## INSTITUTIONAL PARTNERS

(continued on next page)


THANK YOU for your support as we continue TO GROW!



**ALABAMA HISTORICAL COMMISSION**  
Alabama Historical Commission  
Montgomery, AL



**ATLANTA HISTORY CENTER**  
Atlanta History Center  
Atlanta, GA



**AUTRY MUSEUM**  
Autry Museum  
Los Angeles, CA




**BELLE MEADE**  
HISTORIC SITE & WINERY  
Belle Meade Historic Site & Winery  
Nashville, TN



**BILLINGS FARM & MUSEUM**  
Billings Farm & Museum  
Woodstock, VT



**BULLOCK TEXAS STATE HISTORY MUSEUM**  
Bullock Texas State History Museum  
Austin, TX



**CITY OF MIAMI: HISTORIC VIRGINIA KEY BEACH PARK**  
City of Miami: Historic Virginia Key Beach Park  
Key Biscayne, FL



**HCA**  
DELAWARE HISTORICAL & CULTURAL AFFAIRS  
Delaware Division of Historical and Cultural Affairs  
Dover, DE



**Dr Pepper MUSEUM**  
Dr Pepper Museum  
Waco, TX



**filoli**  
Filoli  
Redwood City, CA



**FORD HOUSE**  
EDSEL & ELEANOR  
Ford House  
Grosse Pointe Shores, MI



**GEORGE MASON'S GUNSTON HALL**  
HOME OF American Rights  
George Mason's Gunston Hall  
Mason Neck, VA



**Great American Songbook Foundation**  
Great American Songbook Foundation  
Carmel, IN



**Heinz History Center**  
Heinz History Center  
Pittsburgh, PA



**HISTORIC NEW ENGLAND**  
Defining the past. Shaping the future.  
Historic New England  
Haverhill, MA



**The Historic New Orleans Collection**  
MUSEUM • RESEARCH CENTER • PUBLISHER  
The Historic New Orleans Collection  
New Orleans, LA



**WE DO HISTORY.**  
INDIANA HISTORICAL SOCIETY  
Indiana Historical Society  
Indianapolis, IN

**INSTITUTIONAL PARTNERS**  
(continued from previous page)



**LIBRARY OF VIRGINIA**  
The Library of Virginia  
Richmond, VA



**Mackinac State Historic Parks**  
Mackinac Island, MI



**Mashantucket Pequot Museum & Research Center**  
Mashantucket, CT



**Massachusetts Historical Society**  
Founded 1791  
Massachusetts Historical Society  
Boston, MA




**Michigan History Center**  
Michigan History Center  
Lansing, MI



**MISSISSIPPI ARMED FORCES MUSEUM**  
CAMP SHELBY  
Mississippi Armed Forces Museum  
Camp Shelby, MS



**MISSOURI STATE PARKS**  
Missouri State Museum  
Jefferson City, MO



**Monadnock Media, Inc.**  
Hatfield, MA



**Monticello**  
Charlottesville, VA



**Museum of African American History**  
Boston, MA



**Museum of History and Industry**  
Seattle, WA



**National Civil Rights Museum**  
AT THE LORRAINE MOTEL  
National Civil Rights Museum  
Memphis, TN



**National Council on Public History**  
Indianapolis, IN



**National Museum of American History**  
Washington, DC



**National Public Housing Museum**  
National Public Housing Museum  
Chicago, IL



**National Trust for Historic Preservation**  
National Trust for Historic Preservation  
Washington, DC



**National World War I Museum and Memorial**  
National World War I Museum and Memorial  
Kansas City, MO



**Nebraska State Historical Society**  
Nebraska State Historical Society  
Lincoln, NE



**Nemours Estate**  
Nemours Estate  
Wilmington, DE



**The New York Historical**  
The New York Historical  
New York, NY



**New York State Museum**  
New York State Museum  
Albany, NY



**North Carolina Department of Natural and Cultural Resources**  
North Carolina Department of Natural and Cultural Resources  
Raleigh, NC



**Ohio History Connection**  
Ohio History Connection  
Columbus, OH



**Passaic County Department of Cultural and Historic Affairs**  
Passaic County Department of Cultural and Historic Affairs  
Paterson, NJ



**Permanent Legacy Foundation**  
Permanent Legacy Foundation  
Austin, TX



**Rancho Los Cerritos**  
Rancho Los Cerritos  
Long Beach, CA



**Richard Hampton Jenrette Foundation**  
Richard Hampton Jenrette Foundation  
Hillsborough, NC




**San Augustine Public Library**  
San Augustine Public Library  
San Augustine, TX



**The Sixth Floor Museum at Dealey Plaza**  
The Sixth Floor Museum at Dealey Plaza  
Dallas, TX



**Scottish Rite Masonic Museum & Library**  
Scottish Rite Masonic Museum & Library  
Lexington, MA



**State Historical Society of Missouri**  
SHSMO  
OUR HOME - OUR HISTORY  
State Historical Society of Missouri  
Columbia, MO



**State Historical Society of North Dakota**  
STATE HISTORICAL SOCIETY OF NORTH DAKOTA  
State Historical Society of North Dakota  
Bismarck, ND



**Strawbery Banke Museum**  
STRAWBERY BANKE  
PORTSMOUTH, NH  
Strawbery Banke Museum  
Portsmouth, NH



**The Strong National Museum of Play**  
the strong  
NATIONAL MUSEUM OF PLAY  
The Strong  
Rochester, NY



**Tampa Bay History Center**  
Tampa Bay History Center  
Tampa, FL



**Tennessee State Museum**  
Tennessee State Museum  
Nashville, TN



**Texas State Preservation Board**  
STATE PRESERVATION BOARD  
Texas State Preservation Board  
Austin, TX



**Washington State Historical Society**  
WASHINGTON STATE HISTORICAL SOCIETY  
Washington State Historical Society  
Tacoma, WA



**Wisconsin Historical Society**  
WISCONSIN HISTORICAL SOCIETY  
Wisconsin Historical Society  
Madison, WI

# 2025 Individual Partners

These members receive additional benefits to help better their practice of history. Their additional support of AASLH increases our capacity to provide resources and support to the field.

## Individual Patron

Kristin Ahlberg • Clay Bauske • Christy Coleman • John Dichtl • Cheryl Hargrove • Tamara L. Hemmerlein  
Trevor Jones • Katherine D. Kane • Janice B. Klein • Thomas K. Krasean • Barbara Little • Katherine H. Maas  
Thomas A. Mason • Kyle Mathers • David Novy • Bill Peterson • Erin Richardson • Tobi M. Voigt  
Catherine Whalen • Kent Whitworth • Larry J. Yerdon • •

## Individual Sustaining

Dorothy C. Africa • Paul "Trip" N. Anderson • Tera DuVernay • D. Stephen Elliott • Susan Ferentinos  
Barbara A. Franco • Brent D. Glass • Susan Goff • Paul Growald • Nicholas J. Hoffman • Mary F. Jenkins  
Paul E. Kahan • Margaret Koch • Andrea Lowery • Bruce Mendenhall • Ginger Moodie-Woodward  
Gale E. Peterson • George O. Petty • Bart Roselli • Angela J. Smith • Charles M. Sullivan • Jay D. Vogt  
Larry Wagenaar • Stephanie Walsh • Karin Wulf

## Individual Supporting

Elizabeth W. Adams • Jacqui Ainlay-Conley • Scott Alvey • Erin Augenstein • Mary J. Autry • Sara Baer  
Redmond J. Barnett • Justina C. Barrett • Rachel Baum • Tamara Biggs • Robert F. Bluthardt • Jane E. Boyd  
George C. Bradley • Bill S. Bryans • Kristen M. Butler • Samonia Byford • Allison Campbell • David S. Carment  
Sam H. Childers • Julie J. Coco • Rebecca Conard • Richard C. Cooper, Ed.D. • Brian T. Cory • Liz Covart  
Lisa Craig Brisson • David Crosson • Bob Damon • John W. Durel • Beverly J. Elliott • Tiffani Emig  
Ann Engelman • Steve Feldman • Dennis A. Fiori • Tiffany Fisk • John E. Fleming • Rosemary P. Flynn  
Kim A. Fortney • Edwin P. Garretson • Tom Gibbons • Mary Ellen Goddard • Emily Greenwald • Stuart Grigg  
Meredith Handakas • Susan E. Hanna • Keith Hardison • Nancy Harm • Deirdre Harris • Betsy Hedler  
Lenora M. Henson • Nancy Holt • Stephen C. Iverson • Claire Jerry • Edna Johnston • Jean Jolly  
Cynthia Jones • Kyrie T. Kellett • Todd Kleismit • Modupe Labode • Leo E. Landis • Jennifer S. Landry  
Michelle Lavelle • Joan M. Lawson • Allyson Lazar • Chuck Lennox • Tedd Long • Michele C. Longo  
Matt Mayberry • Lorraine McConaghy • George H. McDaniel • Gage McKinney • George C. Michalek  
Martin V. Minner • Ben Nance • Aimee E. Newell • Matthew Patulski • Sarah B. Pharaon • Dan Pomeroy  
Michael Potaski • Melissa Prycer • Lynn Rainville • Alexandra Rasic • A.J. Rhodes • Martin A. Risteen  
Ruby Rogers • Julia Rose • Melanie Roth • Gary Sandling • Evelyn J. Santos • Philip V. Scarpino  
Sally Anne Schmidt • Louise Schubert • David Schutz • Patricia Lyn Scott • Marsha L. Semmel • Sherri Sewall  
Hope Shannon • Ronald L. Siebler • Larissa Smith • Carol Summerfield • Stacey A. Swigart • Susan Tissot  
Robert B. Townsend • Deborah L. Trupin • Louis L. Tucker • Martin Tuohy • Megan van Frank • Carroll Van West  
Elizabeth Wallis • Taylor Watson • Judith A. Wehn • Rose Marie Weisz • Susie Wilkening • Megan Wood  
Lisa E. Worley • William Worthen • Michelle Zacks

# Making History Matter Campaign

In 2025, AASLH concluded year four of a five-year, \$1-million comprehensive campaign to better help history organizations and the people who work in them to thrive as we approach the nation's 250th anniversary.

**The campaign raised more than \$850,000 by the end of 2025.**

Supporting the campaign enables AASLH to help small history organizations and to promote inclusive, whole history. These important goals are the basis of our efforts, growing out of the Semiquincentennial, to amplify the vital role history organizations play in democracy and civic life. We are grateful to the 140 individuals who contributed in 2025! Special thanks to these 2025 major donors:

**Virginia Museum of History and Culture**

**\$100,000 pledge**

**Jenrette Foundation**

**\$25,000 contribution**



**Please donate today** to help AASLH continue Making History Matter.

## AASLH LEGACY SOCIETY MEMBERS

The Legacy Society members listed below have generously decided to include AASLH in their estate planning. If you would like to know more about the AASLH Legacy Society or if you are interested in joining, please contact John Dichtl at [dichtl@aaaslh.org](mailto:dichtl@aaaslh.org).

- |                                      |                                  |
|--------------------------------------|----------------------------------|
| Ms. Sylvia Alderson*                 | Ms. Katherine Kane               |
| Mr. Bob & Ms. Candy Beatty           | Mr. Dennis A. O'Toole            |
| Ms. Melissa Bingmann                 | Ms. Ruby Rogers                  |
| Mr. Robert M. & Ms. Claudia H. Brown | Mr. David J. Russo               |
| Ms. Mary Case & Mr. Will Lowe        | Mr. Will Ticknor                 |
| Mr. Stephen & Ms. Diane Elliott      | Mr. Max and Ms. Mary van Balgooy |
| Mr. John Frisbee*                    | Mr. Jim* and Ms. Janet Vaughan   |
| Mr. J. Kevin Graffagnino             | Mr. George L. Vogt               |
| Mr. John A. Herbst                   | Anonymous                        |
| Mr. H.G. Jones*                      |                                  |

\*Deceased

# THANK YOU DONORS

## Annual Fund

Over \$5,000	\$1,000–\$1,999	\$500–\$999	\$250–\$499
Sandra Clark	Alfred E. Mann Charities, Inc. Erin A. Carlson Mast Christy Coleman John Dichtl Sarah Jencks Katherine D. Kane and John Kelsey Vicky L. Kruckeberg and Carl R. Nold Dennis A. O'Toole Jean M. Svadlenak	Steve Boyd-Smith Kim A. Fortney W. Todd Groce Mary F. Jenkins Burt Logan Nicola Longford Susan E. Miner Ruby Rogers Pattie Smith Sarah W. Sutton George L. Vogt	Paul "Trip" N. Anderson Chuck Arning Melissa R. Bingmann Charan Devereaux Barbara Moore James Pepper Henry Jennifer Saunders Scott L. Wands
\$2,500–\$4,999			
Lisa Y. Lee			

\$100–\$249			
Anne W. Ackerson Timothy J. Chester Dante M. Centuori Stephen S. Elliott Lisa Eriksen Benjamin Filene Susan Finkel James B. Gardner Linnea M. Grim	Bethany Hawkins Tamara L. Hemmerlein Barbara J. Howe John C. Holtzapple Mark Hofer Terry Jackson Margaret Koch Kimberly Kronwall Janice B. Klein	Alice Knierim Jennifer S. Landry Thomas Lewis Larry Landis John G. Marks Robert B. McEwen Virginia Paganelli Caruso Gale E. Peterson Bill Peterson	Melissa Prycer Rey Regenstreif-Harms Stanley A. Ransom Kathie A. Schey Ryan J. Spencer Samuel Stephens Deborah L. Trupin J. Eric Taylor Amy Vandegrift

Up to \$99			
Elizabeth W. Adams Dorothy C. Africa African American Museum of Southern Arizona Alexandria Historical and Genealogical Library and Museum Scott Alvey Tracy Baetz Tamara Biggs Blacks of the Chesapeake Foundation, Inc. Minnette Boesel Laura Botts Andrew Bowen Linda Brownlee Pearson Bill S. Bryans Nathan Buchanan Alan Burley Samonia Byford George W. Bain Dan Barron Stephen Bartkus Bear Wallow Books Beaufort History Museum Nancy Bell John Benge Janna Bennett J. Kent Calder	City of Centerville: Whitaker Museum Madeline Cole Rebecca Conard Mary Condon Laura Cone Jonathan Coopersmith Sandra Campbell David S. Carment Carolina Museum of the Marine Mari Carpenter Paul Carr Ricardo Chavez Gail Christiancy Churchill County Museum Mark Davidson Michael Duchemin Terry L. Davis David De Leon Alphonse DeSena Glenn Dives William Dore Jessica Dorman Raymond Doswell Timothy Draper East Hillsborough Historical Society Eisterhold Associates, Inc.	Elizabethtown Preservation Associates: Winters Heritage House Museum Curtis Ellison Deborah Emmons-Andarawis Karen Fisk Cheryl Fox Barbara A. Franco Damon Freeman Theresa Gamble George Garner Christopher Godbold Dean Goldfein Allan B. Goodrich Stuart Grigg Charlotte Gwin Donna Halper Historic Washington Foundation Benjamin J. Hruska Debra K. Hughes Maryl Kacir Huntington Cheryl Hargrove Nicole Harvey Havre de Grace Decoy Museum, Inc. Cynthia Hedrick Day Kara Heitz Emily Hermans	Nina Herzog Lisa Hirschfield Indiana University: Eskenazi School of Art- Sage Collection Tramia Jackson Ivan Jurin Christopher Kemmerer Todd Kleismit Thomas K. Krasean Nancy Krueger Anne Lackey Lake Erie Islands Historical Society Joan M. Lawson Maria Q. Leiby Lemay Community Historical Society Barbara Little Kat Lloyd Amy Loch Veronica Makowsky Pamela McGuire Susan M. McLeod Kate Merrick Betsy Millard Randall Miller Martin V. Minner Brenda Monahan Alison Moore

# Annual Fund

continued

Up to \$99			
Cecelia Moore Verlyn Mueller Andrea Malcomb Museum of Madeiran Heritage Kaye Myers Dennis Mar Thomas A. Mason Leslie Masson Anne C. McCudden George H. McDaniel Jean McGavin Thomas C. McGowan Cindy Nagel New Jersey Fire Museum Aaron Noble Norfolk Historical Society Aurora A. Northgraves Northport Historical Society Nova Scotia Museum Oregon Area Historical Society & Museum	Paul Orselli Pan Am Museum Foundation: Cradle of Aviation Museum Lori Parker Marilyn Parrish Pigeon-Tech Plainfield Township Historical Commission Heather Quist Rancho Los Alamitos Martin A. Risteen Debra Roussopoulos Elizabeth Russell John Russick Susan Redman-Rengstorf Robert Reeder Tom Reger Debra A. Reid Rex Martin NIBCO Interactive Museum A.J. Rhodes Erin Richardson	Richland County Historical Society: Oak Hill Cottage Karen Sawyer Thomas A. Scott Susan P. Schrieber Patricia Lyn Scott Phil Sexton Beverly K. Sheppard Patricia Shymanski Shiloh Museum of Ozark History Kelli Shapiro Christine Simek Barbara Skryja Angela J. Smith Somerville Museum Sons of the Revolution in the State of New York: Fraunces Tavern Museum Megan Spainhour Rodger E. Stroup	St. Marys Submarine Museum Hayes Strader James Sturgill Kathleen Swann Telluride Historical Museum Tovrea Carraro Society Trempealeau Community Heritage Society Inc. Joanna Torow Tile Heritage Foundation Kurt Updegraff Christie Weininger Susan West Montgomery Wabash County Historical Museum Camille Williams Reginald White Stephanie Walsh Waterville Valley Historical Society Bryan Whitledge

History Leadership Institute Scholarship Fund	Small Museums Scholarship Fund		Donations Given in Honor or in Memory of
<b>Up to \$250</b> Barbara J. Howe Martha M. Shannon	<b>\$500</b> Janice B. Klein	<b>Up to \$499</b> Pierce Dyne Brian Failing	<b>Cinnamon Catlin-Legutko Memorial Fund</b> Brian Crockett Dr. John Dichtl Barbara and John Fero Dr. John Fleming Dorethea "Charlie" Gholson Mary Kronwall Jean Mangum James Vaughan



# Making History Matter

## Up to \$99

<p>Doug Alves Elizabeth W. Adams Paul "Trip" N. Anderson Scott Alvey Terry C. Abrams Angie Albright Andrew Bowen Bill S. Bryans Blacks of the Chesapeake Foundation, Inc. Buffalo Soldiers Museum George W. Bain Laura Botts Samonia Byford Sean Blinn Janna Bennett Alicia C. Batko Becky Cornett Carolyn Crouch City of Centerville: Whitaker Museum Claire Cocciole David S. Carment Debra Couture Gail Christiancy</p>	<p>Kristen Chambers Nolan M. Cool Laura Cone Madeline Cole Paul Carr Michael DiMaggio Alexandra Deselms Curtis Ellison East Hillsborough Historical Society Conny C. Graft Dean Goldfein Emily Greenwald Grady County Historical Society James B. Gardner Janet Gallimore Alan Hoff Cynthia Hedrick Day Mark Howell Maryl Kacir Huntington Margaret Koch Barbara Little Frank Leone Joan M. Lawson</p>	<p>Lemay Community Historical Society Rena Lawrence Anne Miller Betsy Millard Deborah K. Morgan Douglass W. McDonald Gusta McMorrow Leslie Masson Museum Muse LLC Cindy Nagel Susan R. Near Aurora A. Northgraves Marilyn Parrish Pan Am Museum Foundation: Cradle of Aviation Museum Michele Phillips Heather Quist Susan Redman-Rengstorf Debra A. Reid Debra Roussopoulos Mark Rice A.J. Rhodes Rey Regenstreif-Harms Angela J. Smith Christine Senese</p>	<p>Leishawn Spotted Bear Ryan J. Spencer Smith's Castle Somerville Museum Sons of the Revolution in the State of New York: Fraunces Tavern Museum Susan P. Schrieber St. Marys Submarine Museum Phil Sexton Siena College's McCormick Center for the Study of the American Revolution Kelli Shapiro Karen Sawyer Telluride Historical Museum Tovrea Carraro Society Gina Vergara-Bautista Bryan Whitledge Robert T. Williams Scott L. Wands Suzanne Whallon Wabash County Historical Museum Lisa E. Worley Lindsey Weaver</p>
--	--	---	---

## \$100–\$50,000

<p><b>\$50,000</b> Virginia Museum of History &amp; Culture</p> <p><b>\$25,000–\$49,999</b> Richard Hampton Jenrette Foundation</p> <p><b>\$10,000–\$24,999</b> Vicky L. Kruckeberg and Carl R. Nold</p> <p><b>\$5,000–\$9,999</b> Sandra S. Clark Katherine D. Kane and John Kelsey Andrea Lowery Michael H. Staenberg</p>	<p><b>\$2,500–\$4,999</b> Barbara A. Franco Richard M. Josey Tom Pfannenstiel Donna K. Sack</p> <p><b>\$1,500–\$2,499</b> Norman and Sandra Burns Douglas E. Evelyn Mary &amp; Max van Balgooy P. Nina Zannieri</p> <p><b>\$1,000–\$1,499</b> M. Susan Barger Michelle Banks Christy Coleman John Dichtl John W. Durel Ben Garcia Lisa Y. Lee Ruby Rogers Kenneth C. Turino</p>	<p><b>\$500–\$999</b> Steve Boyd-Smith Creigh Family Foundation Lawrence Catlin-Legutko Rowena and Kevin Dasch Daniel Feller Karen M. Goering Stuart Grigg Marsha L. Semmel Tobi M. Voigt</p> <p><b>\$250–\$499</b> Alison Bruesehoff Minnette Boesel Karen Daly Thomas and Lynn Dotson Stephen Elliott Maria Q. Leiby Shae A. Nawoj</p>	<p><b>\$100–\$249</b> Frederick J. Augustyn Jacqui Ainlay-Conley Patricia Cullinan Kim A. Fortney Jennifer Huebscher Tamara L. Hemmerlein Anne Lackey Gale E. Peterson Nathan Richie Alexandra Rasic Judith Robins Martha M. Shannon Deborah L. Trupin Christie Weininger Susan B. Wageman</p>
---	---	--	--

Thank you for your continued support!

## Council Officers

As of December 2025



**Christy Coleman\***  
Chair  
Jamestown-Yorktown  
Foundation  
Williamsburg, VA



**Erin Carlson Mast\***  
Vice Chair  
Lincoln Presidential  
Foundation  
Springfield, IL



**Burt Logan\***  
Immediate Past Chair  
Carmichael, CA



**Scott Wands\***  
Secretary  
Connecticut Humanities  
Hartford, CT



**Christie Weininger\***  
Treasurer  
Hayes Presidential Library  
and Museums  
Fremont, OH

\* AASLH Executive Committee

## Council Members

As of December 2025

**Lisa Anderson**  
Class of 2026  
National Baseball Hall of  
Fame and Museum  
Cooperstown, NY

**JerriAnne Boggis**  
Class of 2026  
Black Heritage Trail of New  
Hampshire  
Portsmouth, NH

**Alison Bruesehoff**  
Class of 2026  
Rancho Los Cerritos  
Long Beach, CA

**Lisa Yun Lee**  
Class of 2026  
National Public Housing  
Museum

**Kim Fortney\***  
Class of 2027  
National History Day  
College Park, MD

**Veronica Gallardo**  
Class of 2027  
Surratt House Museum  
Clinton, MD

**Margaret Koch**  
Class of 2027  
Bullock Texas State History  
Museum  
Austin, TX

**Andrea Lowery\***  
Class of 2027  
Pennsylvania Historical  
and Museum Commission  
Harrisburg, PA

**Jamie Bosket**  
Class of 2028  
Virginia Museum of History  
and Culture  
Richmond, VA

**James Pepper Henry\***  
Class of 2028  
Kaw Nation / Kanza  
Heritage Society  
Kaw City, OK

**Ashley Jordan**  
Class of 2028  
African American Museum  
of Philadelphia  
Philadelphia, PA

**Chieko Phillips**  
Class of 2028  
4Culture  
Seattle, WA

**Scott Alvey**  
Class of 2028  
Kentucky Historical Society  
Frankfort, KY

**Karen Fisk**  
Class of 2029  
Stowe Center for Literary  
Activism  
Hartford, CT

**Ben Garcia**  
Class of 2029  
The American LGBTQ+  
Museum  
New York, NY

**Tamara Hemmerlein**  
Class of 2029  
Indiana Historical Society  
Indianapolis, IN



## AASLH Has a New Home

In September, AASLH relocated its headquarters in Nashville, Tennessee. After nine years at Convent Place, near Vanderbilt University, we moved to new offices at the BNA Corporate Center, 404 BNA Drive, just west of the Nashville International Airport. Almost half of our staff members now work remotely from other states: Connecticut, Iowa, Maryland, New Jersey, and Virginia. Come visit us if you're ever in Nashville!

**AASLH** | 404 BNA Drive, Suite 105 | Nashville, TN 37217

## AASLH Staff

**Matt Arthur**  
Professional Development Manager

**Aja Bain**  
Director, Professional Development and  
Publications

**John Dichtl**  
President and CEO

**Bethany Hawkins**  
Executive Vice President and Chief  
Operating Officer

**John Garrison Marks**  
Vice President, Research and Engagement

**Rebecca Mendez**  
Professional Development Manager

**Eric Morse**  
Director, Marketing and Membership

**Rey Regenstreif-Harms**  
Senior Manager, Membership Data and  
Development

**Madeleine Rosenberg**  
Director, Research and Strategic Initiatives  
*This position is made possible with support  
from the William G. Pomeroy Foundation*

**Becky Schoenbachler**  
Professional Development Coordinator

**Megan Spainhour**  
Office and Membership Coordinator

**Felicia Sudmeier**  
Development and Marketing Coordinator

# Statement of Financial Position

FY 2024 Audited Statements Year Ending June 30, 2025

## CURRENT ASSETS

	2025	2024
Cash and cash equivalents	\$739,022	\$647,607
Restricted cash	\$127,977	\$18,264
Accounts receivable	\$2,200	\$94,653
Other assets	\$128,743	\$118,708
<b>Total current assets</b>	<b>\$997,942</b>	<b>\$879,232</b>
Property and equipment	\$4,036	\$3,905
Right-of-Use assets	\$13,350	\$62,895
Investments, substantially restricted	\$2,674,391	\$2,560,957
<b>Total assets</b>	<b>\$3,689,719</b>	<b>\$3,506,989</b>

## LIABILITIES AND NET ASSETS

Current liabilities	2025	2024
Accounts payable	\$224,319	\$218,025
Unearned membership dues	\$401,130	\$395,516
Unearned revenue	\$290,555	\$223,987
Current portion of operating lease liability	\$13,350	\$49,545
<b>Total current liabilities</b>	<b>\$929,354</b>	<b>\$887,073</b>
Long-term operating lease liability	\$0	\$13,350
<b>Total liabilities</b>	<b>\$929,354</b>	<b>\$900,423</b>
<b>Net assets</b>		
Without donor restrictions	(\$76,994)	(\$107,054)
With donor restrictions	\$2,837,359	\$2,713,620
<b>Total net assets</b>	<b>\$2,270,365</b>	<b>\$2,606,566</b>
<b>Total liabilities and net assets</b>	<b>\$3,689,719</b>	<b>\$3,506,989</b>

## STATEMENT OF ACTIVITIES

Revenues, gains, and other support	Without Donor Restrictions	With Donor Restrictions	Total
<b>Total revenues, gains, and other support</b>	<b>\$2,100,886</b>	<b>\$123,739</b>	<b>\$2,224,625</b>
Operating expenses	\$598,118	\$0	\$598,118
Supporting services	\$1,472,708	\$0	\$1,472,708
<b>Total operating expenses</b>	<b>\$2,070,826</b>		<b>\$2,070,826</b>
Change in net assets from operations	\$30,060	\$123,739	\$153,799
Net assets, beginning of year	(\$107,054)	\$2,713,620	\$2,606,566
<b>Net assets, year-end</b>	<b>(\$76,994)</b>	<b>\$2,837,359</b>	<b>\$2,760,365</b>
<b>Statement of cash flow</b>	<b>FY2025</b>	<b>FY2024</b>	
Net increase (decrease) in cash and cash equivalents	\$201,128	\$48,909	
Cash and cash equivalents, beginning of year	\$665,871	\$776,786	
<b>Total</b>	<b>\$866,999</b>	<b>\$825,695</b>	