

# 2025 QUAKE TECHNICAL MANUAL



# 2025 QUAKE TECHNICAL MANUAL

---

## CONTENTS

- 2 IMPORTANT INFO
- 3 ONE BIKE, MANY OPTIONS
- 4 CHANGING THE REAR WHEEL SIZE
- 5 ADJUSTING THE BOTTOM BRACKET HEIGHT
- 6 CHANGING FORK OR FRONT WHEEL SIZE
- 7 CABLE ROUTING DIAGRAM
- 8/9 FRAME TECHNICAL SPECIFICATIONS

# 2025 QUAKE TECHNICAL MANUAL

---

## IMPORTANT INFORMATION

This document is intended to supplement the complete owner's manual. This document contains an overview of some parts diagrams, specifications, and adjustment instructions. This document is NOT a complete owner's manual and does not include important safety and installation information. You must refer to the complete owner's manual and get help from your official Marin dealer with assembly, use, service, and maintenance. Visit [marinbikes.com/support](https://marinbikes.com/support) for more information.

Failure to follow proper assembly instructions, hazard warnings, and compatible part recommendations may result in loss of control while riding and can lead to serious injury and/or death. We recommend having your bike assembled, adjusted, and serviced by a trained, professional bicycle mechanic. This manual is not intended to replace the assembly and service instructions provided by third-party component manufacturers.

# 2025 QUAKE TECHNICAL MANUAL

## ONE BIKE, MANY OPTIONS

The Marin Quake is a downhill/parkbike that is ready for anything. It is designed to be adjustable to perfectly match the riding style and preferences of the rider. Here is a breakdown of what can be changed.

| COMPONENT             | OPTIONS                             | NO PURCHASE NEEDED | AFTERMARKET PARTS NEEDED |
|-----------------------|-------------------------------------|--------------------|--------------------------|
| BB Height & CS Length | High BB/Short CS or Low BB/Short CS | ×                  |                          |
| Rear Wheel Size       | 29" Rear Wheel                      |                    | ×                        |
|                       | 27.5" Rear Wheel                    | ×                  |                          |
| Front Wheel Size      | 29" Front Wheel                     | ×                  |                          |
|                       | 27.5" Front Wheel                   |                    | ×                        |

### ADDITIONAL INFORMATION

Adjust via flip-chips on bike to change rear wheel size and chainstay length/BB height

Headset, fork, and wheel need to be purchased separately. For 27.5" front wheel an external lower headset cup is required

Complete bike ships with 27.5" rear wheel, 29" wheel needs purchased aftermarket

# 2025 QUAKE TECHNICAL MANUAL

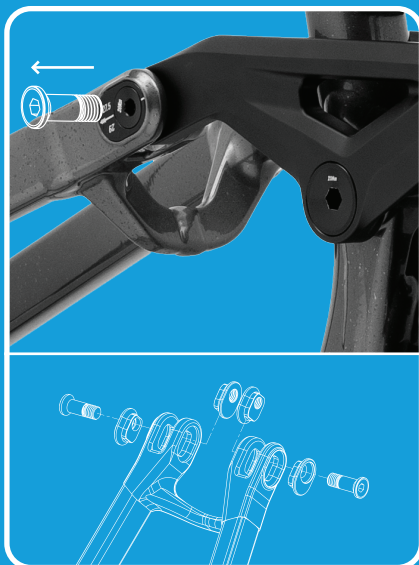
## CHANGING THE REAR WHEEL SIZE

### ADJUST YOUR REAR WHEEL

STOCK SETTING IS 27.5"  
TO CHANGE REAR WHEEL SIZE:

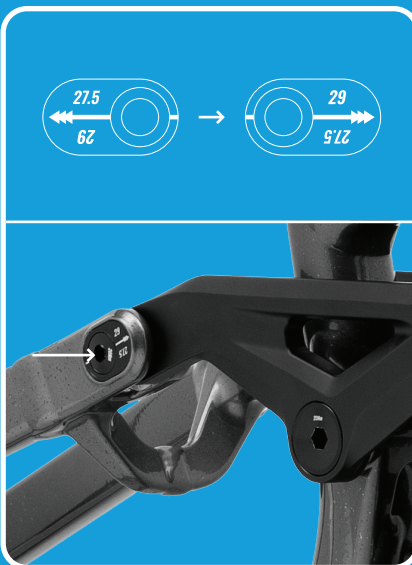
#### STEP 1

Use 6mm Allen key and remove bolts on left and right side of the seatstay/rocker link



#### STEP 2

Rotate flip chips 180 degrees, then reinstall the pivot bolt. Torque bolts to 20Nm



#### STEP 3

The 29" laser etching will be right side up & the frame is ready to accept a 29" rear wheel



**\*\*disclaimer - bike does not include a 29" rear wheel; parts must be purchased separately**

# 2025 QUAKE TECHNICAL MANUAL

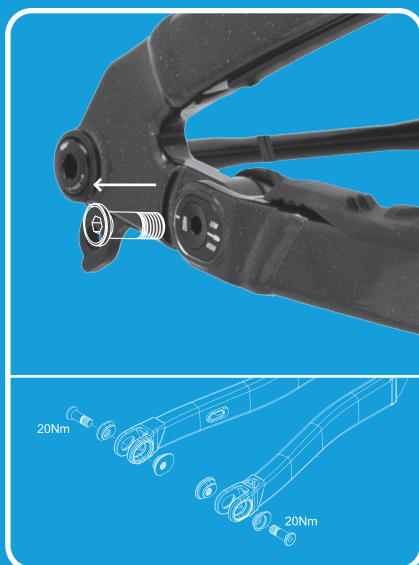
## ADJUSTING THE BOTTOM BRACKET HEIGHT

### \*NO ADDITIONAL PART REQUIRED

STOCK SETTING IS LOW BOTTOM BRACKET & LONG CHAINSTAY TO CHANGE SETTINGS:

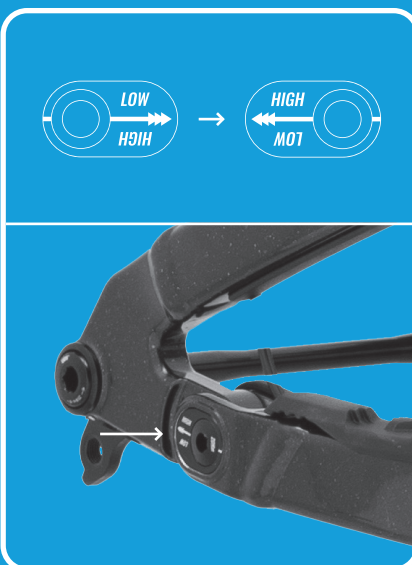
#### STEP 1

Use 6mm Allen key and remove bolts on left and right chainstay rear pivot



#### STEP 2

Rotate flip chips 180 degrees, then re-install the pivot bolt. Torque bolts to 20Nm



#### STEP 3

The HIGH call out will be right side up, now bike is in the high BB/short CS position



# 2025 QUAKE TECHNICAL MANUAL

## CHANGING FORK OR FRONT WHEEL SIZE

The Marin Quake can be used with either a dual crown (up to 200mm travel) or single crown fork (180-190mm travel). Based on your desired configuration some parts may need to be purchased from one of many aftermarket companies, such as Fox, RockShox, and FSA.

| TO CHANGE   | SET-UP REQUIRED                  | HOW   |
|-------------|----------------------------------|---|
| Front Wheel | 27.5" Front Wheel                | 10 - 15mm external lower headset cup required   |
|             | 29" Front Wheel                  | Complete bike ships with 29" front wheel  |
| Fork        | Single Crown or Dual Crown 29"   | Upper Cup, ZS56mm for 1.125" bearing (which is stock OE set up)<br>ZS56 cup for 1.5" Bearing (must be purchased seperately) |
|             | Single Crown or Dual Crown 27.5" | Upper Cup, ZS56mm for 1.125" bearing (which is stock OE set up)<br>ZS56 cup for 1.5" Bearing (must be purchased seperately) |

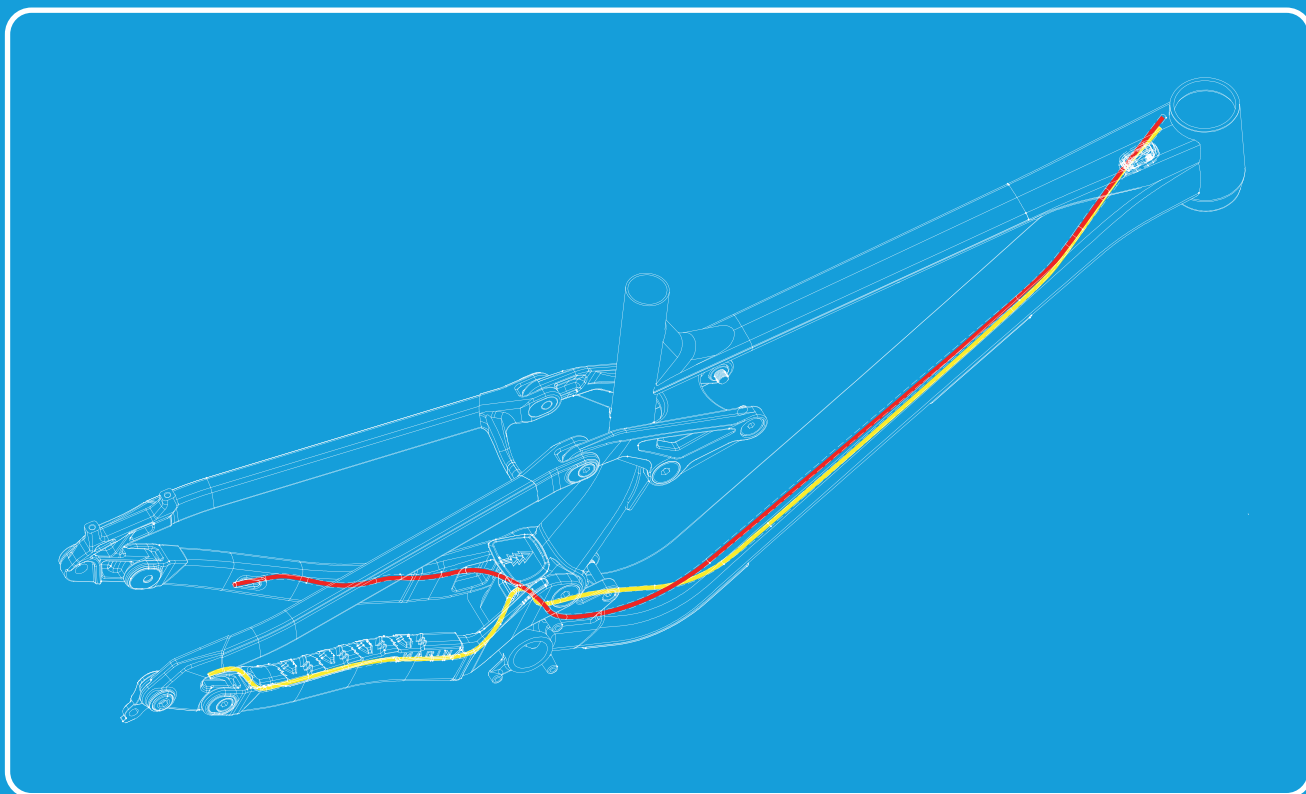
# 2025 QUAKE TECHNICAL MANUAL

---

## CABLE ROUTING DIAGRAM

### INTERNAL CABLE ROUTING

- REAR BRAKE
- REAR DERAILLEUR





# 2025 QUAKE TECHNICAL MANUAL

## FRAME TECHNICAL SPECS

### FORK AXLE TO CROWN

|  |                         |
|--|-------------------------|
| OE SPEC - 29"  | 605mm                   |
| 27.5"  | 587mm                   |
| IMPORTANT: 27.5" FORK REQUIRES 10-15mm EXTERNAL LOWER HS CUP |                         |
| FORK   | Dual or Single Crown OK |

### SHOCK INFO

|        |     |
|--------|-----|
| E2E    | 225 |
| Stroke | 75  |

### SHOCK HARDWARE

|       |          |
|-------|----------|
| Upper | Trunnion |
| Lower | 30xM8    |

### REAR WHEEL TRAVEL

180mm

### TIRE COMPATIBILITY

|       |                            |
|-------|----------------------------|
| Front | 29x2.6"                    |
| Rear  | 2.6" (27.5" -stock or 29") |

### HEADSET DIM

|        |  |
|--------|--|
| Top    | Zero Stack 56 (ZS56mm)<br>top and bottom |
| Bottom |  |

### SEATPOST DIAMETER

34.9mm

### CHAINLINE

56mm

### SEAT COLLAR DIAMETER

38.9mm

### REAR BRAKE MOUNT

Post Mount 180mm

### REAR AXLE

148x12mm

### BB SHELL WIDTH

83mm

### BEARING SPEC

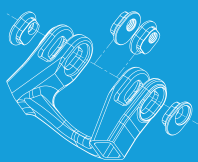
|      |         |   |
|------|---------|---|
| 6902 | 15x28x7 | 4 |
| 6802 | 15x24x5 | 4 |
| 6802 | 15x24x7 | 2 |
| 6901 | 12x24x6 | 2 |

### REAM DEPTH

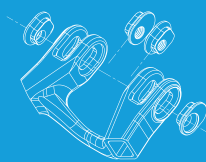
|   |       |
|---|-------|
| S | 160mm |
| M | 180mm |
| L | 200mm |

# 2025 QUAKE TECHNICAL MANUAL

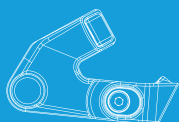
## FRAME TECHNICAL SPECS



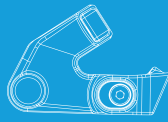
Setting Flip Chip For wheel 27.5"  
(Set Up For Assembly)



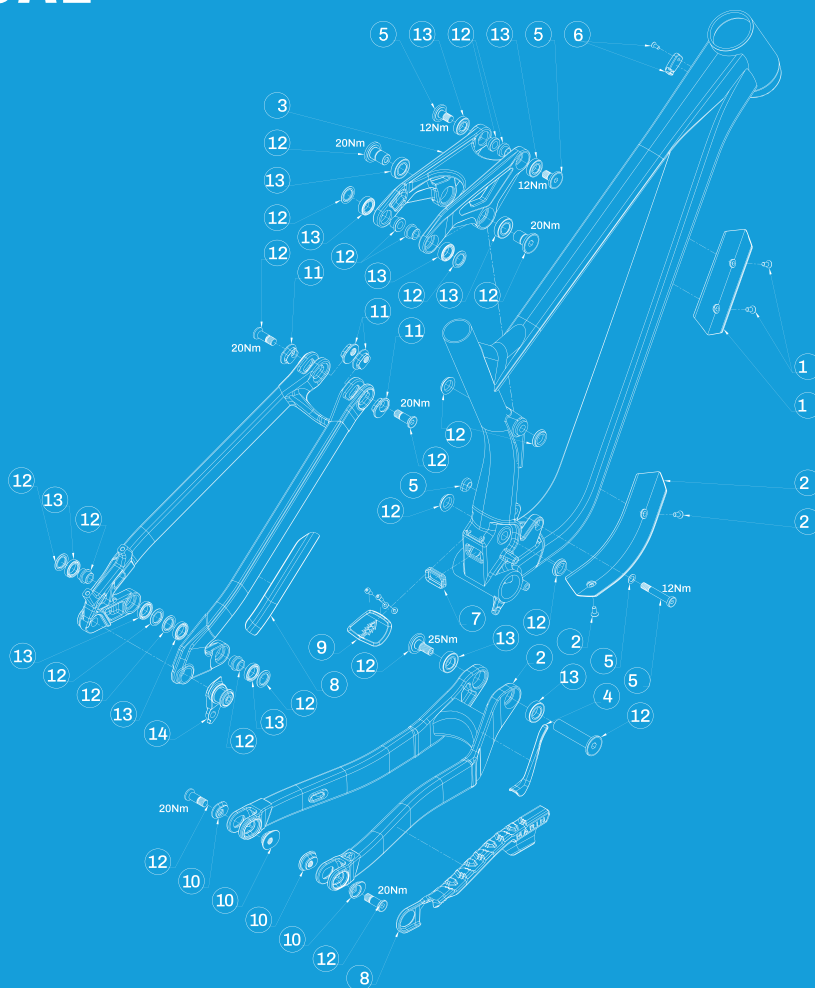
Setting Flip Chip For wheel 29"



Setting Flip Chip For Long CS  
(Set Up For Assembly)



Setting Flip Chip For Short CS



| Item # | Article Code | Description                                     | Item # | Article Code            | Description                      |
|--------|--------------|---|--------|-------------------------|----------------------------------|
| 1      | 739725       | Shuttle Guard, Quake                            | 8      | 738403                  | CS & SS Protector                |
| 2      | 739728       | DT Protector, Quake                             | 9      | 738406                  | CS Yoke Bolt-On Flap, with Bolts |
| 3      | 740219       | Rocker Link, Quake                              | 10     | 738245                  | CS Flip Chip Assembly            |
| 4      | 740220       | CS Yoke Cover, Stick-On, Quake                  | 11     | 738246                  | SS/Rocker Flip Chip Assembly     |
| 5      | 740221       | Shock Bolt Kit K                                | 12     | 738242                  | Pivot Bolt Kit I                 |
| 6      | 738410       | Series 3 Cable Grommet Kit, Both Sides, w/Bolts | 13     | 738244                  | Bearing Kit F                    |
| 7      | 739317       | Cable Grommet for FT Exit Hole                  | 14     | Sram PN: AC-DRHG-MTB-A1 | Sram UDH                         |