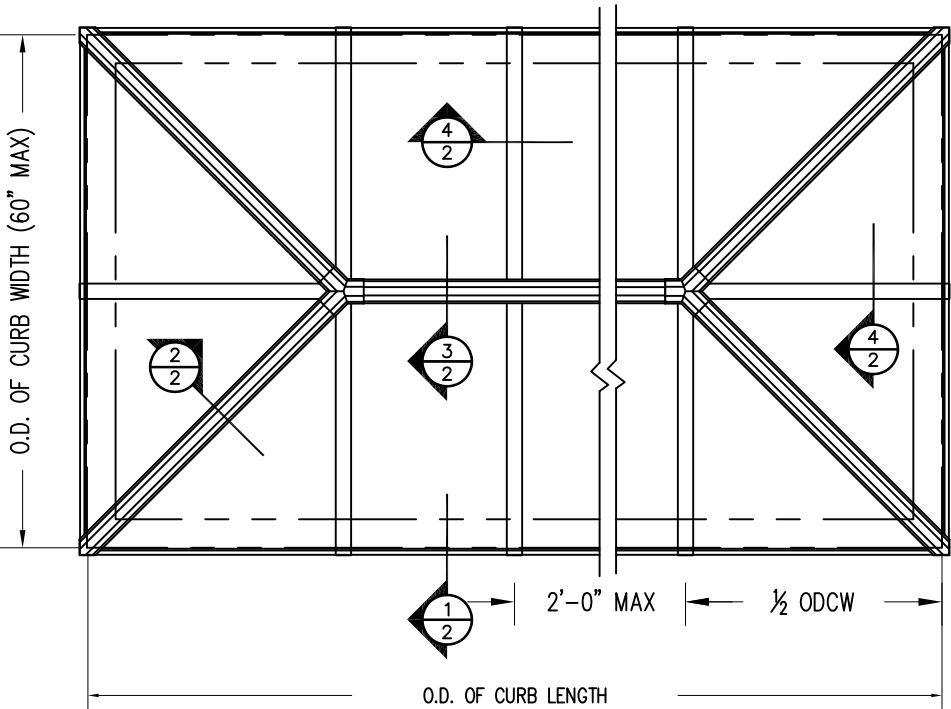
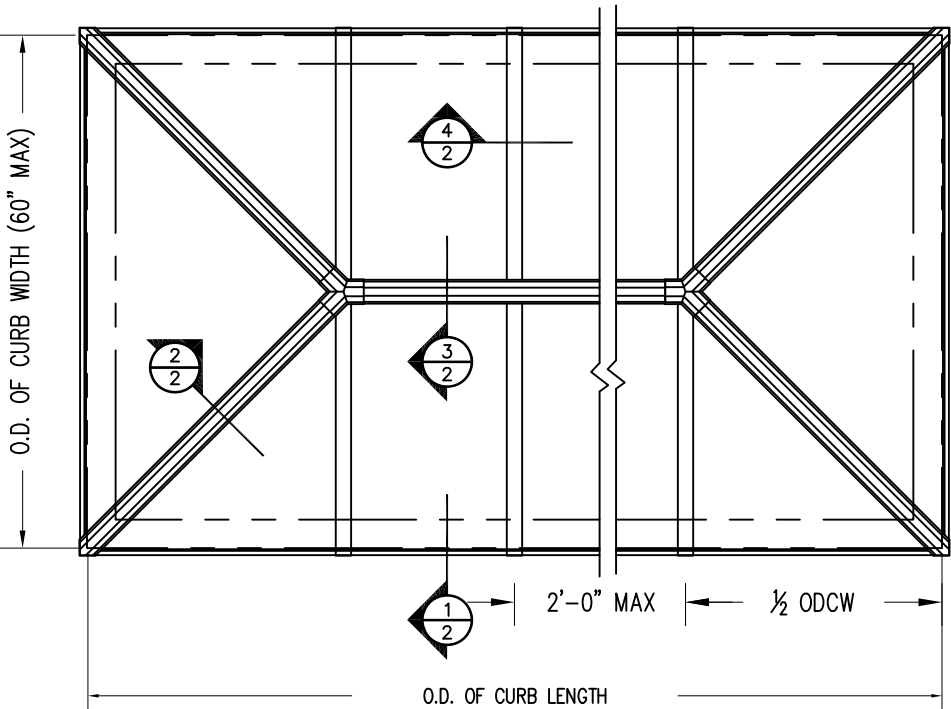


PLAN A



PLAN B



DATE: 1/2019

CUSTOMER VERIFICATION REQUIRED

"REVIEWED" STAMPS ARE NOT ACCEPTED

UNIT(S) DETAILED ARE AS REQUESTED IN THE BID INVITATION.

THESE DETAILS ACCURATELY REFLECT THE FIELD DIMENSIONS AND CONDITIONS.

AND ARE RELEASED FOR FABRICATION.

☐ APPROVED:

☐ REJECTED:

☐ APPROVED AS NOTED (PER REVIEW BY WASCO):

BY: _____

DATE: _____

PLEASE INITIAL
SUBSEQUENT SHEETS

GENERAL NOTES:

- 1) UNITS ARE AVAILABLE IN 5:12, 7:12 AND 12:12 PITCHES ONLY.
- 2) MAXIMUM AVAILABLE O.D.CURB DIMENSION IS 5'-0".
- 3) SYSTEM DESIGNED FOR 1 1/8" OR 1 1/2" INSULATING GLASS ONLY.
- 4) SKYLIGHTS ARE DESIGNED TO SUPPORT A MINIMUM 40 psf POSITIVE LOAD PLUS ALL DEAD LOADS WITH MAXIMUM DEFLECTION OF L/175.
- 5) UNITS ARE SHIPPED ASSEMBLED AND UNGLAZED UNLESS QUOTED OTHERWISE.
- 6) SUPPORTING CURB CONSTRUCTION MUST BE CAPABLE OF SUPPORTING ALL HORIZONTAL AND VERTICAL LOADS IMPOSED BY THE SKYLIGHT ONTO THE CURB.
- 7) INSTALLATION OF SKYLIGHTS IS BY OTHERS.
- 8) OFF-LOADING OF SKYLIGHTS IS THE RESPONSIBILITY OF THE CUSTOMER.

PLAN	MODEL	OD CURB WIDTH (60" MAX)	OD CURB LENGTH	# BAYS (ALONG LGTH)	PITCH	QUANTITY
A WITH END RAFTER (STANDARD) B NO END RAFTER	CPYH				5:12	
	CPYH				7:12	
	CPYH				12:12	

1-1/16" or 1-1/8" INSULATED GLASS SPECIFICATION

OUTER LAYER		
1/2" SPACE FILL	AIR	ARGON
INNER LAYER		

METAL FINISH		
MILL	LIGHT BRZ ANODIZED	
CLEAR ANODIZE	KYNAR	COLOR _____
DARK BRZ ANODIZE	BAKED ENAMEL	COLOR _____
MED BRZ ANODIZE		

CLASSIC EXTENDED PYRAMID

SALES ORDER #:

PROJECT NAME:

LOCATION:

CUSTOMER:

WASCO REP:

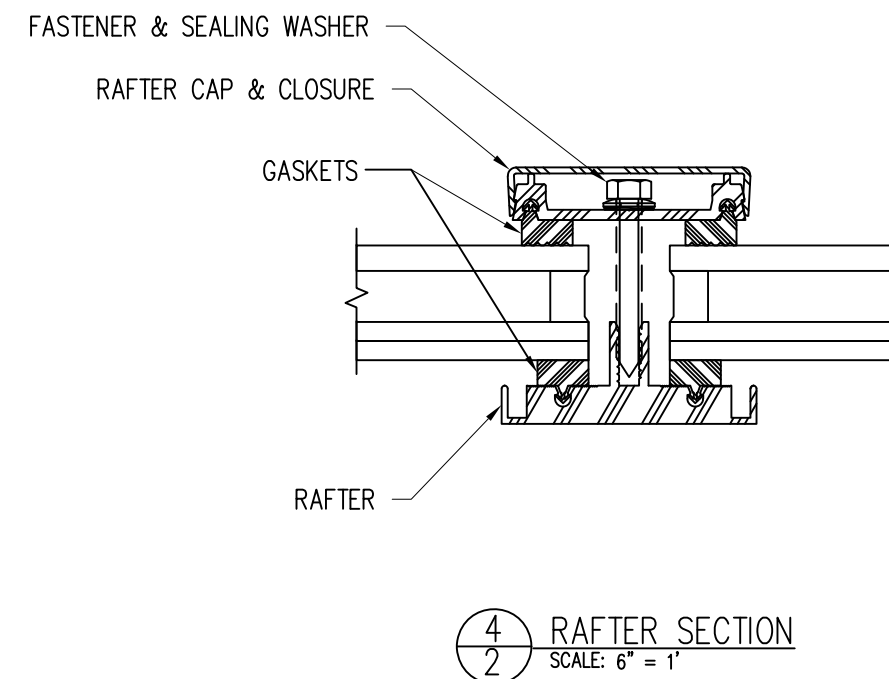
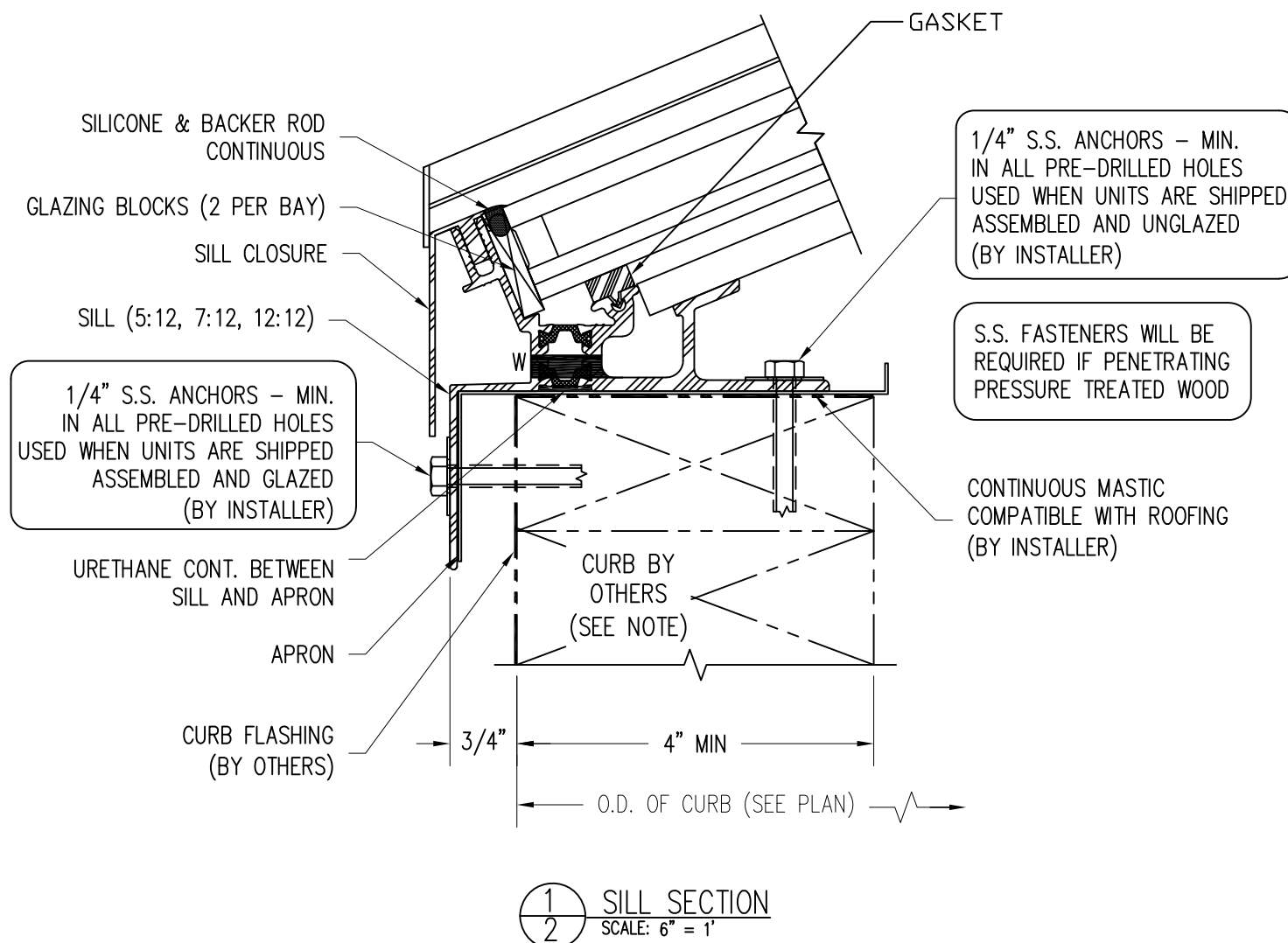
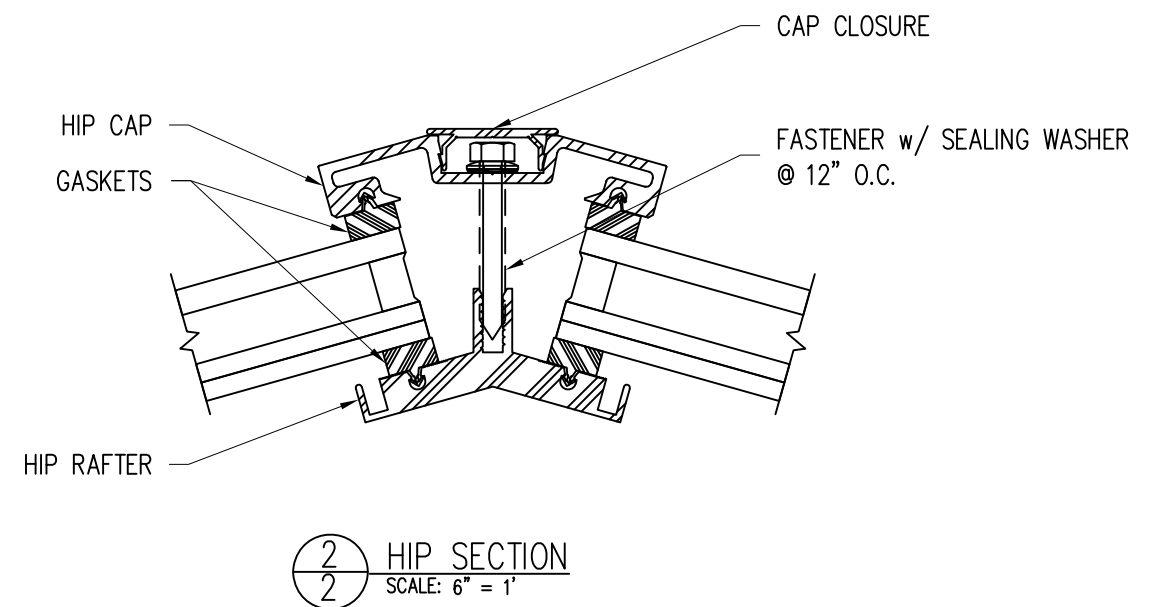
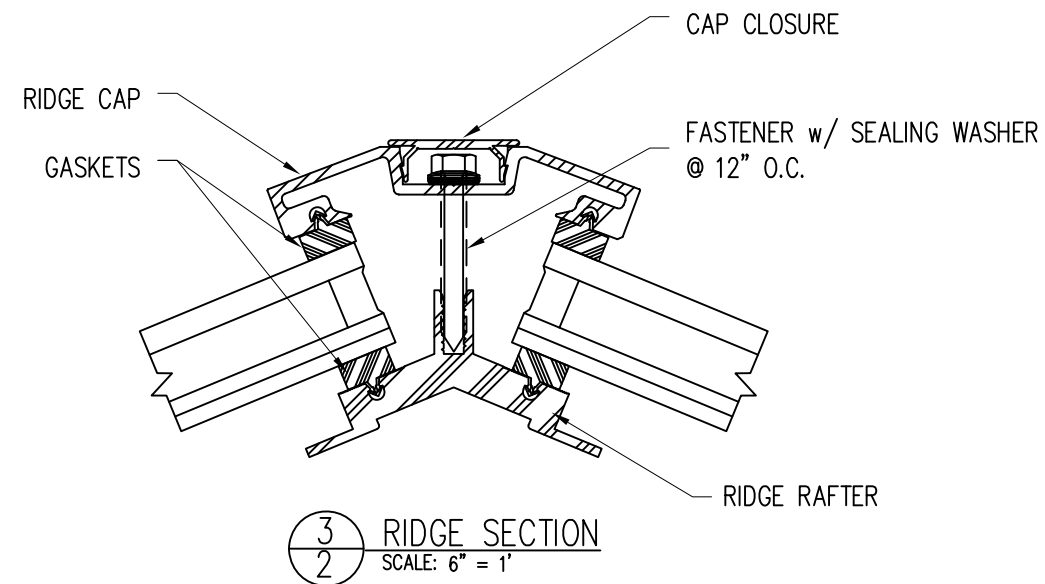
NOTE: THESE DRAWINGS AND THE DESIGNS DEPICTED IN THEM, ARE THE PROPERTY OF VELUX AMERICA, LLC. AND CANNOT BE COPIED OR TRANSMITTED IN ANY FORM WITHOUT THE EXPRESS WRITTEN PERMISSION OF SAME.

SAFETY CONSIDERATIONS: VELUX SKYLIGHTS ARE DESIGNED TO WITHSTAND NORMAL ELEMENTS OF THE WEATHER. THEY ARE NOT DESIGNED TO WITHSTAND HUMAN IMPACT OR FALLING OBJECTS. THESE SKYLIGHTS SHOULD NOT BE WALKED UPON UNDER ANY CIRCUMSTANCES. THE OWNER OR DESIGNER SHOULD RESTRICT ACCESS ONLY TO AUTHORIZED PERSONNEL WHO HAVE BEEN ADEQUATELY CAUTIONED AS TO THE LOCATION OF THE SKYLIGHT AND INFORMED OF THE WARNING ABOVE OR SAID OWNER SHOULD PROVIDE PROTECTIVE GUARDRAILS OR SCREENS AROUND THE SKYLIGHT.



VELUX Wells
85 Spencer Dr, Unit A
Wells, ME 04090
1-800-88-VELUX
veluxusa.com





GENERAL CURB/NAILER NOTE: CURBS/NAILERS SHOWN ARE GENERIC. DESIGN AND FABRICATION OF CURBS/NAILERS IS NOT THE RESPONSIBILITY OF WASCO PRODUCTS. THEY MUST BE ADEQUATE TO RESIST ALL VERTICAL AND HORIZONTAL FORCES THAT MAY BE IMPOSED ON THEM BY THE SKYLIGHT SYSTEM.