

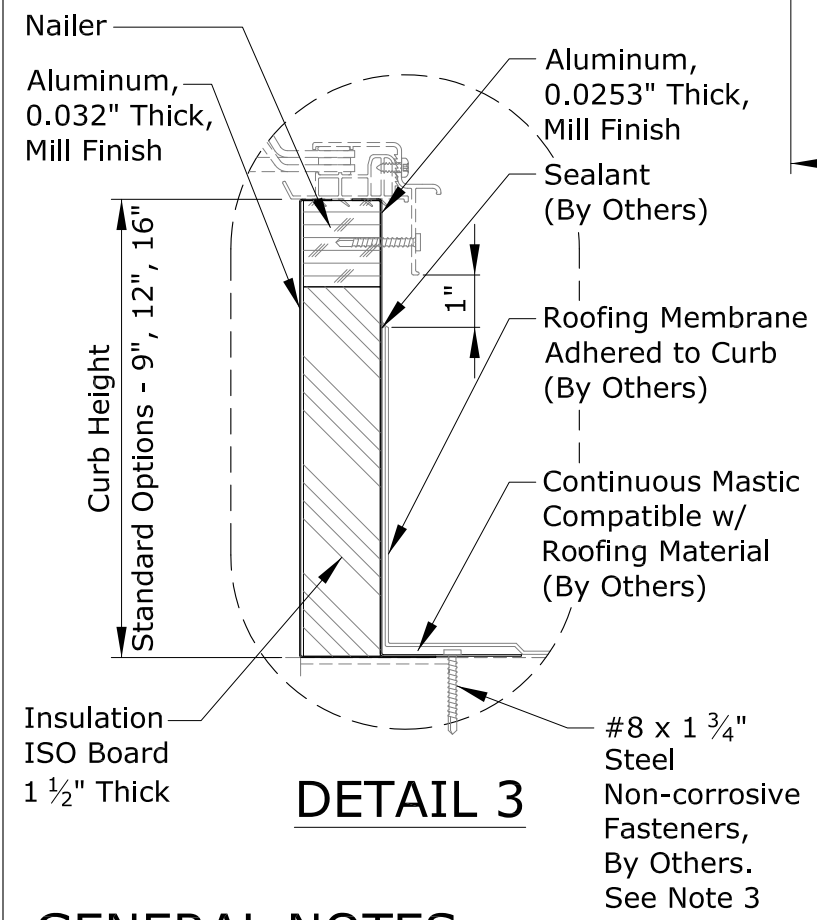
DMT2 Deck Mount Traditional Double Dome Skylight

Traditional Double Dome Options				
Size - Width x Length (using Inside Curb Dimensions)	Quantity	Dome Material*	Dome Description and Designation	
		IMA 0.150 100% IMA over 0.118 50% IMA	Clear Smooth / Prismatic White (S1N2)	Max size 64x116
		LuxGuard Plus 0.150 PC over 0.118 PC	Clear / White Smooth (X1P2)	Max size 68x116
		LuxGuard 0.118 PC over 0.118 PC Or 0.118 Acrylic	Clear PC / White Prismatic PC (P1C2)	Max size 50x113
			Clear PC / White Smooth PC (P1P2)	Max size 68x116
			Clear PC / Clear Smooth PC (P1P1)	Max size 68x116
		Infrared Blocking Acrylic 0.118 over 0.118 Acrylic	Clear PC / Satin Ice Acrylic (P1H1)	Max size 68x94
			Satin Sky 2 / Clear Smooth (E2A1)	Max size 68x116
			Satin Sky 2 / White Smooth (E2A2)	Max size 68x116

*Note: Dome Material thickness is sheet material's thickness prior to the manufacturing process.

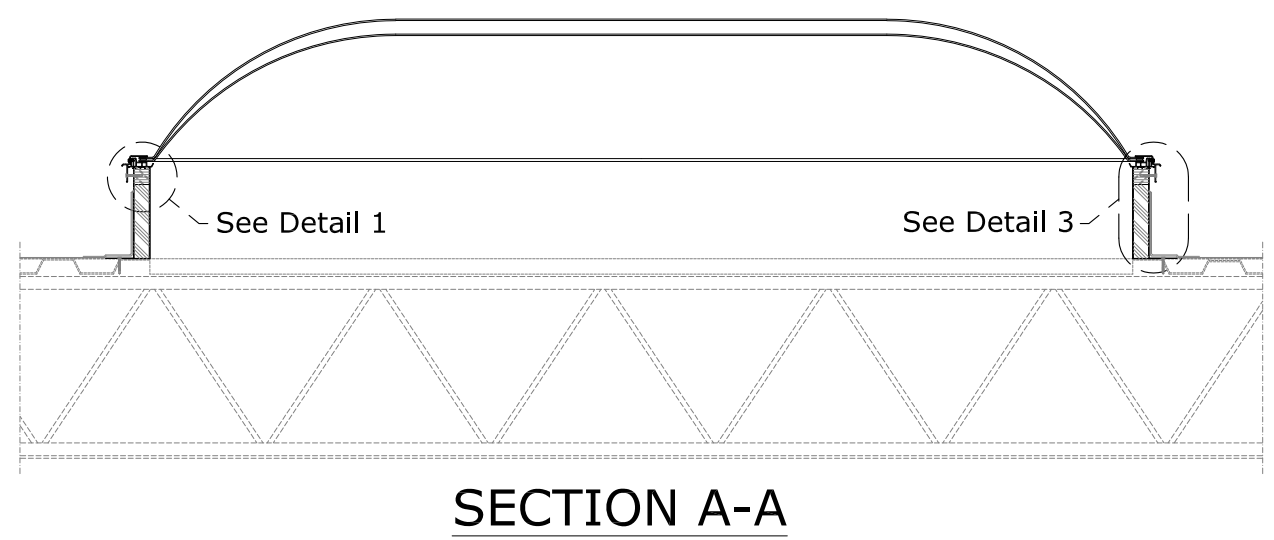
Frame Finish Options	
<input type="checkbox"/> Mill Finish	<input type="checkbox"/> Neutral Gray Powder Coat

Standard Curb Heights		
<input type="checkbox"/> 9"	<input type="checkbox"/> 12"	<input type="checkbox"/> 16"

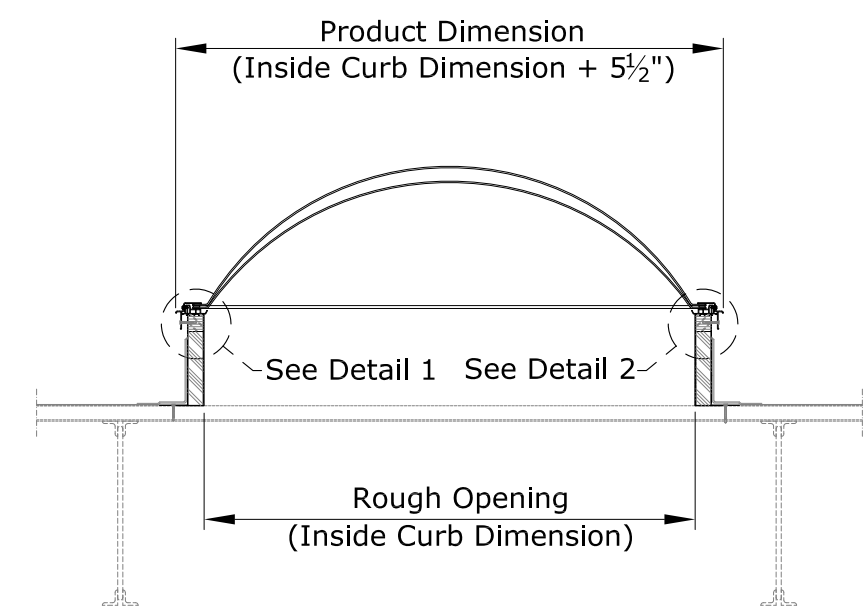


DETAIL 1

DETAIL 2



SECTION A-A



SECTION B-B

GENERAL NOTES

1. This drawing emphasizes the VELUX DMT2 Deck Mount Traditional Double Dome Skylight. It illustrates a general arrangement layout (plus recommendations) for a VELUX DMT2 installation in a 0-60 degree roof pitch application. VELUX DMT2 skylights are shipped on VELUX curb designs.
2. The architectural/structural design and specifications for the inclusion of a commercial skylight, such as the VELUX DMT2 in any roofing/ceiling application is determined and provided by others. The design criteria includes, but is not limited to design loads, structural configurations, structural framing member sizes and material, architectural finishes and integration with the roofing/ceiling systems of the building. VELUX recommends compliance by all designers and installers with all local and industry specific building codes and guidelines. VELUX assumes no responsibility or liability in the design, construction and performance of a building structure by others.
3. The fasteners securing the curb to the rough opening are provided by others. VELUX recommends #8 x 1-3/4" steel non-corrosive fasteners. The fasteners should be placed in the center of the curb flange 4" from each corner and 12" on center for the length and width of the deck mounted skylight.

This drawing is an instrument of service and is provided for informational use only.



Sky-Global Product Management

VELUX
1418 Evans Pond Road
Greenwood, SC 29649
1-800-88-VELUX
www.VELUXUSA.com

DMT2 Deck Mount Traditional Double Dome Skylight