

GENERAL NOTES:

- 1) EXTRUDED ALUMINUM TO BE OF 6063-T5 ALLOY (MINIMUM).
- 2) ALL FASTENERS TO BE 300 SERIES STAINLESS STEEL.
- 3) EXTRUDED ALUMINUM SILLS, RIBS, AND PURLINS TO HAVE A NOMINAL THICKNESS OF .125". EXTRUDED ALUMINUM RETAINERS AND GLAZING CAPS TO HAVE A MINIMUM EFFECTIVE THICKNESS OF .109".
- 4) SKYLIGHTS ARE DESIGNED TO SUPPORT A MINIMUM 40 P.S.F. LIVE LOAD, PLUS ALL DEAD LOADS WITH A MAXIMUM DEFLECTION OF 1/175
- 5) INSTALLATION OF SKYLIGHT(S) – NOT BY WASCO.
- 6) ANY CHANGES THAT OCCUR AFTER APPROVAL OF SKYLIGHT MAY RESULT IN AN ADD TO CONTRACT AND DELAY IN DELIVERY OF SKYLIGHT(S).
- 7) BV UNITS WILL SHIP KD, INSIDE FASTENED, WITH VERTICAL ENDS ASSEMBLED OR COMPLETELY ASSEMBLED, OUTSIDE FASTENED – SPECIFY BELOW.
- 8) OFF-LOADING OF SKYLIGHT OR SKYLIGHT COMPONENTS IS THE RESPONSIBILITY OF THE CUSTOMER
- 9) WASCO RESERVES THE RIGHT TO MAKE CHANGES WITHOUT NOTICE WHEN, IN THE OPINION OF THE COMPANY, SUCH CHANGES IMPROVE THE PRODUCT OR IT’S PERFORMANCE.

MODEL	OD CURB WIDTH (123" MAX)	OD CURB LENGTH	QTY	ASSEMBLED & GLAZED or KNOCKED DOWN
TBVV_LA				
TBVV_LA				
TBVV_LA				

OUTER GLAZING MATERIAL	INNER GLAZING MATERIAL	CLEAR MULTIWALL W/ LUMIRA AEROGEL
ACRYLIC	ACRYLIC	16MM
IMPACT MODIFIED ACRYLIC	IMPACT MODIFIED ACRYLIC	
POLYCARBONATE	POLYCARBONATE	

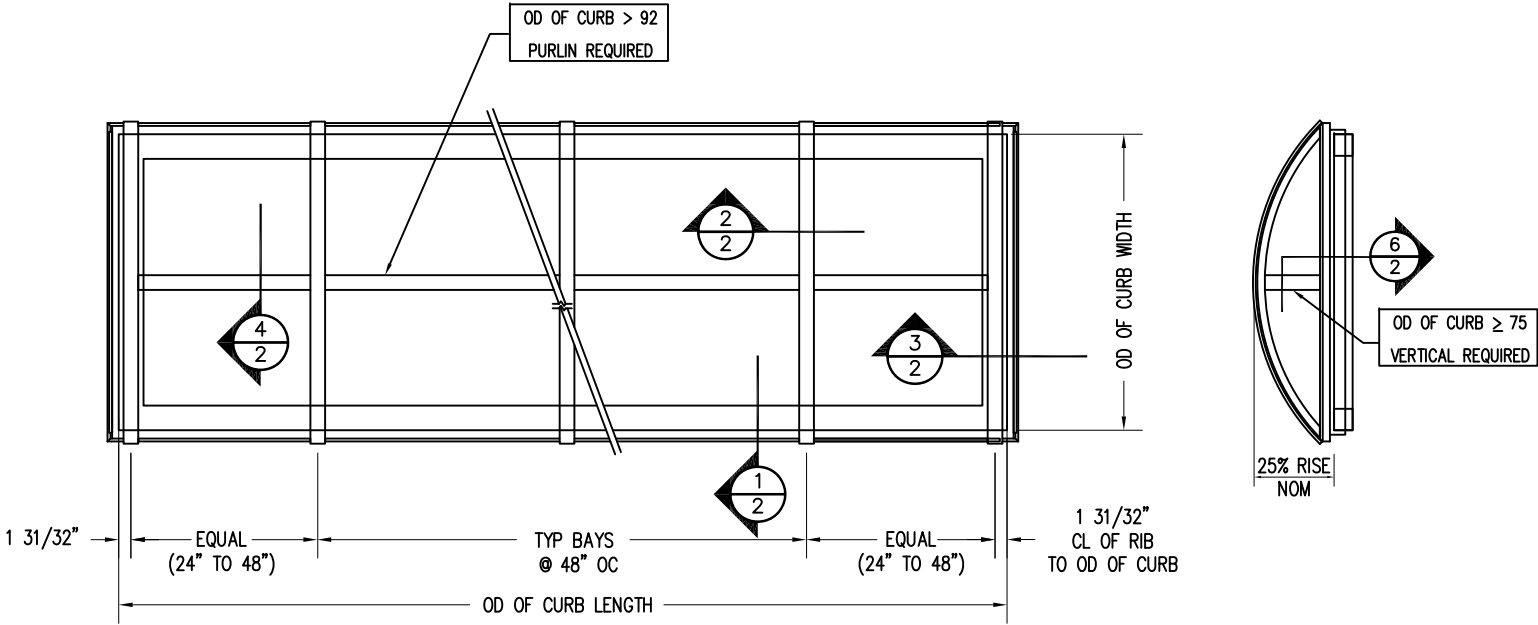
OUTER GLAZING COLOR	INNER GLAZING COLOR
CLEAR	CLEAR
2412 BRONZE	WHITE
WHITE	

METAL FINISH	MED BRZ ANODIZED
MILL	LIGHT BRZ ANODIZED
CLEAR ANODIZED	KYNAR
DARK BRZ ANODIZED	BAKED ENAMEL
	COLOR
	COLOR

THERMAL BARREL VAULT DOUBLE DOME w/ LUMIRA PANEL

SALES ORDER #:	
PROJECT NAME:	
LOCATION:	
CUSTOMER:	
WASCO REP:	

NOTE: THESE DRAWINGS AND THE DESIGNS DEPICTED IN THEM, ARE THE PROPERTY OF VELUX AMERICA, LLC. AND CANNOT BE COPIED OR TRANSMITTED IN ANY FORM WITHOUT THE EXPRESS WRITTEN PERMISSION OF SAME.



STANDARD RIB SPACING IS 48" TYPICAL WITH BOTH END BAYS EQUAL TO OR LESS THAN 48", BUT EQUAL. CUSTOM BAY SPACING AVAILABLE, NOT TO EXCEED 48"

CUSTOMER VERIFICATION REQUIRED

"REVIEWED" STAMPS ARE NOT ACCEPTED

UNIT(S) DETAILED ARE AS REQUESTED IN THE BID INVITATION. THESE DETAILS ACCURATELY REFLECT THE FIELD DIMENSIONS AND CONDITIONS AND ARE RELEASED FOR FABRICATION.

APPROVED: ☐ REJECTED: ☐ APPROVED AS NOTED (PER REVIEW BY WASCO): ☐

PLEASE INITIAL
SUBSEQUENT SHEETS

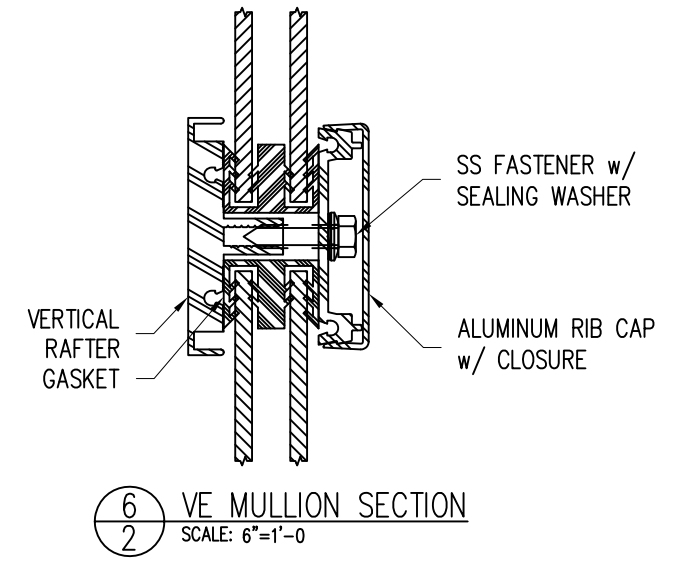
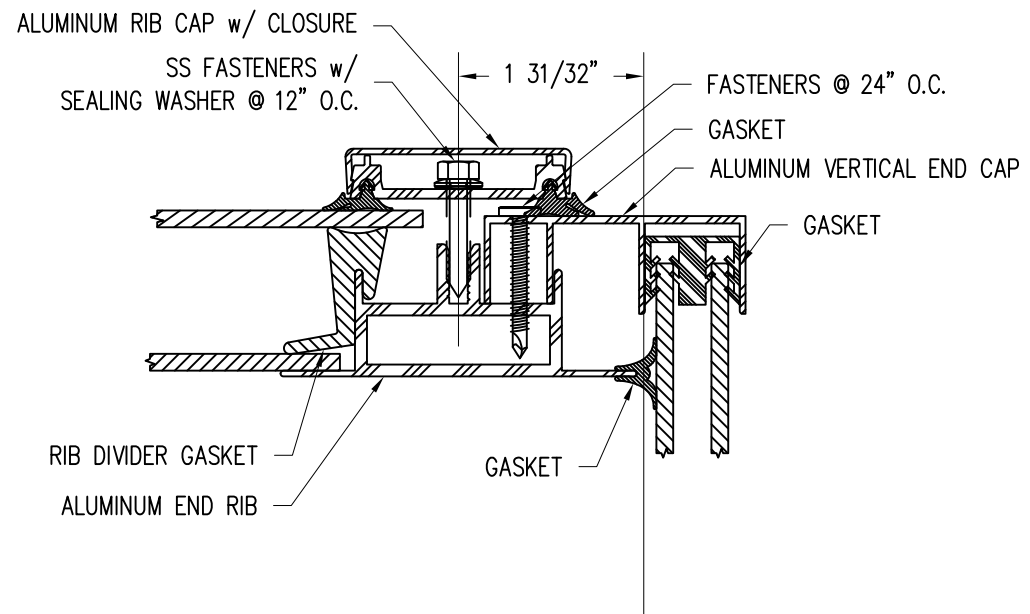
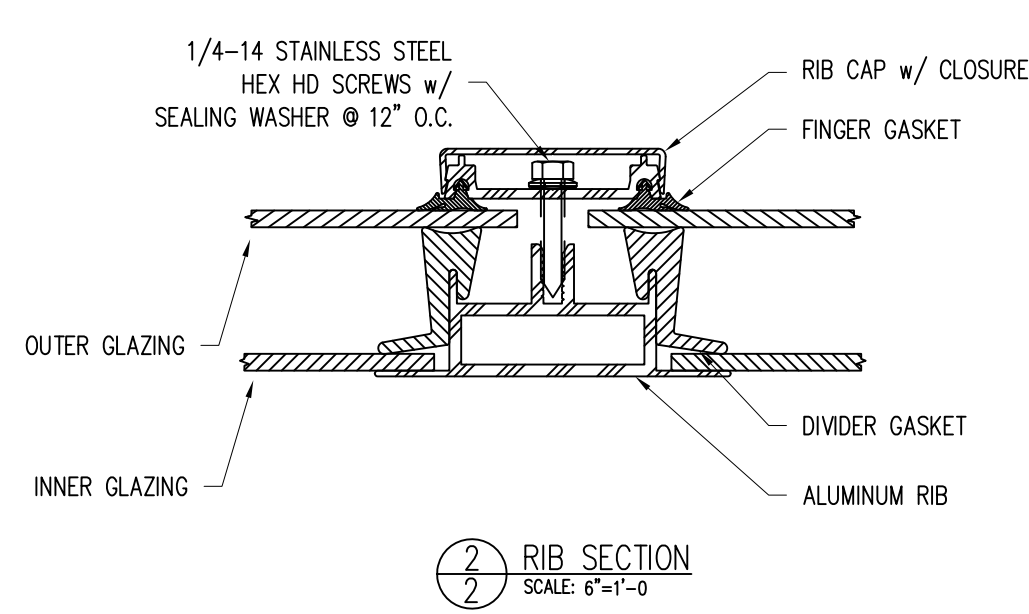
BY: _____ TITLE: _____ DATE: _____

SAFETY CONSIDERATIONS: VELUX SKYLIGHTS ARE DESIGNED TO WITHSTAND NORMAL ELEMENTS OF THE WEATHER. THEY ARE NOT DESIGNED TO WITHSTAND HUMAN IMPACT OR FALLING OBJECTS. THESE SKYLIGHTS SHOULD NOT BE WALKED UPON UNDER ANY CIRCUMSTANCES. THE OWNER OR DESIGNER SHOULD RESTRICT ACCESS ONLY TO AUTHORIZED PERSONNEL WHO HAVE BEEN ADEQUATELY CAUTIONED AS TO THE LOCATION OF THE SKYLIGHT AND INFORMED OF THE WARNING ABOVE OR SAID OWNER SHOULD PROVIDE PROTECTIVE GUARDRAILS OR SCREENS AROUND THE SKYLIGHT.



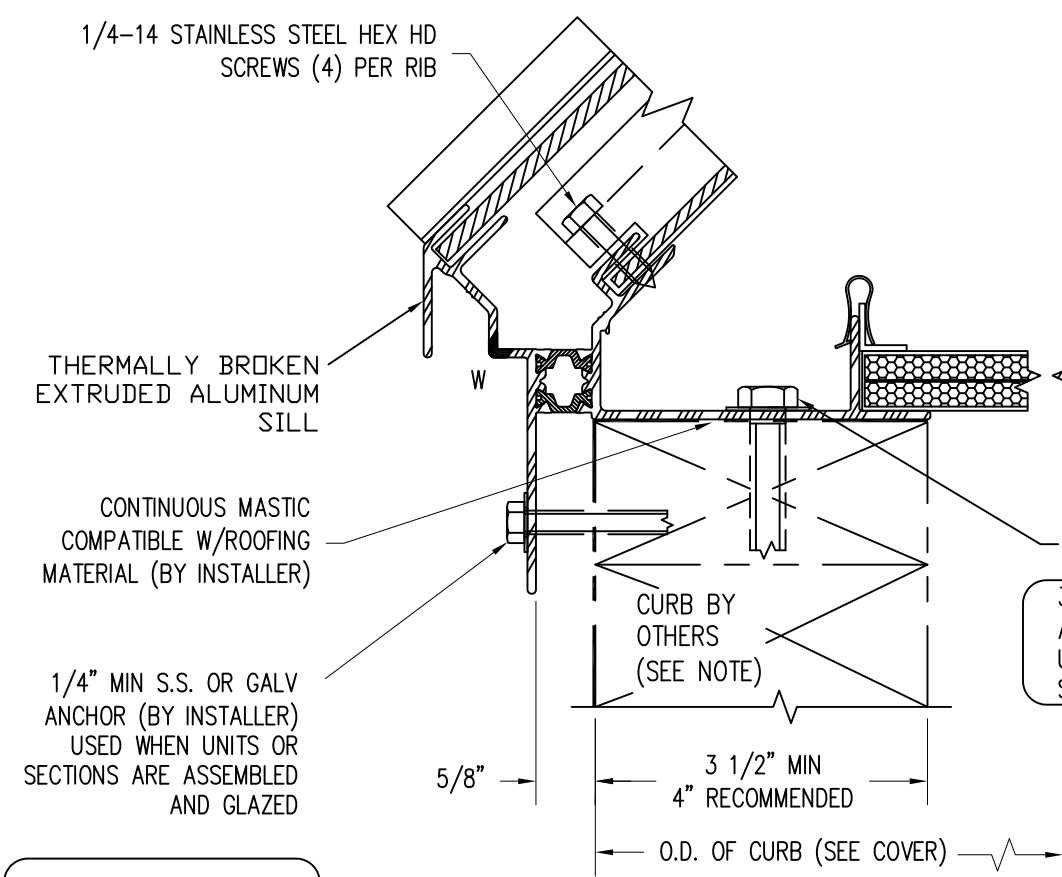
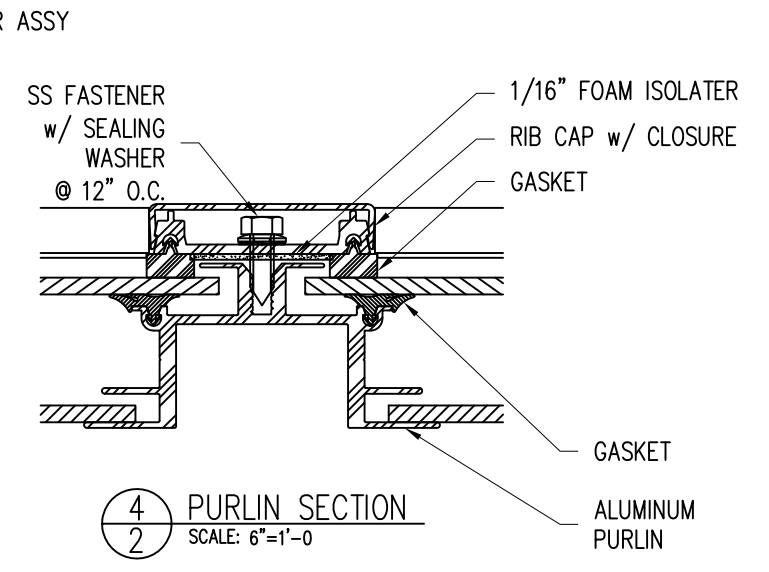
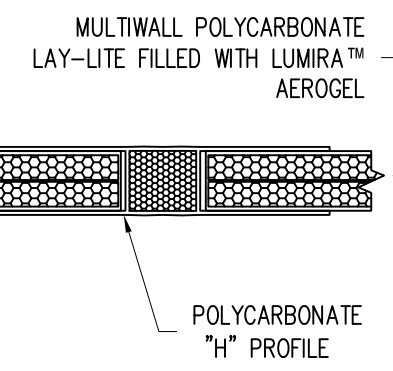
VELUX Wells
85 Spencer Dr, Unit A
Wells, ME 04090
1-800-88-VELUX
veluxusa.com





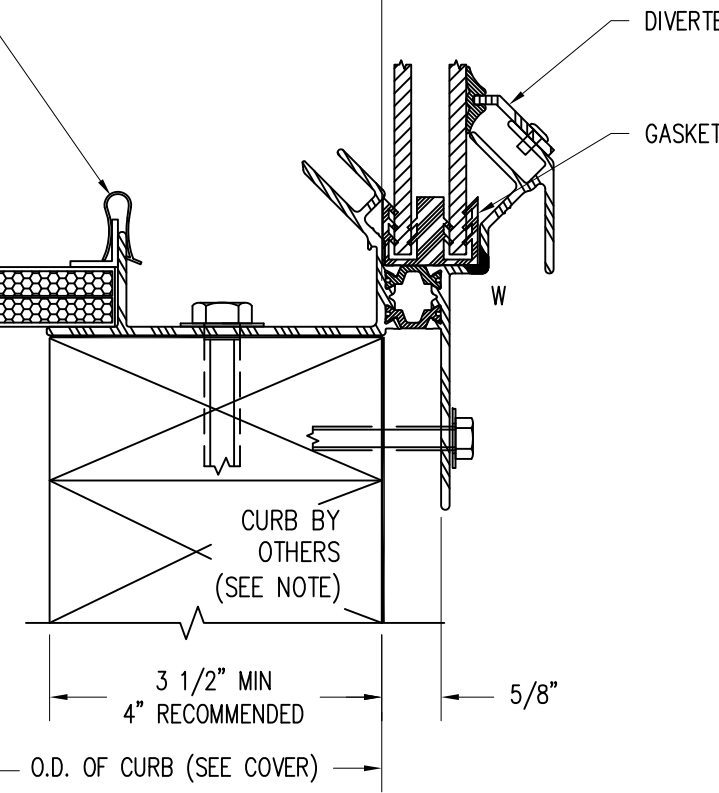
AL06 ALUMINUM ANGLE AND
SPRING CLIP @ 24" O.C.

AL06 ALUMINUM ANGLE AND
SPRING CLIP AT 24" O.C.



S.S. FASTENERS WILL BE
REQUIRED IF PENETRATING
PRESSURE TREATED WOOD

GENERAL CURB/NAILER NOTE: CURBS/NAILERS SHOWN ARE GENERIC. DESIGN AND FABRICATION OF CURBS/NAILERS IS NOT THE RESPONSIBILITY OF VELUX. THEY MUST BE ADEQUATE TO RESIST ALL VERTICAL AND HORIZONTAL FORCES THAT MAY BE IMPOSED ON THEM BY THE SKYLIGHT SYSTEM.
CURBS/NAILERS MUST RESIST A HORIZONTAL THRUST AT EACH END OF EACH RAFTER. AEE CHART



CUSTOMER INITIAL			
Wasco Part of VELUX Commercial		VELUX Wells 85 Spencer Dr, Unit A Wells, ME 04090 1-800-88-VELUX veluxusa.com	
ORDER#:	INQ#	REV	SHEET
		0	2 OF 2

BARREL VAULT (25% RISE) HORIZONTAL THRUST CHART (48" RIB SPACING)

