



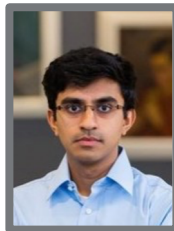
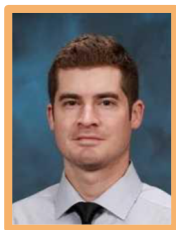
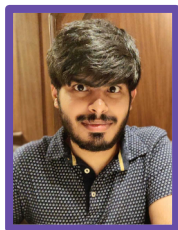
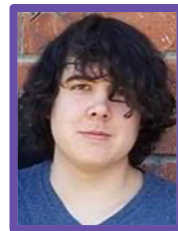
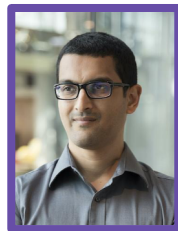
Carnegie Mellon University

High-fidelity Accelerated Design of High-performance Electrochemical Systems

Rachel Kurchin

Postdoctoral Fellow, Carnegie Mellon University

Our Team



CMU Citrine Informatics

Julia Computing MIT

QuantumScape

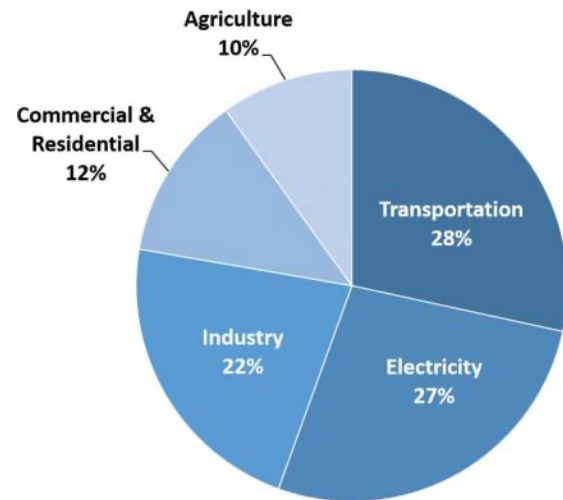
External Collaborator

Carnegie
Mellon
University

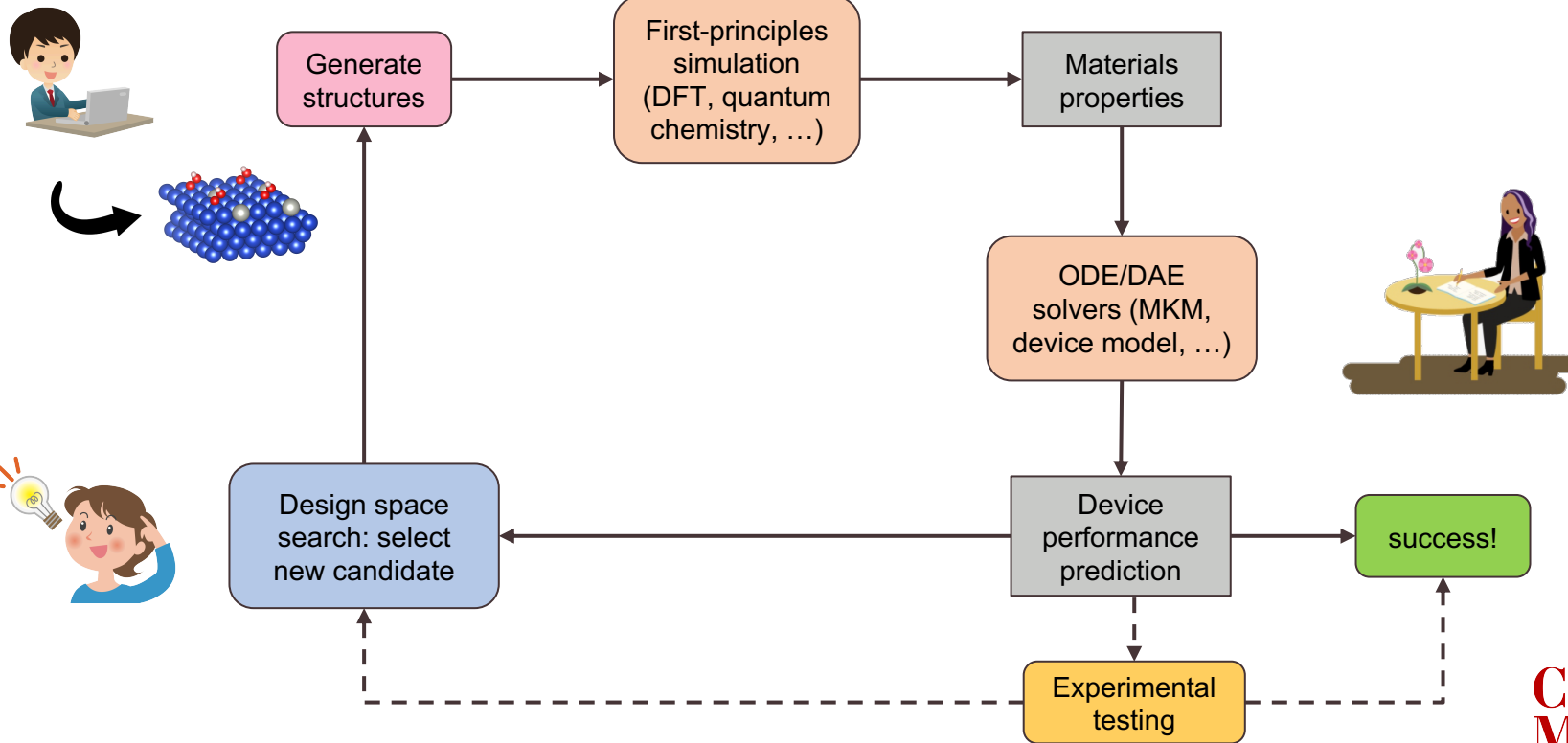
Electrification is key to addressing the climate crisis

- Renewable electricity sources (e.g. photovoltaics, wind) are critical, but insufficient
- Electrochemical devices provide ways to **store electricity** and also to **electrify industries** that still rely on fossil fuels
- We are developing a *generalizable workflow* for significantly faster discovery of new electrochemical materials and systems than was previously possible
- Two specific case studies
 - Electrochemical ammonia production (fertilizers)
 - Lithium-metal batteries (transportation+)

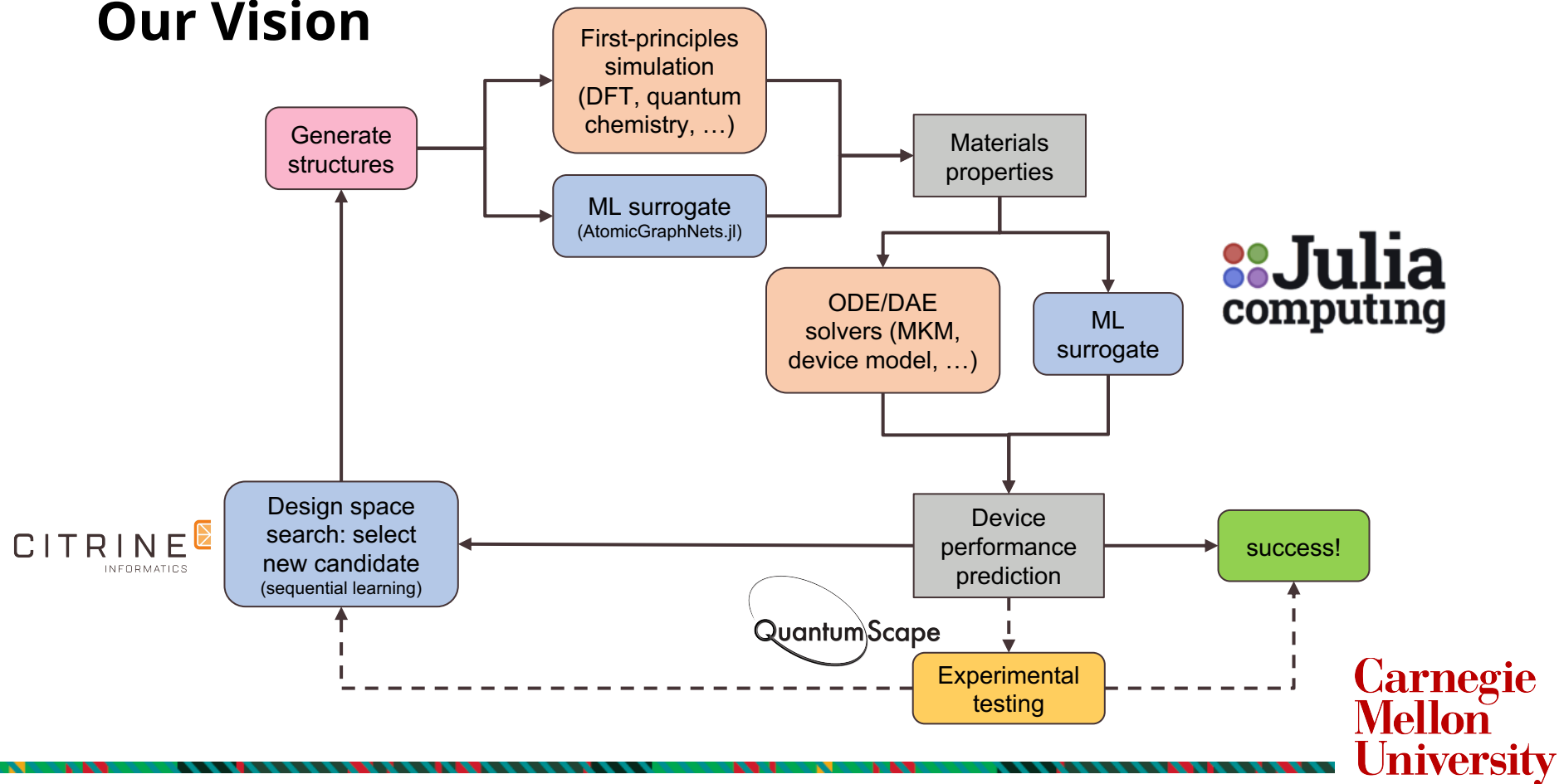
Total U.S. Greenhouse Gas Emissions
by Economic Sector in 2018



State-of-the-Art



Our Vision



Acknowledgements / Contact Information



rkurchin@cmu.edu



<https://www.cmu.edu/aced>



<https://www.github.com/aced-differentiate>

**Carnegie
Mellon
University**