



# EHS Environment Management Waste Management Overview

Hitesh Patel  
Q2 2023

PUBLIC

# SAP Cloud for Sustainable Enterprises

## HOLISTIC STEERING AND REPORTING

Go from averages to actuals and record data on transactional level

### Zero Emissions

with Climate Action

**Decarbonize** your entire value chain (scope1-3) based on actual business transactions

SAP EHS  
Environment  
Management

### Zero Waste

with Circular Economy

Incorporate **circularity** into your supply chain & create sustainable business models

SAP EHS  
Environment  
Management

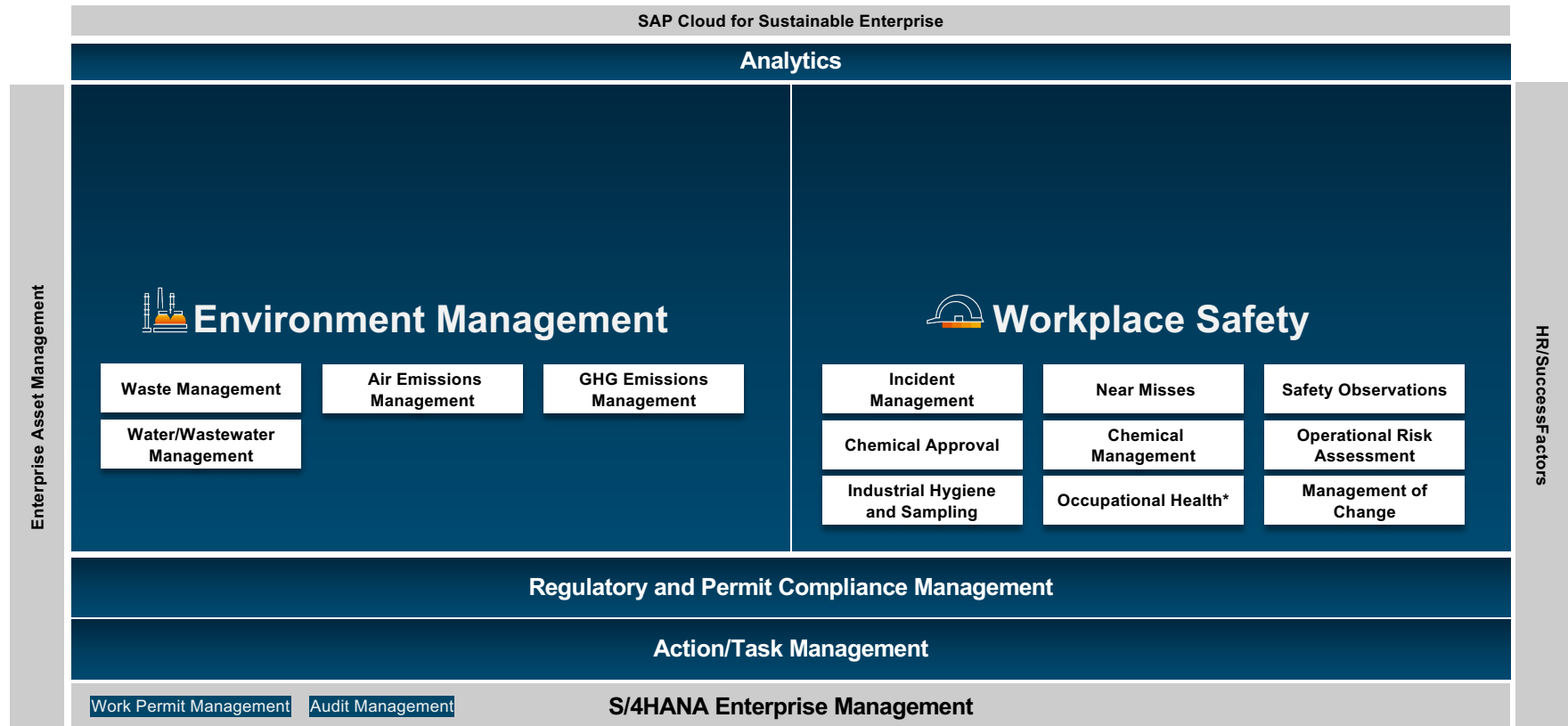
### Zero Inequality

with Social Responsibility

Understand the **impact of** your **business** on **people and the society**

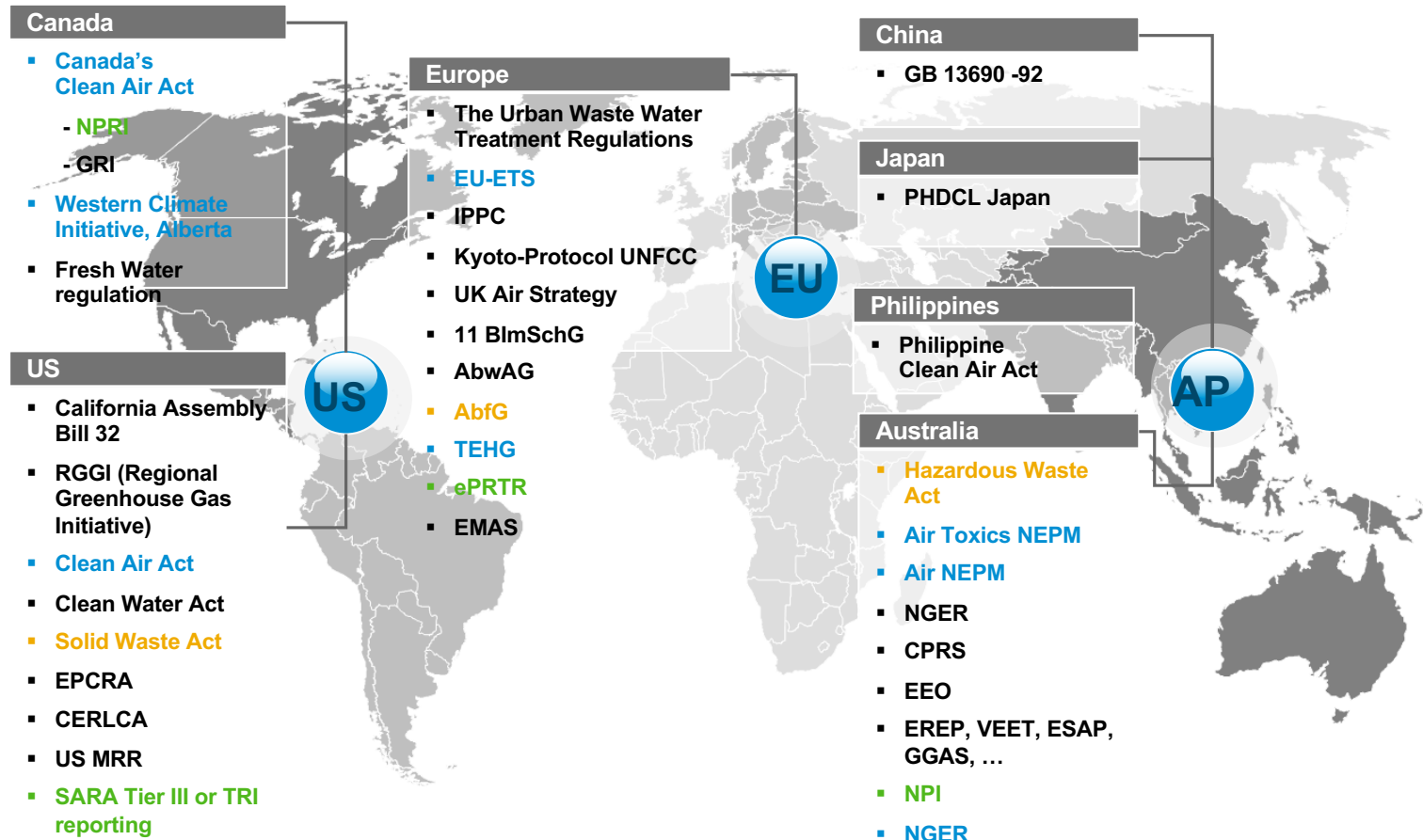
SAP EHS  
Workplace  
Safety

# SAP EHS Solution Portfolio for Sustainable Operations



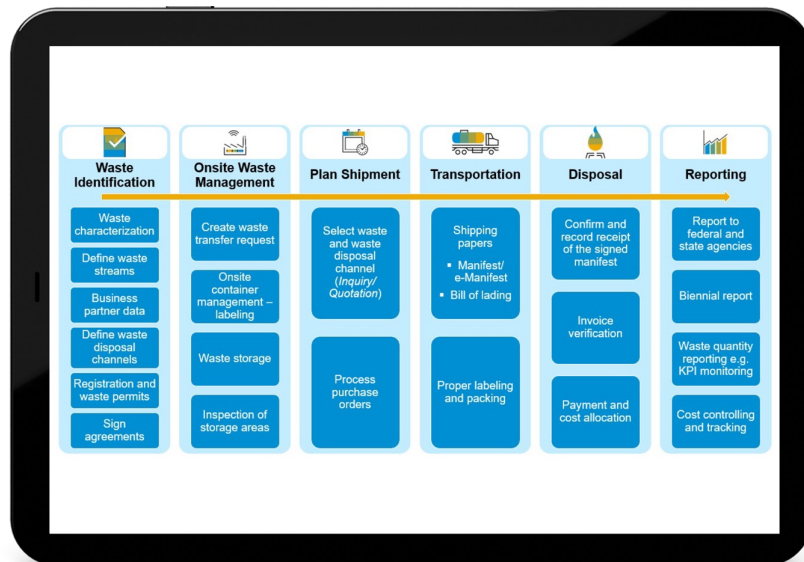
\*OH licensed separately

# Environmental Legislations & Policies (Examples)



# SAP® EHS Environment Management

## Waste Management



### In a Nutshell

SAP EHS Environment Management helps organizations manage their environmental impact by supporting inventories and tracking air, water and waste outputs (including greenhouse gases).

### Goals

- Systematic management of waste from generation to disposal (“cradle-to-grave”)
- Identify Waste minimization (recycle/reduce) opportunities
- Cost allocation/reduction
- Reduction of penalties/non-compliance

### Capabilities

- Waste identification & characterization
- Onsite waste management
- Shipment planning & compliance
- Compliant shipping
- Disposal Management
- Comprehensive KPI reporting
- On-premise or cloud deployment
- GRI Metrics 306 Waste
- GHG Scope 3.5 waste generated in operations emissions

### Supporting Applications

- SAP Product Compliance
- SAP Dangerous Goods Management
- SAP Materials Management
- SAP S/4HANA®

### Benefits



**360° Compliance:**  
ensure uninterrupted compliance each and every step of the ‘waste generation to disposal’ cycle



**Less Waste:**  
make sustainability profitable by easily identifying novel, cheaper ways to reduce your waste output



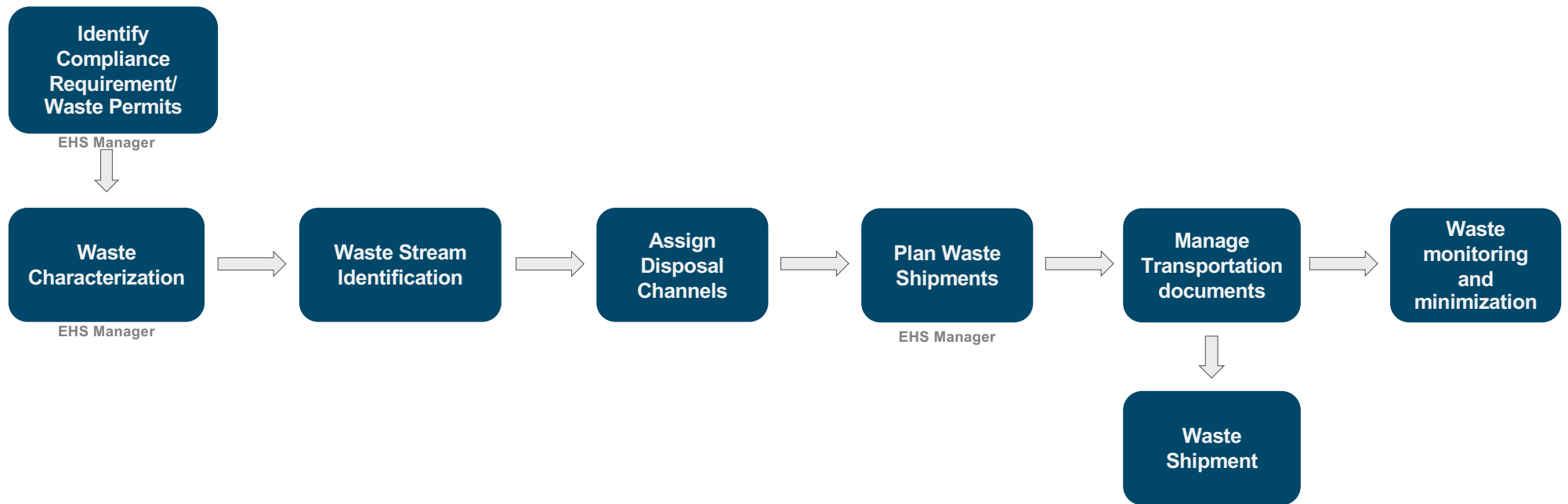
**Operational Continuity:**  
avoid disruption and delays through a streamlined oversight system tracking all water, air and waste outputs

### More Information:

[SAP Environment, Health and Safety](#)  
[SAP Environment, Health, and Safety Help Portal](#)

# Waste Management

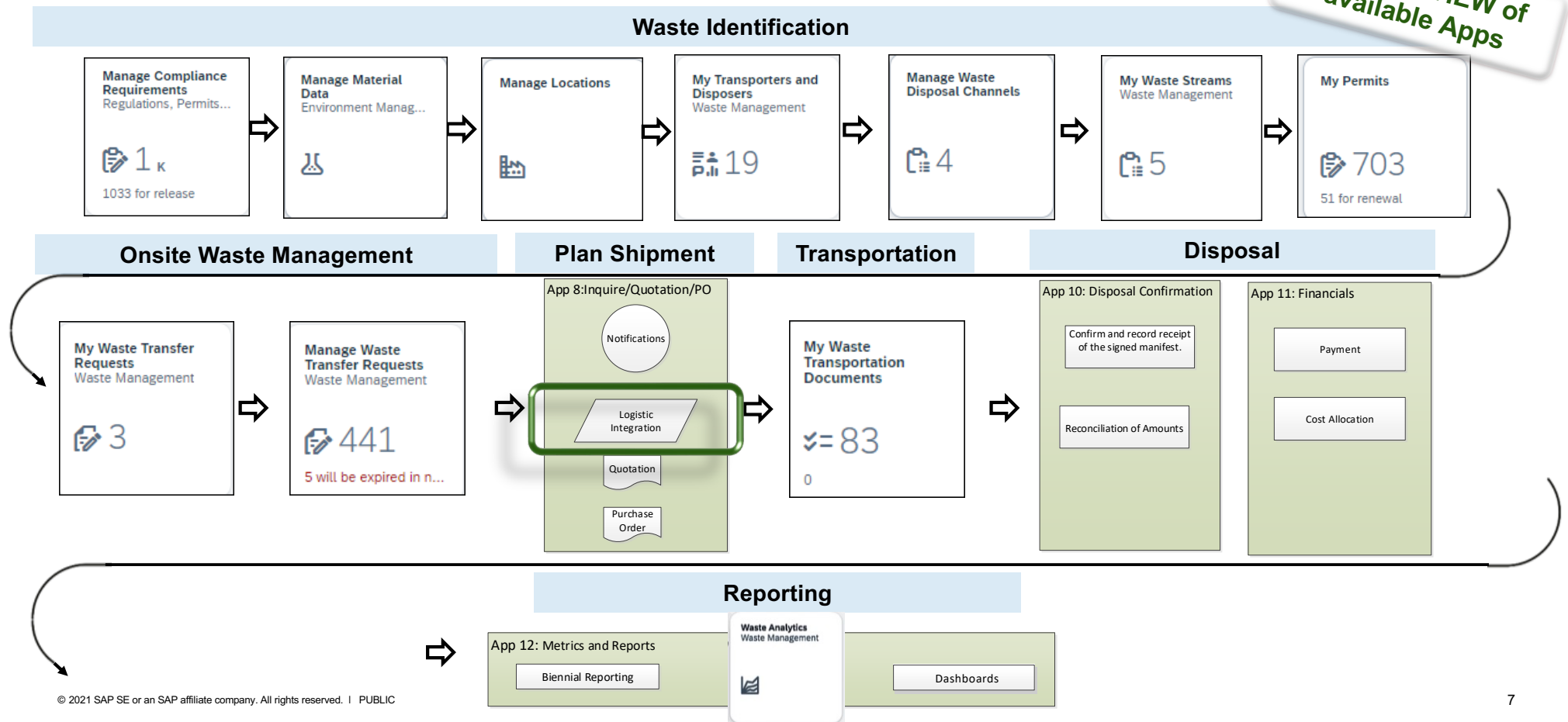
## Business Process



# SAP S/4HANA in year 2023 – SAP EHS

## Planned Waste Management Innovations

LAB PREVIEW of  
available Apps



## Apps and Activities ▾

[Add Apps](#)

Favorites

Recent Activities

Frequently Used

**Manage Compliance Requir...**  
Regulations, Permits, Policies**Manage Locations****Manage Material Data**  
Environment Management**My Permits****My Transporters and Dispos...**  
Waste Management**My Waste Streams**  
Waste Management**Manage Waste Disposal Cha...**  
Waste Management**Manage Waste Transfer Req...**  
Waste Management**My Waste Transportation Documents****Waste Analytics**  
Waste Management

## To Dos (12) ▾

[🔄 now](#) [Show More](#)**Review and complete Incident ID 61: 13.03.2023, 00:00:00, Test**

Medium Priority

Created By: SAP\_WFRT

Task created 1 mo. ago

**Review and complete Incident ID 58: 19.01.2023, 00:00:00, testVR**

Medium Priority

Created By: SAP\_WFRT

Task created 3 mo. ago

**Review and complete Incident ID 57: 30.08.2022, 00:00:00, Test Deviation Incident (Dorothy)**

Medium Priority

Created By: SAP\_WFRT

Task created 4 mo. ago

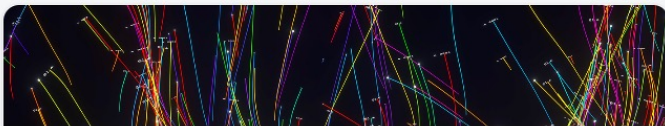
**Review and complete Incident ID 47: 02.09.2022, 00:00:00, Leak detected for AIS HOV**

Medium Priority

Created By: SAP\_WFRT

Task created 5 mo. ago

## Pages ▾

[Manage Pages](#)**Knowledge Graphs: The Dream of a Knowledge Network**

Knowledge graphs can help bridge scientific disciplines and data silos, cr...

2 days ago

  
**Environment Management**





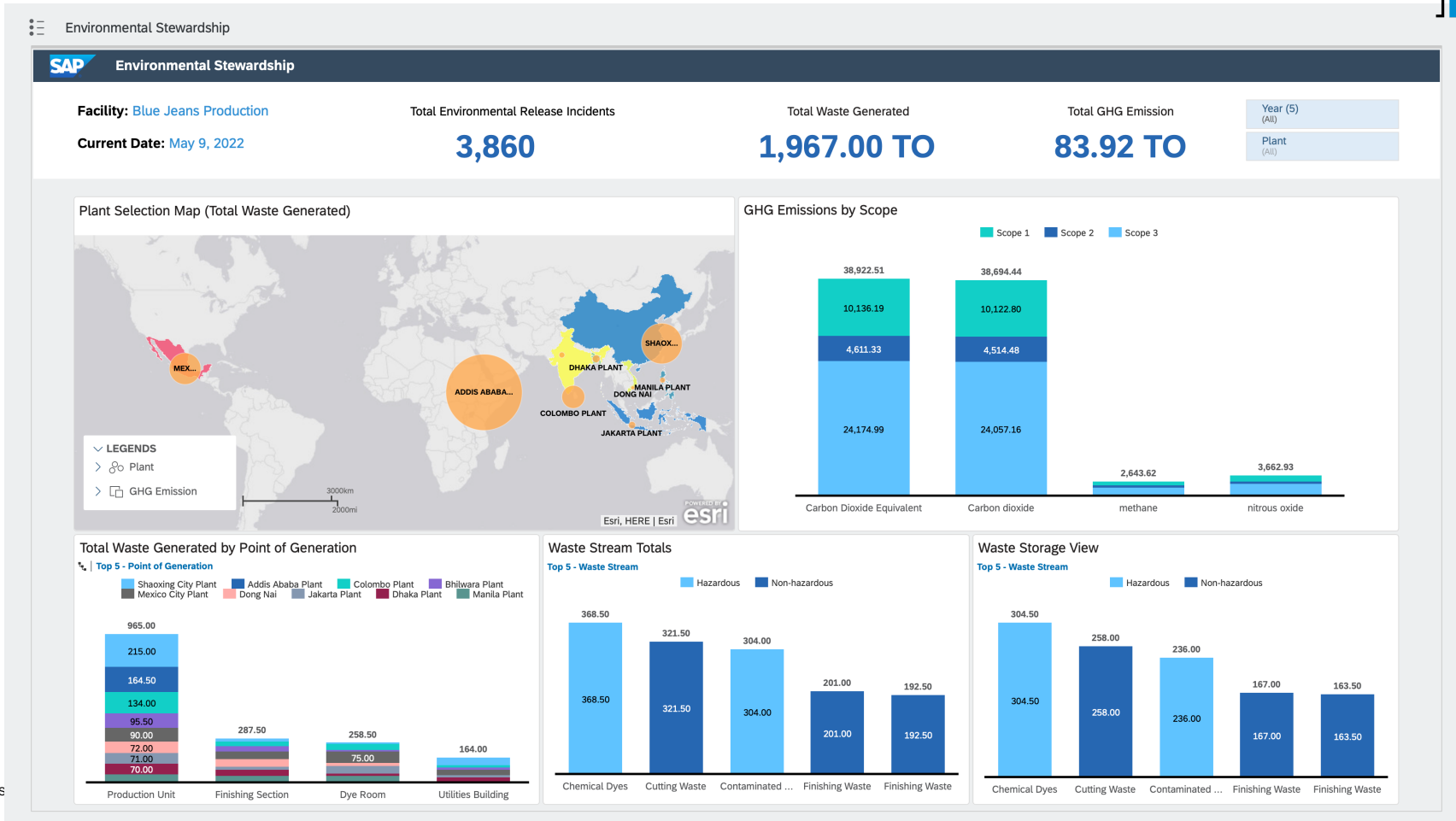
[Go](#) [Adapt Filters \(2\)](#)

Details View By          

■ Hazardous (01) ■ Non-Hazardous (02) ■ Not assigned

[illegible]

# SAP EHS with SAP Analytics Cloud



# Waste Management

## Delivered Content

Waste Content	Paragraph	Regulatory Lists
Title 40: Protection of Environment; PART 261 - IDENTIFICATION AND LISTING OF HAZARDOUS WASTE	Subpart C—Characteristics of Hazardous Waste	List of D codes
	Subpart D—Lists of Hazardous Wastes	List of P Codes List of F codes List of U codes List of K codes
EN: COMMISSION DECISION: 2014/955/EU	ANNEX: LIST OF WASTE REFERRED TO IN ARTICLE 7 OF DIRECTIVE 2008/98/EC	LIST OF WASTE
DE: BESCHLUSS DER KOMMISSION 2014/955/EU	ANHANG: ABFALLVERZEICHNIS GEMÄSS ARTIKEL 7 DER RICHTLINIE 2008/98/EC	LIST OF WASTE

# Waste Management in [SAP Help Portal](#)

The screenshot shows the SAP Help Portal interface. At the top, the header includes the SAP logo, 'SAP Help Portal', and 'SAP S/4HANA'. On the right, there are links for 'Browse by Product' and 'SAP Learning Journeys'. Below the header, the main navigation bar displays 'Environment, Health, and Safety', '2021 Latest', and 'English'. A search bar is present with the placeholder 'Enter keywords or a product name' and a magnifying glass icon. To the right of the search bar is a 'Create Content' button. Below the search bar, the breadcrumb trail reads 'Home / Environment Management (EHS-SUS-EM) / Waste Management (EHS-SUS-WA) /'. On the left side, there is a 'Table of Contents' panel with a list of topics. The topic 'Working with Waste Materials - Process Overview' is highlighted in blue. The main content area on the right shows the title 'Working with Waste Materials - Process Overview' with a star icon. Below the title, there is a paragraph explaining the role of an Environmental manager. This is followed by a numbered list of three steps: 1. Create a material in the 'Manage Material Data - Environment Management' app... 2. Assign a disposer and transporters to the waste material in the 'My Transporters and Disposers - Waste Management' app... 3. In the 'My Waste Streams - Waste Management' app, create waste streams... At the bottom of the main content area, there is a 'Note' box with an information icon and text stating that transporters and disposers are assigned at the waste material level, while waste streams are created at the product level.

SAP Help Portal SAP S/4HANA

Environment, Health, and Safety 2021 Latest English

This document Enter keywords or a product name

Advanced Search

Home / Environment Management (EHS-SUS-EM) / Waste Management (EHS-SUS-WA) /

Table of Contents

- Working with Waste Materials - Process Overview
- Exporting Environmental Data
- Technical Information
- Data Archiving in Environment Management
- Apps Used in Environment Management
- Data Protection in Environment Management
- Waste Management (EHS-SUS-WA)
  - Working with Waste Materials - Process Overview
  - Transporters and Disposers
  - Waste Streams
  - Waste Transportation Documents

<Previous

## Working with Waste Materials - Process Overview ☆

Next>

As an Environmental manager, you may have responsibility for generating, storing, transporting, and disposing of materials deemed to be waste relevant. The following provides an overview of the high-level steps involved:

1. Create a material in the **Manage Material Data - Environment Management** app and assign the **Disposed** logistics role to it. Only materials with this role assigned can be used in waste processes. A waste material can comprise of one or more unpackaged products and their associated packaged products.  
  
You can also use this app to assign waste codes to waste materials so that these waste materials can comply with the relevant environmental regulations, standards, and laws. You can select from waste codes that have already been entered as a regulatory list in a Compliance Requirement Regulation. For more information about adding waste codes to regulatory lists, see [Creating Regulatory Lists](#). Waste codes are required for the creation of waste disposal documents that meet compliance requirements.
2. Assign a disposer and transporters to the waste material in the **My Transporters and Disposers - Waste Management** app.  
  
A business partner can only be designated as a transporter or disposer if they have been assigned to a business partner role mapped to the relevant waste partner type. Waste partner types are predefined in the system as 01 - Transporter and 02 - Disposer. For more information, see [Transporters and Disposers](#).
3. In the **My Waste Streams - Waste Management** app, create waste streams, including waste disposal channels for the waste products associated with the waste material. You must previously have assigned products to the waste material using the **Manage Material Data - Environment Management** app.

**Note**  
Transporters and disposers are assigned at the waste **material** level but waste streams, including disposal channels are created at the level of the **products** assigned to the waste material.



# Thank you



**Hitesh Patel**

Product Manager  
SAP EHS Environment Management

**SAP SE**

E [hitesh.patel@sap.com](mailto:hitesh.patel@sap.com)

[www.sap.com](http://www.sap.com)