



INSIGHTS. INSPIRE. INNOVATE.

## SAP Digital Supply Chain Masterclass

# Engineering Excellence with **Product Lifecycle Management 4.0**

Speaker's Name, SA02 P  
Mar , 2021

PUBLIC

THE BEST RUN



# Speakers



## **Praveen Ramamurthy**

Director, Global Center of Excellence, Digital Supply Chain, SAP

[Praveen.Ramamurthy@sap.com](mailto:Praveen.Ramamurthy@sap.com)



## **Sankar Natarajan**

Global Consulting Head – Digital Product Value Chain & Industry 4.0

Wipro Limited

[Sankar.Natarajan1@wipro.com](mailto:Sankar.Natarajan1@wipro.com)

# Agenda

- 1 A Dream Team brings unique value

---
- 2 Enabling Digitalization of Product Value Chain

---
- 3 Next Generation Integration

---





# Agenda

- 1 A Dream Team brings unique value

---
- 2 Enabling Digitalization of Product Value Chain

---
- 3 Next Generation Integration

---



**THE BEST RUN**



**&**

**SIEMENS**

*Ingenuity for life*

## **The Dream Team.**

Two industry leaders combine their expertise in product lifecycle, supply chain and asset management to deliver unprecedented new innovations and business models that remove silos, and accelerate industrial transformation.



# The best of **both** worlds

**SAP**

The world leader in enterprise application software and end-to-end supply chain solutions, from product design to operations. Built on a digital platform that delivers a completely intelligent enterprise with the world's largest business network.



**SIEMENS**  
*Ingenuity for Life*

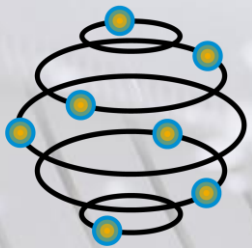
The leader in product lifecycle software and digital transformation, with expertise in mechanical, electronic and software engineering, Siemens Digital Industries Software is an innovation and technology leader in industrial automation and digitalization.



- Dramatically improve time to value
- Design products with real-time supply chain
- Create a sustainable product development process
- Create a single digital thread

# The digital thread that **ties everything together**

The holy grail of product and asset lifecycle management is born.



It's been the dream of every manufacturer, product design team, and service lifecycle manager to have a single digital thread that integrates all the real-time information, feedback, performance, and data on a product from cradle to grave. Now every downstream team will have in-the-moment access to what every other group is doing. Processes will go from reactive to predictive.



## How the Partnership will Work

- SAP to begin reselling Siemens Teamcenter software as its core platform for product data management.
- Siemens to begin reselling SAP Intelligent Asset Management and SAP Project and Portfolio Management.
- SAP and Siemens will provide an integrated digital thread across the product lifecycle for their customers.
- SAP and Siemens remain committed to supporting existing installed base customers throughout their lifecycle
- Industry 4.0 Alliance





# INDUSTRY 4.0 – Future of Productivity

\* TTM: Time to Market

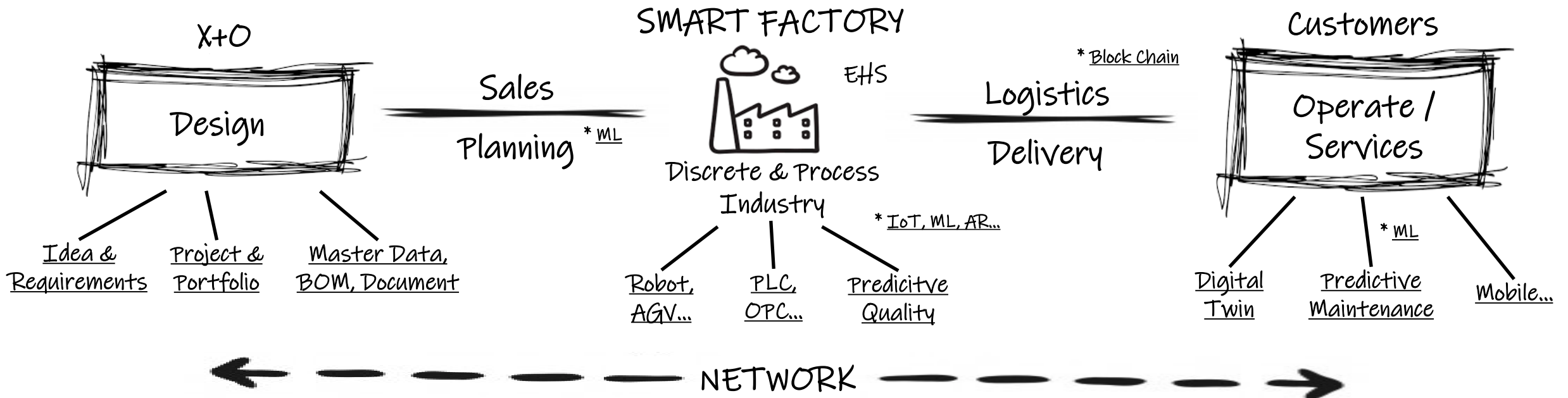
\* TTV: Time to Volume

Revenue Secure - TTM, TTV

Cost Reduction - Production, Inventory, Maintenance

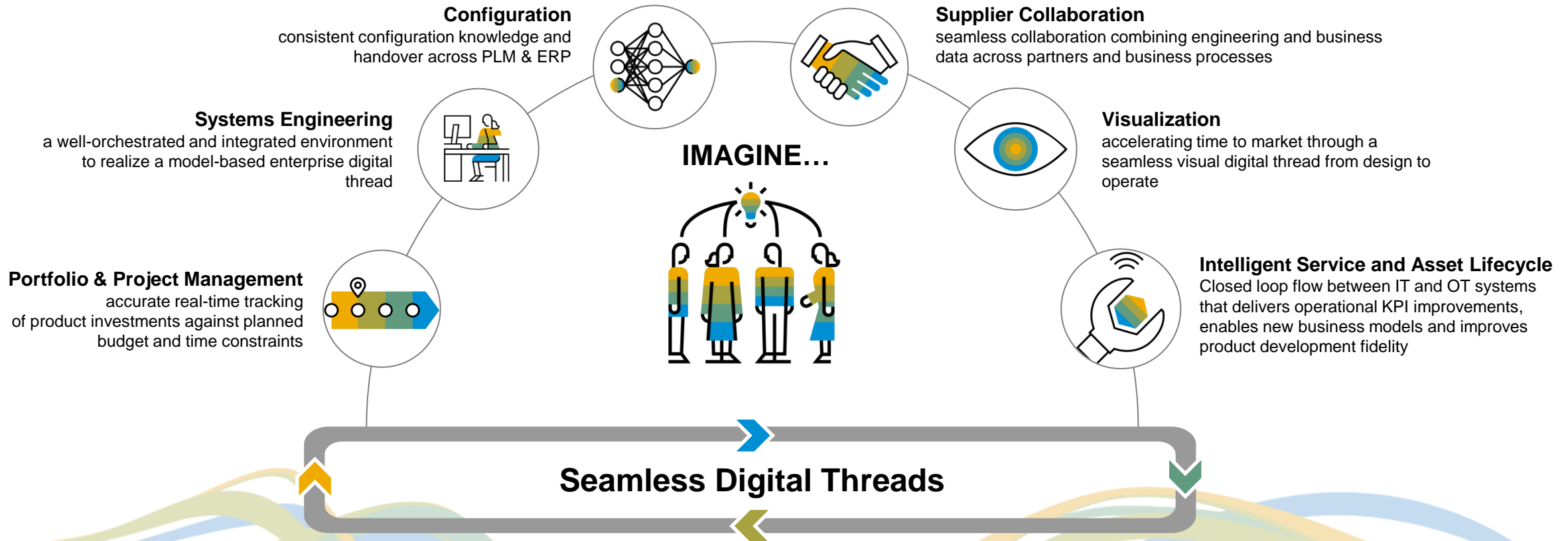
Cash flow - Days in Inventory

New Revenue Stream – New business model & Services



# Siemens & SAP: Creating End-to-End Process Threads

## Partnership and Synergistic Areas

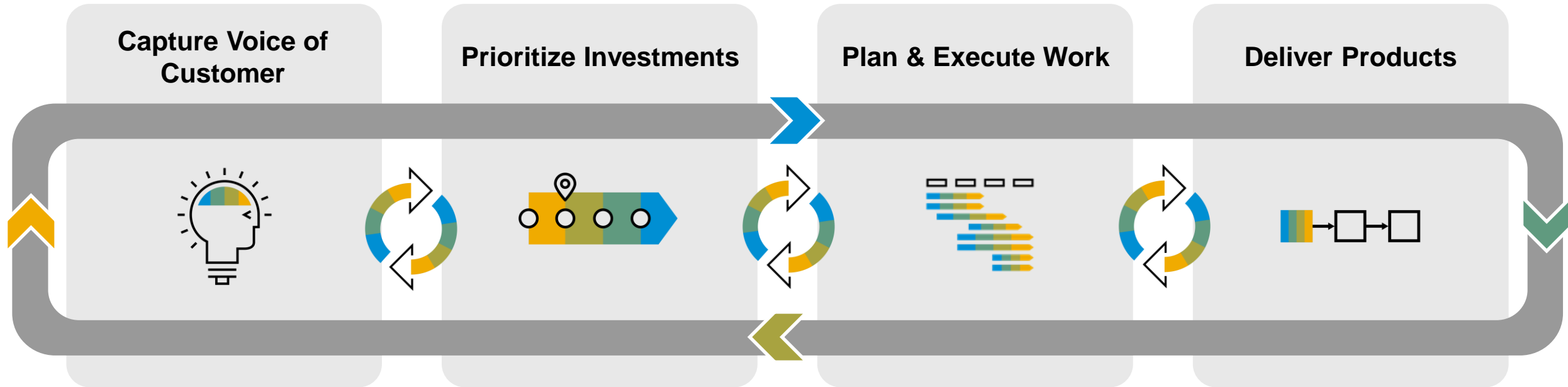


- Both companies will continue to develop and sell their own manufacturing planning and execution applications. Customer will choose the best fit for their business needs.
- SAP and Siemens remain committed to supporting existing installed base customers throughout their lifecycle



# Enterprise Portfolio & Project Management

Accurate real-time tracking of product investments against budget and time constraints



## Execute Business Strategy

Align project and product investments with corporate goals

## Increase Project Efficiency

Execute projects in a collaborative environment enriched with design data

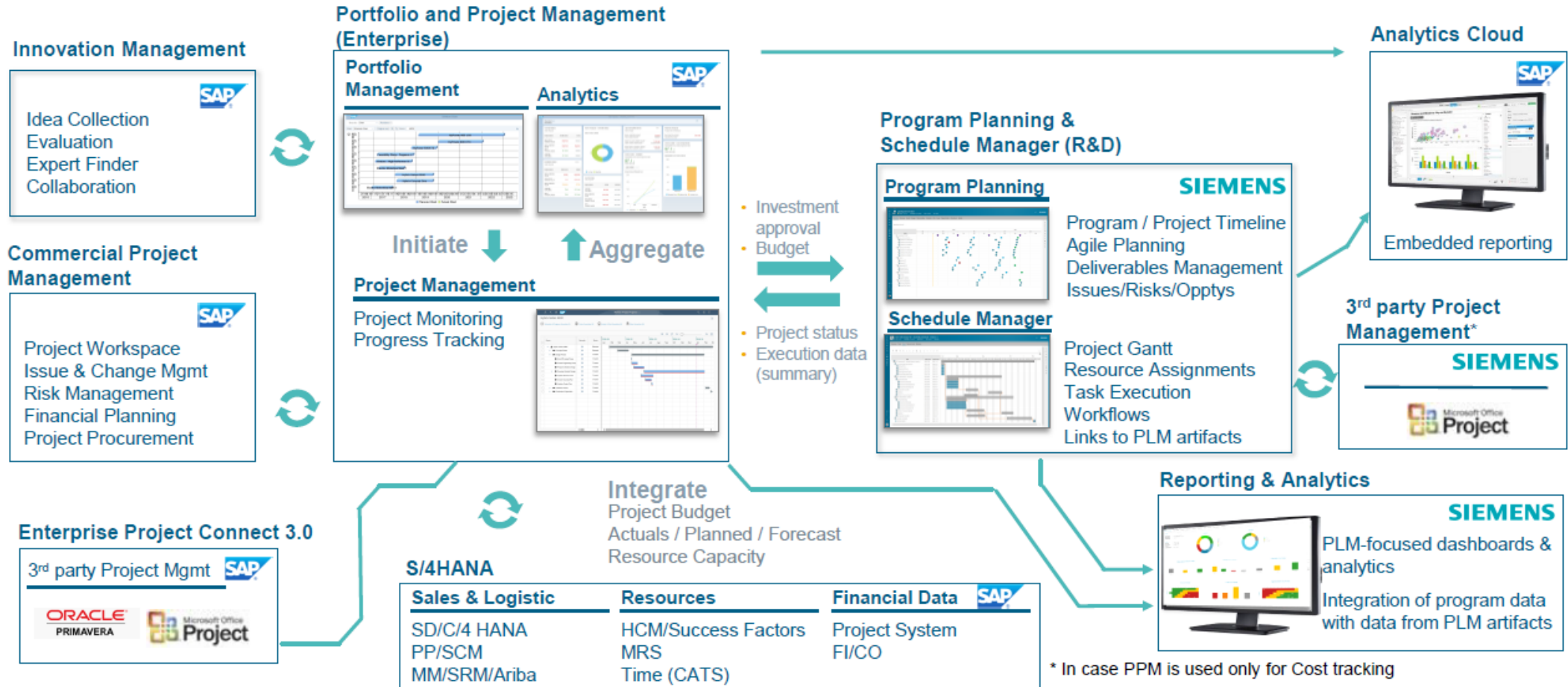
## Drive Profitable Projects

Provide real time cost and progress insights to all stakeholders

# Example Solution Landscape

## Portfolio and Project Management Example: Solution Landscape

**SIEMENS**  
Ingenuity for life



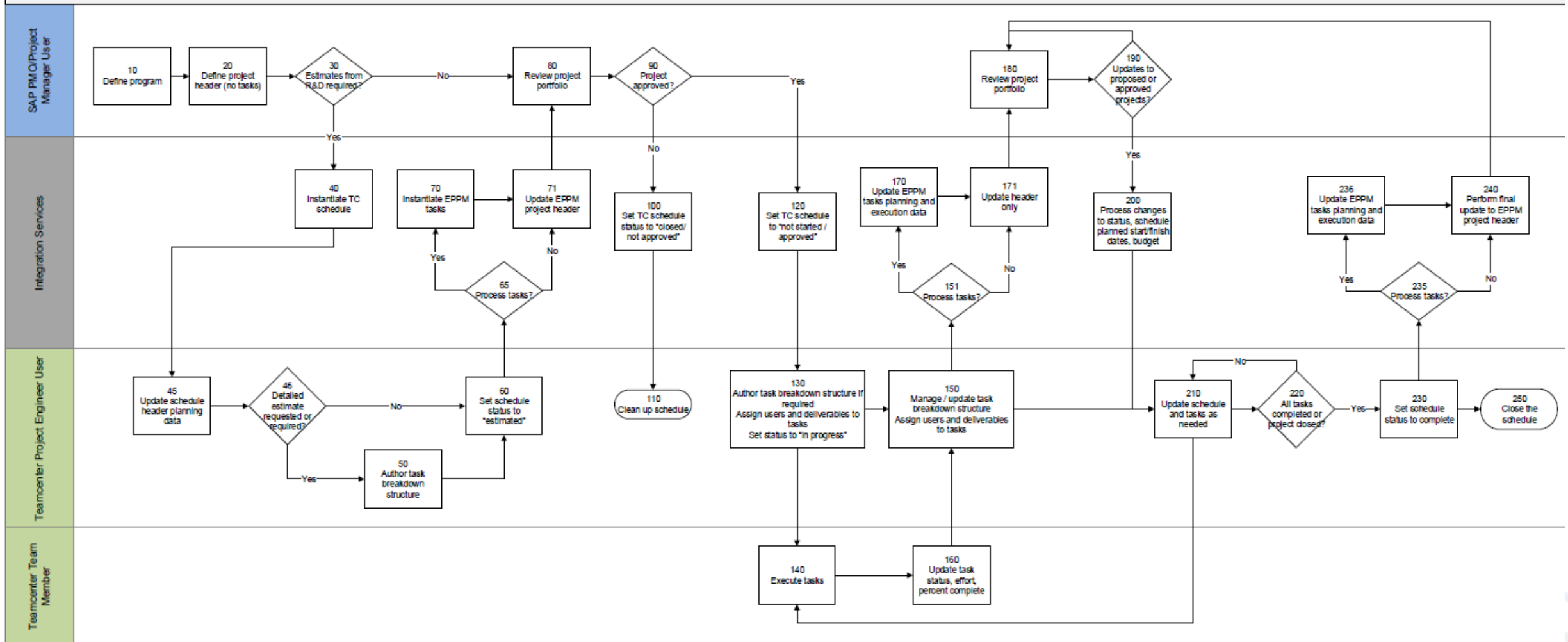
**SIEMENS**

THE BEST RUN **SAP**



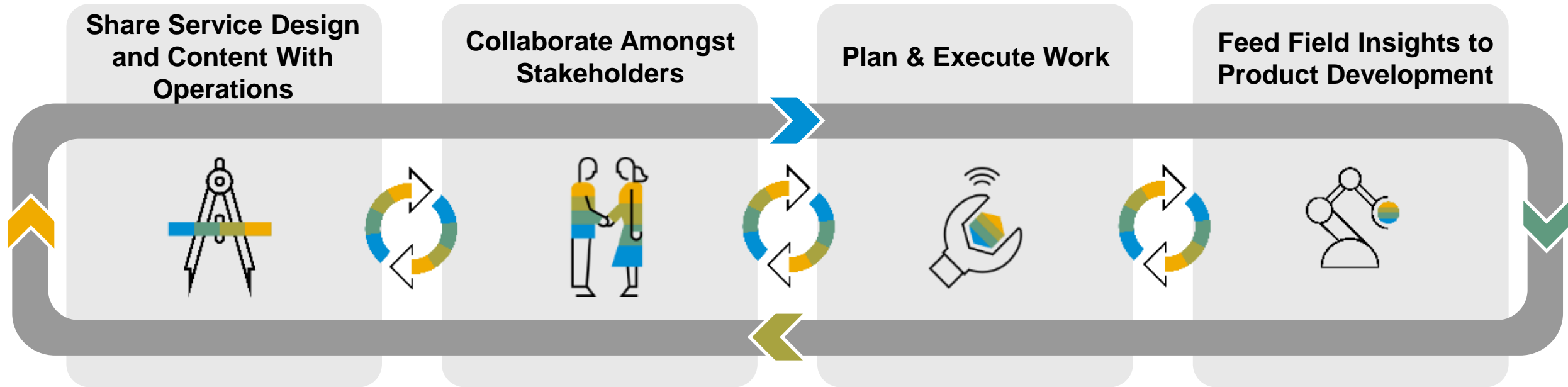
# Example Workflow Scenario

## Scenario 1: Portfolio-driven planning



# Intelligent Service and Asset Lifecycle

an integrated flow of asset information between product development and asset operations



## Improve Asset Reliability

Manage assets more effectively through integrated service planning and engineering content

## Lower Maintenance Costs

Increase asset uptime & drive maintenance cost efficiencies through risk, criticality and predictive maintenance solutions

## Increase Design Efficiency

Leverage field operational data to drive product improvements and solution innovations

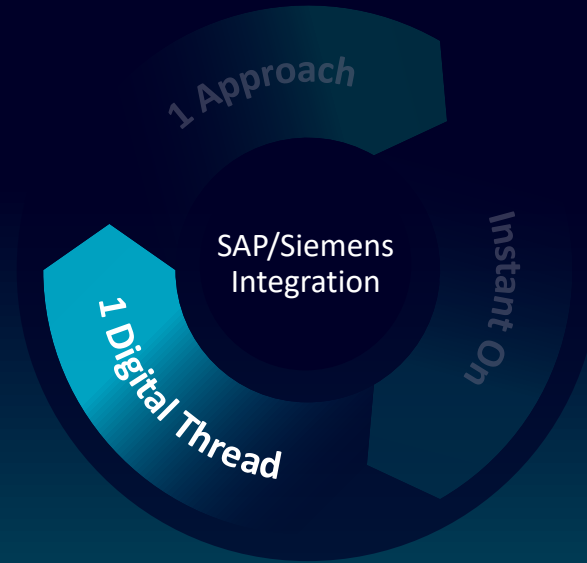


# SAP & Siemens – A New Paradigm for Product Lifecycle Management, with customer choice



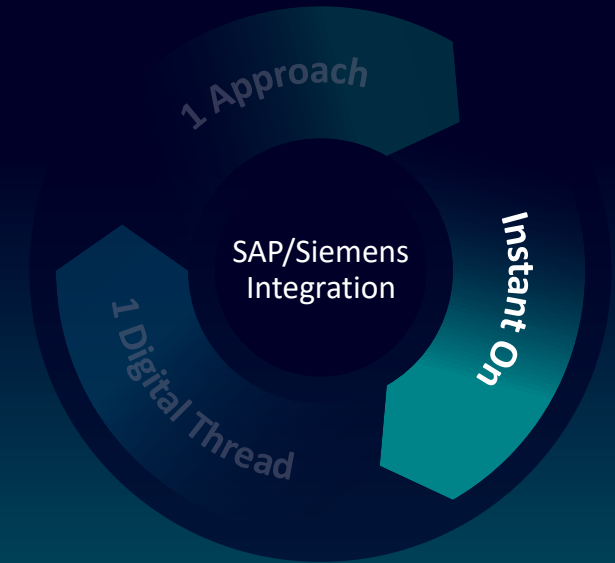
## Our Approach

SAP and Siemens have partnered to integrate their leading PLM and ERP solutions through a new product that will be available from both companies. Organizations will be able to choose which tools to use, and how to implement, without worrying about the complexity of integration.



## The Digital Thread

The Siemens and SAP partnership delivers a digital thread that runs through product engineering, manufacturing engineering and manufacturing execution – going beyond standard integrations to comprehensively connect data and processes.



## On the road to Instant Value

SAP and Siemens have released an integration roadmap, and over the next 3 releases will connect Teamcenter and S/4 HANA so that customers can realize instant-on value from their solutions.

# Agenda

- 1 A Dream Team brings unique value

---
- 2 **Enabling Digitalization of Product Value Chain**

---
- 3 Next Generation Integration

---







INDUSTRY4.NOW

# Enabling Digitalization of Product Value Chain

*Powered by Siemens Teamcenter and SAP Suite*

**Sankar Natarajan**

Global Consulting Head – Digital Product Value Chain & Industry 4.0, Wipro Limited



THE BEST RUN



The context:

# Teamcenter PLM, The Foundation for Digital Tread



# The context

Over **75% of new products fail** to reach markets on time.

Of the 25% of products reaching the markets,  
**2/3<sup>rd</sup> fail to meet their original expectations.**

●  
**Profit & Cost  
Containment  
Pressures**

●  
**Fragmented People,  
Processes, Data &  
Systems**

●  
**Increased Product  
Complexity & Quality  
Product Demands**

●  
**Increased Regulatory  
& Environmental  
Requirements**

Companies are realizing the value of  
**Integrated Digital Product Value Chain**  
powered by  
**Digital PLM & Digital Thread**  
as the enabler to overcome these challenges.



# Product Value Chain & Silo impact



Ideation



Design &  
Development



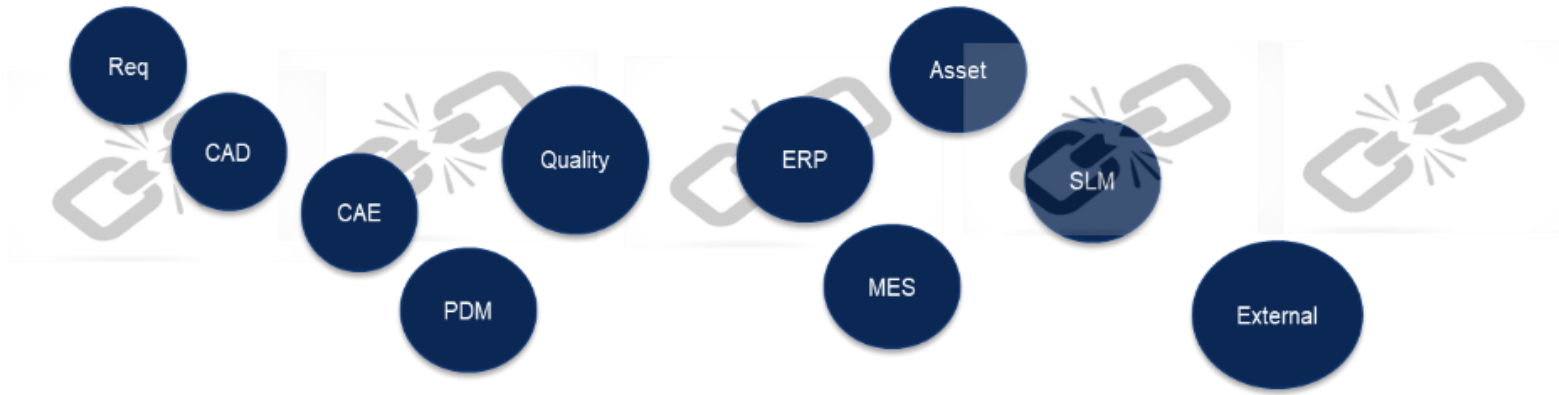
Manufacturing



Service



Dispose



- Throw over the wall approach
- Not connected processes, data & systems
- Broken closed loop systems
- Lack of Requirement visibility & Misunderstanding
- Different tools & data models



- Delay in customer's problem acknowledgement/response
- Increased Cycle Time & Cost
- Quality issue
- No or less Global Collaboration
- No option to generate metrics & dashboards



# Digital Thread in Product Value Chain & Teamcenter Fitment

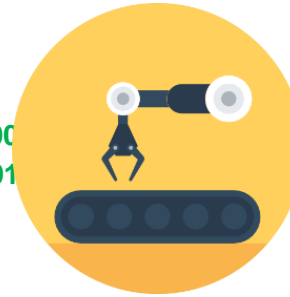
Powered by Wipro's WipACE DPVC Framework



Ideation



Design &  
Development



Manufacturing



Sustainability



Dispose

10001101010 101  
0001101010 10101

1010100001000100  
1010000100010001

10101010101 1001 1  
101010101 1001 101

101010 10100  
1010 1010010

MCAD & CAE

ECAD

Digital Simulation & Validation - Product

Digital Simulation & Validation - Process

Software, System Engg etc..

IOT – gateway to Smart products & Smart Factory

ALM (Software lifecycle)

Manufacturing Operation  
Mgmt (MOM/MES)

SLM (Service Lifecycle)

Enterprise Digital PLM

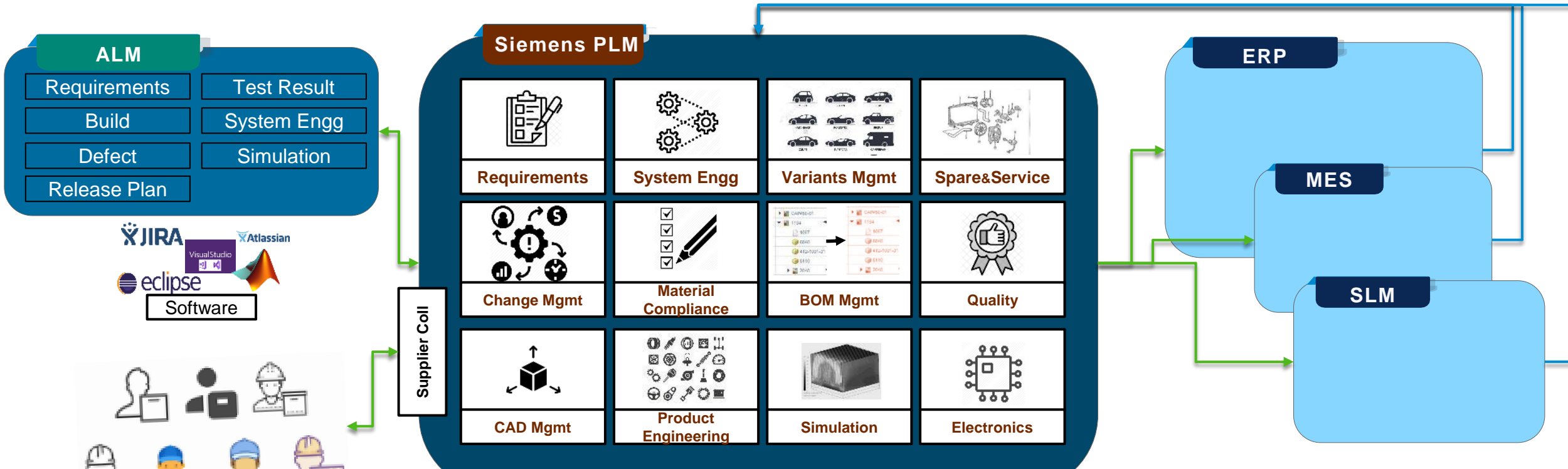
Enterprise Resource Planning (ERP)

**TEAMCENTER** As Foundation for Digital Thread

PCo & PLC

# Integrated Digital Thread using Siemens Teamcenter

Powered by Wipro's WipACE DPVC Framework



**Digital Thread = Connected Data & Connected Processes**



**Connected System**



**...resulting in seamless evolution & exchange of product information across value chain in a closed loop manner and enabling increased collaboration & innovation**



**Enterprise level collaboration & innovation powered by Digital PLM & Digital Thread**

**Enabling faster Time-to-Quality & Time-to-Market by 30-50% in the Digital & Industry 4.0 era**

# Case Study





# Digitalization of Product Value Chain for a Global Whitegoods manufacturer using Teamcenter

7 Product lines and 300+ active product variants

Enabled Collaborative Product Development at 36 Sites across 116 countries using Teamcenter

Accelerated product development and faster time to market by 30%

Reduction in design iteration by 20%

Transformed after market support by establishing Product Twin through IoT



# PLM Strategy, Blueprinting, Implementation and Global Rollout

*Enabling global & unified Product Design, Development and Launch/Commercialization processes*

## OPPORTUNITY

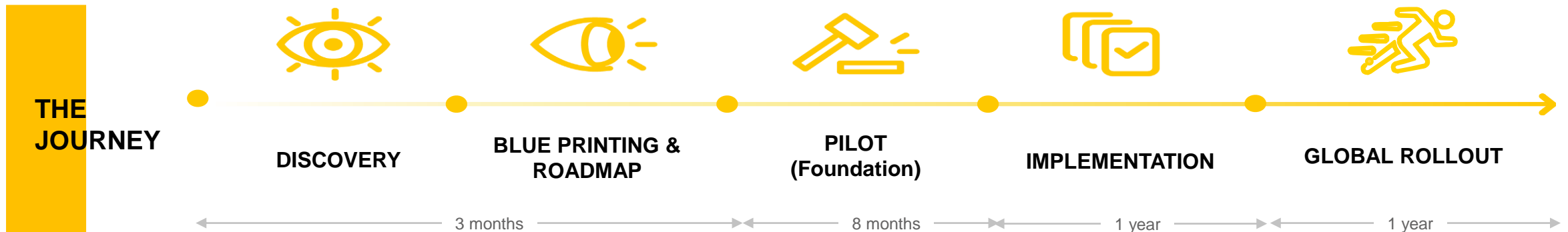
- Need for a global unified PLM to address modularization challenges and global collaboration needs
- 7 Product lines, 300+ active product variants – Spread across 36 sites across 16 countries
- 4500+ PLM users - Designers 1000+ , Doc Authors 2000+, Viewers 1500+
- Global PLM for unified Product Development processes - End-to-End PLM Implementation on Teamcenter UA Platform
- Huge Legacy data in desperate system accumulated through mergers & acquisition

## SOLUTION

- Consulting & implementation of PLM solution to drive product modularization concepts
- Business requirements analysis through Consolidation and streamlining of the design processes of various plants
- Rapid blueprinting & pilot realization
- Defining a unified Change Management Process and CAD/EBOM/MBOM Mgmt.
- Establish Digital manufacturing solutions built on PLM
- Global deployment involving site specific data migration & multi language training

## BUSINESS BENEFITS

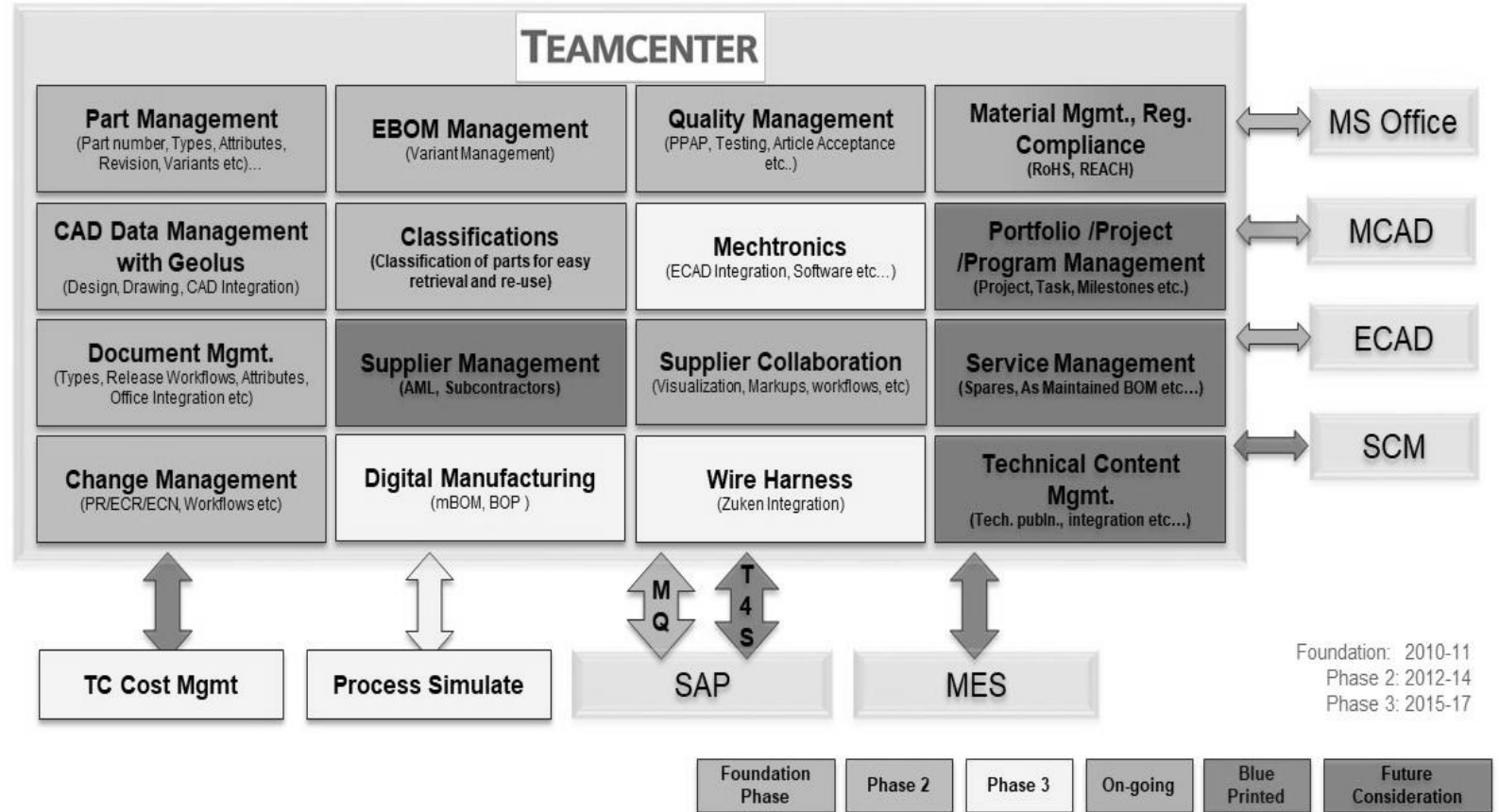
- Enabled global collaboration across R&D and External partners/suppliers
- Implemented common Engineering Change process
- Secured and controlled storage of design data
- Enabled seamless process for managing eBOM → mBOM → BOP
- Enabled journey towards Industrie 4.0 initiative through Digital Manufacturing
- ~500,000 Parts/BOMs/Docs migrated and migration ongoing



# Key Capabilities & High-Level Architecture

## Key Business Capabilities enabled

- CAD Data Management
- Part & Document Management
- Variant Management
- BOM Management
- Change Management
- Quality Management
- Electronics & Electrical Data Mgmt.
- ERP Integration
- Supplier Collaboration
- Material Management
- MBOM & BOP Management
- Digital Simulation & Validation



# About Wipro





# Wipro's Digital Product Value Chain & PLM Practice

200+  
customers

4000+  
practitioners

25+  
years as dedicated Practice

40+  
countries

Top 3  
globally ranked  
service provider

With over **100+ global end-to-end digital transformations**, Wipro is fully equipped and ready to enable companies **optimize and transform** the way products are designed, developed & launched to market in the Industry 4.0 era

## What we do

**NPD & NPI Transformation & Optimization in the Digital & Industry 4.0 era:** With Wipro's Digital Product Value Chain and Digital Thread Model and our strategic acquisition of ITI (a niche interoperability solution provider), we help companies optimize, harmonize and transform the product design, development, manufacturing, launch and sustenance processes, data and systems by implementing digital technologies in CAX (CAD, CAE), xLM (ALM, PLM & SLM), 3D Printing, Digital Twin, MOM, IIoT, AR/VR, AI and ML to become Digital & Industry 4.0 enterprises and improve NPD and NPI performance by 20-50%.

**Digital Manufacturing & Plant Lifecycle Management:** We help companies integrate all aspects of manufacturing and plant operations, starting with Plant Instrumentation, Operation and Supervision, implementation of MOM / LIMS / EBR solutions and integrating them with enterprise-wide systems such as PLM and ERP.

**AI-driven Data Platform Engineering:** Build and deploy platforms by leveraging AI and Machine Learning technologies and tools; platform that can serve and orchestrate end-to-end product value chain leveraging AI models and model lifecycle management. Smart Factory Applications and Low Latency Messaging Platforms.



# Thank you.

**Sankar Natarajan**

Global Consulting Head – Digital Product Value Chain & Industry 4.0

Wipro Limited

[www.wipro.com](http://www.wipro.com)

[Sankar.Natarajan1@wipro.com](mailto:Sankar.Natarajan1@wipro.com)



# Agenda

- 1 A Dream Team brings unique value

---
- 2 Enabling Digitalization of Product Value Chain

---
- 3 **Next Generation Integration**

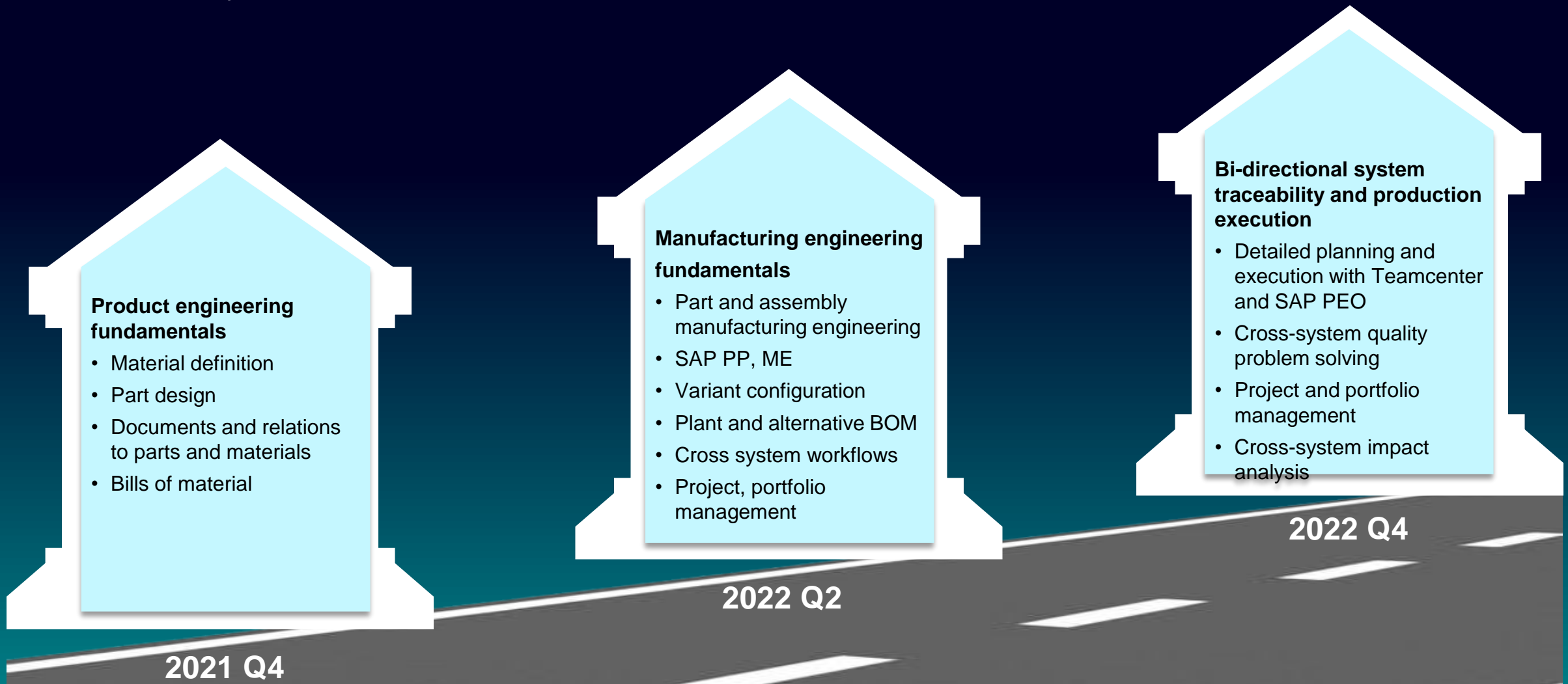
---





# Siemens – SAP partnership

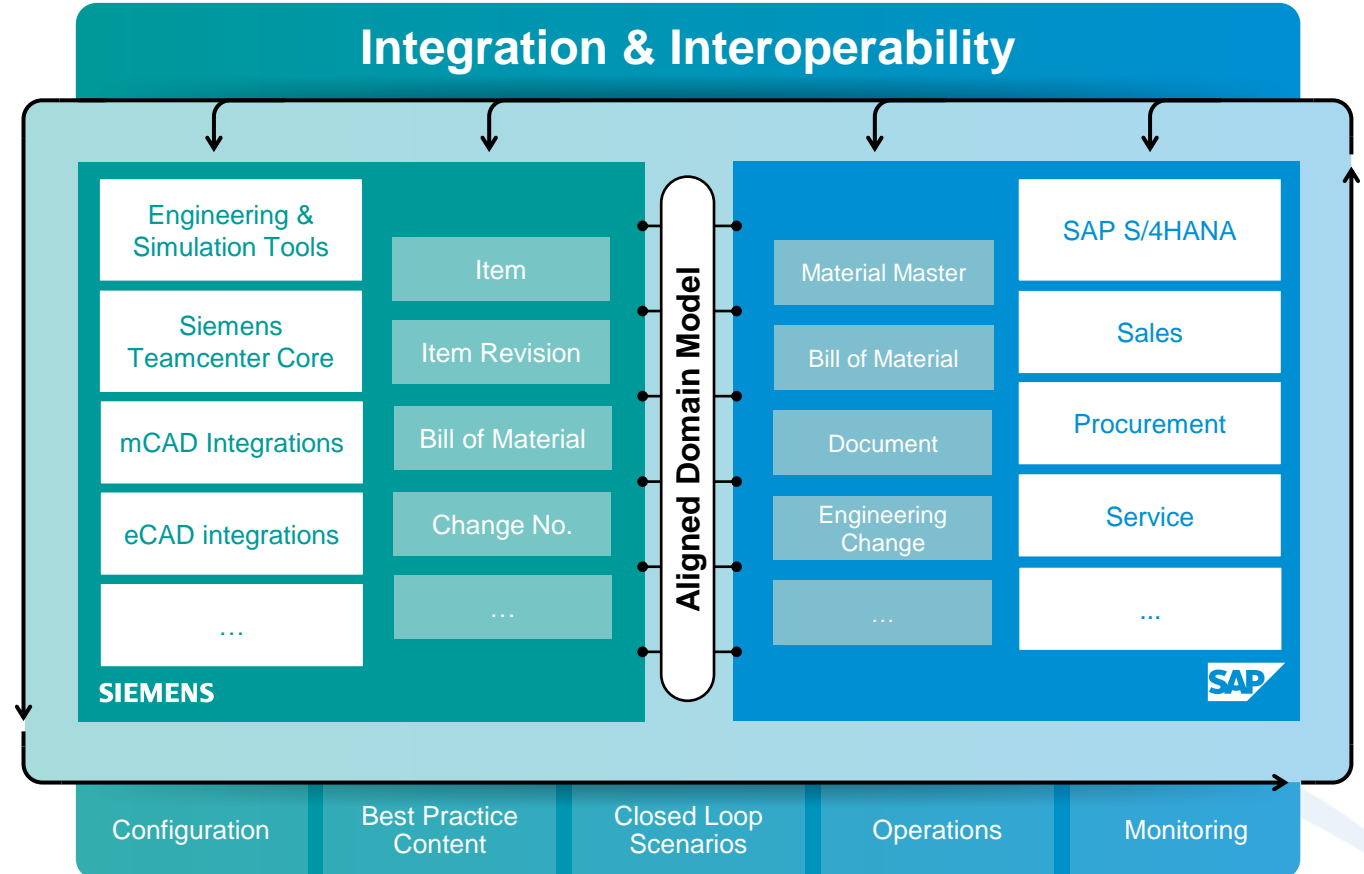
## The roadmap for foundation value



# The foundation of our vision: Best in class integration and interoperability

## One joint integration solution which:

- Builds on SAP and Siemens know-how
- Aligns on a common domain model
- Comes with proven integrations
- Provides access to data across solutions
- Supports seamless setup and operation
- Offers existing customers a path
- Supports on-premise, hybrid, and cloud



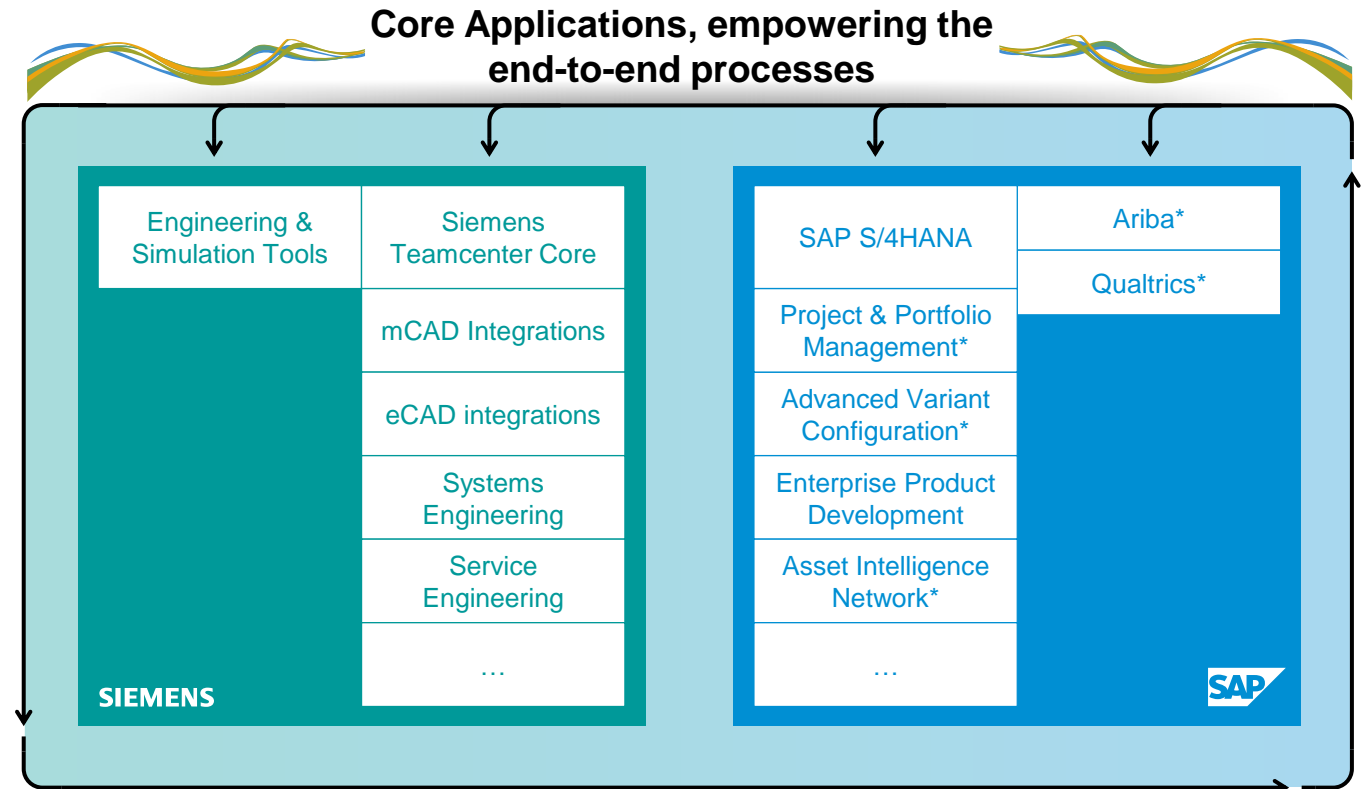
# Characteristics of the planned integration solution

## Guiding principles:

- Focus on integrated **end-to-end processes**
- Outstanding **performance, robustness, and security**
- Deliver **traceability**, federation, and relations
- **Common concepts** and artifacts wherever possible

## User experience:

- **“Live” product data:** Access to master product data at any time in the preferred environment
- **Flexibility on process execution:** Initiating product development process and workflow without system boundaries
- **Insights “Across the Border”:** Live federated data sharing for fast and efficient decision making
- **Simple processes** of buying, support, deployment; Common and highly automated installation and operation
- **First realization** of a true digital thread across product development and business leading to a richer **digital twin**





# SAP Teamcenter by Siemens Integration to S4/HANA (TCI)

## Integration Features and Benefits



### End to End Digital Thread, Enterprise integration

- Bi-Directional integration of Teamcenter with SAP.
- End to End closed loop configuration of business processes.



### Bill of Material Management

- Bi-Directional integration of Bills of Material
- Efficient handover from engineering the manufacture
- Complex Product structure management across systems.



### Performance and Quality

- Simplified architecture to reduce implementation and operational costs.
- Efficient handling of error without impacting data transfer or stopping transactions
- Bi-directional authoring



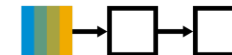
### Integrated Change Management

- Integrates Engineering, manufacturing or operational changes with a common closed loop process.
- Smooth and effective impact analysis across systems



### Integrated Document Management

- Bi-Directional document exchange to support end to end process.
- Document associativity is maintained between systems.



### Workflow

- Automate any process
- Controlled approval
- Triggered Data Transfer and Integration
- Verify transfer and conversion

# SAP Teamcenter Integration to S4/HANA

## Engineering Configuration in Teamcenter, Sales Configuration in SAP

Engineering BOM with Geometric Data and Configurations, Configurator Rules

## Cross System Manufacturing Planning and Execution

PEO Integration, Engineering Versioned BOM, Snapshots, Rough and Shop floor Routings

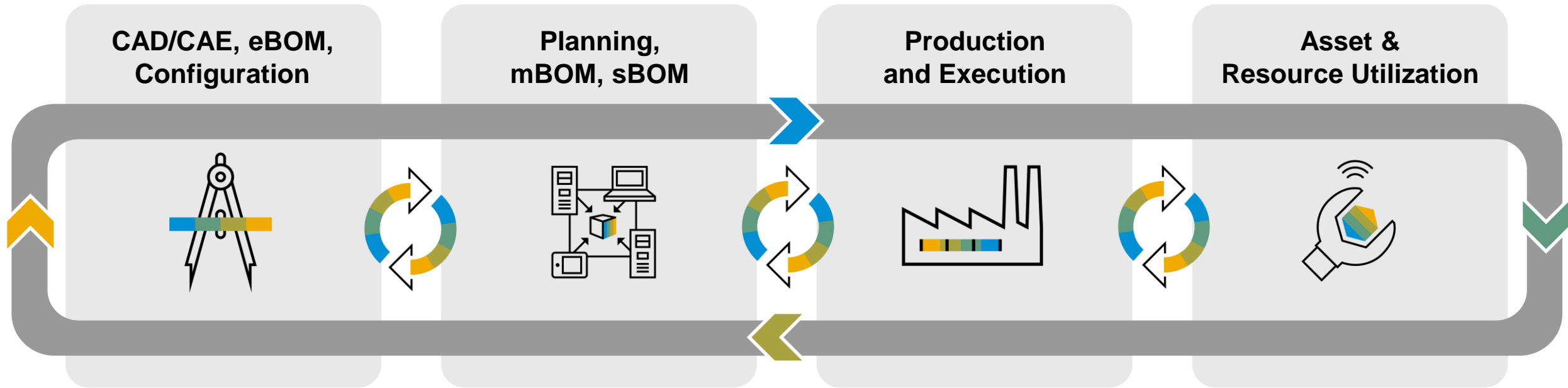
## Cross System Workflows, Impact Analysis, Project and Portfolio Management

## SAP Multi-tenant Cloud & Teamcenter Cloud

## Better Performance through Batching and Parallelization, Single Sign-on

# The Digital Thread that ties everything together!

From product to asset lifecycle management



## Single Product Master

Pervasive product information  
federated across the entire  
product lifecycle

## Transparent Change

Visibility to all stakeholders to  
manage the impact of change  
from workgroup to enterprise

## Seamless Digital Thread

Pervasive product information  
federated across the entire  
product lifecycle

# Q & A





# Thank you.