

Making the Move to the SAP S/4HANA Cloud

**Turn Insights into Action
with Embedded
Analytics**

Lorraine Howell, Vice President,
Innovation and Continuous
Improvement, Illumiti

There are
only 2
reasons for
making the
move to SAP
S/4HANA
Cloud



One:
The need to
move to a
modern
technology
platform

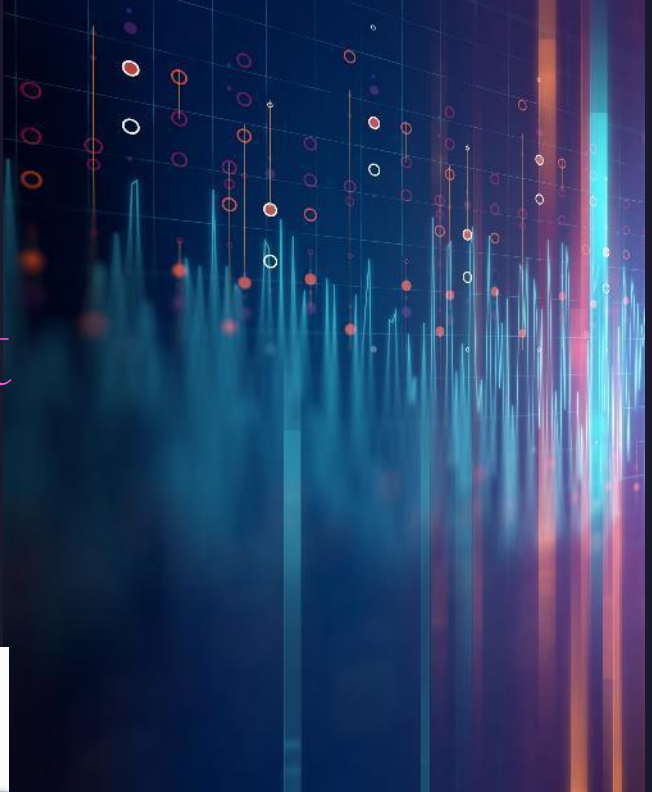
An abstract graphic on the left side of the slide features a network of white dots connected by thin white lines, set against a dark blue background with a subtle bokeh effect of light blue circles.

Allowing companies to
grow,
transform,
automate,
leverage new technologies,
and to become attractive
and easy to use



Two: The Access to Embedded Analytics

Providing real-time, exception-based management of the business





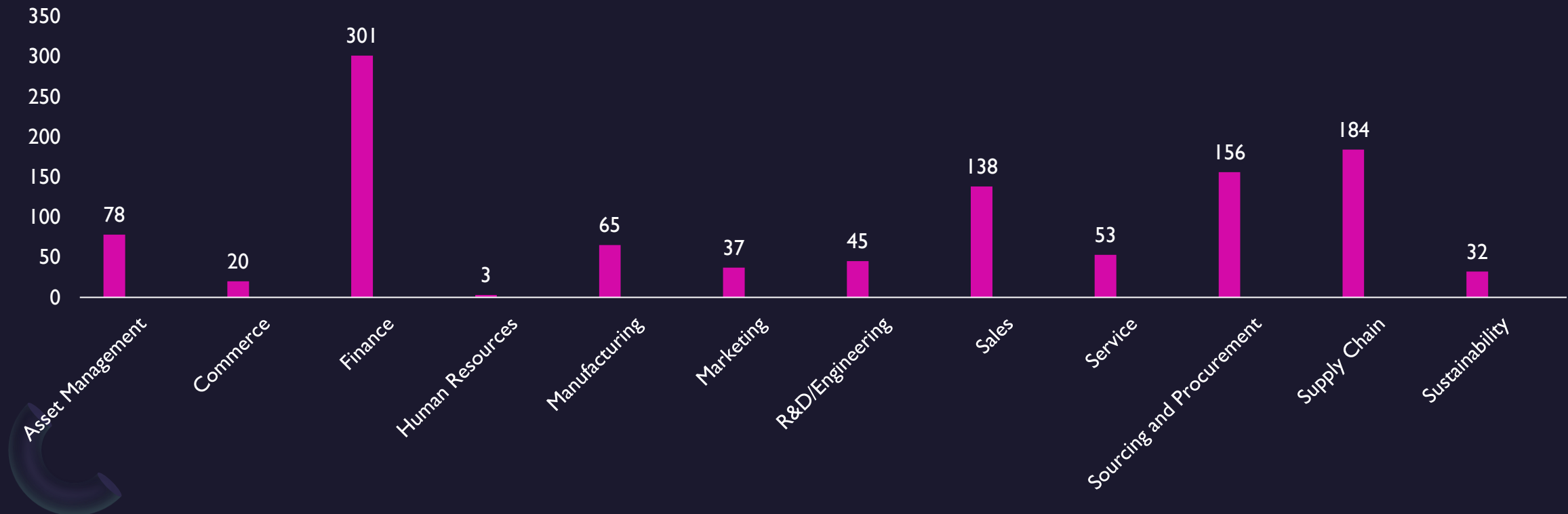
**Real-Time Exception-
Based Management**

Embedded Analytics

SAP S/4HANA embedded analytics – Overview

Fiori Applications

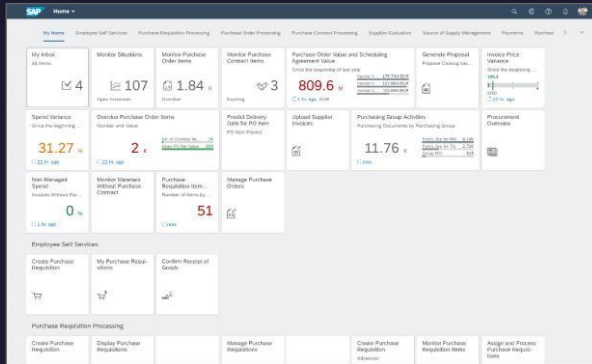
> 1,000 Analytical Apps Out-of-the-Box



SAP S/4HANA embedded analytics – Overview

Capabilities for the business user

Smart Business KPIs



- KPI monitoring on SAP Fiori launchpad
- Drill-down into further analytical or transactional apps
- Save personal variants

SAP S/4HANA embedded analytics – Overview

What's to like about the Fiori Analytical Applications?

Predefined KPIs and Reports

- Details in the Fiori Library

Real-Time Analytics

Exception-Based

Changeable Default Variables e.g. Currency

Drilldown to Transactional Details

- Allowing Root-Cause Analyses

Extensibility

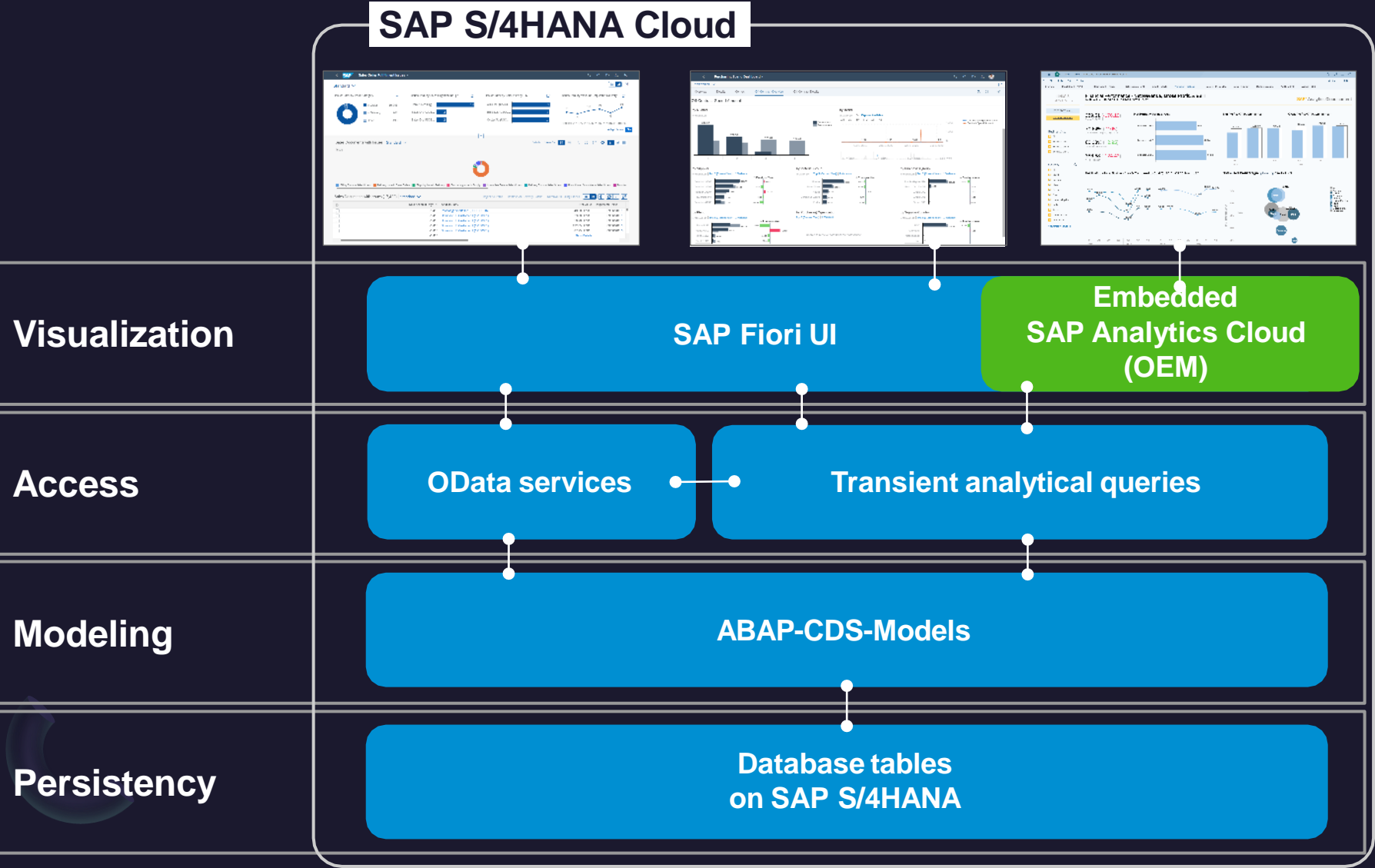
What's to like about the Fiori Analytical Applications?

Extensibility



SAP S/4HANA embedded analytics – Overview

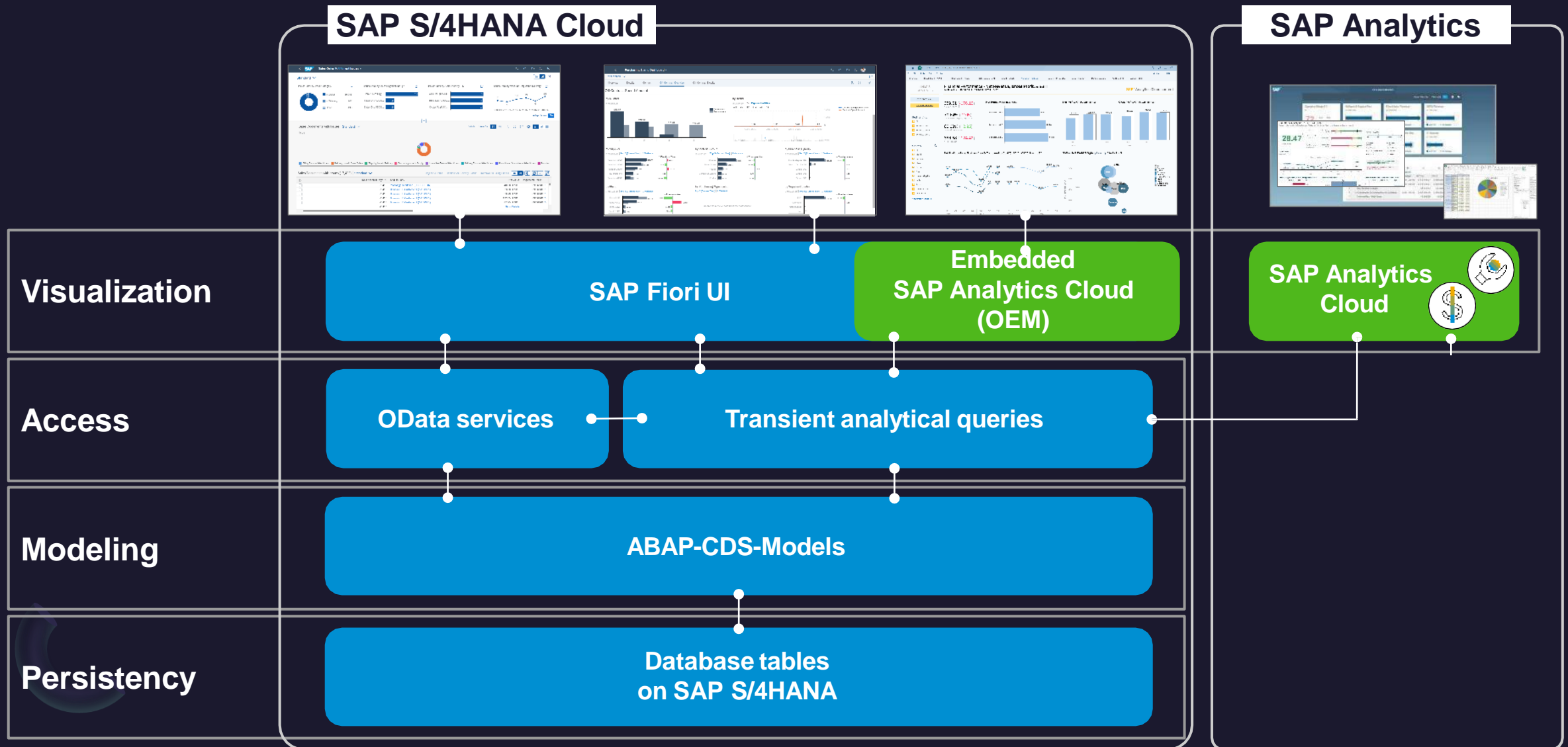
High-level architecture



No external data warehouse is required for reporting on SAP S/4HANA Data

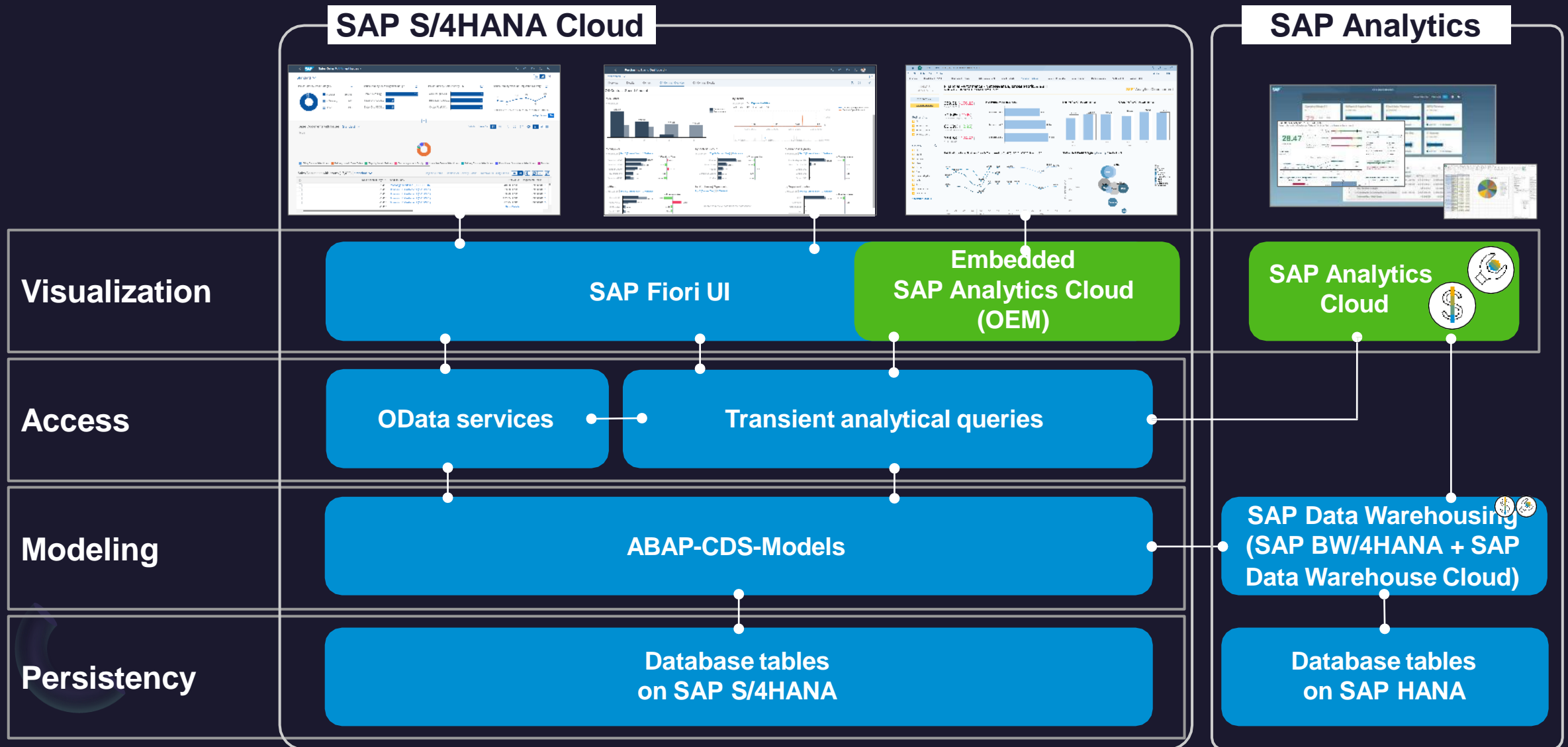
SAP S/4HANA embedded analytics – Overview

High-level architecture



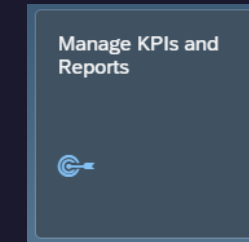
SAP S/4HANA embedded analytics – Overview

High-level architecture



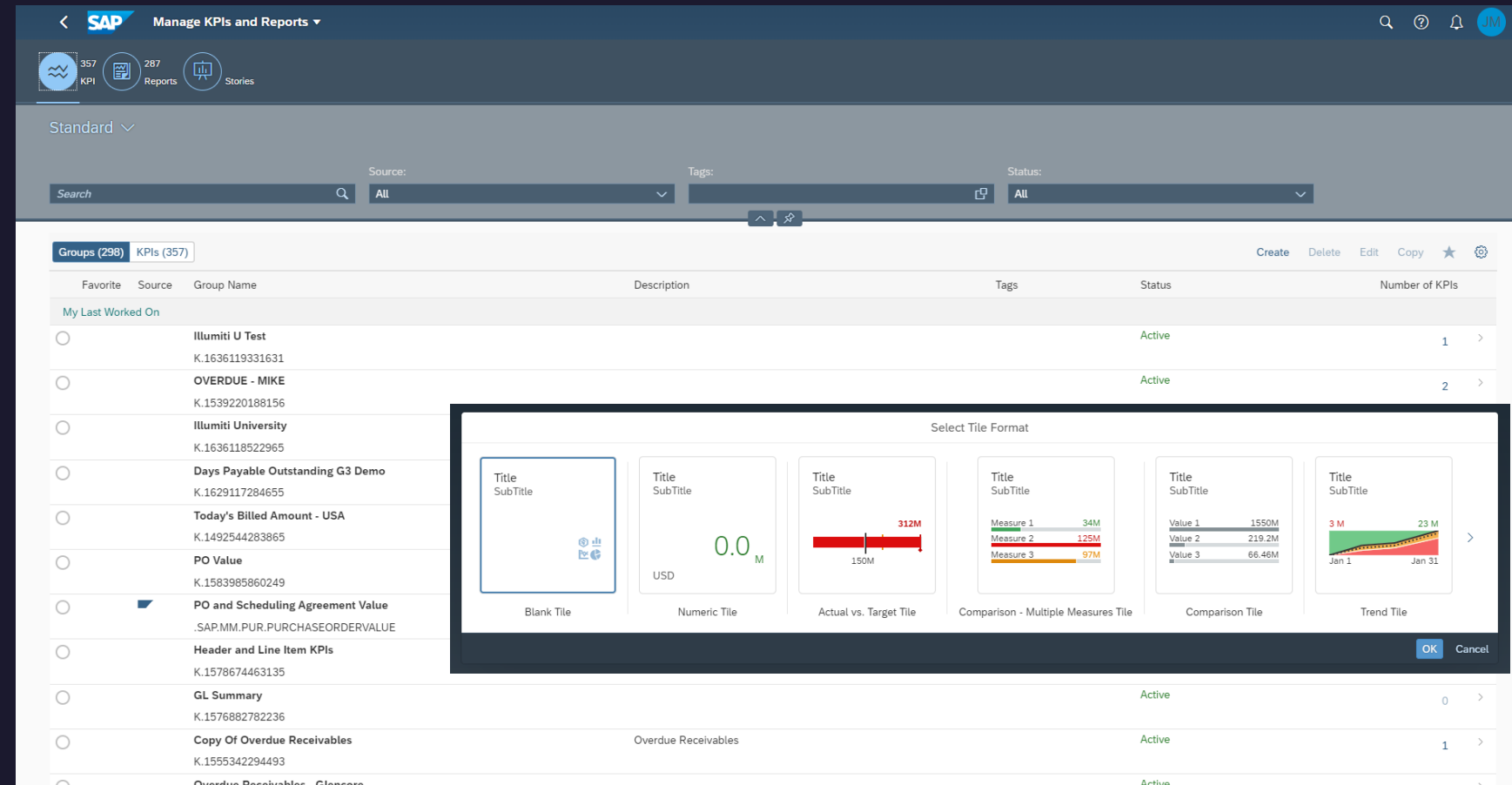
SAP S/4HANA embedded analytics – Overview

Extensibility



High-Level Capabilities:

- Based on CDS views / OData services, configure KPIs and Reports
- Publish KPIs and Reports to business catalogs, thus making them available for users
- Configure details of the drill down and appearance of the tile (for KPIs)



The screenshot shows the SAP 'Manage KPIs and Reports' interface. At the top, there's a header with the SAP logo and navigation icons. Below the header, there's a search bar and filters for Source, Tags, and Status. The main content area displays a list of KPIs under the 'KPIs (357)' tab. A modal window titled 'Select Tile Format' is open, showing various tile formats: Blank Tile, Numeric Tile, Actual vs. Target Tile, Comparison - Multiple Measures Tile, Comparison Tile, and Trend Tile. The list of KPIs includes details like Favorite, Source, Group Name, Description, Tags, Status, and Number of KPIs.

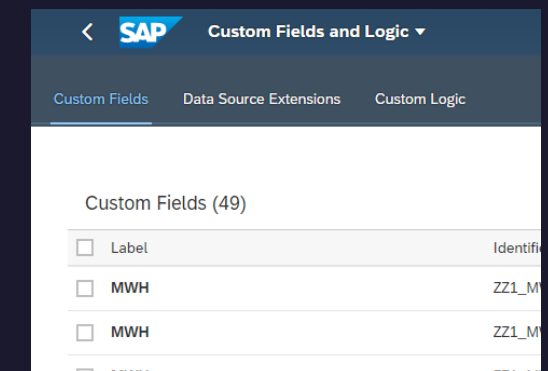
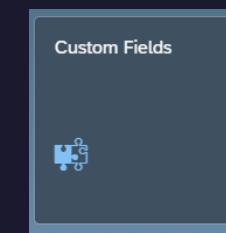
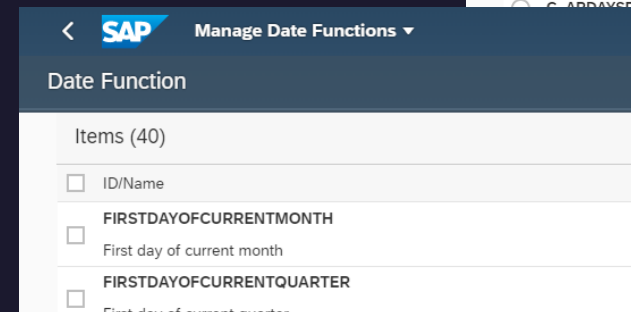
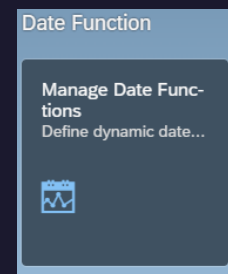
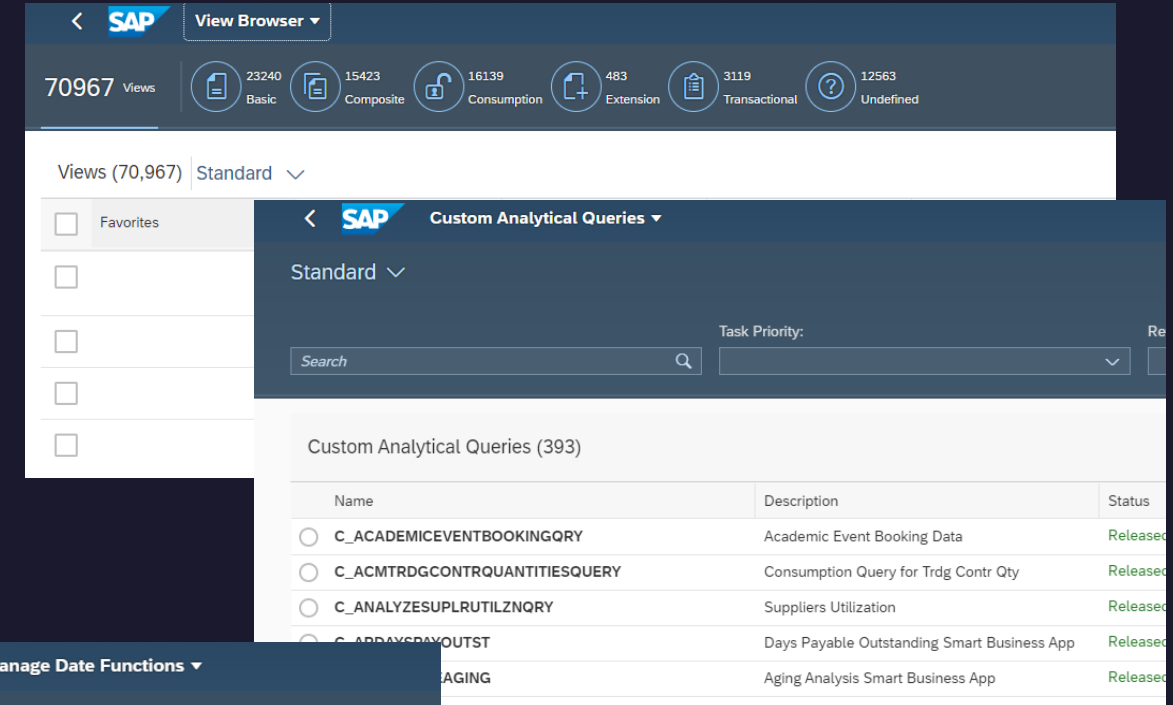
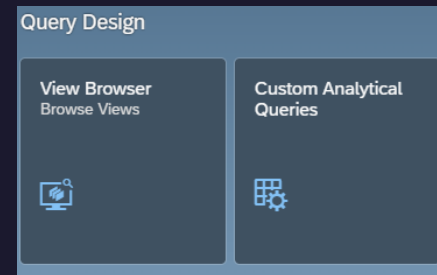
Favorite	Source	Group Name	Description	Tags	Status	Number of KPIs
<input type="radio"/>		Illumiti U Test	K.1636119331631		Active	1
<input type="radio"/>		OVERDUE - MIKE	K.1539220188156		Active	2
<input type="radio"/>		Illumiti University	K.1636118522965			
<input type="radio"/>		Days Payable Outstanding G3 Demo	K.1629117284655			
<input type="radio"/>		Today's Billed Amount - USA	K.1492544283865			
<input type="radio"/>		PO Value	K.1583985860249			
<input type="radio"/>		PO and Scheduling Agreement Value	.SAP.MM.PUR.PURCHASEORDERVALUE			
<input type="radio"/>		Header and Line Item KPIs	K.1578674463135			
<input type="radio"/>		GL Summary	K.1576882782236		Active	0
<input type="radio"/>		Copy Of Overdue Receivables	Overdue Receivables		Active	1
<input type="radio"/>		Overdue Receivables - Glencore			Active	

SAP S/4HANA embedded analytics – Overview

Extensibility

High-Level Capabilities:

- **View Browser:** Embrace Virtual Data Models
- **Custom Analytical Queries:** Create and Publish Queries
- **Date Functions:** Defines dynamically calculated date ranges relative to a date (“Today”, “Last Day of Previous Quarter”)
- **Custom Fields:** can create your own fields and enhancement implementations to customize applications and their UIs, reports, email templates, and form templates.



SAP S/4HANA embedded analytics – Overview

Rapid Activation of SAP Fiori

Did you know you can turn on your SAP Fiori launchpad, main SAP Fiori features, and all the SAP Business Roles and the related SAP Fiori apps that you want to explore in **less than 1 day**?

1. Task list SAP Fiori - Initial Setup for SAP Fiori Applications in SAP S/4HANA enables the rapid activation and **setup of SAP Fiori launchpad**
2. Task list SAP Fiori - Content activation for SAP Business Roles facilitates the **generation of SAP business roles** for tests in the sandbox system, and **the activation of SAP Fiori apps** based on business roles
3. Task list FLP content activation for FCM simplifies the **generation of customer-defined business roles** and the activation of the corresponding SAP Fiori apps.



Cut and paste in a browser:

- <https://blogs.sap.com/2021/11/03/sap-fiori-for-sap-s-4hana-activate-sap-fiori-in-1-day-or-less-the-video-playlist-and-faq/>
- https://help.sap.com/docs/SAP_FIORI_OVERVIEW/a3a20aacd1484c8a976f71054a3bf860/999528cc1c8844a899ec94b48b2940d4.html
- https://www.sap-press.com/sap-s4hana-embedded-analytics_5226/?utm_source=sappressblog&utm_medium=contentmarketing&utm_campaign=Blogs&utm_term=chapter5&utm_content=2050

SAP S/4HANA embedded analytics – Intelligent Evolution

Leveraging and integrating with the modern platform of SAP S/4HANA

SAP Intelligence Technologies

Data Intelligence (incl. ML)

Intelligent RPA

SAP Edge
Services

Conversational AI

Situation Handling

SAP Internet of
Things

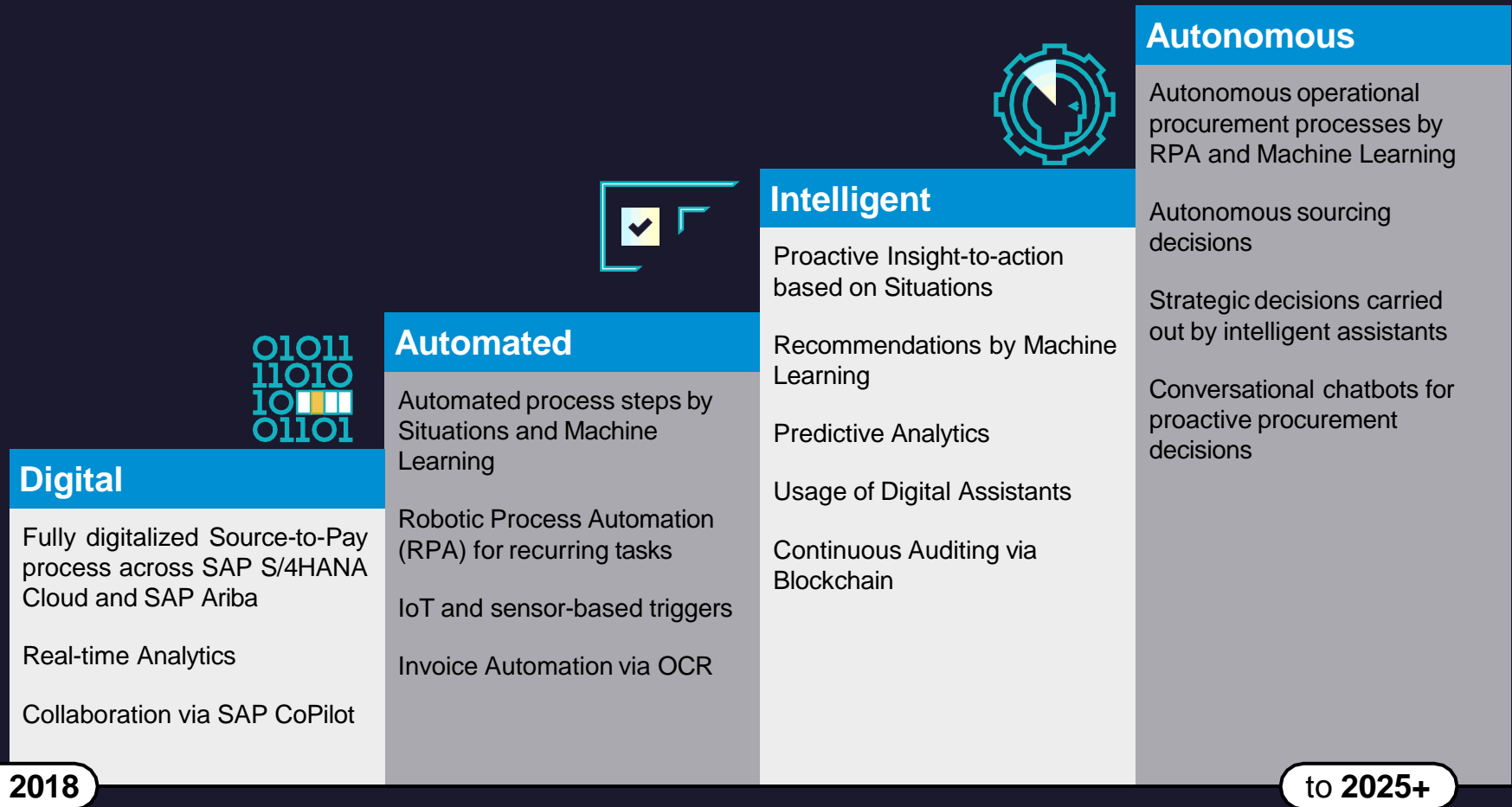
Big Data
Management

Application Data
(e.g. SAP S/4HANA)

A **single digital thread** that integrates all the real-time information, feedback, performance, and data on a product from inception to sunset. Enabling processes to evolve from reactive to predictive.

SAP S/4HANA embedded analytics – Intelligent Evolution

Procurement as example of the evolution from digital to autonomous



SAP S/4HANA embedded analytics – Intelligent Evolution

Machine Learning in SAP S/4HANA Cloud



Typical Machine Learning Business Pattern

Prediction
of future conditions based on past data patterns

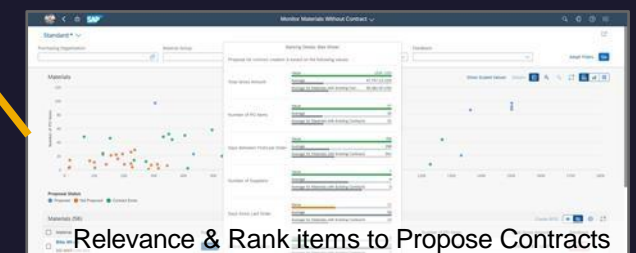
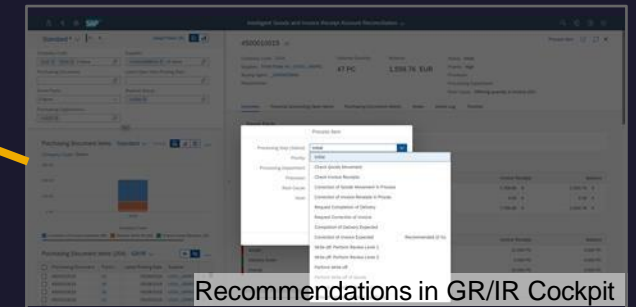
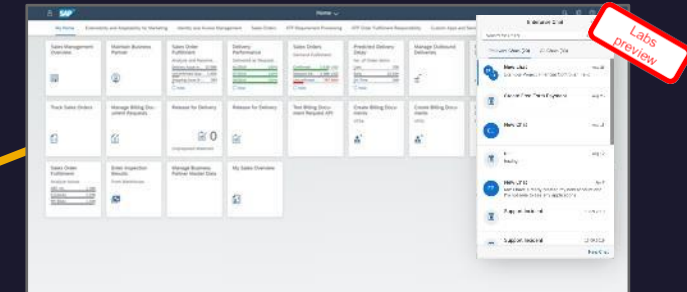
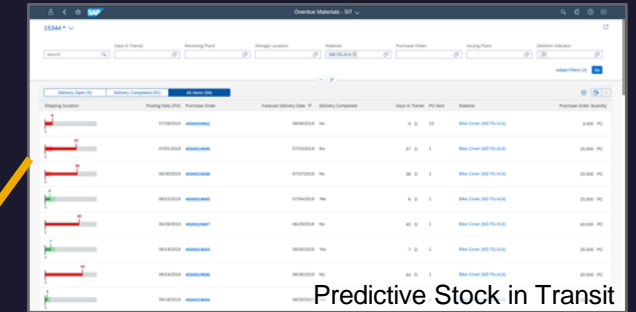
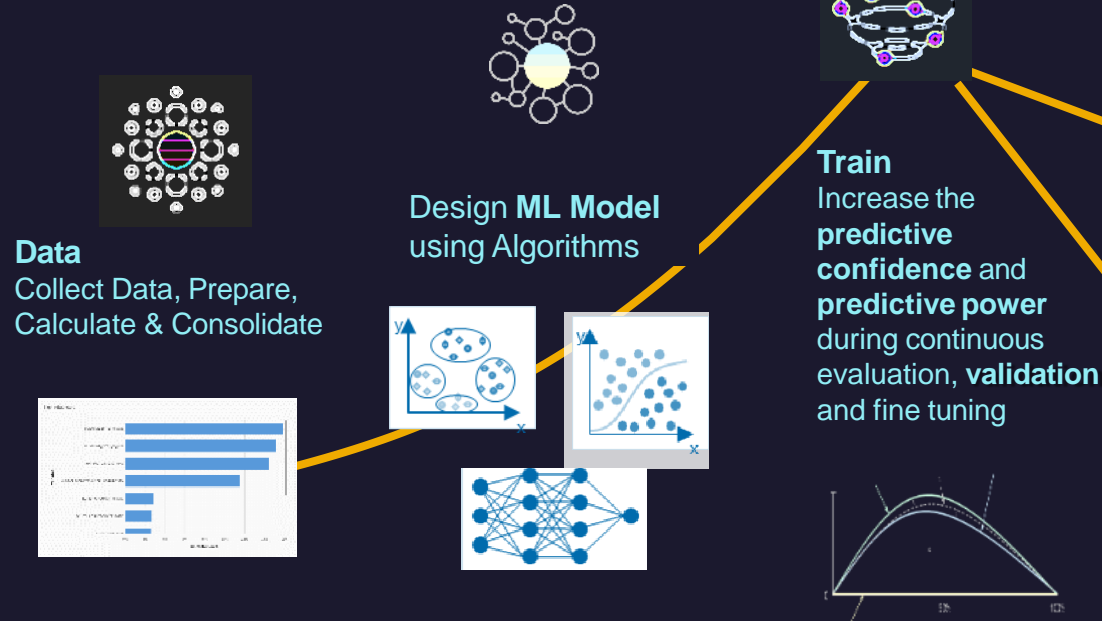
Automation
substitute steps in business processes, which were originally handled by humans

Augmentation
support decisions with proposals of datasets/actions based on current context

Pattern Recognition
provide insights into a dataset and classify recognized patterns

Moderate ML requirements like *Forecasting, Trending, Influencers* using Algorithms like *Regression, Clustering, Classification, Time-Series* etc. can be handled embedded in SAP S/4HANA Cloud.

More complex ML requirements with also **external data** and more complex Algorithms and requirements including also *Image Recognition, Sentimental Analysis, Natural Language Processing* and *Deep Learning* are typically offered **side by side** on SAP Business Technology Platform.





Summary

Moving onto a modern, digital platform with SAP S/4HANA enables companies to leverage superior analytics capabilities and prepares them for growth and transformation via intelligent technologies

Thank You

Lorraine Howell

lhowell@illumiti.com

<https://illumiti.com/>

