

SAP Analytics Solutions Value Map

Michael Moloney

Global Topic Owner

SAP Services and Support



Key Outcomes and Objectives

1. Discover the SAP Value Maps program
2. Deep dive on the SAP Analytics Value Map
3. Learn how to navigate and access the content

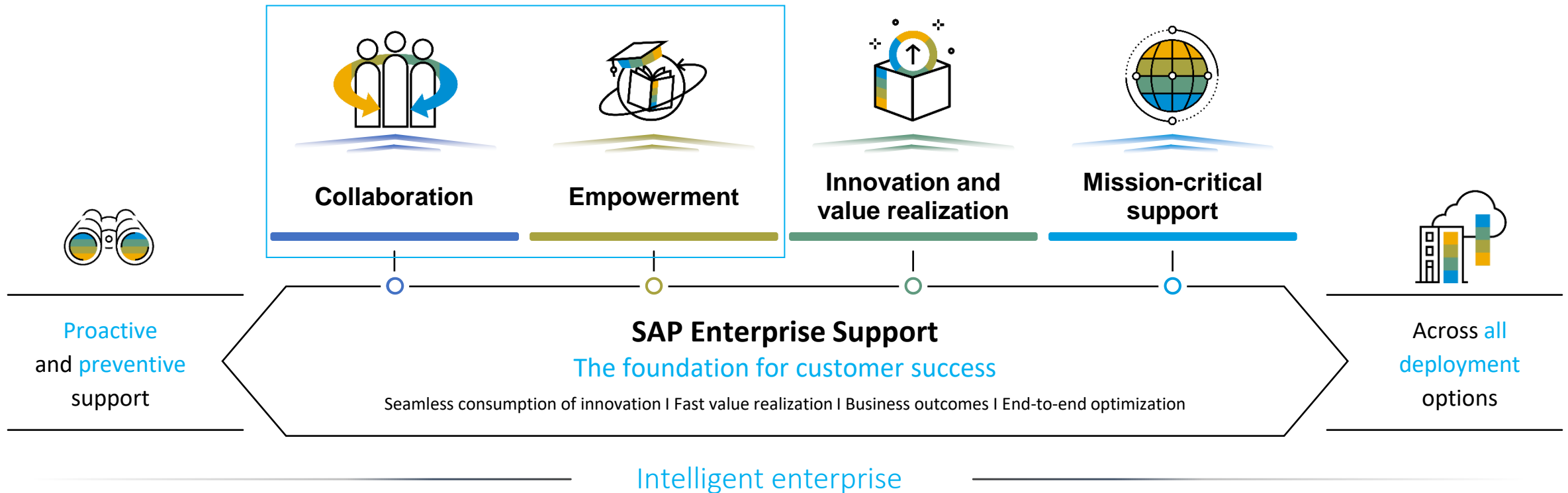
Agenda

- Introduction to SAP Value Maps as a part of SAP Enterprise Support
- How to register for SAP Value Maps
- Focus on SAP Analytics Solutions Value Map
 - Navigating the content
 - Learning Journeys
 - Learning Programs
 - Collaboration
 - Events
- Customer experience – Pennsylvania State University

SAP Enterprise Support

The foundation for continuous customer success

Go to <https://support.sap.com/en/offerings-programs/enterprise-support.html>



SAP Enterprise Support helps customers address the digital skills gap and build the know-how they need to thrive in the digital economy by providing high-impact empowerment and collaboration programs such as **SAP Enterprise Support Academy** and **SAP Enterprise Support value maps**. Utilizing **SAP Learning Hub** as the delivery platform, both programs leverage a learning environment that is scalable, intuitive, social, and collaborative, bringing SAP much closer to understanding and fulfilling your needs.*

SAP Enterprise Support Value Maps

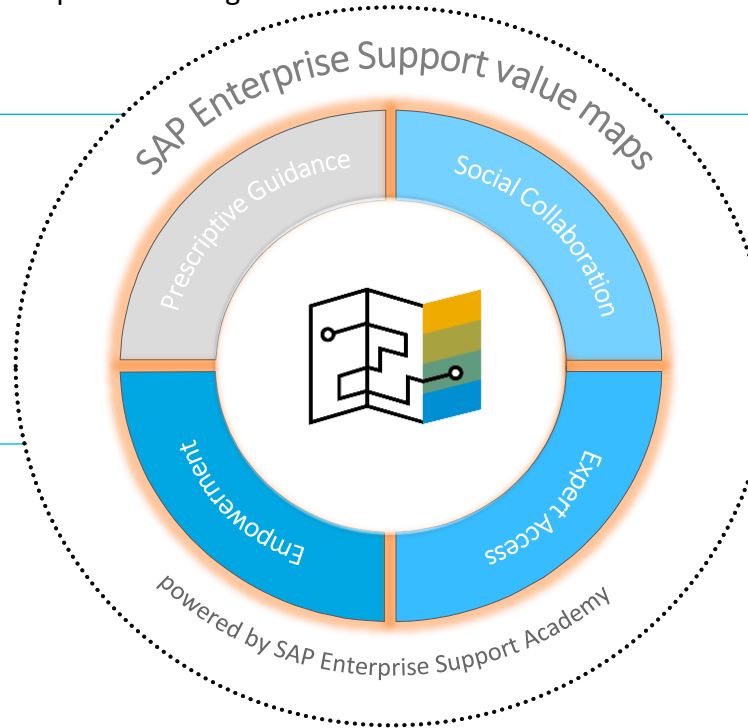
SAP Enterprise Support value maps – an empowerment and support program, which leads you through the knowledge, skills, and services – available from Enterprise Support - to address your business challenges. Value maps provide direct access to SAP experts, collaboration forums, high-impact learning, and prescriptive guidance, to help you achieve meaningful results and unlock new potential for growth.

Prescriptive Guidance

Structured content enables guided journey, simplification, and accelerated consumption of needed enablement content across the entire lifecycle.

Empowerment

Interactive learning formats to empower you with the knowledge and skills for realizing your deployment strategy.



Social Collaboration

Collaboration forums allow you to get guidance and exchange ideas, and best practices with SAP experts and peers.

Expert Access

Access to SAP experts and industry peers for professional advice, best practices, business insight, and technology know-how.

Available SAP Enterprise Support value maps

- [SAP S/4HANA](#)
- [SAP S/4HANA Cloud](#)
- [SAP S/4HANA Cloud, private edition](#)
- [SAP Business Technology Platform](#)
- [SAP SuccessFactors](#)
- [SAP Analytics Solutions](#)
- [SAP Customer Experience solutions](#)
- [SAP Ariba](#)
- [Application Lifecycle Management](#)
- [SAP Business Process Intelligence](#)
- [Data Volume Management](#)
- [Business Process Improvement](#)
- [Security](#)
- [SAP Jam Collaboration](#)

SAP Analytics Solutions Value Map

- SAP Analytics solutions transform data into information. They are mission-critical solutions that help organizations make decisions about the way they run their business. This value map is intended to help customers adopt and run their SAP Analytics solutions effectively with optimal performance.



Discover

and the SAP Analytics strategy and roadmap, and overcome challenges with solution adoption



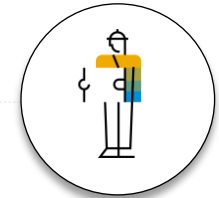
Consume

the SAP Enterprise Support portfolio for SAP Analytics Cloud, including remote services and expert guided sessions



Receive

guidance and empowerment on SAP Data Warehouse Cloud, the out-of-the-box enterprise-ready data warehouse solution



Plan

a new installation or upgrade of an analytics product for, e.g., SAP BusinessObjects Business Intelligence platform, SAP Lumira etc.



Get

assistance with recurring performance issues or information delivery (reports, dashboards/etc.) failures



Transition

from older versions of SAP BW to the latest SAP BW/4HANA release, and discover the associated SAP HANA based modeling tools



Find

guidance and best practices regarding SAP S/4HANA embedded analytics



Integrate

Solutions such as SAP Analytics Cloud with SAP S/4HANA embedded analytics

SAP Analytics Solutions Value Map

Benefits

- Receive best practices and implementation guidance for SAP Analytics Cloud, Digital Boardroom and Planning.
- Learn about SAP S/4HANA embedded analytics and how to integrate these various reporting options into your analytics landscape
- Receive assistance and support to optimize the end to end performance of your analytics stories in SAP Analytics Cloud
- Gain a better understanding of the Fiori analytical apps and embedded reporting options in SAP S/4HANA and S/4HANA Cloud.
- Safeguard major milestones such as SBOP BI platform implementations or upgrade projects
- Empower your organization to maximize SBOP BI platform solution adoption and develop hybrid reporting options with SAP Analytics Cloud.
- Move to SAP BW/4HANA and safeguard your system conversion
- Discover the features and functionalities of SAP Data Warehouse Cloud and understand how it fits into the SAP data warehousing and analytics strategy.
- Maintain the stability of your SBOP BI Platform environment and tune for optimal performance



SAP Enterprise Support Value Maps

How to register and access value maps



SAP Support Portal Home / Offerings & Programs / SAP Enterprise Support / SAP Enterprise Support Academy
Value Maps

SAP Enterprise Support Value Maps

SAP Enterprise Support Value Maps – an empowerment and support program, which leads you through the knowledge, skills, and services needed to address business challenges and adopt intelligent technologies. Value maps provide direct access to SAP experts, collaboration forums, high-impact learning, and prescriptive guidance, to help you achieve meaningful results and unlock new potential for growth.



Your Benefits

- ✓ Achieve deployment and operational goals with prescriptive guidance
- ✓ Advance employee skill level with interactive learning formats
- ✓ Maximize the value of your SAP software
- ✓ Reduce training expenditures
- ✓ Access to SAP experts and industry peers for advice and recommendations
- ✓ Stay informed with latest news and releases
- ✓ Attend virtual events with leading specialists

Request access to SAP Learning Hub, edition for SAP Enterprise Support. Watch [the video](#) and refer to our [tutorial](#) to learn how to sign up and use the hub. If you are already registered you should use 'Access Value Maps' button.

Access SAP Enterprise Support Value Maps Learning Room platform. If you reach the SAP Learning Hub login page, please login and click on [Access Value Maps](#) again.

Step 1

Sign Up



Step 2

Access Value Maps



SAP Enterprise Support Value Maps Learning Room

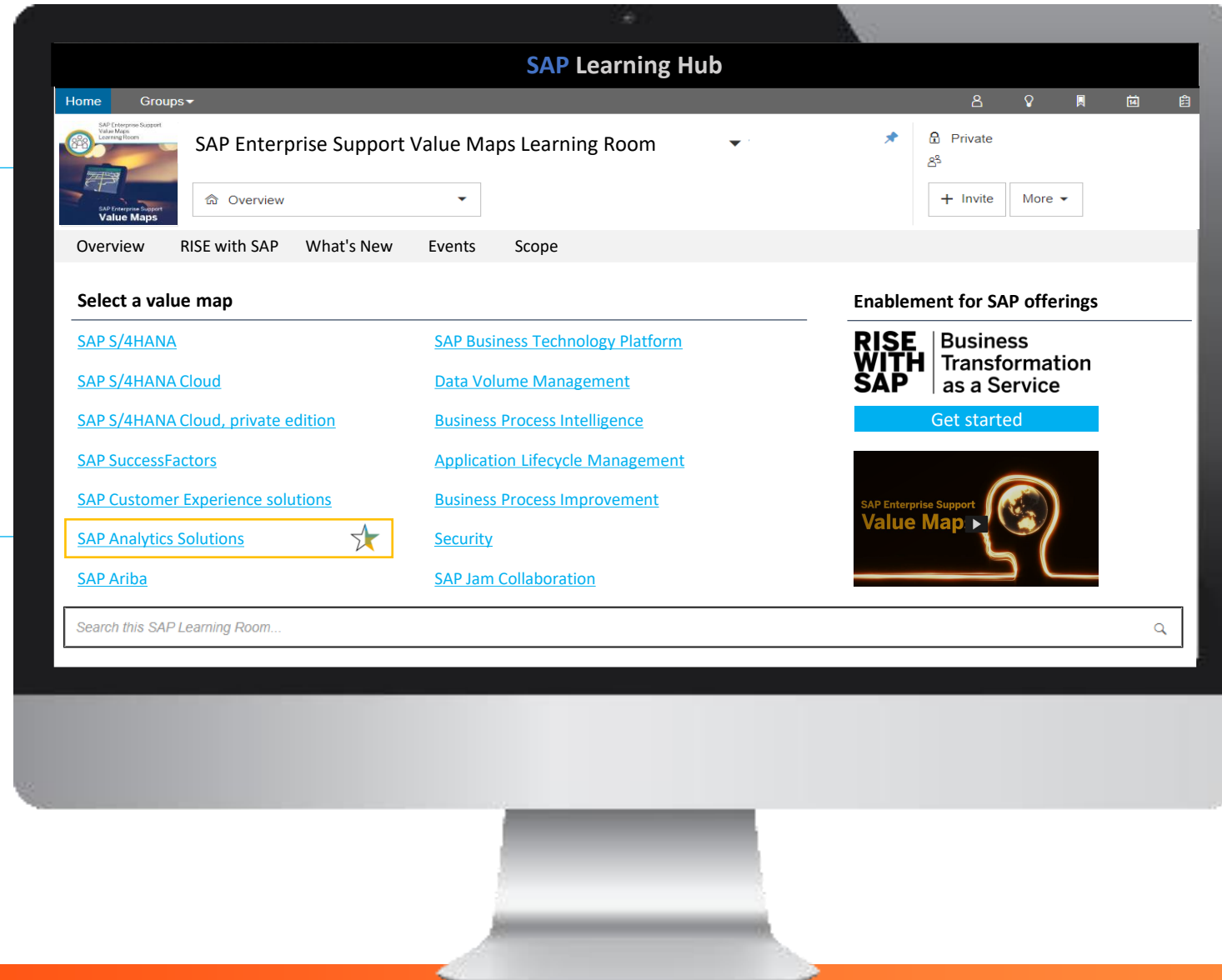
Explore program portfolio



Get started with the main value maps group

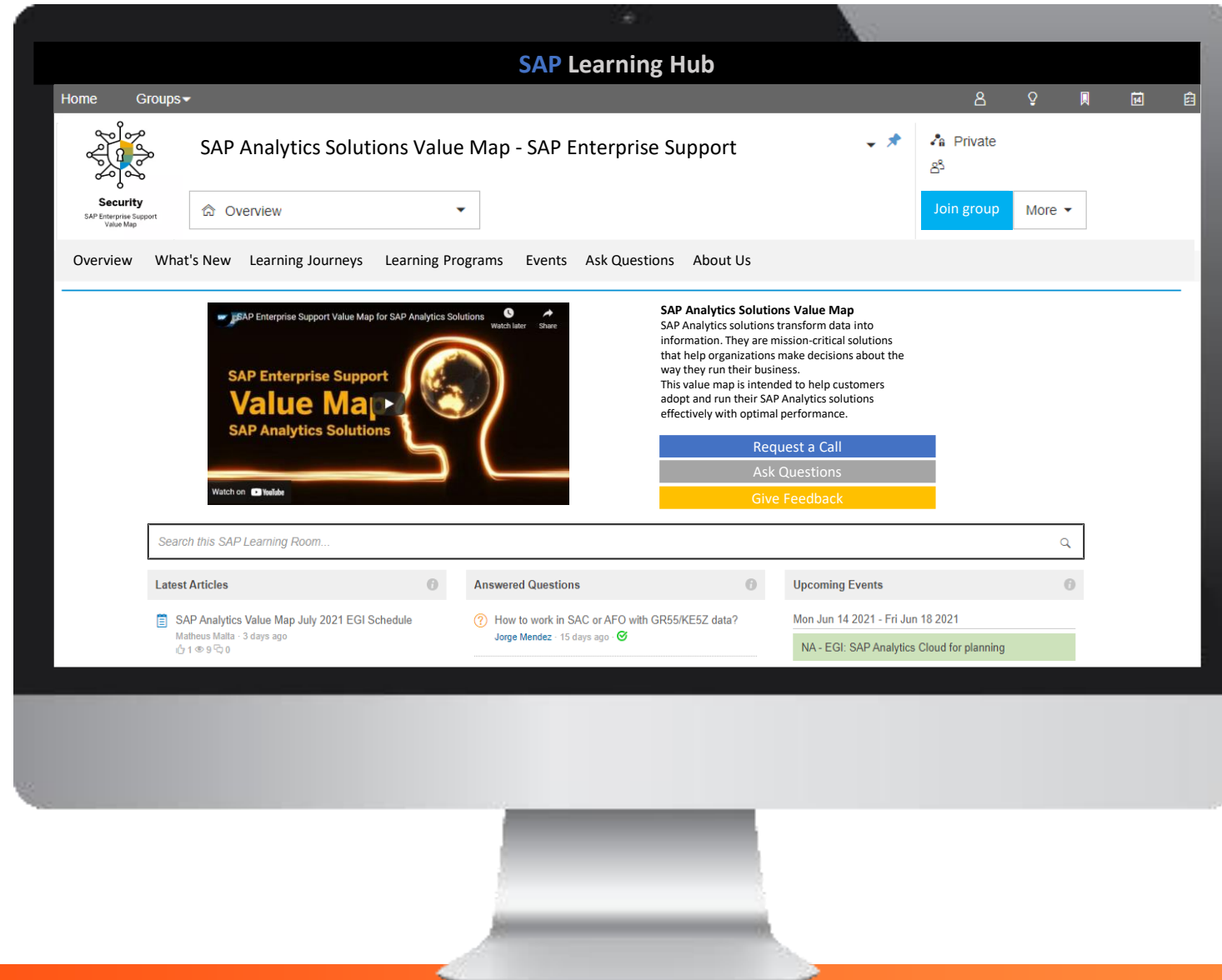


Select the value map or offering of your interest



SAP Enterprise Support Value Map for SAP Analytics Solutions

Overview page



Join the group to become a member



Request a call to get personalized guidance

SAP Enterprise Support Value Map for SAP Analytics Solutions

Learning Assets

SAP Analytics Cloud

SAP Analytics Cloud solution combines business intelligence, augmented and predictive analytics, and planning capabilities into one cloud environment.

[Explore learning assets >>](#)

SAP BusinessObjects

Learn how to manage and safeguard your SAP Business Objects BI Platform and SAP Lumira software.

[Explore learning assets >>](#)

SAP S/4HANA analytics

Understand SAP S/4HANA embedded analytics tools, features and architecture and get started using them.

[Explore learning assets >>](#)

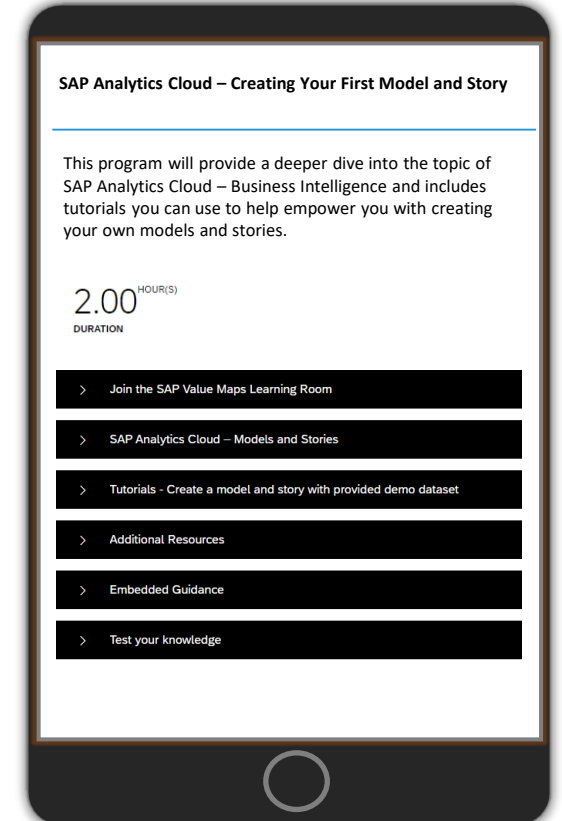
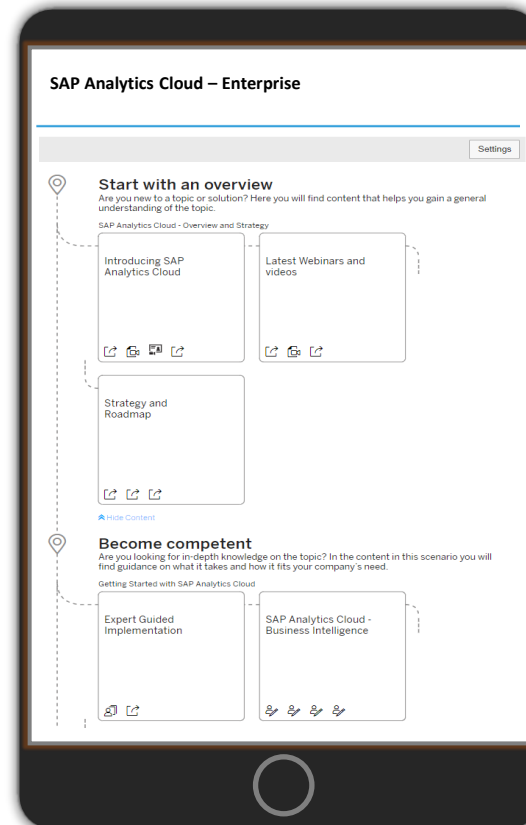
Data Warehousing

Make data-driven decisions based on real-time data by establishing a single source of truth for your organization

[Explore learning assets >>](#)

A **learning program** will guide you through a set of expertly chosen assets, and tools in a sequential and interactive format to empower you to achieve the defined outcome.

A **learning journey** will help you complete your learning and empowerment path by exploring, filtering, and accessing a curated set of offerings and learning assets.



SAP Enterprise Support Value Map for SAP Analytics Solutions

Quick wins

A [learning program](#) will guide you through a set of expertly chosen SAP Enterprise Support offerings, assets, and tools in a sequential and interactive format to empower you to achieve the defined outcome.

SAP Analytics Solutions – Learning Programs

SAP Analytics Cloud

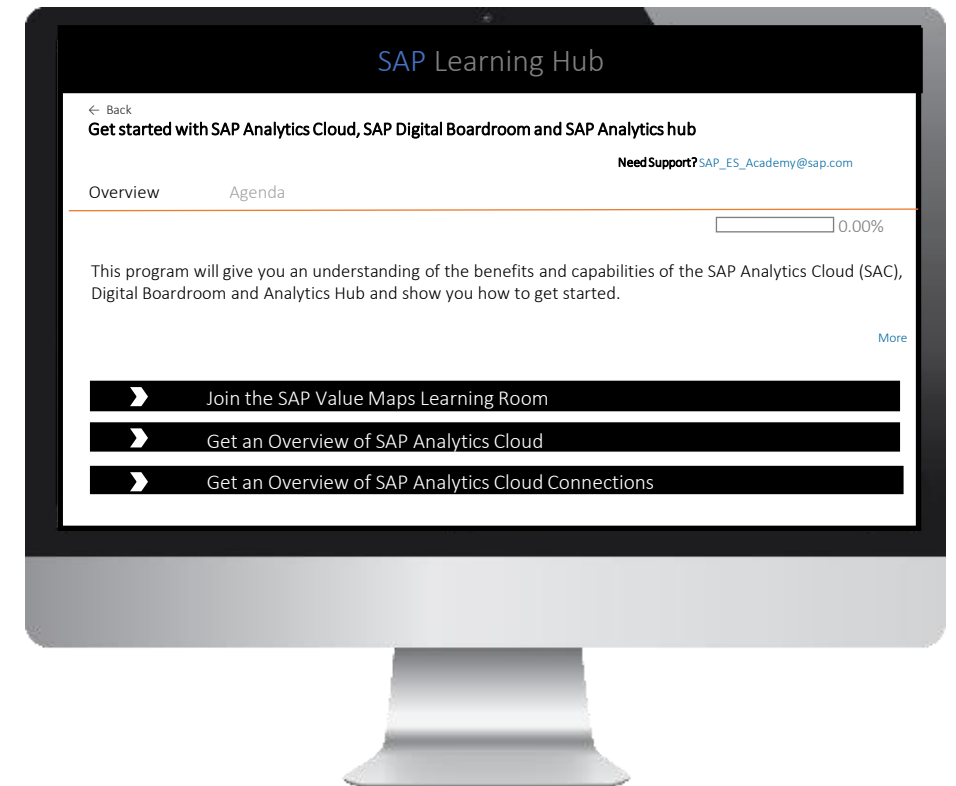
- [Get started with SAP Analytics Cloud, SAP Digital Boardroom and SAP Analytics Hub](#)
- [SAP Analytics Cloud - Creating Your First Model and Story](#)
[SAP Analytics Cloud - Augmented Analytics](#)
- [SAP Analytics Cloud - Live Connectivity for SAP HANA](#)
- [SAP Analytics Cloud - Live Connectivity for SAP BW](#)
- [SAP Planning & Analysis solutions](#)

SAP Business Objects

- [SAP BI Platform Monitoring with SAP BI Platform Support Tool](#)
- [SAP BI Platform Monitoring with Solution Manager](#)

SAP S/4HANA Analytics

- [Prepare Your SAP Fiori Implementation for SAP S/4HANA](#)
- [SAP S/4HANA Embedded Analytics – Fiori Analytical Apps](#)



SAP Enterprise Support Value Map for SAP Analytics Solutions

Learning Journey

A **learning journey** is an interactive visual guide designed to help you complete your learning and empowerment path for a particular SAP topic by exploring, filtering, and accessing a curated set of SAP Enterprise Support offerings and learning assets.

SAP Analytics Solutions – Learning Journeys

SAP Analytics Cloud

- [Enterprise](#)
- [Embedded](#)
- [Planning](#)



SAP Business Objects

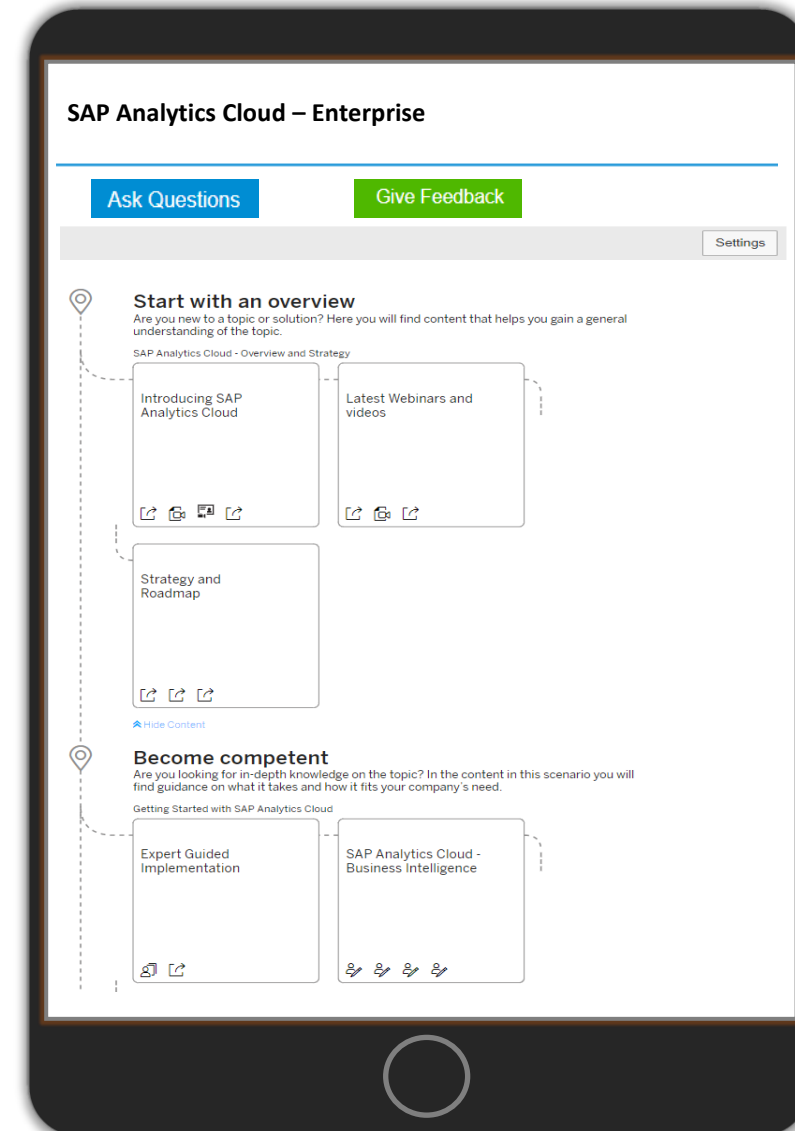
- [SAP BusinessObjects BI Platform](#)
- [SAP Lumira](#)

SAP S/4HANA Analytics

- [SAP S/4HANA embedded analytics](#)

Data Warehousing

- [Move to SAP BW/4HANA](#)
- [SAP Data Warehouse Cloud](#)



Agenda

- Introduction to SAP Value Maps as a part of SAP Enterprise Support
- How to register for SAP Value Maps
- Focus on SAP Analytics Solutions Value Map
 - Navigating the content
 - Learning Journeys
 - Learning Programs
 - Collaboration
 - Events
- **Customer experience – Pennsylvania State University**

About Us!

Julie M. Bressler - SAP Business Intelligence Group Manager

SIMBA - The Pennsylvania State University



PennState

About Us

- Learn more about us at:
<https://www.simba.psu.edu/>
- Recently presented at ASUG this past July with the Think Tanks and Interest Groups.



Think Tanks and Interest Groups

Embedded Analytics: A Conversation with Penn State

This Think Tank will be led by Julie Bressler, reporting and analytics lead at Penn State University (PSU). She will be joined by her team to discuss how SAP S/4HANA fundamentally changed and improved reporting at PSU. Highlighted will be the speed of which the SAP S/4HANA database returned results for large data sets.

Panelists:

- Julie Bressler – SAP Data Analytics and Reporting Lead, PSU
- Travis Freehauf – Data Analytics Specialist, PSU
- Misti Dotts – Data Analytics Specialist, PSU
- Xiaodong Zhang – Data Analytics Specialist, PSU

This interactive session on **Tuesday, July 13 at 11 a.m. ET/10 a.m. CT** will feature a discussion on:

- Embedded SAP S/4HANA Analytics
- Blended scenarios with SAP S/4HANA and SAP BW/4HANA
- SAP S/4HANA and SAP BW/4HANA Performance Testing and monitoring dashboards
- Lessons learned

How We Arrange Empowerment

Examples from my team

Examples for How Value Maps Works for Us

- Latest Features
- Functionalities
- Roadmap for S4 Analytics
- Learning Journeys
- Learning Programs
- Best Practices
- Web Casts
- Forums
- Getting Help

Utilizing Value Maps When We Need Help!

Where do we go if we get stuck?

Our Frequent Stops

What modules do we access most often?

Big Picture

Pulling all technologies together.



PennState

The background of the image shows two men in a server room. They are both wearing glasses and business casual attire. One man is holding a tablet and pointing at the screen, while the other looks on. They are standing in front of open server racks filled with equipment and cables. The lighting is dim, with blue and white light from the server racks illuminating the scene. A large, semi-transparent blue circle is overlaid on the left side of the image, containing the main text.

“SAP Enterprise Support value maps and off-site services and innovation tools provide great insight with clear and professional support, helping us better understand our current business processes and map our transition journey to SAP S/4HANA.”

- Jason Xu, IT Manager, Infinitus (China) Company Ltd.

Find more SAP Enterprise Support success stories on [sap.com](https://www.sap.com)

THE BEST RUN 

Questions?

For questions after this session, contact us at
SAPESValueMaps@sap.com

Connect with us on LinkedIn:

Michael Moloney
<https://www.linkedin.com/in/michael-moloney1>

Julie M. Bressler
<https://www.linkedin.com/in/julie-m-bressler/>

Thank you.

<https://support.sap.com/valuemaps>

Appendix

Links shown during presentation

- SAP Learning Hub – Comparison of Different Editions
<https://www.sap.com/documents/2017/06/f8209323-c27c-0010-82c7-eda71af511fa.html>
- Introduction to the SAP Learning Hub
<https://podcast.opensap.info/sap-learning-insights/2021/08/30/the-sap-learning-hub/>
- SAP Enterprise Support
<https://support.sap.com/en/offerings-programs/enterprise-support.html>
- SAP Value Maps
<https://support.sap.com/valuemaps>