

# From S/4HANA to the Shop Floor with SAP Digital Manufacturing Cloud

ASUG Webcast on November 15, 2022

Bernd Baier

Business Development Manager  
CNT Management Consulting Inc

Ricardo Simental

MES Solutions Architect  
Systema Inc



**Sponsored by:**

 **SYSTEMA**

 **ECNT**  
Management Consulting

# Today's Speakers



**Ricardo Simental**

Solutions Architect and Manufacturing Execution  
Systems Specialist at Systema Inc. Houston, TX

✉ Ricardo.Simental-Magana@systema.com  
☎ [+1] (979) 571 3396



**Bernd Baier**

SAP Business Development Manager, Sales Executive  
at CNT Management Consulting Inc. Atlanta GA

✉ b.baier@cnt-online.com  
☎ [+1] (404) 488 7109



# Webcast Highlights

Unify shop floor systems into a standardized SAP-based solution

Future-proof Manufacturing by transitioning to SAP DMC

The new Shop Floor with S/4HANA and SAP DMC

Develop a **Manufacturing Roadmap** from status quo to S/4HANA and DMC

Develop a cohesive **Manufacturing IT Strategy**

The new **SAP Digital Supply Chain**, and how to get there

Plan Transition to the **SAP Digital Manufacturing Cloud**

Steps to develop a **Roadmap to SAP S/4HANA with DMC**

# Agenda

- Introduction
- SAP S/4HANA from a Manufacturer's Perspective
- SAP DMC Deep Dive
- Summary, Q&A

# Agenda

- **Introduction**
- SAP S/4HANA from a Manufacturer's Perspective
- SAP DMC Deep Dive
- Summary, Q&A

# Introduction



## Facts

- Full-spectrum SAP Functional Consulting Firm
- 400+ SAP Consultants at ten global locations
- 250+ global SAP Customers
- 23+ Years of Customer Success
- Delivered 75+ SAP S/HANA projects
- Delivered 50+ SAP Cloud solutions

## Portfolio

- S/4HANA assessments and PreStudies
- S/4HANA greenfield and brownfield conversions
- S/4HANA RISE conversion
- Global business processes and templates
- End-to-end SAP implementation
- Program-, Project-, and Change-Management



## Facts

- Manufacturing Automation and Integration Specialists
- 200+ Consultants across seven global locations
- 25+ years of experience
- 1<sup>st</sup> DMC implementation in North America
- Discrete and process industries implementations
- 10,000+ equipment integrations worldwide

## Portfolio

- SAP Manufacturing Solutions
- SAP DMC Transition Services
- SAP HANA Cockpit
- 24/7 multilingual Application Management Support
- End-to-end integrations with SAP ERP
- Proprietary Semiconductor Manufacturing Automation

**Combined Experience, History & Know-How from SAP S/4HANA to the Shop Floor**

# SYSTEMA Profile / Competences



**Integration** is the art of harmonizing hardware, software, and equipment systems in order to optimize, visualize, and automate manufacturing processes.



**Automation** is the art of transforming manually performed business activities into processes that are orchestrated and controlled through software solutions.



**Optimization** is the art of maximizing manufacturing efficiency, throughput, OEE, yield, and quality by monitoring, analyzing, and iteratively tuning manufacturing processes.



**Visualization** is the art of providing transparency into manufacturing, engineering, and supply chain operations in order to enable continuous optimization.



**Migration** is the art of exchanging critical business processes and IT systems without disrupting manufacturing operations.

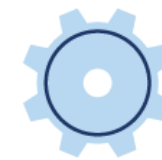


Consulting



Implementation

SYSTEMA  
SAP Solutions



Operation



Roll-out



## SAP Business Transformation

- SAP S/4HANA pre-studies and roadmaps
- SAP S/4HANA greenfield implementations
- SAP S/4HANA brownfield conversions
- #run2s4 conversion package ECC to SAP S/4HANA
- #rise2s4 conversion package to RISE with SAP

## SAP Consulting

- Functional SAP consulting
- Global business processes and templates
- End-to-end SAP implementations and rollouts
- Integration management
- SAP master data and data migration
- Program-, project-, and change management

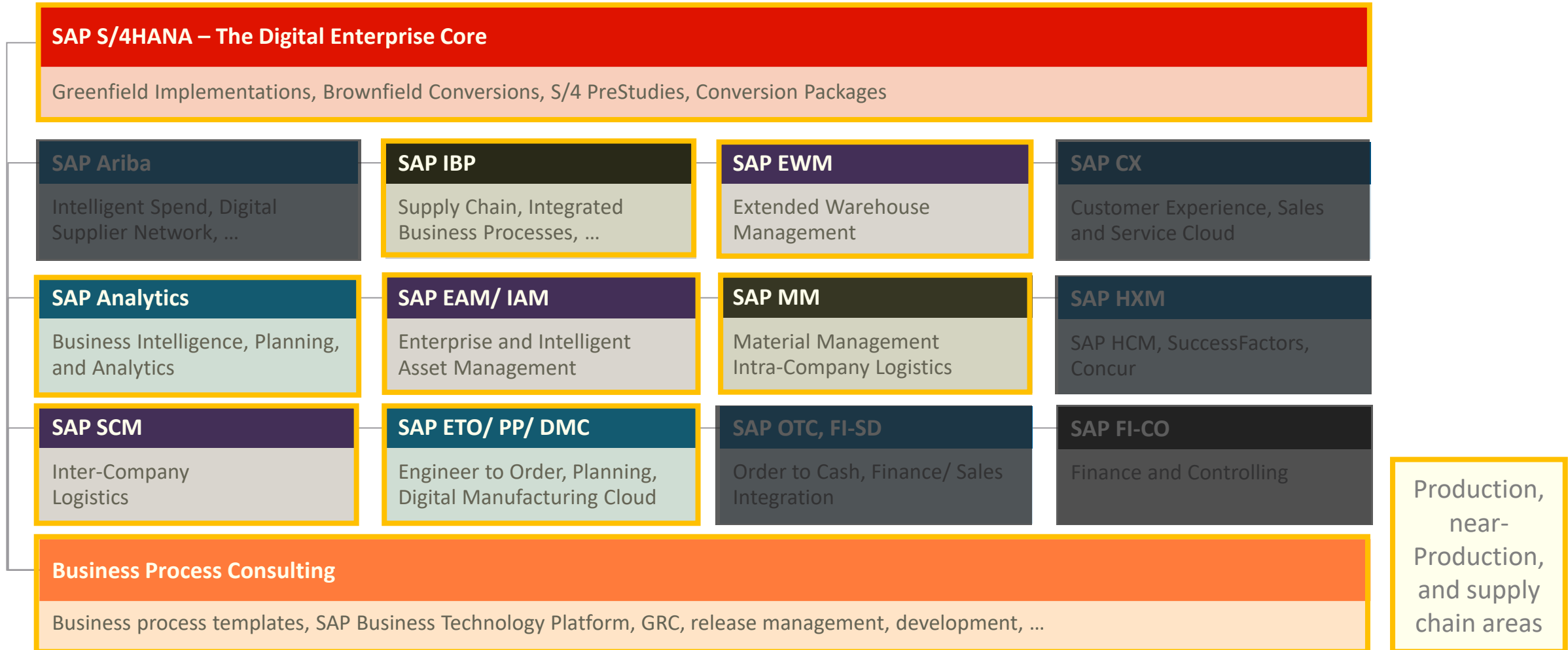
## SAP Cloud Solutions

- SAP S/4HANA Cloud and RISE with SAP PCE
- SAP Ariba / Spend and SAP Business Networks
- SAP CX, CS / Customer Experience, Service Cloud
- SAP IBP/ Integrated Business Planning
- SAP SuccessFactors and Concur
- SAP DMC/ Digital Manufacturing Cloud
- SAP BTP/ Business Technology Platform

## SAP Industry Best Practices

- Industry-specific end-to-end processes
- Plug-in solutions for industrial manufacturing
- Industries: Manufacturing, Industrial Manufacturing, Regulated Industries (Life Science, etc), others

# CNT Competences



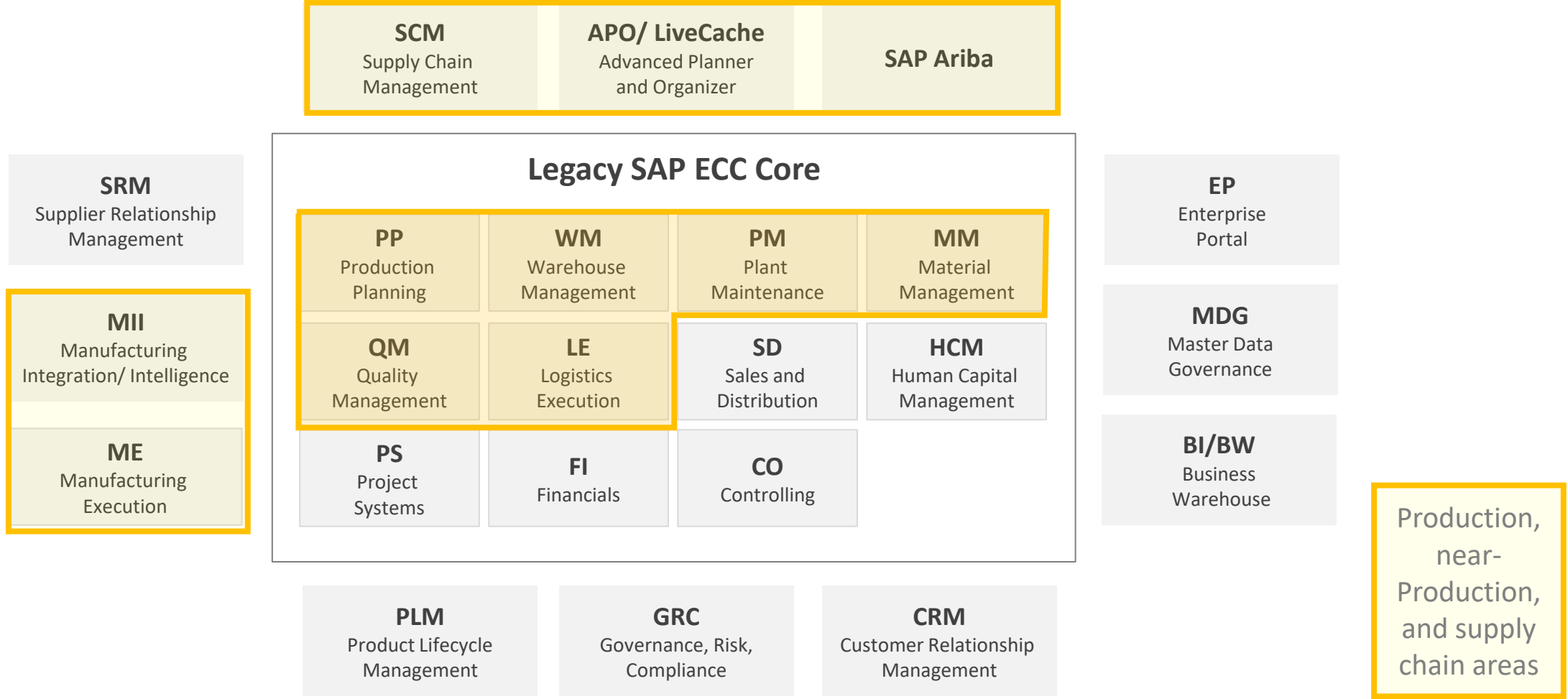
# Agenda

- Introduction
- **SAP S/4HANA from a Manufacturer's Perspective**
- SAP DMC Deep Dive
- Summary, Q&A

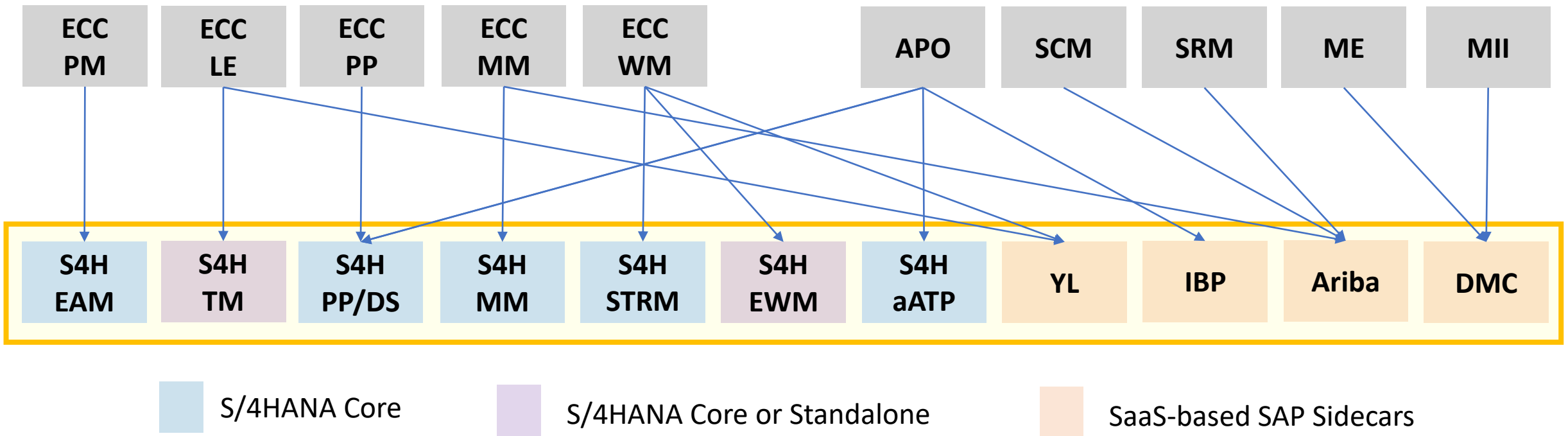
# What is new for Manufacturing in and around SAP S/4HANA?

- SAP undertook the **single largest simplification initiative** across all SAP modules **into the digital enterprise core with and around SAP S/4HANA.**
- SAP solutions are/will be **fully SaaS-based** (e.g., Ariba, IBP, S/4HANA Cloud) or, at a minimum, IaaS or PaaS-based (S/4HANA PCE, BTP, ...)
- **SAP is dead-serious about RISE with SAP.** Considering standardization with S/4HANA, it makes perfect sense to streamline the operational model.
- SAP deploys its simplification strategy holistically across its portfolio and organization.
- **SAP launched the “Digital Supply Chain”** - A modular approach that can operate in parallel with implementing SAP S/4HANA.

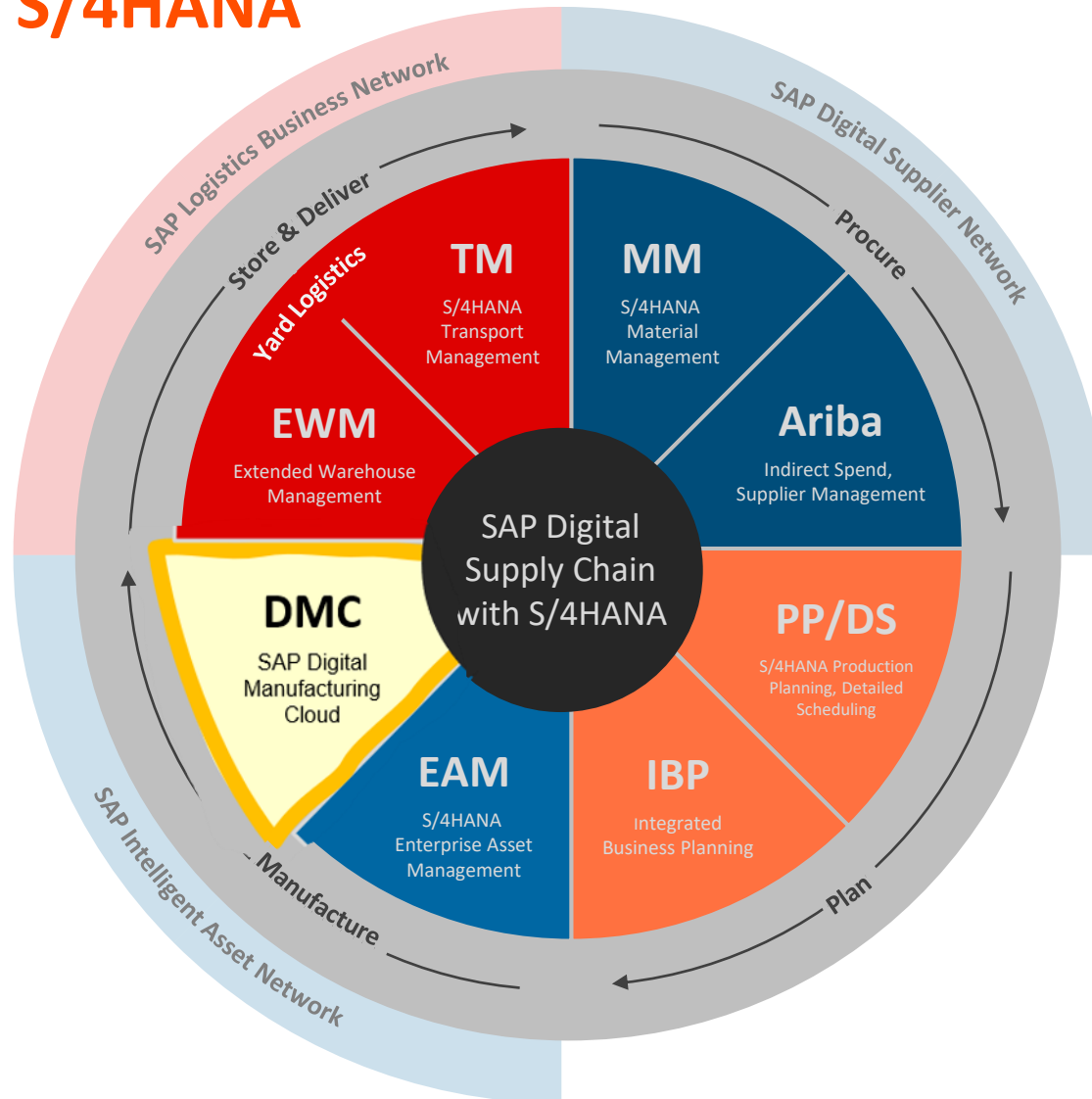
# Manufacturing-related Topics with SAP ECC



# Near-Production SAP Components Transformation Paths



# Integrated Digital Supply Chain (DSC) with SAP S/4HANA

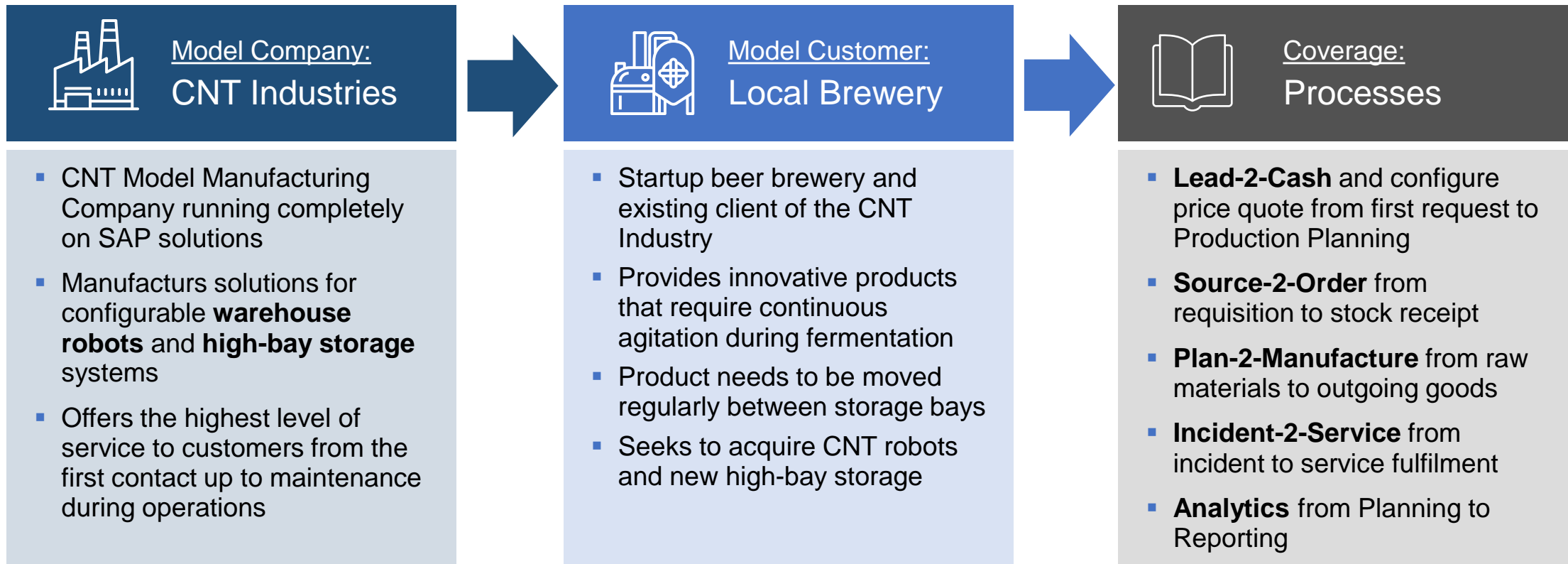


With S/4HANA, Ariba, DMC, IBP, EWM, and the three business networks DSN, IAN, and LBN, SAP delivers **the most integrated Digital Supply Chain to date**

The SAP Digital Supply Chain illustrates the need to embrace approaching projects holistically:

- Business process/ BPML layer
- Master Data Concept
- SAP S/4HANA enterprise core
- DMC Implementation and Integration

# The SAP Digital Enterprise with the Model Company “CNT Industries”



CNT developed its own SAP Model Company and mapped it to an integrated SAP demo landscape



# The SAP Digital Enterprise with the Model Company “CNT Industries”

## Organization

Marketing

Sales

Service

Procurement

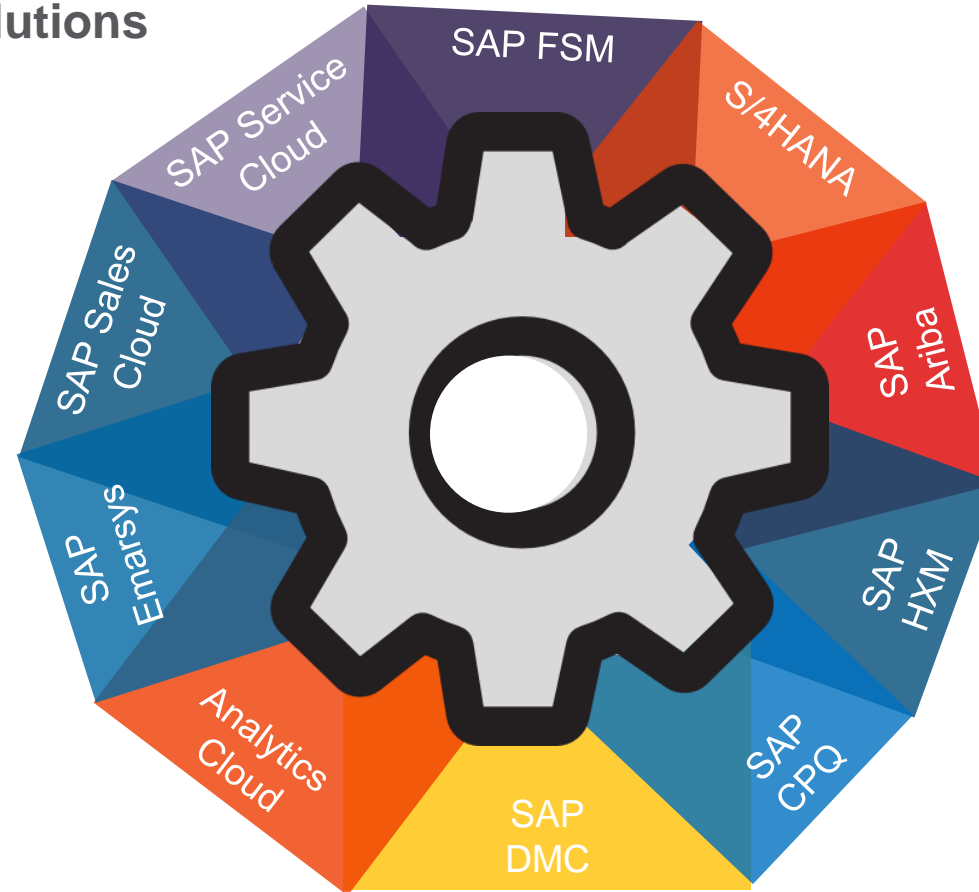
Production

Logistics

Finance & Controlling

Human Capital Management

## Solutions



## Processes

Lead-2-Cash

Configure Price Quote

Incident-2-Service

Source-2-Pay

Plan-2-Manufacture

Plan-2-Report

Recruit-2-Retire

# The SAP Digital Enterprise with the Model Company “CNT Industries”

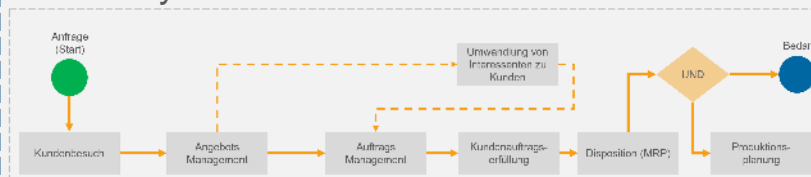
## Plan-2-Report

Demo System

SAP Analytics Cloud

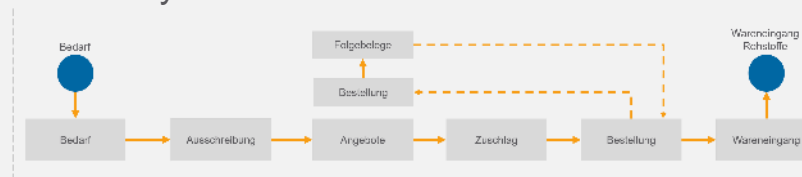
## Quote-2-Plan

Demo System



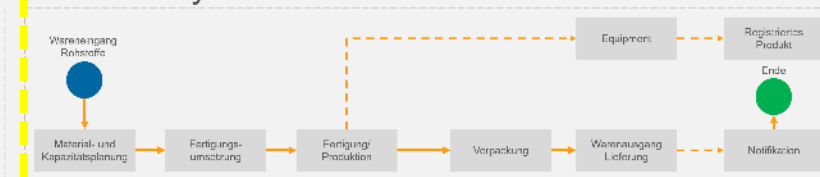
## Source-2-Order

Demo System



## Plan-2-Manufacture

Demo System



MS Outlook

SAP Sales Cloud

SAP S/4HANA

SAP Ariba

SAP S/4HANA

SAP DMC

S/4 HANA

SAP Sales Cloud

SAP Cloud Integration

SAP Cloud Integration Gateway

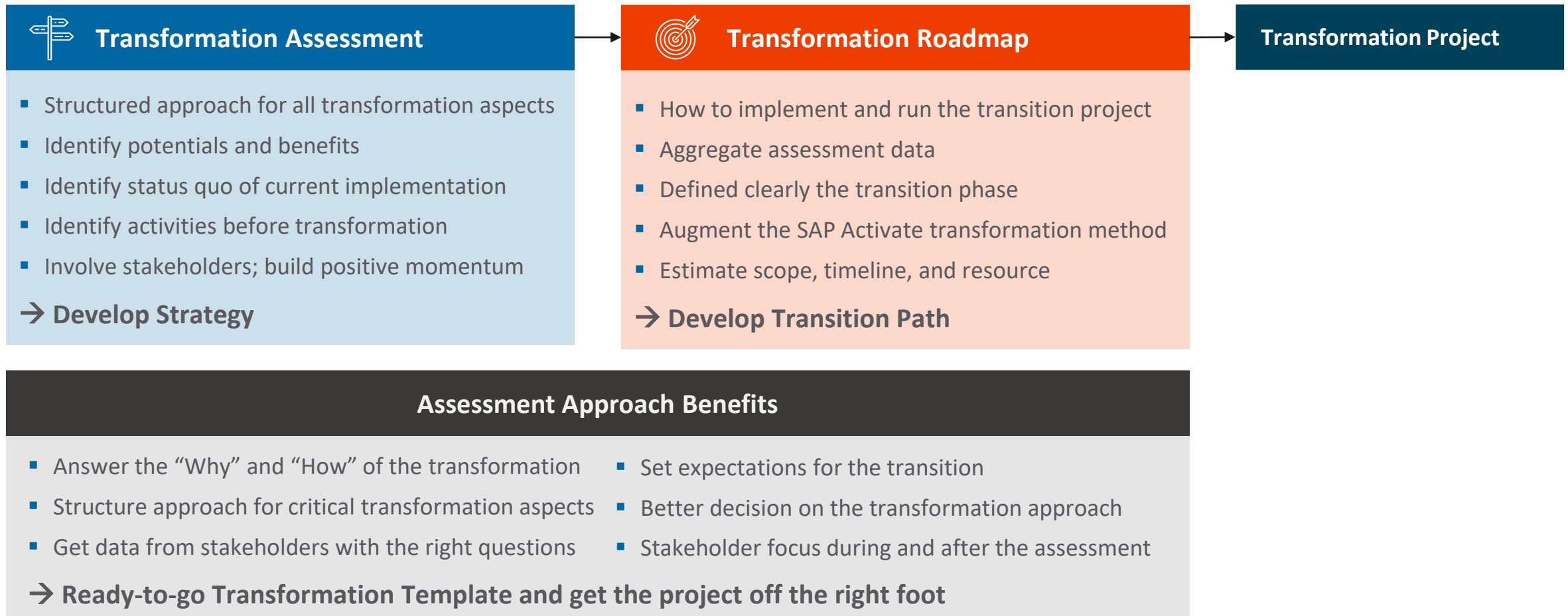
SAP Cloud Integration

# Transformation Options



Brownfield Conversion	Empty Shell Conversion	Mix & Match	Greenfield Transformation
Reuse >90% of existing processes/implementation	Reuse >50% of existing processes/implementation	Reuse <50% of existing processes/implementation	Redesign of processes / implementations
ECC to SAP S/4HANA			
WM to SRM, PM to EAM			
WM to EWM			
LE to TM			
SCM/ APO to IBP			
MII/ME to DMC			

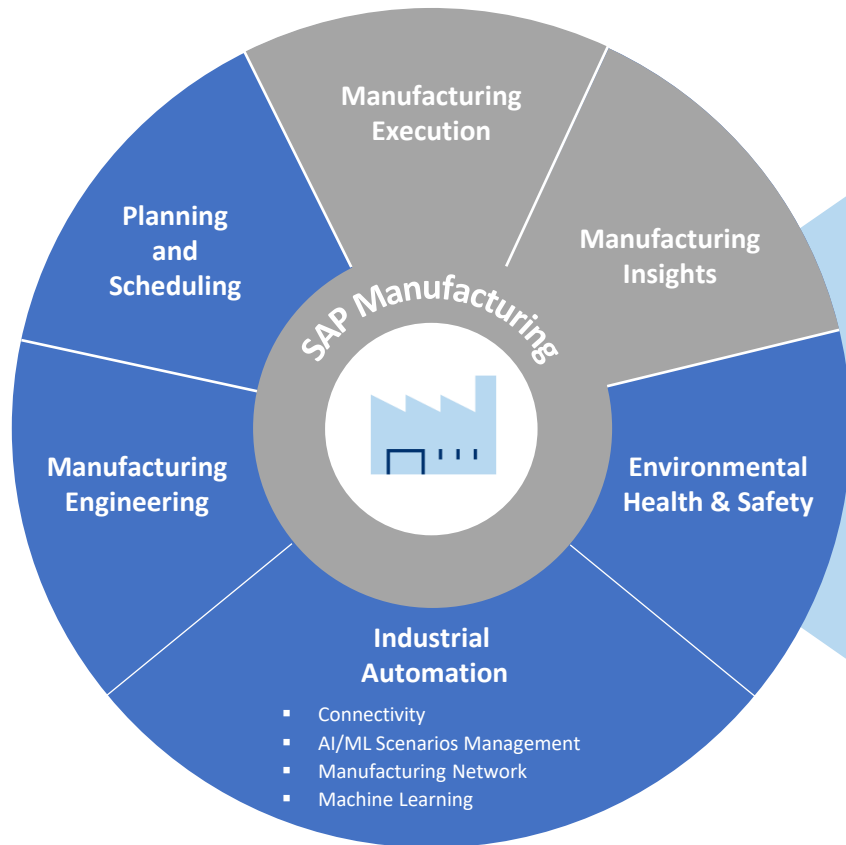
# Transformation via an Assessment Approach



# Agenda

- Introduction
- SAP S/4HANA from a Manufacturer's Perspective
- **SAP DMC Deep Dive**
- Summary, Q&A

# SAP Digital Manufacturing Solutions



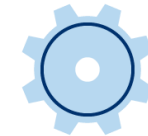
## SAP Digital Manufacturing Cloud

Manufacturing Insights  
Manufacturing Execution



## SAP Manufacturing Suite

SAP Manufacturing Execution  
SAP Manufacturing Integration and Intelligence  
SAP Plant Connectivity  
SAP Digital Manufacturing Cloud Edge



## SAP S/4HANA Manufacturing

for Production Engineering and Operations  
for Planning and Scheduling  
Environmental, Health & Safety

# SAP Digital Manufacturing Cloud



**Paperless production** with intuitive user interfaces for production operators, automatic data collections and set machine parameters, thereby lowering cost, increasing productivity and quality.



**Design, distribute and dynamically control** manufacturing shop floor activities enabling a smart factory.



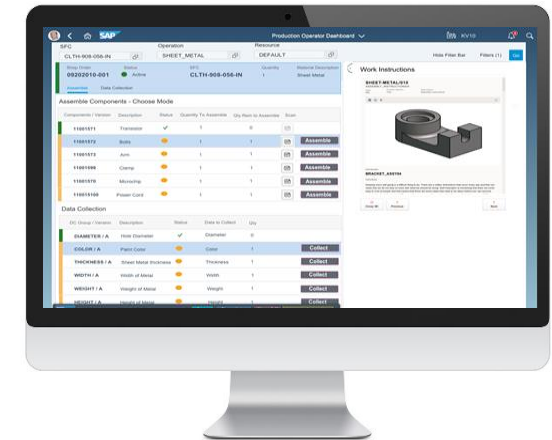
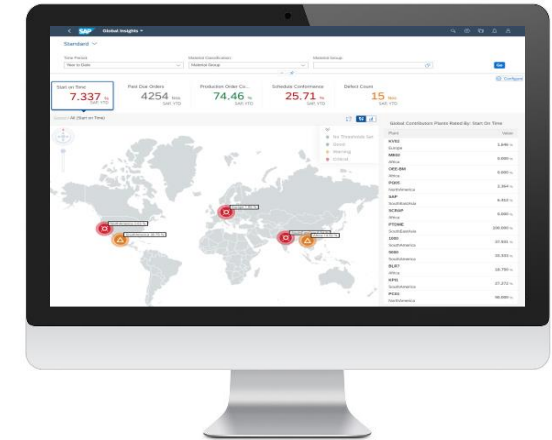
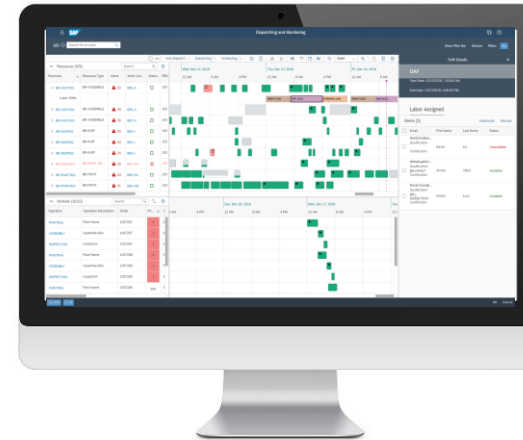
**Shift and Labor planning** to ensure business operations with right qualifications. **Production Order scheduling and dispatching** considering labor, resource and maintenance constraints to plan operations and adopt to short term changes.



**Cross plant real-time analytics for manufacturing performance** e.g. Perfect Order Fulfillment, Overall Equipment Effectiveness, loss analysis along with machine data to identify improvement opportunities.



Ability to **collect and share product genealogy data** between members of the **network** to trace accountability and provide transparency.



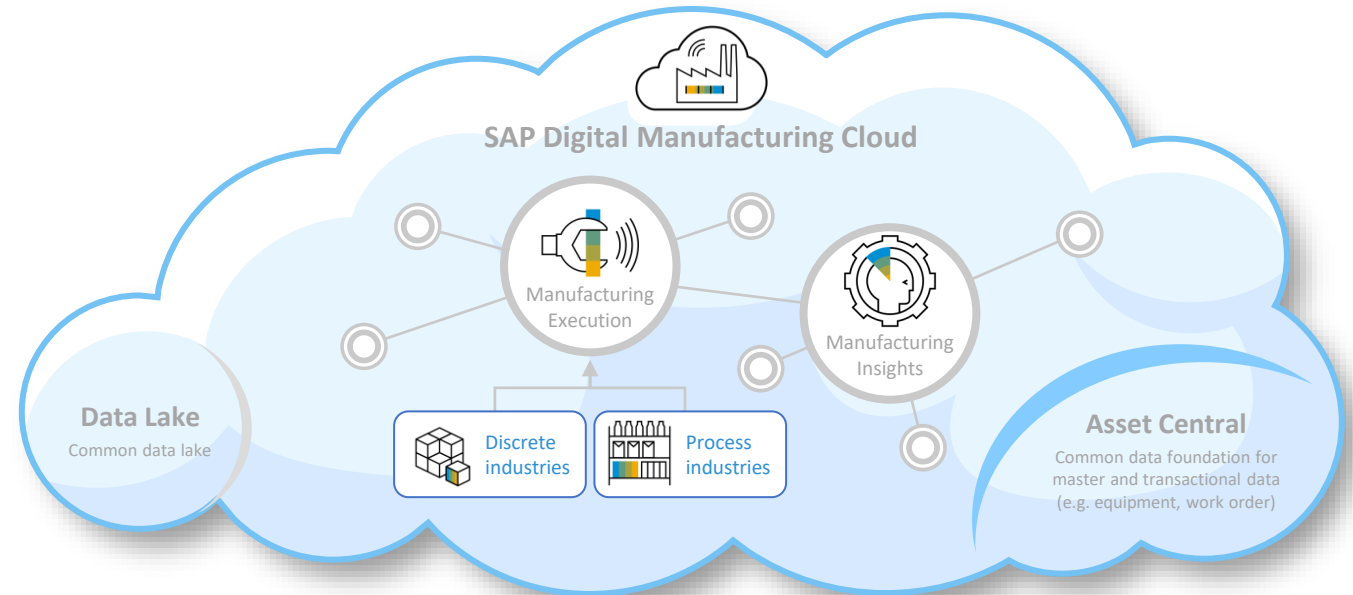
# SAP Digital Manufacturing Cloud

## Manufacturing Execution

- Manage your production using the latest technology built on the SAP Cloud Platform
- Orchestrate and control the shop floor with out-of-the box integration to SAP ERP or S/4HANA
- Supports Discrete as well as Process industry processes

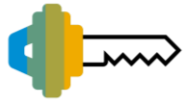
## Manufacturing Insights

- Take informed decisions based on to real-time insights and root cause analysis
- Act as the digital twin of the physical world, for equipment and any kind automation devices
- Exchange data between IT and Operational Technology in a manufacturing environment
- Detect defects early in production with prediction models using machine learning



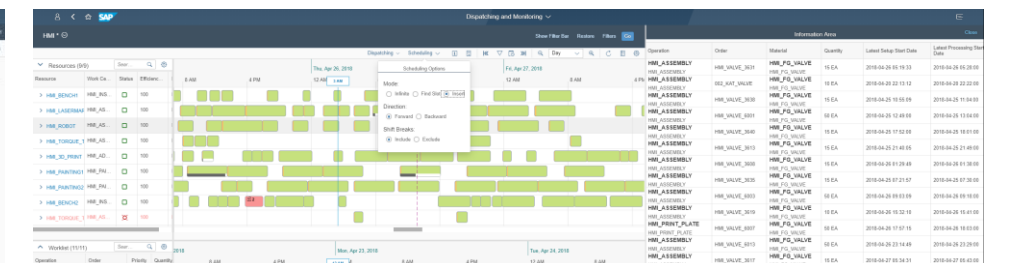
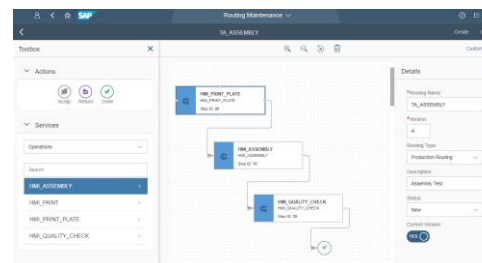
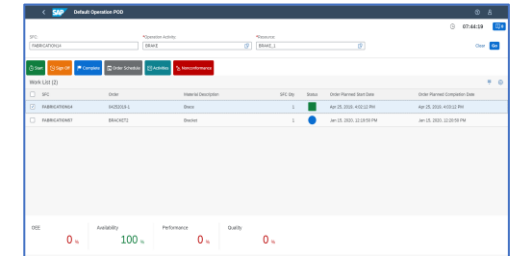
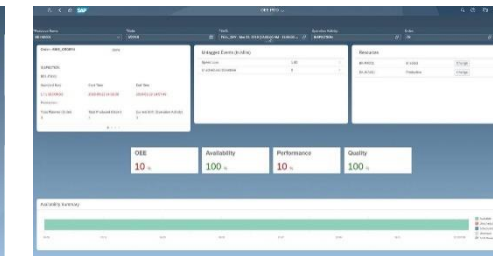
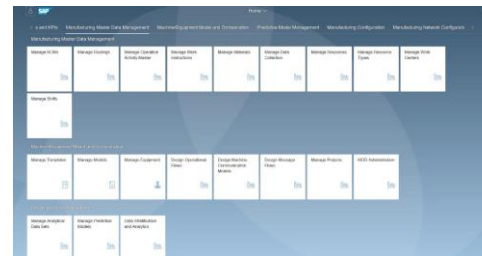


# SAP Digital Manufacturing Cloud for Execution

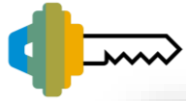


## Key capabilities

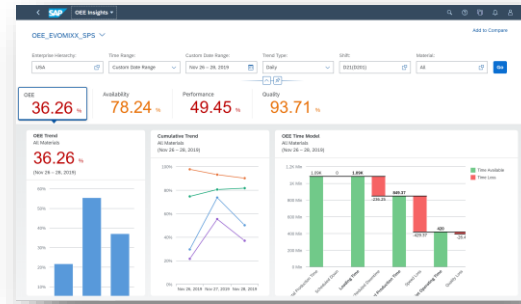
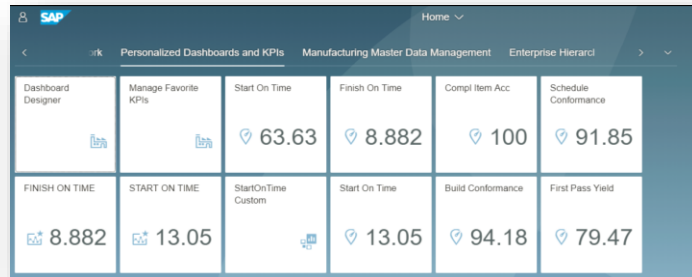
- Monitor the entire manufacturing process to optimize resources and execution
- Role-specific Fiori and operator dashboards
- Fully configurable Production Operator Dashboard (POD) that supports drag & drop and preview
- Monitor OEE and manage downtime events
- Resource Orchestration to manage shop floor workflow and labor assignments
- Automation interfaces to provide for shop-floor-driven manufacturing events and data collection



# SAP Digital Manufacturing Cloud for Insights



## Outline



## Enterprise-wide Manufacturing Intelligence

- Standardized Global Insights, Plant Insights & KPI Analytics



## Personalized KPI Builder and Visualizer

- Analytical Model Builder & Dashboard Designer



## Operational Visibility



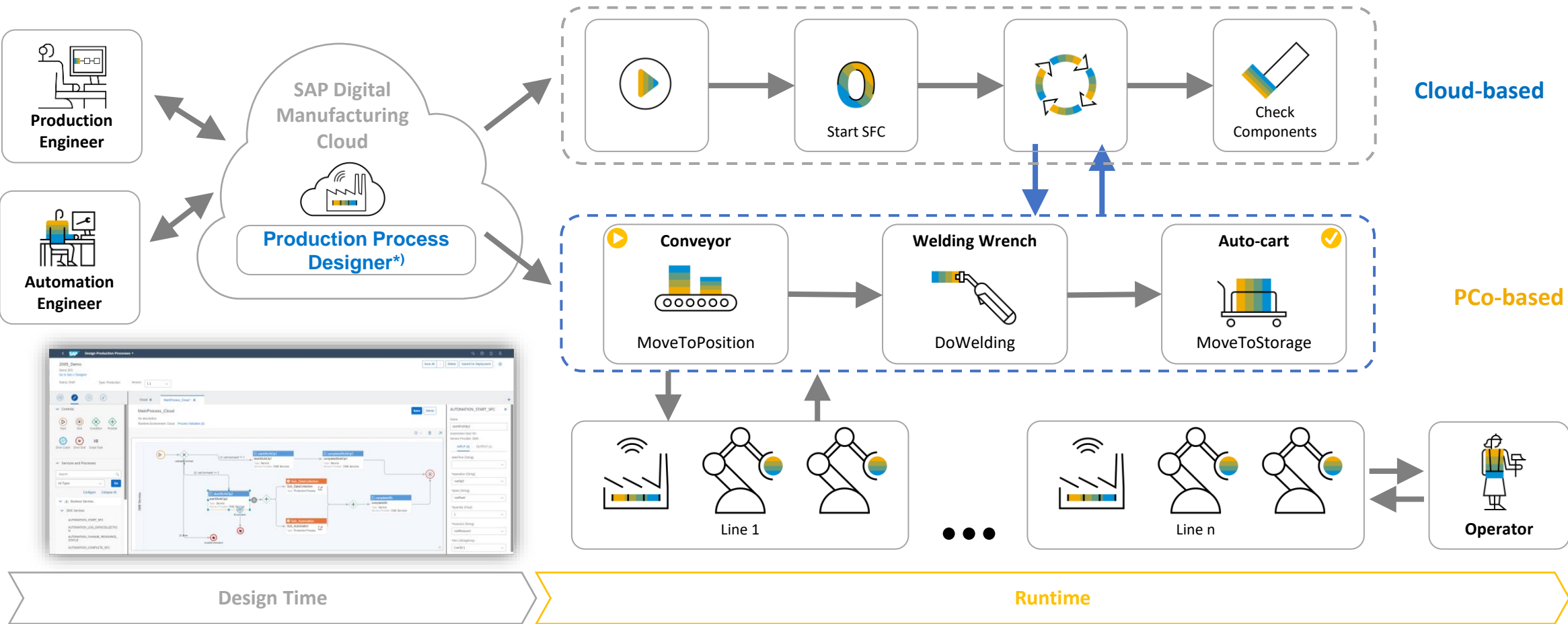
## Alert Management



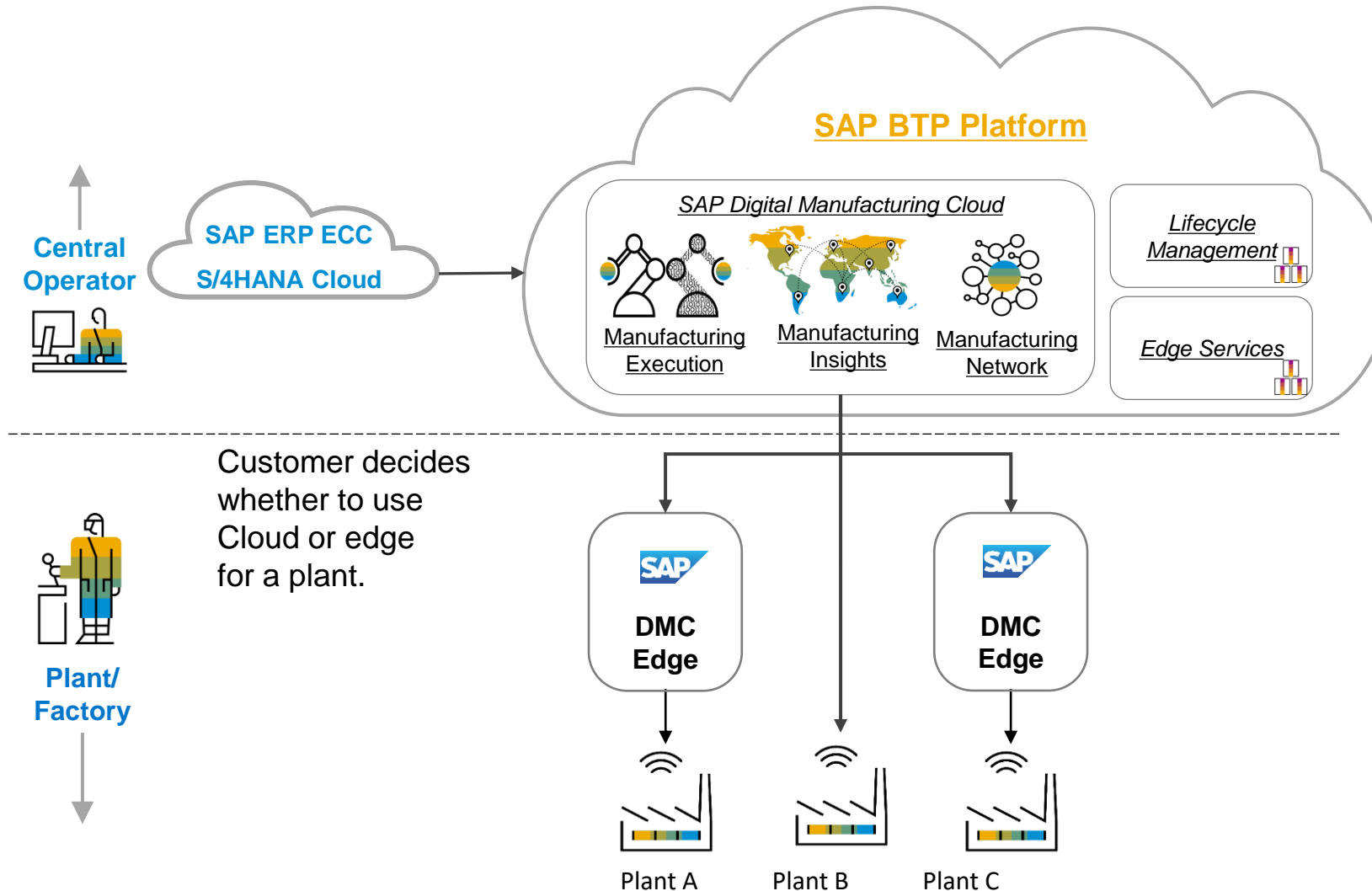
## Artificial Intelligence / Machine Learning Scenario Manager

# SAP DMC – Machine and Process Orchestration

## Production Process Designer



# SAP DMC – Edge Component



## Central operator:

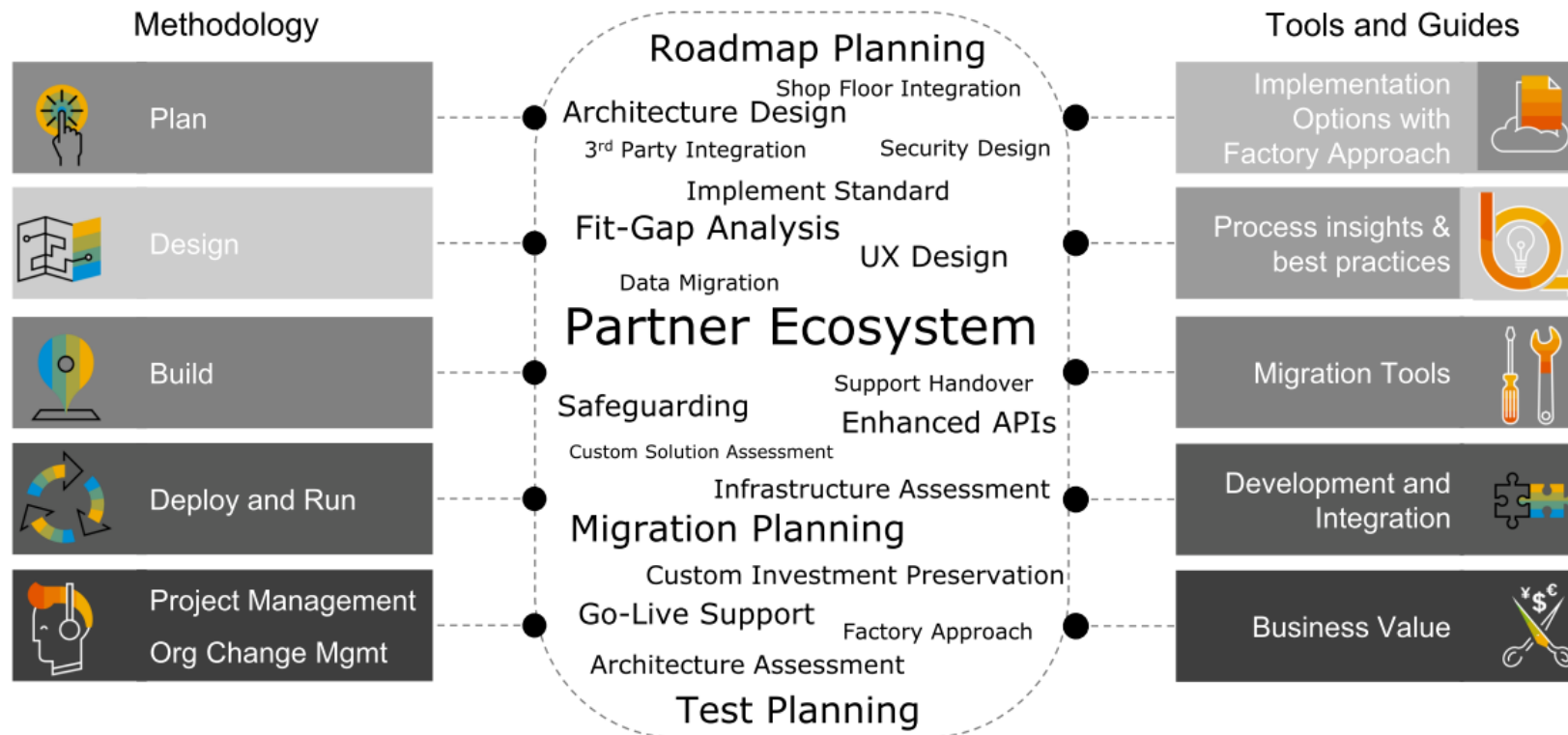
- Works in the Cloud
- Focus on planning and preparation
- Orders are generally created in SAP S/4HANA

## Plant and factory:

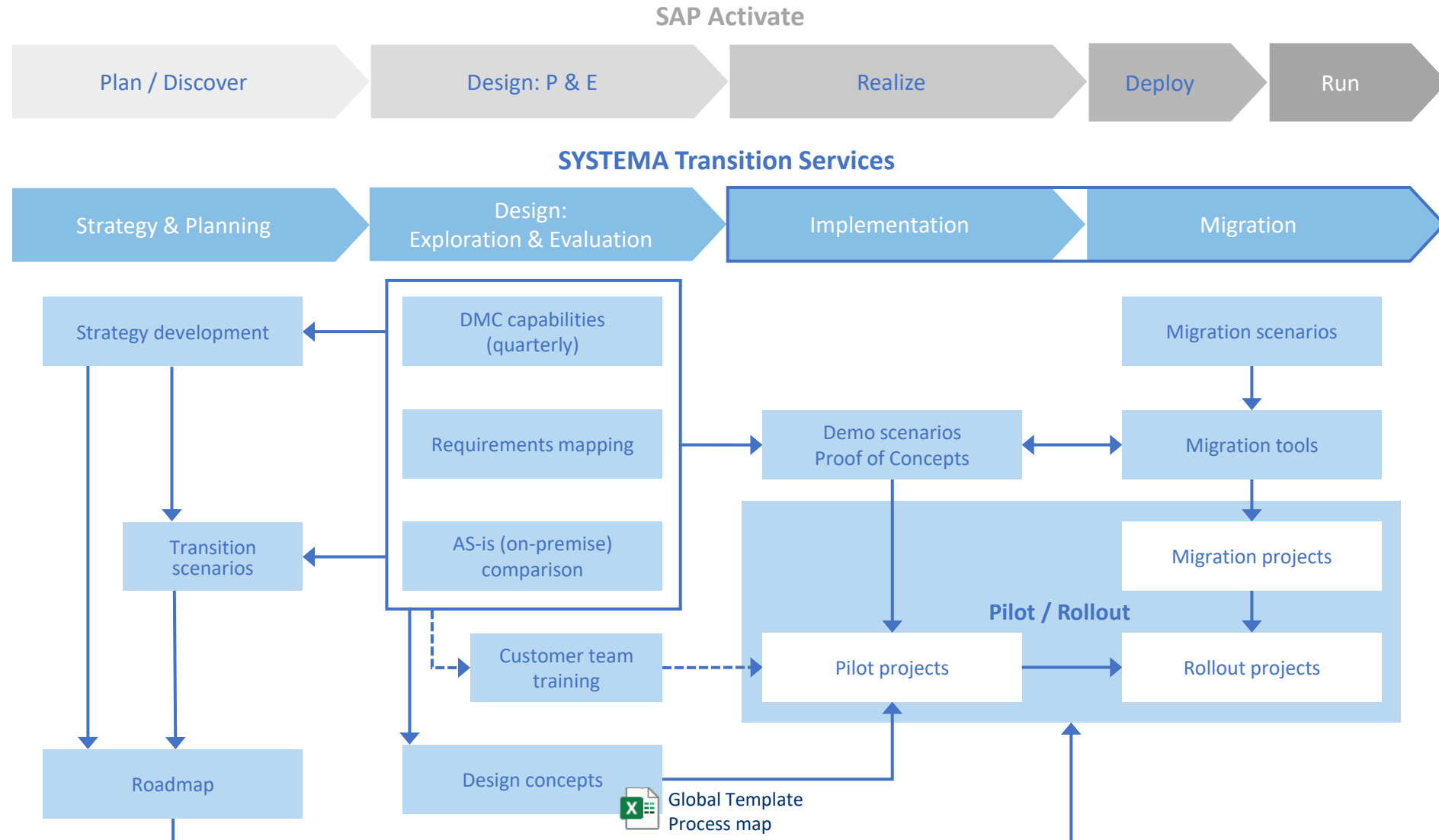
- Mission critical operations such as order execution, data collection, machine data processing, ...
- It's possible to create shop floor orders on the edge. Orders are synchronized to SAP Digital Manufacturing Cloud

# SYSTEMA Cloud Transition Strategy

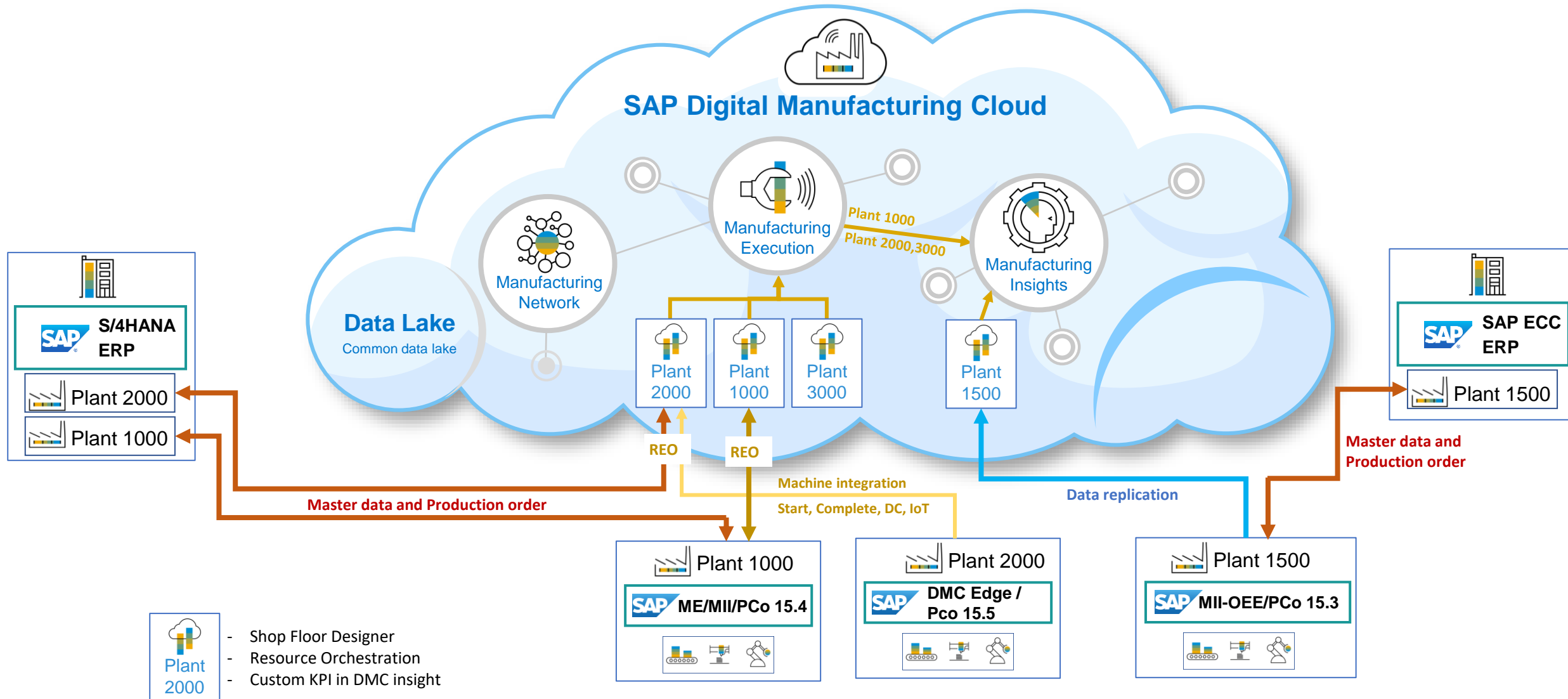
- Fitting to SAP Activate
- Global template approach
- Organizational, functional, and technical focus
- SYSTEMA's tailored approach fitting to SAP Safe Passage



# SYSTEMA Cloud Transition Strategy



# Customer DMC landscape and actual use cases



# Agenda

- Introduction
- SAP S/4HANA from a Manufacturer's Perspective
- SAP DMC Deep Dive
- **Summary, Q&A**



# Takeaway from Today's Presentation

01	The U.S. Manufacturing Renaissance offers unique Opportunities for a new SAP MES
02	DMC is a strategic asset for your SAP Manufacturing IT Landscape
03	DMC is the foundation of a fully automated and fully integrated Manufacturing Plant
04	Once on S/4HANA and/or DMC, innovation cycles are faster with quick Return of Value
05	Assessments with focus on Manufacturing helps shape vision, strategy, and roadmap
06	DMC can be implemented any time in parallel to your S/4HANA transformation journey
07	You benefit from experienced SAP partners with manufacturing focus

# Questions?

For questions after this session, contact us at

## Ricardo Simental

Solutions Architect and Manufacturing Execution  
Systems Specialist at Systema Inc. Houston, TX

✉ Ricardo.Simental-Magana@systema.com

☎ [+1] (979) 571 3396



## Bernd Baier

SAP Business Development Manager, Sales Executive  
at CNT Management Consulting Inc. Atlanta GA

✉ b.baier@cnt-online.com

☎ [+1] (404) 488 7109



Or directly book a 1:1 deep dive with CNT and Systema: [\[booking link\]](#)

**Thank you.**