

# **SAP Business Client and SAP GUI for Windows – – the Journey Continuous**

What's new in the upcoming  
release 7.70

Sandra Thimme, Ralph Resech

# Agenda

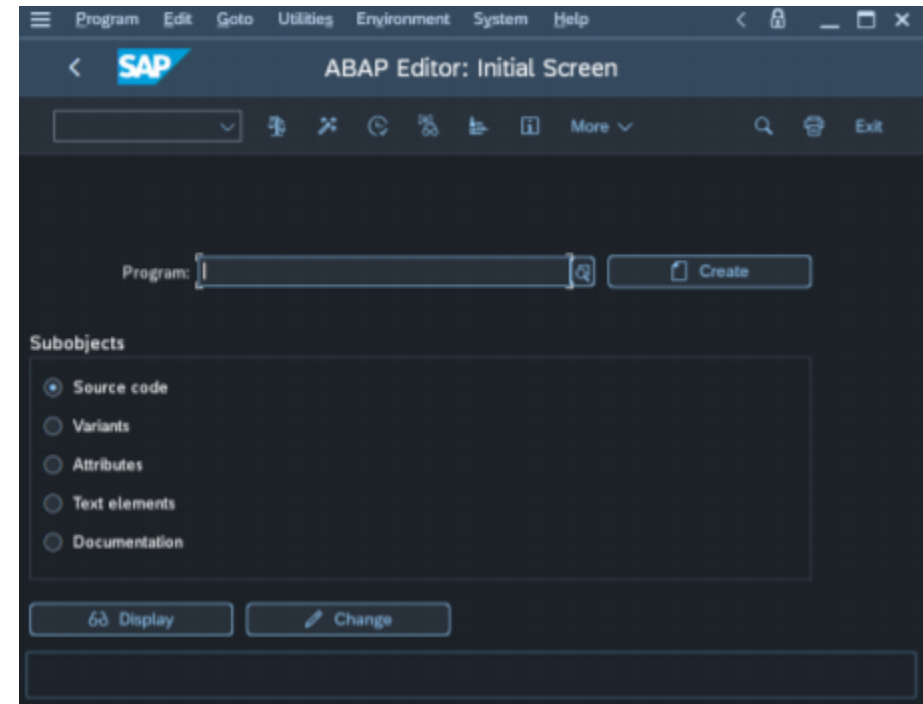
- What's New
  - SAP GUI
  - SAP Business Client
- Support Timeline

# SAP GUI for Windows

# SAP GUI - New Theme: Quartz

SAP GUI 7.70 introduces a new family of themes which are aligned with the Fiori 3.0 look:

- Quartz (Light)
- Quartz Dark
- Quartz High Contrast Black
- Quartz High Contrast White

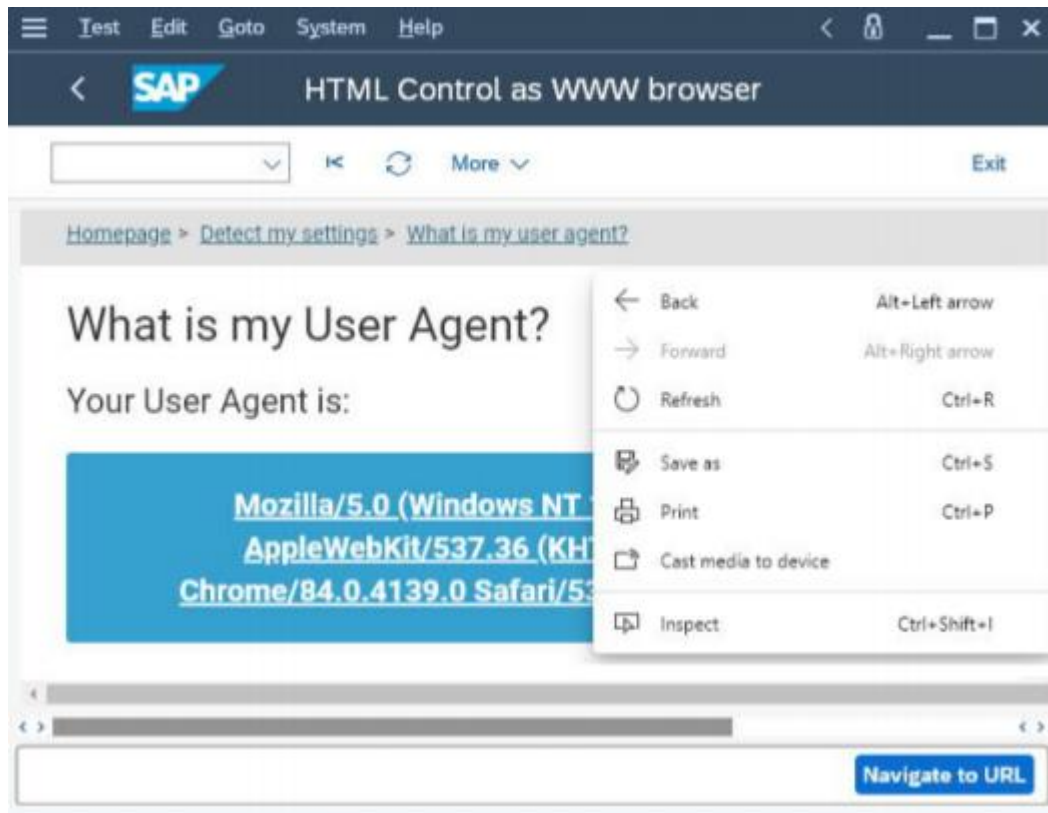


Technical prerequisites: None

Activation of feature: Automatic / via options dialog

# SAP GUI - HTML Control based on Chromium Edge

To provide a more modern browsing experience and overcome limitations in Internet Explorer, SAP GUI 7.70 introduces an alternative browser control based on Microsoft Edge (WebView2 Control). This feature was developed in close cooperation with Microsoft:



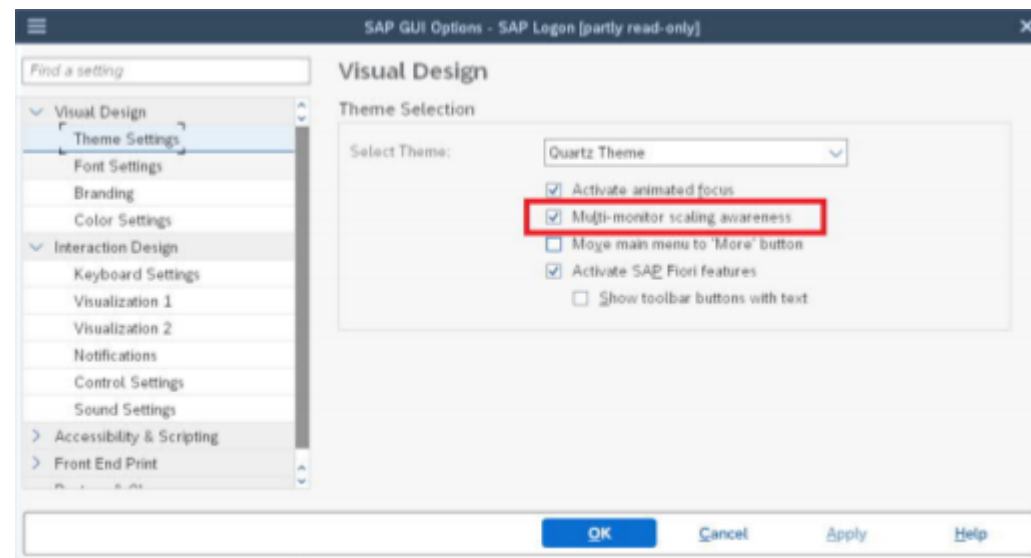
Technical prerequisites: Installation of a current Microsoft Edge version (from <https://www.microsoftedgeinsider.com/en-us/download>). If your Edge is not new enough, SAP GUI options dialog will not offer the option „Edge (based on Chromium)“

Activation of feature: Via options dialog (default is IE)

# SAP GUI - Multi Monitor Scaling Awareness

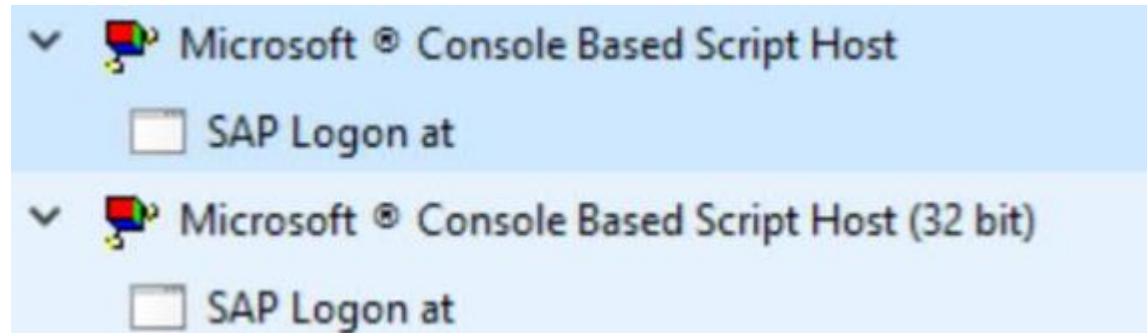
To overcome drawing issues when using multiple monitors with different scaling settings (like blurry display or incorrect window sizes when SAP GUI is embedded), SAP GUI 7.70 introduces the ability to react on different scaling settings per monitor. Technical prerequisites: Windows 10, 1803 or newer, at least two monitors with different scaling settings, usage of Belize or Quartz themes in SAP GUI

Activation of feature: Via options dialog (default is “off”)



# SAP GUI - 64bit Versions of NWRFC Controls

The automation controls “Logon Control”, “BAPI Control”, “Function Control” and “Table Factory Control” are used in “outside-in” approaches to retrieve data from an SAP System without using SAP GUI. Often these controls are used in scripts or macros of Office applications like Excel. Since up to release 7.60 these are 32bit components, the stronger distribution of 64bit versions of Microsoft Office introduces a challenge, because 32bit controls can’t be used from 64bit processes. SAP GUI 7.70 addresses this by introducing additional 64bit versions of these controls. Technical prerequisites: 64bit operating system, selection of the new installation component “64Bit RFC Controls”, usage of 64bit processes (like Microsoft Excel) to call the controls.



# SAP Business Client



# SAP Business Client - Quartz Theme

With 7.70 SAP Business Client supports the FIORI 3 themes 'Quartz Light', 'Quartz Dark' and its High Contrast Black and High Contrast White equivalents.

The left screenshot displays the 'Manage Purchase Orders' Fiori app. It shows a list of purchase orders with columns for Purchase Order, Supplier, Overdue Items, Company Code, Status, and Approval Status. The list is filtered by 'Editing Status' and shows 244,821 purchase orders. The right screenshot shows the detailed view of a specific purchase order (Standard PO NB 4500187364) created by BALOGHP. It displays the header information, including the supplier (SD\_SUPPLIER Sales&Distribution Ltd) and the document date (28.04.2017). The main table shows the material data for item 10, including the material (SD\_MAT), short text (SD Material for testing), PO quantity (10,000 KG), and net price (100,00 USD). The bottom section shows the 'Quantities/Weights' tab with fields for PO quantity, order unit, price unit, net weight, gross weight, volume, and points.

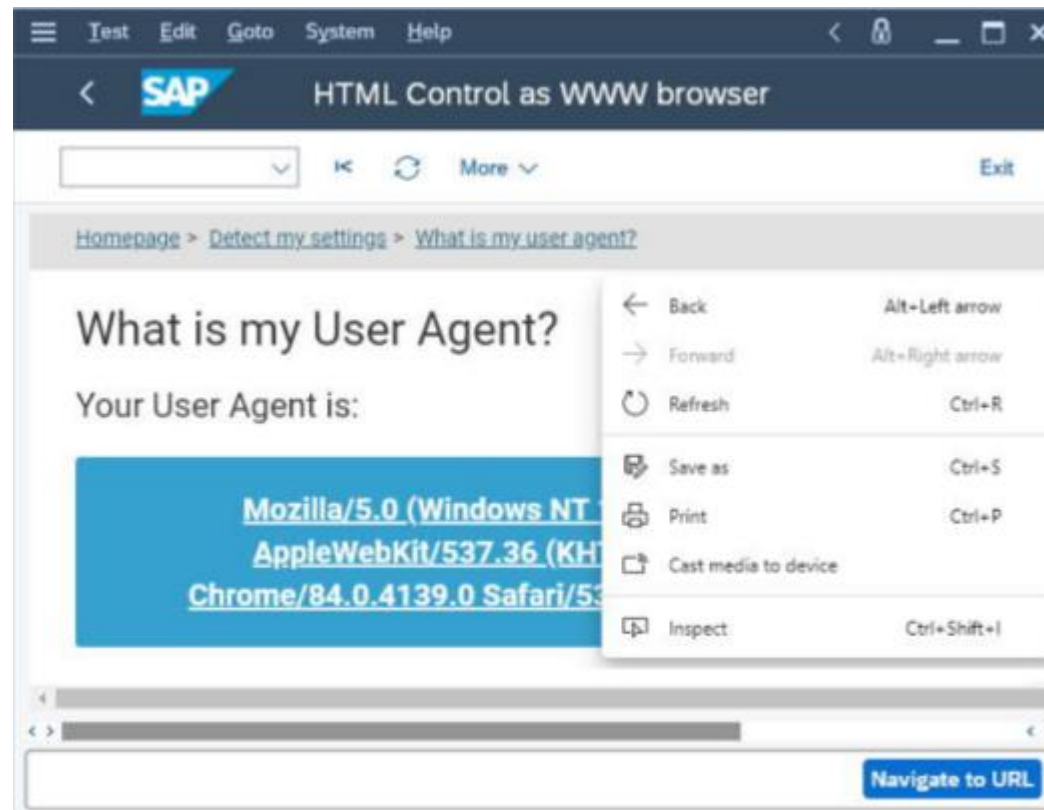
Purchase Order	Supplier	Overdue Items	Company Code	Status	Approval Status
Standard PO NB 4500245402	FLOG_SUP (FLOG_SUP)	0 Overdue	Company Code 1710 (1710)	Follow-On Documents	
StockTransOrderDel. 4500245401	FLOG_STO (FLOG_STO)	0 Overdue	Company Code 1710 (1710)	Follow-On Documents	
Standard PO NB 4500245400	Heineken Org. (VEND001)	3 Overdue	SAP SE (0001)	Sent	
Standard PO NB 4500245399	Heineken Org. (VEND001)	3 Overdue	SAP SE (0001)	Sent	
Standard PO NB 4500245398	Heineken Org. (VEND001)	1 Overdue	SAP SE (0001)	Sent	
Standard PO NB 4500245397	Heineken Org. (VEND001)	1 Overdue	SAP SE (0001)	Sent	

S.	Item	A	Material	Short Text	PO Quantity	OU	C	Deliv. Date	Net Price	Curre...	Per	GPU	Mat Group
	10		SD_MAT	SD Material for testing	10,000 KG			28.04.2017	100,00 USD	USD	1	KG	187

Item	PO Quantity	Order Unit	Price Unit	Net Weight	Gross Weight	Volume	Points
10   SD_MAT   SD Material for testing	10,000 KG	1 KG	1 KG	0,000 KG /1: KG	0,000 KG /1: KG	0,000 /1: KG	0,000 /1: KG

# SAP Business Client - Microsoft Edge WebView2 – HTML Control based on Edge

Microsoft's new Chromium-based browser control WebView2 can be used in the SAP Business Client. The control relies on the fast Chromium rendering and is updated on operating system level. Compared to the previously available Chromium browser control, this allows in time updates of the browser control instead of depending on SAP Business Client patches.



## **SAP Business Client - Session Timeout**

In the past, users sometimes experienced an undesirable timeout in one tab while they were still working in another one, especially while running FLP and SAP GUI for Windows transactions side by side. The SAP Business Client 7.70 now orchestrates the user interaction across multiple tabs and technologies.

## **SAP Business Client – Complete 64bit Version**

State-of-the-art processing. Much faster – especially regarding Fiori Apps.

## **SAP Business Client – Dynamic Browser Control Selection**

Depending on the App you want to display the according web browser will be selected.

# SAP Business Client - Compact Header

Business Client now features a compact header similar to popular web browsers to offer an even better user experience and more space for the content. This can be enabled at Menu → View → Show Tabs in a Separate Row

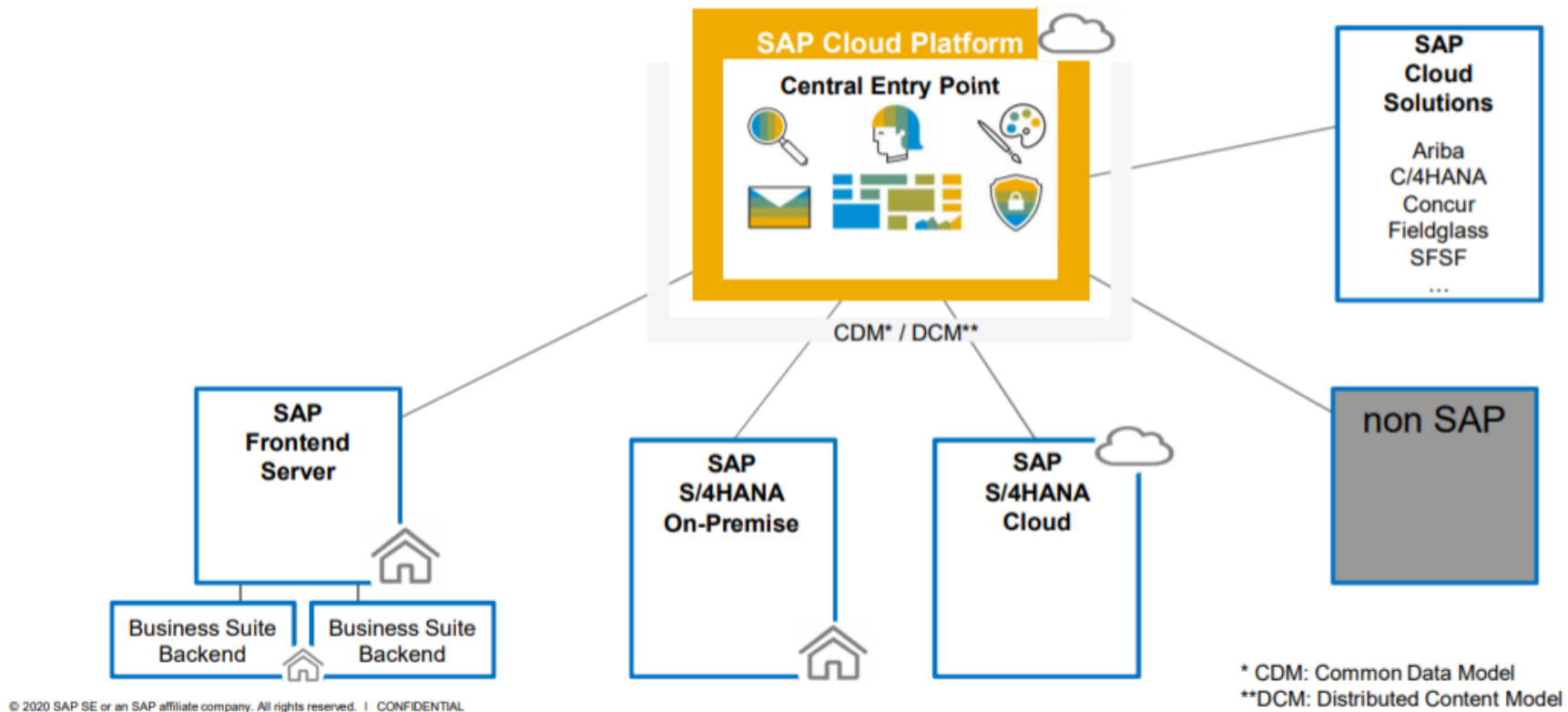
The screenshot illustrates the SAP Business Client interface with the Compact Header feature enabled. The header is organized into two rows. The top row includes the SAP logo, the page title 'My Sales Overview', and a search bar. The bottom row features a dropdown menu 'Standard' and a filter 'Filtered By (1): Display Currency'. The main content area displays various sales data, including 'Incoming Sales Orders', 'Open Sales Quotations', and 'Sales Order Fulfillment'. A red box highlights the header area, and a red arrow points to the 'Compact Header' label.

**Compact Header**

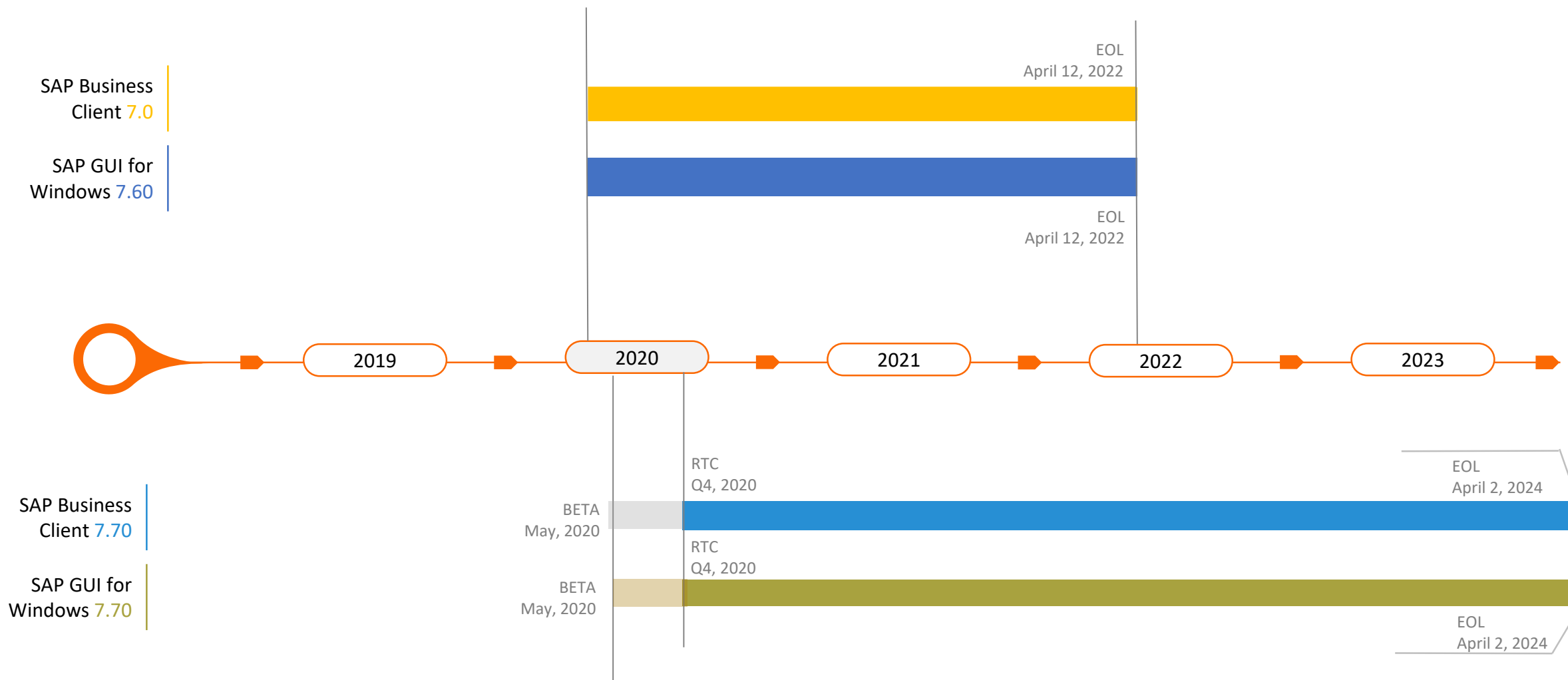
Show Tabs in a Separate Row

# SAP Business Client - Central Fiori Launchpad (cFLP) on SAP Cloud Platform

You can integrate the central Fiori launchpad (cFLP) in SAP BC. Whenever there is a navigation to a transaction running in an on-prem system, the transaction will be rendered with SAP GUI for Windows, otherwise with SAP GUI for HTML embedded in the FLP context.



# Support Timeline\*



\* Refer to [SAP Note 2302074 \(SAP Business Client\)](#) and [SAP Note 147519 \(SAP GUI for Windows\)](#) for details

# Questions?

For questions after this session, contact us at [\[sandra.thimme@sap.com\]](mailto:sandra.thimme@sap.com) and [\[ralph.resech@sap.com\]](mailto:ralph.resech@sap.com).

# Thank you.

Stay connected. Share your SAP experiences anytime, anywhere.  
Join the ASUG conversation on social media: **@ASUG365 #ASUG**

