

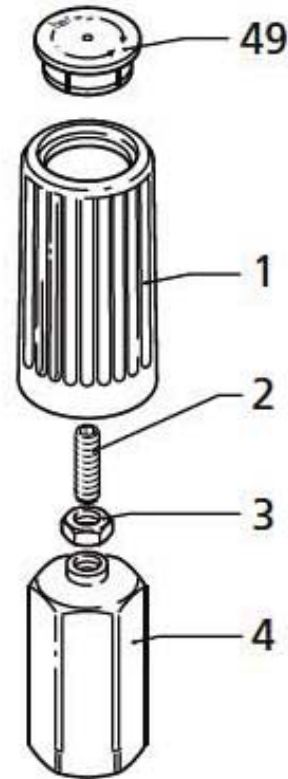
Instructions for Adjusting AR Minimatic 4/B

Please follow these easy steps to adjust the pressure:

- Step 1: Remove black cap (pos. #49)
- Step 2: Loosen nut (pos. #3) with 10mm wrench.
- Step 3: Turn brass (pos. #4) clockwise until it stops.
- Step 4: Start pump, watch pressure gauge and turn (pos. #2) using 3mm hex clockwise until recommended/rated pressure is obtained. Line pressure will be approximately 200 psi less than actual head pressure. **DO NOT** set line pressure to rated.
- Step 5: Release trigger and make sure there is minimal spike (200-300 psi) (Repeat this step two or three times).
- Step 6: Tighten nut (pos. #3) down against (pos. #4).
- Step 7: Replace black cap (pos. #49)
- NOTE: Now pressure can be decreased by turning black knob (pos. #1) counterclockwise, but the pressure cannot be increased to a rating higher than was set.

Mounting Bolt Torque Specifications

Inlet	354 in/lbs	30 ft/lbs
Discharge	266 in/lbs	22 ft/lbs



AR1540740

Nut holder for adjusting Minimatic Unloader