



# kirei

## MURA WALLCOVERING

### Acoustic Wallcovering

Mura is a simple, chic, and sleek acoustic solution for unforgiving surfaces. Designed by Woven Image® and distributed by Kirei, Mura is an innovative wallcovering made from recycled plastic bottles. With the flexible Mura fabric, it's easy to take on harsh echoes and uneven surfaces at the same time. By wrapping curved walls, corners, or desk partitions in beautiful Mura, you'll make the most of every wall.

Product shown: Mura Wallcovering in Pattern Haku 201



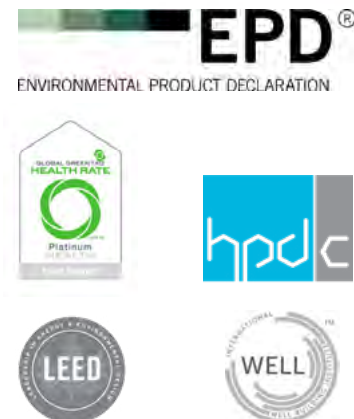
# Specs

Style	Roll Width	Roll Length	Thickness	Weight	LY/Roll
25M Roll (27.34 yards)	47.64 in.	984.3 in.	0.07 in	34 lbs	27.34 LY/roll

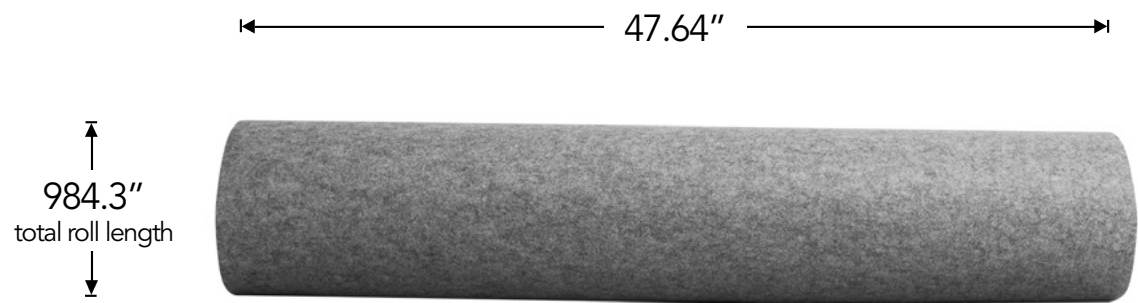
All specs refer to singular products and not multiples unless specified. Due to the nature of the material, cutting and fabrication process, minor dimensional variances may occur. Custom options available upon request. See configurations for design options. Regularly stocked lengths are 25M. 6M/6.57 LY and 105M/114.83 LY (solid colors only) rolls are special orders with a longer lead time, please contact Kirei for pricing.

Designer	Woven Image
Roll Thickness	0.07 in.
Material	100% PET (60% post-consumer recycled)
NRC	0.10
Fire Rating	ASTM E84 Class A
Custom Options	Available upon request
Lead Time	*Immediate shipment for colors in stock *For out of stock material: 10-14 weeks (Ocean) 4-6 weeks (Air freight)
VOC Emissions	CDPH (CA 01350) Compliant TVOC: <0.5 mg/m3 Ecospecifier GreenTag Compliant TVOC: 0.015 mg/m2/hr (ASTM D5116)

\*Actual lead times are determined when the project goes into production and can change based on production schedule and all quantities, color and thicknesses being in stock at time of order. See [Kirei's Product Lead Time Disclosure](#) for more information.



# Product Detail

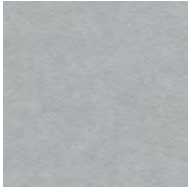


Front View



Side View

# Available Colors



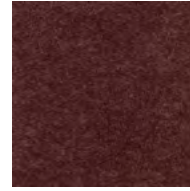
**101** Frost



**124** Ochre



**167** Cinnamon



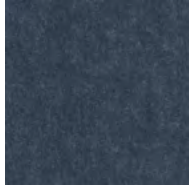
**269** Wine



**330** Ivy



**349** Vineyard



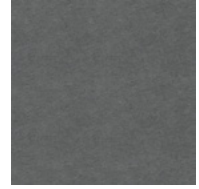
**365** Navy



**402** Pebble



**442** Grey



**444** Smoke



**454** Mushroom



**468** Vanilla



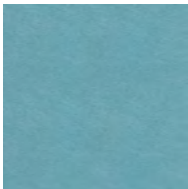
**487** Blush



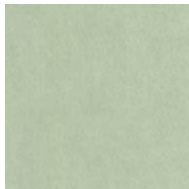
**542** Black



**550** Onyx



**551** Duck Egg



**577** Eucalyptus

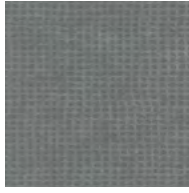


**908** Cream

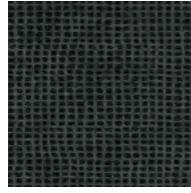
# Available Prints



**Haku 201** (metallic)



**Haku 447** (metallic)



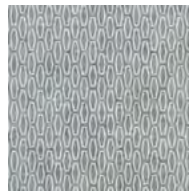
**Haku 554** (metallic)



**Kome 500**



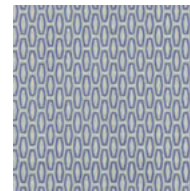
**Otto 108**



**Otto 141**



**Otto 258**



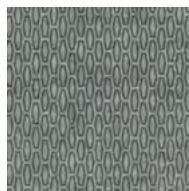
**Otto 273**



**Otto 362**



**Otto 404**



**Otto 447**



**Otto 468**



# Installation

When mounting, use standard construction adhesives (e.g. Liquid Nails/Titebond - NOT PVA glue). Clean and prepare surface per adhesive guidelines. Spread adhesive evenly on panel back, leaving 2" space at edges. Adhere to wall surface, providing bracing to hold material against surface per adhesive open time/instructions. See the [Mura Wallcovering Installation Guide](#) for more information.



Product shown: Mura Wallcovering in Color 349 (Vineyard)



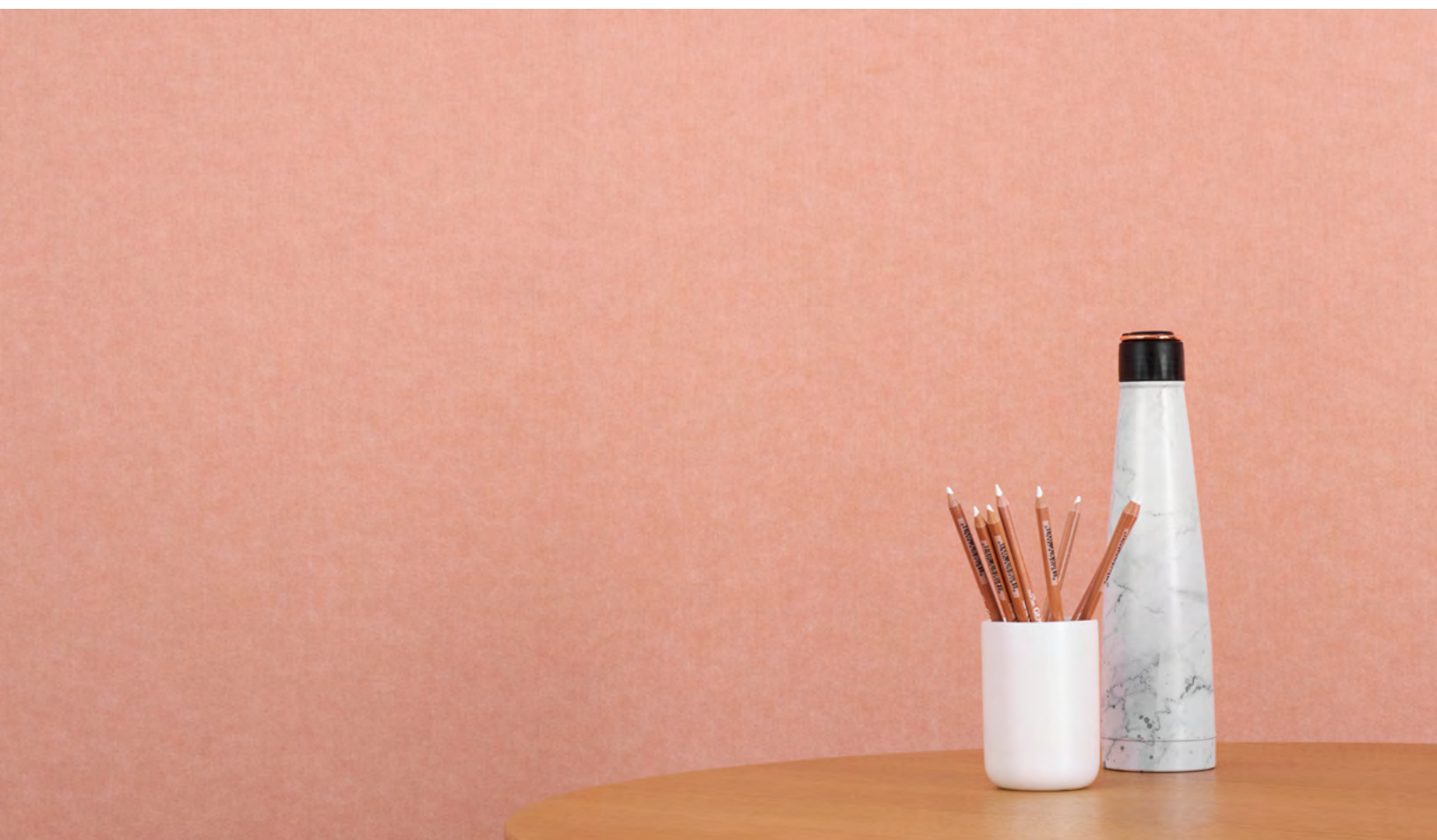


Product shown: Mura Wallcovering in Pattern Otto 273 & Color 454 (Mushroom)





Product shown: Mura Wallcovering in Pattern Otto 141



Product shown: Mura Wallcovering in Color 487 (Blush)





Product shown: Mura Wallcovering in Colors 124 (Ochre) & 442 (Grey)

# kirei

Learn more and request your free sample:

619.236.9924 | [sales@kireiusa.com](mailto:sales@kireiusa.com)

[kireiusa.com](http://kireiusa.com)

All images in this spec sheet are supplied by Woven Image®.