



# kirei

## UMI PANELS

### Embossed Acoustic Panels

A subtle embossed pattern and gentle convex profile give Umi a quiet sense of movement across the wall plane. Designed by Woven Image and distributed by Kirei, the panel is constructed from a PET backing panel containing a minimum of 50% recycled content and finished with a colored Mura surface. The formed front face adds texture, while the flat back allows for straightforward wall and ceiling installation.

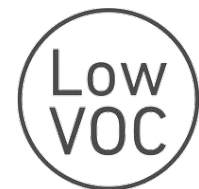
Product shown: Umi Embossed Panel in Cayenne

# Specs

Style	Standard (LxH)	Thickness	Weight	SF/Panel
Umi	44.5" x 110.2"	0.35"	16.53 lbs	34

All specs refer to singular products and not multiples unless specified. Due to the nature of the material, cutting and fabrication process, minor dimensional variances may occur.

Designer	Woven Image
Material	98.5% PET (50% recycled content) & 1.5% PE
Fire Rating	ASTM E84 Class A
VOC Emissions	CDPH Standard Method v1.2 (CA 01350) PASS TVOC Emissions Rate: <0.1 mg/m <sup>3</sup>

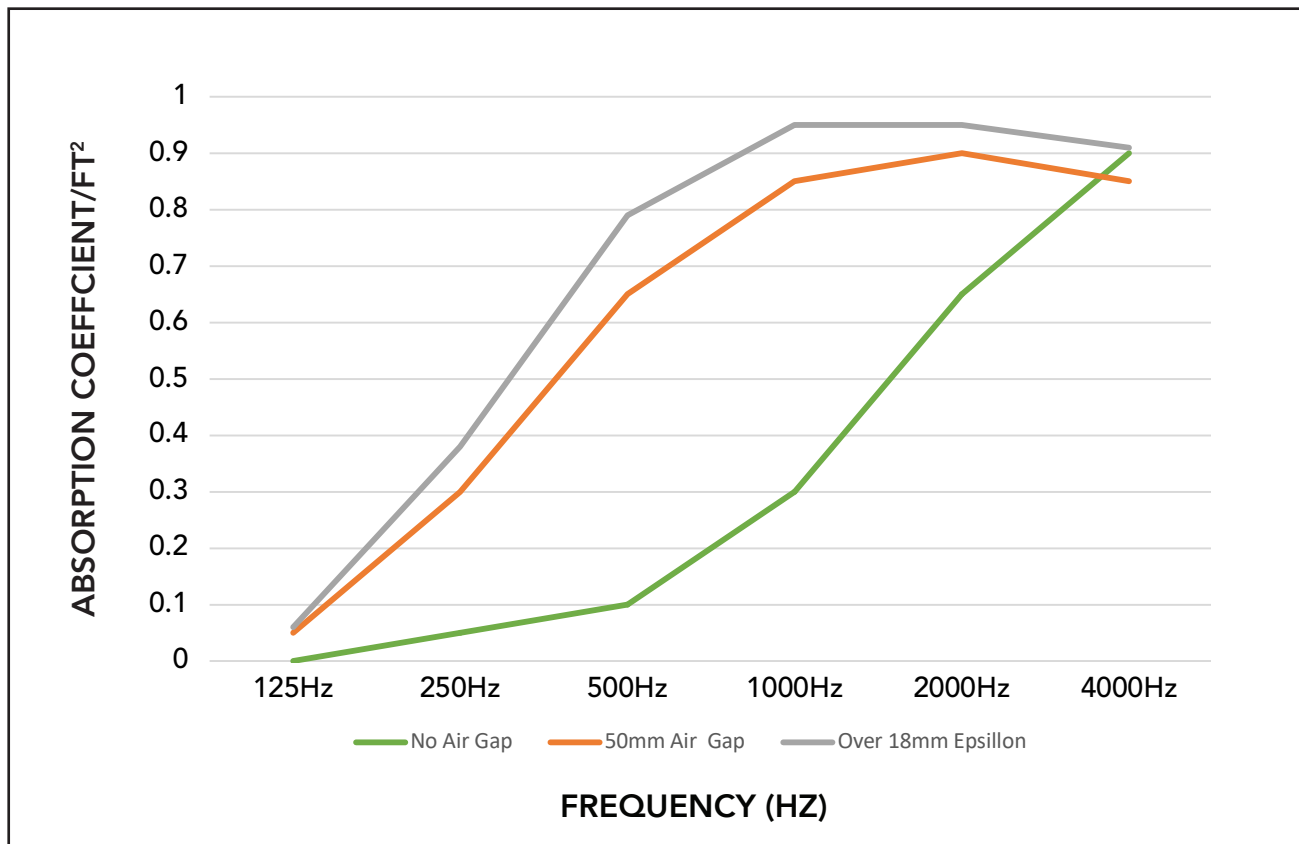


# Acoustic Data

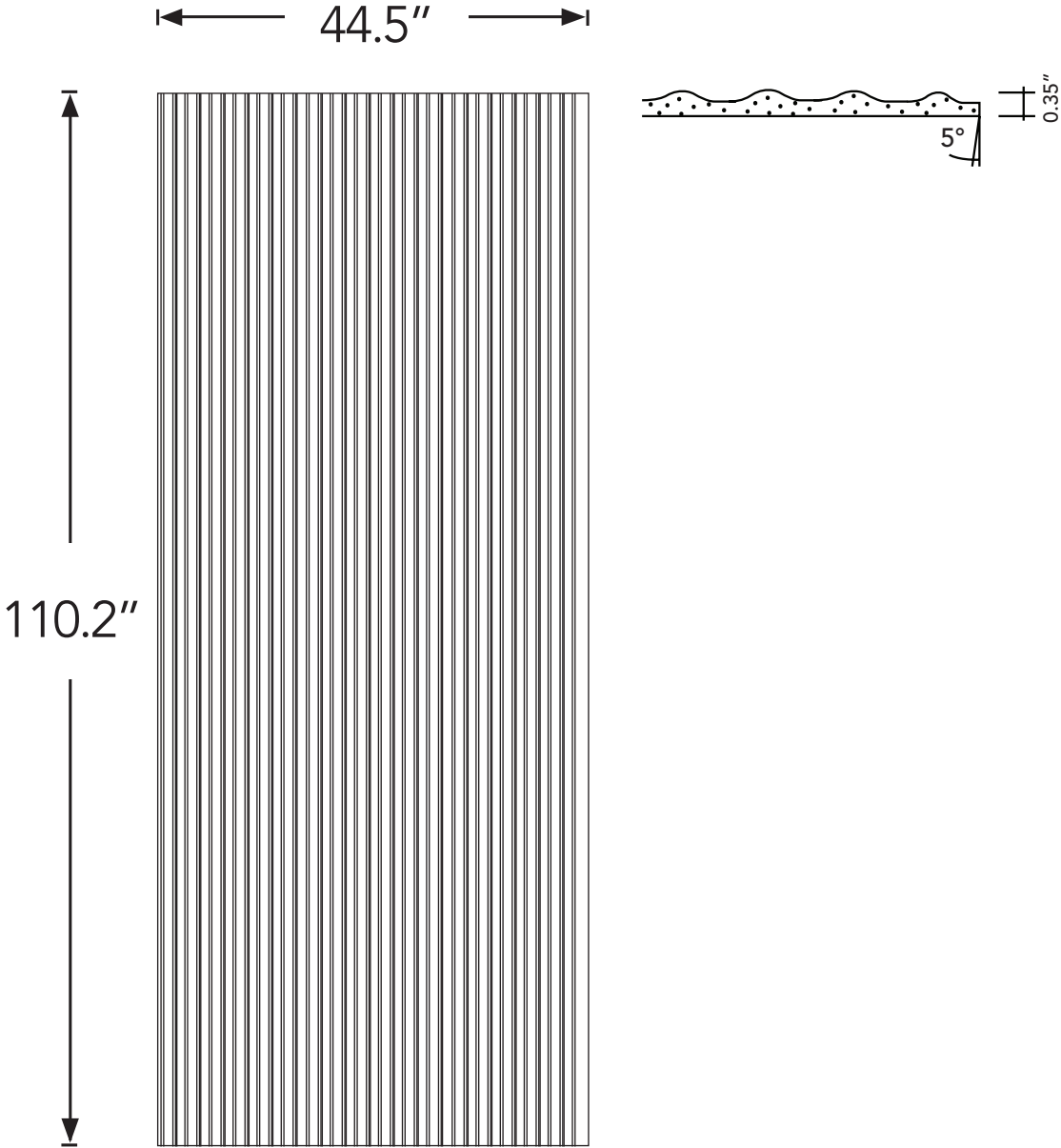
## Sound Absorption Embossed Panels

Abs. Coeff.	125Hz	250Hz	500Hz	1000Hz	2000Hz	4000Hz	NRC	SAA
No Air Gap	0	0.05	0.1	0.3	0.65	0.9	0.30	0.28
50mm Air Gap	0.05	0.3	0.65	0.85	0.9	0.85	0.70	0.68
Over 18mm Epsilon	0.06	0.38	0.79	0.95	0.95	0.91	0.75	0.77

Acoustic data is measured in Absorption Coefficient per square foot of material.



# Product Dimensions



Umi

# Available Colors in Umi



Cayenne 029



Wine 011



Cinnamon 006



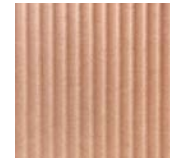
Nutmeg 047



Vanilla 028



Dusk 032



Blush 030



Ochre 004



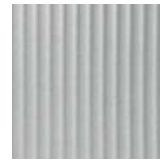
Butter 002



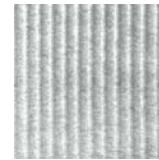
Cream 048



Mushroom 026



Frost 001



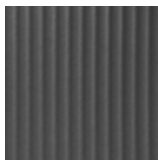
Chalk 034



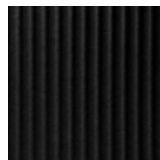
Sage 042



Pebble 022



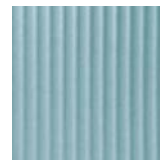
Slate 025



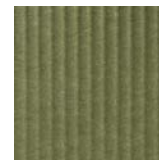
Onyx 036



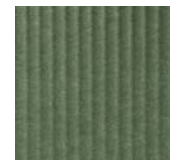
Mint 038



Duck Egg 037



Olive 021



Vineyard 017



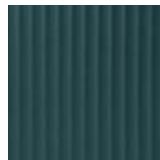
Orchid 011



Navy 019



Coronet 046



Ivy 015

Color variation between dye lots is a natural characteristic of recycled PET felt due to fiber mix and manufacturing variation. Slight differences between samples and finished products may occur, and exact color matching between dye lots/batches cannot be guaranteed.

# Installation

When mounting, use standard construction adhesives (e.g. Liquid Nails/Titebond - NOT PVA glue). Clean and prepare surface per adhesive guidelines. Spread adhesive evenly on panel back, leaving 2" space at edges. Adhere to wall surface, providing bracing to hold material against surface per adhesive open time/instructions. See the [Embossed Panel Series Installation Guide](#) for more information.



Product shown: Umi Embossed Panel in Vanilla



Product shown: Umi Embossed Panel in Nutmeg & Mushroom



Product shown: Umi Embossed Panel in Wine



Product shown: Umi Embossed Panel in Cayenne

# kirei

Learn more and request your free sample:

619.236.9924 | [sales@kireiusa.com](mailto:sales@kireiusa.com)

[kireiusa.com](http://kireiusa.com)

*All images in this spec sheet are supplied by Woven Image®.*