



# kirei

## SIDEBAR ACT

### Acoustic Tiles

From the office breakroom to a grand lobby entrance, Kirei Sidebar ACT helps you create unique ceilings in every space faster than ever. With the ability to play with linear and rotated configurations while mixing colors and Kirei Ink prints, Sidebar takes the ACT grid to new heights. Available in both 2x2 and 2x4 tile sizes.

Product shown: Sidebar ACT 2x2 in Ochre

# Specs

Style	Standard (LxW)	Depth	Weight/Unit	SF/Unit	Tiles/Box
2x2	23.6" x 23.6"	0.7"	1.75 lbs	4	8
2x4	23.6" x 47.2"	0.7"	3.5 lbs	8	4

All specs refer to singular products and not multiples unless specified. Due to the nature of the material, cutting and fabrication process, minor dimensional variances may occur.

Designer Kirei

Material Thickness 9mm

Material 100% PET (60% post-consumer recycled content)

Fire Rating ASTM E84 Class A

Custom Options Available upon request

Lead Time Please refer to [kireiusa.com](http://kireiusa.com) for updated lead times.

VOC Emissions CDPH (CA 01350) Compliant  
TVOC: <0.5 mg/m<sup>3</sup>

\*Actual lead times are determined when the project goes into production and can change based on production schedule and all quantities, color and thicknesses being in stock at time of order. See [Kirei's Product Lead Time Disclosure](#) for more information.



**Declare.**

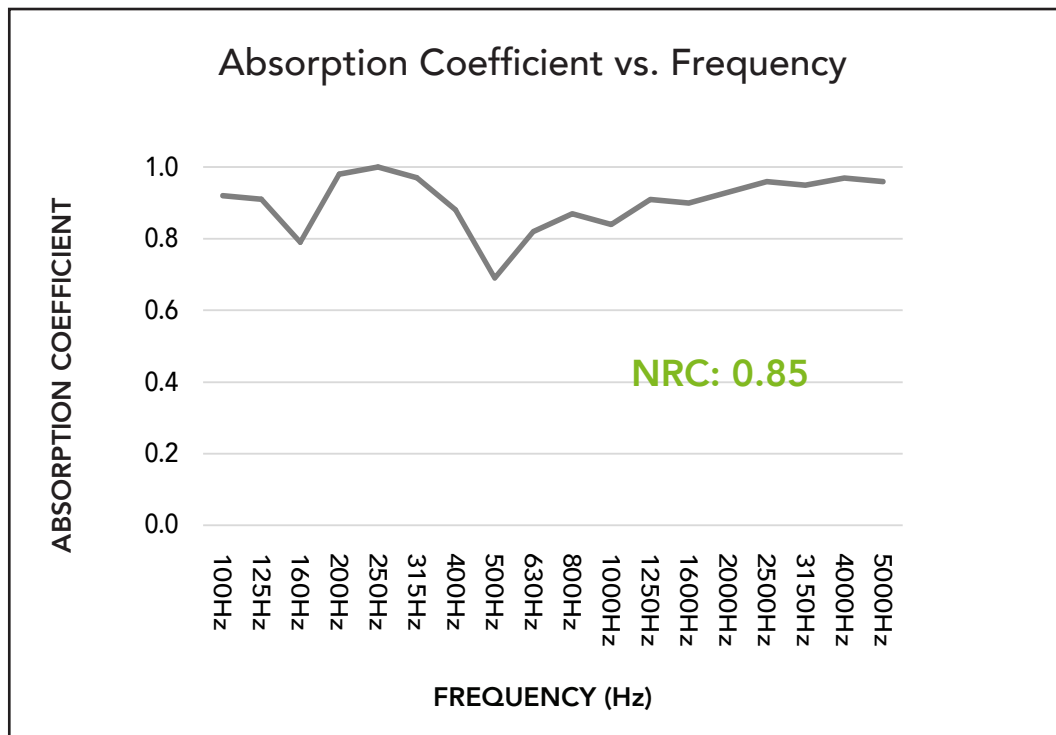


# Acoustic Data

## Sound Absorption

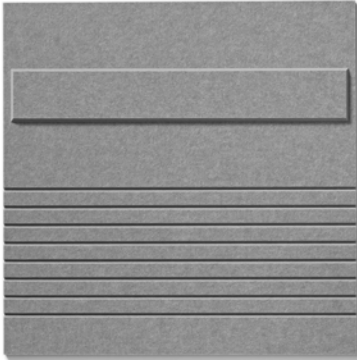
Frequency	125Hz	250Hz	500Hz	1000Hz	2000Hz	4000Hz	NRC	SAA
Absorption Coefficient	0.91	1.00	0.69	0.84	0.93	0.97	0.85	0.90

Acoustic data is measured in Absorption Coefficient per square foot of material using Type E-400 Mounting. For more information, see the [full acoustic test](#).

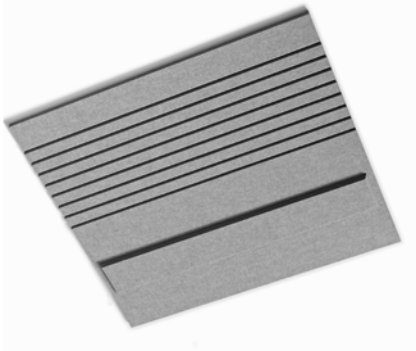


# Product Dimensions

← 23.6" →



↑ 23.6" ↓



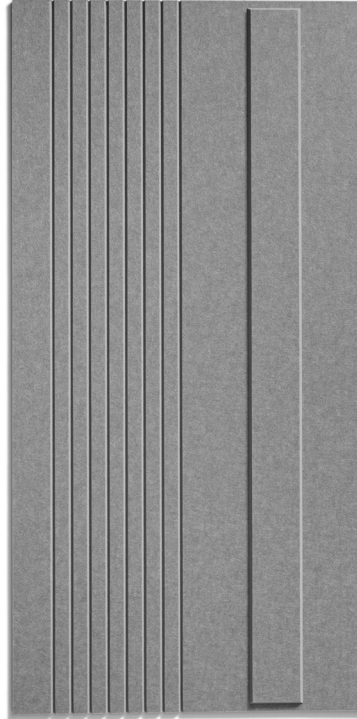
Sidebar ACT 2x2



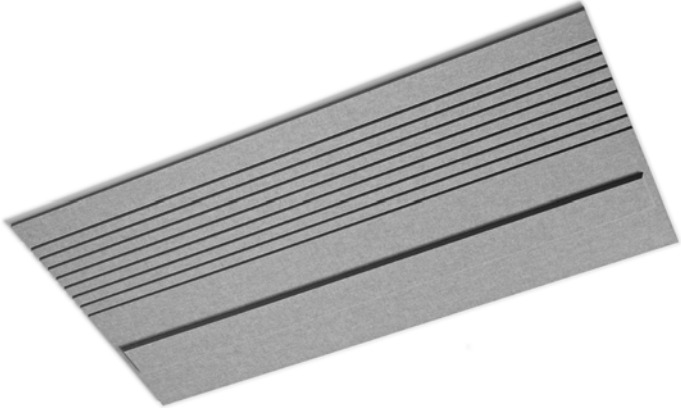
0.7"



← 23.6" →



↑ 47.2" ↓



Sidebar ACT 2x4

# Available Colors



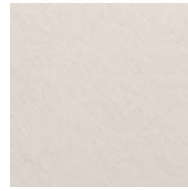
**Wine 009**  
9mm



**Cinnamon 006**  
9mm



**Ochre 004**  
9mm



**Cream 048**  
9mm



**Mushroom 026**  
9mm



**Grey 023**  
9mm



**Navy 019**  
9mm



**Black 035**  
9mm



**Slate 025**  
9mm



**Pebble 022**  
9mm



**Sage 042**  
9mm



**Frost 001**  
9mm



**White 033**  
9mm



**Duck Egg 037**  
9mm



**Vineyard 017**  
9mm

Color variation between dye lots is a natural characteristic of recycled PET felt due to the manufacturing process. Slight differences between samples and finished product may occur.

# Installation

Sidebar tiles easily fit into a standard 15/16" ACT ceiling grid. Simply remove any existing tile and install Sidebar ACT in its place. If you have a different ceiling grid (such as 9/16"), contact us for color options and customization to match your needs. For more information, see the [Sidebar ACT Installation Guide](#).

## Custom Printing with Kirei Ink

Sidebar ACT can be custom printed in house with Kirei Ink. We would love to work with you to print your own custom color, pattern, graphic or material. Reach out and our team will be ready to assist!

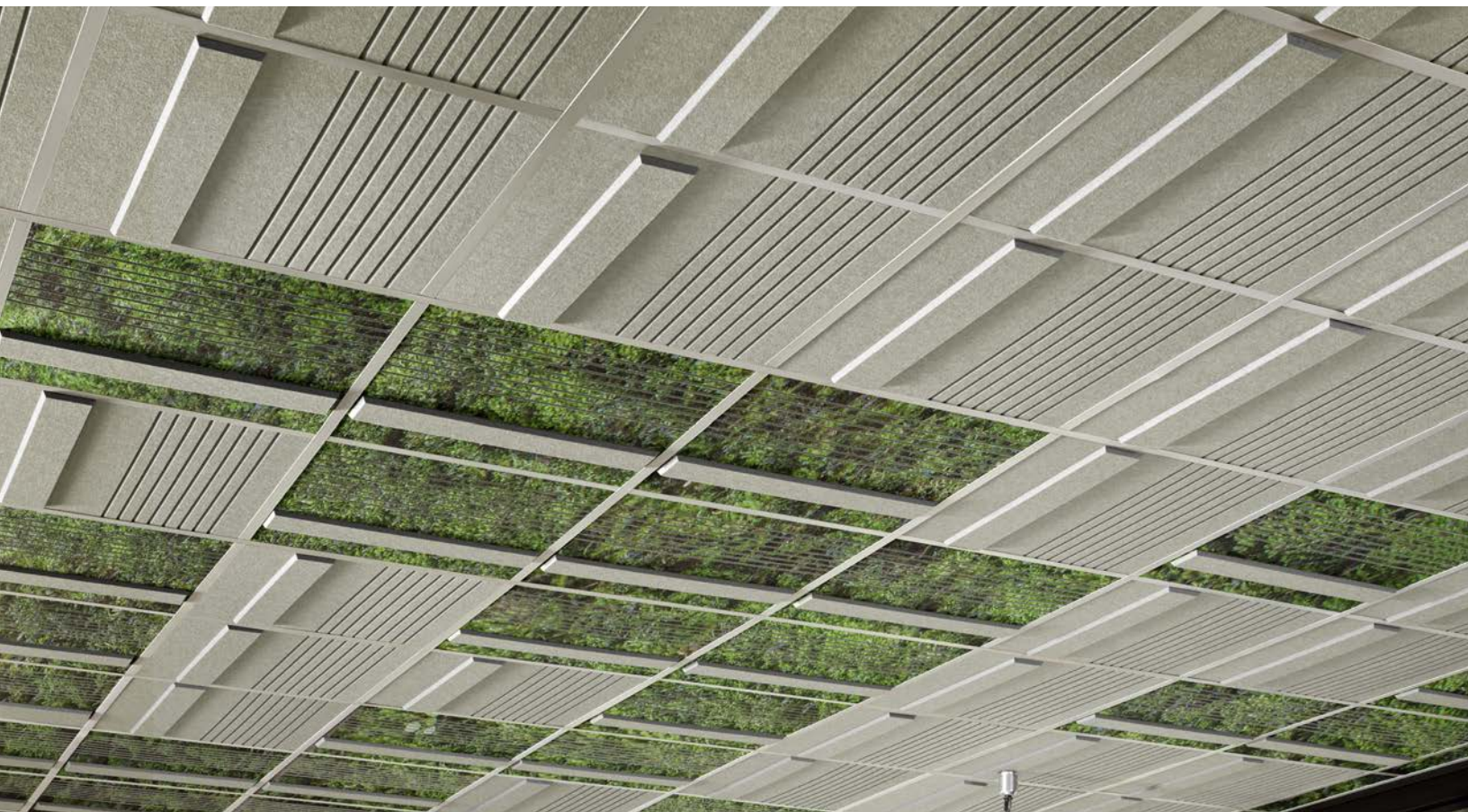
*Please note: Kirei requires written permission from the copyright holder in order to reproduce any copyrighted work. Professional photographs cannot be reproduced without written permission from the photographer.*



Product shown: Gather ACT 2x2 in Charred Oak on Cream



Product shown: Sidebar ACT 2x2 in Duck Egg



Product shown: Hatch ACT 2x2 printed with Kirei Ink Custom Moss on Sage



Product shown: Sidebar ACT 2x2 in Duck Egg and Mushroom

# kirei

Learn more and request your free sample:

619.236.9924 | [sales@kireiusa.com](mailto:sales@kireiusa.com)

[kireiusa.com](http://kireiusa.com)