



kirei

NALU PANELS

Embossed Acoustic Panels

Inspired by the movement of water, Nalu uses a sculpted, embossed surface to create texture and dimension across walls and ceilings. Designed by Woven Image and distributed by Kirei, the panel combines a PET backing panel containing a minimum of 50% recycled content with a colored Mura surface finish. Its formed profile brings visual interest to interior spaces while contributing to acoustic performance.

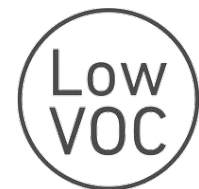
Product shown: Nalu Embossed Panel in Latte

Specs

Style	Standard (LxH)	Thickness	Weight	SF/Panel
Nalu	44.5" x 110.2"	0.35"	16.7 lbs	34

All specs refer to singular products and not multiples unless specified. Due to the nature of the material, cutting and fabrication process, minor dimensional variances may occur.

Designer	Woven Image
Material	98.5% PET (50% recycled content) & 1.5% PE
Fire Rating	ASTM E84 Class A
VOC Emissions	CDPH Standard Method v1.2 (CA 01350) PASS TVOC Emissions Rate: <0.1 mg/m ³

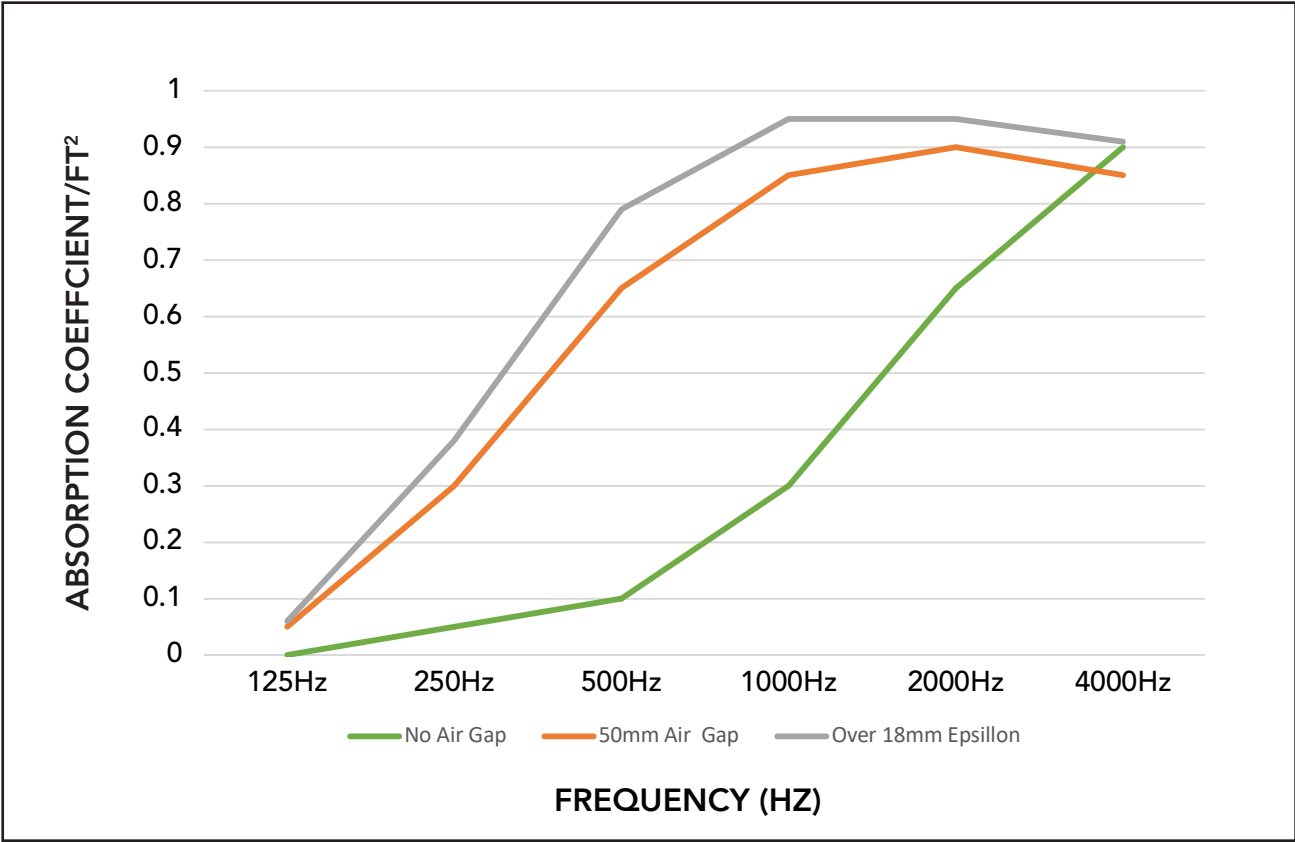


Acoustic Data

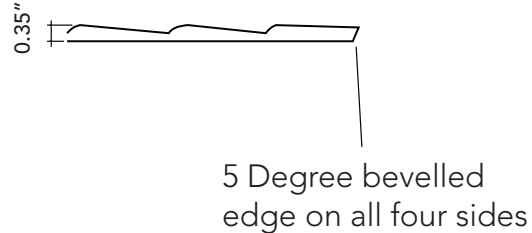
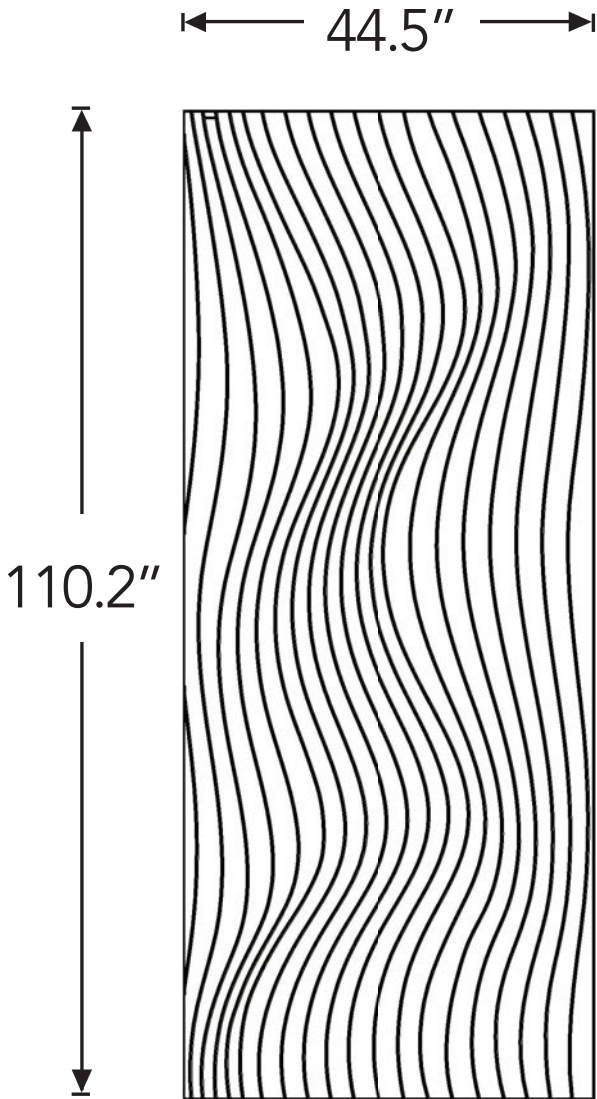
Sound Absorption Embossed Panels

Abs. Coeff.	125Hz	250Hz	500Hz	1000Hz	2000Hz	4000Hz	NRC	SAA
No Air Gap	0	0.05	0.1	0.3	0.65	0.9	0.30	0.28
50mm Air Gap	0.05	0.3	0.65	0.85	0.9	0.85	0.70	0.68
Over 18mm Epsilon	0.06	0.38	0.79	0.95	0.95	0.91	0.75	0.77

Acoustic data is measured in Absorption Coefficient per square foot of material.

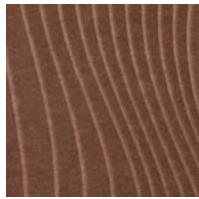


Product Dimensions

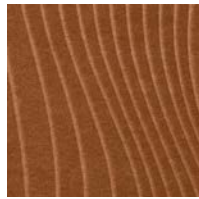


Nalu

Available Colors in Nalu



Cayenne 029



Cinnamon 006



Nutmeg 047



Latte 055



Vanilla 028



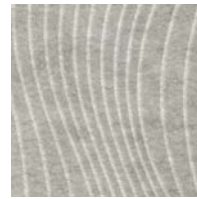
Dusk 032



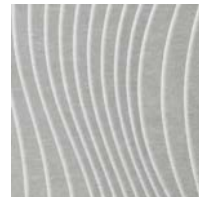
Ochre 004



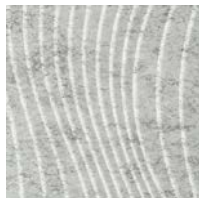
Cream 048



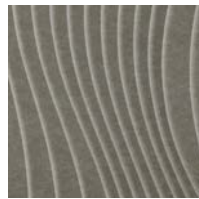
Mushroom 026



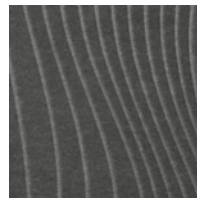
Frost 001



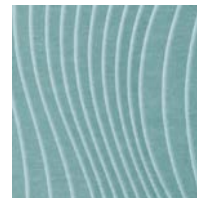
Chalk 034



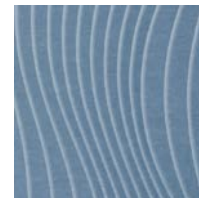
Pebble 022



Slate 025



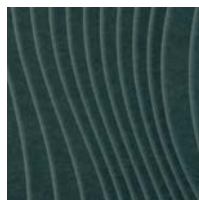
Duck Egg 037



Coronet 046



Navy 019



Ivy 015



Vineyard 017



Sage 042

Color variation between dye lots is a natural characteristic of recycled PET felt due to fiber mix and manufacturing variation. Slight differences between samples and finished products may occur, and exact color matching between dye lots/batches cannot be guaranteed.

Installation

When mounting, use standard construction adhesives (e.g. Liquid Nails/Titebond - NOT PVA glue). Clean and prepare surface per adhesive guidelines. Spread adhesive evenly on panel back, leaving 2" space at edges. Adhere to wall surface, providing bracing to hold material against surface per adhesive open time/instructions. See the [Embossed Panel Series Installation Guide](#) for more information.



Product shown: Nalu Embossed Panel in Latte



Product shown: Nalu Embossed Panel in Duck Egg



Product shown: Nalu Embossed Panel in Sage



Product shown: Nalu Embossed Panel in Latte and Cayenne

kirei

Learn more and request your free sample:

619.236.9924 | sales@kireiusa.com

kireiusa.com

All images in this spec sheet are supplied by Woven Image®.