



kirei

ECHOPANEL® PRINTS

Acoustic PET Panels

Increase acoustic absorption and visual allure with EchoPanel Prints, printed acoustic panels designed by Woven Image®. Composed of 100% PET plastic containing at least 60% post-consumer content, designers can create truly memorable spatial experiences using EchoPanel Prints as panels or crafted into Kirei products.

Product shown: EchoPanel Prints in Astro 270

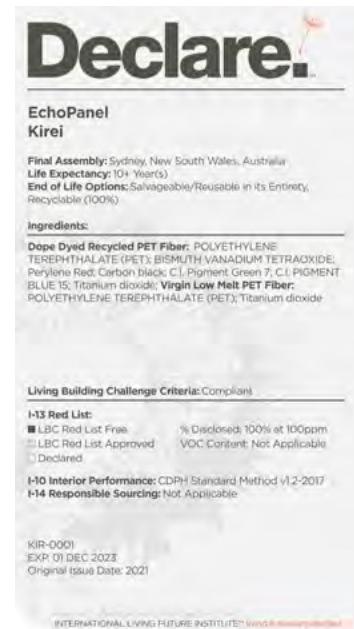
Specs

Style	Standard (LxH)	Thickness	Weight	SF/Panel
12mm Panel	46 in. x 108 in.	0.47 in.	18 lbs	36.2

All specs refer to singular products and not multiples unless specified. Due to the nature of the material, cutting and fabrication process, minor dimensional variances may occur. Custom options available upon request. EchoPanel is sold individually and ships flat. Please note that not all colors come in all thicknesses. Refer to the sample board for color and size availability.

Designer	Woven Image
Panel Thickness	12mm
Material	EchoPanel®, a registered trademark of Woven Image®, is PET felt made with at least 60% post-consumer content.
Fire Rating	ASTM E84 Class A
Custom Options	Available upon request
Lead Time	*10-14 weeks (Ocean) *4-6 weeks (Air freight)
VOC Emissions	CDPH (CA 01350) Compliant TVOC: <0.5 mg/m ³ Ecospecifier GreenTag Compliant TVOC: 0.015 mg/m ² /hr (ASTM D5116)

*Actual lead times are determined when the project goes into production and can change based on production schedule and all quantities, color and thicknesses being in stock at time of order. See [Kirei's Product Lead Time Disclosure](#) for more information.

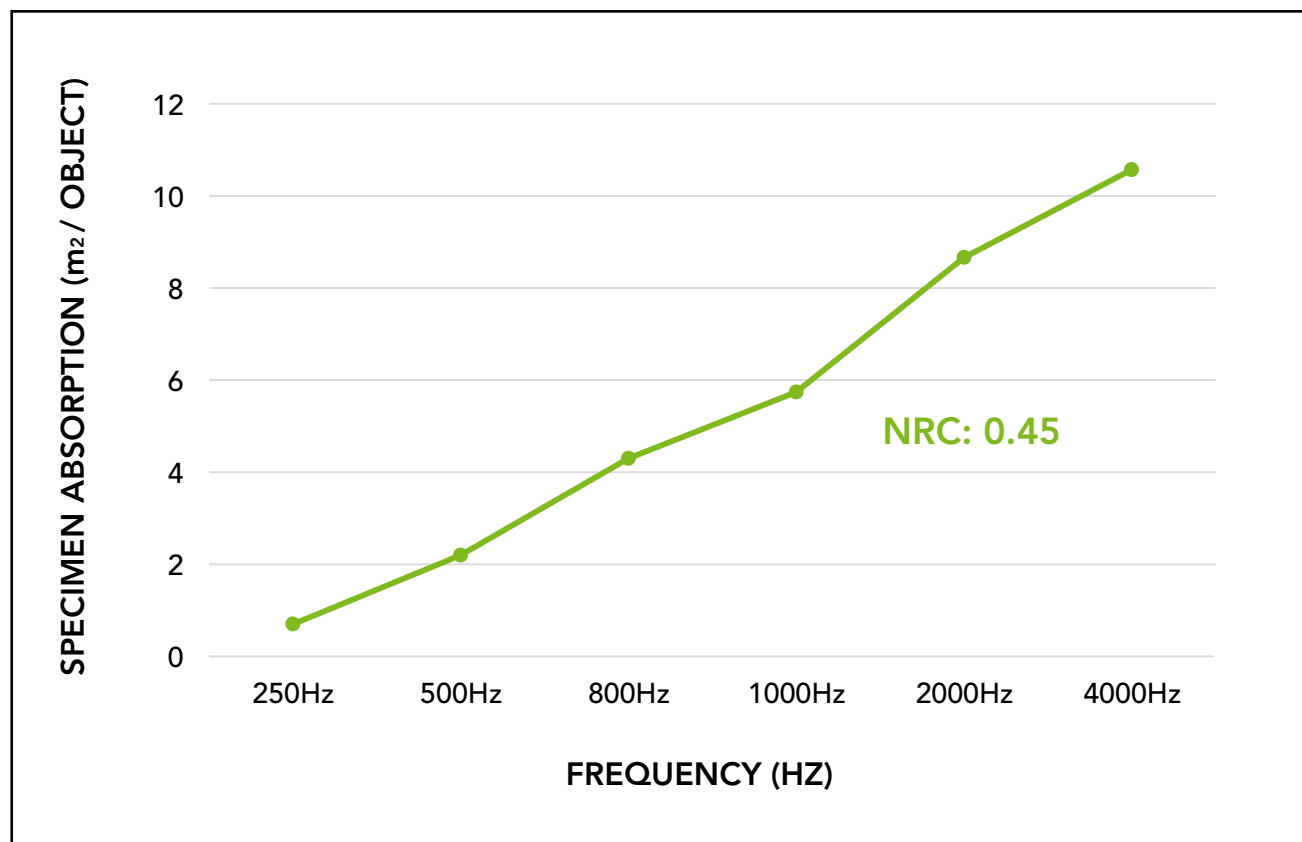


Acoustic Data

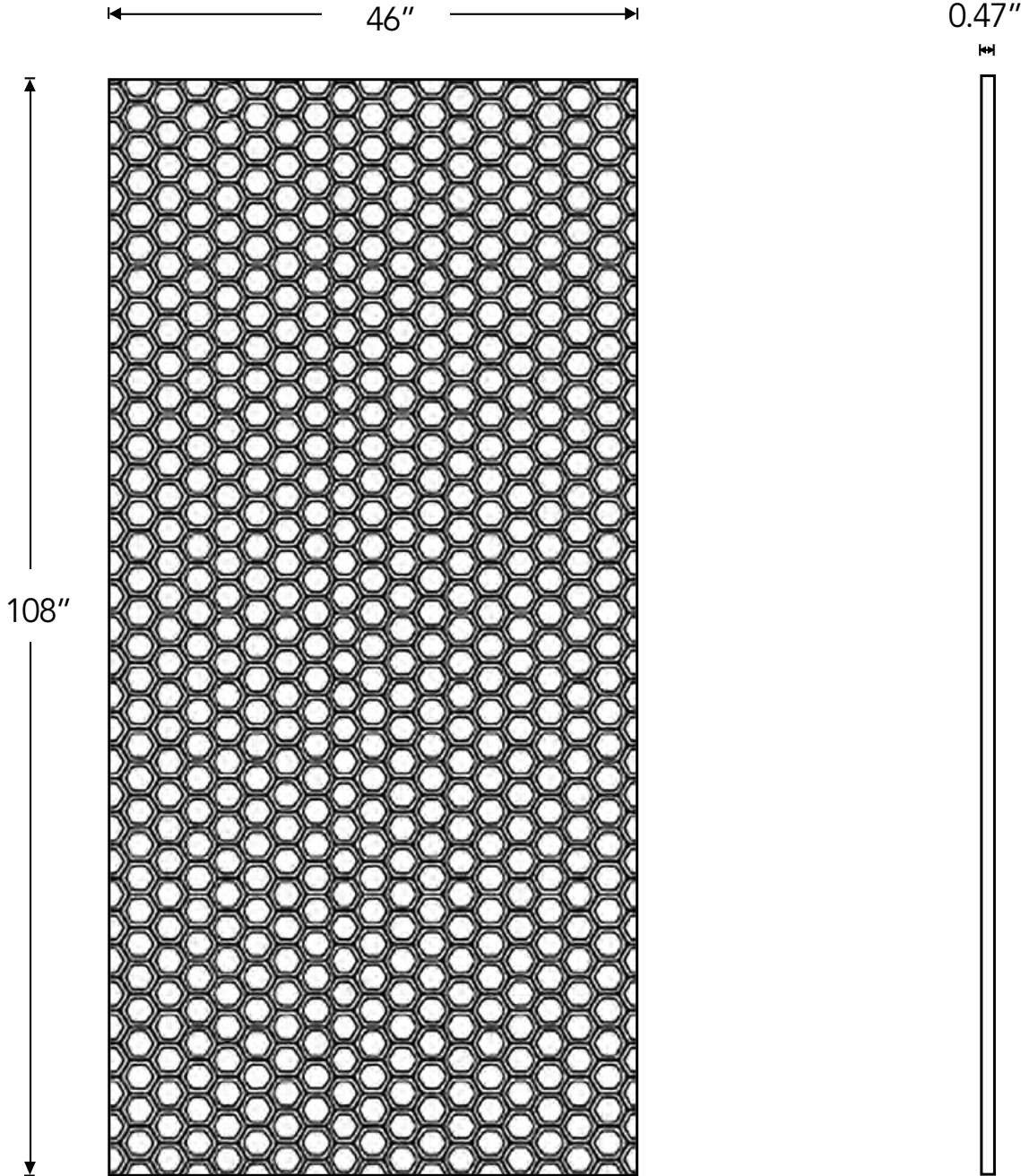
Sound Absorption

Frequency	250Hz	500Hz	800Hz	1000Hz	2000Hz	4000Hz	NRC
m ² /Object	0.70	2.20	4.30	5.74	8.66	10.57	0.45 (no air gap)
m ² /Object (20mm air gap)	1.51	4.33	7.35	8.56	9.97	9.97	0.60 (20mm air gap)
m ² /Object (50mm air gap)	3.32	7.35	9.87	10.07	9.67	10.07	0.75 (50mm air gap)
m ² /Object (1" fiberglass)	4.33	6.78	6.66	6.58	6.47	7.10	0.90 (1" fiberglass)
m ² /Object (2" fiberglass)	6.56	7.35	7.03	6.49	6.60	6.80	1.00 (2" fiberglass)

Acoustic data is measured in Sabins per 12mm EchoPanel.



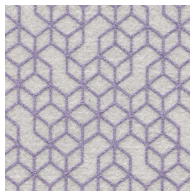
Product Dimensions



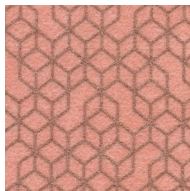
Front View

Side View

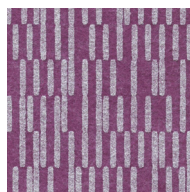
Available Prints



Astro 270



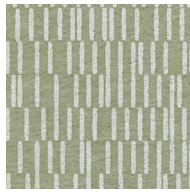
Astro 489



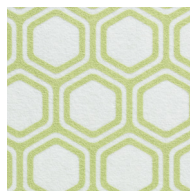
Frequency 213



Frequency 301



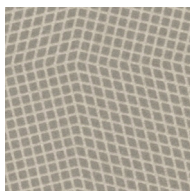
Frequency 577



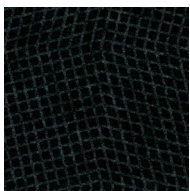
Hex 111



Hex 542



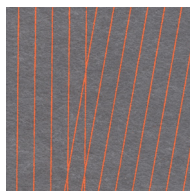
Tilt 402



Tilt 545



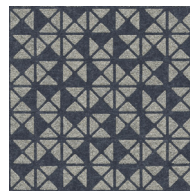
Trapeze 107



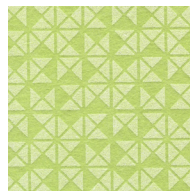
Trapeze 150



Trapeze 454



Trio 365



Trio 381

Installation

When mounting, use standard construction adhesives (e.g. Liquid Nails/Titebond - NOT PVA glue). Clean and prepare surface per adhesive guidelines. Spread adhesive evenly on panel back, leaving 2" space at edges. Adhere to wall surface, providing bracing to hold material against surface per adhesive open time/instructions. See the [PET Panels Installation Guide](#) for more information.



Product shown: EchoPanel Prints in Frequency 213



Product shown: EchoPanel Prints in Tilt 402

kirei

Learn more and request your free sample:
619.236.9924 | sales@kireiusa.com [kireiu-
sa.com](http://kireiusa.com)

All images in this spec sheet are supplied by Woven Image®.