



**kirei** ECHOLINE®

## 45 PANELS

### Etched Acoustic Panels

Energize spaces with dynamic lines that are going places. 45 Panel's simple, consistent groove pattern adds subtle or striking dimension to wall or ceiling surfaces. Easy to install, 45 Panel's controlled playfulness is linear design that fixes acoustic imbalances for happier, healthier occupants.

# Specs

Style	Standard (LxH)	Thickness	Weight	SF/Panel
45 (0.5) (12mm)	45.3" x 107.5"	0.47"	19 lbs	35.5
45 (0.5) (24mm)	45.3" x 107.5"	0.94"	21 lbs	35.5
45 (1.0) (12mm)	45.3" x 107.5"	0.47"	19 lbs	35.5
45 (1.0) (24mm)	45.3" x 107.5"	0.94"	21 lbs	35.5
45 (2.0) (12mm)	45.3" x 107.5"	0.47"	19 lbs	35.5
45 (2.0) (24mm)	45.3" x 107.5"	0.94"	21 lbs	35.5
45 (4.0) (12mm)	45.3" x 107.5"	0.47"	19 lbs	35.5
45 (4.0) (24mm)	45.3" x 107.5"	0.94"	21 lbs	35.5

All specs refer to singular products and not multiples unless specified. Due to the nature of the material, cutting and fabrication process, minor dimensional variances may occur. Custom options available upon request. 45 Panels are sold individually and ship flat.

Designer Kirei

Material 100% PET (60% post-consumer recycled content)

Fire Rating ASTM E84 Class A

Custom Options Available upon request

Lead Time Please refer to [kireiusa.com](http://kireiusa.com) for updated lead times.

VOC Emissions CDPH (CA 01350) Compliant  
TVOC: <0.5 mg/m<sup>3</sup>

\*Actual lead times are determined when the project goes into production and can change based on production schedule and all quantities, color and thicknesses being in stock at time of order. See [Kirei's Product Lead Time Disclosure](#) for more information.

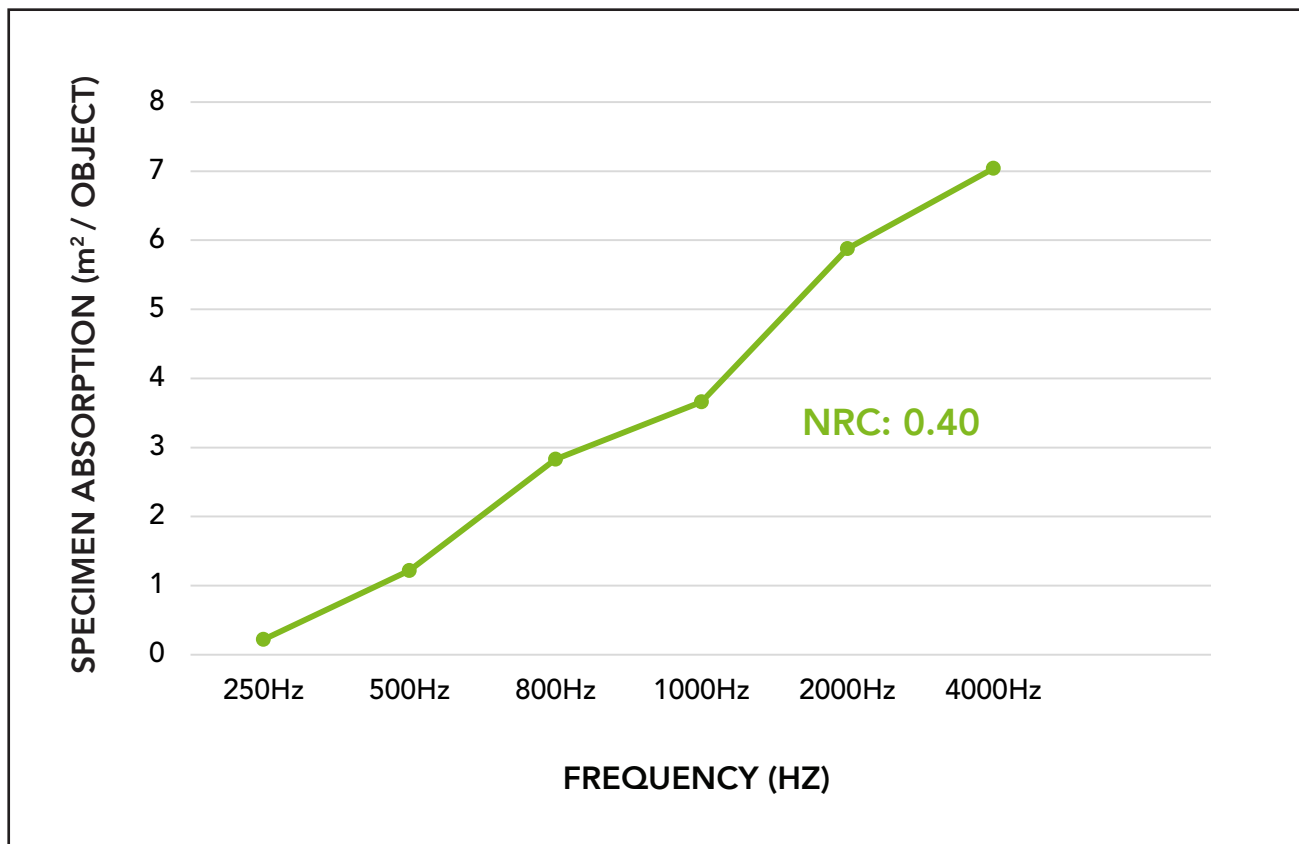


# Acoustic Data

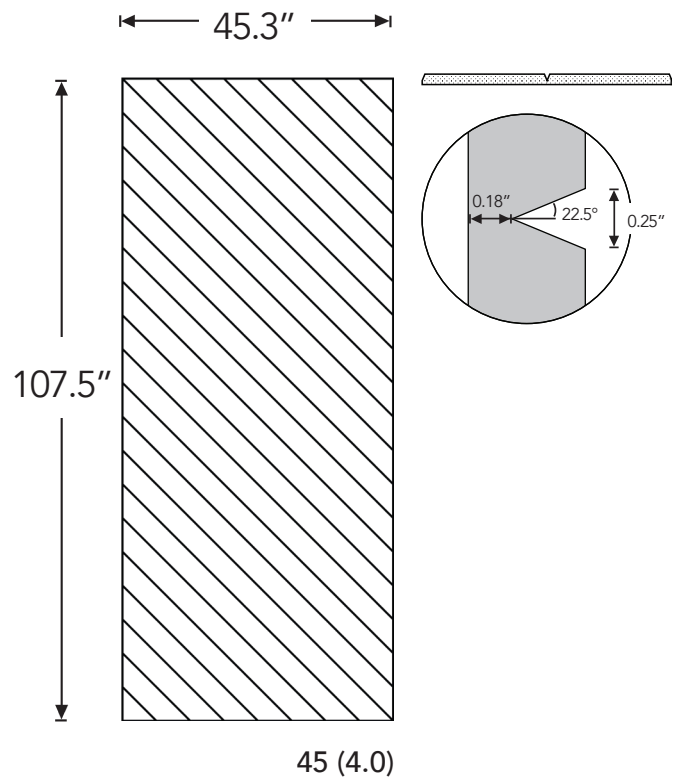
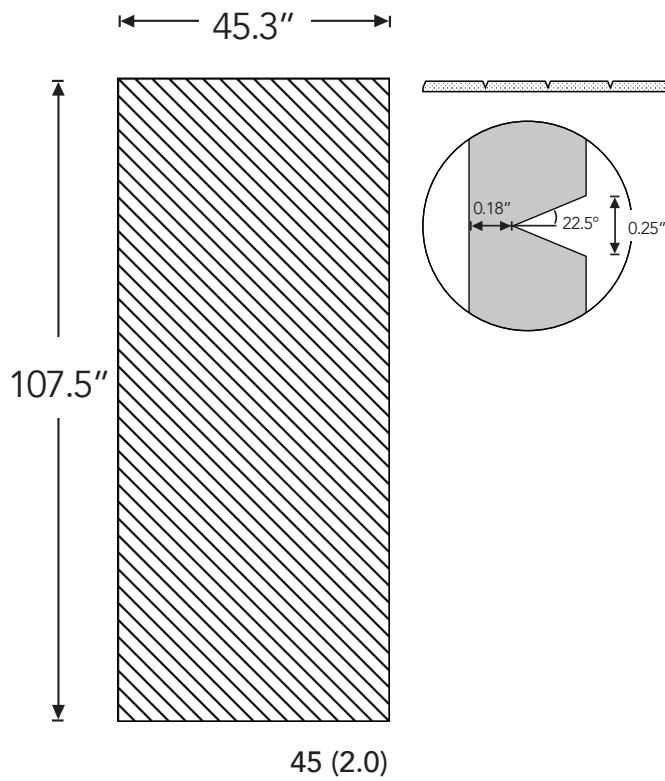
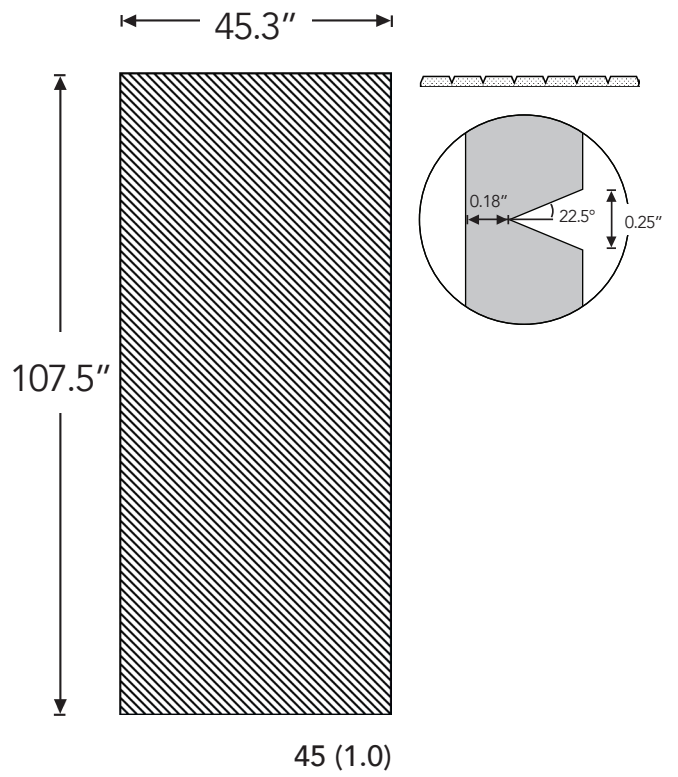
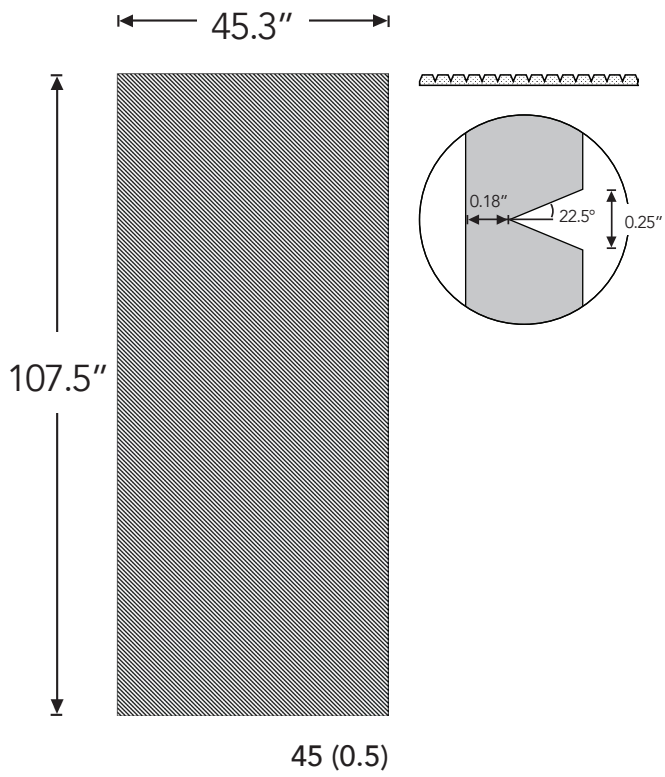
## Sound Absorption Groovy 3.0 Panels

Frequency	250Hz	500Hz	800Hz	1000Hz	2000Hz	4000Hz	NRC
m <sup>2</sup> /Object	0.22	1.22	2.83	3.66	5.88	7.04	0.40

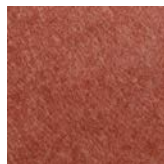
Acoustic data is measured in Sabins per Groovy 3.0 panel with 12mm thickness.



# Product Dimensions



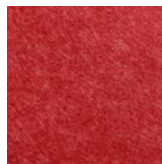
# Available Colors



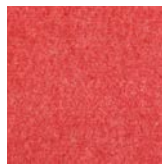
**Cayenne 029**  
12mm



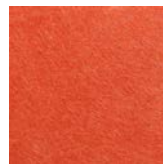
**Wine 009**  
12mm | 24mm



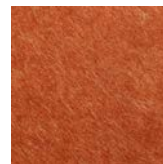
**Rouge 007**  
12mm



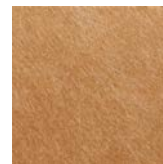
**Crimson 059**  
12mm



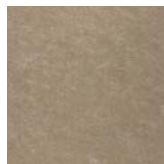
**Mandarin 013**  
12mm



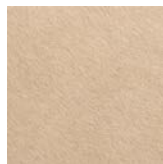
**Cinnamon 006**  
12mm | 24mm



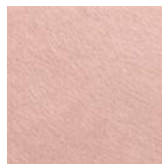
**Nutmeg 047**  
12mm



**Latte 055**  
12mm



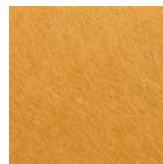
**Vanilla 028**  
12mm | 24mm



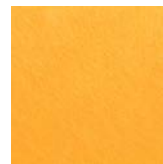
**Dusk 032**  
12mm



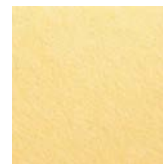
**Blush 030**  
12mm | 24mm



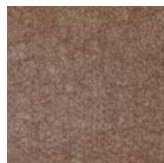
**Ochre 004**  
12mm | 24mm



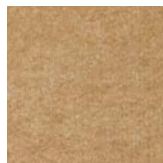
**Sunshine 003**  
12mm



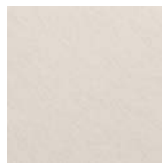
**Butter 002**  
12mm



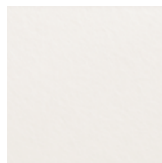
**Cappuccino 062**  
12mm



**Sepia 063**  
12mm



**Cream 048**  
12mm | 24mm



**White 033**  
12mm | 24mm



**Mushroom 026**  
12mm | 24mm



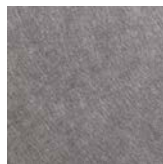
**Frost 001**  
12mm | 24mm



**Grey 023**  
12mm | 24mm



**Millennium 061**  
12mm



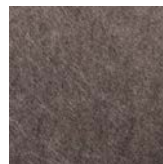
**Smoke 024**  
12mm



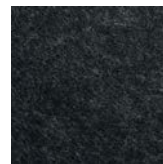
**Sage 042**  
12mm | 24mm



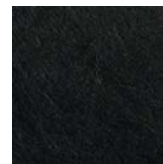
**Pebble 022**  
12mm | 24mm



**Slate 025**  
12mm | 24mm



**Black 035**  
12mm | 24mm



**Onyx 036**  
12mm | 24mm



**Mint 038**  
12mm



**Duck Egg 037**  
12mm



**Pacific 045**  
12mm | 24mm



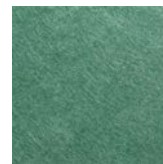
**Lime Splice 020**  
12mm



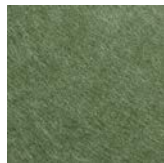
**Pistachio 041**  
12mm



**Olive 021**  
12mm | 24mm



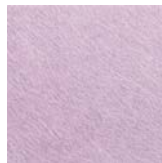
**Jade 016**  
12mm



**Vineyard 017**  
12mm



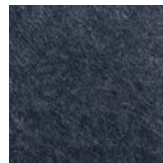
**Seaweed 056**  
12mm



**Orchid 011**  
12mm | 24mm



**Amethyst 060**  
12mm



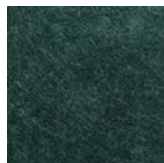
**Navy 019**  
12mm | 24mm



**Coronet 046**  
12mm



**Lapis 058**  
12mm



**Ivy 015**  
12mm | 24mm



**Lavender 012**  
12mm

Color variation between dye lots is a natural characteristic of recycled PET felt due to the manufacturing process. Slight differences between samples and finished product may occur.

# Installation

When mounting, use standard construction adhesives (e.g. Liquid Nails/Titebond - NOT PVA glue). Clean and prepare surface per adhesive guidelines. Spread adhesive evenly on panel back, leaving 2" space at edges. Adhere to wall surface, providing bracing to hold material against surface per adhesive open time/instructions. For more information, see the [EchoLine Panels Installation Guide](#).

## Custom Printing with Kirei Ink

45 Panels can be custom printed in house with Kirei Ink. We would love to work with you to print your own custom color, pattern, graphic or material. Reach out and our team will be ready to assist!

Please note: Kirei requires written permission from the copyright holder in order to reproduce any copyrighted work. Professional photographs cannot be reproduced without written permission from the photographer.



Product shown: Diamond Tile, Racetrack Path Tile, and Barcode Tile in Kirei Ink (Travertine)



Product shown: 45 (2.0) Panels in Orchid

# kirei

Learn more and request your free sample:

619.236.9924 | [sales@kireiusa.com](mailto:sales@kireiusa.com)

[kireiusa.com](http://kireiusa.com)