



kirei

2" UTILITY PET PANELS

High-absorption Acoustic Panels

Kirei's highest performing acoustic panel. With a towering 121" height for floor-to-ceiling installation, this utilitarian panel brings a high NRC, helping designers and contractors deliver performance driven sound absorption for very quiet spaces. Made in America from 100% PET with at least 55% post-consumer recycled content.

Product shown: 2" Utility PET Panels in Light Gray

Specs

Style	Standard (LxH)	Thickness	Weight	SF/Panel
2" Panel	49" x 121"	2"	82.34 lbs	41.17

All specs refer to singular products and not multiples unless specified. Due to the nature of the material and fabrication process, a size tolerance of $\pm 0.25"$ may occur. 2" Utility PET Panels are sold individually and ship flat. Refer to the sample board for color and size availability.

Material 100% PET (55% recycled content)

Fire Rating ASTM E84 Class A

VOC Emissions CDPH (CA 01350) Compliant
TVOC: $< 0.5 \text{ mg/m}^3$

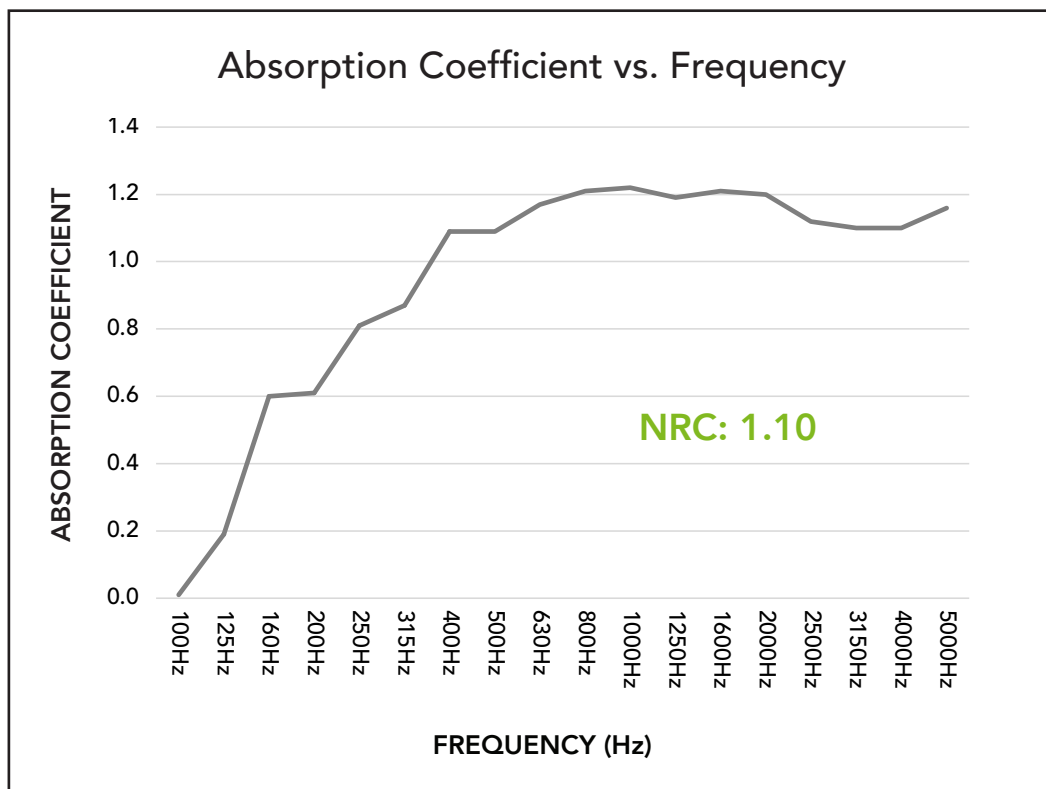


Acoustic Data

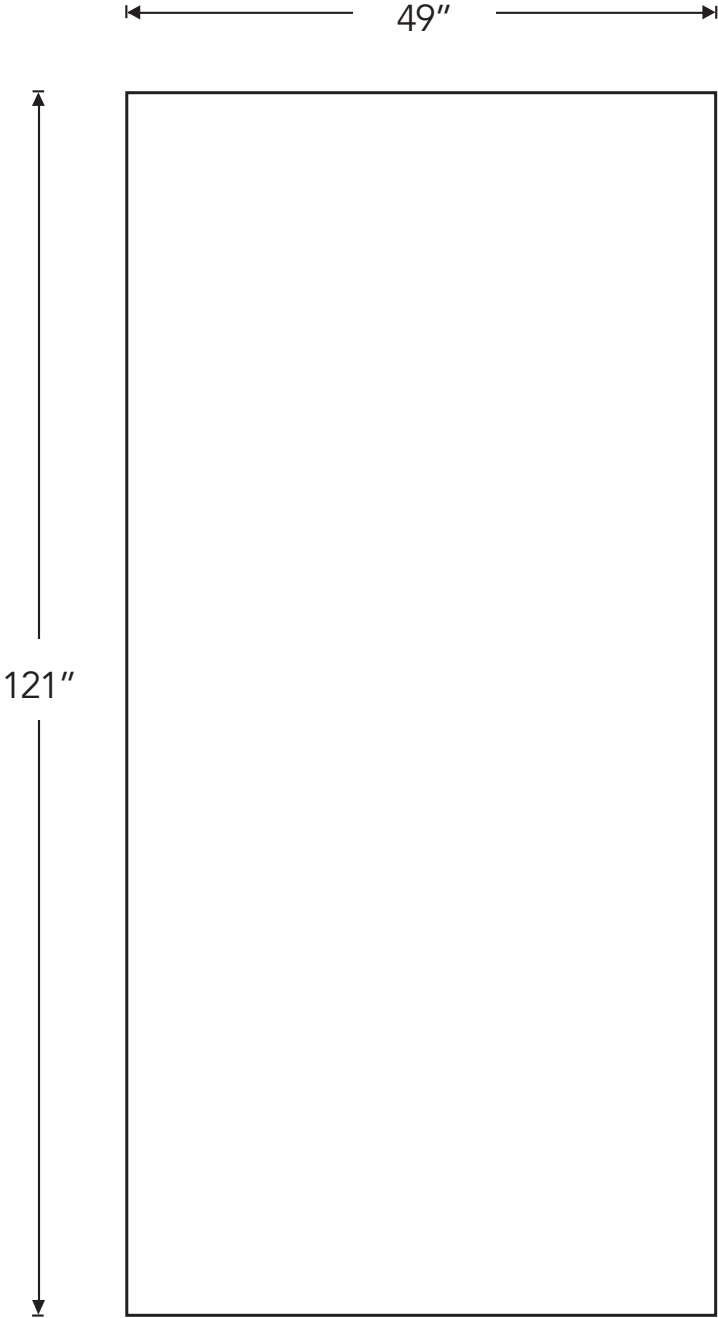
2" Utility PET Panel Sound Absorption

Frequency	125Hz	250Hz	500Hz	1000Hz	2000Hz	4000Hz	NRC	SAA
Abs. Coeff (No Air Gap)	0.19	0.81	1.09	1.22	1.20	1.10	1.10	1.06

Acoustic data is measured in Absorption Coefficient per square foot of material. For more information, see the full acoustic test.



Product Dimensions

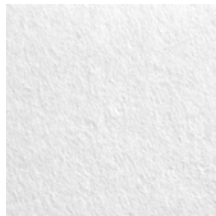


Front View



Side View

Available Colors



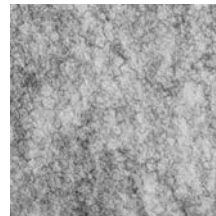
Pearl White 067



*Ivory 072



*Light Gray 076



Silver Gray 064



Light Khaki 065



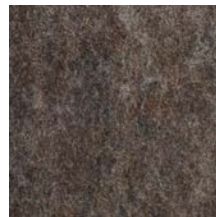
*Dark Brown 070



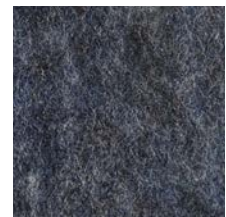
*Barley 071



*Dark Gray 069



*Walnut 073



*Ocean 074



*Denim 075



*Charcoal 068



Carbon Black 066

*These colors have a minimum order quantity of 100 panels.

Color variation between dye lots is a natural characteristic of recycled PET felt due to the manufacturing process. Slight differences between samples and finished product may occur.

Installation

2" Utility PET Panels are designed for straightforward wall and ceiling installation across a variety of interior applications. Their added depth enhances acoustic performance while maintaining a clean, refined appearance. For installation methods and mounting options, see the [2" Utility PET Panels Installation Guide](#).



Product shown: 2" Utility PET Panels in Barley

kirei

Learn more and request your free sample:

619.236.9924 | sales@kireiusa.com

kireiusa.com