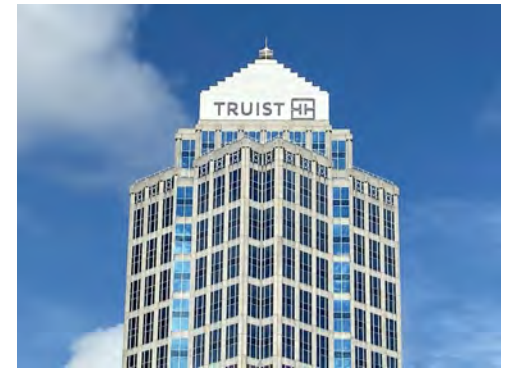
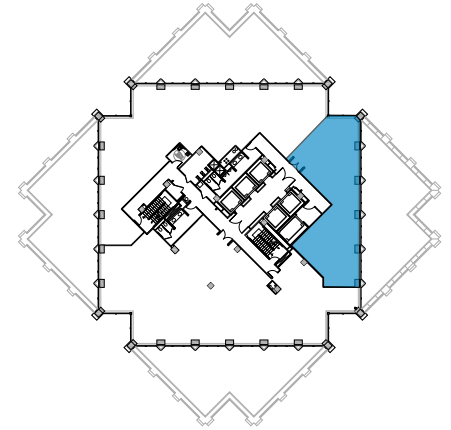
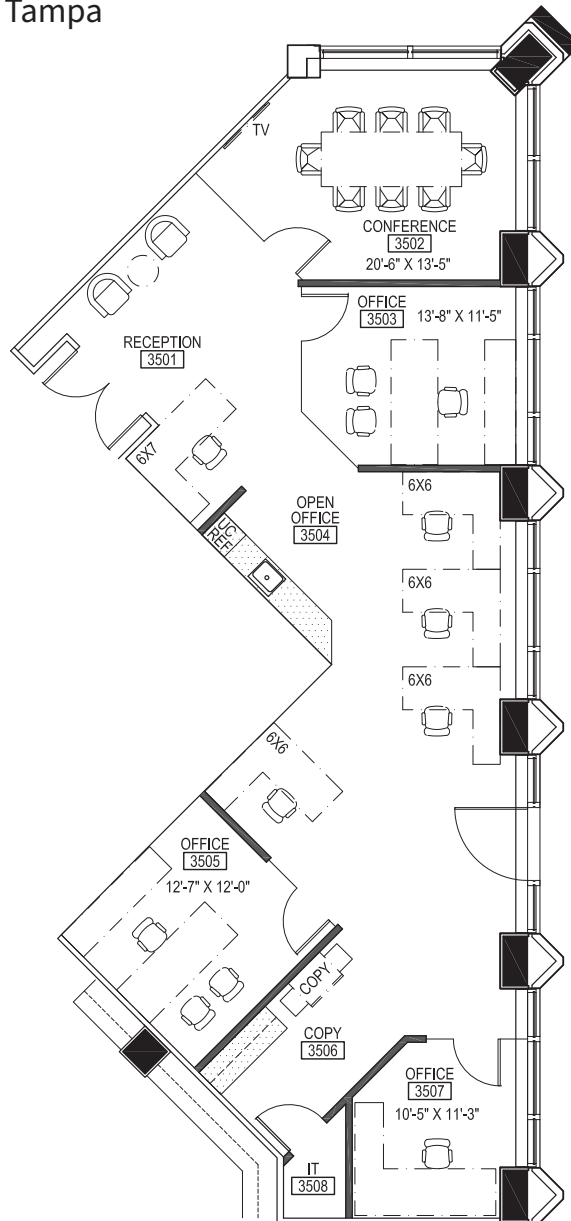


# TRUIST PLACE

401 East Jackson Street | Tampa

**Suite 3550** | 2,022 SF

*~spec suite~*



**Disclaimer:** The above floor plan is not to scale.  
The available space shown is believed to be correct but is subject to change.

LAUREN COUP | 813-673-6006  
SVP, TAMPA MARKET LEADER

BRAD HEETER | 813-673-6003  
SR. LEASING REPRESENTATIVE

