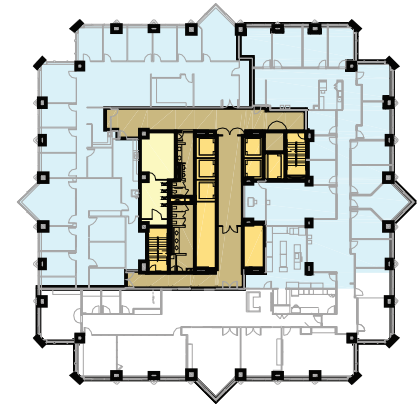
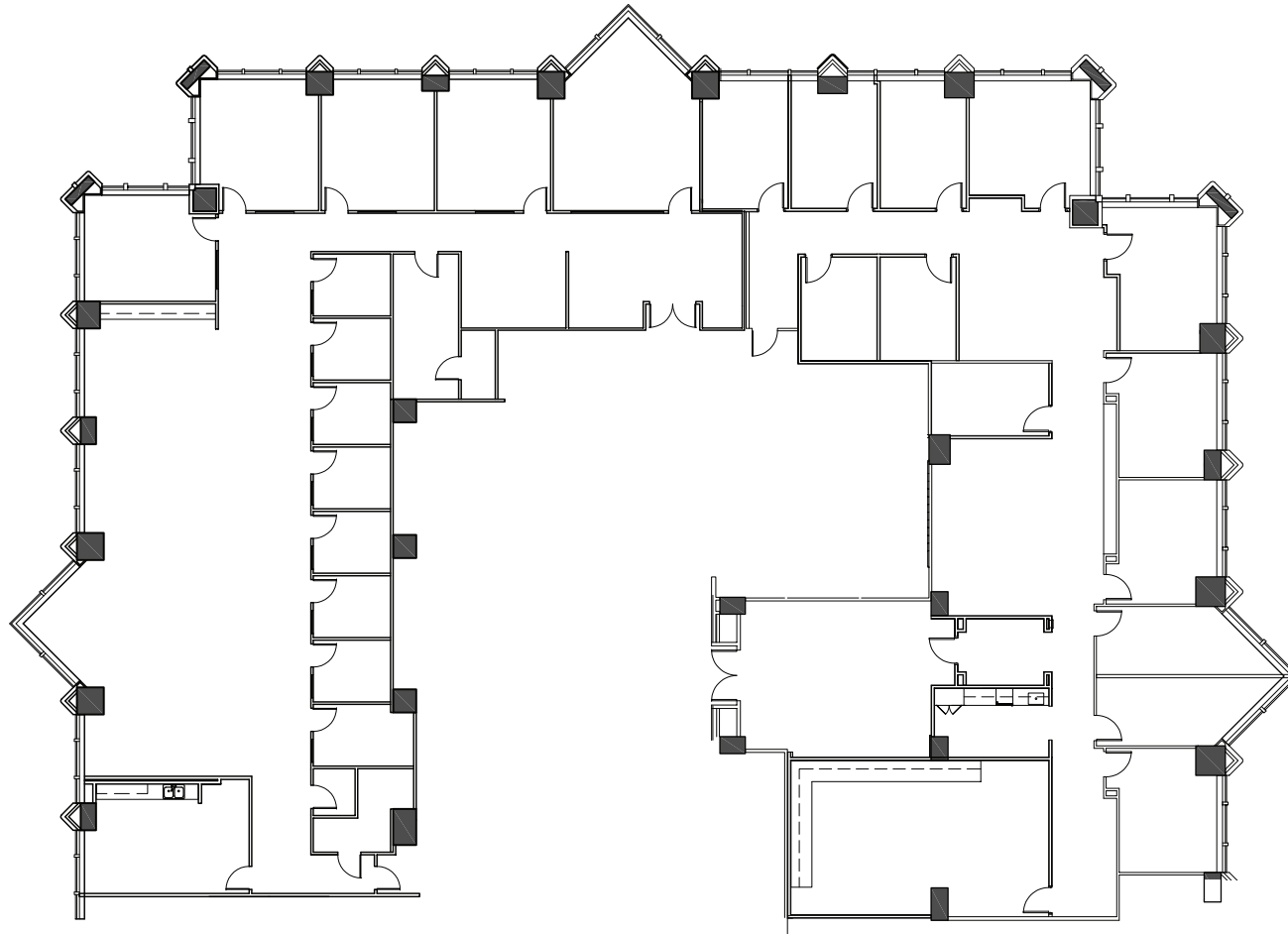


# TRUIST PLACE

401 East Jackson Street | Tampa

**Suite 2425/2450** | 13,022 SF



**Disclaimer:** The above floor plan is not to scale.  
The available space shown is believed to be correct but is subject to change.

LAUREN COUP | 813-673-6006  
SVP, TAMPA MARKET LEADER

BRAD HEETER | 813-673-6003  
SR. LEASING REPRESENTATIVE

 **Highwoods®**