



PPG PLACE

THE CROWN JEWEL OF
THE PITTSBURGH SKYLINE



PPG PLACE

It Begins Here.

PPG Place, often described as the “Crown Jewel” of the Pittsburgh skyline, stretches three city blocks at the forefront of downtown. The architecturally striking all-glass complex is comprised of six separate buildings totaling 1.5 million square feet of trophy Class A office space surrounding a vibrant, one-acre plaza that's open to the public year-around.

\$65M+ in building and capital improvements to the complex since 2011



Masterminds Welcomed.

PPG Place offers customizable and distinctive office space opportunities that appeal to tenants ranging from Fortune 500 companies to prominent law firms, design companies, tech users, philanthropic organizations and many more industries.

PPG Place accommodates firms of all sizes, from single person entrepreneur to larger firms.



SPARK

PPG Place's 5,000 SF conferencing center, Spark, features two separate conference rooms with an internal kitchen facility. Spark is equipped with the latest audio/visual technology, drop down projector screens and upgraded wifi capabilities.



Alta Via



City Works



We've got your taste buds covered.

With multiple on-site options from fine dining to fast casual, PPG Place's amenity-rich complex has your taste buds covered. Grab your coffee and bagel before work from Einstein Bros, enjoy lunch on the covered patio at City Works fronting vibrant Market Square or finish off the day at the newly renovated Ruth's Chris bar and restaurant over a martini

Ruth's Chris Steakhouse



So Fresh

Alta Via



alta via

SoFresh



FIVE GUYS
BURGERS and FRIES

C & C
NEWS & SNAX

Gather Greatly

THE WINTERGARDEN

Located on the ground floor of One PPG Place, the Wintergarden is a 15,000 SF event center that recently had a \$3M renovation. The Wintergarden also includes an on-site coffee and pastry bar that is open to the public.

THE PPG PLAZA

Located in the center of PPG Place, The Plaza features outdoor seating with a unique, interactive water display during spring, summer and fall months. During the winter, the center of the plaza transforms into an ice-skating rink with the world's most technologically-advanced holiday tree.





Sharpen
your focus.

velocity

COMING SPRING 2023

Exclusive to customers in PPG Place, Velocity will be a 5,000 SF fitness center outfitted with the latest state-of-the-art equipment along with private showers, changing areas and towel service.



5i FIVE IRON GOLF

Located in Two PPG Place, Five Iron Golf is an indoor golf simulation venue with flexible event spaces, full bar service, food menus, ping pong, shuffleboard, pool, widescreen TVs and more.

With best-in-class simulators, Trackman lesson studios, access to teaching professionals, top-of-the-line clubs and in-house club fitting services, you'll be playing like the pros in no time!



ONSITE RESTAURANTS

PPG PLACE

SoFresh
alta via

FIVE GUYS
BURGERS and FRIES

EINSTEIN BROS.
BAGELS

CITY WORKS
EVERY DAY

RUTH'S CHRIS
STEAK HOUSE

Chicken Craft

Easily Reached.

PPG Place's unmatched location brings its tenants and visitors the best of Downtown Pittsburgh, with endless dining, retail, entertainment and housing options.

- 40+ restaurants
- 12M annual visitors
- 4.9M sports venue attendance
- 8,207 existing hotel rooms



EXPLORE THE OPTIONS

Literally surrounded by restaurants, retail and hotels, scan the code to take a deeper dive into the area.

Car + Pedestrian Friendly



Shuttle Service



GATEWAY T STOP:

Provides light rail transit throughout the Central Business District, North Shore and South Pittsburgh destinations.



COURTESY SHUTTLE:

The PPG Place shuttle provides a means of transportation in and around the CBD. Pick-up and drop-off is located on Fourth Avenue by the plaza.



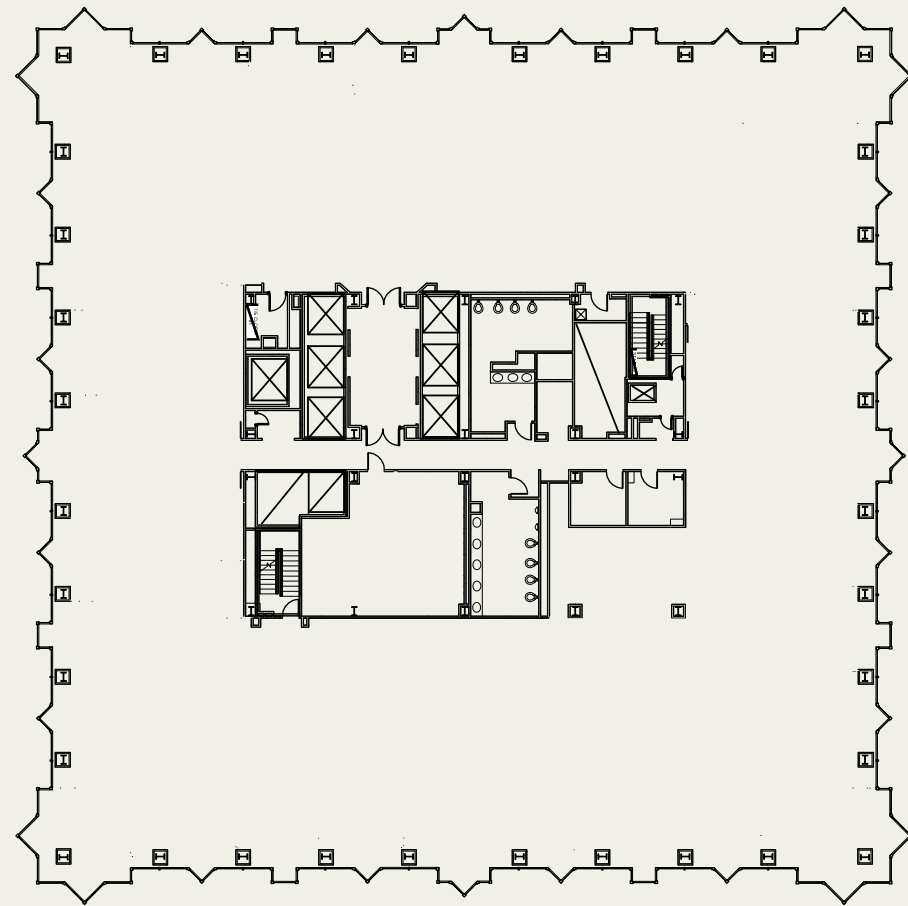
SECURED BIKE ROOM:

A secured bike room, available exclusively to customers, is located on the ground level of Two PPG Place, with maintenance tools provided for your convenience.

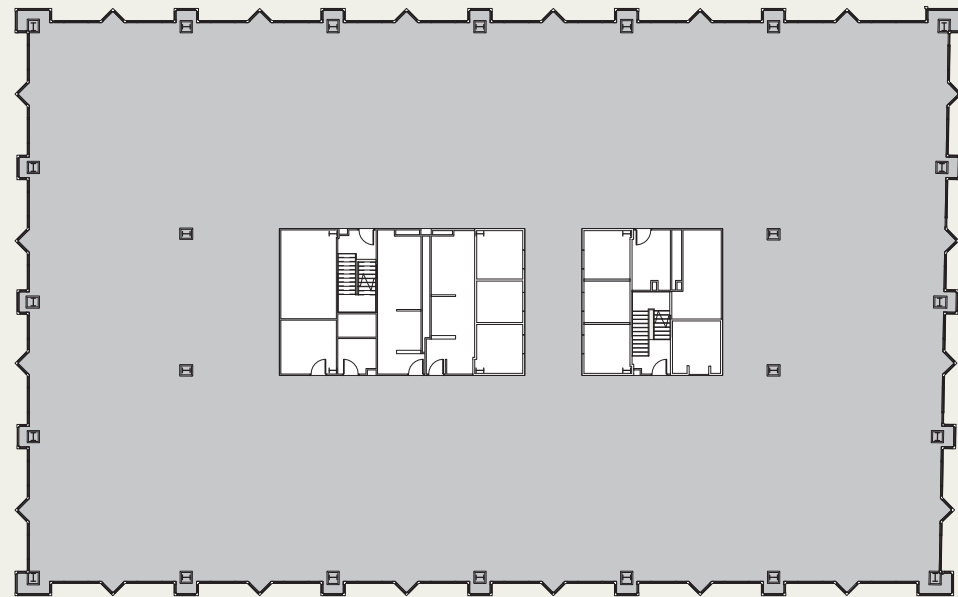


PARK SMART:

PPG Place features a 700-space, underground parking garage that underwent a \$1.4M garage renovation with new SmartPark technology.



ONE PPG PLACE | TYPICAL FLOOR PLATE | APPROX. 23,000 SF



SIX PPG PLACE | TYPICAL FLOOR PLATE | APPROX. 22,000 SF



**IN PITTSBURGH'S
MOST PRESTIGIOUS
BUSINESS ADDRESS**

Spark Your
Experience.

TRIPP MERCHANT

+1 412 208 8231

Tripp.Merchant@jll.com

JACKIE BEZEK

+1 412 208 1413

Jackie.Bezek@jll.com

Jones Lang LaSalle Americas, Inc.

+1 412 208 1400

260 Forbes Avenue, Suite 1200

Pittsburgh, PA, 15222



PPG PLACE

THE CROWN
JEWEL OF THE
PITTSBURGH
SKYLINE

Jones Lang LaSalle Brokerage, Inc.

Disclaimer: Although information has been obtained from sources deemed reliable, neither Owner nor JLL makes any guarantees, warranties or representations, express or implied, as to the completeness or accuracy as to the information contained herein. Any projections, opinions, assumptions or estimates used are for example only. There may be differences between projected and actual results, and those differences may be material. The Property may be withdrawn without notice. Neither Owner nor JLL accepts any liability for any loss or damage suffered by any party resulting from reliance on this information. If the recipient of this information has signed a confidentiality agreement regarding this matter, this information is subject to the terms of that agreement. ©2022 Jones Lang LaSalle IP, Inc. All rights reserved.