

VINYLAST™

High Performance Coatings for Ironwork

Benefits of Using VINYLAST™ Paints

- No primer necessary for interior or galvanized applications
- Fast drying and non-drip
- Excellent adhesion to hot dipped galvanizing
- Superior rust protection
- Suitable for aluminum and structural steel
- Chip resistant satin finish



All colors available in 11 oz. spray cans, 2.5 liter and 5 liter sizes. Smithy Black, Glossy Black and Dark Brown are available in 20 liters.

0001 Smithy Black
0001G Glossy Black

0002 Dark Brown

8022 Black Brown

0003 Graphite

6006 Grey Olive

7030 Stone Grey

Sparkle Silver

9006 Aluminum

3009 Red Oxide

1013 Pearl White

9010 Pure White

1021 Traffic Yellow

6005 Moss Green

6010 Grass Green

3000 Fire Red

FAQs About VINYLAST™ Paint



How is Vinylast™ better than regular paint?

Vinylast™ is high quality and does not require a primer, it does not drip and it dries fast unlike most other paints. It also offers better surface protection against rust. It has excellent adhesion even to hot dipped galvanized surfaces. And it gives a beautiful,

chip resistant satin sheen finish.

Can I spray this paint?

Yes, the paint can be used in any conventional sprayer. It can also be used with Electrostatic and airless sprayers.

The paint is very thick. What thinner should I use?

Although any industrial grade thinner will work, we recommend using Xylene. Up to 15% thinner may be added in a conventional sprayer.

What is the coverage of Vinylast paint?

When thinned, a 5L container covers approximately 250 sq. ft.

Do I need to apply a primer?

Vinylast does not need a primer in order to adhere to the steel. If a primer is preferred, we recommend Fast Primer Zinc Phosphate.

Can I use Vinylast™ over galvanizing?

Absolutely. Although a top quality paint for using directly onto mild steel, Vinylast™ was specially developed to adhere to galvanized steelwork. Vinylast™ bonds extremely well to galvanizing without the requirement of any kind of primer or surface abrasion.

What if I have a non-galvanized surface for an exterior job?

Although we always recommend galvanizing for exterior work, Vinylast™ still offers a superior finish and more durability than most paints. A primer is not required but if preferred, we recommend Fast Primer Zinc Phosphate. Apply 2 to 3 coats of Vinylast™ in order to achieve the required film thickness.

Can I use Vinylast™ over Aluminum?

Yes, Vinylast™ works very well over aluminum. However, you may need an etch primer or a T-wash primer, or you may need to abrade especially for very smooth surfaces.

What kind of maintenance is required?

Vinylast™ is virtually a maintenance free finish which will last for many years, especially when applied over a galvanized surface. You can repaint over Vinylast™ painted work after cleaning it.

How does Vinylast™ compare to powder coating?

Vinylast™ looks better on good quality decorative ironwork than most powder finishes. Powder coating is also difficult to repair or touch up. It does not adhere well to galvanized products without surface preparation.

For MSDS Sheets and detailed product information see:

www.archirondesign.com/vinylast

VOC Content: 585 grams per liter. Please check local VOC requirements before using this product.

PLEASE ASK FOR DATA SHEETS AND READ THESE BEFORE USING OUR PAINTS. NOTE: Coverage figures provided are only approximate and we cannot be held responsible for any variation. Coverage figures depend on equipment, the operator, thickness applied and the design/type of the work being painted.



staygold

A long lasting gold paint used for highlighting railheads, rosettes and other features. For steel and aluminum. Thin with Xylene if necessary. **113/30 – 1 liter**

FAST PRIMER ZINC PHOSPHATE

A high quality, general purpose, conventional anti-corrosive primer containing zinc phosphate to help prevent rust. Recommended application by spraying but small areas can be brushed on. Coverage (approx.) 15 sq. meters per liter.

Item Number

Grey 2.5 liters	113/16
Grey 5 liters	113/17
Grey 20 liters	113/17-20L
Red Oxide 2.5 liters	113/19
Red Oxide 5 liters	113/20
Red Oxide 20 liters	113/20-20L

INDUSTRIAL THINNERS (XYLENE)

An all purpose thinner for use with Vinylast™, Fast Primer Zinc Phosphate, and Staygold.

	Item Number
1 liter	113/23
5 liters	113/24
25 liters	113/25

Patinas

Create Antique and Highlighted Finishes

Supplied in 375 ml tins.



112/6 Gold



112/7 Copper



112/8 Silver



112/11 Pale Blue



112/10 Pale Green



112/9 Green



Gold Patina on a White 9010 base coat always brings life to a fine piece of ironwork.



Our all time favorite is Smithy Black 0001, with Copper Patina.



This classic finish is Graphite 0003 Vinylast with Silver Patina highlights.

HELPING TO CREATE A HEALTHY ENVIRONMENT

AQUALAST™

Aqualast™, our greener paint option for ironwork, is water based, environmentally friendly and works as well as our original Vinylast paint.

- ☞ Minimal solvent content (Less than 2%)
- ☞ Thin and clean with water, not solvents
- ☞ Operator friendly
- ☞ Apply directly to galvanized steel
- ☞ Long lasting
- ☞ Low maintenance
- ☞ Professional quality finish

Most exterior paints have a high solvent content of 50%+, which evaporates into the atmosphere. AQUALAST, however, has a minimal solvent content of less than 2%, offering huge benefits to the environment.

Water based coatings require well controlled environmental conditions to ensure adequate drying. We recommend that AQUALAST be applied in a suitable paint shop with good air movement, heat and the availability to maintain a temperature of above 55°F and relative humidity levels of below 70%, especially during the winter months.



SUPPLIED IN:
1 LITER
2.5 LITER
5 LITER

**AQUA0001
Smithy Black**

**AQUA0002
Dark Brown**

**AQUA0003
Graphite**

**AQUA9010
Pure White**

COMPARISON

	Aqualast	Vinylast
VOC	Low	High
Clean up	Water	Xylene
Thinner	Water	Xylene
Goes over galvanizing	✓	✓
Fast Drying	Depends on Humidity	✓
No Primer Needed	✓	✓
Interior or Exterior Use	✓	✓

FAQs About AQUALAST™ Paint

How is Aqualast™ better than regular paint?

Aqualast™ is high quality and does not require a primer, it does not drip unlike most other paints. It also offers better surface protection against rust. It has excellent adhesion even to hot dipped galvanized surfaces. And it gives a beautiful, chip resistant satin sheen finish.

Can I spray this paint?

Yes, the paint can be used in any conventional sprayer. It can also be used with Electrostatic and airless sprayers. To thin you may use water.

Can I use Aqualast™ over galvanizing?

Absolutely. Although a top quality paint for using directly onto mild steel, Aqualast™ was specially developed to adhere to galvanized steelwork. Aqualast™ bonds extremely well to galvanizing without any kind of primer or surface abrasion required.

What if I have a non-galvanized surface for an exterior job?

Although we always recommend galvanizing for exterior work, Aqualast™ still offers a superior finish and more durability than most paints. A primer is not required but if preferred, we recommend our Fast Primer Zinc Phosphate. Apply 2 to 3 coats of Aqualast™ in order to achieve the required film thickness.

For an MSDS Sheet and detailed product information see:
www.archirondesign.com
VOC Content: 0 grams per liter.

Can I use Aqualast™ over Aluminum?

Yes, Aqualast™ works very well over aluminum also. However, we recommend using an etch primer or a T-wash primer, or abrading the surface, especially for very smooth surfaces.

What kind of maintenance is required?

Aqualast™ is virtually a maintenance free finish which lasts for many years, especially when applied over a galvanized surface. You can repaint over Aqualast™ painted work after cleaning it.

How does Aqualast™ compare to powder coating?

Aqualast™ looks better on good quality decorative ironwork than most powder finishes. Powder coating is also difficult to repair or touch up. It does not adhere well to galvanized products without surface preparation.

Benefits of Using AQUALAST Paints

- No primer necessary
- Excellent adhesion to hot dipped galvanizing
- Superior rust protection
- Suitable for aluminum and structural steel
- Chip resistant satin finish

RUSTRESOLVE - RUST CONVERTER

What does **RUSTRESOLVE** do?
The Eco-Friendly Way to Fight Rust

RUSTRESOLVE offers an easy and effective way to deal with existing rust without the need for sandblasting or hours of wire brushing. Simply wire brush off any flaking rust and apply **RUSTRESOLVE**. Within minutes, the rust will disappear and the surface will turn a bluish black color that you can paint over.

RUSTRESOLVE

- Is a complex mixture of vinyl acrylic copolymer and tannic acid for the treatment of corroded steel and iron surfaces.
- Is a strong, yet eco-friendly, zero VOC product that neutralizes the corrosion process. It then further protects the surface by forming a film with low permeability to water vapor and oxygen.
- Is self priming but for long term protection it is advisable to overcoat with a suitable water or solvent based midcoat or topcoat.
- One liter treats 8-9 square meters.
- Can be used in the following areas: Manufacturing, Agriculture, Automotive, Chemical, Marine, Heavy Engineering, Building and Construction, DIY, etc.



112/15 - 250ml

112/13 - 1 Liter

112/14 - 5 Liters

For more information visit www.archirondesign.com/rustresolve

Application

Surfaces should be wire brushed to remove loose rust and washed with water to remove soluble salts as they inhibit the conversion process. Surfaces should also be free of oil and grease.

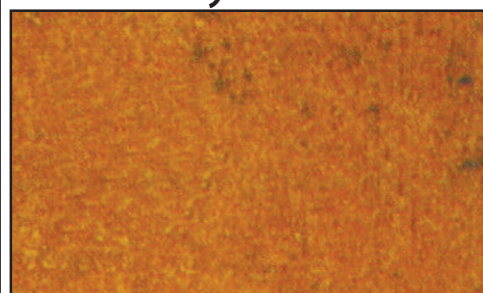
RUSTRESOLVE has been designed for application by spray and brush. By airless spray a dry film thickness of up to 60 microns can be achieved without sagging. The addition of further water may be necessary for air assisted spraying. By brush application, a dry film thickness of 40 microns per coat is considered optimum.

RUSTRESOLVE can be applied over damp surfaces and dries quickly under suitable temperature and humidity conditions. Immediately after use, equipment should be washed in water to remove all traces of **RUSTRESOLVE**.

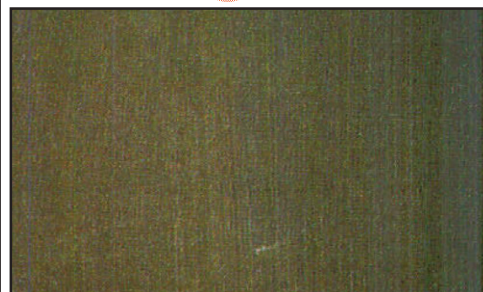
Drying Conditions

Temperature, humidity, air movement and film thickness all affect drying time. Under ideal conditions, a 100 micron wet film of **RUSTRESOLVE** will be dry to the touch in approximately 10 minutes at 68°F, whereas at 50°F and with little air movement, this time can be as long as 2 hours. **RUSTRESOLVE** should not be applied at temperatures below 50°F, or when there is risk of condensation or rain during this drying period.

Rusty Surface



After **RUSTRESOLVE** Application



Visit www.archirondesign.com/resource-center to download the MSDS sheet from our technical library.